

DISTRICT I
P.O. Box 1000, Hobbs, NM 88241-1000

DISTRICT II
P.O. Drawer 88, Artesia, NM 88211-0718

DISTRICT III
1000 Elia Branch Rd., Aztec, NM 87410

DISTRICT IV
P.O. Box 8086, Santa Fe, N.M. 87504-8086

State of New Mexico
Energy, Minerals and Natural Resources Department

Form C-102
Revised February 10, 1994
Submit to Appropriate District Office
State Lease - 4 Copies
Fee Lease - 3 Copies

OIL CONSERVATION DIVISION

P.O. Box 2088
Santa Fe, New Mexico 87504-2088

☐ AMENDED REPORT

WELL LOCATION AND ACREAGE DEDICATION PLAT

API Number	Pool Code 96477	Pool Name FORTY NINER RIDGE; DELAWARE, SOUTHWEST
Property Code 16594	Property Name G.R. 30 STATE	Well Number 3
OGED No. 014007	Operator Name MARALO, LLC	Elevation 3117

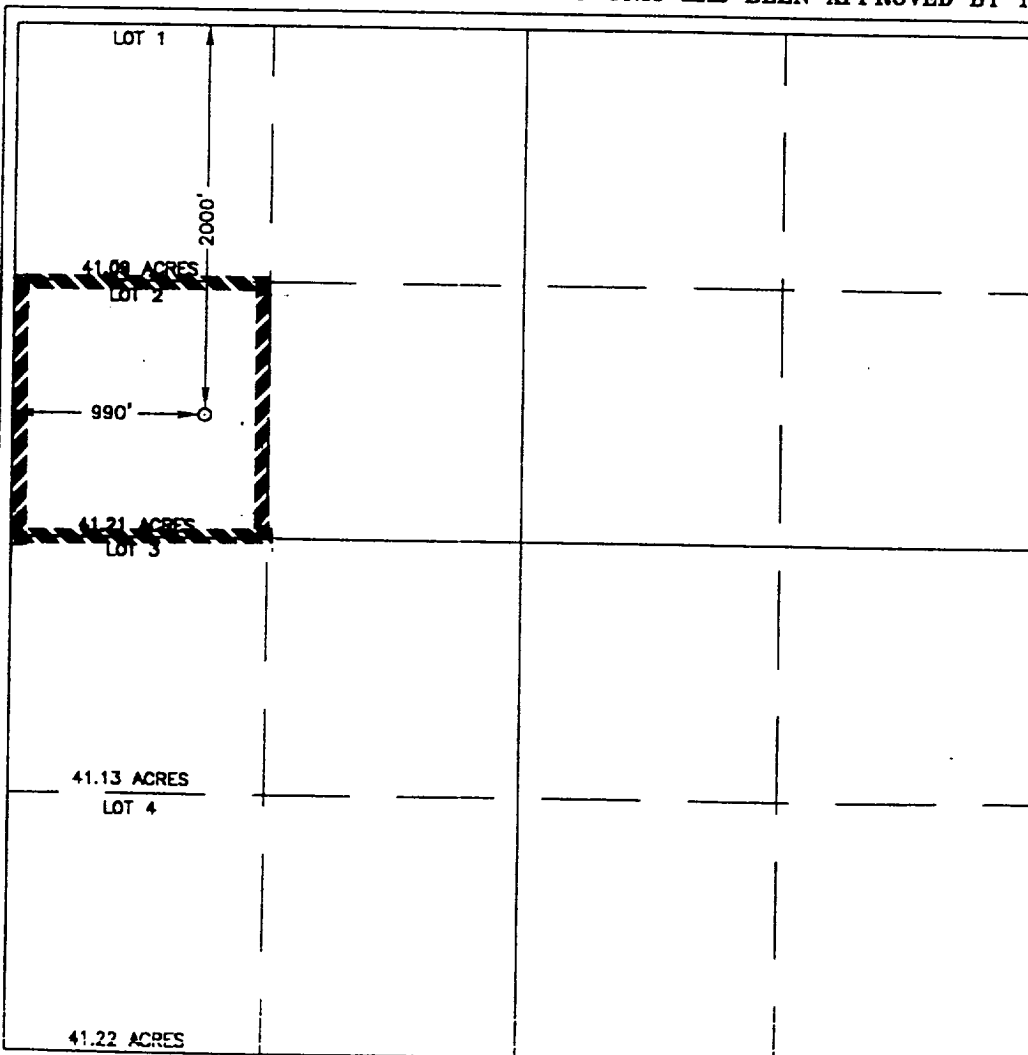
Surface Location

UL or lot No. LOT 2	Section 30	Township 23 S	Range 30 E	Lot Idn	Feet from the 2000	North/South line NORTH	Feet from the 990	East/West line WEST	County EDDY
------------------------	---------------	------------------	---------------	---------	-----------------------	---------------------------	----------------------	------------------------	----------------

Bottom Hole Location If Different From Surface

UL or lot No.	Section	Township	Range	Lot Idn	Feet from the	North/South line	Feet from the	East/West line	County
Dedicated Acres 40	Joint or Infill N	Consolidation Code	Order No.						

NO ALLOWABLE WILL BE ASSIGNED TO THIS COMPLETION UNTIL ALL INTERESTS HAVE BEEN CONSOLIDATED
OR A NON-STANDARD UNIT HAS BEEN APPROVED BY THE DIVISION



OPERATOR CERTIFICATION

I hereby certify that the information
contained herein is true and complete to the
best of my knowledge and belief.

Dorothea Logan
Signature

DOROTHEA LOGAN

Printed Name

REGULATORY ANALYST

Title

APRIL 23, 2000

Date

SURVEYOR CERTIFICATION

I hereby certify that the well location shown
on this plat was plotted from field notes of
actual surveys made by me or under my
supervision and that the same is true and
correct to the best of my belief.

MARCH 30, 2000

Date Surveyed DC

Signature & Seal of
Professional Surveyor

Ronald J. Kidson
3/31/00
00-11-0400

Certificate No. RONALD J. KIDSON 3239
GARY KIDSON 12641
MACON McDONALD 12186