

DISTRICT I
P. O. Box 1980, Hobbs, NM 88240

DISTRICT II
P. O. Drawer DD, Artesia, NM 88210

DISTRICT III
1000 Rio Brazos Rd., Aztec, NM 87410

DISTRICT IV
P. O. Box 2088, Santa Fe, NM 87504-2088

State of New Mexico
Energy, Minerals and Natural Resources Department

Form C-102
Revised February 10, 1994

OIL CONSERVATION DIVISION
PO Box 2088
Santa Fe, NM 87504-2088

Instructions on back

Submit to Appropriate District Office

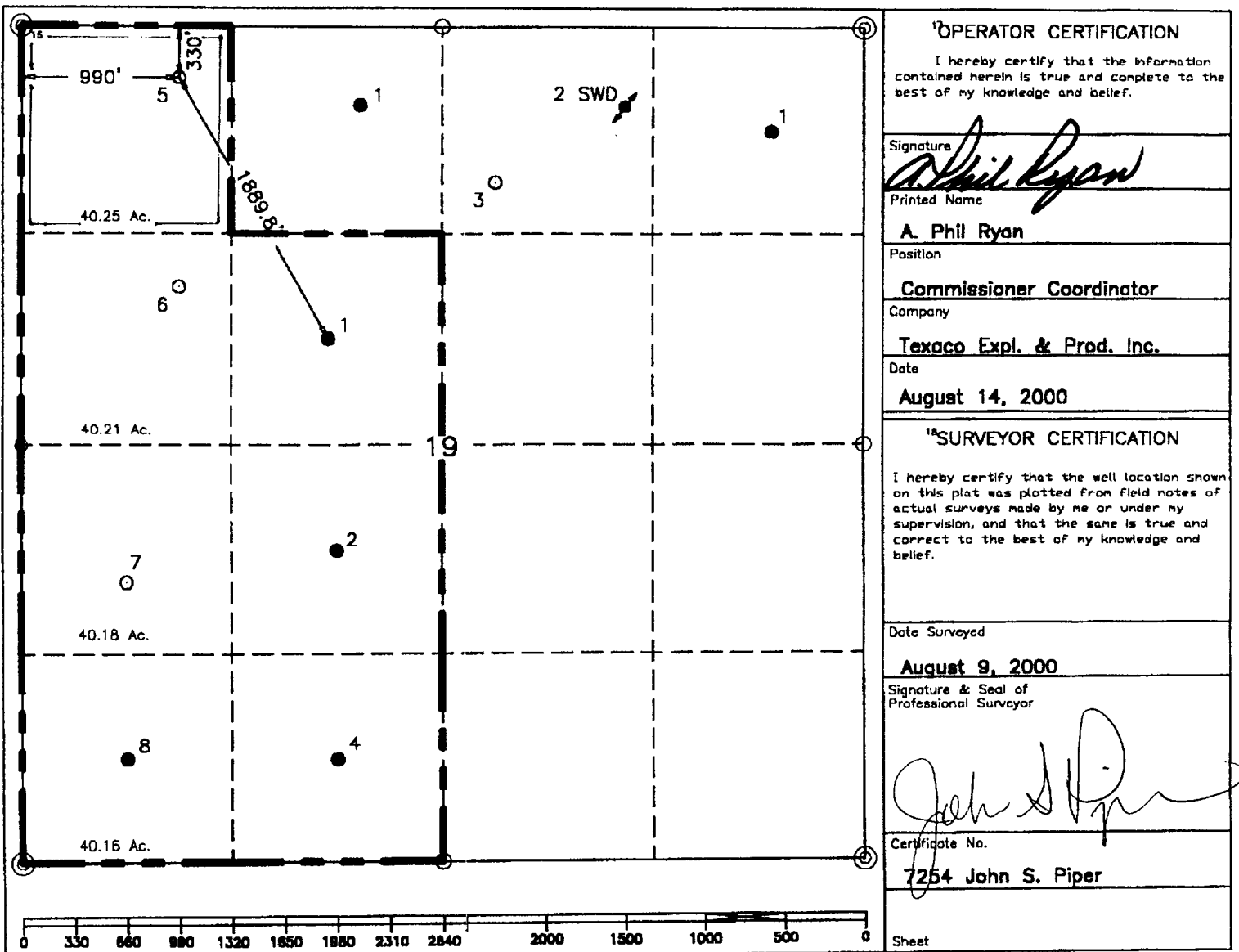
State Lease-4 copies
Fee Lease-3 copies

WELL LOCATION AND ACREAGE DEDICATION PLAT

AMENDED REPORT

¹ API Number		² Pool Code		³ Pool Name Brushy Canyon, Delaware; Bone Springs					
⁴ Property Code		⁵ Property Name Remuda Basin State						⁶ Well Number 5	
⁷ GRID No.		⁸ Operator Name TEXACO EXPLORATION & PRODUCTION, INC.						⁹ Elevation 3025'	
¹⁰ Surface Location									
UL or lot no. D	Section 19	Township 23-S	Range 30-E	Lot Idn	Feet from the 330'	North/South line North	Feet from the 990'	East/West line West	⁷ County Eddy
¹¹ Bottom Hole Location If Different From Surface									
UL or lot no.	Section	Township	Range	Lot Idn	Feet from the	North/South line	Feet from the	East/West line	⁷ County
¹² Dedicated Acres 40.25		¹³ Joint or Infill		¹⁴ Consolidation Code		¹⁵ Order No.			

NO ALLOWABLE WILL BE ASSIGNED TO THIS COMPLETION UNTIL ALL INTERESTS HAVE BEEN CONSOLIDATED OR A NON-STANDARD UNIT HAS BEEN APPROVED BY THE DIVISION.



OPERATOR CERTIFICATION
I hereby certify that the information contained herein is true and complete to the best of my knowledge and belief.

Signature: *A. Phil Ryan*
Printed Name: A. Phil Ryan
Position: Commissioner Coordinator
Company: Texaco Expl. & Prod. Inc.
Date: August 14, 2000

SURVEYOR CERTIFICATION
I hereby certify that the well location shown on this plat was plotted from field notes of actual surveys made by me or under my supervision, and that the same is true and correct to the best of my knowledge and belief.

Date Surveyed: August 9, 2000
Signature & Seal of Professional Surveyor: *John S. Piper*
Certificate No.: 7254 John S. Piper

Sheet

○ = Staked Location ● = Producing Well ↗ = Injection Well ⊙ = Water Supply Well ⊕ = Plugged & Abandon Well
⊙ = Found Section Corner, 2 or 3" Iron Pipe & GLO B.C. ○ = Found /4 Section Corner, 1" Iron Pipe & GLO B.C.

ADDITIONAL INFORMATION ON THE LOCATION

State Plane Coordinates		Northing 471897.76 (1983=471957.31)		Easting 625877.56 (1983=667060.74)	
Latitude 32°17'48.142" (1983=32°17'48.582")		Longitude 103°55'33.434" (1983=103°55'35.198")			
Zone	North American Datum	Combined Grid Factor	Coordinate File		
East	1927	.9997765	Remuda27.cr5		
Drawing File	Field Book				
RBState5.DWG	Eddy Co. FB. 7, Pg. 64				