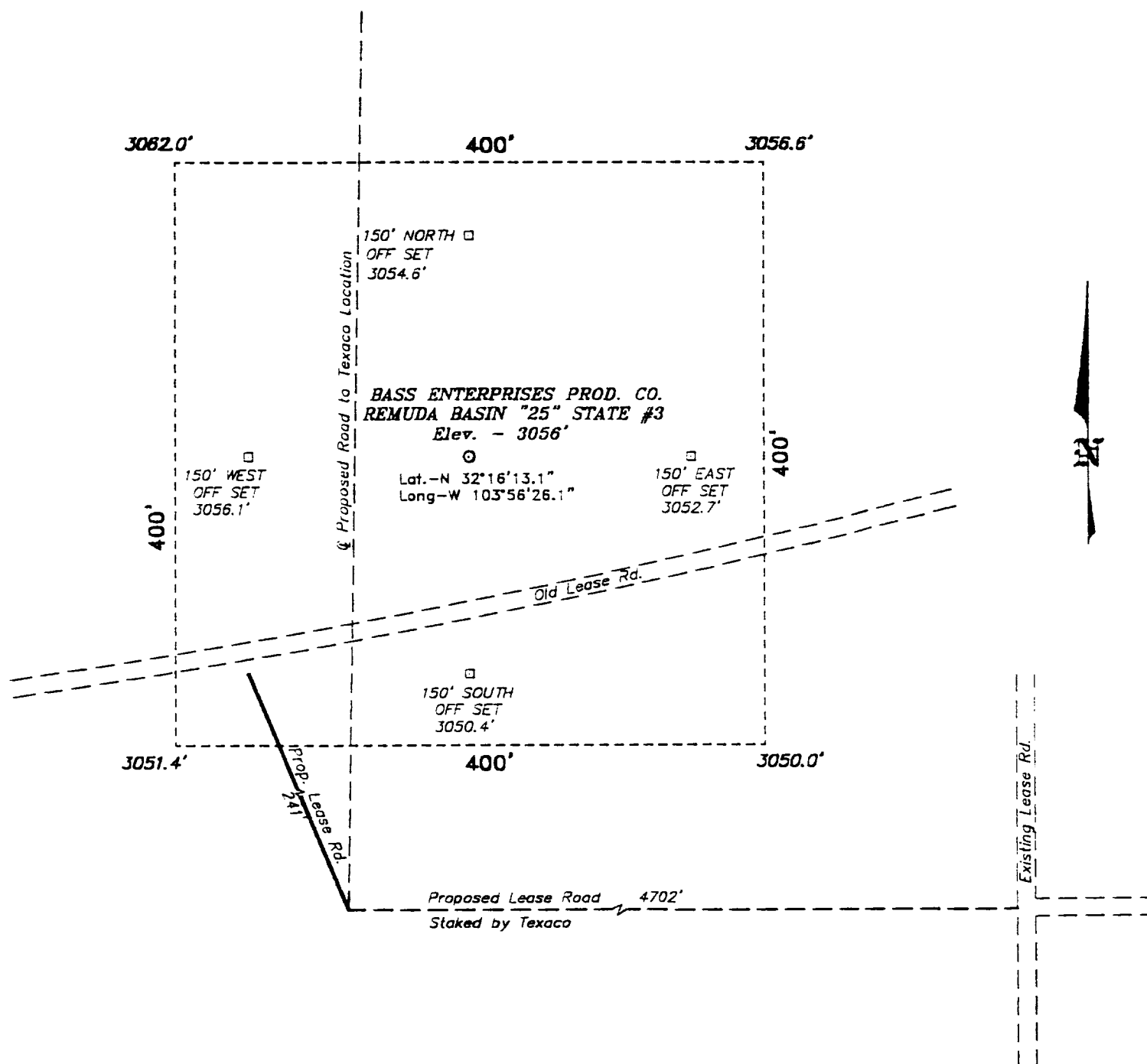


SECTION 25, TOWNSHIP 23 SOUTH, RANGE
EDDY COUNTY,

EAST, N.M.P.M.,
NEW MEXICO.



DIRECTIONS TO LOCATION:

FROM THE JUNCTION OF STATE HWY 31 AND STATE HWY 128, GO EAST ON HWY 128 FOR APPROX. 4.25 MILES TO CO. RD. 793; THENCE SOUTH ON 793 FOR APPROX. 3.25 MILES; THENCE CONTINUE SOUTH ON LEASE ROAD APPROX. 1800 FEET; THENCE EAST ON LEASE ROAD APPROX. 1700 FEET; THENCE SOUTH APPROX. 0.75 MILE TO A PROPOSED LEASE STAKED FOR TEXACO; THENCE WEST ALONG STAKED ROAD 4702 FEET TO PROPOSED LEASE ROAD TO BASS LOCATION WHICH LIES 241 FEET SOUTH OF PROPOSED WELL PAD.



SCALE: 1" = 100'

BASS ENTERPRISES PRODUCTION CO.

REF: Remuda Basin "25" State No. 3 / Well Pad Topo

THE REMUDA BASIN "25" STATE No. 3 LOCATED 660'
FROM THE SOUTH LINE AND 1980' FROM THE WEST LINE OF
SECTION 25, TOWNSHIP 23 SOUTH, RANGE 29 EAST.

N.M.P.M., EDDY COUNTY, NEW MEXICO.

BASIN SURVEYS P.O. BOX 1786 - HOBBS, NEW MEXICO

W.O. Number: 1009

Drawn By: K. GOAD

Date: 01-12-2001

Disk: KJG CD#3 - 1009A.DWG

Survey Date: 01-10-2001

Sheet 1 of 1 Sheets