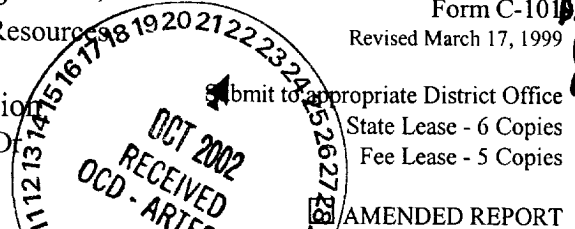


District I  
1625 N. French Dr., Hobbs, NM 88240  
District II  
1301 W. Grand Avenue, Artesia, NM 88210  
District III  
1000 Rio Brazos Road, Aztec, NM 87410  
District IV  
1220 S. St. Francis Dr., Santa Fe, NM 87505

RESUBMITTAL  
State of New Mexico  
Energy Minerals and Natural Resources

Form C-101  
Revised March 17, 1999

Oil Conservation Division  
1220 South St. Francis Dr.  
Santa Fe, NM 87505



APPLICATION FOR PERMIT TO DRILL, RE-ENTER, DEEPEN, PLUGBACK, OR ADD A ZONE

<sup>1</sup> Operator Name and Address Pogo Producing Company P. O. Box 10340 Midland, TX 79702-7340		<sup>2</sup> OCM Number 01785	<sup>3</sup> API Number 30-015-31709
<sup>3</sup> Property Code 23616	<sup>5</sup> Property Name Harroun "10"		<sup>6</sup> Well No. 2

<sup>7</sup> Surface Location

UL or lot no.	Section	Township	Range	Lot Idn	Feet from the	North/South line	Feet from the	East/West line	County
M	10	24S	29E		660'	South	990'	West	Eddy

<sup>8</sup> Proposed Bottom Hole Location If Different From Surface

UL or lot no.	Section	Township	Range	Lot Idn	Feet from the	North/South line	Feet from the	East/West line	County
<sup>9</sup> Proposed Pool 1 Cedar Canyon Delaware (11540)					<sup>10</sup> Proposed Pool 2				

<sup>11</sup> Work Type Code N	<sup>12</sup> Well Type Code O	<sup>13</sup> Cable/Rotary R	<sup>14</sup> Lease Type Code P	<sup>15</sup> Ground Level Elevation 2947'
<sup>16</sup> Multiple No	<sup>17</sup> Proposed Depth 8200'	<sup>18</sup> Formation Delaware	<sup>19</sup> Contractor Unknown	<sup>20</sup> Spud Date When approved

<sup>21</sup> Proposed Casing and Cement Program

Hole Size	Casing Size	Casing weight/foot	Setting Depth	Sacks of Cement	Estimated TOC
25"	20"	NA	40'	Redi-mix	Surface
17-1/2"	13-3/8"	48	550'	650 sks	Surface
11"	8-5/8"	32	2900'	1000 sks	Surface
7-7/8"	5-1/2"	17 & 15.5	8200'	1000 sks	1900' FS

<sup>22</sup> Describe the proposed program. If this application is to DEEPEN or PLUG BACK, give the data on the present productive zone and proposed new productive zone.  
Describe the blowout prevention program, if any. Use additional sheets if necessary.

1. Drill 25" hole to 40'. Set 40' of 20" conductor pipe & cmt to surface w/ Redi-mix.
2. Drill 17-1/2" hole to 550'. Run & set 550' 13-3/8" 48# csg. Cmt w/ 650 sks CI "C" cmt + 1/4# Flocele/sk + 2% CaCl, circulate cmt to surface.
3. Drill 11" hole to 2900'. Run & set 2900' 8-5/8" 32# csg. Cmt w/ 1000 sks CI "C" cmt + 2% CaCl + 1/4# Flocele/sk, circulate cmt to surface.
4. Drill 7-7/8" hole to 8200'. Run & set 8200' 5-1/2" 15.5# & 17# csg. Cmt in two stages w/ DV tool @ 5550±. Cmt w/ 1000 sks CI "H" cmt. Est TOC 1900'.

<sup>23</sup> I hereby certify that the information given above is true and complete to the best of my knowledge and belief. Signature: <i>Cathy Tomberlin</i> Printed name: Cathy Tomberlin Title: Sr. Operation Tech Date: 10/21/02		OIL CONSERVATION DIVISION Approved by: <b>ORIGINAL SIGNED BY TIM W. GUM</b> <b>DISTRICT II SUPERVISOR</b> Title: Approval Date: <b>OCT 22 2002</b> Expiration Date: <b>OCT 22 2003</b> Conditions of Approval: Attached <input type="checkbox"/>	
Phone: 915-685-8100			

## DISTRICT I

P.O. Box 1980, Hobbs, NM 88241-1980

## State of New Mexico

Energy, Minerals and Natural Resources Department

## DISTRICT II

P.O. Drawer DD, Artesia, NM 88211-0719

## DISTRICT III

1000 Rio Brazos Rd., Artesia, NM 87410

## DISTRICT IV

P.O. BOX 2088, SANTA FE, N.M. 87504-2088

## OIL CONSERVATION DIVISION

P.O. Box 2088

Santa Fe, New Mexico 87504-2088

Form C-102

Revised February 10, 1994

Submit to Appropriate District Office

State Lease - 4 Copies

Fee Lease - 3 Copies

## WELL LOCATION AND ACREAGE DEDICATION PLAT

☐ AMENDED REPORT

API Number		Pool Code	Pool Name
		11540	CEDAR CANYON -DELAWARE
Property Code	Property Name		Well Number
23616	HARROUN "10"		2
OGRID No.	Operator Name		Elevation
17891	POGO PRODUCING COMPANY		2947'

## Surface Location

UL or lot No.	Section	Township	Range	Lot Idn	Feet from the	North/South line	Feet from the	East/West line	County
M	10	24-S	29-E		660	SOUTH	990	WEST	EDDY

## Bottom Hole Location If Different From Surface

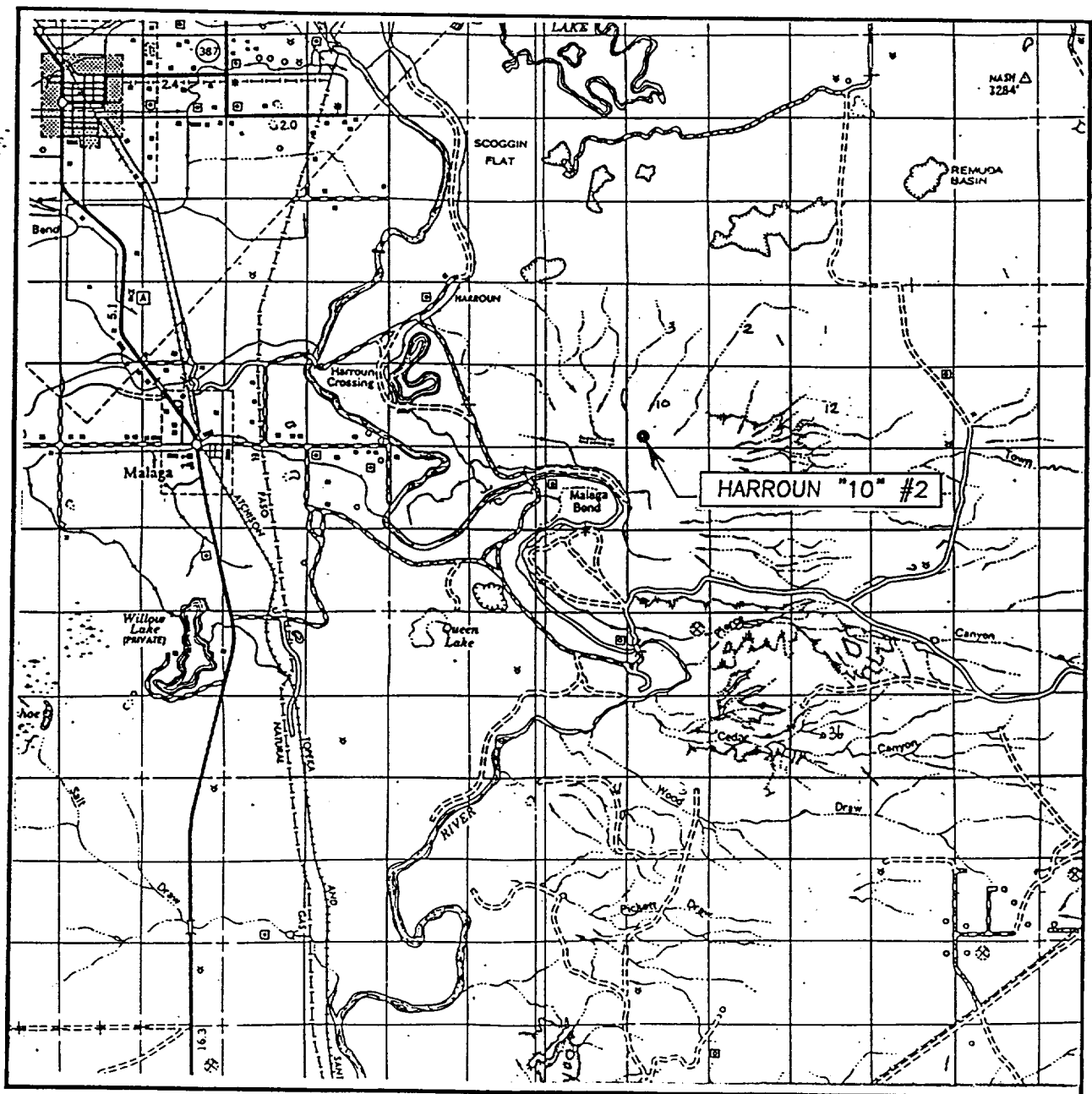
UL or lot No.	Section	Township	Range	Lot Idn	Feet from the	North/South line	Feet from the	East/West line	County

Dedicated Acres	Joint or Infill	Consolidation Code	Order No.
40			

NO ALLOWABLE WILL BE ASSIGNED TO THIS COMPLETION UNTIL ALL INTERESTS HAVE BEEN CONSOLIDATED  
OR A NON-STANDARD UNIT HAS BEEN APPROVED BY THE DIVISION

					<b>OPERATOR CERTIFICATION</b> I hereby certify the the information contained herein is true and complete to the best of my knowledge and belief.  Signature Joe T. Janica Printed Name Agent Title 04/16/01 Date			
					<b>SURVEYOR CERTIFICATION</b> I hereby certify that the well location shown on this plat was plotted from field notes of actual surveys made by me or under my supervision, and that the same is true and correct to the best of my belief. APRIL 10, 2001 Date Surveyed Signature & Seal of Professional Surveyor  81-11-0427 Certificate No. RONALD E. EDSON 3239 GARY EDSON 12641			

# VICINITY MAP



SCALE: 1" = 2 MILES

SEC. 10 TWP. 24-S RGE. 29-E

SURVEY N.M.P.M.

COUNTY EDDY

DESCRIPTION 660' FSL & 990' FWL

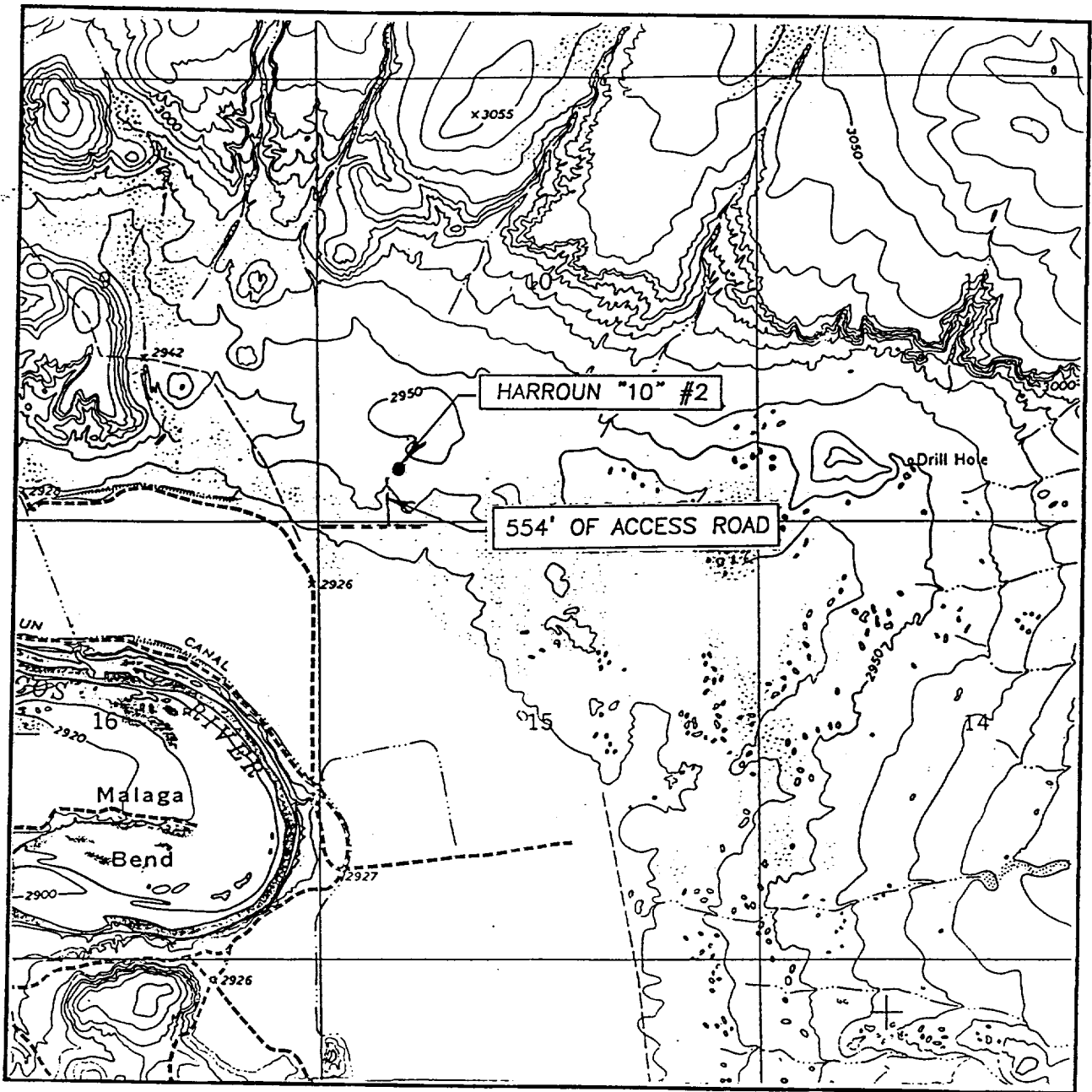
ELEVATION 2947'

OPERATOR POGO PRODUCING COMPANY

LEASE HARROUN "10"

**JOHN WEST SURVEYING**  
**HOBBS, NEW MEXICO**  
**(505) 393-3117**

# LOCATION VERIFICATION MAP



SCALE: 1" = 2000'

CONTOUR INTERVAL: 10'

PIERCE CAYON, N.M.

SEC. 10 TWP. 24-S RGE. 29-E

SURVEY N.M.P.M.

COUNTY EDDY

DESCRIPTION 660' FSL & 990' FWL

ELEVATION 2947'

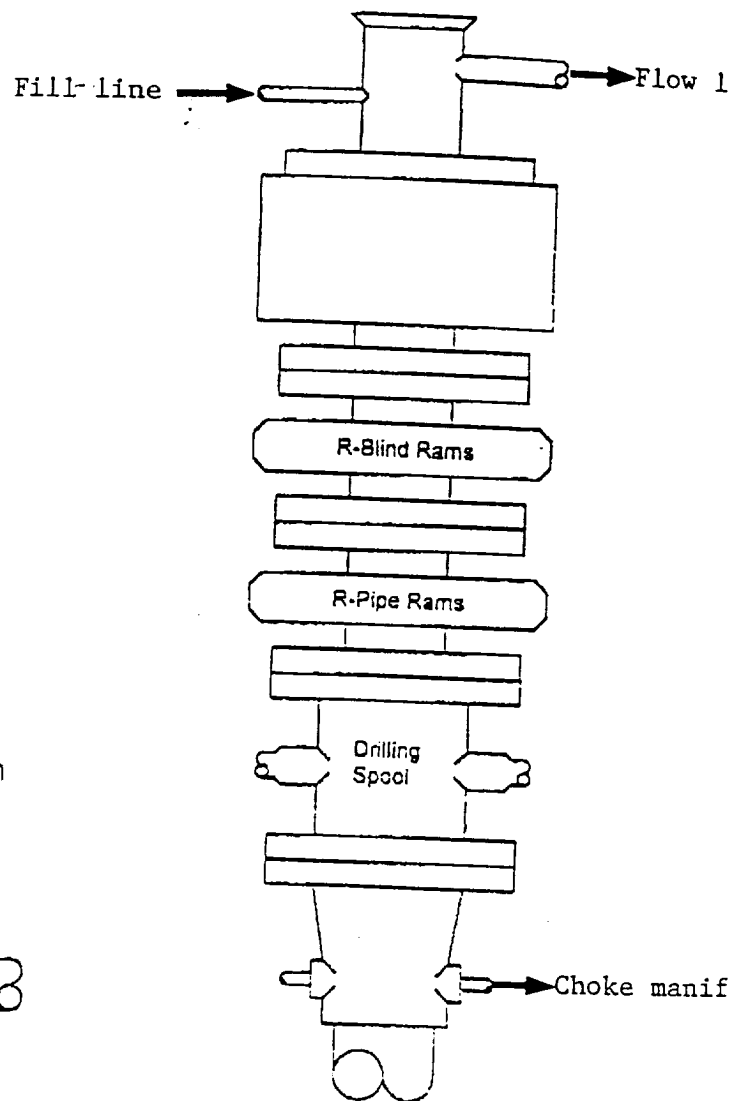
OPERATOR POGO PRODUCING COMPANY

LEASE HARROUN "10"

U.S.G.S. TOPOGRAPHIC MAP  
PIERCE CAYON, N.M.

JOHN WEST SURVEYING  
HOBBS, NEW MEXICO  
(505) 393-3117

# BLOWOUT PREVENTER SYSTEM



Type 900 Series  
3000 psi WP

## Choke Manifold Assembly for 3M WP System

