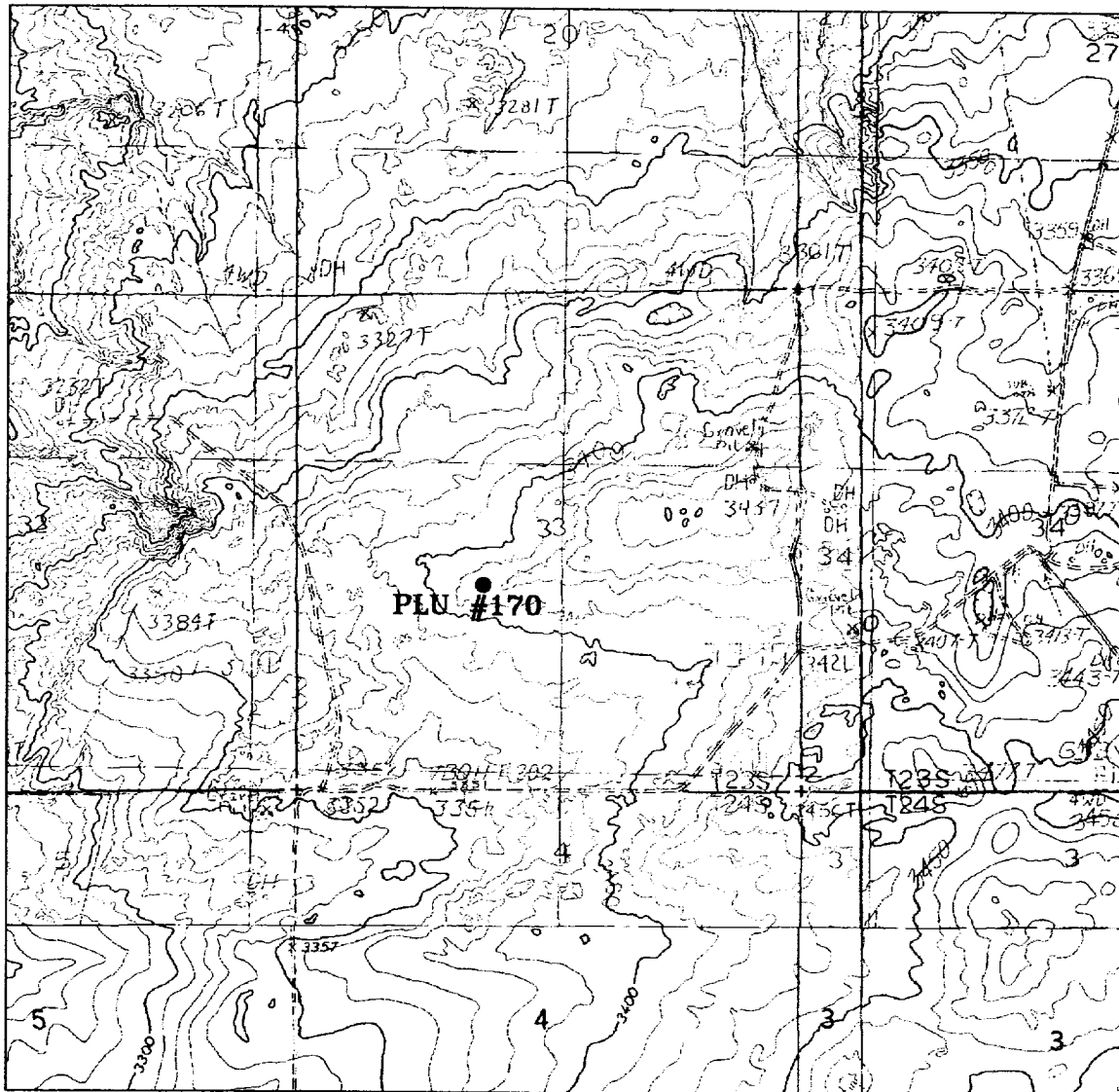


CONFIDENTIAL



POKER LAKE UNIT #170

Located at 2180' FSL and 1980' FWL
Section 33, Township 23 South, Range 30 East,
N.M.P.M., Eddy County, New Mexico.

basin
surveys

focused on excellence
in the oilfield

P.O. Box 1786
1120 N. West County Rd.
Hobbs, New Mexico 88241
(505) 393-7316 - Office
(505) 392-3074 - Fax
basinsurveys.com

W.O. Number: 0735AA - KJG CD#3

Survey Date: 01-10-2001

Scale: 1" = 2000'

Date: 01-11-2001

BASS ENTERPRISES
PRODUCTION CO.