

District I
PO Box 1980, Hobbs, NM 88241-1980

District II
811 South First, Artesia, NM 88210

District III
1000 Rio Brazos Rd., Aztec, NM 87410

District IV
2040 South Pacheco, Santa Fe, NM 87505

State of New Mexico
Energy, Minerals & Natural Resources Department

OIL CONSERVATION DIVISION
2040 South Pacheco
Santa Fe, NM 87505

Form C-101
Revised October 18, 1994
Instructions on back
Submit to Appropriate District Office
State Lease - 6 Copies
Fee Lease - 5 Copies

☐ AMENDED REPORT

APPLICATION FOR PERMIT TO DRILL, RE-ENTER, DEEPEN, PLUGBACK, OR ADD A ZONE

1 Operator Name and Address Mewbourne Oil Company PO Box 5270 Hobbs, New Mexico 88241		2 OGRID Number 14744
		3 API Number 30 - 015-32121
4 Property Code 29115	5 Property Name Stetson Creek 13 State Com	6 Well No. 1

7 Surface Location

UL or lot no.	Section	Township	Range	Lot Idn	Feet from the	North/South line	Feet from the	East/West Line	County
C	13	24S	24E		700	North	1900	West	Eddy

8 Proposed Bottom Hole Location If Different From Surface

UL or lot no.	Section	Township	Range	Lot Idn	Feet from the	North/South line	Feet from the	East/West Line	County
9 Proposed Pool 1 Baldridge Canyon Morrow					10 Proposed Pool 2				

11 Work Type Code N	12 Well Type Code G	13 Cable/Rotary R	14 Lease Type Code S	15 Ground Level Elevation 4158
16 Multiple	17 Proposed Depth 11100	18 Formation Morrow	19 Contractor TBA	20 Spud Date 12-26-01

21 Proposed Casing and Cement Program

Hole Size	Casing Size	Casing weight/foot	Setting Depth	Sacks of Cement	Estimated TOC
17 1/2"	13 3/8"	48#	400	400	Surface
12 1/4"	8 5/8"	32#	2600	800	Surface
7 7/8"	5 1/2"	17#	11100	600	Wolfcamp

22 Describe the proposed program. If this application is to DEEPEN or PLUG BACK give the data on the present productive zone and proposed new productive zone. Describe the blowout prevention program, if any. Use additional sheets if necessary.

BOP Program attached.

Mud Program:

0-400'...FW w/ sweeps
400'-2600'...FW w/ sweeps
2600'-9000'...Cut Brine w/ sweeps
9000'-TD...Cut brine & Mud

NOTIFY SPUD & TIME TO WITNESS
CEMENTING of 9-5/8" CASING

23 I hereby certify that the information given above is true and complete to the best of my knowledge and belief.

Signature: *N.M. Young*
Printed name: N.M. Young

Title: District Manager

Approved By: *[Signature]*

OIL CONSERVATION DIVISION

ORIGINAL SIGNED BY TIM W. GUM
DISTRICT II SUPERVISOR

Approval Date:

DEC 12 2001

Expiration Date:

DEC 12 2002

DISTRICT II

811 South First, Artesia, NM 88210

DISTRICT III

1000 Rio Brazos Rd., Aztec, NM 87410

DISTRICT IV

2040 South Pacheco, Santa Fe, NM 87505

OIL CONSERVATION DIVISION

P.O. Box 2088

Santa Fe, New Mexico 87504-2088

☐ AMENDED REPORT

WELL LOCATION AND ACREAGE DEDICATION PLAT

API Number	Pool Code	Pool Name Baldridge Canyon Morrow
Property Code	Property Name STETSON CREEK "13" STATE COM.	Well Number 1
OGRID No. 14744	Operator Name MEWBOURNE OIL COMPANY	Elevation 4158

Surface Location

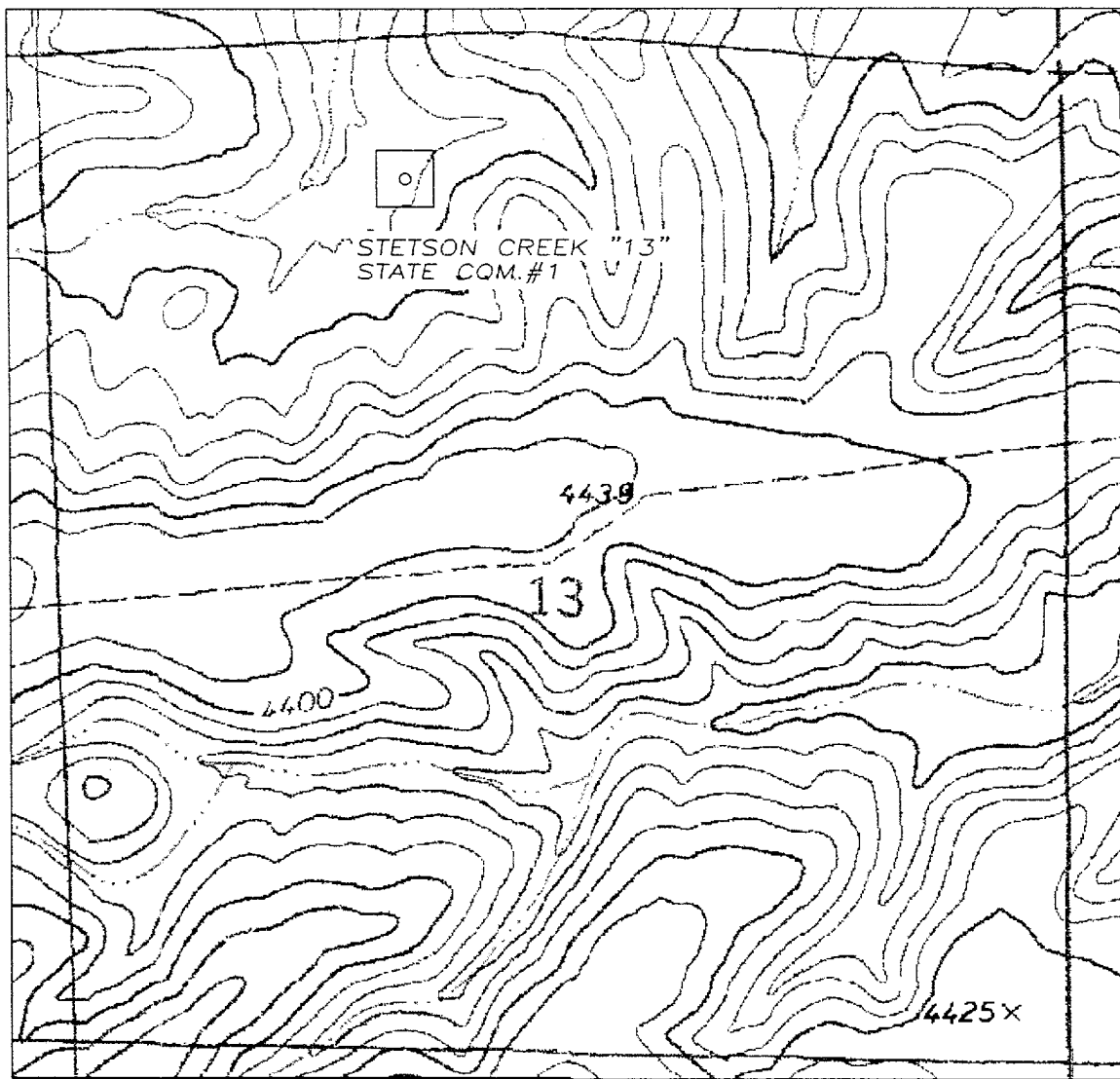
UL or lot No. C	Section 13	Township 24S	Range 24E	Lot Idn	Feet from the 700	North/South line NORTH	Feet from the 1900	East/West line WEST	County EDDY
--------------------	---------------	-----------------	--------------	---------	----------------------	---------------------------	-----------------------	------------------------	----------------

Bottom Hole Location If Different From Surface

UL or lot No.	Section	Township	Range	Lot Idn	Feet from the	North/South line	Feet from the	East/West line	County
Dedicated Acres 320	Joint or Infill	Consolidation Code	Order No.						

NO ALLOWABLE WILL BE ASSIGNED TO THIS COMPLETION UNTIL ALL INTERESTS HAVE BEEN CONSOLIDATED
OR A NON-STANDARD UNIT HAS BEEN APPROVED BY THE DIVISION

	OPERATOR CERTIFICATION I hereby certify the the information contained herein is true and complete to the best of my knowledge and belief. Signature _____ N.M. Young Printed Name District Manager Title 12/10/01 Date	
	SURVEYOR CERTIFICATION I hereby certify that the well location shown on this plat was plotted from field notes of actual surveys made by me or under my supervision, and that the same is true and correct to the best of my belief. Date Surveyed 12/04/2001 Signature & Seal of Professional Surveyor Certificate No. Herschel L. Jones RLS 3640 STETSON 13- AND SURVEYOR GENERAL SURVEYING COMPANY	



1000' 0 1000' 2000'
Scale 1" = 1000'

THE PREPARATION OF THIS PLAN AND THE PERFORMANCE OF THE SURVEY UPON WHICH IT IS BASED WERE DONE UNDER MY DIRECTION AND THE PLAN ACCURATELY DEPICTS THE RESULTS OF SAID SURVEY AND MEETS THE REQUIREMENTS OF THE STANDARDS FOR LAND SURVEYS IN NEW MEXICO AS ADOPTED BY THE NEW MEXICO STATE BOARD OF REGISTRATION FOR PROFESSIONAL ENGINEERS AND LAND SURVEYORS.

[Signature]
HERSCHEL L. JONES, R.L.S. No. 3640

GENERAL SURVEYING COMPANY P.O. BOX 1928
LOVINGTON, NEW MEXICO 88260

MEWBOURNE OIL COMPANY

MEWBOURNE STETSON CREEK "13" STATE
COM. #1 WELL LOCATED IN SECTION 13,
TOWNSHIP 24 SOUTH, RANGE 24 EAST, NMPM,
EDDY COUNTY, NEW MEXICO.

Survey Date: 12/04/2001	Sheet 1 of 1 Sheets
Drawn By: Ed Blevins	W.O. Number
Date: 12/04/01	Scale 1" = 1000' STETSON

Mewbourne Oil Company
BOP Scematic for
8 3/4" or 7 7/8" Hole

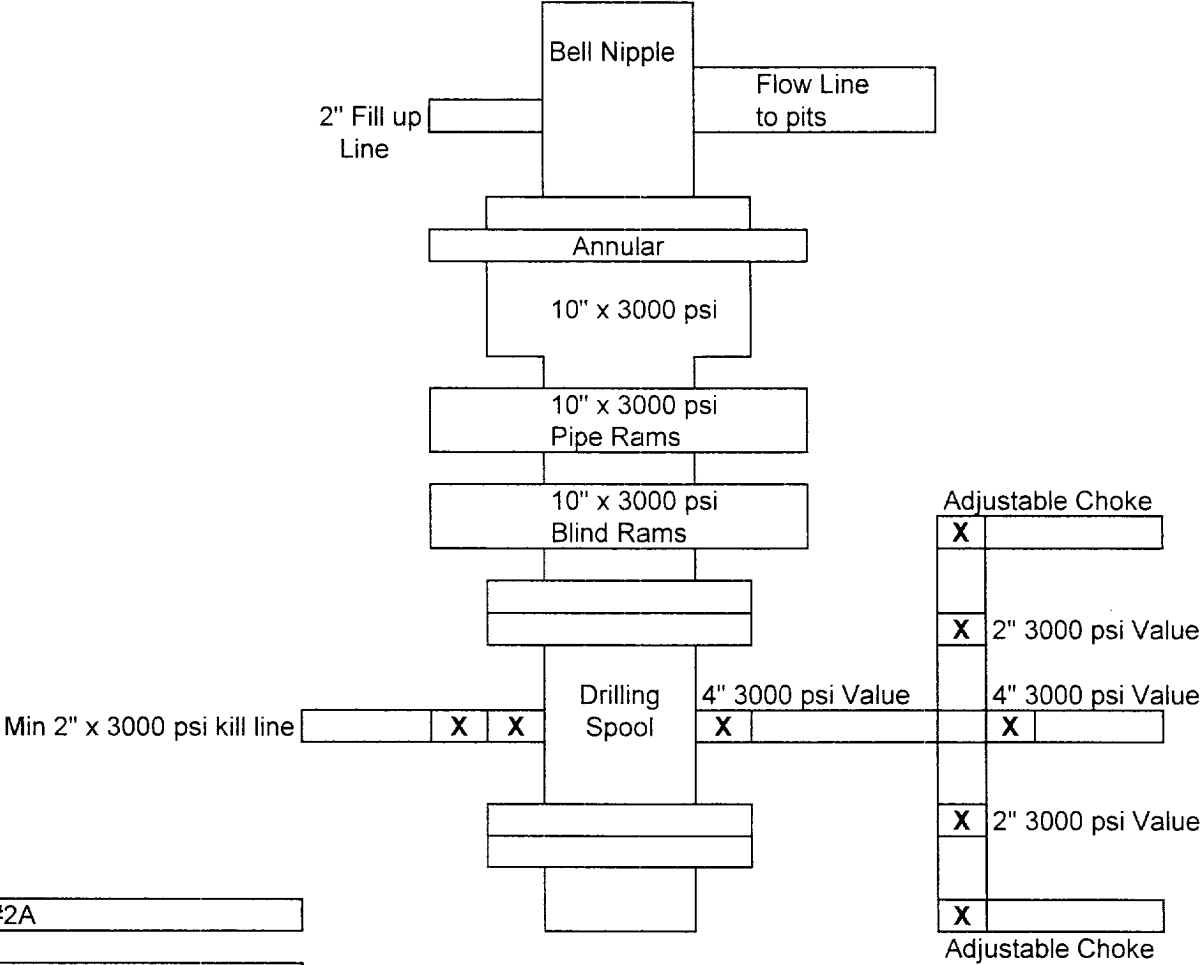


Exhibit #2A

Stetson Creek 13 State Com #1
700' FNL & 1900' FWL
Sec.13 T-24S R-24E
Eddy, County New Mexico

Mewbourne Oil Company

BOP Schematic for
12 1/4" Hole

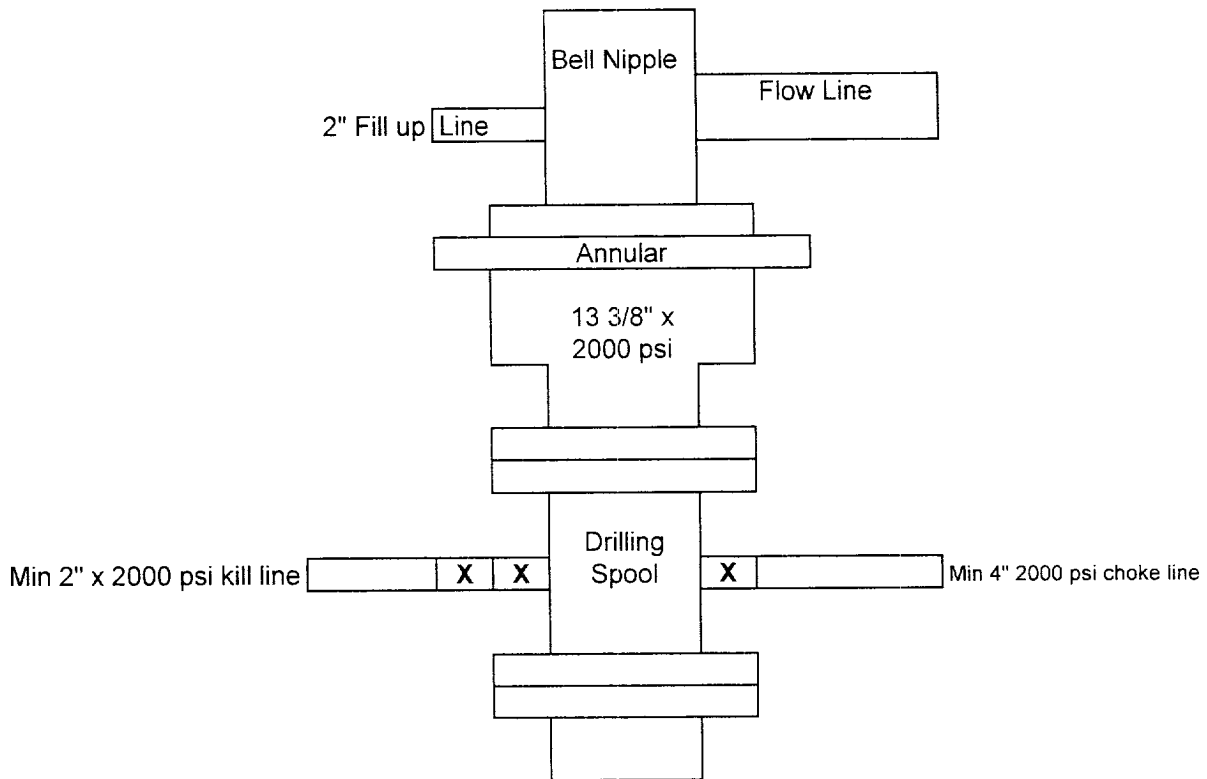


Exhibit #2

Stetson Creek 13 State Com #1
700' FNL & 1900' FWL
Sec.13 T-24S R-24E
Eddy, County New Mexico