

District I
1625 N. French Dr., Hobbs, NM 88240

District II
811 South First, Artesia, NM 88210

District III
1000 Rio Brazos Rd., Aztec, NM 87410

District IV
2040 South Pacheco, Santa Fe, NM 87505

State of New Mexico
Energy, Minerals & Natural Resources

OIL CONSERVATION DIVISION
2040 South Pacheco
Santa Fe, NM 87505

Form C-101
Revised March 12, 1999

Submit to Appropriate District Office
State Lease - 6 Copies
Fee Lease - 5 Copies

☐ AMENDED REPORT

APPLICATION FOR PERMIT TO DRILL, RE-ENTER, DEEPEN, PLUGBACK OR ADD A ZONE

¹ Operator Name and Address Louis Dreyfus Natural Gas Corp. 14000 Quail Springs Parkway - Suite 300 Oklahoma City, OK 73134		² OGRID Number 25773
⁴ Property Code 29151	³ Property Name Saragossa "19" State Com	³ API Number 30-0 15-32144
		⁶ Well No. 1

⁷ Surface Location									
UL or lot no.	Section	Township	Range	Lot ldn	Feet from the	North/South line	Feet from the	East/West line	County
C	19	23S	26E		660	North	1600	West	Eddy

⁸ Proposed Bottom Hole Location If Different From Surface									
UL or lot no.	Section	Township	Range	Lot ldn	Feet from the	North/South line	Feet from the	East/West line	County
⁹ Proposed Pool 1 Undesignated Carlsbad Morrow, South					¹⁰ Proposed Pool 2				

¹¹ Work Type Code N	¹² Well Type Code G	¹³ Cable/Rotary Rotary	¹⁴ Lease Type Code S	¹⁵ Ground Level Elevation 3436'
¹⁶ Multiple N	¹⁷ Proposed Depth 12,000	¹⁸ Formation Morrow	¹⁹ Contractor Patterson	²⁰ Spud Date 12/25/01

²¹ Proposed Casing and Cement Program					
Hole Size	Casing Size	Casing weight/foot	Setting Depth	Sacks of Cement	Estimated TOC
7 1/2"	13 3/8"	48#	675'	550 sk	Surface
2 1/4"	9 5/8"	36#	2800'	675 sk	Surface
8 3/4"	7"	23# & 26#	9700'	750 sk	4500'
6 1/8"	4 1/2" Liner	13.5	12000'	325 sk	9300'
			1800 - 2000' B&D		

²² Describe the proposed program. If this application is to DEEPEN or PLUG BACK give the data on the present productive zone and proposed new productive zone. Describe the blowout prevention program, if any. Use additional sheets if necessary.

- 2000'
1. Drill 17 1/2" hole to \pm 675'. Run 13 3/8" csg and cement to surface w/550 sks cement.
 2. Drill 12 1/4" hole to \pm 2,800'. Set 9 5/8" csg and cement to surface w/675 sks cement.
 3. Drill 8 3/4" hole to \pm 9,700'. Run 7" csg and cement to 4,500' w/750 sks cement.
 4. Drill 6 1/8" hole to \pm 12,000'. Run 4 1/2" liner and cement to 9,300' w/325 sks cement.
- See attached "Exhibit 6" for BOP assembly.



²³ I hereby certify that the information given above is true and complete to the best of my knowledge and belief.		OIL CONSERVATION DIVISION	
Signature: <i>Carla Christian</i>		Approved by: ORIGINAL SIGNED BY TIM W. GUN	
Printed name: Carla Christian		Title: DISTRICT II SUPERVISOR	
Title: Regulatory Technician		Approval Date: JAN 02 2001 Expiration Date: JAN 02 2002	
Date: 12/17/2001	Phone: 405-749-5263	Condition of Approval: Attached <input type="checkbox"/>	

DISTRICT I
1826 N. French Dr., Hobbs, NM 88240

DISTRICT II
811 South First, Artesia, NM 88210

DISTRICT III
1000 Rio Brazos Rd., Aztec, NM 87410

DISTRICT IV
2040 South Pacheco, Santa Fe, NM 87505

State of New Mexico
Energy, Minerals and Natural Resources Department

Form C-102
Revised March 17, 1999

Submit to Appropriate District Office
State Lease - 4 Copies
Fee Lease - 3 Copies

OIL CONSERVATION DIVISION

2040 South Pacheco
Santa Fe, New Mexico 87504-2088

☐ AMENDED REPORT

WELL LOCATION AND ACREAGE DEDICATION PLAT

API Number	Pool Code	Pool Name
		Undesignated Carlsbad Morrow, South
Property Code	Property Name	Well Number
	SARAGOSSA "19" STATE COM	1
OGRD No.	Operator Name	Elevation
025773	Louis Dreyfus Natural Gas Corporation	3436'

Surface Location

UL or lot No.	Section	Township	Range	Lot Idn	Feet from the	North/South line	Feet from the	East/West line	County
C	19	23 S	26 E		660	NORTH	1600	WEST	EDDY

Bottom Hole Location If Different From Surface

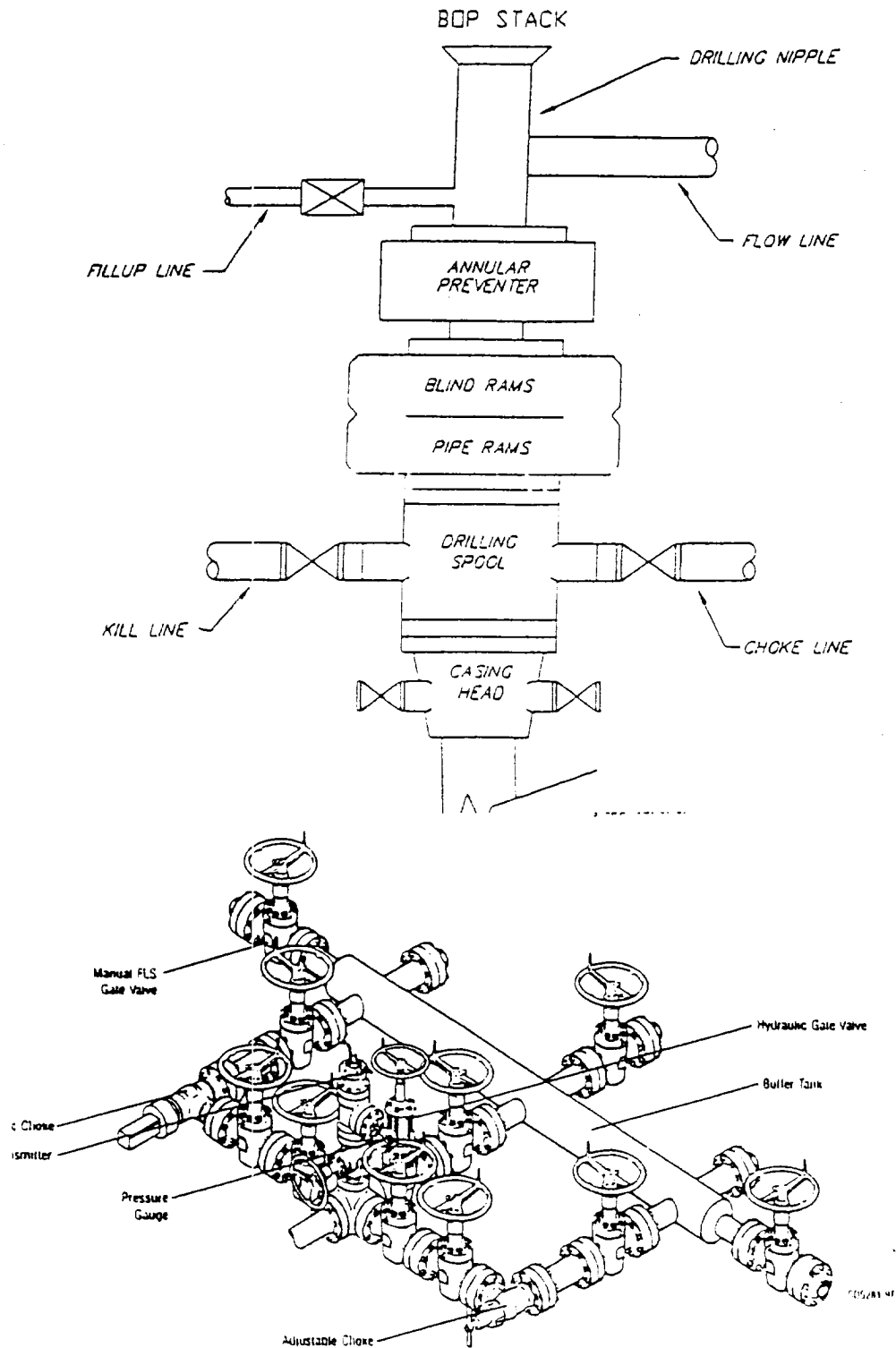
UL or lot No.	Section	Township	Range	Lot Idn	Feet from the	North/South line	Feet from the	East/West line	County
Dedicated Acres	Joint or Infill	Consolidation Code	Order No.						
320	N								

NO ALLOWABLE WILL BE ASSIGNED TO THIS COMPLETION UNTIL ALL INTERESTS HAVE BEEN CONSOLIDATED
OR A NON-STANDARD UNIT HAS BEEN APPROVED BY THE DIVISION

		OPERATOR CERTIFICATION I hereby certify the the information contained herein is true and complete to the best of my knowledge and belief. Signature Mike Donovan Printed Name Consultant Title December 18, 2001 Date	
State Lease L-654		State Lease V-5021	
		SURVEYOR CERTIFICATION I hereby certify that the well location shown on this plat was plotted from field notes of actual surveys made by me or under my supervision, and that the same is true and correct to the best of my belief. December 14, 2001 Date Signature & Seal of Professional Surveyor W.O. No. 2145 Certificate No. Gary L. Jones 7977	

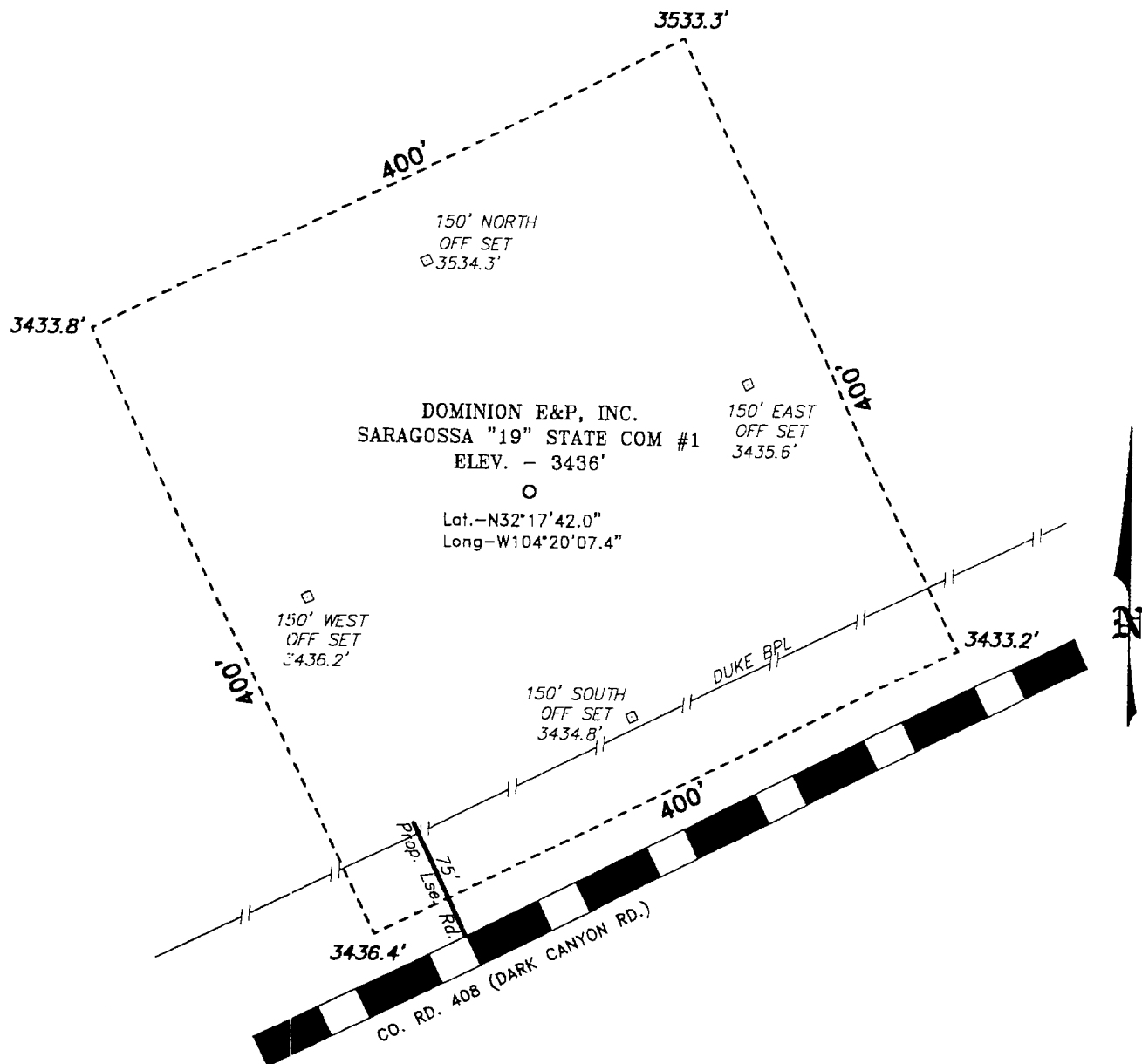
Exhibit 6

TYPICAL 5,000 p.s.i. BLOWOUT PREVENTER & CHOKE MANIFOLD SCHEMATIC



Typical Choke Manifold Designed for Land Drilling Applications

SECTION 19, TOWNSHIP 23 SOUTH, RANGE 26 EAST, N.M.P.M.,
EDDY COUNTY, NEW MEXICO.



Directions to Location:

FROM THE JUNCTION OF CO. RD. 408(DARK CANYON RD) AND US HWY 62/180, GO WEST ON DARK CANYON ROAD FOR 3.0 MILES TO A PROPOSED LEASE ROAD.

100 0 100 200 FEET

SCALE: 1" = 100'

DOMINION E&P, INC.

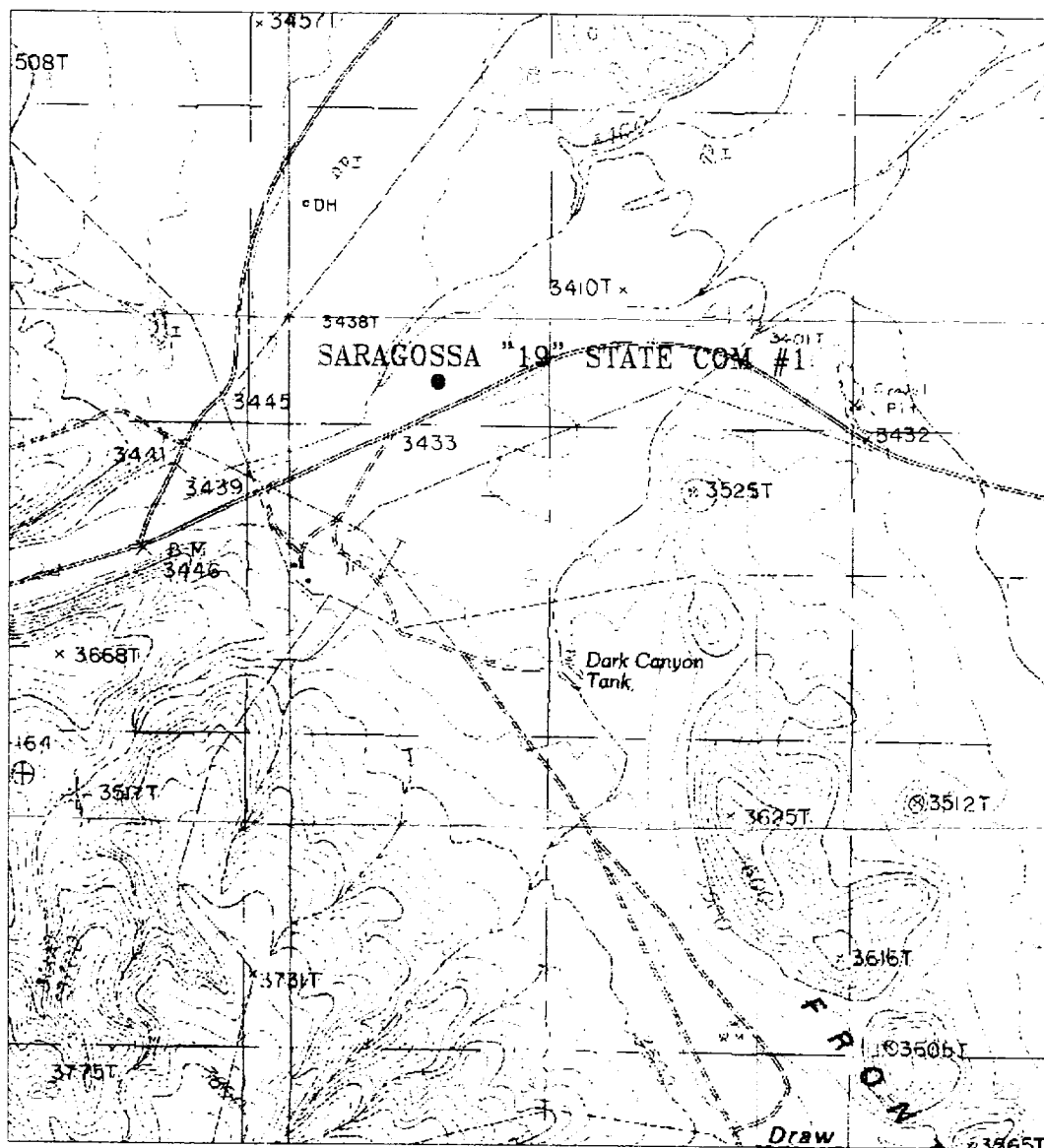
REF: SARAGOSSA "19" STATE COM #1 / Well Pad Topo

THE SARAGOSSA "19" STATE COM. No. 1 LOCATED 660' FROM THE NORTH AND 1600' FROM THE WEST LINE OF SECTION 19, TOWNSHIP 23 SOUTH, RANGE 26 EAST, N.M.P.M., EDDY COUNTY, NEW MEXICO.

BASIN SURVEYS P.O. BOX 1786-HOBBS, NEW MEXICO

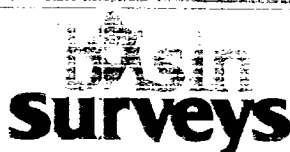
W.O. Number: 2145 Drawn By: **K. GOAD**

Date: 12-17-2001 Disk: KIC CD#4 2145A.DWG



SARAGOSSA "19" STATE COM #1

Located at 880' FNL and 1600' FNL
 Section 19, Township 28 South, Range 04 West,
 N.M.P.M., Eddy County, New Mexico

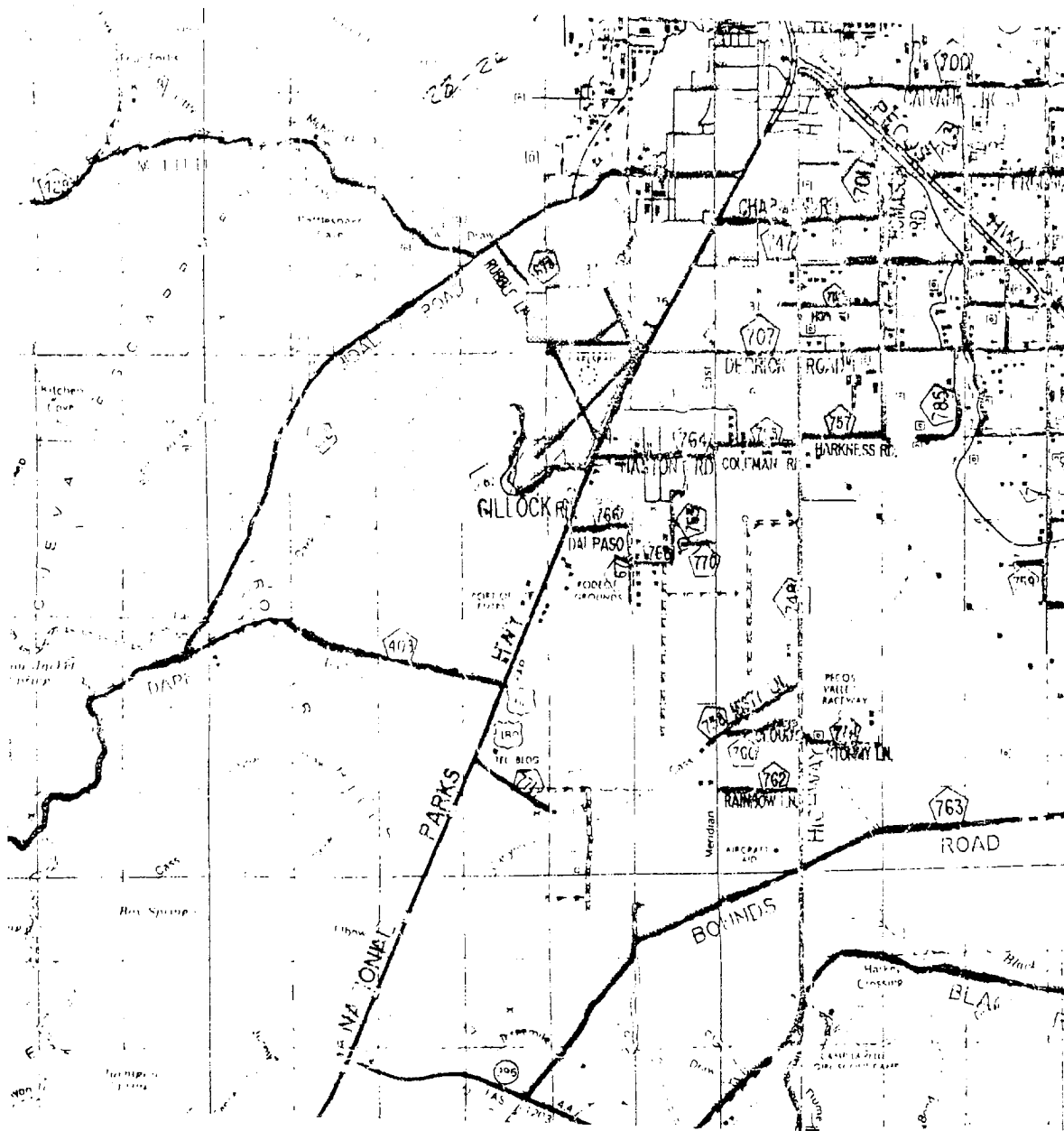


focused on excellence
 in the oilfield

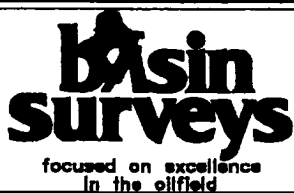
P.O. Box 1788
 1120 N. West County Rd.
 Hobbs, New Mexico 88241
 (505) 393-7316 - Office
 (505) 392-3074 - Fax
 basin-surveys.com

W.C. Number	211000	KJC 0070
Survey Date	12-14-2001	
Scale	1" = 2000'	
Date	12-17-2001	

DOMINION
 E&P, INC.



SARAGOSSA "19" STATE COM #1
 Located at 660' FNL and 1600' FWL
 Section 19, Township 23 South, Range 26 East,
 N.M.P.M., Eddy County, New Mexico.



P.O. Box 1786
 1120 N. West County Rd.
 Hobbs, New Mexico 88241
 (505) 393-7316 - Office
 (505) 392-3074 - Fax
 basinsurveys.com

W.O. Number: 2145AA - KJG CD#5

Survey Date: 12-14-2001

Scale: 1" = 2 MILE

Date: 12-17-2001

DOMINION
 E&P, INC.