

District I  
PO Box 1980, Hobbs, NM 88241-1980

District II  
811 South First, Artesia, NM 88210

District III  
1000 Rio Brazos Rd., Aztec, NM 87410

District IV  
2040 South Pacheco, Santa Fe, NM 87505

State of New Mexico  
Energy, Minerals & Natural Resources Department

OIL CONSERVATION DIVISION  
2040 South Pacheco  
Santa Fe, NM 87505

Form C-101  
Revised October 18, 1994  
Instructions on back  
Submit to Appropriate District Office  
State Lease - 6 Copies  
Fee Lease - 5 Copies

☐ AMENDED REPORT

APPLICATION FOR PERMIT TO DRILL, RE-ENTER, DEEPEN, PLUGBACK, OR ADD A ZONE

1Operator Name and Address Mewbourne Oil Company PO Box 5270 Hobbs, NM 88240		2OGRID Number 14744
		3API Number 30 - 0 15- 32400
4Property Code 30394	5Property Name Willow Lake "26" Fee Com	6Well No. 1

7Surface Location

UL or lot no.	Section	Township	Range	Lot Idn	Feet from the	North/South line	Feet from the	East/West Line	County
M	26	24S	28E		900	South	660	West	Eddy

8Proposed Bottom Hole Location If Different

UL or lot no.	Section	Township	Range	Lot Idn	Feet from the	North/South line	County
9Proposed Pool 1 Salt Draw Atoka							

Cement to cover all oil, gas and water bearing zones.

11Work Type Code N	12Well Type Code G	13Cable/Rotary R	14Lease Type Code P	15Ground Level Elevation 2954
16Multiple	17Proposed Depth 12300	18Formation Atoka	19Contractor TBA	20Spud Date

21Proposed Casing and Cement Program

Hole Size	Casing Size	Casing weight/foot	Setting Depth	Sacks of Cement	Estimated TOC
17 1/2"	13 3/8"	48#	400	400	Surface
12 1/4"	9 5/8"	40#	5000	1200	Surface
8 3/4"	5 1/2"	17#	12300	800	Above Wolfcamp?
* Operator To Set 13 3/8" casing above Salado @ 300' ±					

22Describe the proposed program. If this application is to DEEPEN or PLUG BACK give the data on the present productive zone and proposed new productive zone. Describe the blowout prevention program, if any. Use additional sheets if necessary.

BOP Program Attached  
0-400' FW with sweeps  
400'-5000' Salt water with sweeps  
5000'-10000' FW with sweeps  
10000'-12300' Cut Brine - Brine with mud

OIL CONSERVATION DIVISION

23I hereby certify that the information given above is true and complete to the best of my knowledge and belief.

Signature:

Approved By:

ORIGINAL SIGNED BY TIM W. GUM  
DISTRICT II SUPERVISOR

Printed name:

Kristi Green for NM Young

Title:

Title:

Production Assistant for District Manager

Approval Date:

AUG 12 2002

Expiration Date:

AUG 12 2003

## DISTRICT II

811 South First, Artesia, NM 88210

Instruction on back  
Submit to Appropriate District Office

## DISTRICT III

1000 Rio Brazos Rd., Aztec, NM 87410

State Lease - 4 Copies

Fee Lease - 3 Copies

## DISTRICT IV

2040 South Pacheco, Santa Fe, NM 87505

## OIL CONSERVATION DIVISION

P.O. Box 2088

Santa Fe, New Mexico 87504-2088

☐ AMENDED REPORT

## WELL LOCATION AND ACREAGE DEDICATION PLAT

API Number	Pool Code	Pool Name Salt Draw Atoka
Property Code	Property Name WILLOW LAKE "26" FEE COM.	Well Number 1
OGRID No. 14744	Operator Name MEWBOURNE OIL COMPANY	Elevation 2954

## Surface Location

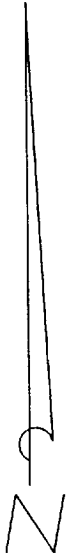
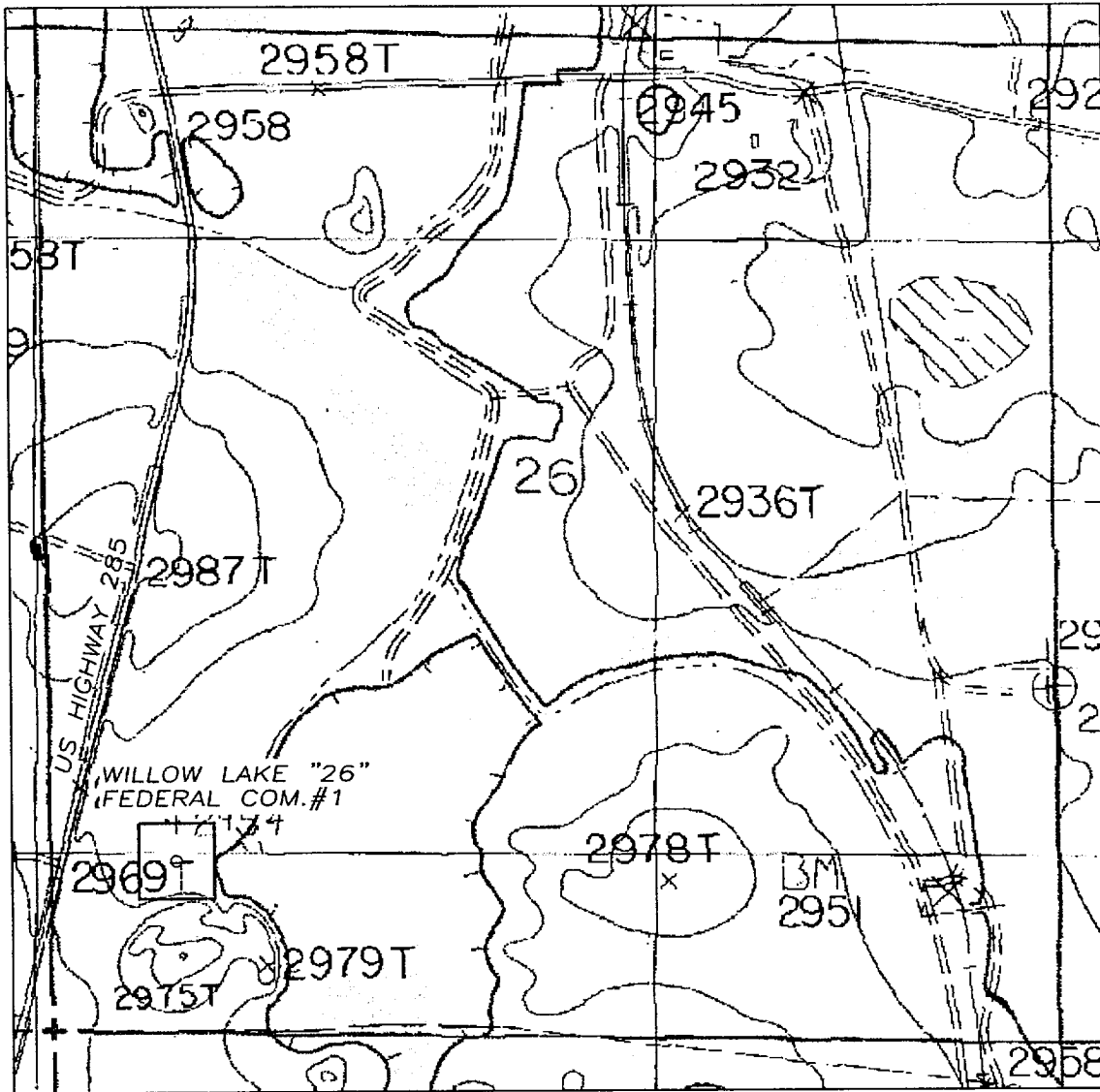
UL or lot No.	Section	Township	Range	Lot Idn	Feet from the	North/South line	Feet from the	East/West line	County
M	26	24S	28E		900	SOUTH	660	WEST	EDDY

## Bottom Hole Location If Different From Surface

UL or lot No.	Section	Township	Range	Lot Idn	Feet from the	North/South line	Feet from the	East/West line	County
Dedicated Acres 320	Joint or Infill	Consolidation Code	Order No.						

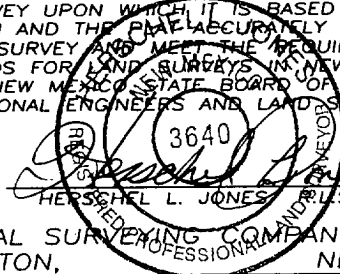
NO ALLOWABLE WILL BE ASSIGNED TO THIS COMPLETION UNTIL ALL INTERESTS HAVE BEEN CONSOLIDATED  
OR A NON-STANDARD UNIT HAS BEEN APPROVED BY THE DIVISION

	<b>OPERATOR CERTIFICATION</b>  I hereby certify the the information contained herein is true and complete to the best of my knowledge and belief.  Signature <u>NM Young</u> Printed Name <u>District Manager</u> Title <u>07/31/2002</u> Date	
	<b>SURVEYOR CERTIFICATION</b>  I hereby certify that the well location shown on this plat was plotted from field notes of actual surveys made by me or under my supervision, and that the same is true and correct to the best of my belief.  <u>3/26/2002</u> Date Surveyed	
	Signature & Seal of Professional Surveyor 	
	Certificate No. <u>Herschel L. Jones RLS 3640</u> <u>WILLOW LAKE 26</u> GENERAL SURVEYING COMPANY	



1000' 0 1000' 2000'  
Scale 1" = 1000'

THE PREPARATION OF THIS PLAT AND THE PERFORMANCE OF THE SURVEY UPON WHICH IT IS BASED WERE DONE UNDER MY DIRECTION AND THE PLAT ACCURATELY DEPICTS THE RESULTS OF SAID SURVEY AND MEET THE REQUIREMENTS OF THE STANDARDS FOR LAND SURVEYS IN NEW MEXICO AS ADOPTED BY THE NEW MEXICO STATE BOARD OF REGISTRATION FOR PROFESSIONAL ENGINEERS AND LAND SURVEYORS.



HERSHEL L. JONES, S. No. 3640

GENERAL SURVEYING COMPANY P.O. BOX 1928  
LOVINGTON, NEW MEXICO 88260

## MEWBOURNE OIL COMPANY

MEWBOURNE WILLOW LAKE "26" FEDERAL  
COM.#1 WELL LOCATED IN SECTION 26,  
TOWNSHIP 24 SOUTH, RANGE 28 EAST, NMPM,  
EDDY COUNTY, NEW MEXICO.

Survey Date: 3/26/2002	Sheet 1 of 1 Sheets
Drawn By: Ed Blevins	W.O. Number
Date: 3/26/02	Scale 1" = 1000'

Mewbourne Oil Company  
BOP Scematic for  
12 1/4" Hole

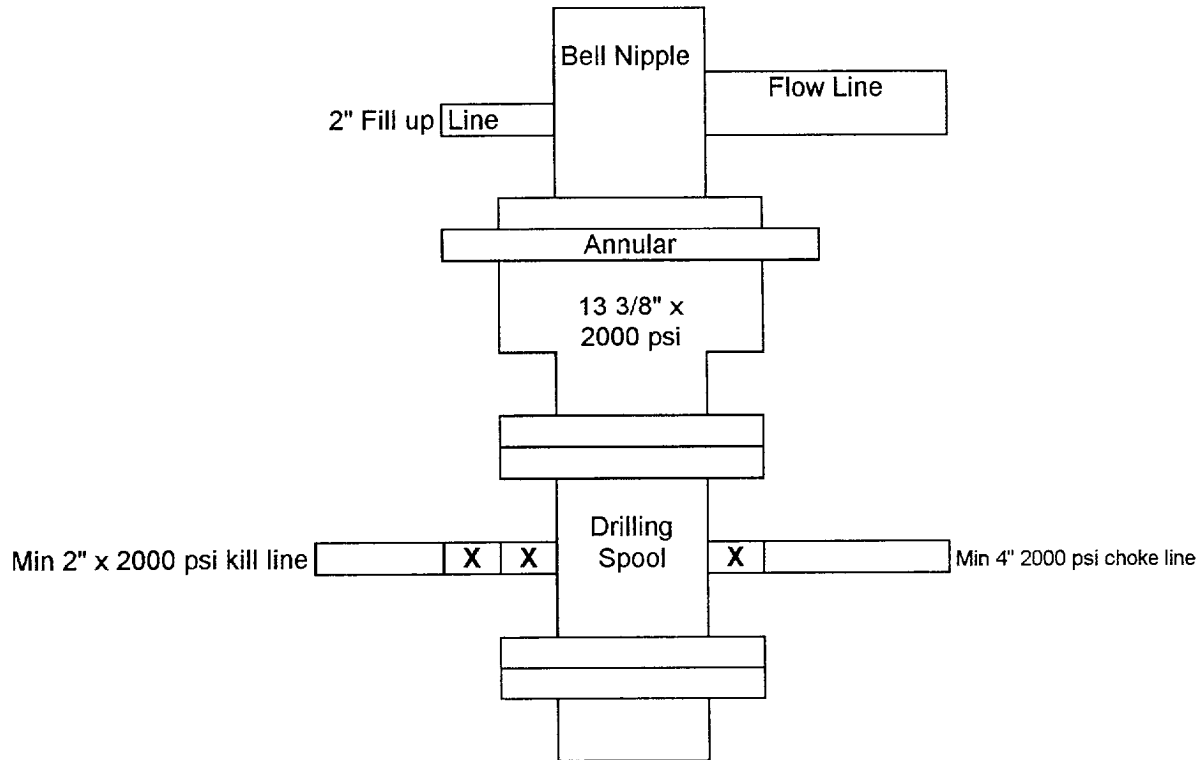


Exhibit #2

Willow Lake 26 Fee Com #1  
900' FSL & 660' FWL  
Sec.26 T-24S R-28E  
Eddy, County New Mexico

Mewbourne Oil Company  
BOP Scematic for  
8 3/4" or 7 7/8" Hole

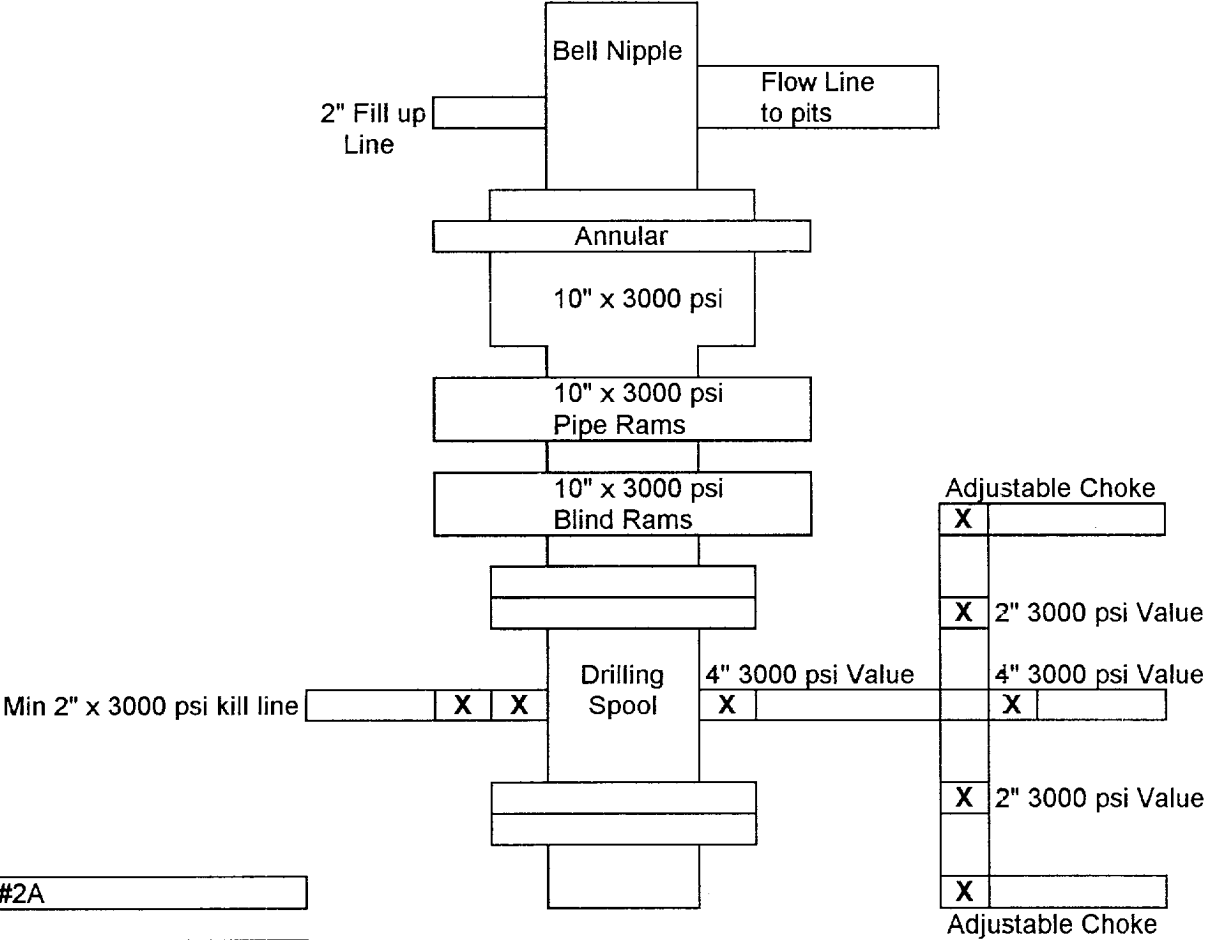


Exhibit #2A

Willow Lake 26 Fee Com #1  
900' FSL & 660' FWL  
Sec.26 T-24S R-28E  
Eddy, County New Mexico