

District I
PO Box 1980, Hobbs, NM 88241-1980

District II
811 South First, Artesia, NM 88210

District III
1000 Rio Brazos Rd., Aztec, NM 87410

District IV
2040 South Pacheco, Santa Fe, NM 87505

State of New Mexico
Energy, Minerals & Natural Resources Department

Form C-101
Revised October 18, 1994

Instructions on back
Submit to Appropriate District Office
State Lease - 6 Copies
Fee Lease - 5 Copies

OIL CONSERVATION DIVISION
2040 South Pacheco
Santa Fe, NM 87505

☐ AMENDED REPORT

APPLICATION FOR PERMIT TO DRILL, RE-ENTER, DEEPEN, PLUG BACK, OR ADD A ZONE

Operator Name and Address Mewbourne Oil Company PO Box 5270 Hobbs, NM 88241		OGRID Number 14744
Property Name Layla 35 Fee Com		API Number 30-0 15-32409
Property Code 30418	Well No. 1	

Surface Location

UL or lot no.	Section	Township	Range	Lot Idn	Feet from the	North/South line	Feet from the	East/West Line	County
I	35	23S	28E		1650	South	1241	East	Eddy

Proposed Bottom Hole Location If Different From Surface

UL or lot no.	Section	Township	Range	Lot Idn	Feet from the	North/South line	Feet from the	East/West Line	County
Proposed Pool 1 Culebra Bluff Atoka					Proposed Pool 2				

Work Type Code N	Well Type Code G	Cable/Rotary R	Lease Type Code P	Ground Level Elevation 3002
Multiple	Proposed Depth 12150	Formation Atoka	Contractor TBA	Spud Date

Proposed Casing and Cement Program

Hole Size	Casing Size	Casing weight/foot	Setting Depth	Sacks of Cement	Estimated TOC
17 1/2"	13 3/8"	48#	500	500	Surface
12 1/4"	9 5/8"	40#	4300	1200	Surface
8 3/4"	5 1/2"	17#	12150	1200	* Above Wolfcamp ?

Describe the proposed program. If this application is to DEEPEN or PLUG BACK give the data on the present productive zone and proposed new productive zone. Describe the blowout prevention program, if any. Use additional sheets if necessary.

BOP schematics attached.

0-500' FW w/ sweeps.

500-4300' Brine water w/ sweeps.

4300-10000' FW w/ sweeps.

10000-12150' Cut Brine-Brine w/ Mud additives.

*
Cement to cover all oil, gas and
water bearing zones.

I hereby certify that the information given above is true and complete to the best of my knowledge and belief.

Signature:

Printed name: N.M. Young

Title: District Manager

OIL CONSERVATION DIVISION

Approved By:

ORIGINAL SIGNED BY TIM W. GUM
DISTRICT II SUPERVISOR

Title:

Approval Date:

AUG 20 2002

Expiration Date:

AUG 20 2003

DISTRICT II
811 South First, Artesia, NM 88210

DISTRICT III
1000 Rio Brazos Rd., Aztec, NM 87410

DISTRICT IV
2040 South Pacheco, Santa Fe, NM 87505

OIL CONSERVATION DIVISION

P.O. Box 2088
Santa Fe, New Mexico 87504-2088

☐ AMENDED REPORT

WELL LOCATION AND ACREAGE DEDICATION PLAT

API Number		Pool Code	Pool Name Culebra Bluff Atoka
Property Code	Property Name LAYLA "35" FEE COM.		Well Number 1
OGRID No. 14744	Operator Name MEWBOURNE OIL COMPANY		Elevation 3002

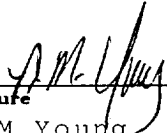
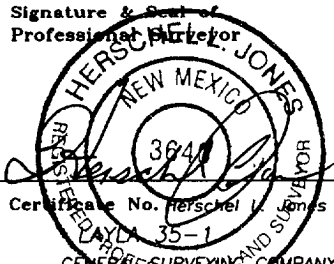
Surface Location

UL or lot No.	Section	Township	Range	Lot Idn	Feet from the	North/South line	Feet from the	East/West line	County
1	35	23S	28E		1650	SOUTH	1241	EAST	EDDY

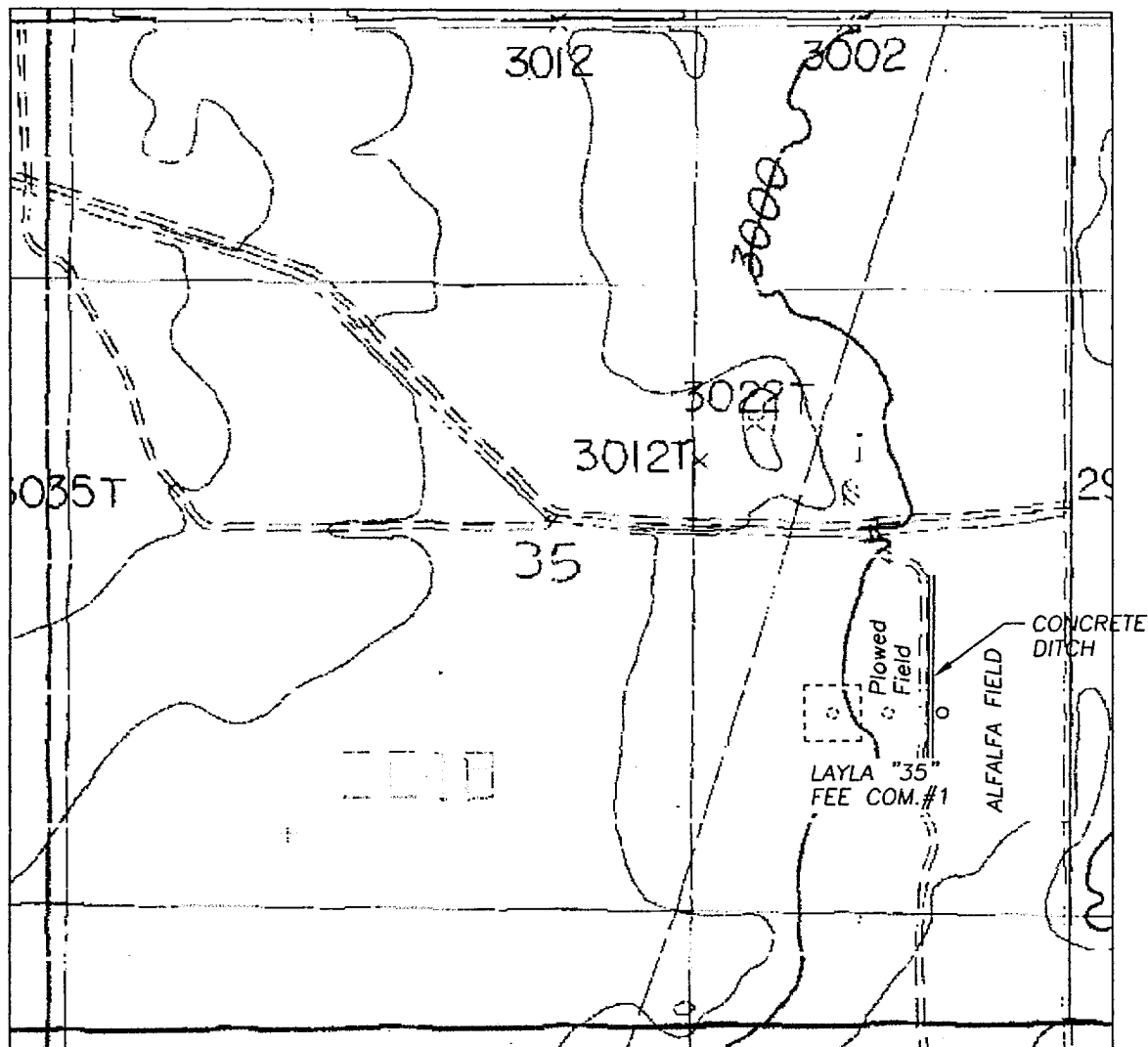
Bottom Hole Location If Different From Surface

UL or lot No.	Section	Township	Range	Lot Idn	Feet from the	North/South line	Feet from the	East/West line	County
Dedicated Acres 320	Joint or Infill	Consolidation Code		Order No.					

NO ALLOWABLE WILL BE ASSIGNED TO THIS COMPLETION UNTIL ALL INTERESTS HAVE BEEN CONSOLIDATED
OR A NON-STANDARD UNIT HAS BEEN APPROVED BY THE DIVISION

				<p>OPERATOR CERTIFICATION</p> <p><i>I hereby certify the the information contained herein is true and complete to the best of my knowledge and belief.</i></p> <p> Signature NM Young</p> <p>Printed Name District Manager</p> <p>Title 08/19/2002</p> <p>Date</p>
				<p>SURVEYOR CERTIFICATION</p> <p><i>I hereby certify that the well location shown on this plat was plotted from field notes of actual surveys made by me or under my supervision, and that the same is true and correct to the best of my belief.</i></p> <p>8/12/2002</p> <p>Date Surveyed</p> <p>Signature & Seal of Professional Surveyor</p> <p></p> <p>Certificate No. Herschel L. Jones RLS 3640</p> <p>GENERAL SURVEYING AND SURVEYOR COMPANY</p>

SECTION 35, TOWNSHIP 23 SC 1, RANGE 28 EAST, NMPM, EDDY COUNTY, NEW MEXICO.



1000' 0 1000' 2000'
Scale 1" = 1000'

THE PREPARATION OF THIS PLAT AND THE PERFORMANCE OF THE SURVEY UPON WHICH IT IS BASED WERE DONE UNDER MY DIRECTION AND THE PLAT ACCURATELY DEPICTS THE RESULTS OF SAID SURVEY AND MEET THE REQUIREMENTS OF THE STANDARDS FOR LAND SURVEYS IN NEW MEXICO AS ADOPTED BY THE NEW MEXICO STATE BOARD OF REGISTRATION FOR PROFESSIONAL ENGINEERS AND LAND SURVEYORS.

HERSCHEL L. JONES, R.L.S. No. 3640

GENERAL SURVEYING COMPANY P.O. BOX 1928
LOVINGTON, NEW MEXICO 88260

MEWBOURNE OIL COMPANY

LEASE ROAD TO ACCESS THE MEWBOURNE LAYLA "35" FEE COM. #1 WELL LOCATED IN SECTION 35, TOWNSHIP 23 SOUTH, RANGE 28 EAST, NMPM, EDDY COUNTY, NEW MEXICO.

Survey Date: 8/12/2002	Sheet 1 of 1 Sheets
Drawn By: Ed Blevins	W.O. Number
Date: 8/12/02	Scale 1" = 1000' LAYLA

Mewbourne Oil Company
BOP Schematic for
12 1/4" Hole

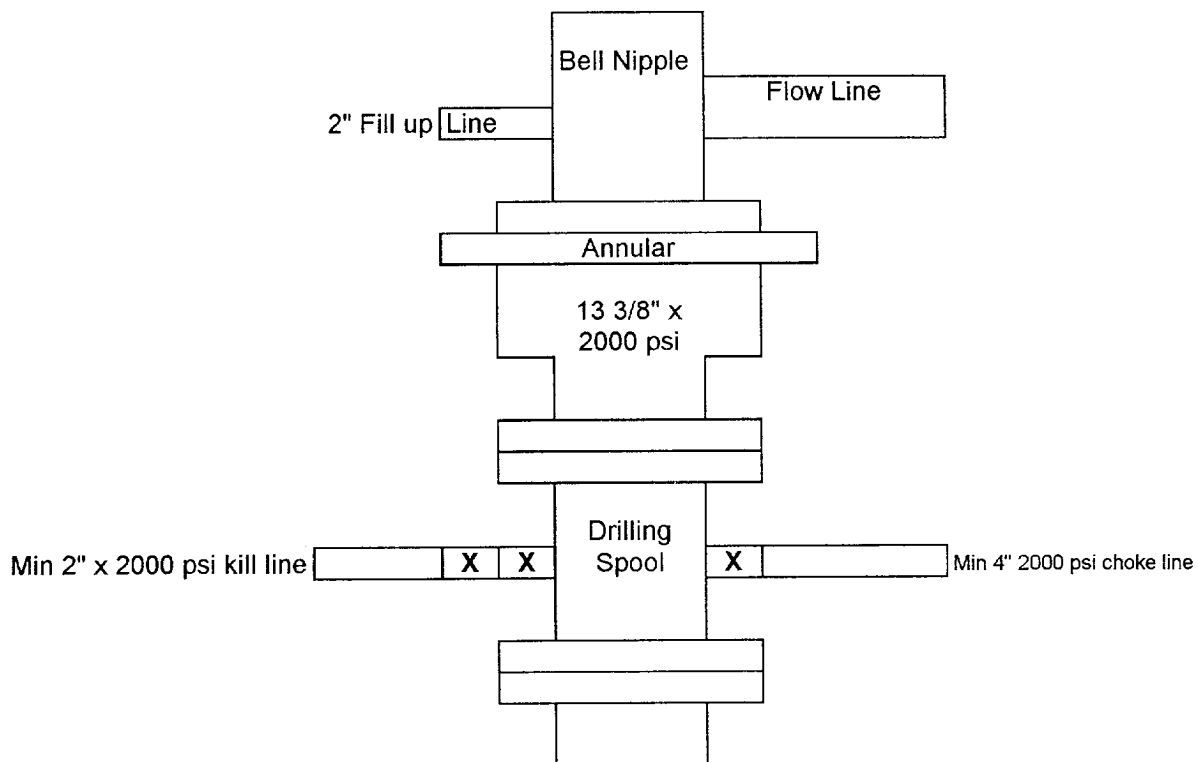


Exhibit #2

Layla 35 Fee Com #1
1650' FSL & 1241' FEL
Sec. 35 T-23S R-28E
Eddy, County New Mexico

Mewbourne Oil Company
BOP Scematic for
8 3/4" or 7 7/8" Hole

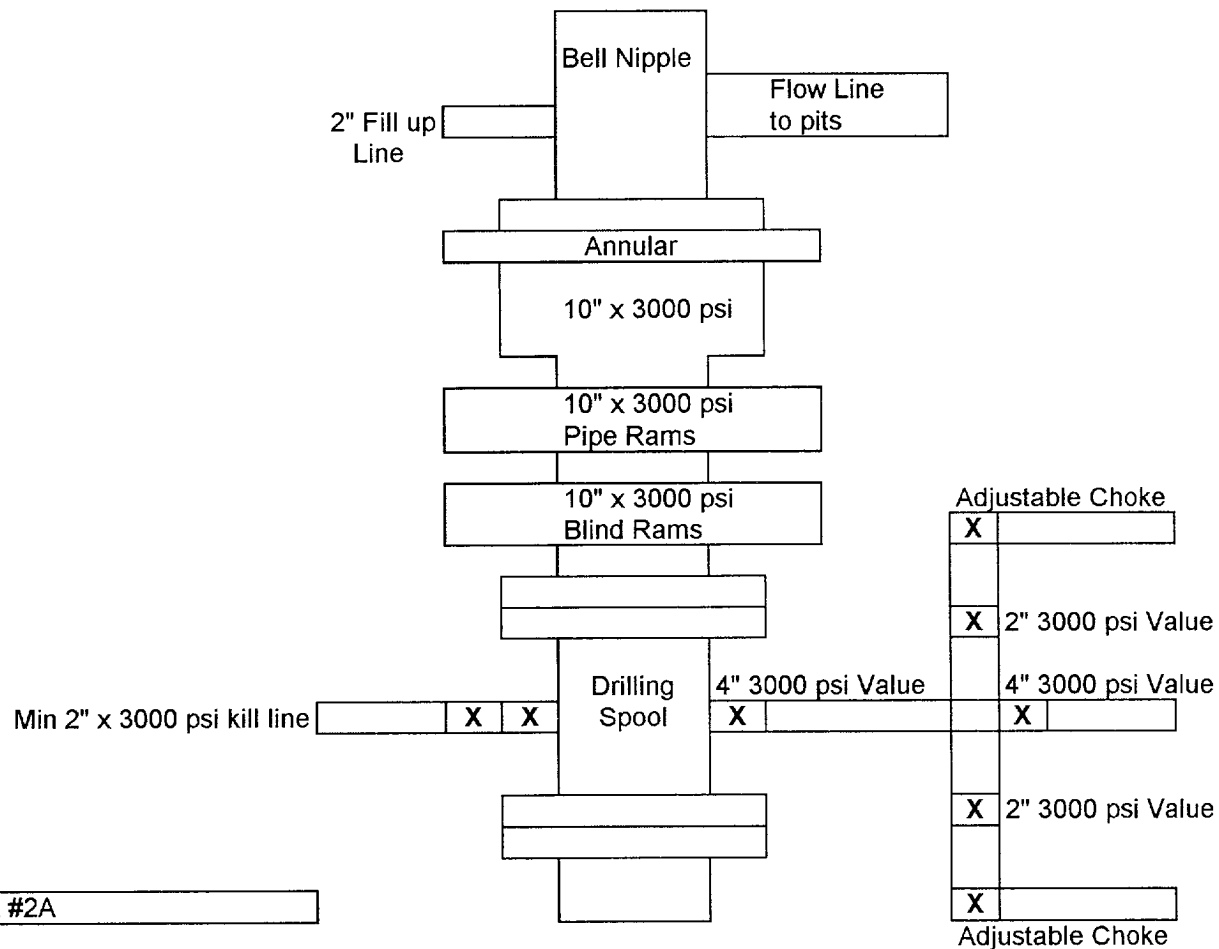


Exhibit #2A

Layla 35 Fee Com #1
1650' FSL & 1241' FEL
Sec. 35 T-23S R-28E
Eddy, County New Mexico