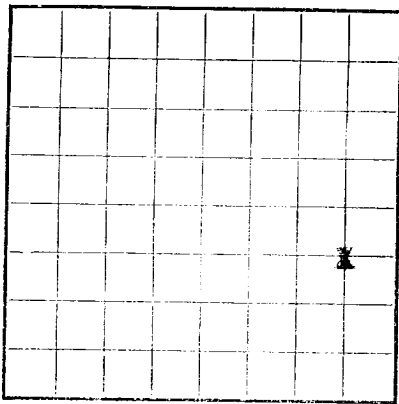


U. S. LAND OFFICE **Las Cruces**
SERIAL NUMBER **070869-A**
LEASE OR PERMIT TO PROSPECT



LOCATE WELL CORRECTLY

UNITED STATES
DEPARTMENT OF THE INTERIOR
GEOLOGICAL SURVEY

LOG OF OIL OR GAS WELL

Company The Texas Company Address Box 1720, Fort Worth, Texas
Lessor or Tract White Federal NCT-1 Field Mason Delaware State New Mexico
Well No. 2 Sec. 26 T26S R.31E Meridian NMPM County Eddy
Location 1830 ft. N of 3 Line and 330 ft. EX of E Line of Sec. 26 Elevation 3120(GR)
(Derrick floor relative to sea level)

The information given herewith is a complete and correct record of the well and all work done thereon so far as can be determined from all available records.

Signed

Date June 28, 1955

Title Asst. Dist. Supt.

The summary on this page is for the condition of the well at above date.

Commenced drilling 5-23-, 19 55 Finished drilling 6-18-, 19 55

OIL OR GAS SANDS OR ZONES

(Denote gas by G)

No. 1, from 4112 to 4138 No. 4, from to
No. 2, from to No. 5, from to
No. 3, from to No. 6, from to
Well drilled with rotary and no water sands tested.

IMPORTANT WATER SANDS

No. 1, from _____ to _____ No. 3, from _____ to _____
No. 2, from _____ to _____ No. 4, from _____ to _____

CASING RECORD

Size casing	Weight per foot	Threads per inch	Make	Amount	Kind of shoe	Cut and pulled from	Perforated	Purpose
	lb						From	To
8-5/8"	24 1/2	8 Rd	Smls	901	Baker			
5 1/2"	17 1/2	8 Rd	Smls	4001	Baker			

MUDDING AND CEMENTING RECORD

Size casing	Where set	Number sacks of cement	Method used	Mud gravity	Amount of mud used
8-5/8"	915	700	Hallib.		
5 1/2"	4112	400	Hallib.		

PLUGS AND ADAPTERS

Heaving plug—Material Length Depth set

Adapters—Material Size

SHOOTING RECORD

Size	Shell used	Explosive used	Quantity	Date	Depth shot	Depth cleaned out

TOOLS USED

Rotary tools were used from 0 feet to 4138 feet, and from _____ feet to _____ feet
Cable tools were used from _____ feet to _____ feet, and from _____ feet to _____ feet

DATES

-----, 19----- Put to producing 6-18- 19 55

The production for the first 24 hours was 162 barrels of fluid of which 78.3% was oil; -----% emulsion; 21.7% water; and -----% sediment. Gravity, °Bé. 41.4

If gas well, cu. ft. per 24 hours Gallons gasoline per 1,000 cu. ft. of gas

Rock pressure, lbs. per sq. in. _____

EMPLOYEES

EMPLOYEES			
H. V. Gray	Driller	E. L. Craig	Driller
W. B. Kimbrell	Driller		Driller

FORMATION RECORD

FROM-	TO-	TOTAL FEET	FORMATION
0	75	75	Caliche, Sand & Gravel
75	452	377	Gravel, Sand & Shale
452	699	247	Red Beds
699	876	177	Shale & Shells
876	915	39	Anhy.
915	1465	550	Anhy, Gyp, Sand & Shale
1465	1990	525	Anhy, Gyp & Shale
1990	2109	119	Anhy & Salt Stringers
2109	2894	785	Anhy & Gyp
2894	3081	187	Anhy, Gyp & Salt Stringers
3081	3373	292	Anhy
3373	3516	143	Salt
3516	3616	100	Anhy
3616	3864	248	Salt
3864	4064	200	Anhy
4064	4095	31	Black Lime
4095	4122	27	Black Lime & Sand
4122	4138	16	Sandy Lime
	4138		Total Depth

FORMATION RECORD--Continued

FROM--	TO--	TOTAL FEET	FORMATION
			Deviation Record
			160'-1°
			320'-1°
			640'-1°
			800'-2°
			900'-1-3/4°
			1050'-2 1/2°
			1210'-2°
			1360'-2 1/2°
			1530'-2-3/4°
			1600'-2 1/2°
			1750'-2°
			1908'-2°
			1961'-1-3/4°
			2100'-2°
			2240'-1-3/4°
			2430'-2-3/4°
			2551'-2 1/2°
			2710'-1-3/4°
			2850'-1°
			2950'-1°
			3080'-1°
			3237'-3/4°
			3390'-1°
			3550'-1°
			3700'-1 1/2°
			3860'-2°
			3990'-2°

HISTORY OF OIL OR GAS WELL

16-43004-2 U. S. GOVERNMENT PRINTING OFFICE

It is of the greatest importance to have a complete history of the well. Please state in detail the dates of redrilling, together with the reasons for the work and its results. If there were any changes made in the casing, state fully, and if any casing was "sidetracked" or left in the well, give its size and location. If the well has been dynamited, give date, size, position, and number of shots. If plugs or bridges were put in to test for water, state kind of material used, position, and results of pumping or bailing.

Well was drilled to a total depth of 4138' and 5 1/2" casing was set at 4112' with 400 sacks cement. Open hole from 4112' to 4138' sand-frac with 2000 gallons gel lease crude with 1 lb of sand per gallon and well swabbed until load oil recovered. Well shut-in for 12 hrs while rotary was moved off.

On test flowed 54 bbls of oil and 15 bbls of water in 8 hours through 2" choke. GOR is 433.