

NM OIL & GAS COMMISSION  
 Drawel D  
 Artesia UNITED STATES  
 DEPARTMENT OF THE INTERIOR  
 GEOLOGICAL SURVEY

RECEIVED BY  
 SUBMIT IN APPLICATION\*  
 (Other instructions on reverse side)  
 DEC 08 1983  
 O. C. D.

Form approved.  
 Budget Bureau No. 42-R1425.

30-015-24712

APPLICATION FOR PERMIT TO DRILL, DEEPEN, OR PLUG BACK

1a. TYPE OF WORK  
 DRILL  DEEPEN  PLUG BACK

b. TYPE OF WELL  
 OIL WELL  GAS WELL  OTHER   
 SINGLE ZONE  MULTIPLE ZONE

2. NAME OF OPERATOR  
 El Paso Natural Gas Company ✓

3. ADDRESS OF OPERATOR  
 18th Floor Wilco Bldg., Midland, TX 79701

4. LOCATION OF WELL (Report location clearly and in accordance with any State requirements.\*)  
 At surface  
 330' FNL & 1700' FWL  
 At proposed prod. zone 5000' - 5200' WTC

14. DISTANCE IN MILES AND DIRECTION FROM NEAREST TOWN OR POST OFFICE\*  
 17 Miles SE Malaga

15. DISTANCE FROM PROPOSED\* LOCATION TO NEAREST PROPERTY OR LEASE LINE, FT. (Also to nearest drlg. unit line, if any) 330

16. NO. OF ACRES IN LEASE 55.8

17. NO. OF ACRES ASSIGNED TO THIS WELL 55.8

18. DISTANCE FROM PROPOSED LOCATION\* TO NEAREST WELL, DRILLING, COMPLETED, OR APPLIED FOR, ON THIS LEASE, FT. None

19. PROPOSED DEPTH 6000

20. ROTARY OR CABLE TOOLS Rotary

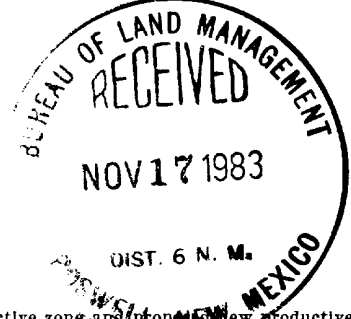
21. ELEVATIONS (Show whether DF, RT, GR, etc.)  
 GR 2862'

22. APPROX. DATE WORK WILL START\*  
 December 5, 1983

23. PROPOSED CASING AND CEMENTING PROGRAM

SIZE OF HOLE	SIZE OF CASING	WEIGHT PER FOOT	SETTING DEPTH	QUANTITY OF CEMENT
17 1/2"	13 3/8	48	360	Circ. to Surface
12 1/4"	9 5/8	36	2900	Circ. to Surface
7 7/8"	4 1/2	10.5# & 9.5#	6000	770 sx Cmt. to 2900'

Blowout preventer will consist of 3000 psi W.P. test double gate preventer equipped with blind and pipe rams with rotating head to be installed after the 9-5/8" casing has been installed.



IN ABOVE SPACE DESCRIBE PROPOSED PROGRAM: If proposal is to deepen or plug back, give data on present productive zone and proposed new productive zone. If proposal is to drill or deepen directionally, give pertinent data on subsurface locations and measured and true vertical depths. Give blowout preventer program, if any.

24. SIGNED Harry Mitchell TITLE Area Drilling Engineer DATE 11-15-83

(This space for Federal or State office use)

PERMIT NO. \_\_\_\_\_ APPROVAL DATE \_\_\_\_\_

APPROVED BY (ORIG. SGD.) ARMANDO A. LOPEZ TITLE Acting District Manager DATE 12-6-83

CONDITIONS OF APPROVAL, IF ANY: \_\_\_\_\_

**APPROVAL SUBJECT TO GENERAL REQUIREMENTS AND SPECIAL STIPULATIONS ATTACHED**  
 See instructions On Reverse Side

Posted APD  
 SD-12/7/83  
 12-9-83

OIL CONSERVATION DIVISION

STATE OF NEW MEXICO  
ENERGY AND MINERALS DEPARTMENT

P. O. BOX 2088  
SANTA FE, NEW MEXICO 87501

Form C-102  
Revised 10-1-78

All distances must be from the outer boundaries of the Section.

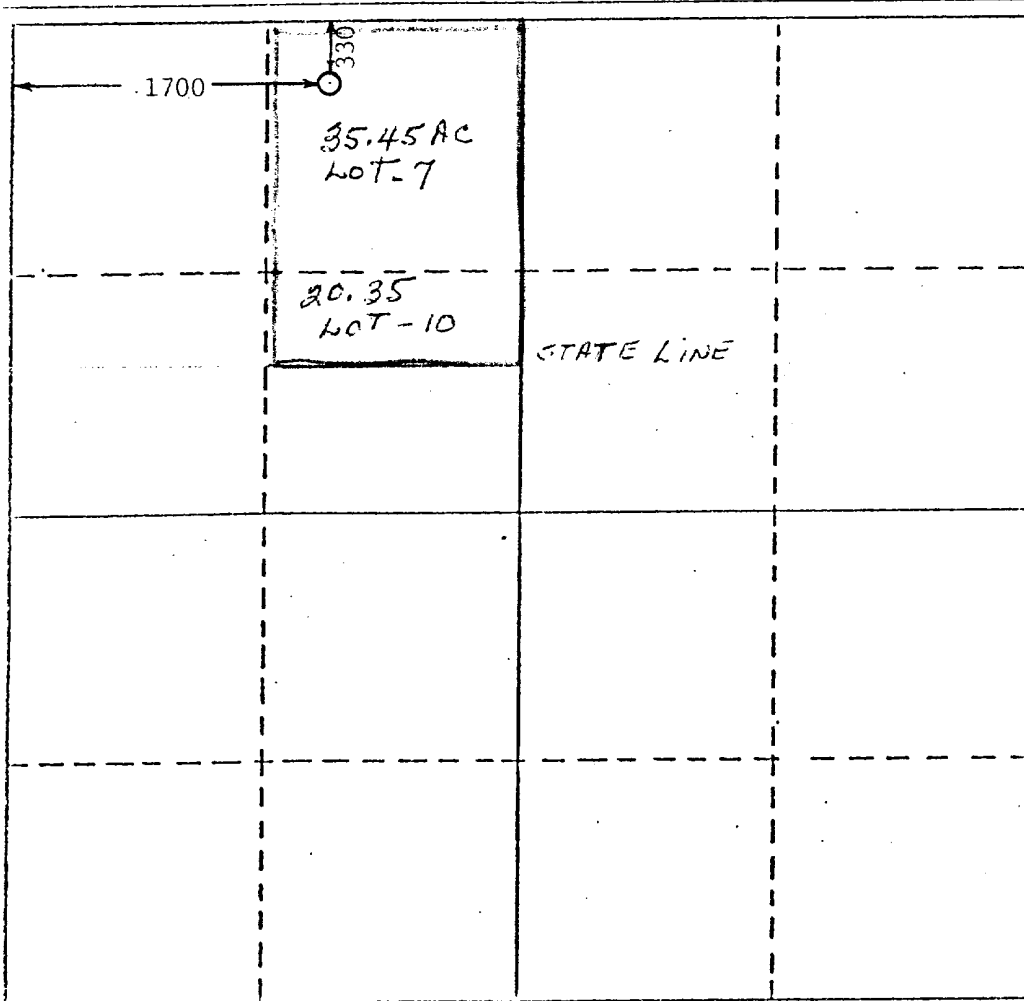
Operator El Paso Natural Gas Company		Lease Brushy Federal		Well No. #1
Unit Letter C	Section 35	Township 26S	Range 29E	County Eddy
Actual Footage Location of Well: 330 feet from the North line and 1700 feet from the West line				
Ground Level Elev. 2862'	Producing Formation Cherry Canyon	Pool Brushy Draw	Dedicated Acreage: 55.80 Acres	

1. Outline the acreage dedicated to the subject well by colored pencil or hachure marks on the plat below.
2. If more than one lease is dedicated to the well, outline each and identify the ownership thereof (both as to working interest and royalty).
3. If more than one lease of different ownership is dedicated to the well, have the interests of all owners been consolidated by communitization, unitization, force-pooling, etc?

Yes  No If answer is "yes," type of consolidation \_\_\_\_\_

If answer is "no," list the owners and tract descriptions which have actually been consolidated. (Use reverse side of this form if necessary.) \_\_\_\_\_

No allowable will be assigned to the well until all interests have been consolidated (by communitization, unitization, forced-pooling, or otherwise) or until a non-standard unit, eliminating such interests, has been approved by the Division.



CERTIFICATION

I hereby certify that the information contained herein is true and complete to the best of my knowledge and belief.

Marlan G. Deaton

Name  
Chief Division Field Engr.

Position  
El Paso Natural Gas Co.

Company  
November 3, 1983

Date

I hereby certify that the well location shown on this plat was plotted from field notes of actual surveys made by me or under my supervision, and that the same is true and correct to the best of my knowledge and belief.

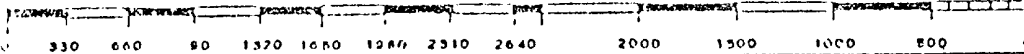
Date Surveyed  
November 3, 1983

Registered Professional Engineer  
and/or Land Surveyor

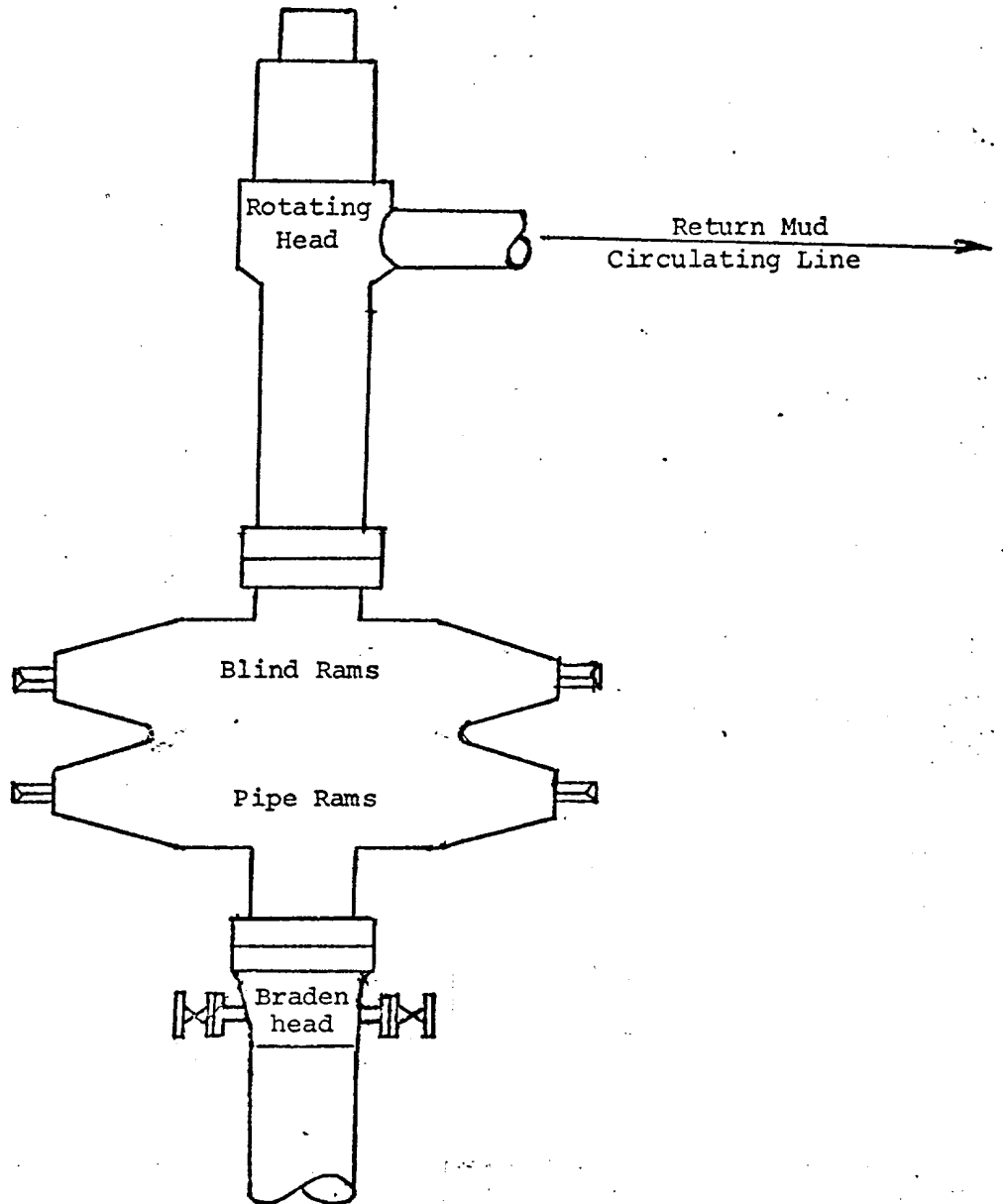
*Marlan G. Deaton*

Certificate No.

5039



BOP EXHIBIT



WELLHEAD BOP STACK

Test to 3000 psi Working Pressure

# OPERATION PLAN

## Brushy Federal #1

### I. Location

330' FNL and 1700' FWL, Sec. 35, T26S, R29E.

Field Brushy Draw                      Elevation 2862' GL

### II. Geology

- A. Formation Tops:                      Lamar Lime 2900 ft.  
   Bell Canyon 2950 ft.  
   Cherry Canyon 3840 ft.  
   Brushy Canyon 5250 ft.
- B. Logging Program:                      Compensated Density-Neutron Dual  
   Laterlog
- C. Coring Program:                      None

### III. Drilling

Mud Program:                              Mud from surface to total depth, 6000 ft.

### IV. Material

#### A. Casing Program:

<u>Hole Size</u>	<u>Depth</u>	<u>Csg. Size</u>	<u>Wt. &amp; Gr.</u>
17 1/2	360	13 3/8	48# H-40
12 1/4	2900	9 5/8	36# K-55
7 7/8	6000	4 1/2	10.5# & 9.5# K-55

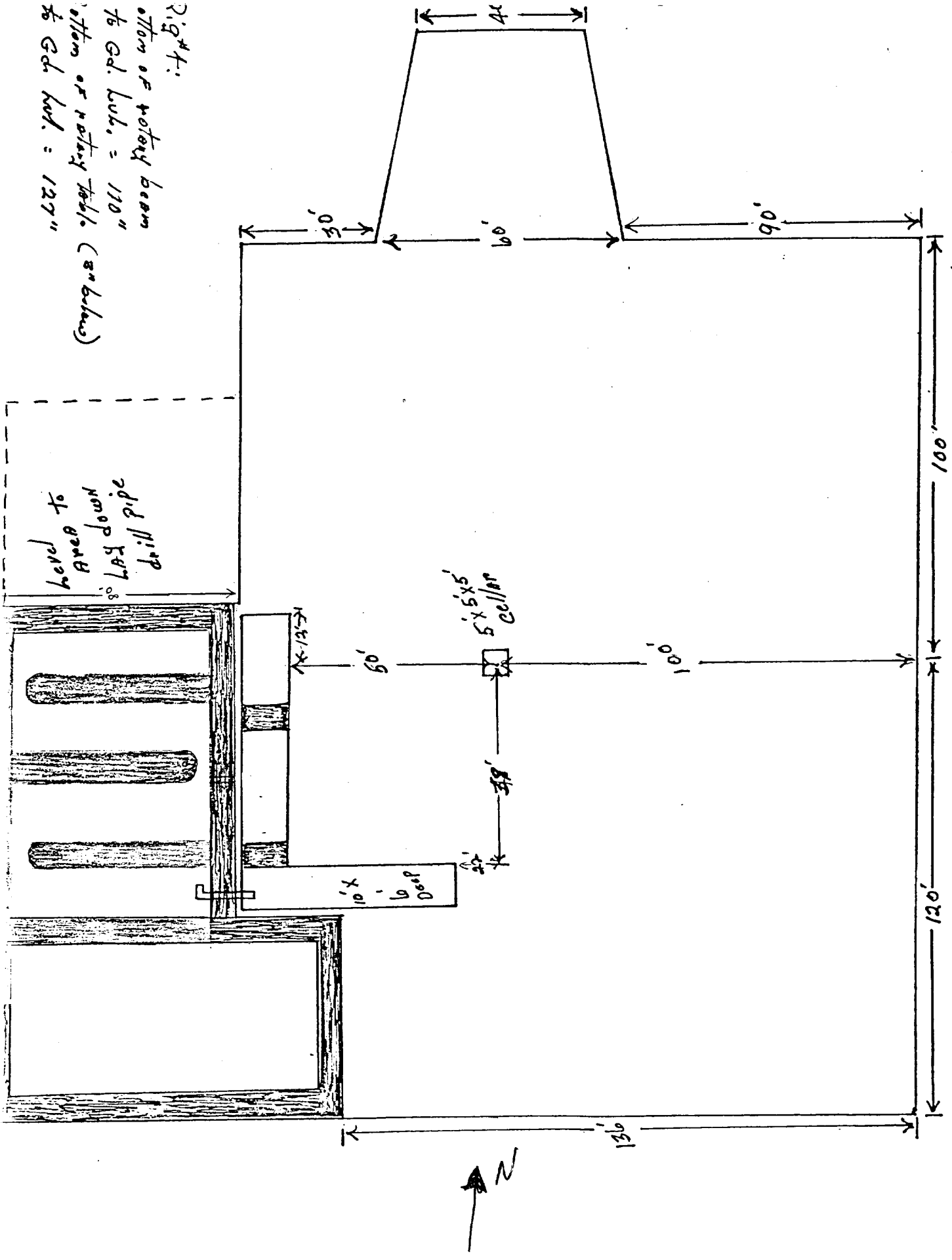
#### B. Floating Equipment:

13 3/8" Surface Casing	Insert-Texas Pattern Shoe	4 Centralizers
9 5/8" Intermediate	Float Collar-Guide Shoe	6 Centralizers
4 1/2" Production	Float Collar-Guide Shoe	10 Centralizers

C. Tubing:                                      5500' of 2 3/8" 4.7# J-55

D. Well head Equipment:                      Casinghead 13 3/8" x 9 5/8" 2000 psi W. P.  
   Casinghead 9 5/8" x 4 1/2" 2000 psi W. P.  
   Tubinghead 4 1/2" x 2 3/8" 2000 psi W. P.

Landis Drilling Co.  
 Std. Location Plot.



2' x 4' :  
 offm of rotary beam  
 to Ed. lub. = 110"  
 offm of rotary tabl. (5' x 6' beam)  
 to Ed. lub. = 127"

Scale = 1" = 30'

