

UNITED STATES  
DEPARTMENT OF THE INTERIOR  
BUREAU OF LAND MANAGEMENT

APPLICATION FOR PERMIT TO DRILL, DEEPEN, OR PLUG BACK

1a. TYPE OF WORK

DRILL ☒

DEEPEN ☐

PLUG BACK ☐

b. TYPE OF WELL

OIL  
WELL ☒

GAS  
WELL ☐

OTHER

SINGLE  
ZONE ☐

MULTIPLE  
ZONE ☐

2. NAME OF OPERATOR

Charles B. Gillespie, Jr.

3. ADDRESS OF OPERATOR

Post Office Box 8, Midland, Texas 79702

4. LOCATION OF WELL (Report location clearly and in accordance with any State requirements.)\*

At surface  
810' FSL & 810' FEL

At proposed prod. zone  
Same

14. DISTANCE IN MILES AND DIRECTION FROM NEAREST TOWN OR POST OFFICE\*

Approximately 17 miles East of Malaga, New Mexico

15. DISTANCE FROM PROPOSED\*

LOCATION TO NEAREST  
PROPERTY OR LEASE LINE, FT. 810'

(Also to nearest drlg. unit line, if any)

18. DISTANCE FROM PROPOSED LOCATION\*

TO NEAREST WELL, DRILLING, COMPLETED,  
OR APPLIED FOR, ON THIS LEASE, FT. None

16. NO. OF ACRES IN LEASE

160

17. NO. OF ACRES ASSIGNED  
TO THIS WELL

40

19. PROPOSED DEPTH

7200'

20. ROTARY OR CABLE TOOLS

Rotary

21. ELEVATIONS (Show whether DF, RT, GR, etc.)

3472.7'GR

22. APPROX. DATE WORK WILL START\*

as soon as possible

23.

PROPOSED CASING AND CEMENTING PROGRAM

SIZE OF HOLE	SIZE OF CASING	WEIGHT PER FOOT	SETTING DEPTH	QUANTITY OF CEMENT
17 1/2"	13 3/8"	54.50#	600'	See Exhibit F and G <b>CIRCULATE</b>
11"	8 5/8"	24.32#	4325'	
7 7/8"	5 1/2"	17#	7200'	

Mud Program: See Exhibit G.

B.O.P. Program: Series 1500 B.O.P., Installed at offset. See Exhibit E.

Gas Not Dedicated

IN AVAILABLE SPACE DESCRIBE PROPOSED PROGRAM: If proposal is to deepen or plug back, give data on present productive zone and proposed new productive zone. If proposal is to drill or deepen directionally, give pertinent data on subsurface locations and measured and true vertical depths. Give blowout preventer program, if any.

24.

SIGNED

*David W. Hartup*

TITLE Production Manager

DATE 11-21-88

(This space for Federal or State office use)

PERMIT NO.

APPROVAL DATE

APPROVED BY

*David W. Hartup*

TITLE

DATE

12-22-88

CONDITIONS WITH SUBJECT TO:

GENERAL REQUIREMENTS AND

SPECIAL STIPULATIONS

ATTACHED

\*See Instructions On Reverse Side

Title 18 U.S.C. Section 1001, makes it a crime for any person knowingly and willfully to make to any department or agency of the United States any false, fictitious or fraudulent statements or representations as to any matter within its jurisdiction.

NEW MEXICO OIL CONSERVATION COMMISSION  
WELL LOCATION AND ACREAGE DEDICATION PLAT

Form C-102  
Supersedes C-128  
Effective 1-1-65

All distances must be from the outer boundaries of the Section.

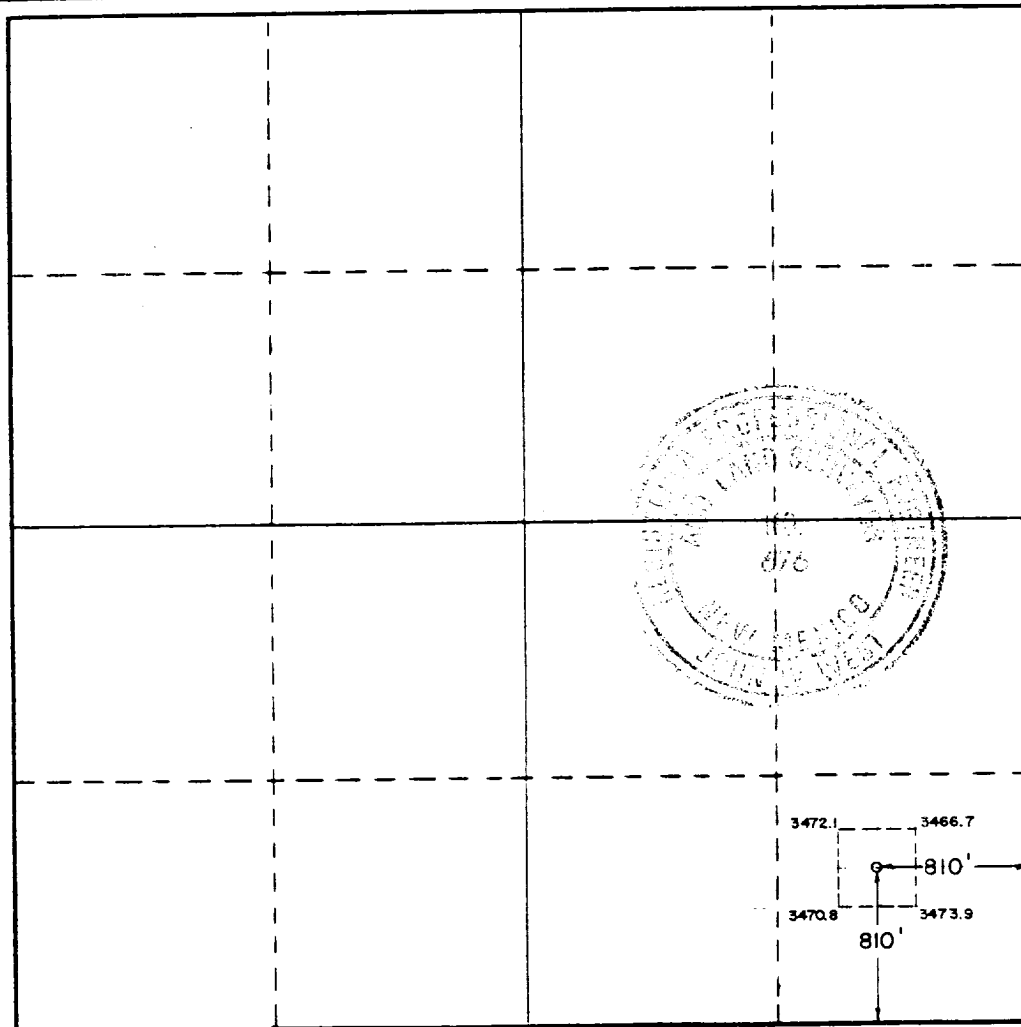
Operator Charles B. Gillespie, Jr.			Lease Poker Lake Unit		Well No. X 70
Unit Letter P	Section 28	Township 24 South	Range 31 East	County Eddy	
Actual Footage Location of Well: 810 feet from the south line and 810 feet from the east line					
Ground Level Elev. 3472.7	Producing Formation Canyon	Pool Wildcat	Dedicated Acreage: 40 Acres		

1. Outline the acreage dedicated to the subject well by colored pencil or hachure marks on the plat below.
2. If more than one lease is dedicated to the well, outline each and identify the ownership thereof (both as to working interest and royalty).
3. If more than one lease of different ownership is dedicated to the well, have the interests of all owners been consolidated by communitization, unitization, force-pooling, etc?

☐ Yes ☐ No If answer is "yes," type of consolidation \_\_\_\_\_

If answer is "no," list the owners and tract descriptions which have actually been consolidated. (Use reverse side of this form if necessary.) \_\_\_\_\_

No allowable will be assigned to the well until all interests have been consolidated (by communitization, unitization, forced-pooling, or otherwise) or until a non-standard unit, eliminating such interests, has been approved by the Commission.



CERTIFICATION

I hereby certify that the information contained herein is true and complete to the best of my knowledge and belief.

Name  
David W. Hastings  
Position  
Production Manager  
Company  
Charles B. Gillespie, Jr.  
Date  
11-21-88

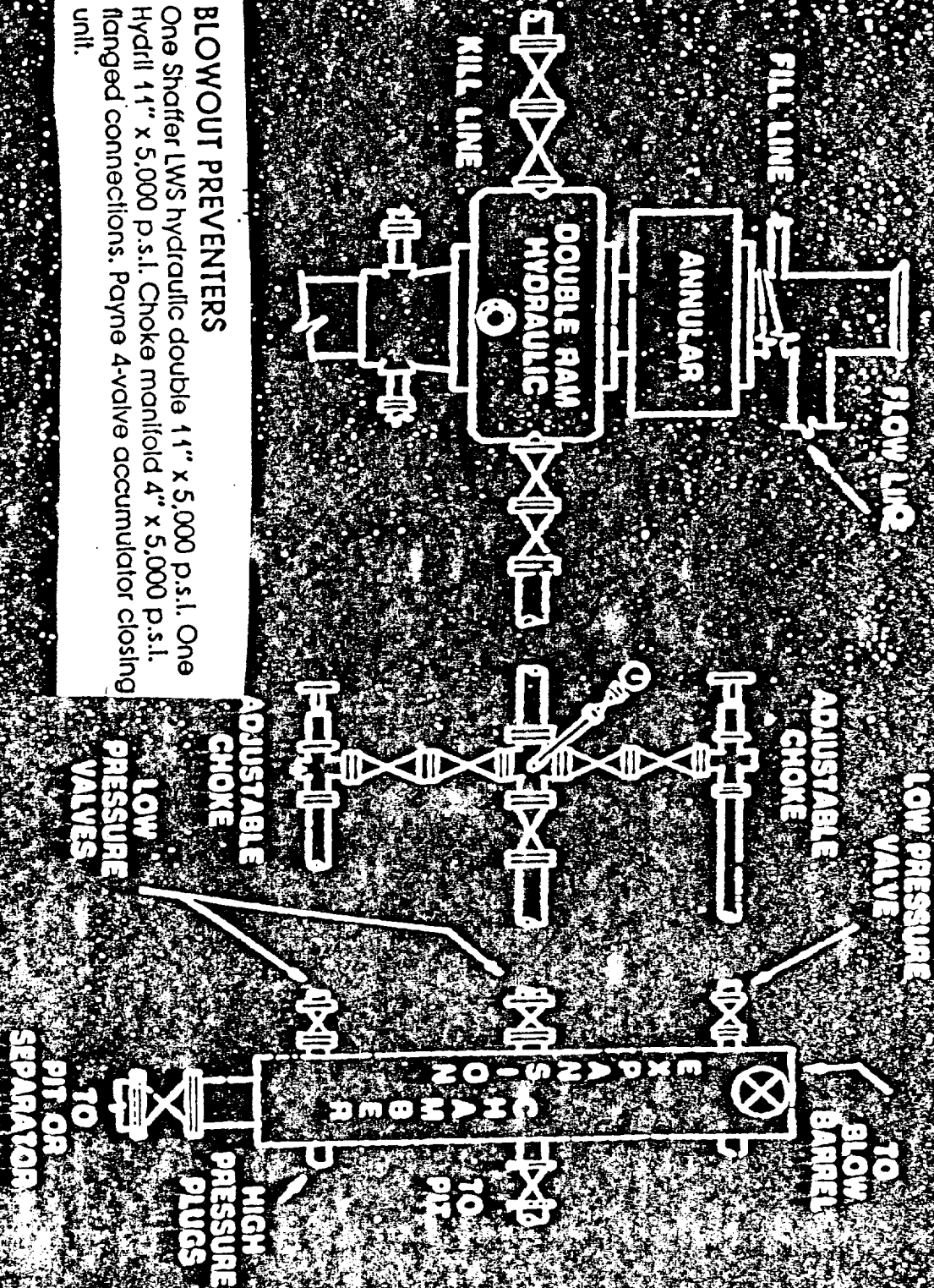
I hereby certify that the well location shown on this plat was plotted from field notes of actual surveys made by me or under my supervision, and that the same is true and correct to the best of my knowledge and belief.

Date Surveyed  
November 16, 1988

Registered Professional Engineer  
and/or Land Surveyor

Certificate No. JOHN W. WEST, 676  
RONALD J. EIDSON, 3239

BLOW OUT PREVENTER  
 EXHI "E"  
 Charles B. Gillespie, Jr.  
 Poker Lake Unit Well #71  
 810' FSL & 810' FEL  
 Sec. 28, T-24S, R-31E  
 Eddy County, New Mexico



Standard Blowout Preventer Stack

APPLICATION FOR DRILLING

Charles B. Gillespie, Jr.

Poker Lake Unit Well No. 71

810' FSL and 810' FEL

Section 28, T-24-S, R-31-E

Eddy County, New Mexico

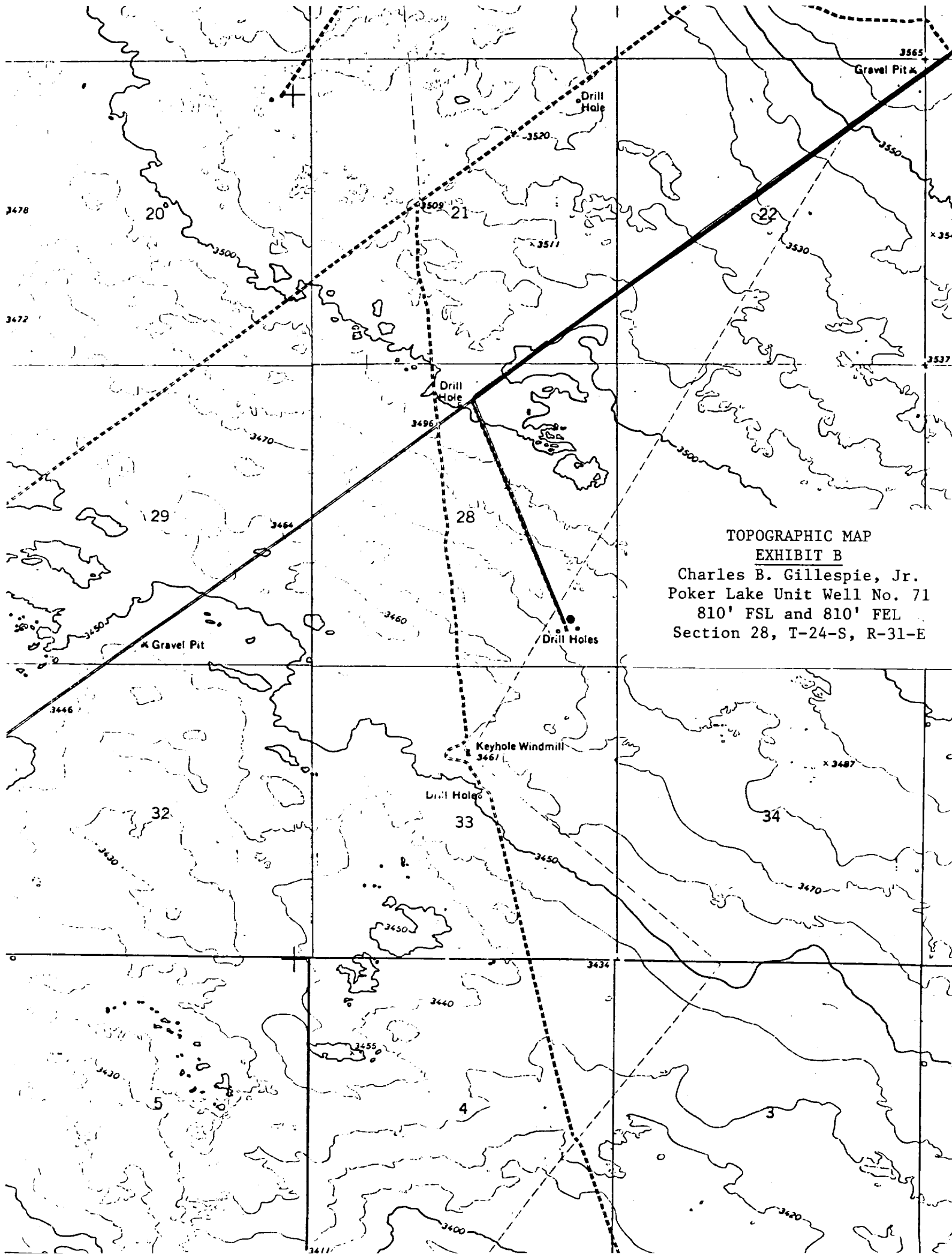
In conjunction with Form 9-331C, Application for Permit to Drill subject well, Charles B. Gillespie, Jr. submits the following nine items of pertinent information in accordance with USGS requirements:

1. The geologic surface formation is Quaternary.
2. The estimated tops of geologic markers are as follows:

Rustler	585'
Salado	975'
Lamar	4315'
Bell Canyon	4375'
Cherry Canyon	5270'
Brushy Canyon	6550'
3. The estimated depths at which anticipated water, oil or gas formations are expected to be encountered:

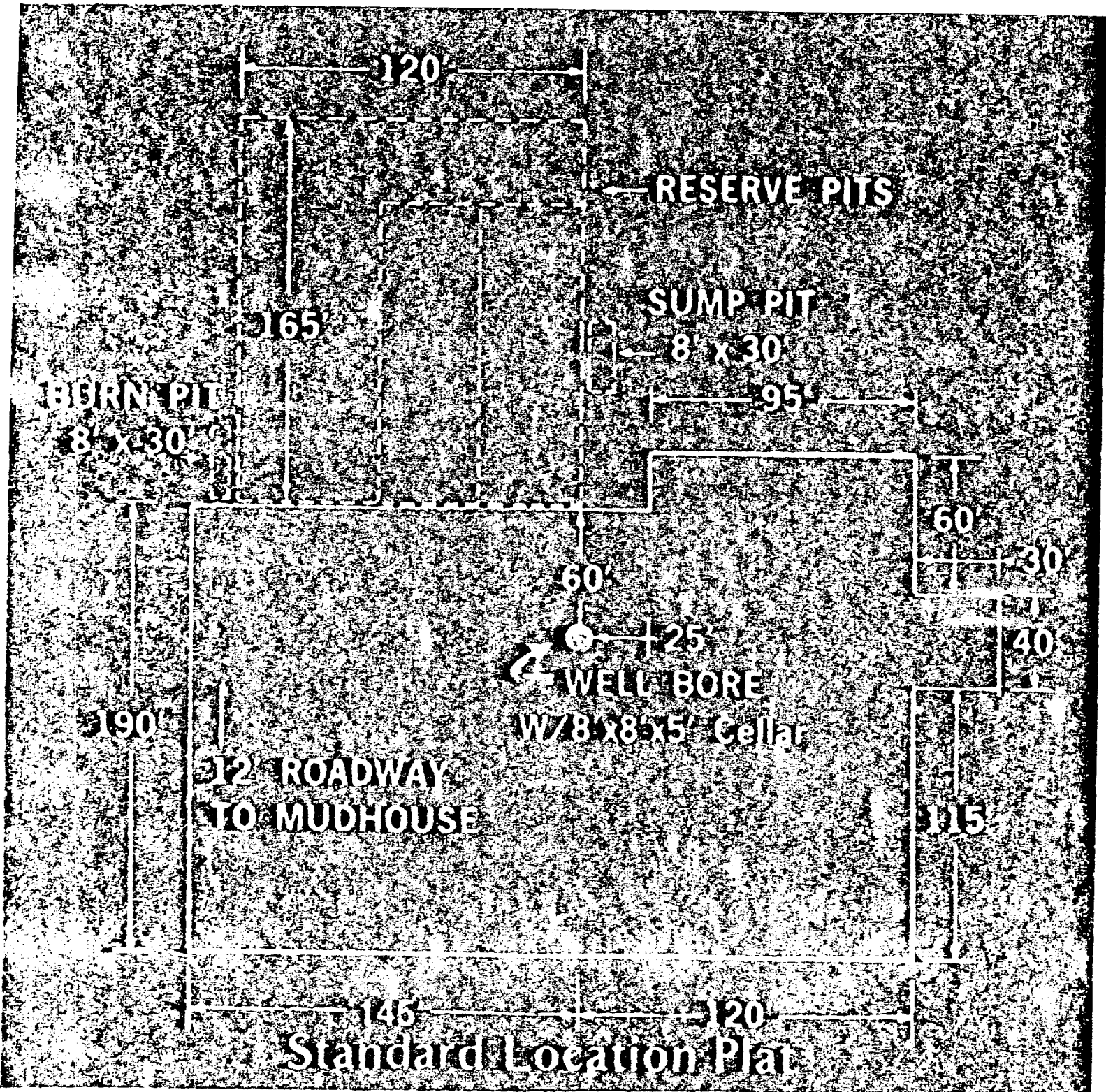
Water:	Approximately 200'
Oil or Gas:	Bell Canyon: Approx. 4375' to 5270'
	Cherry Canyon: Approx. 5270' to 6550'
	Brushy Canyon: Approx. 6550' to 7200'
4. Proposed Casing Program: See Form 9-331C and Exhibit F.
5. Pressure Control Equipment: See Form 9-331C and Exhibit E.
6. Mud Program: See Exhibit G.
7. Testing, Logging, and Coring Programs:

Drill stem tests (all DST's to be justified by a valid show of oil):	
Bell Canyon	4375'
Cherry Canyon	5270'
Brushy Canyon	6550'
Logging:	
Mud logging unit from intermediate casing point to TD	
Electric Log Program:	
Compensated Density Compensated Neutron Log	
Dual Laterolog with MSFL	
8. No abnormal pressures or temperatures are anticipated.
9. Anticipated starting date: As soon as possible.



TOPOGRAPHIC MAP  
EXHIBIT B  
Charles B. Gillespie, Jr.  
Poker Lake Unit Well No. 71  
810' FSL and 810' FEL  
Section 28, T-24-S, R-31-E

PAD LA T  
EXHIBIT "D"  
Charles B. Gillespie, Jr.  
Poker Lake Unit Well #71  
810 FSL & 810 FEL  
Sec. 28, T-24S, R-31E  
Eddy County, New Mexico



Charles B. Gillespie, Jr.

SUMMARY

DRILLING, DRILL STEM TESTS, CASING, AND CEMENTING PROGRAM

1. Drill 17-1/2" hole to 600'±. Will be in the Rustler at this depth.
2. Cement 13-3/8", 54.50# K-55 casing with 650 sx. Class 'C' Premium Plus, containing 2% CaCl<sub>2</sub>, preceded with 1600 gallons Flocheck 21. Run Texas Pattern Guide Shoe with an insert float valve in top of shoe joint. Use plug to displace cement.
3. Release pressure, nipple up, and install BOP's. Test casing to 600 psi after 18 hours and drill out cement.
4. Drill 11" hole to 4325'±. Will be in the Lamar at this depth.
5. Cement 8-5/8", 24# J-55 and 32# J-55 casing with 900 sx. Howco Lite containing 12#/sk salt and 1/4#/sk Flocele, and tail in with 200 sx. Class 'C' containing 1/4#/sk Flocele. Ran guide shoe and insert float on bottom joint, and 3-6 centralizers. Use plug to displace cement.
6. Release pressure, nipple up, and install BOP's. Test casing to 1500 psi for 30 minutes after WOC 18 hours and drill out cement after 24 hours.
7. Drill 7-7/8" hole to TD at 7200'±. A fresh water, cut brine mud system will be used. Pit levelers and flowline sensors will be utilized on the pits. Drill stem tests are anticipated in the following zones:  
Bell Canyon-4375'; Cherry Canyon-5270'; Brushy Canyon-6550'.  
DST flow periods and shut-in time will be determined on location.  
A mud logging unit will be on location at 4325' to assist in evaluating samples and shows for exact drill stem test intervals. Run Compensated Density-Compensated Neutron-Gamma Ray Log, Dual LateroLog with MSFL.

EXHIBIT F

Charles B. Gillespie, Jr.  
Poker Lake Unit Well No. 71  
810' FSL and 810' FEL  
Section 28, T-24-S, R-31-E

8. Run 5½", 15.50# J-55 and 17# J-55 casing and cement with 600 sx Class 'C' cement containing 2% gel, .4% Halid 4, preceded by 1000 gallons Flocheck 21. Use Guide Shoe and Float Collar, and 12-15 centralizers where necessary. Use rubber plug, displace cement with clean, fresh water treated with 2% KCL and non-emulsifying agent.
9. Perforations, acid job, and additional stimulation to be determined after completion.

EXHIBIT F

Charles B. Gillespie, Jr.  
Poker Lake Unit Well No. 71  
810' FSL and 810' FEL  
Section 28, T-24-S, R-31-E



CEMENT PROGRAM (Also, See Exhibit G)

13-3/8" Casing: 650 sx. Class 'C' Premium Plus containing 2%  $\text{CaCl}_2$ , preceded with 1600 gallons Flocheck 21.

8-5/8" Casing: 900 sx. Howco Lite containing 12#/sk salt and 1#/sk Flocele and tail in with 200 sx. Class 'C' containing 1#/sk Flocele.

5-1/2" Casing: 600 sx. Class 'C' containing 2% gel, 4% Halid 4.

EXHIBIT F

Charles B. Gillespie, Jr.  
Poker Lake Unit #71  
810' FSL and 810' FEL  
Section 28, T-24-S, R-31-E  
Eddy County, New Mexico

SUGGESTED DRILLING FLUID PROGRAM

Surface: 600' of 13-3/8"

Spud with fresh water gel to which lime is added to a 36-40 vis. Paper can be added for seepage.

Intermediate: 4325' of 8-5/8"

Drill out below surface with cut brine adding paper for seepage. This type of drilling fluid should be sufficient to drill to 4325'.

Production: 7200' of 5 1/2"

Drill out below intermediate with cut brine/starch, adding Zeogel (salt gel) for viscosity. Mud weight and viscosity may be altered as hole conditions dictate. This type of drilling fluid should be sufficient to drill, test, or log to 7200'.

EXHIBIT G

Charles B. Gillespie, Jr.  
Poker Lake Unit #71  
810' F3L and 810' FEL  
Section 28, T-24-S, R-31-E  
Eddy County, New Mexico