

UNITED STATES  
DEPARTMENT OF THE INTERIOR  
BUREAU OF LAND MANAGEMENT

APPLICATION FOR PERMIT TO DRILL OR DEEPEN

1a. TYPE OF WORK  
 DRILL  DEEPEN

b. TYPE OF WELL  
 OIL WELL  GAS WELL  OTHER

2. NAME OF OPERATOR  
 Stephens & Johnson Operating Co.

3. ADDRESS AND TELEPHONE NO.  
 P. O. Box 2249, Wichita Falls, Texas 76307

4. LOCATION OF WELL (Report location clearly and in accordance with any State requirements.)  
 At surface: 1650' FSL, 330' FEL (Unit Letter I)  
 At proposed prod. zone: 1650' FSL, 330' FEL (Unit Letter I)

14. DISTANCE IN MILES AND DIRECTION FROM NEAREST TOWN OR POST OFFICE\*  
 16 miles SSE from Malaga, New Mexico

15. DISTANCE FROM PROPOSED\* LOCATION TO NEAREST PROPERTY OR LEASE LINE, FT. (Also to nearest drlg. unit line, if any) 330'

16. NO. OF ACRES IN LEASE 400

17. NO. OF ACRES ASSIGNED TO THIS WELL 40

18. DISTANCE FROM PROPOSED\* LOCATION TO NEAREST WELL, DRILLING, COMPLETED, OR APPLIED FOR, ON THIS LEASE, FT. 660'

19. PROPOSED DEPTH 5250

20. ROTARY OR CABLE TOOLS Rotary Post 3-3-08

21. ELEVATIONS (Show whether DF, RT, GR, etc.) 2897' GR

22. APPROX. DATE WORK WILL START\* February 15, 2000

5. LEASE DESIGNATION AND SERIAL NO.  
 NM - 22634

6. IF INDIAN, ALLOTTED OR TRIBE NAME

7. UNIT AGREEMENT NAME

8. FARMOR LEASE NAME, WELL NO. #11  
 Mobil "22" Federal No.

9. API WELL NO.  
 30-015-30987

10. FIELD AND POOL, OR WILDCAT  
 Brushy Draw, Delaware

11. SEC. T. R. M., OR BLK. AND SURVEY OR AREA  
 Sec. 22, T26S, R29E

12. COUNTY OR PARISH Eddy  
 13. STATE NM

23. PROPOSED CASING AND CEMENTING PROGRAM

SIZE OF HOLE	GRADE, SIZE OF CASING	WEIGHT PER FOOT	SETTING DEPTH	QUANTITY OF CEMENT
12 1/4"	8 5/8" J-55	24	400'	Circulate to surface
7 7/8"	5 1/2" J-55	15.5	5250'	Sufficient to fill base of well

The operator proposes to drill to a depth sufficient to test the Williamson Sand for oil or gas. If productive 5 1/2" casing will be cemented at T.D. If non-productive the well will be plugged and abandoned in a manner consistent with federal regulations. Specific programs are outlined in the following attachments.

- Drilling Program
- Surface Use and Operating Plan
- Exhibit No. 1 - Blowout Preventer Equip.
- Exhibit No. 2 - Location and Elevation Plat.
- Exhibit No. 3 - Planned Access Roads.
- Exhibit No. 4 - One Mile Radius Map.
- Exhibit No. 5 - Production Facilities Layout.
- Exhibit No. 6 - Drilling Rig Layout.

APPROVAL SUBJECT:  
 GENERAL REQUIREMENTS  
 SPECIAL STIPULATIONS  
 ATTACHED

IN ABOVE SPACE DESCRIBE PROPOSED PROGRAM: If proposal is to deepen, give data on present productive zone and proposed new productive zone. If proposal is to drill or deepen directionally, give pertinent data on subsurface locations and measured and true vertical depths. Give blowout preventer program, if any.

SIGNED Will. M. Knicard TITLE Petroleum Engineer DATE January 24, 2000

(This space for Federal or State office use)

PERMIT NO. \_\_\_\_\_ APPROVAL DATE \_\_\_\_\_

Application approval does not warrant or certify that the applicant holds legal or equitable title to those rights in the subject lease which would entitle the applicant to conduct operations thereon.  
 CONDITIONS OF APPROVAL, IF ANY:

APPROVED BY Earl Smith TITLE Assistant Field Manager, Lands And Minerals DATE \_\_\_\_\_

\*See Instructions On Reverse Side

District I  
 PO Box 1988, Hobbs, NM 88241-1988  
 District II  
 PO Drawer DD, Artesia, NM 88211-0719  
 District III  
 1010 Rio Bravo Rd., Aztec, NM 87410  
 District IV  
 PO Box 2088, Santa Fe, NM 87504-2088

State of New Mexico  
 Energy, Minerals & Natural Resources Department

OIL CONSERVATION DIVISION  
 PO Box 2088  
 Santa Fe, NM 87504-2088

Form C-102  
 Revised February 10, 1994  
 Instructions on back  
 Submit to Appropriate District Office  
 State Lease - 4 Copies  
 Fee Lease - 3 Copies

AMENDED REPORT

WELL LOCATION AND ACREAGE DEDICATION PLAT

API Number		Pool Code		Pool Name	
		8080		Brushy Draw, Delaware	
Property Code		Property Name			Well Number
24522		Mobil Federal "22"			11
OGRID No.		Operator Name			Elevation
019958		Stephens & Johnson Operating Co.			2896.53

10 Surface Location

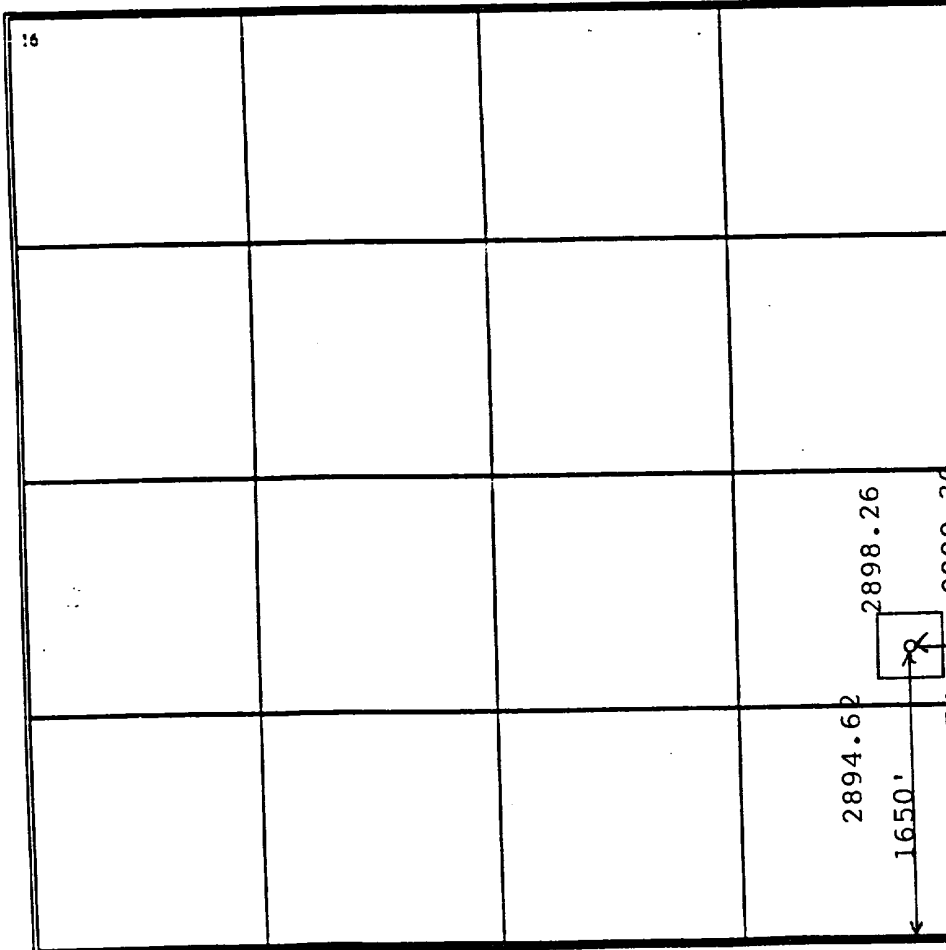
UL or lot no.	Section	Township	Range	Lot Ida	Feet from the	North/South line	Feet from the	East/West line	County
I	22	26 S	29 E		1650	South	330	East	Eddy

11 Bottom Hole Location If Different From Surface

UL or lot no.	Section	Township	Range	Lot Ida	Feet from the	North/South line	Feet from the	East/West line	County

Dedicated Acres		Joint or Infill		Consolidation Code		Order No.			
40		Y							

NO ALLOWABLE WILL BE ASSIGNED TO THIS COMPLETION UNTIL ALL INTERESTS HAVE BEEN CONSOLIDATED OR A NON-STANDARD UNIT HAS BEEN APPROVED BY THE DIVISION



17 OPERATOR CERTIFICATION  
 I hereby certify that the information contained herein is true and complete to the best of my knowledge and belief.

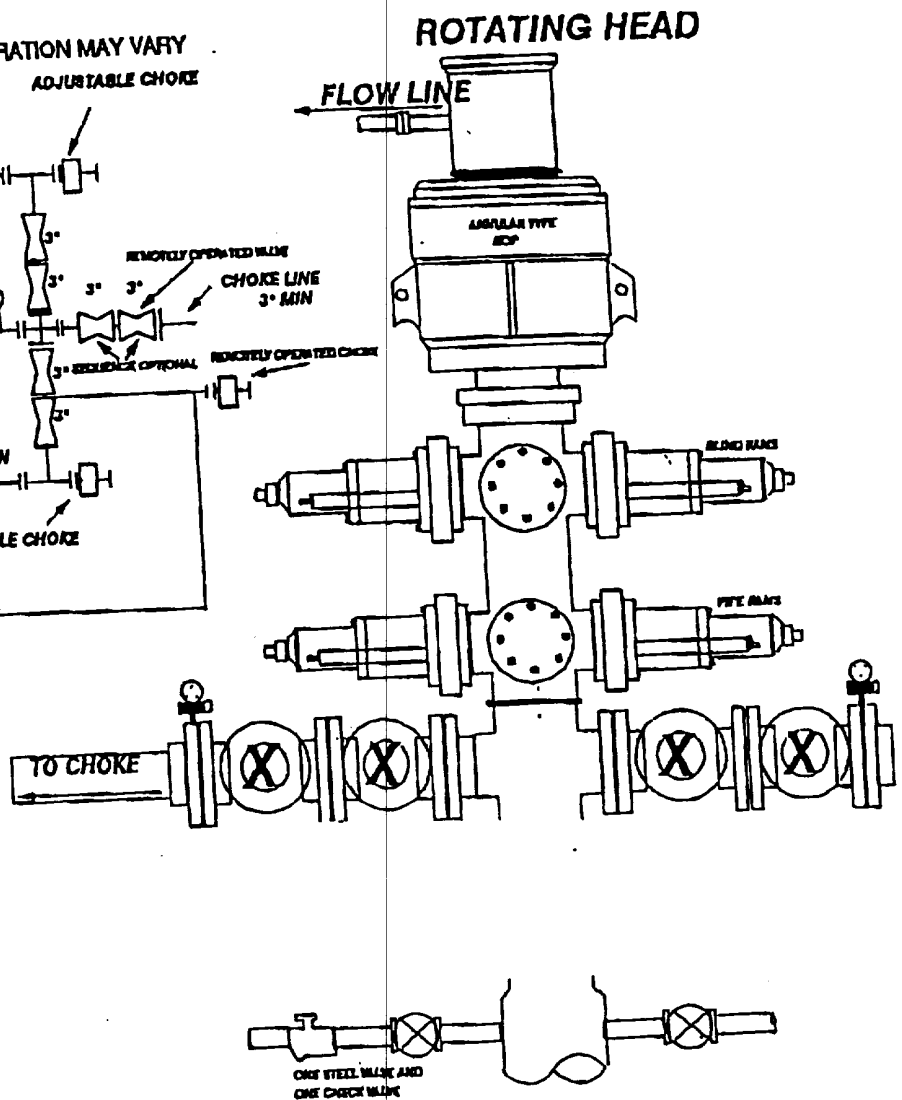
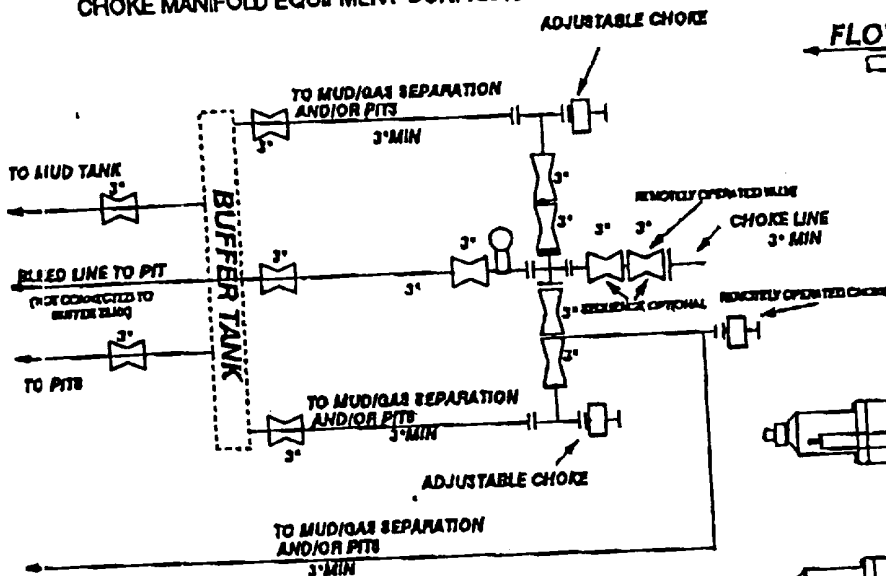
*William M. Kincaid*  
 Signature  
 William M. Kincaid  
 Printed Name  
 Petroleum Engineer  
 Title  
 January 24, 2000  
 Date

18 SURVEYOR CERTIFICATION  
 I hereby certify that the well location shown on this plat was plotted from field notes of actual surveys made by me or under my supervision, and that the same is true and correct to the best of my belief.

330  
 Date of Survey  
 F. R. Patton  
 Signature and Seal of Professional Surveyor  
  
 Certificate Number 8112

# 3000# WP BOPE WITH 3000# WP ANNULAR

CHOKES MANIFOLD EQUIPMENT-CONFIGURATION MAY VARY



## THE FOLLOWING CONSTITUTE MINIMUM BLOWOUT PREVENTER REQUIREMENTS:

- A. Opening between the ram to be flanged, studded, or clamped.
- B. All connections from operating manifolds to preventers to be all steel hose or tube a minimum of one inch diameter.
- C. The available closing pressure shall be at least 15% in excess of that required with sufficient volume to operate (close, open, and re-close) the preventors.
- D. ALL connections to and from preventer to have a pressure rating equivalent to that of the BOPs.
- E. Manual controls to be installed before drilling cement plug.
- F. Kelly cock to be installed on kelly.
- G. Inside blowout preventer to be available on rig floor.
- H. Dual operating controls: one located by drillers position and the other located a safe distance from the rig floor.
- I. All chokes will be adjustable.

EXHIBIT NO. 1

## DRILLING PROGRAM

Attached to Form 3160-3  
Stephens & Johnson Operating Co.  
Mobil "22" Federal Well No. 11  
1650' FSL, 330' FEL  
Unit Letter I, Sec. 22, T26S, R29E  
Eddy County, New Mexico

1. Geologic Surface Formation:

Sandy Alluvium

2. Estimated Tops of Important Geologic Markers:

Rustler Anhydrite	360'
Base Salt	2750'
Delaware Lime	2950'
Delaware Sand	2980'
Cherry Canyon	3789'
Williamson Sand	4959'

3. Estimated Depths of Anticipated Fresh Water, Oil or Gas:

Cherry Canyon	3789'	Oil
Williamson Sand	4959'	Oil

No other formations are expected to give up oil or gas. The surface fresh water sands will be protected by setting 8 5/8" csg at 400' and circulating cement back to surface. 5 1/2" production csg will be run to TD. Sufficient cement will be used to protect all zones from TD back up to the base of the salt.

4. Casing Program:

<u>Hole Size</u>	<u>Interval</u>	<u>OD csg</u>	<u>Weight, Grade, Jr. Cond. Type</u>
12 1/4"	0-400'	8 5/8"	24#, J-55, ST&C, new R-3
7 7/8"	400-5250'	5 1/2"	15.50#, J-55, ST&C, new R-3

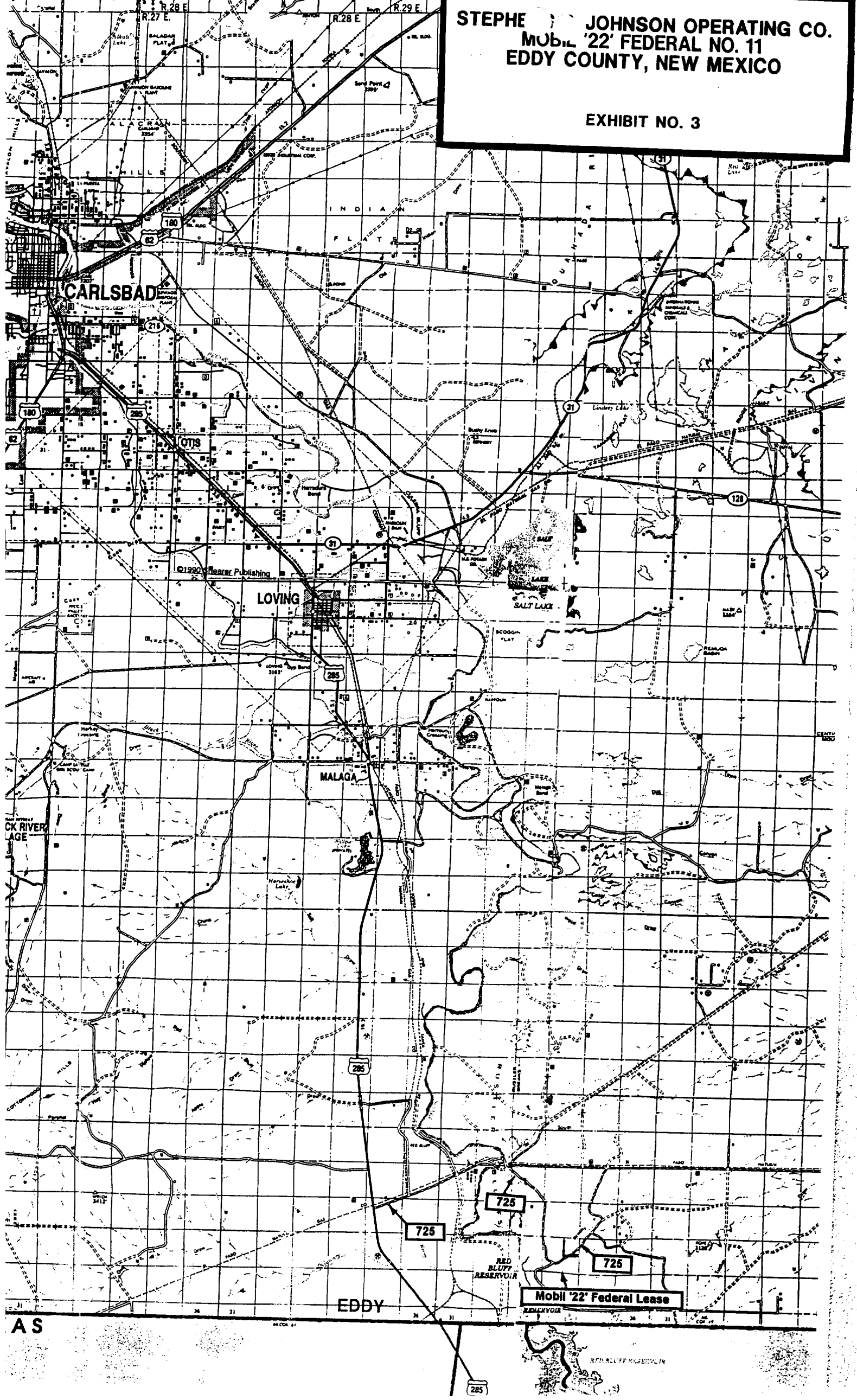
Cement Program:

8 5/8" surface casing:                      Cemented to surface.

5 1/2" production casing:                      Sufficient cement to protect all zones from TD back up to base of salt.

**STEPHEN JOHNSON OPERATING CO.**  
**MOBIL '22' FEDERAL NO. 11**  
**EDDY COUNTY, NEW MEXICO**

**EXHIBIT NO. 3**



**AS**

**EDDY**

**Mobil '22' Federal Lease**

**285**