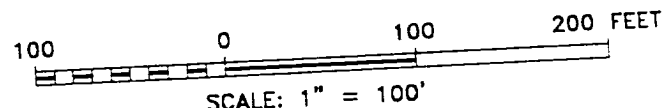
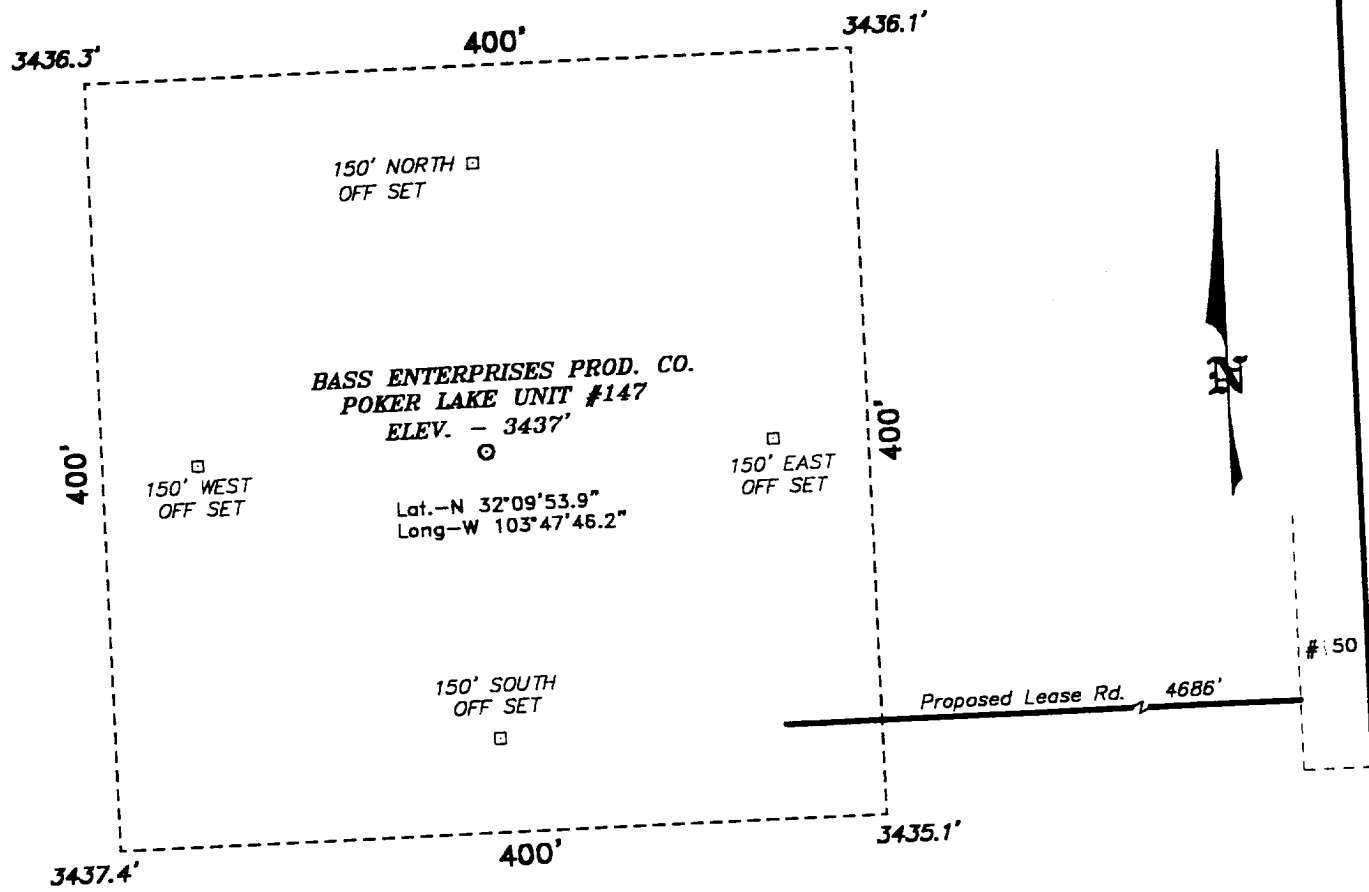


SECTION 5, TOWNSHIP 25 SOUTH, RANGE 31 EAST, N.M.P.M.,
 EDDY COUNTY, NEW MEXICO.



DIRECTIONS TO LOCATION:

FROM THE JUNCTION OF STATE HWY 128 AND CO. RD. 786, GO SOUTHWEST ON CO. RD. 786 APPROX. 5 MILES TO CO. RD. 791; THENCE SOUTH ON CO. RD. 791 APPROX. 2 MILES TO A POINT WHICH LIES APPROX. 1 MILE EAST OF THE PROPOSED WELL LOCATION.

BASS ENTERPRISES PRODUCTION CO.
 REF: Poker Lake Unit No. 147 / Well Pad Topo
 THE POKER LAKE UNIT No. 147 LOCATED 660' FROM THE NORTH LINE AND 1650' FROM THE EAST LINE OF SECTION 5, TOWNSHIP 25 SOUTH, RANGE 31 EAST, N.M.P.M., EDDY COUNTY, NEW MEXICO.

BASIN SURVEYS P.O. BOX 1786 - HOBBS, NEW MEXICO