

U.L.O.C.D. COPY

RECEIVED

Form 9-131 C (May 1963)

SUBMIT IN TRIPLICATE\* (One in instruction on reverse side)

Form approved. Budget Bureau No. 42-R1425.

UNITED STATES DEPARTMENT OF THE INTERIOR GEOLOGICAL SURVEY

O. C. D. ARTESIA, OFFICE

30-005-60724

5. LEASE DESIGNATION AND SERIAL NO. USA - NM - 11593

6. IF INDIAN, ALLOTTEE OR TRIBE NAME

7. UNIT AGREEMENT NAME

8. FARM OR LEASE NAME Red Rock "NB" Federal Co.

9. WELL NO. 2

10. FIELD AND POOL, OR WILDCAT < Wildcat Wolfcamp

11. SEC., T., R., M., OR BLK. AND SURVEY OR AREA Sec. 35-T6S-R24E

12. COUNTY OR PARISH Chaves 13. STATE NM

APPLICATION FOR PERMIT TO DRILL, DEEPEN, OR PLUG BACK

1a. TYPE OF WORK DRILL [X] DEEPEN [ ] PLUG BACK [ ]

b. TYPE OF WELL OIL WELL [ ] GAS WELL [X] OTHER [ ] SINGLE ZONE [X] MULTIPLE ZONE [ ]

2. NAME OF OPERATOR Yates Petroleum Corporation

3. ADDRESS OF OPERATOR 207 South 4th Street, Artesia, New Mexico 88210

4. LOCATION OF WELL (Report location clearly and in accordance with any State requirements.)\* At surface 660' FSL & 1980' FEL At proposed prod. zone APR 14 1980

14. DISTANCE IN MILES AND DIRECTION FROM NEAREST TOWN OR CITY, OFFICE\* Approx. 31 miles N NE of Roswell, New Mexico

15. DISTANCE FROM PROPOSED\* LOCATION TO NEAREST PROPERTY OR LEASE LINE, FT. (Also to nearest drlg. unit line, if any) 660

16. NO. OF ACRES IN LEASE

17. NO. OF ACRES ASSIGNED TO THIS WELL Rotary

18. DISTANCE FROM PROPOSED LOCATION\* TO NEAREST WELL, DRILLING, COMPLETED, OR APPLIED FOR, ON THIS LEASE, FT.

19. PROPOSED DEPTH approx. 4450'

20. ROTARY OR CABLE TOOLS Rotary

21. ELEVATIONS (Show whether DF, RT, GR, etc.) 4036.8 GR

22. APPROX. DATE WORK WILL START\* As soon as approved

23. PROPOSED CASING AND CEMENTING PROGRAM

Table with 5 columns: SIZE OF HOLE, SIZE OF CASING, WEIGHT PER FOOT, SETTING DEPTH, QUANTITY OF CEMENT. Rows include 17 1/2" casing, 12 1/2" casing, 8 3/4" or 7 7/8" casing, 5 1/2" or 4 1/2" casing, 15.5 or 10.5# weight, approx. 450 and 1500 setting depths, and circulate quantities.

We propose to drill and test the Wolfcamp and intermediate formations. Approx. 450' of surface casing will be set and cement circulated to shut off gravel and caving. If commercial, 5 1/2" or 4 1/2" production casing will be run and cemented with an adequate cover, perforate and stimulate as needed for production.

MUD PROGRAM: FW gel and LCM to 1500', fresh water to 3500', salt gel, flosal-driskak KCL to TD. MW 9.5 - 9.8

BOP PROGRAM: BOP's will be installed on 8 5/8" casing and tested daily.

GAS NOT DEDICATED.

IN ABOVE SPACE DESCRIBE PROPOSED PROGRAM: If proposal is to deepen or plug back, give data on present productive zone and proposed new productive zone. If proposal is to drill or deepen directionally, give pertinent data on subsurface locations and measured and true vertical depths. Give blowout preventer program, if any.

24. SIGNED [Signature] TITLE Geographer DATE 4/10/80

(This space for Federal or State office use)

PERMIT NO. APPROVAL DATE [Signature] 4/11/1980

APPROVED BY TITLE DATE

CONDITIONS OF APPROVAL, IF ANY:

NL MEXICO OIL CONSERVATION COMMISS  
WELL LOCATION AND ACREAGE DEDICATION PLAT

Form C-102  
Supersedes C-128  
Effective 1-1-65

All distances must be from the outer boundaries of the Section.

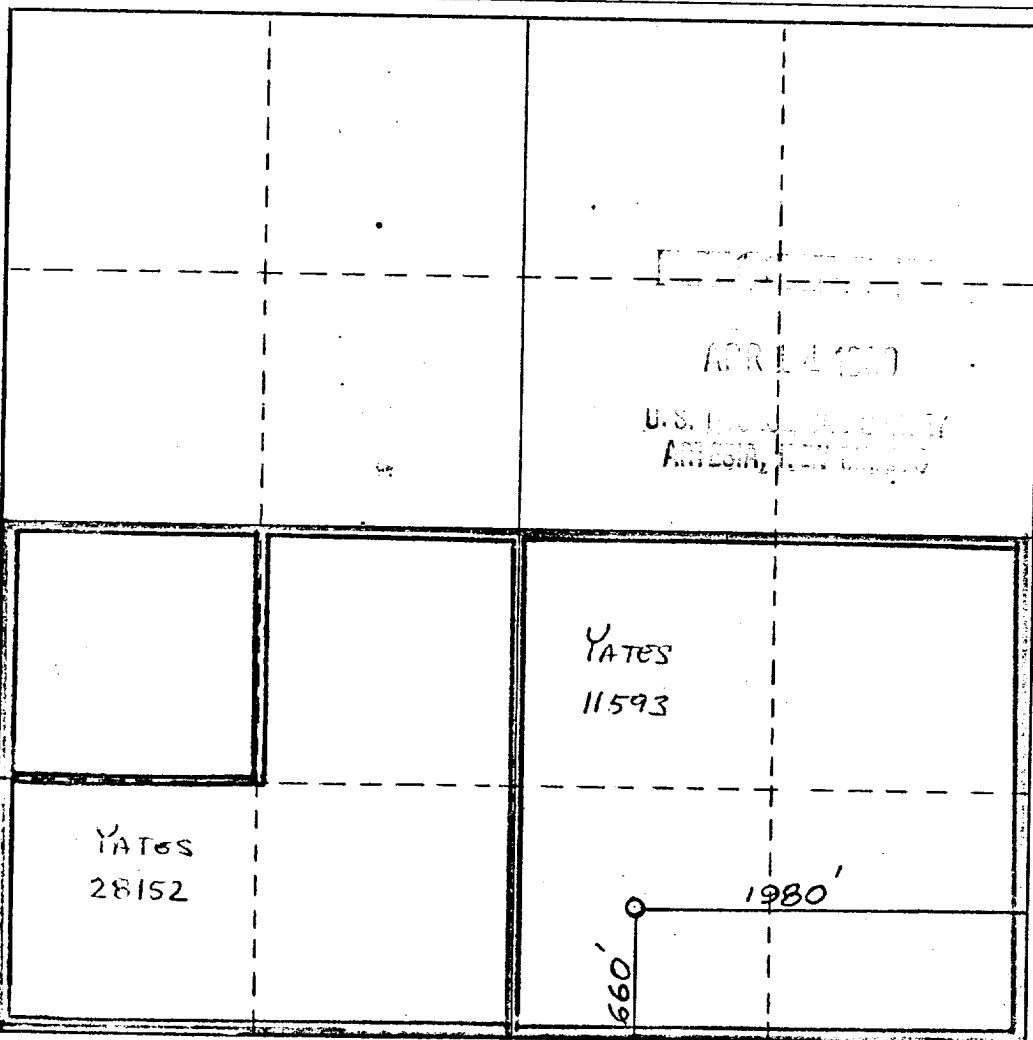
Operator <b>Yates Petroleum Corporation</b>		Lease <b>Red Rock NB Federal</b>		Well No. <b>2</b>
Unit Letter <b>0</b>	Section <b>35</b>	Township <b>6 South</b>	Range <b>24 East</b>	County <b>Chaves</b>
Actual Footage Location of Well: <b>660</b> feet from the <b>South</b> line and <b>1980</b> feet from the <b>East</b> line				
Ground Level Elev. <b>4036.8</b>	Producing Formation <b>WOLF CAMP</b>	Pool <b>WILDCAT</b>	Dedicated Acreage: <b>320</b> Acres	

1. Outline the acreage dedicated to the subject well by colored pencil or hachure marks on the plat below.
2. If more than one lease is dedicated to the well, outline each and identify the ownership thereof (both as to working interest and royalty).
3. If more than one lease of different ownership is dedicated to the well, have the interests of all owners been consolidated by communitization, unitization, force-pooling, etc?

Yes  No If answer is "yes," type of consolidation COMMUNITIZATION

If answer is "no," list the owners and tract descriptions which have actually been consolidated. (Use reverse side of this form if necessary.)

No allowable will be assigned to the well until all interests have been consolidated (by communitization, unitization, forced-pooling, or otherwise) or until a non-standard unit, eliminating such interests, has been approved by the Commission.



CERTIFICATION

I hereby certify that the information contained herein is true and complete to the best of my knowledge and belief.

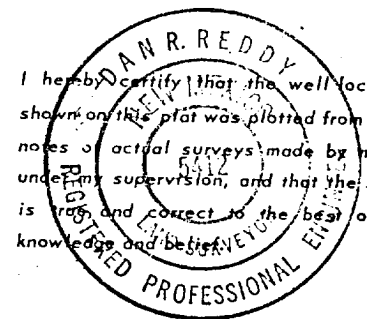
*Alisera Rodriguez*  
Name

*ALISERA RODRIGUEZ*  
Position

*GEOL-ENGINEER*  
Company

*YATES PETROLEUM CORP*  
Date

*4-10-80*



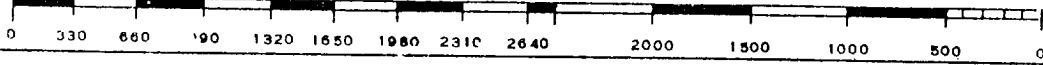
I hereby certify that the well location shown on this plat was plotted from field notes of actual surveys made by me or under my supervision, and that the same is true and correct to the best of my knowledge and belief.

Date Surveyed  
**Apr. 5, 1980**

Registered Professional Engineer and/or Land Surveyor

*Dan R. Reddy*  
Certificate No.

**NMPE&LS #5412**





N.M. O.C.D. COPY

# United States Department of the Interior

RECEIVED

GEOLOGICAL SURVEY

P. O. Drawer U  
Artesia, New Mexico 88210

JUN 12 1980

O. C. D.

June 11, 1980 ARTESIA, OFFICE

Yates Petroleum Corporation  
207 South Fourth Street  
Artesia, New Mexico 88210

Gentlemen:

YATES PETROLEUM CORPORATION Red Rock "NB" Fed No. 2 660 FSL 1980 FEL Sec. 35 T.6S R.24E Chaves County Lease No. NM-11593
---

Above Data Required on Well Sign
----------------------------------

Your APPLICATION FOR PERMIT TO DRILL the above-described well to a depth of 4,450 feet to test the Wolfcamp is hereby approved subject to compliance with the OIL AND GAS OPERATING REGULATIONS (30 CFR 221) and the following conditions:

1. Drilling operations authorized are subject to compliance with the attached General Requirements for Oil and Gas Operations on Federal Leases, dated July 1, 1978.
2. Prior to commencing construction of road, pad, or other associated developments, operator will provide the dirt contractor with a copy of the Surface Use Plan and these Conditions of Approval including the attached General Requirements.
3. All access roads will be limited to a 12 foot wide driving surface, excluding turnarounds. Surface disturbance associated with road construction will be limited to 20 feet in width.
4. Submit a Daily Report of Operations from spud date until the well is completed and the Well Completion Report (form 9-330) is filed. The report should not be less than 8" x 5" in size and each page should identify the well.
5. All permanent above-ground structures and equipment shall be painted in accordance with the attached Painting Guidelines. The color used should simulate Sandstone Brown (Federal Standard No. 595A, color 20318 or 30318).
6. Before drilling below the 8-5/8" casing, the blowout preventer assembly will consist of a minimum of two ram type preventers.
7. A kelly cock will be installed and maintained in operable condition.

8. After setting the 8-5/8" casing string and before drilling into the Wolfcamp formation, the blowout preventers and related control equipment shall be pressure tested to rated working pressures. Any equipment failing to test satisfactorily shall be repaired or replaced. This office should be notified in sufficient time for a representative to witness the tests.
9. Notify the Survey by telephone 24 hours prior to spudding well.
10. Cement behind the 13-3/8" casing must be circulated.
11. Special Stipulations: Use BLM approved road (see attached map).
12. Please have anyone contacting the Survey in regard to this well to identify the well with all of the information required above for the well sign.

Sincerely yours,

(Orig. Sgd.) GEORGE H. STEWART

George H. Stewart  
Acting District Engineer

Yates Petroleum Corporation  
Red Rock "NB" Federal #2  
660' FSL and 1980' FEL  
Section 35 - T6S - R24E  
Chaves County, New Mexico

In conjunction with Form 9-331C, Application for Permit to Drill subject well, Yates Petroleum Corporation submits the following ten items of pertinent information in accordance with USGS requirements:

1. The geologic surface formation is sandy residuum.
2. The estimate tops of geologic markers are as follows:

San Andres	786'	TD	4450'
Glorieta	1486'		
Abo	3586'		
Wolfcamp	4356'		

3. The estimated depths at which anticipated water, oil or gas formations are expected to be encountered:

Water: Approximately 250' - 300'

Oil or Gas: 3600 - 4400

4. Proposed Casing Program: See Form 9-331C.
5. Pressure Control Equipment: See Form 9-331C and Exhibit B.
6. Mud Program: See Form 9-331C.
7. Auxiliary Equipment: Kelly Cock; pit level indicators and flow sensor equipment; sub with full-opening valve on floor, drill pipe connection.
8. Testing, Logging and Coring Program:  
Samples: Surface casing to TD  
DST's: As Warranted  
Logging: Intermediate casing to TD  
Coring: CNL-FDC TD to casing with GR-CNL on to surface and DLL from TD to casing.
9. No abnormal pressures or temperatures are anticipated.
10. Anticipated starting date: As soon as possible after approval.

Yates Petroleum Corporation  
Red Rock "NB" Federal #2  
Section 35 - T6S - R24E  
660' FSL and 1980' FEL  
(Exploratory Well)

APR 14 1950  
U.S. GEOLOGICAL SURVEY  
ALBUQUERQUE, N.M.

This plan is submitted with Form 9-331C, Application for Permit to Drill, covering the above described well. The purpose of this plan is to describe the location of the proposed well, the proposed construction activities and operations plan, the magnitude of surface disturbance involved, and the procedures to be followed in rehabilitation the surface after completion of the operations, so that a complete appraisal can be made of the environmental effect associated with the operation.

1. EXISTING ROADS.

Exhibit A is a portion of a county map showing the well and roads in the vicinity of the proposed location. The proposed wellsite is located approximately 27 miles north of Roswell, New Mexico and the access route to the location is indicated in red and green on Exhibit A.

DIRECTIONS:

1. Proceed north from Roswell on Highway 285 for a distance of approximately 27 miles.
2. Turn east for approximately 5 miles and turn south just before Guy Craudell's place for 1 1/4 mile to the Iwanowski "MM". The new road will start here.

2. PLANNED ACCESS ROAD.

- A. The proposed new access will be approximately 4200' in length from point of origin to the southwest edge of the drilling pad. The road will lie in a NW to SE direction.
- B. The new road will be 12 feet in width (driving surface).
- C. The new road will be bladed with drainage on one side. One turnout will be built.
- D. The route of the road is visible. The existing ranch road will be used for a little way.

3. LOCATION OF EXISTING WELL.

- A. There is drilling activity within a one-mile radius of the wellsite.

4. LOCATION OF EXISTING AND/OR PROPOSED FACILITIES.

- A. There are no production facilities on this lease at the present time.
- B. In the event that the well is productive, the necessary production facilities will be installed on the drilling pad. If the well is productive oil, a gas or diesel self-contained unit will be used to provide the necessary power. No power will be required if the well is productive of gas.

5. LOCATION AND TYPE OF WATER SUPPLY.

- A. It is planned to drill the proposed well with a fresh water system. The water will be obtained from commercial sources and will be hauled to the location by truck over the existing and proposed roads shown in the Exhibit A.

6. SOURCE OF CONSTRUCTION MATERIALS.

- A. There is no existing pit of construction material so none will be used.

7. METHODS OF HANDLING WASTE DISPOSAL.

- A. Drill cuttings will be disposed of in the reserve pits.
- B. Drilling fluids will be allowed to evaporate in the reserve pits until the pits are dry.
- C. Water produced during operations will be collected in tanks until hauled to an approved disposal system, or separate disposal application will be submitted to the USGS for appropriate approval.
- D. Oil produced during operation will be stored in tanks until sold.
- E. Current laws and regulations pertaining to the disposal of human waste will be complied with.
- F. Trash, waste paper, garbage and junk will be buried in a separate trash pit and covered with a minimum of 24 inches dirt. All waste material will be contained of prevent scattering by the wind.
- G. All trash and debris will be buried or removed from the wellsite within 30 days after finishing drilling and/or completion operations.

8. ANCILLARY FACILITIES.

- A. None required.

9. WELLSITE LAYOUT.

- A. Exhibit C shows the relative location and dimensions of the well pad, the reserve pits, etc.
- B. The location surface is sloping. Cut and fill will be required on location with pits to the NE.
- C. The reserve pits will be plastic lined.
- D. A 400' X 400' area has been staked and flagged.

10. PLANS FOR RESTORATION OF THE SURFACE.

- A. After finishing drilling and/or completion operations, all equipment and other material not needed for further operations will be removed. The location will be cleaned of all trash and junk to leave the wellsite in as aesthetically pleasing a condition as possible.

- B. Unguarded pits, if any, containing fluids will be fenced until they have dried and leveled.
- C. If the proposed well is non-productive, all rehabilitation and/or vegetation requirements of the BLM will be complied with and will be accomplished as expeditiously as possible. All pits will be filled leveled within 90 days after abandonment.

11. OTHER INFORMATION.

- A. Topography: The land surface in the vicinity of the wellsite consists of a minor draw on one side. The immediate area of the wellsite is discussed above in paragraph 9B.
- B. Flora and Fauna: The vegetation cover on wellsite consists of mesquite and miscellaneous desert growth. No wildlife was observed, but the wildlife in the area probably includes those typical of semi-arid desert land. The area is used for cattle grazing.
- C. The Pecos River is approximately 7 miles east.
- D. There are no inhabited dwellings in the vicinity of the proposed well.
- E. Surface Ownership: The wellsite is on federal minerals and surface.
- F. There is no evidence of archaeological, historical or cultural sites in the area.

12. OPERATOR'S REPRESENTATIVE.

- A. The field representative responsible for assuring compliance with the approved surface use plan is:

Gliserio "Rod" Rodriguez  
Yates Petroleum Corporation  
207 South 4th Street  
Artesia, New Mexico 88210  
(505) 746-3558

13. CERTIFICATION.

I hereby certify that I, or persons under my direct supervision, have inspected the proposed wellsite and access route, that I am familiar with the conditions which presently exist; that the statements made in this plan are to the best of my knowledge true and correct; and, that the work associated with the operations proposed herein will be performed by Yates Petroleum Company and its contractors and subcontractors in conformity with this plan and the terms and conditions under which it is approved.

4-10-80  
Date

  
Gliserio Rodriguez, Geographer



1010000 FEET  
3737  
ROSWELL 31 MI. 4.4 MI. TO U.S. 285  
3736  
3735  
22.54 FJ  
3734000m. N.  
T. 6 S  
T. 7 S  
3733  
3732  
14 MI. TO U.S. 285

YPC CHAVES COUNTY FARD  
Guy CRANNSTEN Fivemile Ranch

Fivemile

Headquarters Well

Draw

McDerm Wells

Iwonski

RED ROCK ND FED. # 2

TX Tank

# EXHIBIT A

YATES PETROLEUM CORP.  
RED ROCK "ND" FED. # 2  
SECTION 35 T6S-R24E  
660' FSL - 1980' FEL  
CHAVES CTY, N.M.

BM 4146

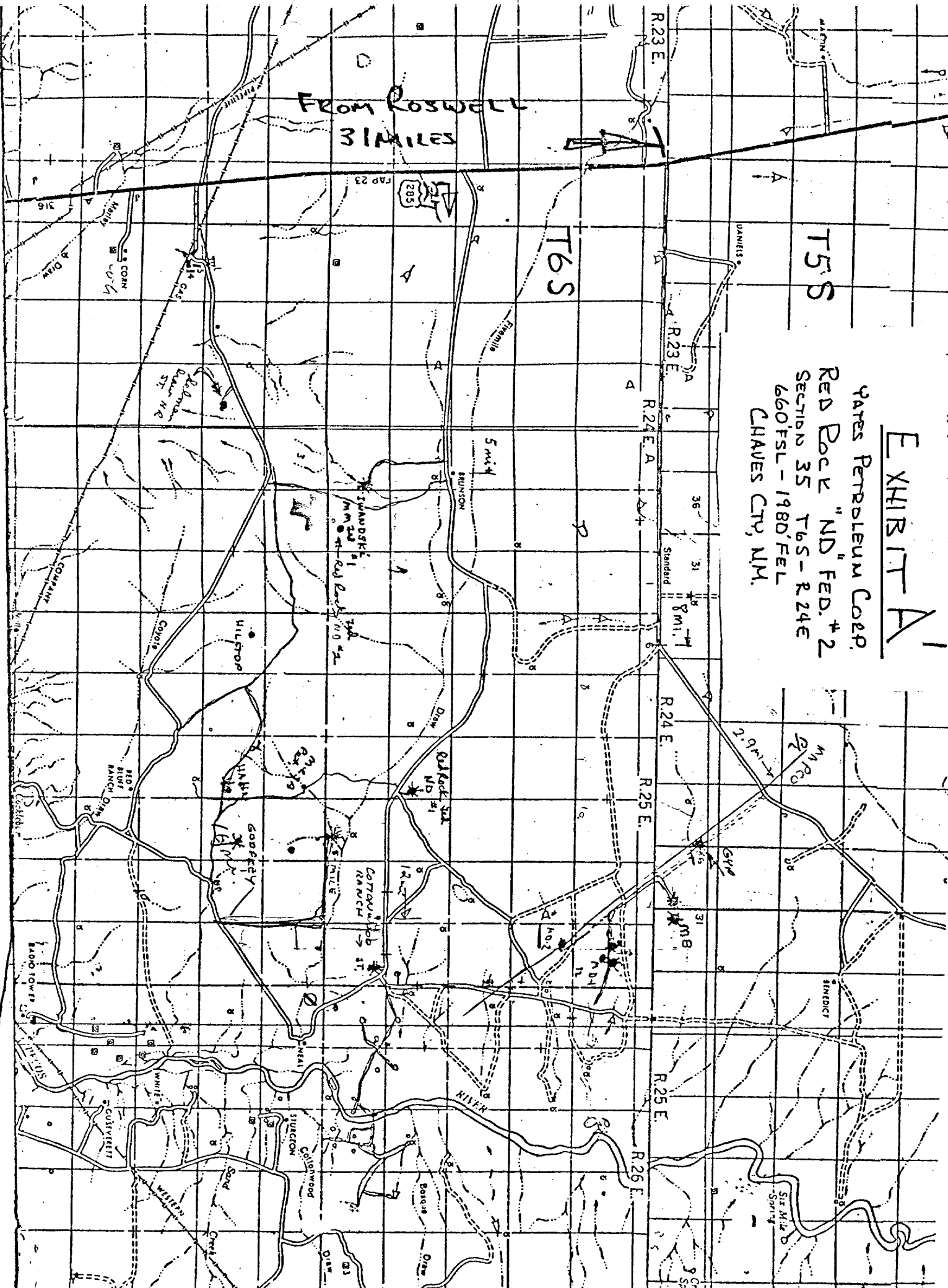
FIVE BM

# EXHIBIT A

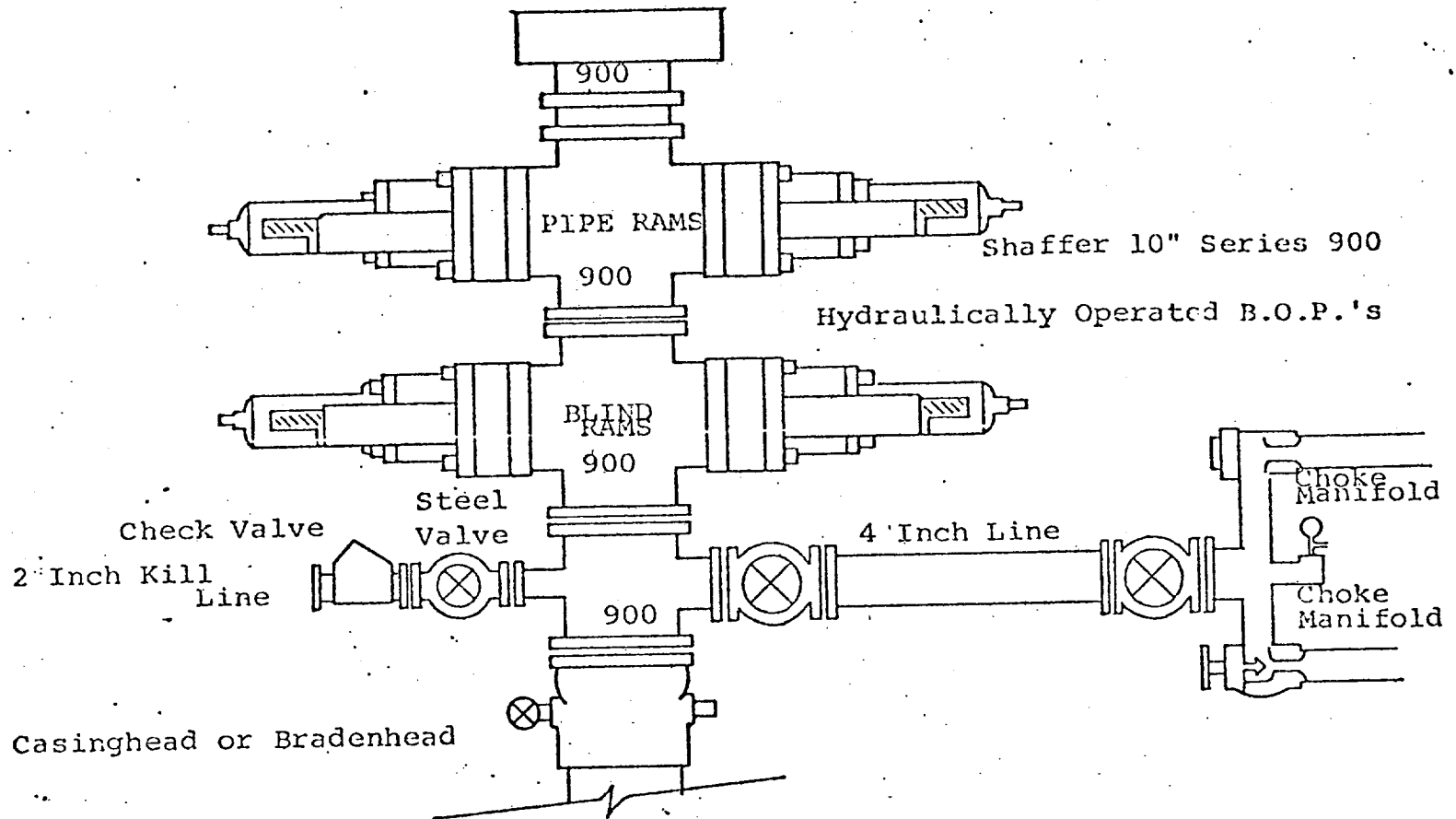
YATES PETROLEUM CORP.  
RED ROCK "ND" FED. #2  
SECTION 35 T6S-R24E  
660FSL-1980'FEL  
CHAVES CTY, N.M.

FROM ROSWELL  
31 MILES

T6S



# EXHIBIT B



## THE FOLLOWING CONSTITUTE MINIMUM BLOWOUT PREVENTER REQUIREMENTS

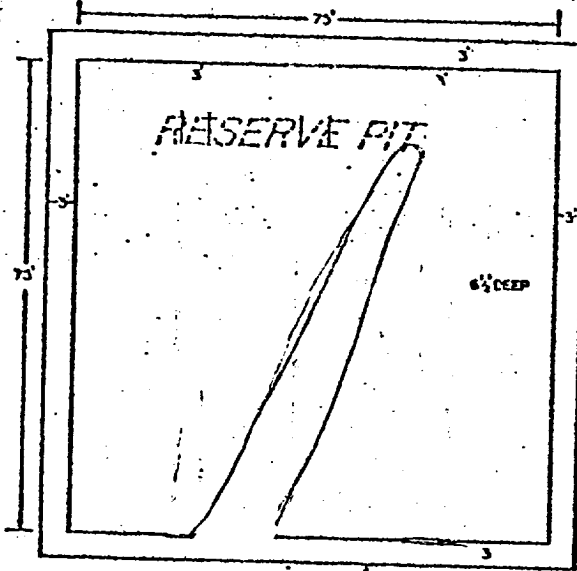
1. All preventers to be hydraulically operated with secondary manual controls installed prior to drilling out from under casing.
2. Choke outlet to be a minimum of 4" diameter.
3. Kill line to be of all steel construction of 2" minimum diameter.
4. All connections from operating manifolds to preventers to be all steel. hole or tube a minimum of one inch in diameter.
5. The available closing pressure shall be at least 15% in excess of that required with sufficient volume to operate the B.O.P.'s.
6. All connections to and from preventer to have a pressure rating equivalent to that of the B.O.P.'s.
7. Inside blowout preventer to be available on rig floor.
8. Operating controls located a safe distance from the rig floor.
9. Hole must be kept filled on trips below intermediate casing. Operator not responsible for blowouts resulting from not keeping hole full.
10. D. P. float must be installed and used below zone of first gas intrusion.

# EXHIBIT C

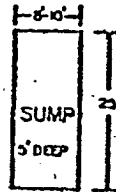
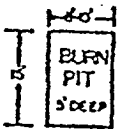
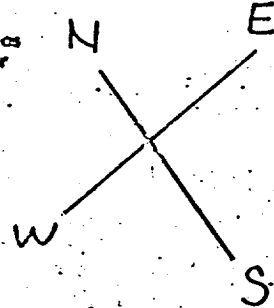
## YATES PETROLEUM CORP

0-6000 FT.

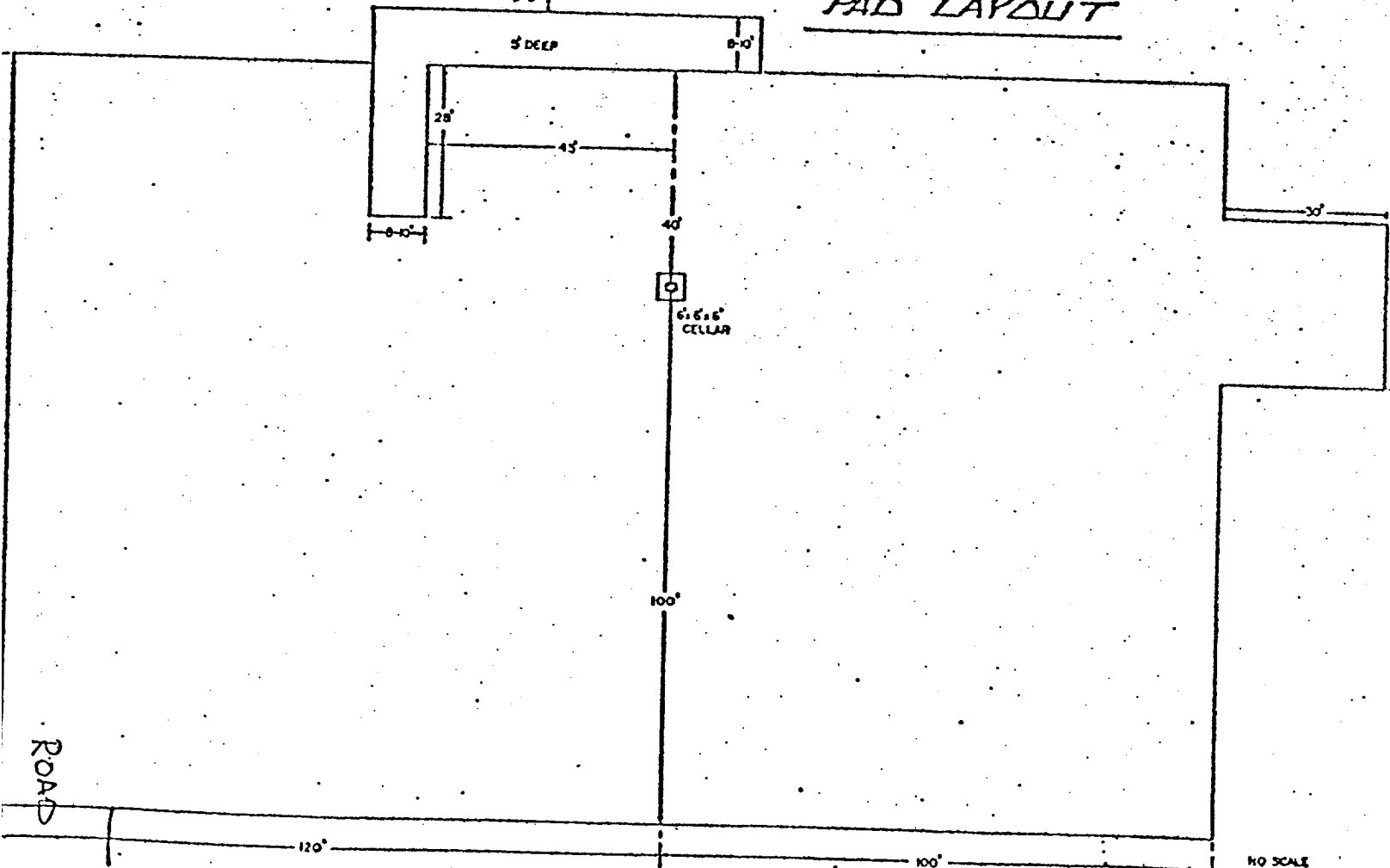
Reserve Pit bottom  
to be at ground level  
to -11.



NOTE:  
Inside walls must be as  
high and wide as outer  
walls of pit.



### PAD LAYOUT



NO SCALE