

NM OIL CONS. COMMISSION

Drawn DD

Artesia, NM 88210

**UNITED STATES
DEPARTMENT OF THE INTERIOR**

GEOLOGICAL SURVEY

SUBMIT IN LPLICATE*
(Other instructions on reverse side)

Form approved.
Budget Bureau No. 42-R1425.

30-015-61519

C/SF

APPLICATION FOR PERMIT TO DRILL, DEEPEN, OR PLUG BACK

1a. TYPE OF WORK

DRILL ☒

DEEPEN ☐

PLUG BACK ☐

b. TYPE OF WELL

OIL WELL ☐

GAS WELL ☒

OTHER

SINGLE ZONE ☒

MULTIPLE ☐

2. NAME OF OPERATOR

TRANSWESTERN GAS SUPPLY COMPANY

3. ADDRESS OF OPERATOR

P.O. Box 2521, Houston, TX 77001

APR 5 1982

4. LOCATION OF WELL (Report location clearly and in accordance with any State requirements)

At surface

1980'/N 1880'/W Sec. 4-5S-22E

O. C. D.
ARTESIA, OFFICE

At proposed prod. zone

Same

14. DISTANCE IN MILES AND DIRECTION FROM NEAREST TOWN OR POST OFFICE*

Approximately 36 miles north-northwest of Roswell, N.M.

15. DISTANCE FROM PROPOSED* LOCATION TO NEAREST PROPERTY OR LEASE LINE, FT.

760'

16. NO. OF ACRES IN LEASE

1279.73

17. NO. OF ACRES ASSIGNED TO THIS WELL

160

18. DISTANCE FROM PROPOSED* LOCATION TO NEAREST WELL, DRILLING, COMPLETED, OR APPLIED FOR, ON THIS LEASE, FT.

None

19. PROPOSED DEPTH

4500'

20. ROTARY OR CABLE TOOLS

Rotary

21. ELEVATIONS (Show whether DF, RT, GR, etc.)

4396' GL

22. APPROX. DATE WORK WILL START*

March 7, 1982

23.

PROPOSED CASING AND CEMENTING PROGRAM

SIZE OF HOLE	SIZE OF CASING	WEIGHT PER FOOT	SETTING DEPTH	QUANTITY OF CEMENT
17 1/2"	13 3/8"	48.0# K-55	60'	Redimix (TD to Surface)
12 1/4"	8 5/8"	24.0# K-55	1800'±	950 sx ± (Circulate)
7 7/8"	4 1/2"	10.5# J-55	TD	250 sx ± (Sufficient to Isolate Oil or Gas Zones)

Propose to drill to approximately 4500' to test Abo and intermediate formations.

See attached "Supplemental Drilling Data".

See Exhibit "D" for BOP diagram.

Gas is dedicated.

RECEIVED
FEB 22 1982

OIL & GAS
U.S. GEOLOGICAL SURVEY
ROSWEIL, NEW MEXICO

IN ABOVE SPACE DESCRIBE PROPOSED PROGRAM: If proposal is to deepen or plug back, give data on present productive zone and proposed new productive zone. If proposal is to drill or deepen directionally, give pertinent data on subsurface locations and measured and true vertical depths. Give blowout preventer program, if any.

24.

SIGNED

JERRY W. LONG

TITLE Agent

DATE February 22, 1982

(This space for Federal or State use)

(Orig. Sgd.) GEORGE H. STEWART

PERMIT NO.

APPROVAL DATE

APPROVED BY

MAR 30 1982

TITLE

DATE

CONDITIONS OF APPLICATION, IF ANY:

JAMES A. GILLHAM
DISTRICT SUPERVISOR

*See Instructions On Reverse Side

Posted ID-1
API + NL Books
4-9-82

All distances must be from the outer boundaries of the Section.

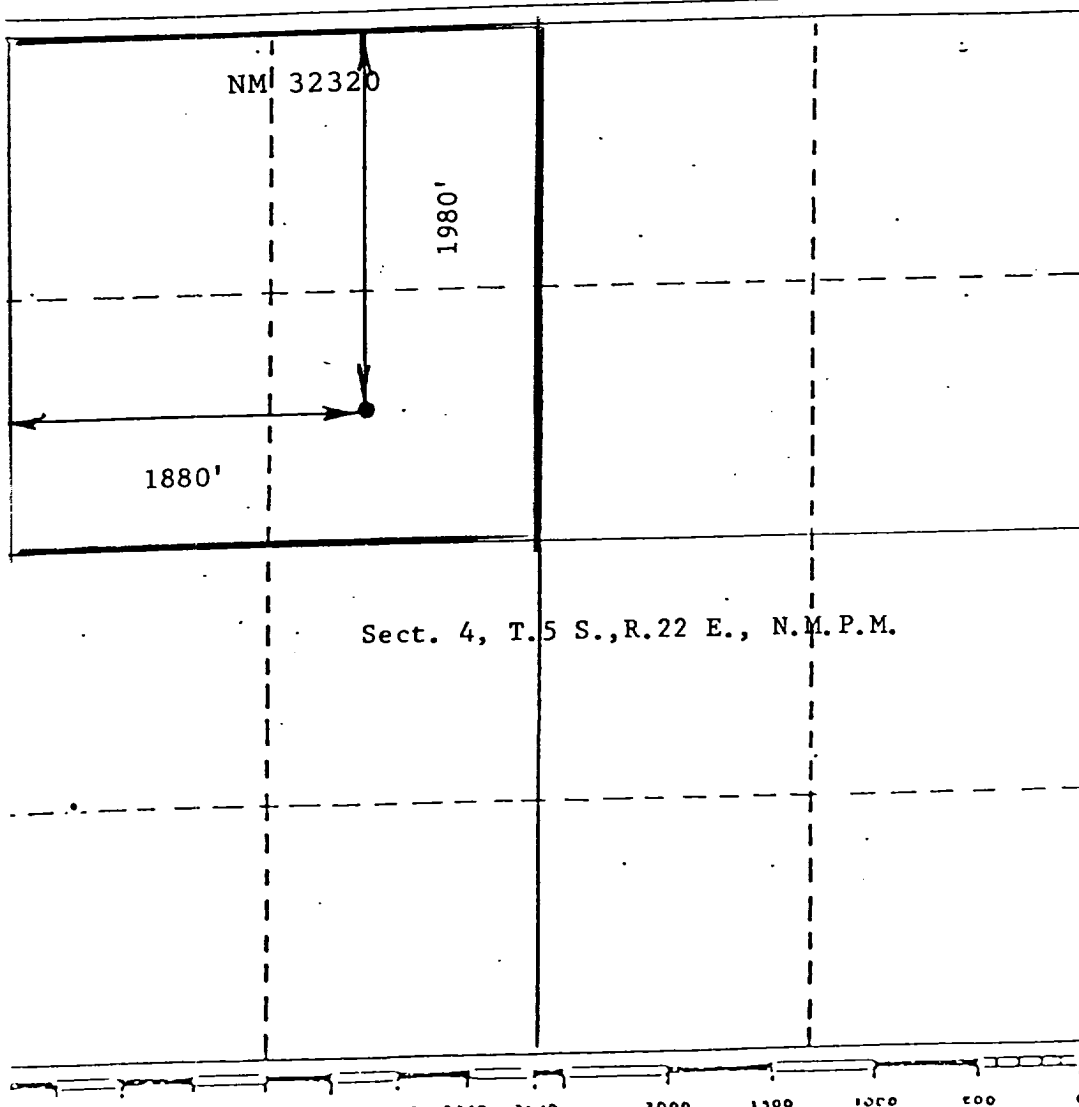
Operator Transwestern Gas Supply Co.		Lease Rock House Federal		Well No. 1
Initial Letter F	Section 4	Township 5 South	Range 22 East	County Chaves
Actual Postage Location of Well:				
1980	feet from the North	line and	1880	feet from the West
Ground Level Elev. 4396	Producing Formation Abo	Pool Undesignated Abo	Dedicated Acreage: 160 Acres	

1. Outline the acreage dedicated to the subject well by colored pencil or hatchure marks on the plat below.
2. If more than one lease is dedicated to the well, outline each and identify the ownership thereof (both as to working interest and royalty). Single Lease
3. If more than one lease of different ownership is dedicated to the well, have the interests of all owners been consolidated by communitization, unitization, force-pooling, etc?

☐ Yes ☐ No If answer is "yes," type of consolidation _____

If answer is "no," list the owners and tract descriptions which have actually been consolidated. (Use reverse side of this form if necessary.) _____

No allowable will be assigned to the well until all interests have been consolidated (by communitization, unitization, forced-pooling, or otherwise) or until a non-standard unit, eliminating such interests, has been approved by the Division.



CERTIFICATION	
I hereby certify that the information contained herein is true and complete to the best of my knowledge and belief.	
Name	JERRY W. LONG
Position	Agent
Company	TRANSWESTERN GAS SUPPLY CO.
Date	February 22, 1982
I hereby certify that the well location shown on this plat was plotted from field notes of actual surveys made by me or under my supervision, and that the same is true and correct to the best of my knowledge and belief.	
Date Surveyed	July 1981
Registered Professional Engineer and/or Land Surveyor	JOHN D. JAQUESS
Certificate No.	6290

SUPPLEMENTAL DRILLING DATA

TRANSWESTERN GAS SUPPLY COMPANY
No.1 Rock House Federal
SE $\frac{1}{4}$ NW $\frac{1}{4}$ Sec.4-5S-22E
Chaves County, N.M.

NM 32320

The following items supplement Form 9-331C in accordance with instructions contained in NTL-6.

1. SURFACE FORMATION: Permian San Andres
2. ESTIMATED TOPS OF GEOLOGIC MARKERS:

San Andres	Surface
Glorieta	750'
Tubb	2300'
Abo	3000'
3. ESTIMATED DEPTHS TO WATER, OIL OR GAS FORMATIONS:

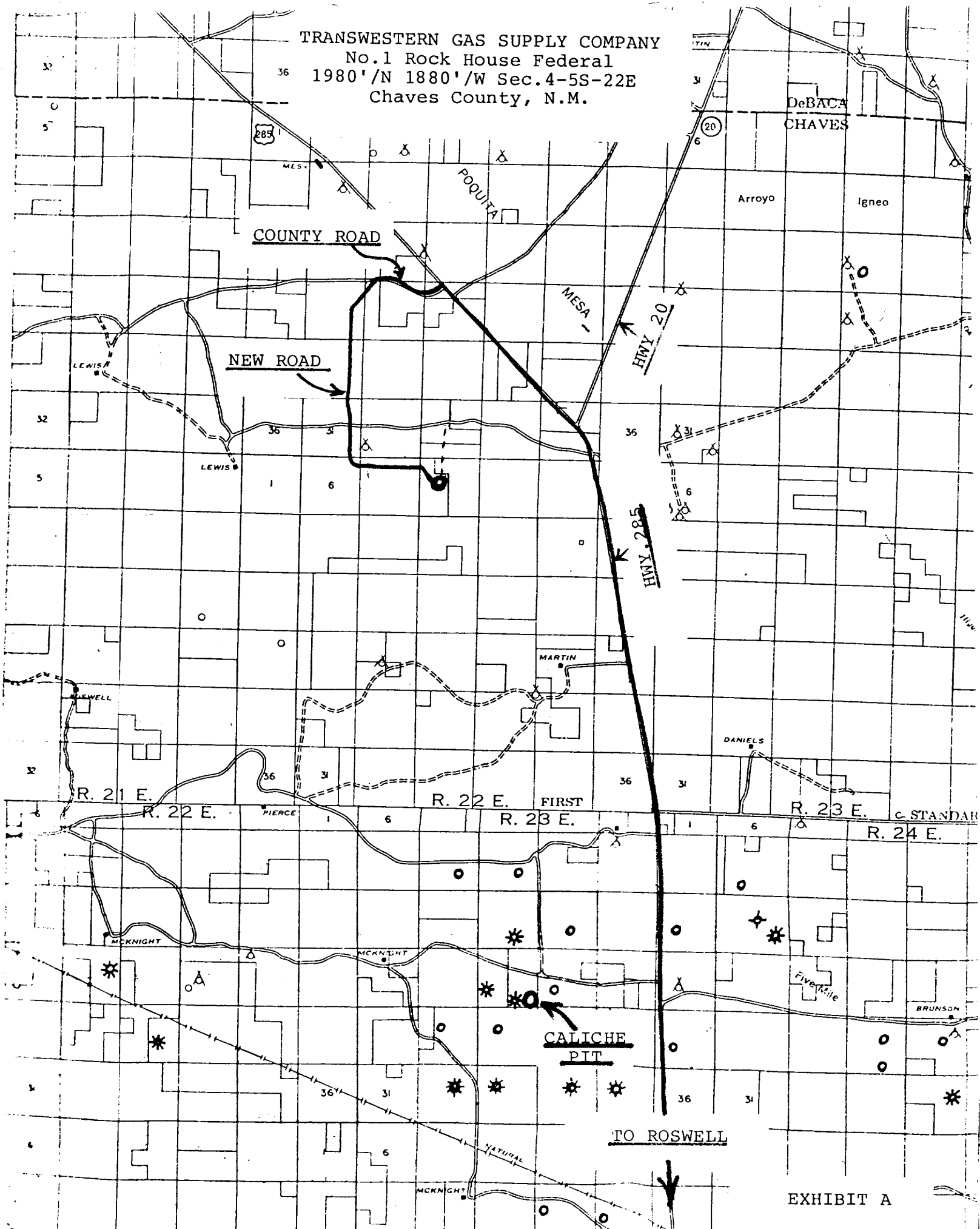
Water	- Surface to 300'
Gas	- 3000' to 4500'
4. PROPOSED CASING PROGRAM:

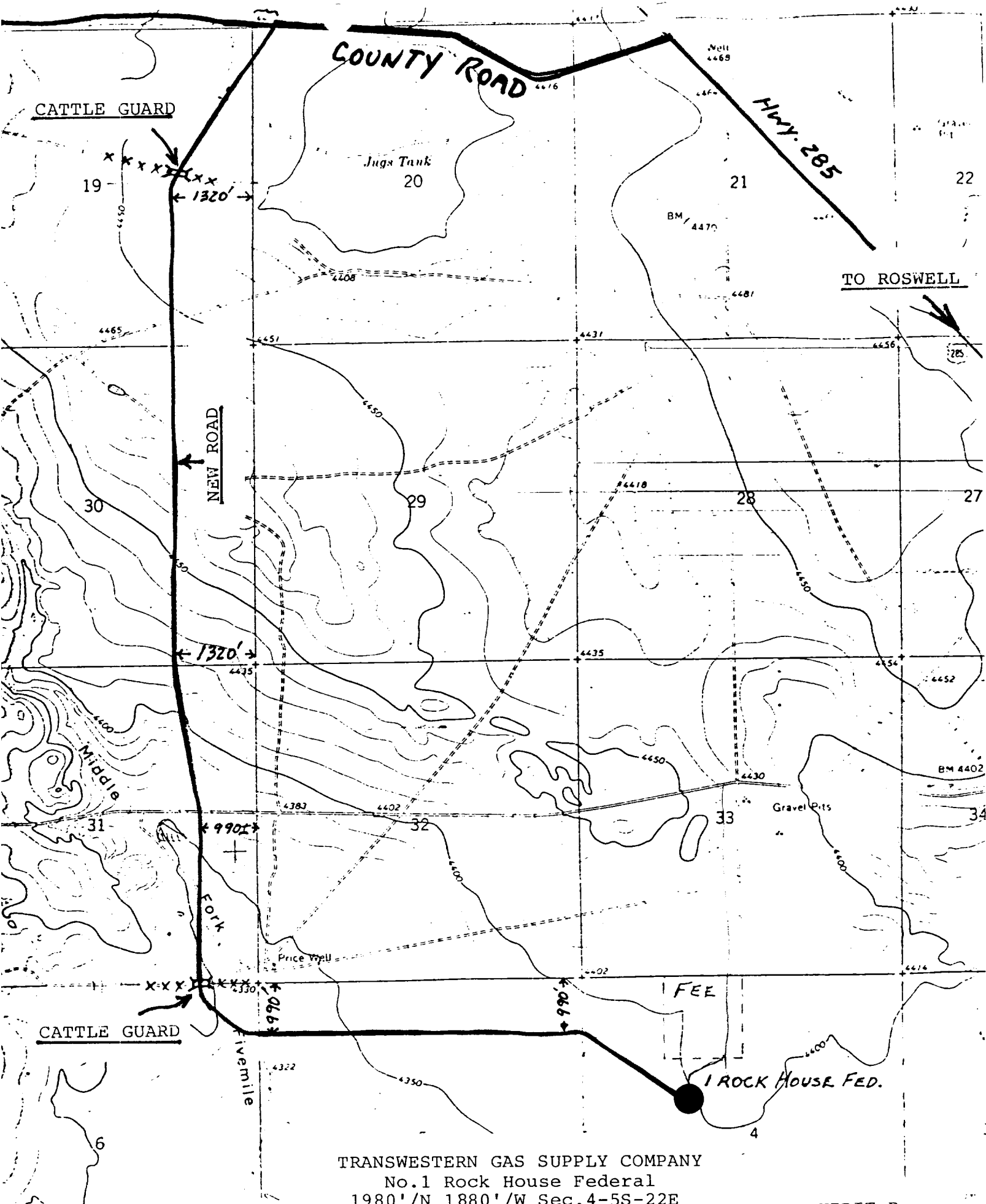
13 3/8" Casing	- Set two joints with rat hole machine and grout to surface.
8 5/8" Casing	- Set at 1800'± and cement with an estimated 950 sx of cement, circulated to surface.
4 1/2" Casing	- Set to total depth and cement with an estimated 250 sx of cement to isolate all water, oil and gas zones.

Type of cement and additives will be determined by hole conditions. The intermediate casing and production casing will be tested to 1000 psi. after cementing.
5. PRESSURE CONTROL EQUIPMENT: Blowout preventer stack will consist of double-ram blowout preventer and rotating head rated to 3000#WP. A sketch of the BOP is attached.
6. CIRCULATING MEDIUM: Hole for 13 3/8" conductor pipe will be drilled with a rat hole auger. Air will be used as the circulating medium for the remainder of the drilling. It is anticipated that a foam additive will be necessary until the intermediate casing is cemented.

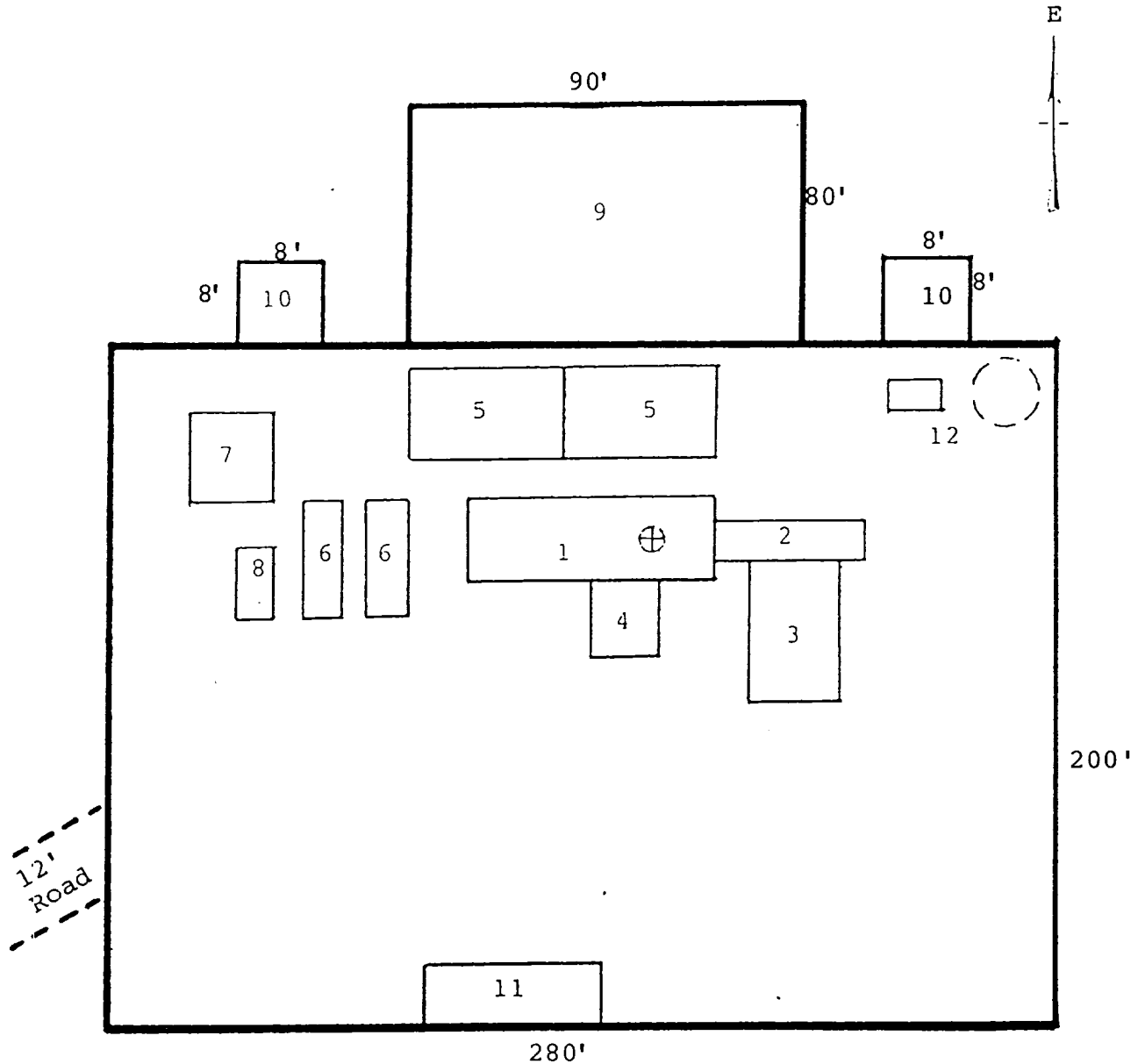
7. AUXILIARY EQUIPMENT: Full-opening kelly cock, to fit the drill string in use, will be kept on the rig floor at all times.
8. TESTING, LOGGING AND CORING PROGRAM:
 - Samples: Surface casing shoe to TD
 - DST's: None anticipated
 - Logging: Gamma Ray-Neutron log and other logs as recommended by well-site geologist.
 - Coring: None anticipated
9. ABNORMAL PRESSURES, TEMPERATURES OR HYDROGEN SULFIDE: None anticipated. Maximum bottom-hole pressure should not exceed 1500 psi. Bottom-hole temperature will be about 110°F.
10. ANTICIPATED STARTING DATE: Drilling will commence about March 7, 1982. Drilling should be completed within 10 days. Completion operations (perforations and stimulation) will follow drilling operations.

TRANSWESTERN GAS SUPPLY COMPANY
No.1 Rock House Federal
1980'/N 1880'/W Sec.4-5S-22E
Chaves County, N.M.





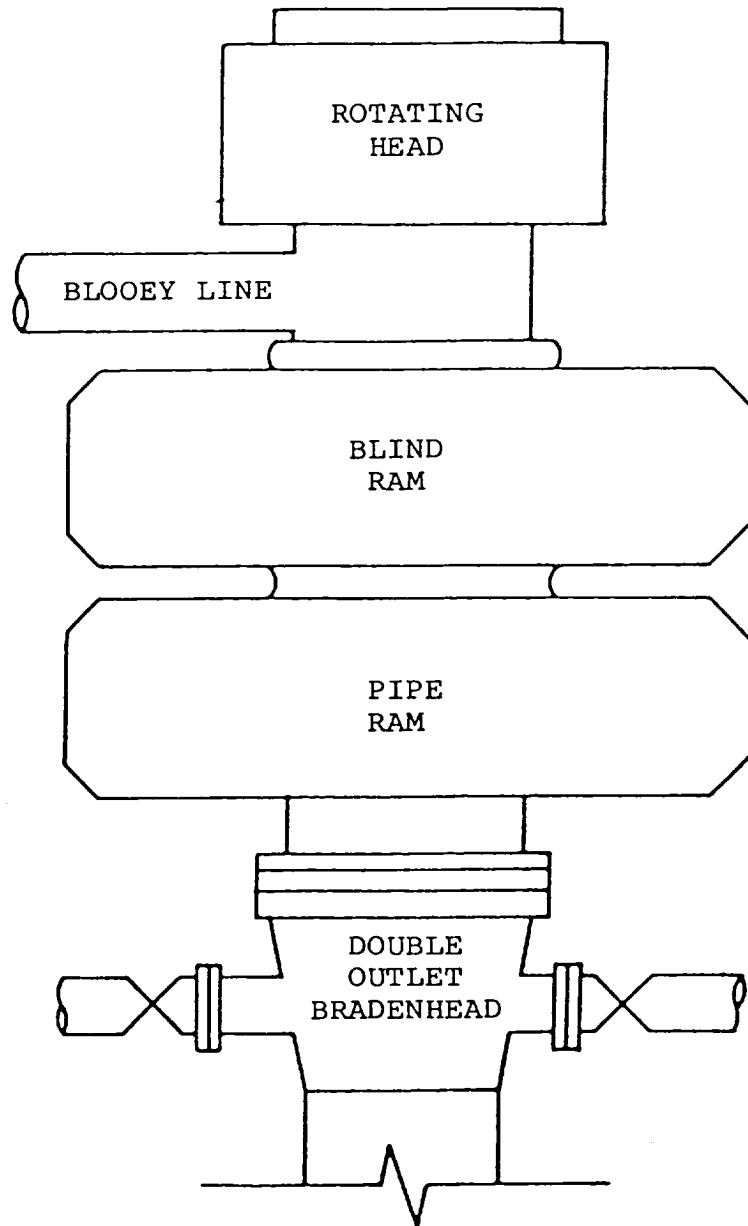
TRANSWESTERN GAS SUPPLY COMPANY
 No.1 Rock House Federal
 1980'/N 1880'/W Sec.4-5S-22E
 Chaves County, N.M.



RIG LAYOUT

- | | |
|-----------------|---------------------------|
| 1. Substructure | 7. Water Tank |
| 2. Catwalk | 8. Light Plant |
| 3. Pipe Rack | 9. Reserve Pit |
| 4. Doghouse | 10. Trash Pit |
| 5. Mud Pits | 11. Trailer House |
| 6. Mud Pumps | 12. Production Facilities |

TRANSWESTERN GAS SUPPLY COMPANY
No.1 Rock House Federal
1980'/N 1880'/W Sec.4-5S-22E
Chaves County, N.M.



BOP STACK

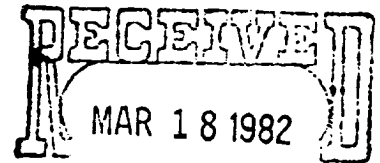
3000 PSI WORKING PRESSURE



JERRY W. LONG
CONSULTANT

March 17, 1982

District Supervisor
Minerals Management Service
P.O. Drawer 1857
Roswell, New Mexico 88201



OIL & GAS
U.S. GEOLOGICAL SURVEY
ROSWELL, NEW MEXICO

Gentlemen:

Application to Drill for the Transwestern Gas Supply Company No.1 Rock House Federal well, located in the SE $\frac{1}{4}$ NW $\frac{1}{4}$ Sec.4, T.5S., R.22E., Chaves County, New Mexico, on Federal lease NM 32320, was submitted to your office on February 22, 1982. The Operator has recently consummated an agreement with the rancher whereby a shorter road will be used for access. Consequently, the Surface Use Plan is revised as to the following information:

1. EXISTING ROADS:

- B. Directions: From the intersection of Hwy.285 and Hwy. 70, north of Roswell, go 28 miles north on Hwy. 285. Turn west on vacated County road and go 2 $\frac{1}{2}$ miles. Go about 1 mile south to location.

2. PLANNED ACCESS ROAD:

- A. Length and Width: The access road will consist of 2.5 miles of former County Road on the Jerry Don Martin Ranch and 3/4 mile of road on the Sterling Martin Ranch. About 700' of access road will be on Public land within the lease to be drilled. The access road will be bladed to a width of 12'.

The Operator and the surface owner have reached an agreement regarding the use and restoration of the portion of the access road which is on privately-owned lands. The agreement includes up-grading of the road and installation of three cattleguards.

Sincerely yours,

Jerry W. Long
JERRY W. LONG
Agent

JWL/bl1

lcc: MMS, Albuquerque
BLM, Roswell

3 COPIES TO FLANK

No.1 Rock House Federal

HWY 285

TO ROSWELL

REVISED
EXHIBIT A