

UNITED STATES
DEPARTMENT OF THE INTERIOR
GEOLOGICAL SURVEY

NM OIL CONS
Artesia, NM 88210
MISSION

Form approved.
Budget Bureau No. 42 R1425
30-005-61704

RECEIVED

JUL 15 1982

APPLICATION FOR PERMIT TO DRILL, DEEPEN, OR PLUG BACK

1a. TYPE OF WORK
DRILL ☒ DEEPEN ☐ PLUG BACK ☐

b. TYPE OF WELL
OIL WELL ☒ GAS WELL ☐ OTHER ☐
SINGLE ZONE ☒ MULTIPLE ZONE ☐

2. NAME OF OPERATOR (Ph, 915-682-5241)

GREAT WESTERN DRILLING COMPANY ✓

3. ADDRESS OF OPERATOR

P. O. Box 1659, Midland, Texas 79702

4. LOCATION OF WELL (Report location clearly and in accordance with any State requirements.)*

At surface 660' FNL & 1980' FWL of Sec. 22-6S-25E

At proposed prod. zone
same

14. DISTANCE IN MILES AND DIRECTION FROM NEAREST TOWN OR POST OFFICE*

26 air miles north-northeast of Roswell, N. M.

15. DISTANCE FROM PROPOSED*
LOCATION TO NEAREST
PROPERTY OR LEASE LINE, FT.
(Also to nearest drlg. unit line, if any)

660'

16. NO. OF ACRES IN LEASE

1759.06

18. DISTANCE FROM PROPOSED LOCATION*
TO NEAREST WELL, DRILLING, COMPLETED,
OR APPLIED FOR, ON THIS LEASE, FT.

1/2 mile

19. PROPOSED DEPTH

4300' Abo

17. NO. OF ACRES ASSIGNED
TO THIS WELL

160

20. ROTARY OR CABLE TOOLS

Rotary

21. ELEVATIONS (Show whether DF, RT, GR, etc.)

3926' G.L.

22. APPROX. DATE WORK WILL START*

July 11, 1982

23. PROPOSED CASING AND CEMENTING PROGRAM

| SIZE OF HOLE | SIZE OF CASING | WEIGHT PER FOOT | SETTING DEPTH | QUANTITY OF CEMENT |
|----------------|----------------|-----------------|---------------|-------------------------|
| 14 3/4" | 10 3/4" | 32.75# | 940' | Sufficient to circulate |
| 9 7/8 & 7 7/8" | 4 1/2" | 9.50# | 4250' | * |

* 9 7/8" hole will be reduced to 7 7/8" at 1870' +/- (200-300' below top of the Glorietta). Production casing will be cemented around the shoe with 250 sacks and staged at 1870' +/- with sufficient cement to circulate or tie back into the 10 3/4" casing. Abo pay zone will be perforated and stimulated as needed.

Attached are: 1. Well Location & Acreage Dedication Plat.
2. Supplemental Drilling Data
3. Surface Use Plan

Gas for this acreage is not dedicated.

RECEIVED
JUN 21 1982

OIL & GAS
U.S. GEOLOGICAL SURVEY

IN ABOVE SPACE DESCRIBE PROPOSED PROGRAM: If proposal is to deepen or plug back, give data on present productive zone and proposed productive zone. If proposal is to drill or deepen directionally, give pertinent data on subsurface locations and measured and true vertical depths. Give blowout preventer program, if any.

24.

SIGNED

James A. Knapp
James A. Knapp

TITLE

Agent

DATE

June 16, 1982

(This space for Federal or State office use)

PERMIT NO.

(Orig. Sgd.) GEORGE H. STEWART

APPROVAL DATE

APPROVED BY

JAMES A. GILMAN
DISTRICT SUPERVISOR

TITLE

DATE

Partial ID-I
API & NL Bank
7-23-82

STATE OF NEW MEXICO
ENERGY AND MINERALS DEPARTMENT

P. O. BOX 2008
SANTA FE, NEW MEXICO 87501

All distances must be from the outer boundaries of the Section.

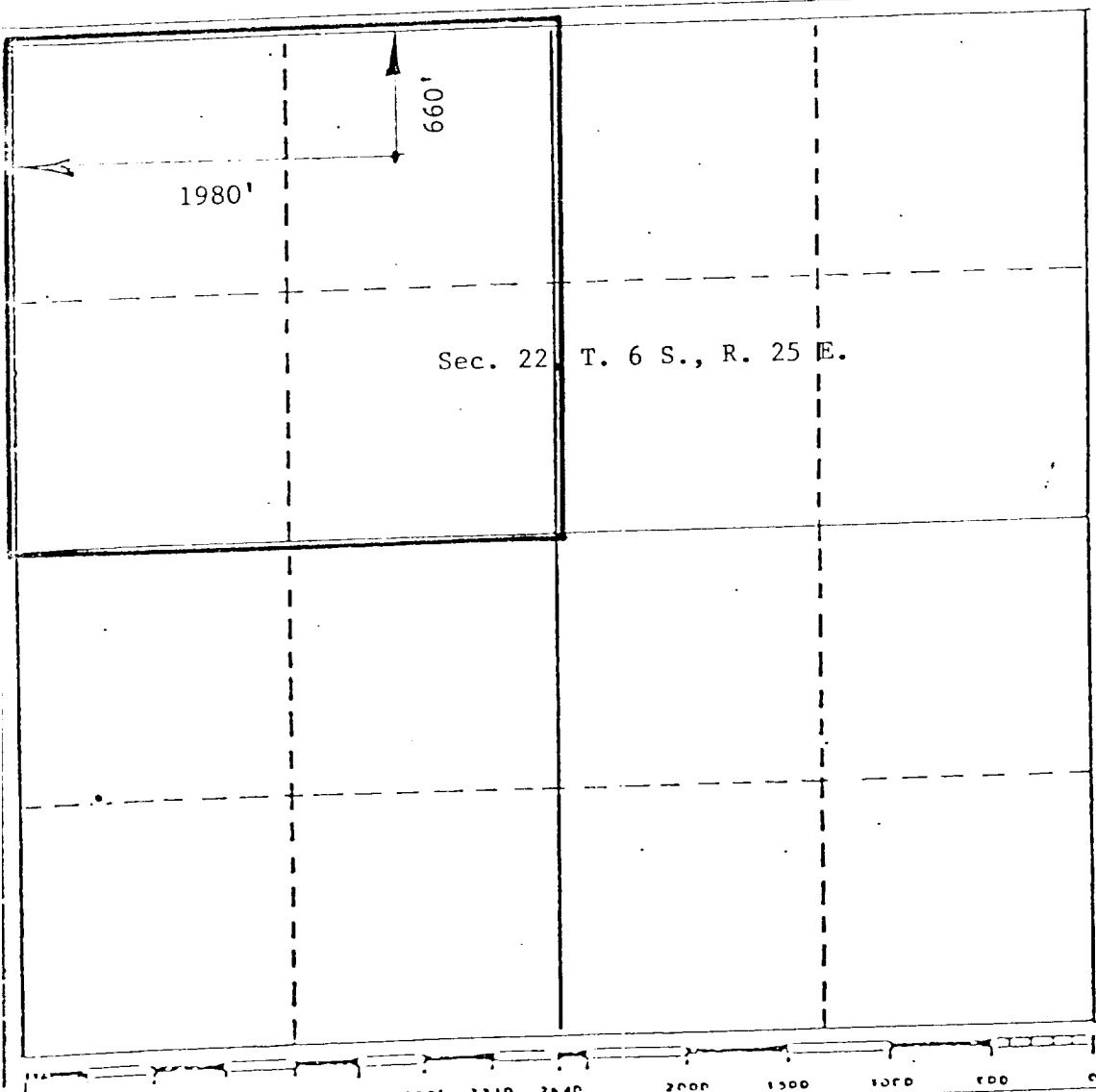
| | | | | |
|---|----------------------------|------------------------|-------------------------|---------------------------------|
| Operator Great Western Drilling Co. | | Lease Quail Federal | | Well No. #5 |
| Drill Letter C | Section 22 | Township 6S | Range 25E | County Chaves |
| Actual Postage Location of Well: 660 feet from the North line and 1980 feet from the West line | | | | |
| Ground Level Elev. 3926 | Producing Formation Abo | | Pool Pecos Slope Abo | Dedicated Acreage: 160 Acres |

1. Outline the acreage dedicated to the subject well by colored pencil or hatchure marks on the plat below.
2. If more than one lease is dedicated to the well, outline each and identify the ownership thereof (both as to working interest and royalty).
3. If more than one lease of different ownership is dedicated to the well, have the interests of all owners been consolidated by communitization, unitization, force-pooling, etc?

☐ Yes ☐ No If answer is "yes," type of consolidation _____

If answer is "no," list the owners and tract descriptions which have actually been consolidated. (Use reverse side of this form if necessary.) _____

No allowable will be assigned to the well until all interests have been consolidated (by communitization, unitization, forced-pooling, or otherwise) or until a non-standard unit, eliminating such interests, has been approved by the Division _____



CERTIFICATION

I hereby certify that the information contained herein is true and complete to the best of my knowledge and belief.

Name: James A. Knauf

Position: Agent

Company: GREAT WESTERN DRILLING CO.

Date: June 11, 1982

I hereby certify that the well location shown on this plat was plotted from field notes of actual surveys made by me or under my supervision, and that the same is true and correct to the best of my knowledge and belief.

Date Surveyed: 5-12-82

Registered Professional Engineer and/or Land Surveyor

John D. Jaquess

Certificate No. 6290

SUPPLEMENTAL DRILLING DATA

GREAT WESTERN DRILLING COMPANY
WELL #5 QUAIL FEDERAL
NE $\frac{1}{4}$ NW $\frac{1}{4}$ SEC. 22-6S-25E
CHAVES COUNTY, NEW MEXICO

1. SURFACE FORMATION: Artesia Group of Permian Age.

2. ESTIMATED TOPS OF GEOLOGIC MARKERS:

| | | | |
|------------|-------|------|-------|
| San Andres | 595' | Tubb | 3035' |
| Glorietta | 1615' | Abo | 3670' |

3. ANTICIPATED POROSITY ZONES:

| | |
|-------|-------------------|
| Water | 50-150', 595-680' |
| Oil | 1015-1230' |
| Gas | 3710-4070' |

4. CASING DESIGN:

| <u>Size</u> | <u>Interval</u> | <u>Weight</u> | <u>Grade</u> | <u>Joint</u> | <u>Condition</u> |
|-------------|-----------------|---------------|--------------|--------------|------------------|
| 10 3/4" | 0 - 940' | 32.75# | K-55 | STC | New |
| 4 1/2" | 0 - 4250' | 9.5 # | K-55 | STC | New |

5. SURFACE CONTROL EQUIPMENT: A double ram-type BOP will be used.

6. CIRCULATING MEDIUM: Fresh water mud conditioned as necessary for control of viscosity and water loss.

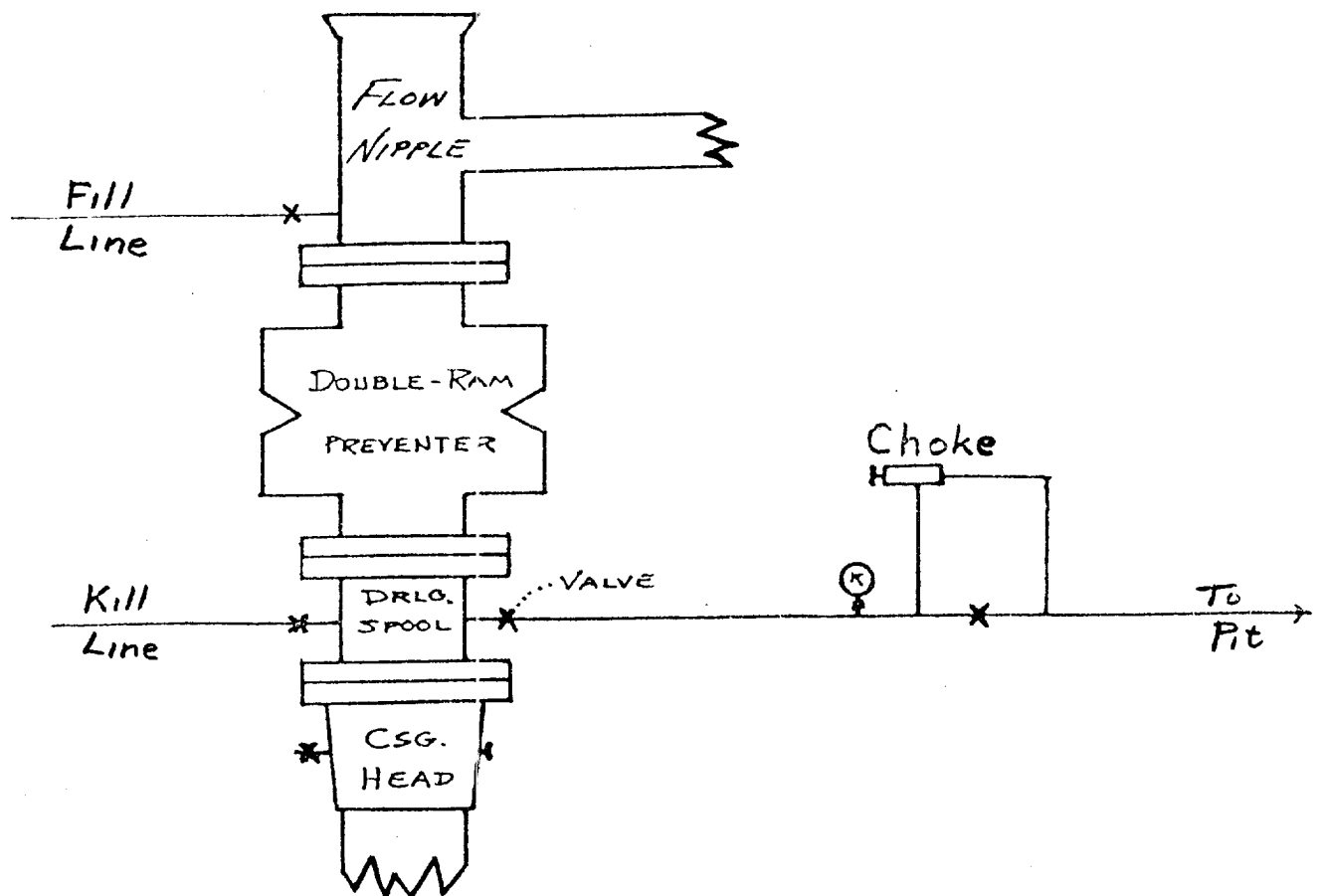
7. AUXILIARY EQUIPMENT: A full opening safety valve will be kept on rig floor in open position at all times.

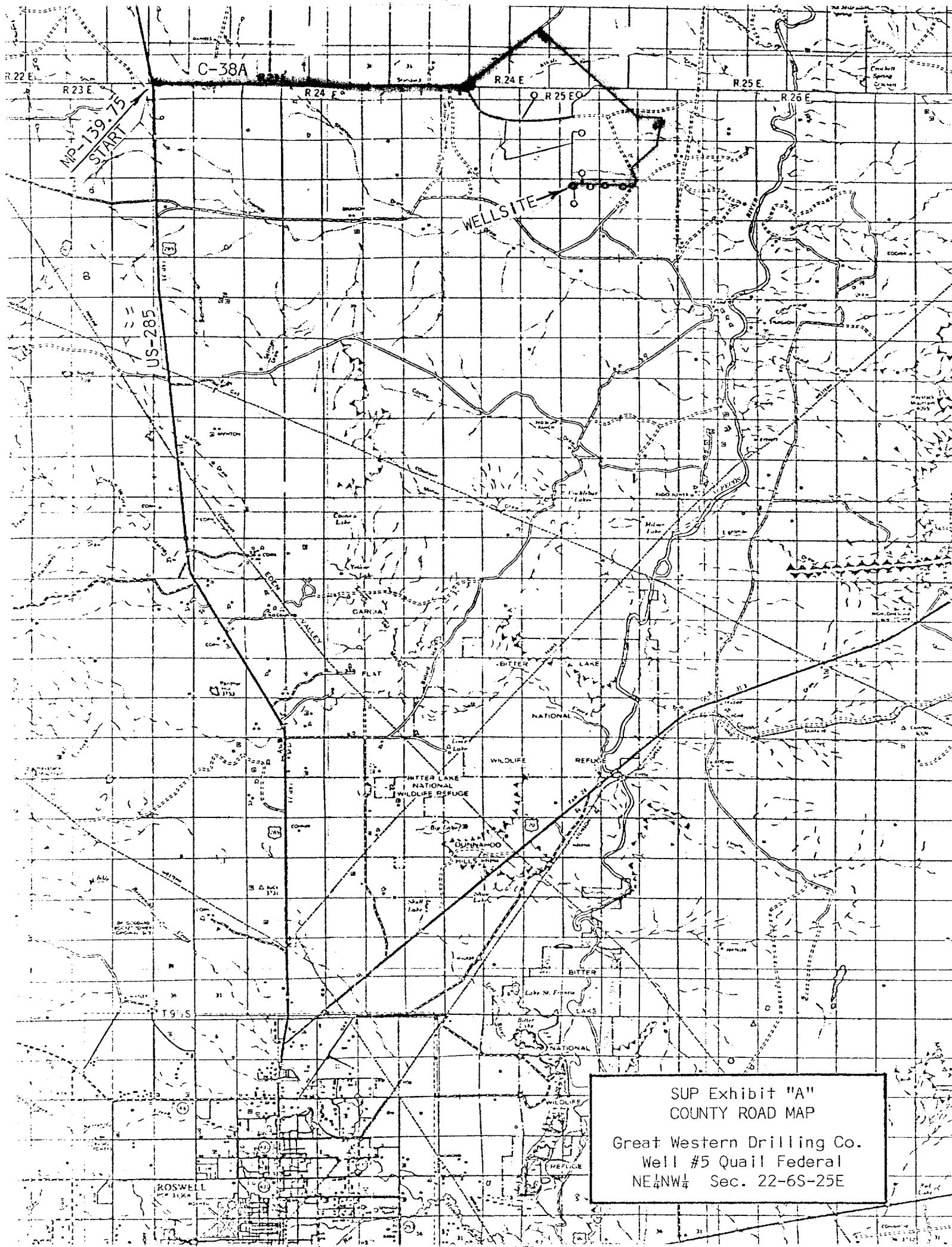
8. LOGGING PROGRAM: Compensated Neutron/Formation Density Log (O-TD).

9. ABNORMAL PRESSURES, TEMPERATURES OR GASES: None anticipated.

10. ANTICIPATED STARTING DATE: It is planned that operations will commence about July 11, 1982. Duration of drilling, testing, and completion operations should be 2 to 5 weeks.

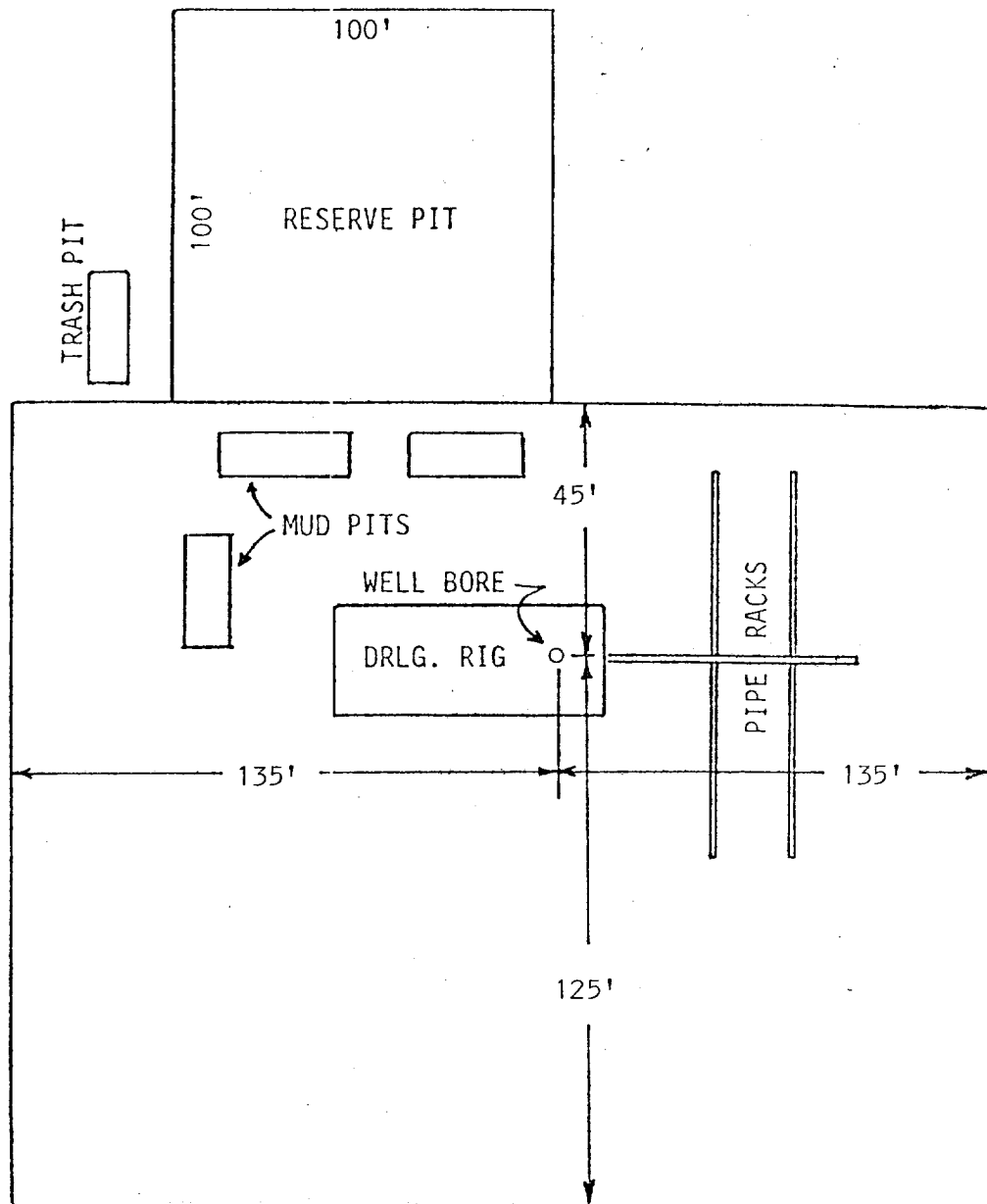
B O P & CHOKE MANIFOLD





SUP Exhibit "A"
COUNTY ROAD MAP

Great Western Drilling Co.
Well #5 Quail Federal
NE $\frac{1}{4}$ NW $\frac{1}{4}$ Sec. 22-6S-25E



SUP Exhibit "D"
SKETCH OF WELL PAD

Great Western Drilling Co.
Well #5 Quail Federal
NE $\frac{1}{4}$ NW $\frac{1}{4}$ Sec. 22-6S-25E