

Drawer DD

Artesia, NM 88210

UNITED STATES
DEPARTMENT OF THE INTERIOR
GEOLOGICAL SURVEY

SUBMIT IN TRIPLICATE*
(Other instructions on
reverse side)

Form approved.
Budget Bureau No. 42-B1425.

38-005-61381

APPLICATION FOR PERMIT TO DRILL, DEEPEN, OR PLUG BACK

1a. TYPE OF WORK

DRILL ☒

DEEPEN ☐

PLUG BACK ☐

b. TYPE OF WELL

OIL
WELL ☐

GAS
WELL ☒

OTHER

SINGLE
ZONE ☒

MULTIPLE
ZONE ☐

2. NAME OF OPERATOR

McKay Oil Corporation

3. ADDRESS OF OPERATOR

P.O. Box 2014, Roswell, New Mexico 88201

4. LOCATION OF WELL (Report location clearly and in accordance with any State requirements.)
At surface

1980FWL-1980 FSL
At proposed prod. zone

14. DISTANCE IN MILES AND DIRECTION FROM NEAREST TOWN OR POST OFFICE

28 Miles Northwest of Roswell, NM

15. DISTANCE FROM PROPOSED*

LOCATION TO NEAREST
PROPERTY OR LEASE LINE, FT.
(Also to nearest drlg. unit line, if any)

1980

16. NO. OF ACRES IN LEASE

1598.64

18. DISTANCE FROM PROPOSED LOCATION*
TO NEAREST WELL, DRILLING, COMPLETED,
OR APPLIED FOR, ON THIS LEASE, FT.

none

19. PROPOSED DEPTH

3,400'

17. NO. OF ACRES ASSIGNED
TO THIS WELL

160.0

20. ROTARY OR CABLE TOOLS

Rotary

21. ELEVATIONS (Show whether DF, RT, GR, etc.)

4243GL

22. APPROX. DATE WORK WILL START*

ASAP

23. PROPOSED CASING AND CEMENTING PROGRAM

SIZE OF HOLE	SIZE OF CASING	WEIGHT PER FOOT	SETTING DEPTH	QUANTITY OF CEMENT
12 1/4"	8 5/8"	24.0 J-55	900'	850 cf cement circulated
7 7/8"	4 1/2"	9.5 J-55	TD	1200 cf cement including
				480 cf to tie in 4 1/2" to
				8 5/8" from 1500' to 800'.

We propose to drill and test the Abo formation. Approximately 900' of surface casing will be set and cemented to surface. If commercial, 4 1/2" production casing will be run and cemented with adequated cover, perforated and stimulated as needed for production.

MUD PROGRAM: See Supplemental Drilling Data Which is Attached.

BOP PROGRAM: BOP will be installed on 8 5/8" casing and tested daily.

Gas is not dedicated.

IN ABOVE SPACE DESCRIBE PROPOSED PROGRAM: If proposal is to deepen or plug back, give data on present productive zone and proposed new productive zone. If proposal is to drill or deepen directionally, give pertinent data on subsurface locations and measured and true vertical depths. Give blowout preventer program, if any.

24. SIGNED [Signature] TITLE Landman DATE 12-16-86
(This space for Federal or State office use)

PERMIT NO. _____ APPROVAL DATE _____

APPROVED BY S/Phil Kirk TITLE Area Manager DATE DEC 22 1986
CONDITIONS OF APPROVAL, IF ANY:

APPROVAL OF THIS APPLICATION DOES NOT WARRANT OR
CERTIFY THAT THE APPLICANT HOLDS LEGAL OR EQUITABLE
TITLE TO THOSE RIGHTS IN THE SUBJECT LEASE WHICH WOULD
ENTITLE THE APPLICANT TO CONDUCT OPERATIONS THEREON.

Posted ID-1
NL, API
1-9-87

STATE OF NEW MEXICO
ENERGY AND MINERALS DEPARTMENT

SANTA FE, NEW MEXICO 87501

Form C-102
Revised 10-1-71

All Distances must be from the outer boundaries of the Section.

Operator McKay Oil Corp. ✓		Lease Inexco Federal		Well No. 1
Unit Lessee K	Section 30	Township 5 South	Range 22 East	County Chaves
Actual Footage Location of Well 1980 feet from the South line and 1980 feet from the West line				
Ground Level Elev. 4243	Producing Formation ABO	Pool Und. W. Pecos Slope Abo		Dedicated Acreage 160 Acres

1. Outline the acreage dedicated to the subject well by colored pencil or hatchure marks on the plot below.

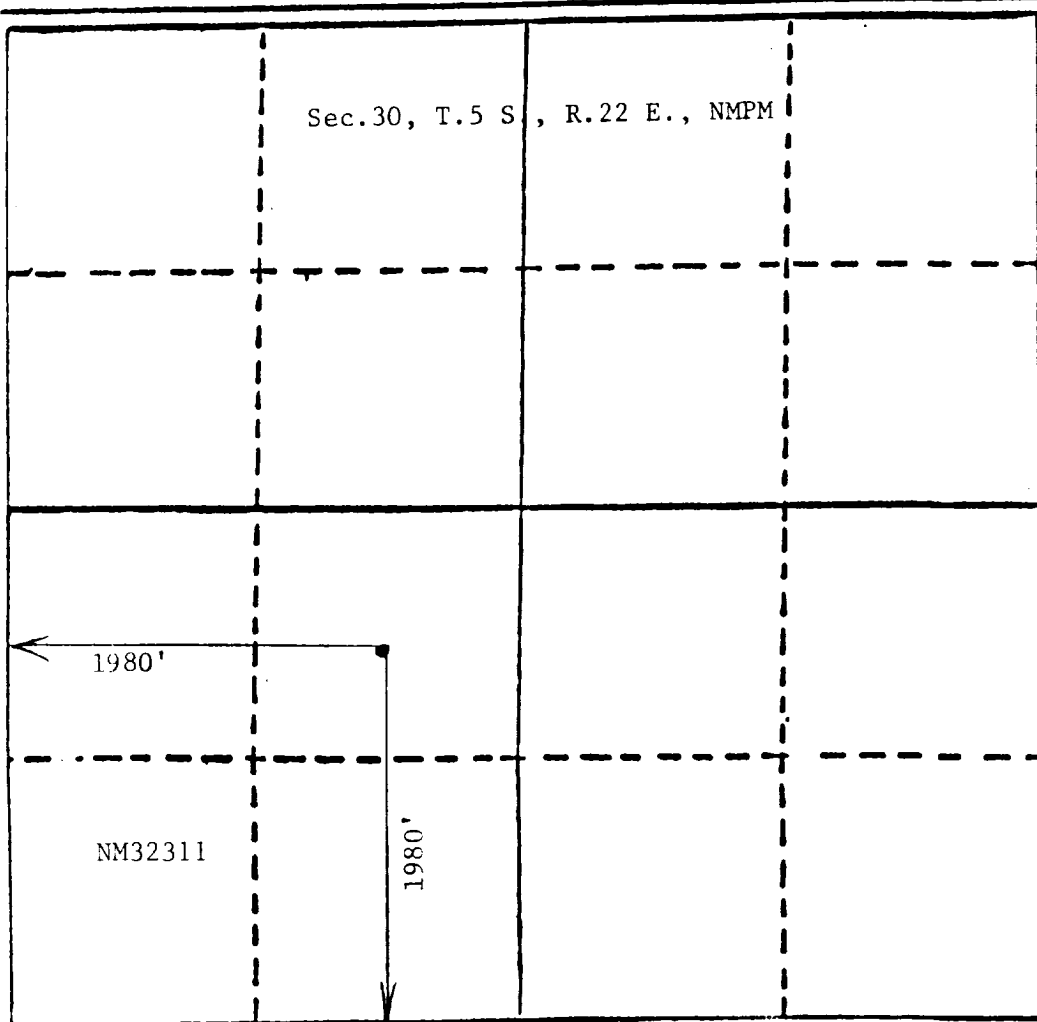
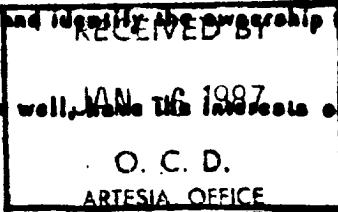
2. If more than one lease is dedicated to the well, outline each and identify the ownership thereof (both as to working interest and royalty).

3. If more than one lease of different ownership is dedicated to the well, have the interests of all owners been consolidated by communitization, unitization, force-pooling, etc?

☐ Yes ☐ No - If answer is "yes;" type of consolidation

If answer is "no;" list the owners and tract descriptions which have actually been consolidated. (Use reverse side of this form if necessary.)

No allowable will be assigned to the well until all interests have been consolidated (by communitization, unitization, forced-pooling, or otherwise) or until a non-standard unit, eliminating such interests, has been approved by the Division



CERTIFICATION

I hereby certify that the information contained herein is true and complete to the best of my knowledge and belief.

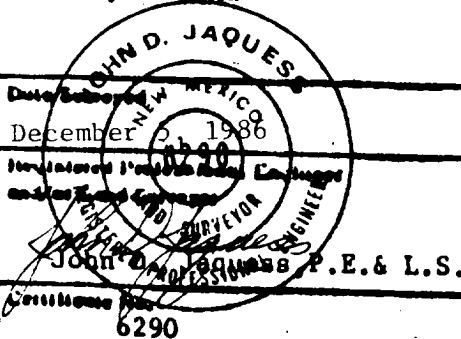
Name
Sam L. Shackelford

Position
Agent

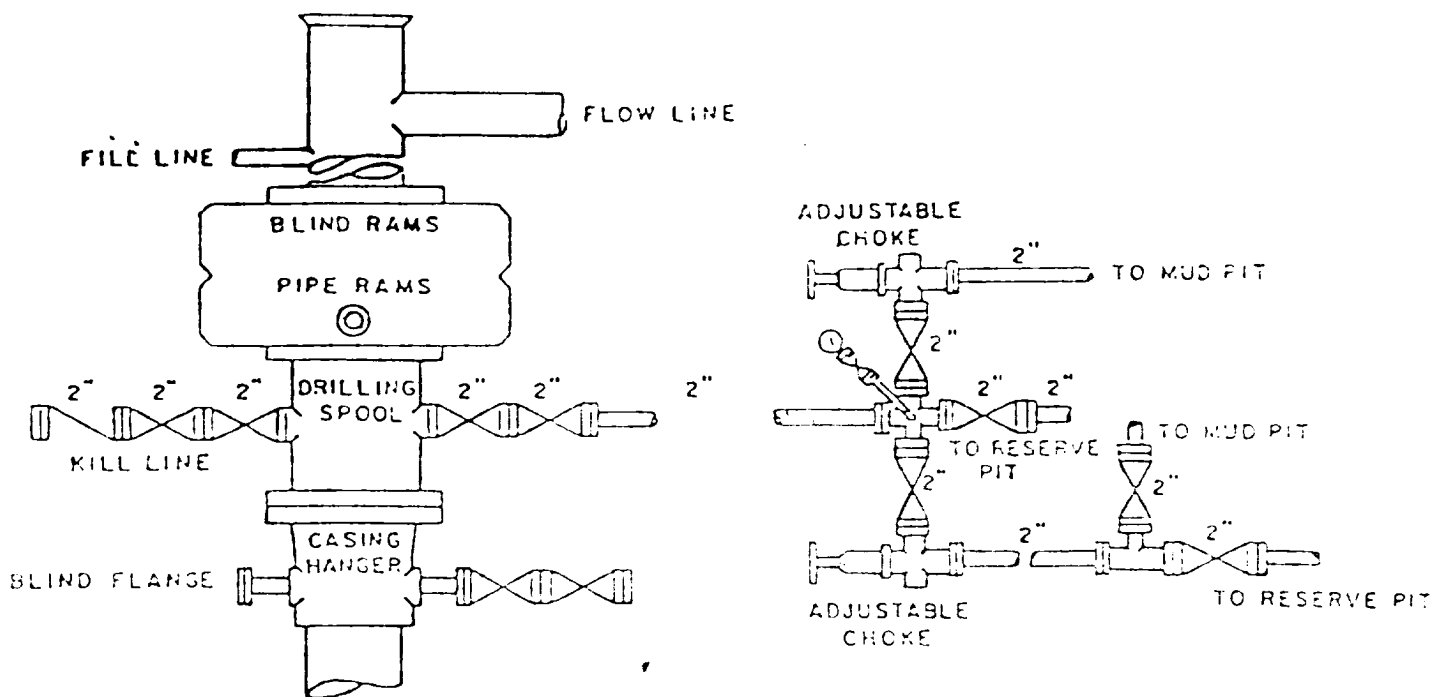
Company
McKay Oil Corp.

Date
12-15-86

I hereby certify that the well location shown on this plot was plotted from field notes of actual surveys made by me or under my supervision, and that the same is true and correct to the best of my knowledge and belief.



MCKAY OIL CORPORATION
 Inexco Federal #1
 NE $\frac{1}{4}$ SW $\frac{1}{4}$ Sec. 30-5S-22E
 Chaves County, New Mexico



BOP DIAGRAM

3000# Working Pressure
 Rams Operated Daily

SUPPLEMENTAL DRILLING DATA

McKAY OIL CORPORATION
Inexco Federal #1
NE1/4SW1/4 Sec. 30-5S-22E
Chaves County, N.M.

NM 32311



The following items supplement Form 9-331C in accordance with instructions contained in NTL-6.

1. SURFACE FORMATION: San Andres
2. ESTIMATED TOPS OF GEOLOGIC MARKERS:

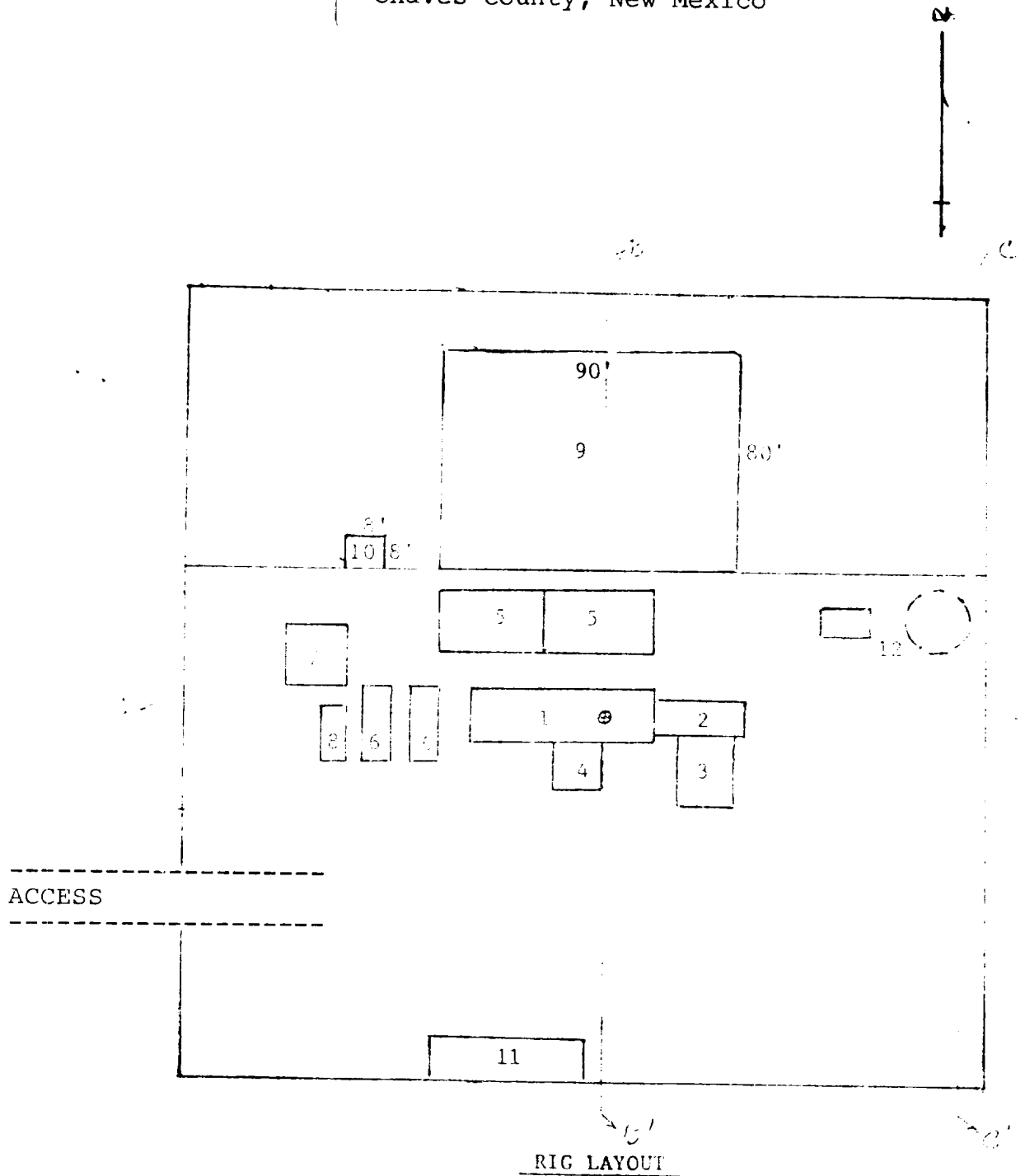
Yeso	- 794'
Tubb	- 2324'
Abo	- 3004'
3. ESTIMATED DEPTHS TO WATER, OIL OR GAS FORMATION:

Fresh water	- In surface formations above 600'
Gas	- In Abo formation below 3004'
4. PROPOSED CASING PROGRAM: See Form 9-331C
5. PRESSURE CONTROL EQUIPMENT: Blowout preventer stack will consist of at least a double-ram blowout preventer rated to 3000#WP. A sketch of the BOP is attached.
6. CIRCULATING MEDIUM:

0'- 600'	Lime and gel, spud mud, viscosity 32 to 34 seconds.
600'- 2904	Fresh water
2904'- TD	Start mudding up at 2904'; viscosity 36 to 38 seconds; water loss 10 cc or less; 3-5% Diesel; 2 KCL

Mud additives will be used to control water loss.
7. AUXILIARY EQUIPMENT: full-opening drill string safety valve fit the drill string in use, will be kept on the rig floor at all times.

MCKAY OIL CORPORATION
 Inexco Federal #1
 NE $\frac{1}{4}$ SW $\frac{1}{4}$ Sec. 30-5S-22E
 Chaves County, New Mexico



- | | |
|-----------------|---------------------------|
| 1. Substructure | 7. Water Tank |
| 2. Catwalk | 8. Light Plant |
| 3. Pipe Rack | 9. Reserve Pit |
| 4. Doghouse | 10. Trash Pit |
| 5. Mud Pits | 11. Trailer House |
| 6. Mud Pumps | 12. Production Facilities |