

UNITED STATES
DEPARTMENT OF THE INTERIOR
BUREAU OF LAND MANAGEMENT
NEW OIL Cons. Commission
Drawer DD

ARTASIA, NM 88210
APPLICATION FOR PERMIT TO DRILL, DEEPEN, OR PLUG BACK

1a. TYPE OF WORK

DRILL ☒

DEEPEN ☐

PLUG BACK ☐

b. TYPE OF WELL

OIL WELL ☐

GAS WELL ☒

OTHER

SINGLE ZONE

MULTI ZONE ☐

2. NAME OF OPERATOR

McKay Oil Corporation

3. ADDRESS OF OPERATOR

P.O. Box 2014, Roswell, NM 88202

4. LOCATION OF WELL (Report location clearly and in accordance with any State requirements.)*

At surface

660 FSL - 660 FWL

At proposed prod. zone

"

UT. M

14. DISTANCE IN MILES AND DIRECTION FROM NEAREST TOWN OR POST OFFICE*

Approximately 25 north of Roswell, NM

15. DISTANCE FROM PROPOSED*

LOCATION TO NEAREST PROPERTY OR LEASE LINE, FT.
(Also to nearest drlg. unit line, if any)

660'

16. NO. OF ACRES IN LEASE

2,560.0

17. NO. OF ACRES ASSIGNED TO THIS WELL

160.0

18. DISTANCE FROM PROPOSED LOCATION* TO NEAREST WELL, DRILLING, COMPLETED, OR APPLIED FOR, ON THIS LEASE, FT.

1,320'

19. PROPOSED DEPTH

3,400'

20. ROTARY OR CABLE TOOLS

rotary

21. ELEVATIONS (Show whether DF, RT, GR, etc.)

4231 GL

22. APPROX. DATE WORK WILL START*

Oct. 1, 1993

23.

PROPOSED CASING AND CEMENTING PROGRAM

SIZE OF HOLE	SIZE OF CASING	WEIGHT PER FOOT	SETTING DEPTH	QUANTITY OF CEMENT
12 1/4"	8 5/8"	24 J-55	900+	850 cf cement circulated
7 7/8"	4 1/2"	10.5 J-55	TD	1200 cf cement including
				480 cf to tie in 4 1/2 to
				8 5/8" from 1500' to 800'

We propose to drill and test the Abo Formation. Approximately 900' of surface casing will be set and cemented to surface. If commercial, 4 1/2 production casing will be run and cemented with adequate cover, perforated and stimulated as needed for production.

MUD PROGRAM: See Supplemental Drilling Data which is attached.

BOP PROGRAM: BOP will be installed on 8 5/8" casing and tested daily.

Gas is not dedicated.

IN ABOVE SPACE DESCRIBE PROPOSED PROGRAM: If proposal is to deepen or plug back, give data on present productive zone and proposed new productive zone. If proposal is to drill or deepen directionally, give pertinent data on subsurface locations and measured and true vertical depths. Give blowout preventer program, if any.

24.

SIGNED

S. S. Jeff

TITLE

Agent

DATE

9-1-93

(This space for Federal or State office use)

PERMIT NO.

APPROVAL DATE

APPROVED BY

Sandra L. Allen

TITLE

Area Manager

DATE

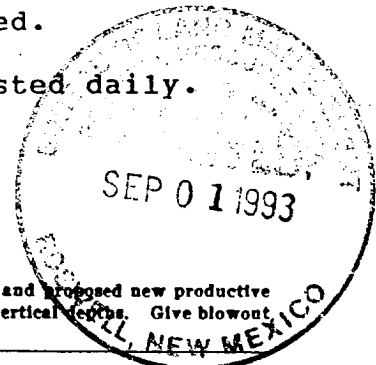
1-18-94

CONDITIONS OF APPROVAL, IF ANY:

PLEASE BE ADVISED THAT THE DEPARTMENT OF THE INTERIOR HAS THE RIGHT TO SUSPEND OR REVOKE THE PERMIT FOR VIOLATION OF THE ACCESS RULES OR FOR NON-PAYMENT OF ADVANCE.

*See Instructions On Reverse Side

18 U.S.C. Section 1001, makes it a crime for any person knowingly and willfully to make to any department or agency of the States any false, fictitious or fraudulent statements or representations as to any matter within its jurisdiction.



10-1
1-24-94
ML:SAH

Submit to Appropriate
District Office
State Lease - 4 copies
Fee Lease - 3 copies

DISTRICT I
P.O. Box 1980, Hobbs, NM 88240

DISTRICT II
P.O. Drawer DD, Artesia, NM 88210

DISTRICT III
1000 Rio Brazos Rd., Aztec, NM 87410

State of New Mexico
Energy, Minerals and Natural Resources Department

OIL CONSERVATION DIVISION

P.O. Box 2088
Santa Fe, New Mexico 87504-2088

Form C-102
Revised 1-1-89

SEP 08 1993

WELL LOCATION AND ACREAGE DEDICATION PLAT

All Distances must be from the outer boundaries of the section

Operator MCKAY OIL CORPORATION			Lease REMMELE FEDERAL COM.		Well No # 15
Unit Letter M	Section 26	Township 6S.	Range 22E.	County CHAVES	
Actual Footage Location of Well: 660 feet from the SOUTH line and 660 feet from the WEST line					
Ground level Elev. 4231	Producing Formation ABO	Pool West Pecos Slope Abo		Dedicated Acreage: 160.0 Acres	

1. Outline the acreage dedicated to the subject well by colored pencil or hatchure marks on the plat below.

2. If more than one lease is dedicated to the well, outline each and identify the ownership thereof (both as to working interest and royalty).

3. If more than one lease of different ownership is dedicated to the well, have the interest of all owners been consolidated by communitization.

unitization, force-pooling, etc.?

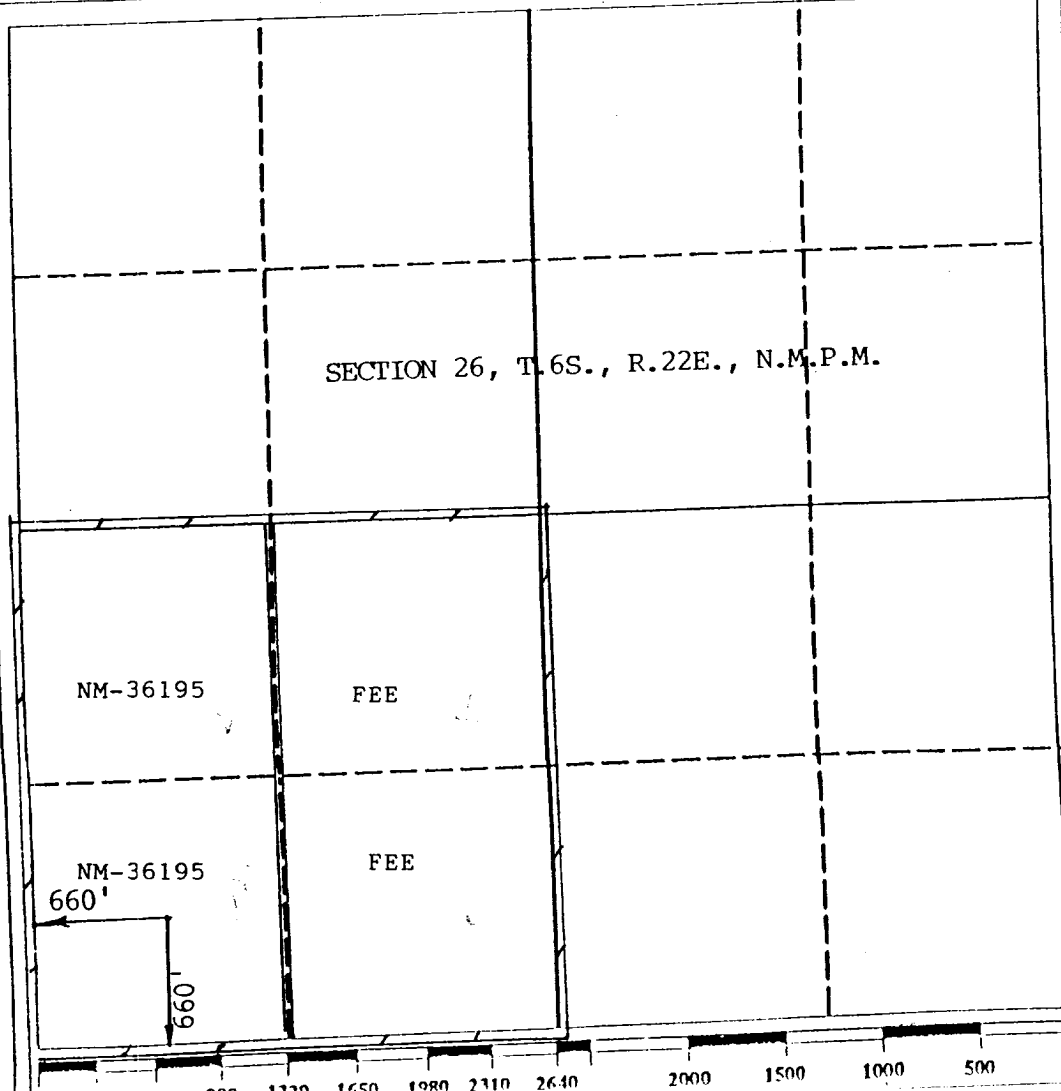
☐ Yes

☐ No

If answer is "yes" type of consolidation

If answer is "no" list the owners and tract descriptions which have actually been consolidated. (Use reverse side of this form if necessary.)

No allowable will be assigned to the well until all interests have been consolidated (by communitization, unitization, forced-pooling, or otherwise) or until a non-standard unit, eliminating such interest, has been approved by the Division.



OPERATOR CERTIFICATION

I hereby certify that the information contained herein is true and complete to the best of my knowledge and belief.

Signature

Printed Name

Sam L. Shackelford

Position

Agent
Company

McKay Oil Corp.

Date

9-1-93

SURVEYOR CERTIFICATION

I hereby certify that the well location shown on this plat was plotted from field notes of actual surveys made by me or under my supervision, and that the same is true and correct to the best of my knowledge and belief.

Date Surveyed

8/12/93

Signature & Seal of
Professional Surveyor

6290

6290

6290

MCKAY622

PERTINENT INFORMATION

For

MCKAY OIL CORPORATION
Remmele Federal Com. #15
SW/4SW/4 of Sec. 26, T-6S, R-22E
Chaves County, New Mexico

LOCATED: 24 air miles Northwest
of Roswell, N.M.

LEASE NUMBER: NM-36195

LEASE ISSUED May 1, 1981

RECORD LESSEE: Sanders Petroleum Corp.

BOND COVERAGE: Lessee's \$25,000 Statewide

AUTHORITY TO OPERATE: Designation of Operator

ACRES IN LEASE: 2,560.0 acres, more or less

SURFACE OWNERSHIP: Fee

OWNER: USA-BLM

POOL RULES: General Statewide Rules

EXHIBITS:

- A. Road and Well Map
- B. Contour Map
- C. Rig Layout
- D. BOP Diagram
- E. Lease Map
- F. Location Topography

SUPPLEMENTAL DRILLING DATA

MCKAY OIL CORPORATION
Remmele Federal Com. #15
SW/4SW/4 of Sec. 26, T-6S, R-22E
Chaves County, New Mexico
NM-36195

The following items supplement Form 9-331C in accordance with instruction contained in NTL-6.

1. SURFACE FORMATION: San Andres
2. ESTIMATED TOPS OF GEOLOGICAL MARKERS:

Yeso	-	745'
Tubb	-	2263'
Abo	-	2953'
3. ESTIMATED DEPTHS TO WATER, OIL OR GAS FORMATION:

Fresh Water	-	In surface formation above 600'
Gas	-	In Abo formation below 2950'
4. PROPOSED CASING PROGRAM: See Form 9-331C
5. PRESSURE CONTROL EQUIPMENT: Blowout preventer will consist of at least a double-ram blowout preventer rated to 2000#WP. A sketch of the BOP is attached.
6. CIRCULATING MEDIUM:

Air Drilling to 100' above the top of the Abo formation. Then mud-up till TD.
7. AUXILIARY EQUIPMENT: Full-opening drill string safety valve fit for the drill string in use, will be kept on the rig floor at all times.
8. TESTING, LOGGING AND CORING PROGRAM:

Samples:	Catch samples from surface to TD.
DST'S:	None
Logging:	GR-CNL, Dual Lateral MSFL from surface to TD.
Coring:	None

9. ABNORMAL PRESSURES, TEMPERATURES OR HYDROGEN SULFIDE:
None anticipated.
10. ANTICIPATED STARTING DATE: October 1, 1993
Drilling should be completed within 60 days.
Completion operations (perforations and stimulation)
will follow drilling operations.

MULTI-POINT SURFACE USE AND OPERATIONS PLAN

MCKAY OIL CORPORATION
Remmele Federal Com. #15
SW/4SW/4 of Sec. 26, T-6S, R-22E
Chaves County, New Mexico
NM-36195



This plan is submitted with the application for permit to Drill the above described well. The purpose of the plan is to describe the location of the proposed well, the proposed construction activities and operations plan, the magnitude of necessary surface disturbance involved, and the procedures to be followed in rehabilitating the surface after completion of the operation so that a complete appraisal can be made of the environmental effects associated with the operation.

1. EXISTING ROADS:

- A. Exhibit "A" is a portion of a road map showing the location of the proposed well as staked. The well is approximately 25 miles North of Roswell, N.M.
- B. Directions: Heading North out of Roswell, New Mexico on U.S. 285 for approximately 23 miles and turn left on county road just before mile marker 137 (Cottonwood Road). Go approximately 5 miles to McKnight ranch house, just past ranch house and Macho Draw crossing go south for approximately 3,000 feet to gravel pit, then West for 5,000 feet to fork in the road, staying right, head West for 1.3 miles to the pipeline road, go right for 700 feet to entrance to location.

2. PLANNED ACCESS ROAD:

- A. Length and Width: Less than 300' of new access will be needed. 14 feet wide.
- B. Surfacing Materials: Sand, gravel and caliche where needed.
- C. Turnouts: none
- D. Maximum Grade: No more than 2%.
- E. Drainage Design: Road will have drainage ditches on both sides and a crowned top, with culverts and/or low water crossings as necessary.

- F. Culverts: None.
- G. Cut and Fill: Less than 5 feet.
- H. Gates, Cattleguards: None
- I. Top Soil: Will be stockpiled for future reclamation.
3. LOCATION OF EXISTING WELLS:
- A. A map indicating the location of adjacent wells is attached.
4. LOCATION OF EXISTING AND/OR PROPOSED FACILITIES:
- A. See Exhibit "A" for location of existing lease wells. If the well is commercial, production facilities and tank battery will be constructed.
- B. Cuts and Fills: Less than 5' of cut and fill will be required for the pad size of 125' x 125'. (see Exhibit "F")
- C. Top Soil: Any top soil which can sustain plant vegetation will be bladed and piled for future rehabilitation.
5. LOCATION AND TYPE AF WATER SUPPLY:
- A. Water will be purchased from a commercial source located on the east side of the of highway 285 at the Cottonwood Road turnoff and trucked to the location over existing and above proposed access roads.
6. SOURCE OF CONSTRUCTION MATERIALS:
- A. Private pit located in the SW/4SE/4 Sec. 26-6S-22E.
7. METHODS OF HANDLING WASTE DISPOSAL:
- A. Drill cuttings will be disposed of in the drilling pits.
- B. Drilling fluids will be allowed to evaporate in the drilling pits until the pits are dry.
- C. Water produced during test will be disposed of in the drilling pits. Oil produced during tests will be stored in test tanks until sold.

- D. Current laws and regulations pertaining to the disposal of human waste will be complied with.
 - E. Trash, waste paper, garbage, and junk will be buried in a separate trash pit and covered with a minimum of 24 inches of dirt or deposited in an approved sanitary landfill. All waste material will be contained by a netted container to prevent scattering by the wind. Location of the trash pit is shown on Exhibit "C".
 - F. All trash and debris will be buried or removed from the well site within 30 days after finishing drilling and/or completion operations.
 - G. The following is a list of Hazardous Materials that may be used during operations - Gasoline, New & Used Oil, Diesel, Hydrochloric acid, A-2(corrosion inhibitor), liquid citric(iron sequestrant), NE-17(non-emulsifier), CL-33(clay stabilizer), CL-55C (liquid KCL), Breaker E (water gel breaker), Class C Cement, Flocele, Calcium Chloride, Gilsonite(Gel), Bentonite(Gel), Poz Mix "A", Salt, Halad-322. All of the above materials will be contained in a manner that is considered by the BLM as environmentally safe. Upon completion of the well all of these materials will be taken from the location and disposed of in accordance with applicable local, state & federal Laws. (This includes used oil)
8. ANCILLARY FACILITIES:
- A. None necessary
9. WELL SITE LAYOUT:
- A. Exhibit "C" indicates the relation location and dimensions of the well pad, mud pits, reserve pit and major rig equipment.
 - B. The location slopes very slightly to the south.
 - C. The reserve pit will be lined with plastic to prevent loss of water.
10. PLANS FOR RESTORATION OF THE SURFACE:
- A. After completion of drilling and/or completion operations, all equipment and other material not needed for operations will be removed. Pits will

be filled and the location cleaned of all trash and junk to leave the well site in an aesthetically pleasing condition as possible.

- B. Any unguarded pits containing fluids will be fenced until they are filled.
- C. If the well is non-productive or abandoned, the disturbed area will be rehabilitated using the preserved soil mentioned in 2. I. and 4. C.

11. OTHER INFORMATION:

A. Topography: The topography is a gradual slope to the southwest in the vicinity of the access road and southwest in the vicinity of the drill pad. Regional slope is southwest toward the China Draw which is approximately 2300' from the location.

B. Soil: Sandy loam with limestone outcropping.

C. Flora and Fauna: The flora consists of typical desert vegetation, such as yucca, cactus and various grasses. Fauna consists of desert wildlife such as coyotes, rodents, snakes, deer and antelope.

D. Ponds or Streams: China Draw is about 2300' south of the proposed location.

E. Residences and other Structures: The China Draw Well is approximately 2000' southwest of this location.

F. Archaeological, Historical and Other Cultural Sites:
An Archaeologist from Roswell, NM (A.S.C. Co.) is in the process of checking this site and access road.

G. Land Use: Grazing

H. Surface Ownership: Ina Lee Corn - 625-2280

12. OPERATOR'S REPRESENTATIVE:

Gary Richburg
Roswell, New Mexico
(505) 623-4735

13. CERTIFICATION:

I hereby certify that I, or persons under my direct supervision, have inspected the proposed

drill site and access route; that I am familiar with the conditions which presently exists; that the statements made in this plan are, to the best of my knowledge true and correct; that the work associated with the operations proposed herein will be performed by MCKAY OIL CORPORATION and its sub-contractors in conformity with this plan and the terms and conditions under which it is approved. This statement is subject to provisions of 18 USC 1001 for the filing of a false statement.

9-1-97
DATE:

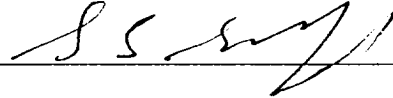


EXHIBIT A

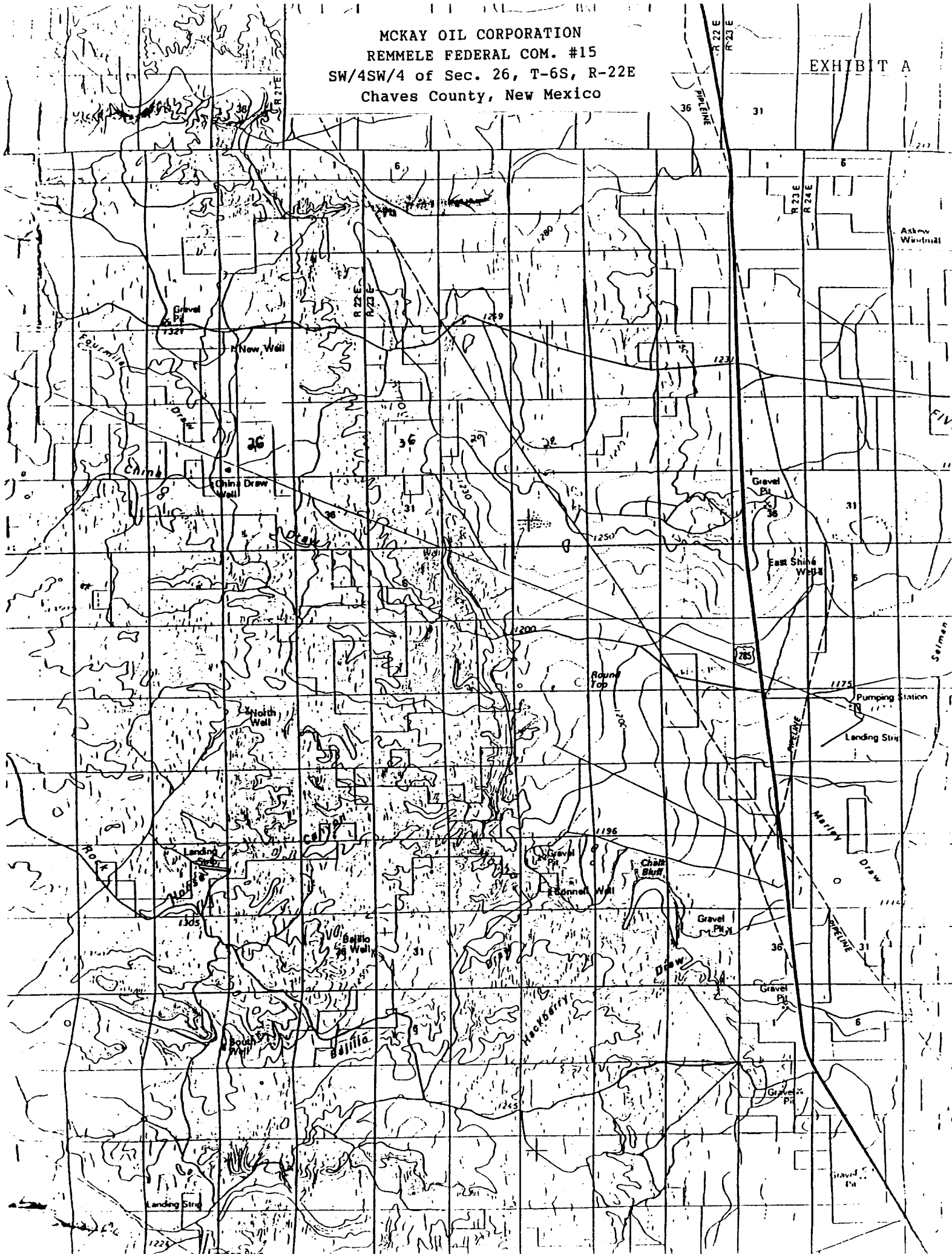
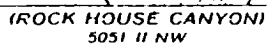
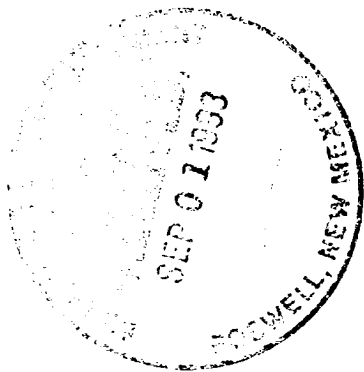


EXHIBIT: F

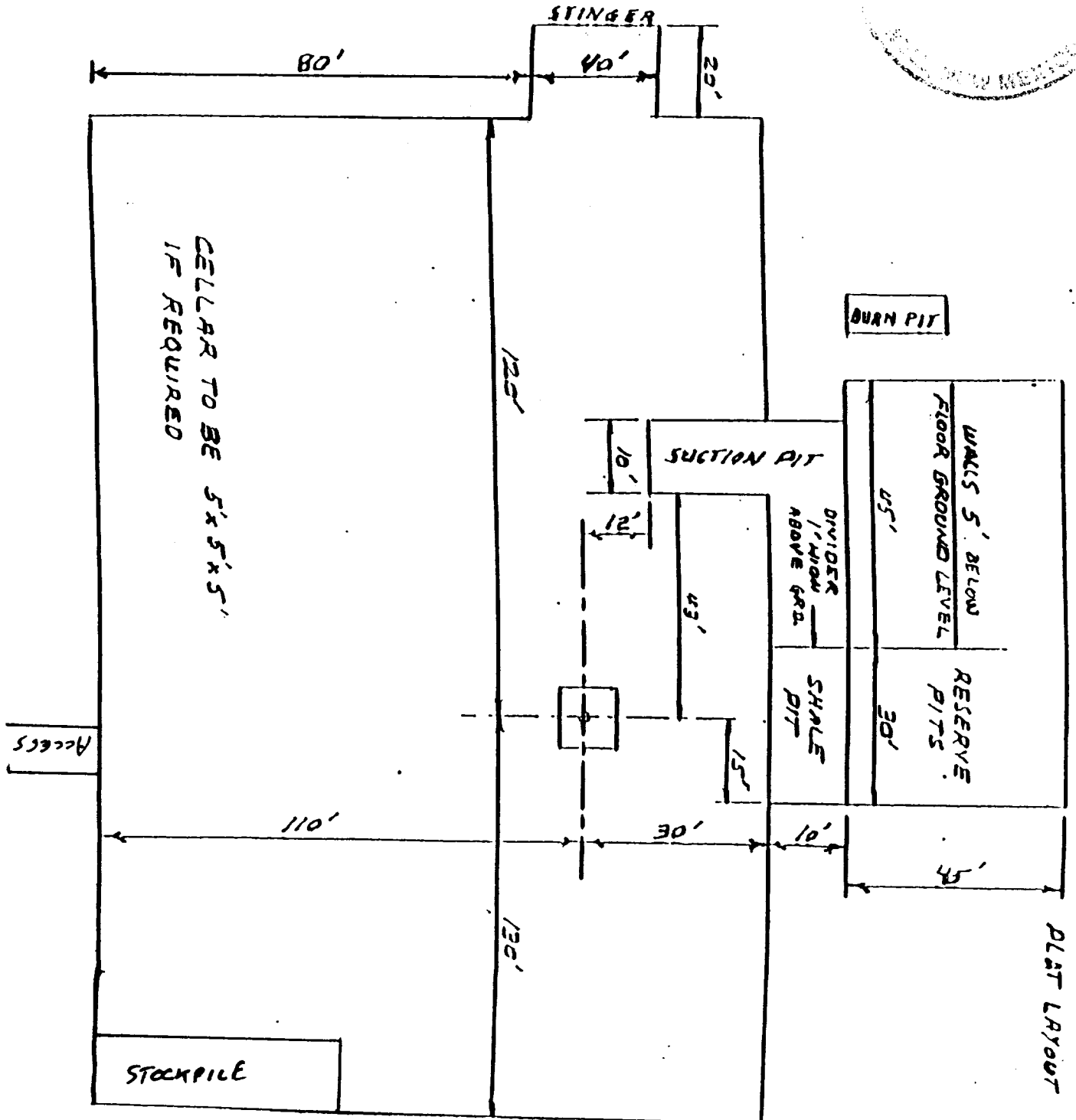
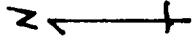


SCALE 1:24 000

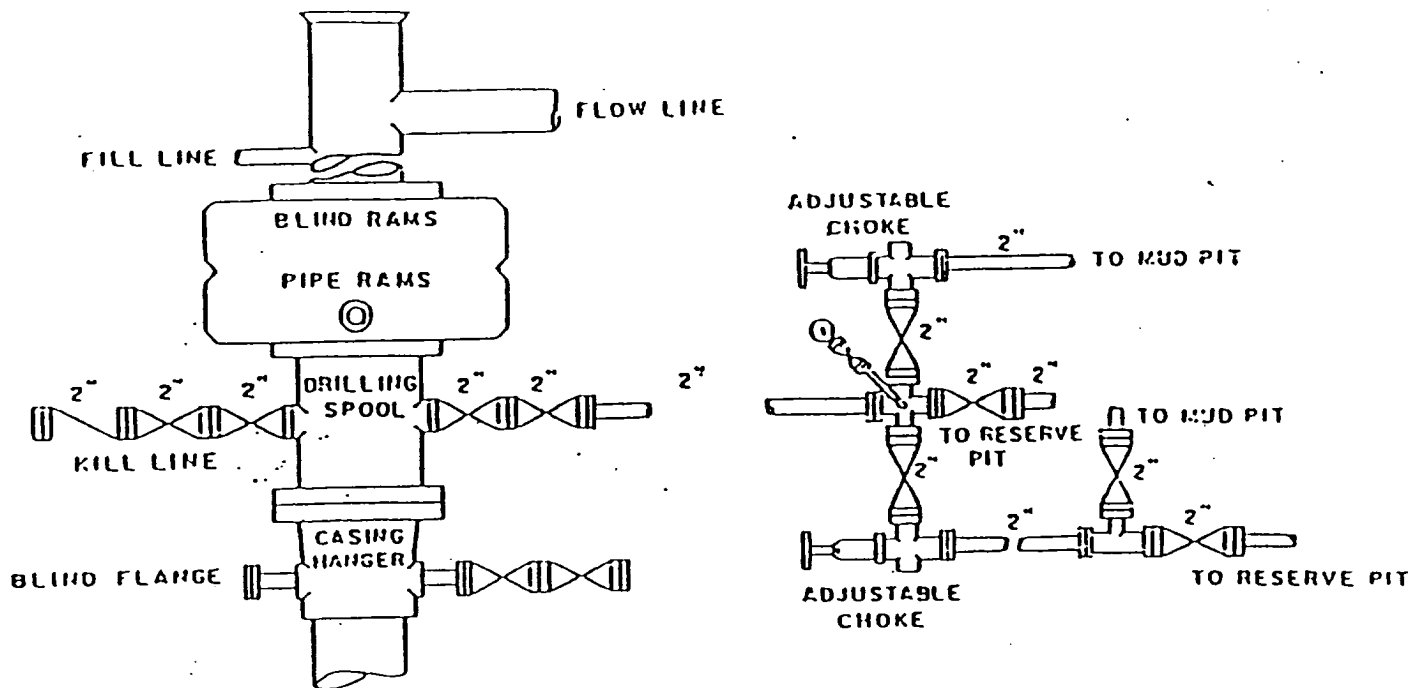


MCKAY OIL CORPORATION
REMMELE FEDERAL COM. #15
SW/4SW/4 of Sec. 26, T-6S, R-22E
Chaves County, New Mexico

EXHIBIT C



MCKAY OIL CORPORATION
 REMMELE FEDERAL COM. #15
 SW/4SW/4 of Sec. 26, T-6S, R-22E
 Chaves County, New Mexico



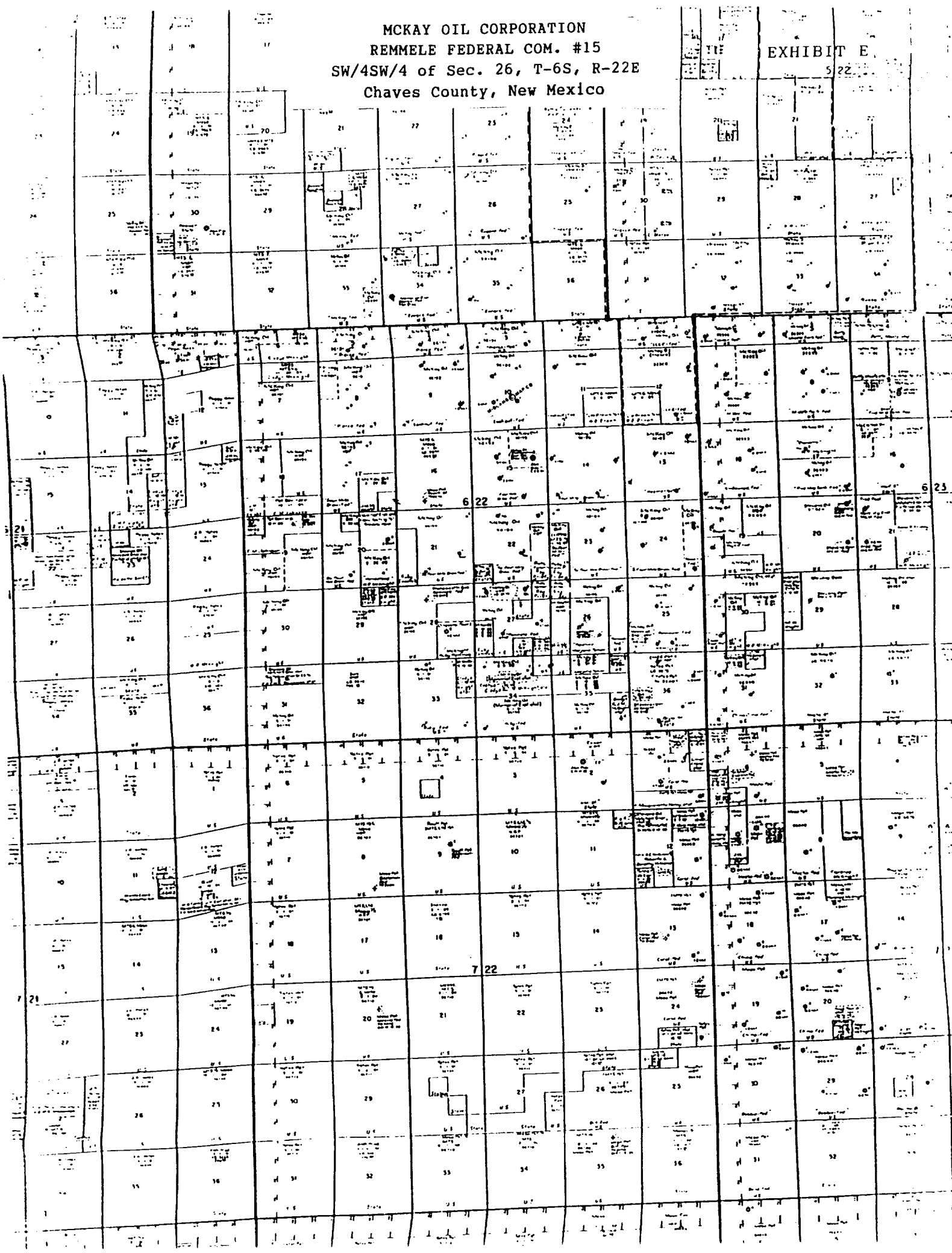
BOP DIAGRAM

2000# Working Pressure
 Rams Operated Daily

MCKAY OIL CORPORATION
REMMELE FEDERAL COM. #15
SW/4SW/4 of Sec. 26, T-6S, R-22E
Chaves County, New Mexico

EXHIBIT E

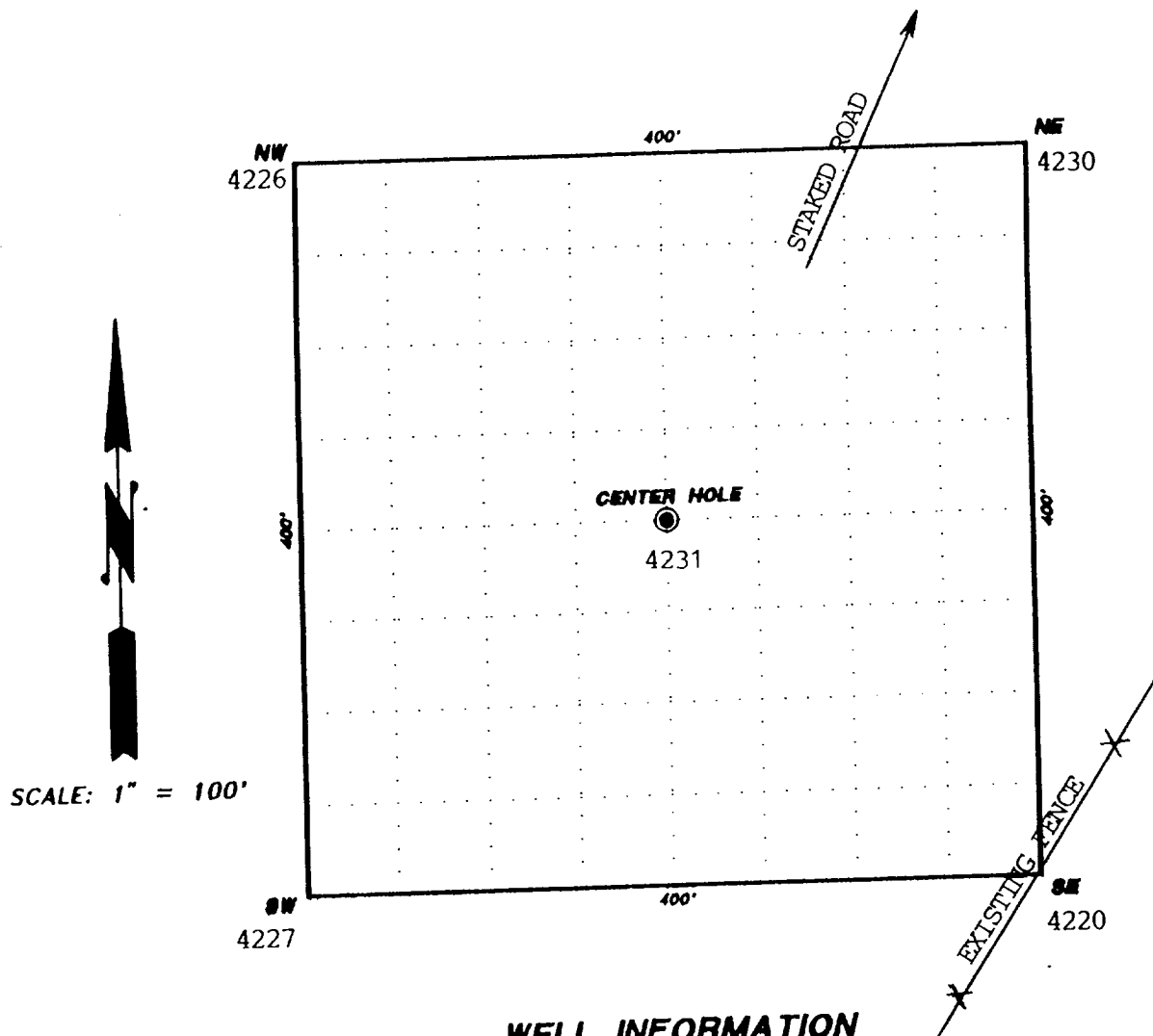
522



GRID ELEVATIONS

JOHN D. JAGUES & ASSOCIATES

CONSULTING ENGINEERS



WELL INFORMATION

REMMELE FEDERAL COM. #15
660 FSL, 660 FWL
SECTION 26, T.6S., R.22E., N.M.P.M.