

UNITED STATES
DEPARTMENT OF THE INTERIOR
GEOLOGICAL SURVEY

APPLICATION FOR PERMIT TO DRILL, DEEPEN, OR PLUG BACK

1a. TYPE OF WORK

DRILL ☒DEEPEN ☐PLUG BACK ☐

b. TYPE OF WELL

OIL
WELL ☒GAS
WELL ☐OTHER ☐SINGLE
ZONE ☒MULTIPLE
ZONE ☐

2. NAME OF OPERATOR

Cities Service Oil Company ✓

3. ADDRESS OF OPERATOR

P. O. Box 4906 - Midland, Texas 79701

4. LOCATION OF WELL (Report location clearly and in accordance with any State requirements.)*

At surface

660' FSL & 1980' FEL of Sec. 13 T21S-R21E, Eddy Co., N. Mexico

At proposed prod. zone

Same as above

14. DISTANCE IN MILES AND DIRECTION FROM NEAREST TOWN OR POST OFFICE*

30 miles West of Carlsbad, New Mexico

15. DISTANCE FROM PROPOSED*

LOCATION TO NEAREST
PROPERTY OR LEASE LINE, FT.
(Also to nearest drlg. unit line, if any)

660'S

16. NO. OF ACRES IN LEASE

1520

18. DISTANCE FROM PROPOSED LOCATION*

TO NEAREST WELL, DRILLING, COMPLETED,
OR APPLIED FOR, ON THIS LEASE, FT.

19. PROPOSED DEPTH

2000

17. NO. OF ACRES ASSIGNED
TO THIS WELL

40

20. ROTARY OR CABLE TOOLS

Rotary

21. ELEVATIONS (Show whether DF, RT, GR, etc.)

4531' GR

22. APPROX. DATE WORK WILL START*

23.

PROPOSED CASING AND CEMENTING PROGRAM

SIZE OF HOLE	SIZE OF CASING	WEIGHT PER FOOT	SETTING DEPTH	QUANTITY OF CEMENT
16"	13-3/8"	48#	30'	3 Yds. of Redi-Mix (circ.)
12-1/4"	9-5/8"	36#	300'	400 sacks (circulated)
7-7/8"	5-1/2"	15#	2000'	1200 sacks (circulated)

It is proposed to drill to a T.D. of 2000' and test the Glorieta Formation.

The blowout prevention program is as follows:

1. One set of Blind Rams.
2. One set of Drill Pipe Rams.

RECEIVED

NOV 26 1973

O. C. C.
ARTESIA, OFFICE

The surface hole for the 13-3/8" csg. will be drilled with a Rathole machine.

NOV 12 1973
U. S. GEOLOGICAL SURVEY
ARTESIA, NEW MEXICO

IN ABOVE SPACE DESCRIBE PROPOSED PROGRAM: If proposal is to deepen or plug back, give data on present productive zone and proposed new productive zone. If proposal is to drill or deepen directionally, give pertinent data on subsurface locations and measured and true vertical depths. Give blowout prevention program, if any.

24. S. J. P. J. J. Region Oper. Mgr. November 9, 1973
SIGNED TITLE DATE

(This space for Federal or State office use)

PERMIT NO.

APPROVAL DATE

APPROVED BY

DISTRICT ENGINEER

CONDITIONS OF APPROVAL, IF ANY:

TITLE

DATE

NOV 21 1973

DECLARED WATER EMBANKMENT
CEMENT BEHIND
CASING MUST BE CIRCULATED
980' 5 1/2"NOTIFY USGS IN SUFFICIENT TIME TO
WITNESS CEMENTING THE 5 1/2" CASING.

*See Instructions On Reverse Side

NEW-MEXICO OIL CONSERVATION COMMISSION
WELL LOCATION AND ACRESAGE DEDICATION AT

All distances must be from the outer boundaries of the Section

CITIES SERVICE OIL COMPANY		Government V		1
O	13	21 SOUTH	21 EAST	EDDY
660	SOUTH		1980	EAST
4530.7	Glorieta	Wildcat	40	

1. Outline the acreage dedicated to the subject well by colored pencil or hatchure marks on the plat below.

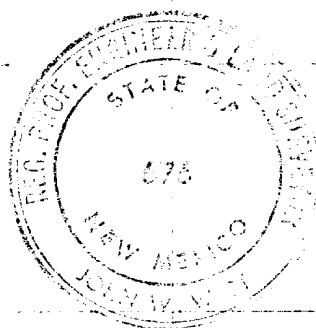
2. If more than one lease is dedicated to the well, outline each and identify the ownership there of (show interest and royalty).

3. If more than one lease of different ownership is dedicated to the well, have the interests of all owners consolidated by communitization, unitization, force-pooling, etc?

Yes ☐ No ☐ If answer is "yes" type of consolidation _____

If answer is "no" list the owners and tract descriptions which have actually been consolidated (attach plat if necessary) _____

No oil/water will be assigned to the well until all interests have been consolidated (by communitization, unitization, force-pooling, or otherwise) or until a non-standard unit eliminating such interests, has been approved by the Commission.



I hereby certify that the information furnished hereon is true and correct to the best of my knowledge and belief.

E. J. Fuller

Region Operation Manager

Cities Service Oil Company

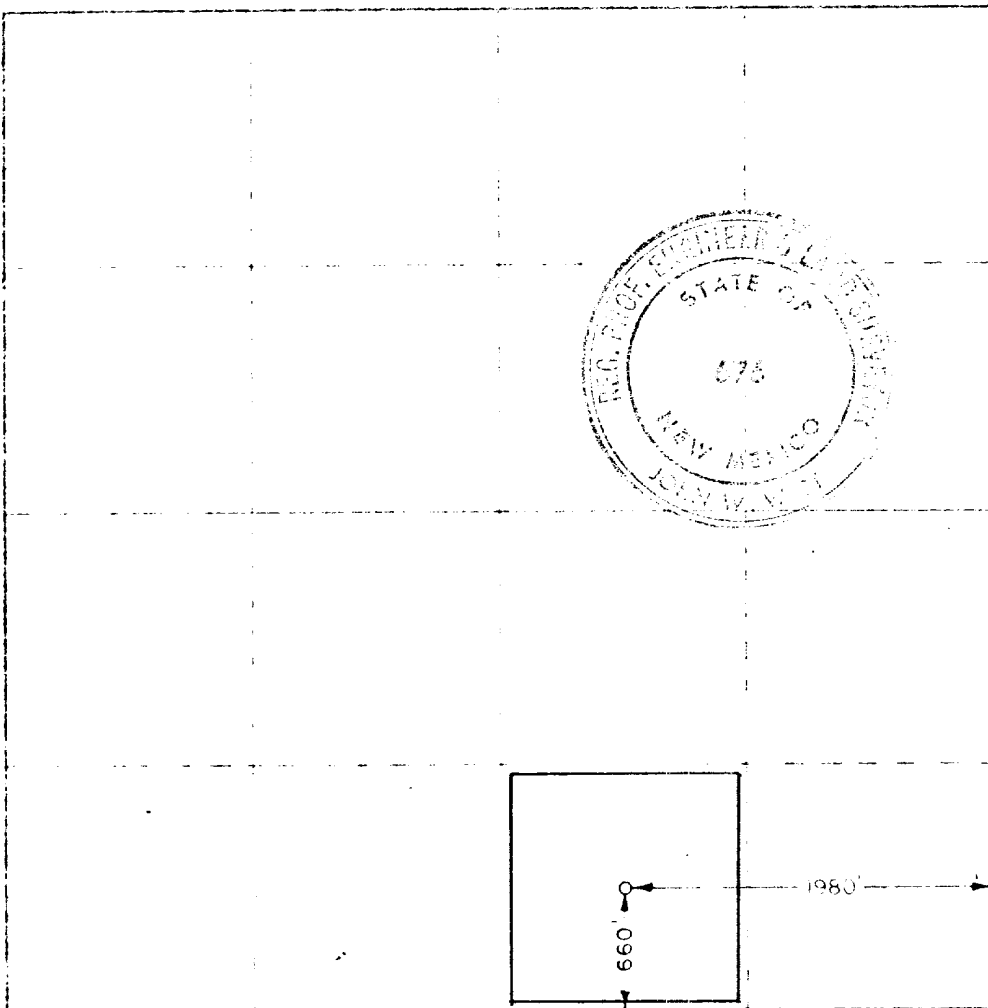
November 9, 1973

RECEIVED
NOV 12 1973
U.S. GEOLOGICAL SURVEY
ARTESIA, NEW MEXICO

I hereby certify that the information shown on this plat is true and correct to the best of my knowledge and belief.

11-8-1973

John W. V.





CITIES SERVICE OIL COMPANY

Box 4906
Midland, Texas 79701
Telephone: 915 684-7131

November 9, 1973

United States Department of Interior
Geological Survey
Artesia, New Mexico 88210

Re: Application for Permit to
Drill Government "V" No. 1
Eddy County, New Mexico

Gentlemen:

Cities Service Oil Company respectfully requests permission to drill the Government "V" No. 1 located 660' FSL, 1980' FEL, Sec. 13-T21S-R21E, Eddy County, New Mexico.

In support of the application, the following data is submitted:

1. Form 9-331C, Application for Permit to Drill
2. Form C-102, Well Location and Acreage Dedication Plat
3. Surface Usage Plan, which includes the following information:
 - a. Topo. map - "New Mexico Texas Hill Quadrangle" showing site of proposed location
 - b. Map showing existing roads in area with proposed access road lined in red
 - c. Directions to proposed location
 - d. Location layout plat showing approximate footage necessary to accommodate the rig, pipe racks, mud tanks and reserve pit
 - e. Blow out preventer diagram showing arrangement of BOP stack and components
 - f. Schematic diagram showing hole size and casing program
 - g. Summary of mud program

RECEIVED
NOV 12 1973
U. S. GEOLOGICAL SURVEY
ARTESIA, NEW MEXICO

November 9, 1973

The Government V No. 1 is located in rolling pasture land. The drilling site is fairly level. It will be necessary to build 2.2 miles of access road following an existing trail.

There does not appear to be any inhabited residences in the area within miles in any direction.

The location and one mile of the access road is on a Federal grazing lease to Mrs. Murphy Armstrong, P. O. Box 1873, Roswell, New Mexico. The remaining 1.2 miles of access road is on a Federal grazing lease to Mr. C. F. McWilliams, P. O. Box 1150, Carlsbad, New Mexico. We will notify these two lease holders of our intent to drill and negotiate a damage settlement with them prior to building our access road and location.

The primary objective of the well is the Yeso Dolomite with a projected TD of 2000'.

If completed as a producer, production equipment will be set no closer than 150' from the well with tanks set to collect oil and water which will be trucked to sale or disposal.

The reserve pit will be lined when it is built. If the well is completed as a producer, the pits will be backfilled, levelled, debris removed and surface equipment fenced. If it is a dry hole, the well will be plugged as per United States Geological Survey requirements, the pits backfilled and levelled and all debris removed.

The blow out preventer program will consist of blind rams and pipe rams as shown on the attached plat.

The proposed casing program consists of:

13-3/8" conductor pipe set at 30' by rat hole machine and cemented to surface with Redi-Mix.

9-5/8" surface casing set at 300' with cement circulated to the surface.

5-1/2" production casing set at TD 2000' with cement circulated to surface.

Please contact me at the above address if further information is needed to evaluate this request.

Yours very truly,



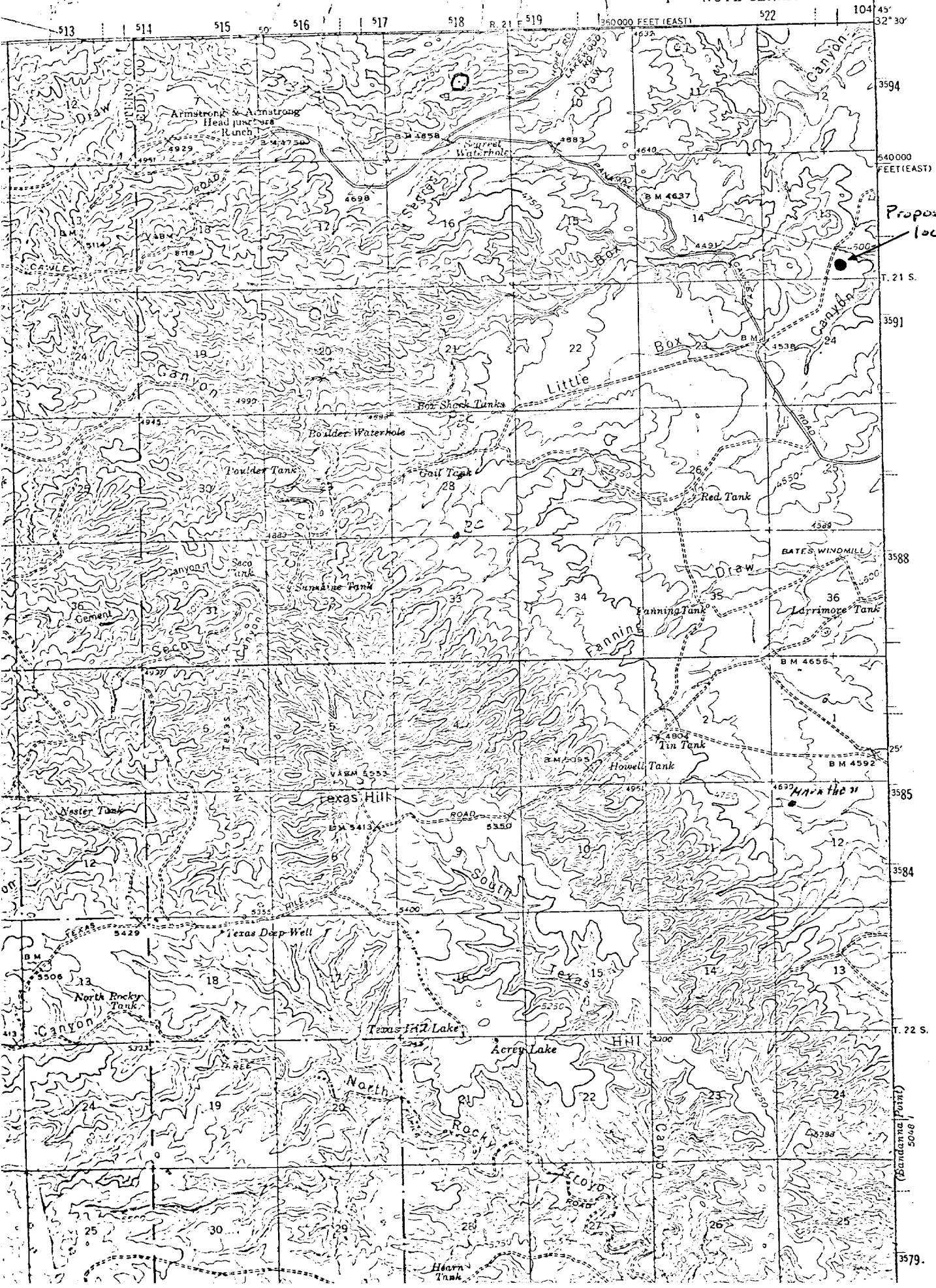
E. Y. Wilder
Region Operations Manager

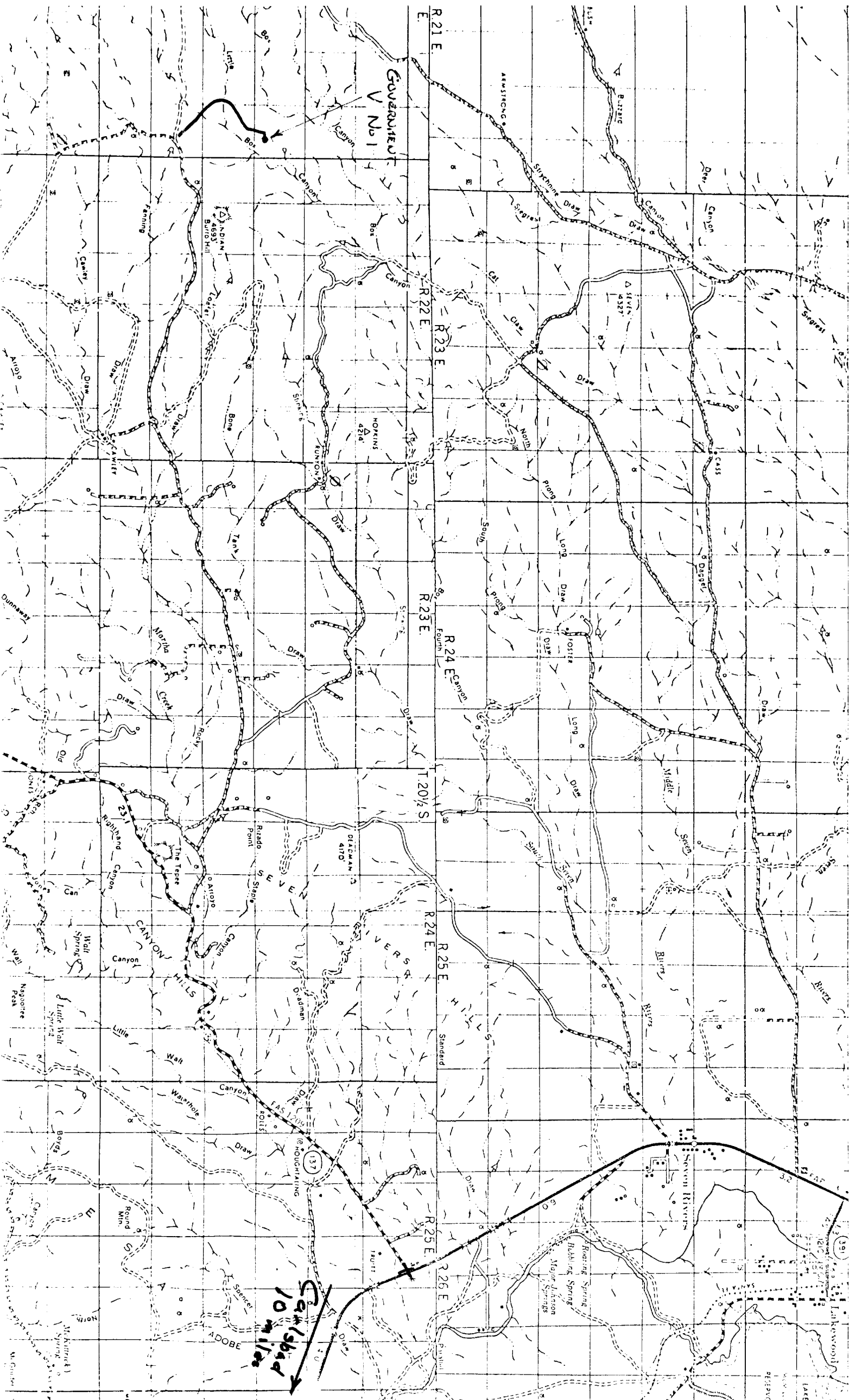
EYW/lis
Attachments

RECEIVED
NOV 12 1973
U. S. GEOLOGICAL SURVEY
ARTESIA, NEW MEXICO

TEXAS HILL QUADRANGLE
1 NUTE SERIES

(Box 1)





Directions to Government V No. 1:

Location: 660' FSL, 1980' FEL, Sec. 13-21S-21E, Eddy Co.,
New Mexico

Directions:

Start at Carlsbad

Take Hwy. 285 toward Artesia 10 miles and turn left at Conoco
Station on top of hill.

Go 9.2 miles to Y and take right fork.

Go 4.4 miles to Marathon Plant on south side of road.

Go past Marathon plant 5.7 miles and take the right fork onto
a caliche road (there is a Great Western and El Paso sign at
this point).

Continue westerly 6.7 miles passing the following landmarks:

2 miles road turning north to Great Western dry
hole (and entrance road to CSO Co. Loafer Draw
Unit A No. 1)

0.5 mile further to water tank on north side of
road (take the trail bearing to the right).

0.6 mile further to gate (proceed through gate).

2.3 miles to Burro Hill

1.3 miles to trail turning to north (take trail)
6.7 miles

Continue northerly on trail 1.0 mile to draw.

Cross draw and continue 1 mile passing these landmarks:

0.1 mile to gate

0.1 mile to 2nd gate

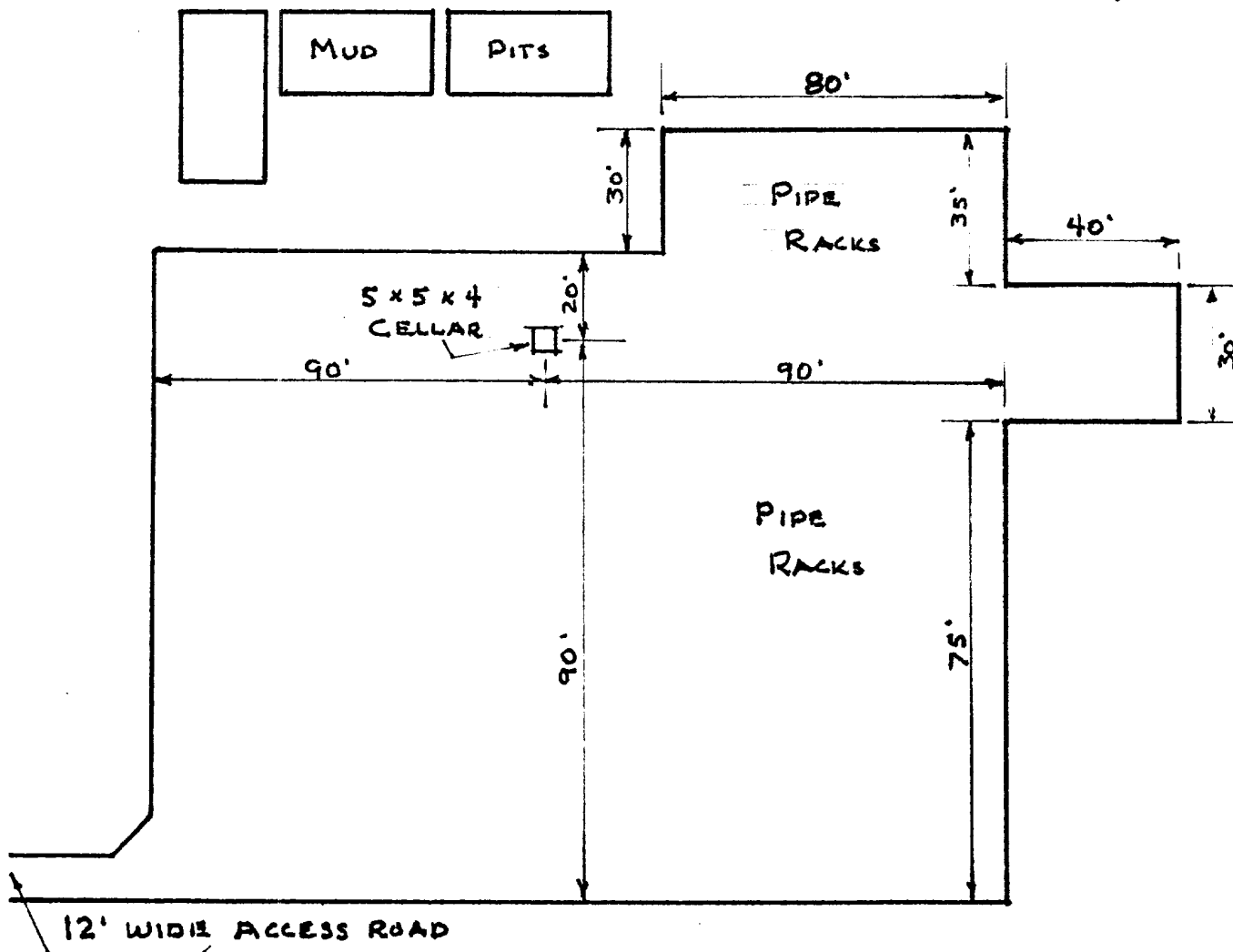
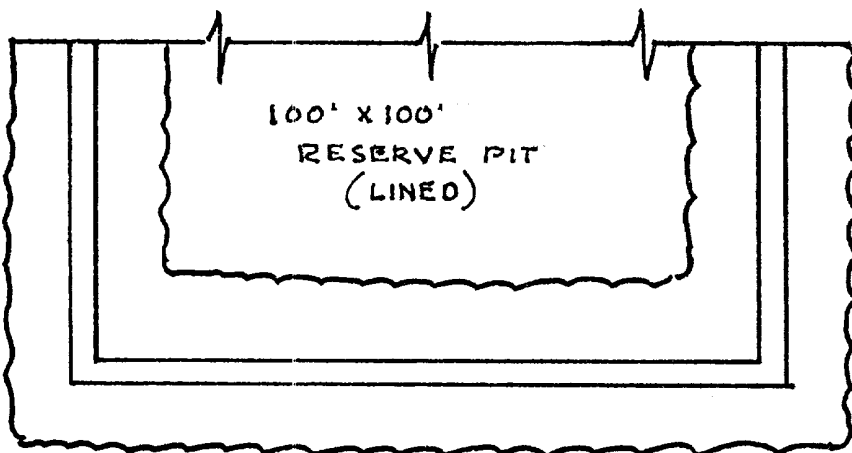
0.8 mile leave trail and turn right (east)
1.0 mile

Go 0.2 miles east to location.

— GOVERNMENT V No. 1 —
660 FSL, 1980 FEL SEC 13-215-21E

EDDY COUNTY NEW MEXICO

RIG UP WITH V-DOOR TO EAST AND
RESERVE PIT TO SOUTH —



BLOWOUT PREVENTER REQUIREMENTS

API _____ M- _____ - SRRA
SRGA

Government "V" No. 1

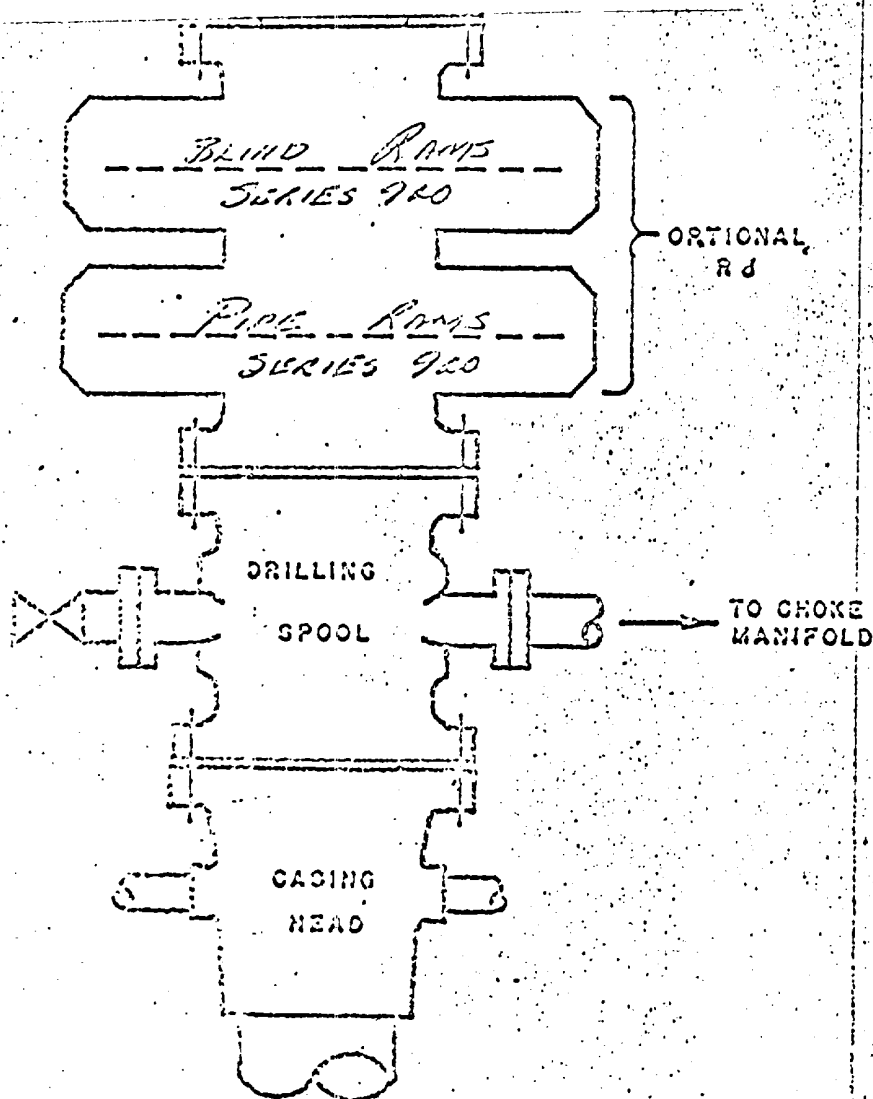
660 FSL 1980 FEL

Sec 13-T21S-R21E

Eddy Co., New Mexico

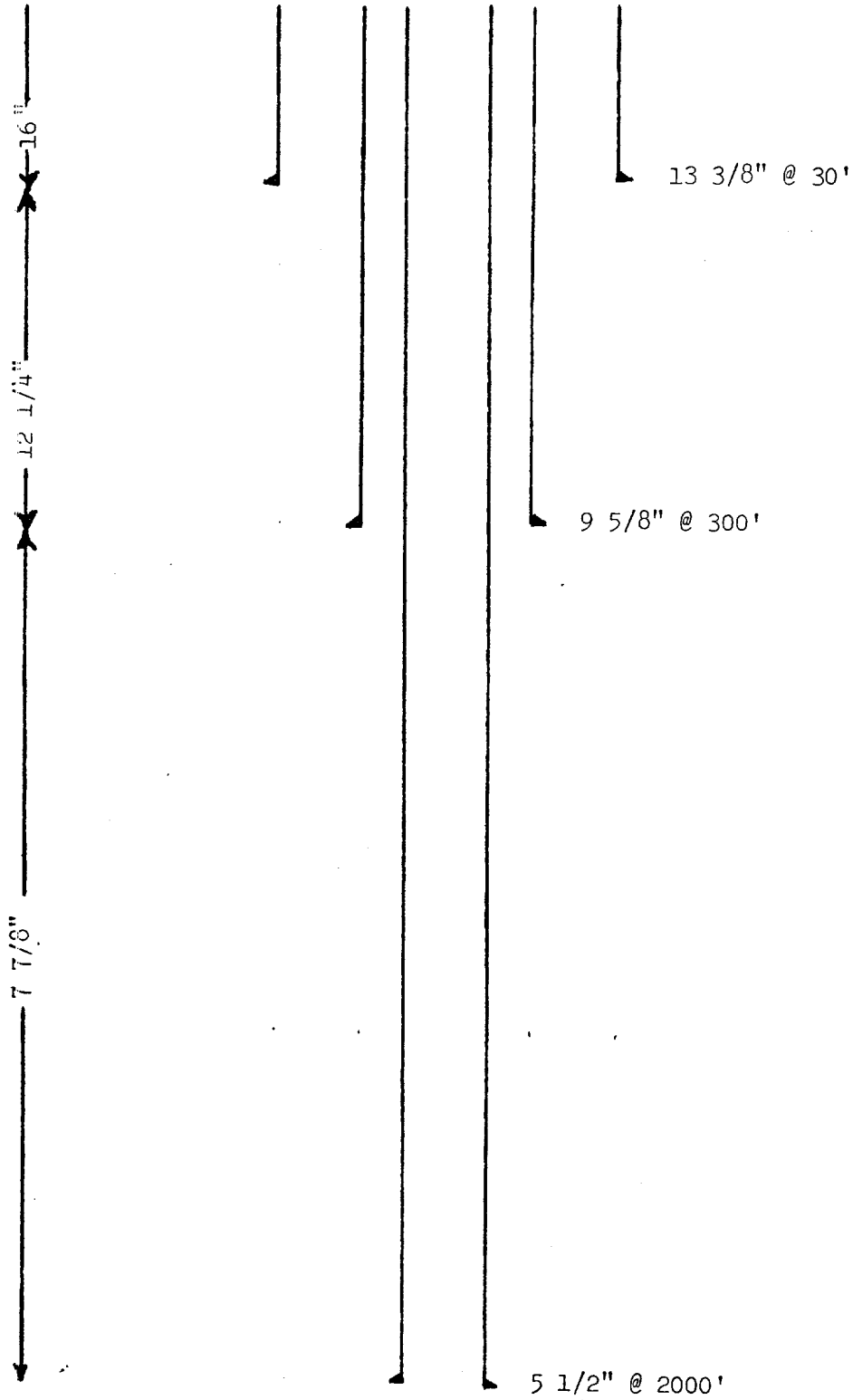
CLOSING METHOD

SUFFICIENT ACCUMULATOR VOLUME SHALL BE AVAILABLE TO OPERATE BOTH THE BOP PREVENTER AND PIPE RAM PREVENTER WITH A SNAP-ACTION THROUGH THE FOLLOWING STEPS: CLOSE-OPEN-CLOSE.



CITIES SERVICE OIL COMPANY
GOVERNMENT V WELL NO. 1
SECTION 13-T21S-R21E
EDDY COUNTY, NEW MEXICO

CASING SCHEMATIC



MUD PROGRAM

Government "V" No. 1
660' FSL 1980' FEL
Sec 13-T21S-R21E
Eddy Co., New Mexico

- 0 - 30' 13-3/8" conductor casing set with rat hole machine and cemented with redi-mix.
- 30' - 2000' Spud mud, Aquagel flocculated with lime. Treat with Lem. If severe loss occurs, blind drill to casing point with fresh water.