

UNITED STATES
DEPARTMENT OF THE INTERIOR
GEOLOGICAL SURVEY

APPLICATION FOR PERMIT TO DRILL, DEEPEN, OR PLUG BACK

1a. TYPE OF WORK

DRILL ☒DEEPEN ☐PLUG BACK ☐

b. TYPE OF WELL

OIL
WELL ☒GAS
WELL ☐OTHER ☐

Amended Location

SINGLE
ZONE ☐MULTIPLE
ZONE ☒

2. NAME OF OPERATOR

Tenneco Oil Company

3. ADDRESS OF OPERATOR

6800 Park Ten Blvd. Suite 200 North San Antonio, TX 78213

4. LOCATION OF WELL (Report location clearly and in accordance with any State requirements.)*

At surface

1980' FNL & 1830' FEL (SW NE)

At proposed prod. zone

Same

14. DISTANCE IN MILES AND DIRECTION FROM NEAREST TOWN OR POST OFFICE*

19.0 miles east and south of Artesia, New Mexico

15. DISTANCE FROM PROPOSED*

LOCATION TO NEAREST
PROPERTY OR LEASE LINE, FT.
(Also to nearest drlg. unit line, if any)

1830'

18. DISTANCE FROM PROPOSED LOCATION*
TO NEAREST WELL, DRILLING, COMPLETED,
OR APPLIED FOR, ON THIS LEASE, FT.

1957.4'

16. NO. OF ACRES IN LEASE

160

19. PROPOSED DEPTH

9300'

20. ROTARY OR CABLE TOOLS

Rotary

21. ELEVATIONS (Show whether DF, RT, GR, etc.)

3553' GR

23.

PROPOSED CASING AND CEMENTING PROGRAM

SIZE OF HOLE	SIZE OF CASING	WEIGHT PER FOOT	SETTING DEPTH	QUANTITY OF CEMENT
17-1/2"	13-3/8" New	48# H-40 ST&C	300'	Sufficient to circulate
11"	8-5/8" New	32# K-55 ST&C	3400'	Will circulate
7-7/8"	5-1/2" New	15.5# K-55 ST&C	5400'	
	5-1/2" New	17# K-55 ST&C	5400'-9200'	Cement from 7650' to 9200'

1. Set 40' of 20" conductor pipe. Cement with Redi-Mix.
2. Drill 17-1/2" hole to 300'. Cement 13-3/8" casing with cement circulated to surface. Nipple up 10" 3000# W.P. B.O.P.'s.
3. Drill 11" hole to 3400'±. Cement 8-5/8" casing with cement circulated to surface. This will cement off the Grayburg and San Andres between 2560' to 3000'.
4. Nipple up 10", 3000# W.P. B.O.P.'s. Test ram type B.O.P.'s to 3000 psi; Test Annular B.O.P. and 8-5/8" casing to 1500 psi. Function test B.O.P.'s daily and on all trips.
5. Drill to 9200' T.D. Log and Test as warranted. Run 5-1/2" casing if productive.
6. Perforate and Stimulate as necessary.

*****SEE ATTACHED EXHIBITS*****

IN ABOVE SPACE DESCRIBE PROPOSED PROGRAM: If proposal is to deepen or plug back, give data on present productive zone and proposed new productive zone. If proposal is to drill or deepen directionally, give pertinent data on subsurface locations and measured and true vertical depths. Give blowout preventer program, if any.

24.

SIGNED

Theodore K. Grant

TITLE

Division Drilling Engineer

DATE

8/21/79

(This space for Federal or State office use)

PERMIT NO.

(Orig. & 1) ALBERT P. STALL

APPROVAL DATE

ACTING DISTRICT ENGINEER

AUG 27 1979

RECEIVED
CONDITIONS OF APPROVAL, IF ANY:

TITLE

DATE

AUG 28 1979

O. C. C.
ARTESIA, OFFICE

*****REVISED*****

NEW MEXICO OIL CONSERVATION COMMISSION
WELL LOCATION AND ACREAGE DEDICATION PLAT

Form C-102
Supersedes C-128
Effective 1-1-65

All distances must be from the outer boundaries of the Section.

Amended Location

Operator Tenneco Oil Company			Lease Federal 33-G			Well No. 1		
Tract Letter G	Section 33	Township 17S	Range 29E	County Eddy				
Actual Field Location of Well:								
1980 feet from the North line and		1830 feet from the East line						
3553		Cisco Wolfcamp		Post <i>Unit 2</i> S. Empire Wolfcamp			Dedicated Acreage: 80 Acres	

- Outline the acreage dedicated to the subject well by colored pencil or hatchure marks on the plat below.
- If more than one lease is dedicated to the well, outline each and identify the ownership thereof (both as to working interest and royalty).
- If more than one lease of different ownership is dedicated to the well, have the interests of all owners been consolidated by communitization, unitization, force-pooling, etc?

☐ Yes ☐ No

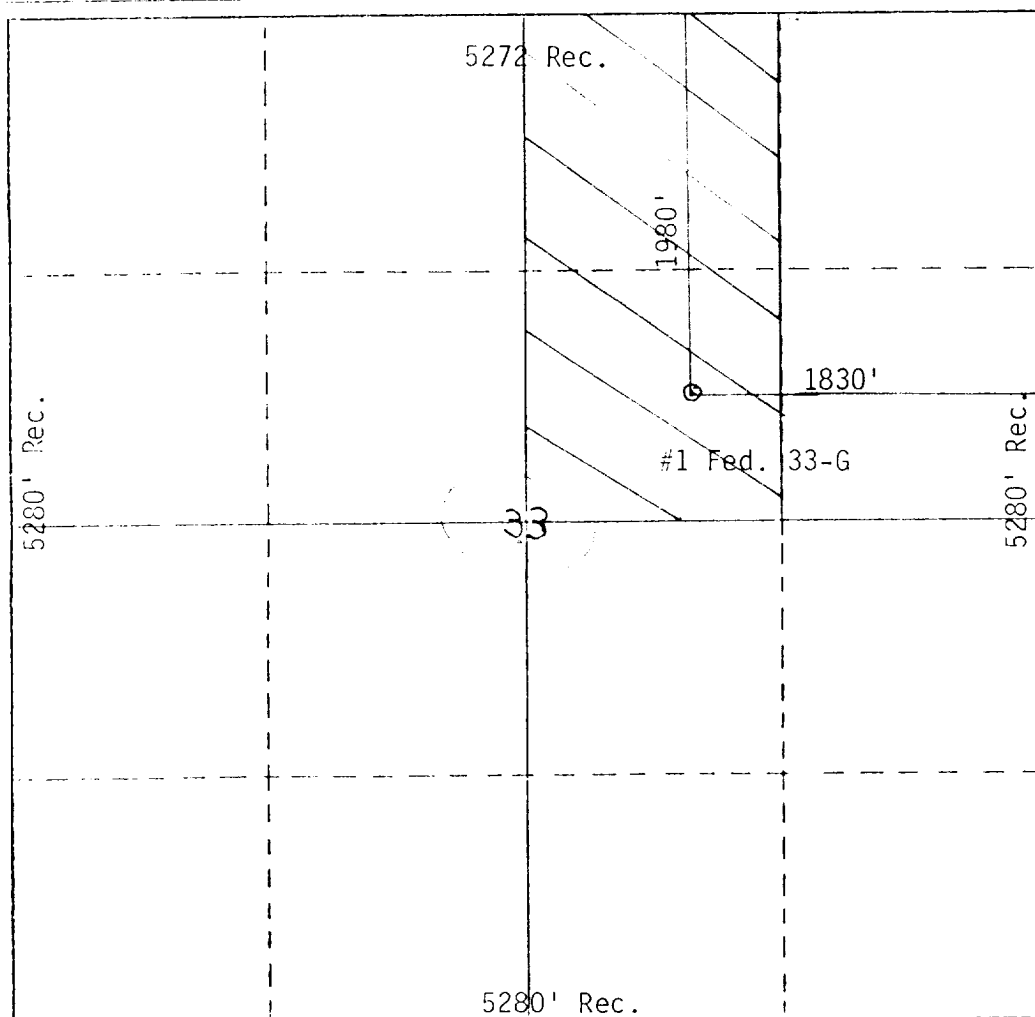
If answer is "yes," type or consolidation:

**O. G. C.
ARTESIA, OFFICE**

**U. S. GEOLOGICAL SURVEY
ARTESIA, NEW MEXICO**

If answer is "no," list the owners and tract descriptions which have actually been consolidated. (Use reverse side of this form if necessary.)

No allowable will be assigned to the well until all interests have been consolidated (by communitization, unitization, forced-pooling, or otherwise) or until a non-standard unit, eliminating such interests, has been approved by the Commission.



CERTIFICATION

I hereby certify that the information contained herein is true and complete to the best of my knowledge and belief.

Name **W. H. Dixon**

Position
Division Geological Engineer

Company
Tenneco Oil Company

Date
8-21-79

I hereby certify that the well location shown on this plat was plotted from field notes of actual surveys made by me or under my supervision, and that the same is true and correct to the best of my knowledge and belief.

Date Surveyed

Registered Professional Engineer
on Oil and Gas Surveying

Certificate No.

