

NO. OF COPIES RECEIVED	
DISTRIBUTION	
SANTA FE	1
FILE	1
U.S.G.S.	1
LAND OFFICE	
OPERATOR	1

NEW MEXICO OIL CONSERVATION COMMISSION
RECEIVED

30-015-23613

Form C-101
Revised 1-1-65

JAN 14 1981

O.C.D.

5A. Indicate Type of Lease
STATE FEE

5. State Oil & Gas Lease No.

7. Unit Agreement Name

8. Farm or Lease Name
Pardue Farms "26"

9. Well No.
4

10. Field and Pool, or Wildcat
Und S. Culebra Bluff Bone Spring

12. County
Eddy

19. Proposed Depth
7200'

19A. Formation
Bone Spring

20. Rotary or C.T.
Rotary

21. Elevation (Show whether DT, RT, etc.)
3028' GL

21A. Kind & Status Plug Bond
Active

21B. Drilling Contractor
Hondo Drilling

22. Approx. Date Work will start
February 25, 1981

APPLICATION FOR PERMIT TO DRILL, DEEPEN, OR PLUG BACK

1a. Type of Work
DRILL DEEPEN PLUG BACK

b. Type of Well
OIL WELL GAS WELL OTHER SINGLE ZONE MULTIPLE ZONE

2. Name of Operator
Maddox Energy Corporation

3. Address of Operator
Suite 906, Blanks Building, Midland, Texas 79701

4. Location of Well
UNIT LETTER L LOCATED 1980 FEET FROM THE south LINE
AND 660 FEET FROM THE west LINE OF SEC. 26 TWP. 23-S RCP. 28-E NMPM

PROPOSED CASING AND CEMENT PROGRAM

SIZE OF HOLE	SIZE OF CASING	WEIGHT PER FOOT	SETTING DEPTH	SACKS OF CEMENT	EST. TOP
12 1/4"	10 3/4"	40.5#	500'	250	Circulate
9 1/2"	7"	23#	3100'	1000	Circulate
6 1/4"	4 1/2"	10.5# & 11.6#	7200'	1200	1800'

4 1/2" DV Tool at approximately 5800'.
10" - 3000# hydraulic double ram preventor, 500' to TD.

Handwritten notes:
7-21-81
1-23-81

APPROVAL VALID FOR 180 DAYS
PERMIT EXPIRES 7-21-81
UNLESS DRILLING UNDERWAY

IN ABOVE SPACE DESCRIBE PROPOSED PROGRAM; IF PROPOSAL IS TO DEEPEN OR PLUG BACK, GIVE DATA ON PRESENT PRODUCTIVE ZONE AND PROPOSED NEW PRODUCTIVE ZONE. GIVE BLOWOUT PREVENTER PROGRAM, IF ANY.

I hereby certify that the information above is true and complete to the best of my knowledge and belief.

Signed Andrew D. Cary Title Operations Manager Date January 12, 1981

(This space for State Use)

APPROVED BY W.A. Gussert TITLE SUPERVISOR, DISTRICT II DATE JAN 21 1981

CONDITIONS OF APPROVAL, IF ANY:

**N MEXICO OIL CONSERVATION COMMISSION
WELL LOCATION AND ACREAGE DEDICATION PLAT**

Form C-102
Supersedes C-128
Effective 1-1-85

All distances must be from the outer boundaries of the Section

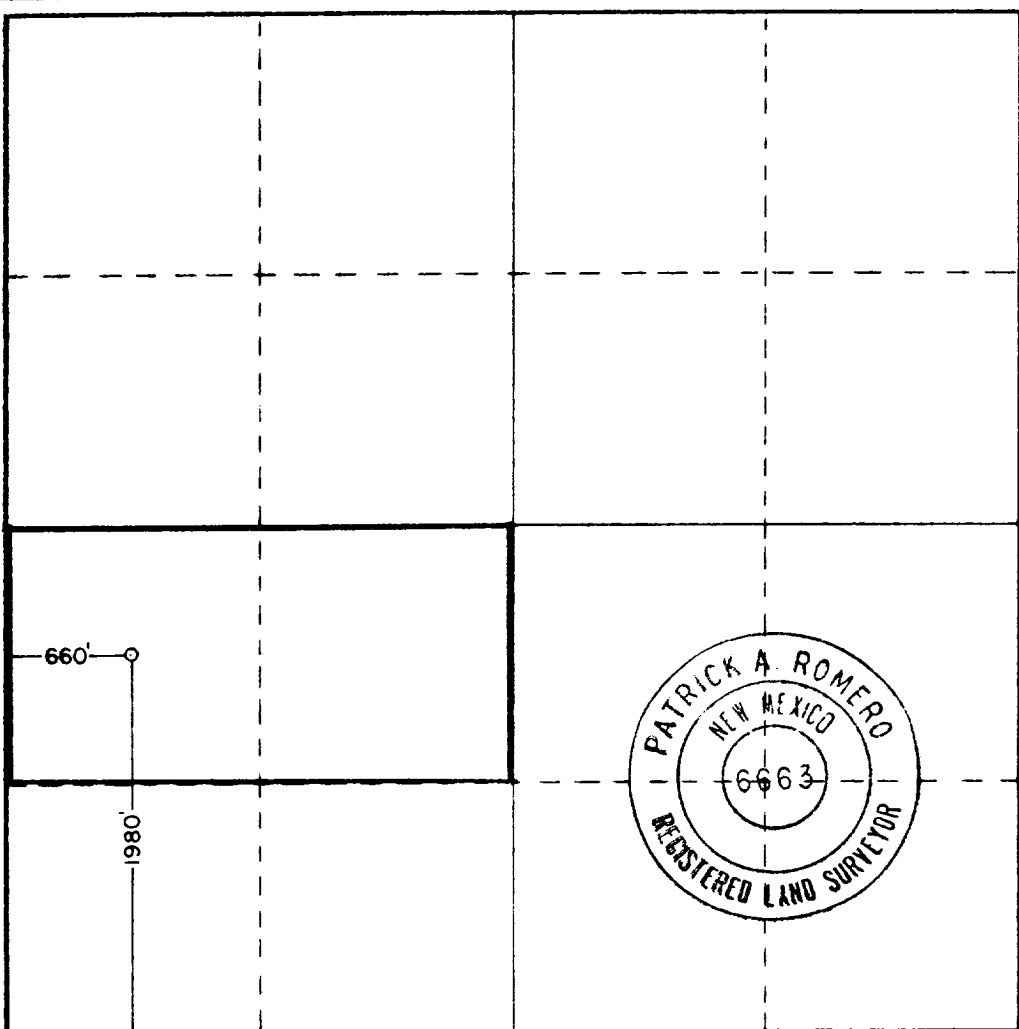
Operator Maddox Energy Inc.		Lease Pardue Farm 26		Well No. 4
Unit Letter L	Section 26	Township 23 South	Range 28 East	County Eddy
Actual Footage Location of Well: 1980 feet from the South line and 660 feet from the West line				
Ground Level Elev. 3027.8	Producing Formation Bone Spring	Pool <i>and</i> S. Culebra Bluff - Bone Spring	Dedicated Acreage: 80 Acres	

1. Outline the acreage dedicated to the subject well by colored pencil or hachure marks on the plat below.
2. If more than one lease is dedicated to the well, outline each and identify the ownership thereof (both as to working interest and royalty).
3. If more than one lease of different ownership is dedicated to the well, have the interests of all owners been consolidated by communitization, unitization, force-pooling, etc?

Yes No If answer is "yes," type of consolidation **Operating Agreement**

If answer is "no," list the owners and tract descriptions which have actually been consolidated. (Use reverse side of this form if necessary.) _____

No allowable will be assigned to the well until all interests have been consolidated (by communitization, unitization, forced-pooling, or otherwise) or until a non-standard unit, eliminating such interests, has been approved by the Commission.



CERTIFICATION

I hereby certify that the information contained herein is true and complete to the best of my knowledge and belief

Name *Quadrant Cany*
 Position **Operations Manager**
 Company **Maddox Energy Corporation**
 Date **January 12, 1981**

I hereby certify that the well location shown on this plat was plotted from field notes of actual surveys made by me or under my supervision, and that the same is true and correct to the best of my knowledge and belief.

Date Surveyed **January 7, 1981**
 Registered Professional Engineer and Land Surveyor

Patrick A. Romero

Certificate No. **JOHN W. WEST 676**
PATRICK A. ROMERO 6663
Ronald J. Eidson 3239

