

6/8/83

30-015-24432

DEPARTMENT OF THE INTERIOR
GEOLOGICAL SURVEY

APPLICATION FOR PERMIT TO DRILL, DEEPEN, OR PLUG BACK

1a. TYPE OF WORK
 DRILL DEEPEN PLUG BACK

b. TYPE OF WELL
 OIL WELL GAS WELL OTHER

2. NAME OF OPERATOR
 Perry R. Bass ✓

3. ADDRESS OF OPERATOR
 P O Box 2760 Midland Tx 79702

4. LOCATION OF WELL (Show clearly and in accordance with map of well location)
 860' ~~3180'~~ ~~660'~~ FSL & 1980' FWL, Sec. 11, T22S, R28E

At proposed prod. zone
 Same as above

14. DISTANCE IN MILES AND DIRECTION FROM NEAREST TOWN OR POST OFFICE
 15 miles east of Carlsbad, New Mexico

15. DISTANCE FROM PROPOSED LOCATION TO NEAREST PROPERTY OR LEASE LINE (Also to nearest drlg. well line, if any)
 660'

16. NO. OF ACRES IN LEASE
 320

17. NO. OF ACRES ASSIGNED TO THIS WELL
 320

18. DISTANCE FROM PROPOSED LOCATION TO NEAREST WELL, DEEPEN COMPLETED, OR APPLIED FOR, ON THIS LEASE, ETC.
 None

19. PROPOSED DEPTH
 12,700

20. ROTARY OR CABLE TOOL
 Rotary

21. ELEVATIONS (Show whether DP, RT, GR, etc.)
 3153' GL

22. APPROX. DATE WORK WILL START*
 Upon approval

RECEIVED
MAR 03 1983
O. C. D.
ARTESIA, OFFICE

5. LEASE DESIGNATION AND SERIAL NO.
 LC-069142A

6. IF INDIAN, ALLOTTEE OR TRIBE NAME

7. UNIT AGREEMENT NAME
 Big Eddy Unit

8. FARM OR LEASE NAME
 Big Eddy Unit

9. WELL NO.
 100

10. FIELD AND POOL, OR WILDCAT
Und.
 S.W. Indian Flats Morrow

11. SEC., T., R., M., OR BLK. AND SURVEY OR AREA
 Sec. 11, T22S, R28E

12. COUNTY OR PARISH
 Eddy

13. STATE
 NM

22. APPROX. DATE WORK WILL START*
 Upon approval

PROPOSED CASING AND CEMENTING PROGRAM

SIZE OF HOLE	SIZE OF CASING	WEIGHT PER FOOT	SETTING DEPTH	QUANTITY OF CEMENT
15"	11 3/4"	42#	400'	300 sx Circ to surface
11"	8 5/8"	24#	2700'	1100 sx Circ to surface
7 7/8"	4 1/2"	11.6#	12,540'	850 sx TOC est. 1000' above Wolfcamp

Drilling prognosis, BOP diagram, formation tops, and surface use plans are attached.

Exp Int
1-30-96
30-015-24432

Gas is dedicated.

APPROVAL SUBJECT TO
GENERAL REQUIREMENTS AND
SPECIAL STIPULATIONS
ATTACHED

RECEIVED

JAN 17 1983

OIL & GAS
MINERALS MGMT. SERVICE
ROSWELL, NEW MEXICO

18. ABOVE SPACE DESCRIBE PROPOSED PROGRAM: If proposal is to deepen or plug back, give data on present productive zone and proposed new productive zone. If proposal is to drill or deepen directionally, give pertinent data on subsurface locations and measured and true vertical depths. Give blowout preventer program, if any.

24. SIGNED *JG* TITLE Sr. Drilling Engineer DATE

(This space for Federal or State office use)

PERMIT NO. APPROVED

APPROVAL DATE

APPROVED BY *JG* DATE

CONDITIONS OF APPROVAL, IF ANY

MAR 2 1983

JAMES A. GILLHAM
DISTRICT SUPERVISOR

*Posted 2/19/83
JG
2/24/83*

NEW MEXICO OIL CONSERVATION COMMISSION
WELL LOCATION AND ACREAGE DEDICATION PLAT

Form C-102
Supersedes C-128
Effective 1-1-65

All distances must be from the outer boundaries of the Section

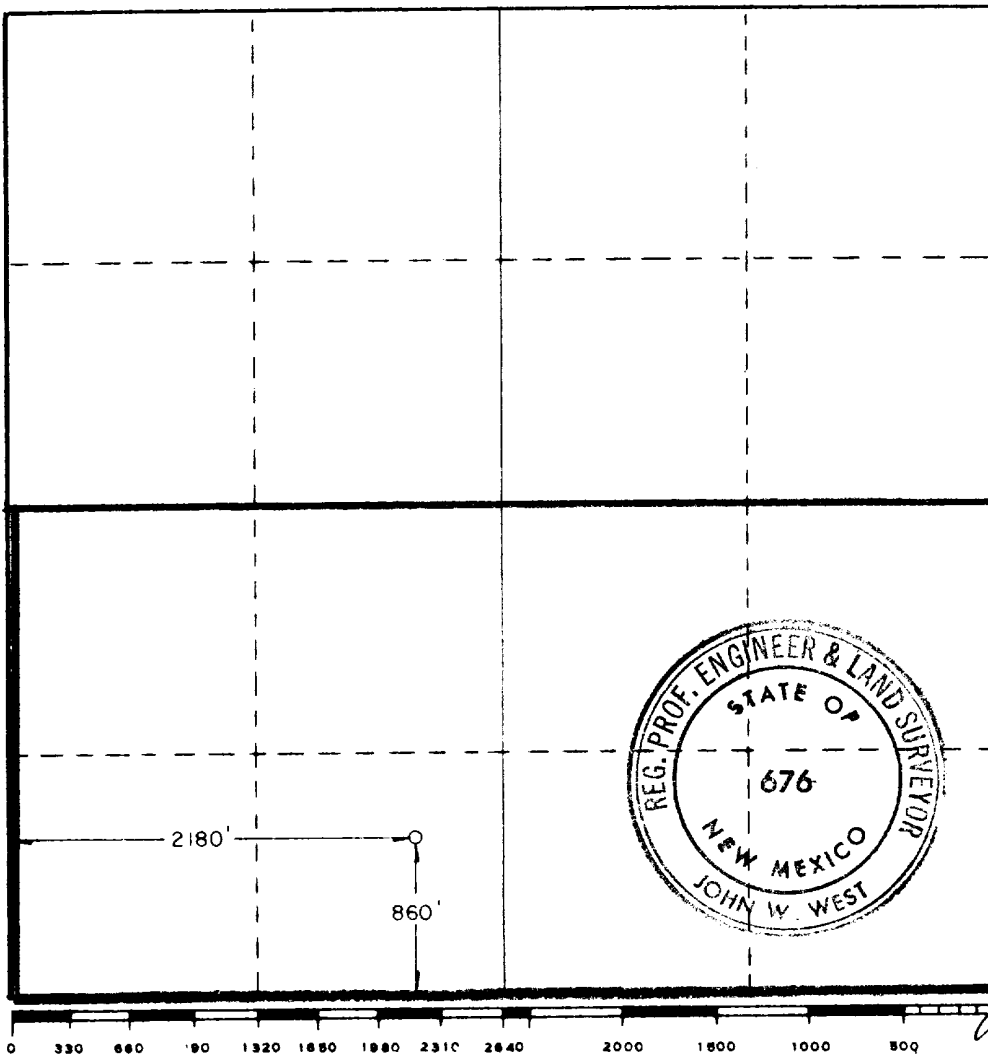
Operator Perry R. Bass		Lease Big Eddy Unit		Well No. 100
Unit Letter N	Section 11	Township 22 South	Range 28 East	County Eddy
Actual Footage Location of Well: 860 feet from the south line and 2180 feet from the west line				
Ground Level Elev. 3153.4	Producing Formation <i>Morrow</i>	Pool Unit <i>SW Indian Flats Morrow</i>	Dedicated Acreage: 320 Acres	

1. Outline the acreage dedicated to the subject well by colored pencil or hachure marks on the plat below.
2. If more than one lease is dedicated to the well, outline each and identify the ownership thereof (both as to working interest and royalty).
3. If more than one lease of different ownership is dedicated to the well, have the interests of all owners been consolidated by communitization, unitization, force-pooling, etc?

Yes No If answer is "yes," type of consolidation _____

If answer is "no," list the owners and tract descriptions which have actually been consolidated. (Use reverse side of this form if necessary.) _____

No allowable will be assigned to the well until all interests have been consolidated (by communitization, unitization, forced-pooling, or otherwise) or until a non-standard unit, eliminating such interests, has been approved by the Commission.



CERTIFICATION

I hereby certify that the information contained herein is true and complete to the best of my knowledge and belief.

Mark A. Gosch

Name
Mark A. Gosch
Position
Sr. Drilling Engineer
Company
Bass Enterprises Prod. Co.
Date
2/16/83

I hereby certify that the well location shown on this plat was plotted from field notes of actual surveys made by me or under my supervision, and that the same is true and correct to the best of my knowledge and belief.

Date Surveyed
Feb. 15, 1983
Registered Professional Engineer and/or Land Surveyor

John W. West
Certificate No
John W. West NM L.S. 676

NEW MEXICO OIL CONSERVATION COMMISSION
WELL LOCATION AND ACREAGE DEDICATION PLAT

Form C-102
Supersedes C-128
Effective 1-1-65

All distances must be from the outer boundaries of the Section

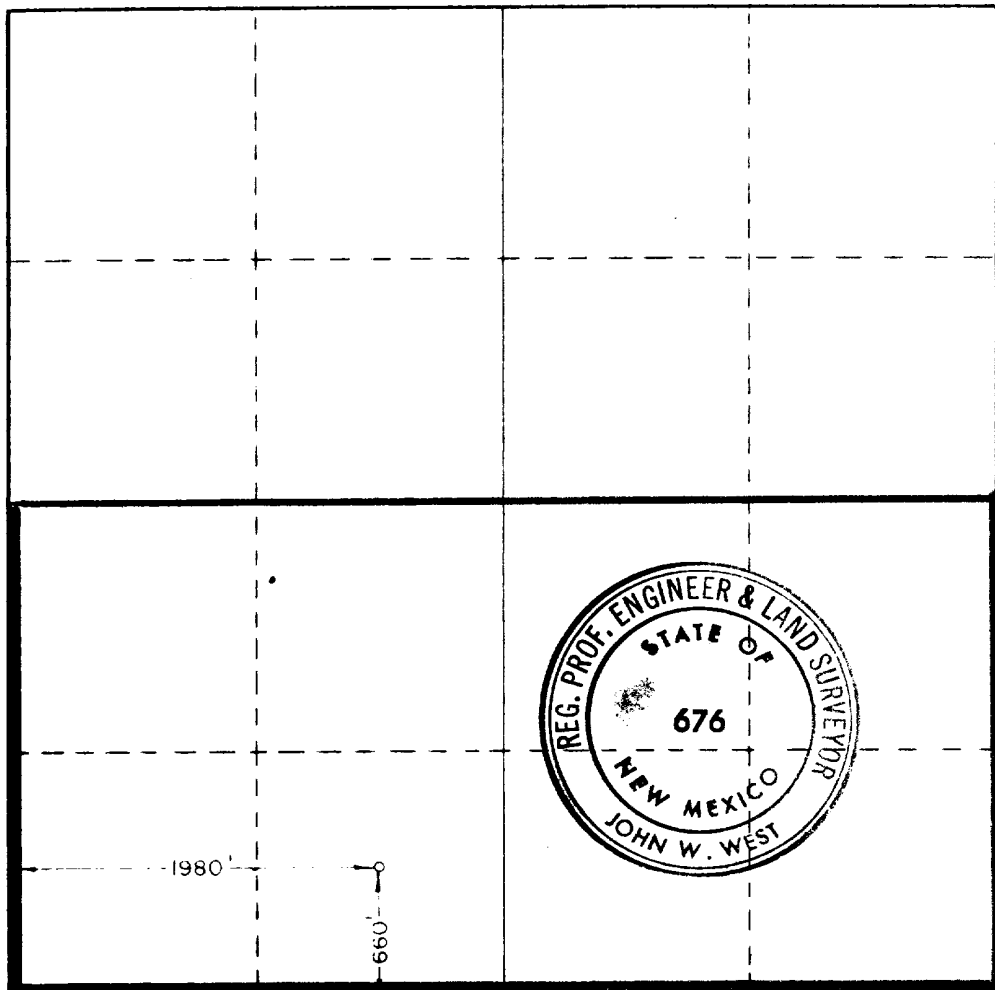
Operator Perry R. Bass			Lease Big Eddy Unit		Well No. 100
Unit Letter N	Section 11	Township 22 South	Range 28 East	County Eddy County	
Actual Footage Location of Well: 660 feet from the South line and 1980 feet from the West line					
Ground Level Elev. 3153.4	Producing Formation		Pool	Dedicated Acreage: Acres	

- Outline the acreage dedicated to the subject well by colored pencil or hachure marks on the plat below.
- If more than one lease is dedicated to the well, outline each and identify the ownership thereof (both as to working interest and royalty).
- If more than one lease of different ownership is dedicated to the well, have the interests of all owners been consolidated by communitization, unitization, force-pooling, etc?

Yes No If answer is "yes," type of consolidation _____

If answer is "no," list the owners and tract descriptions which have actually been consolidated. (Use reverse side of this form if necessary.) _____

No allowable will be assigned to the well until all interests have been consolidated (by communitization, unitization, forced-pooling, or otherwise) or until a non-standard unit, eliminating such interests, has been approved by the Commission.



CERTIFICATION

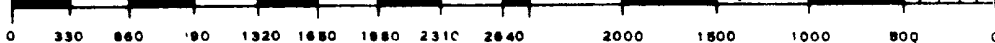
I hereby certify that the information contained herein is true and complete to the best of my knowledge and belief.

Name
Mark A. Gorsch
Position
Sr. Drilling Engineer
Company
Bass Enterprises Prod.
Date
1-11-83

I hereby certify that the well location shown on this plat was plotted from field notes of actual surveys made by me or under my supervision, and that the same is true and correct to the best of my knowledge and belief.

Date Surveyed
January 6, 1983
Registered Professional Engineer
and/or Land Surveyor
John W. West

Certificate No
JOHN W. WEST NO. 676



NEW MEXICO OIL CONSERVATION COMMISSION
WELL LOCATION AND ACREAGE DEDICATION PLAT

Form O-100
Supersedes O-128
Effective 1-1-65

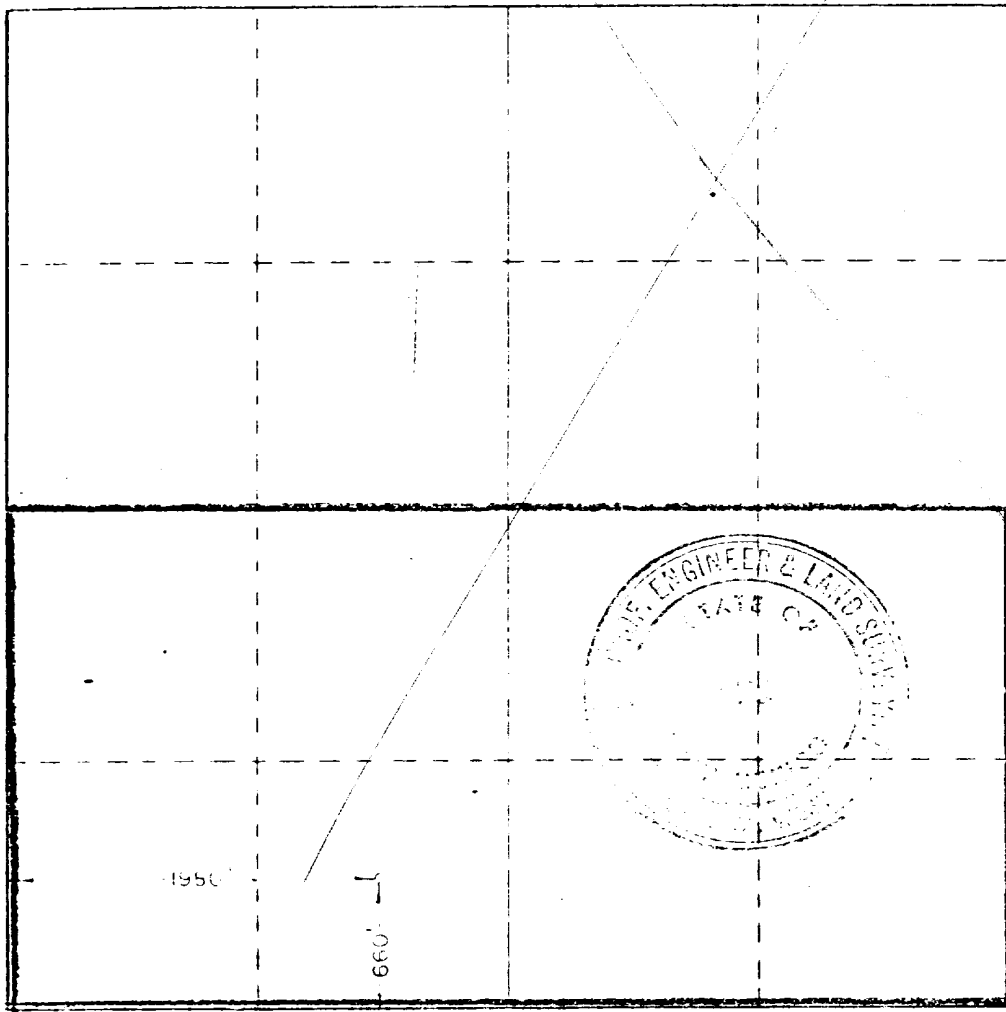
All distances must be from the outer boundaries of the Section

Operator Perry R. Bass			Lease Big Eddy Unit			Well No. 100		
Section	Range	Township	Range	County				
N	11	22 South	28 East	Eddy County				
Well Location								
660 feet from the South line and			1980 feet from the West line					
Well Depth	Producing Formation		Foot			Dedicated Acreage		
3153.4								

- Outline the acreage dedicated to the subject well by colored pencil or hatchure marks on the plat below.
- If more than one lease is dedicated to the well, outline each and identify the ownership thereof (both as to working interest and royalty).
- If more than one lease of different ownership is dedicated to the well, have the interests of all owners been consolidated by communitization, unitization, force-pooling, etc?
 Yes No If answer is "yes," type of consolidation _____

If answer is "no," list the owners and tract descriptions which have actually been consolidated. (Use reverse side of this form if necessary) _____

No allowable will be assigned to the well until all interests have been consolidated (by communitization, unitization, forced-pooling, or otherwise) or until a non-standard unit, eliminating such interests, has been approved by the Commission.



CERTIFICATION

I hereby certify that the information contained herein is true and complete to the best of my knowledge and belief.

By: *Mark A. York*
 Position: *Drilling Engineer*
 Company: *Perco L. Thompson & Fred*
 Date: *1-11-83*

I hereby certify that the well location shown on this plat was plotted from field notes of actual surveys made by me or under my supervision, and that the same is true and correct to the best of my knowledge and belief.

Date Surveyed:
January 6, 1983
 Registered Professional Engineer
 and Land Surveyor
John W. West

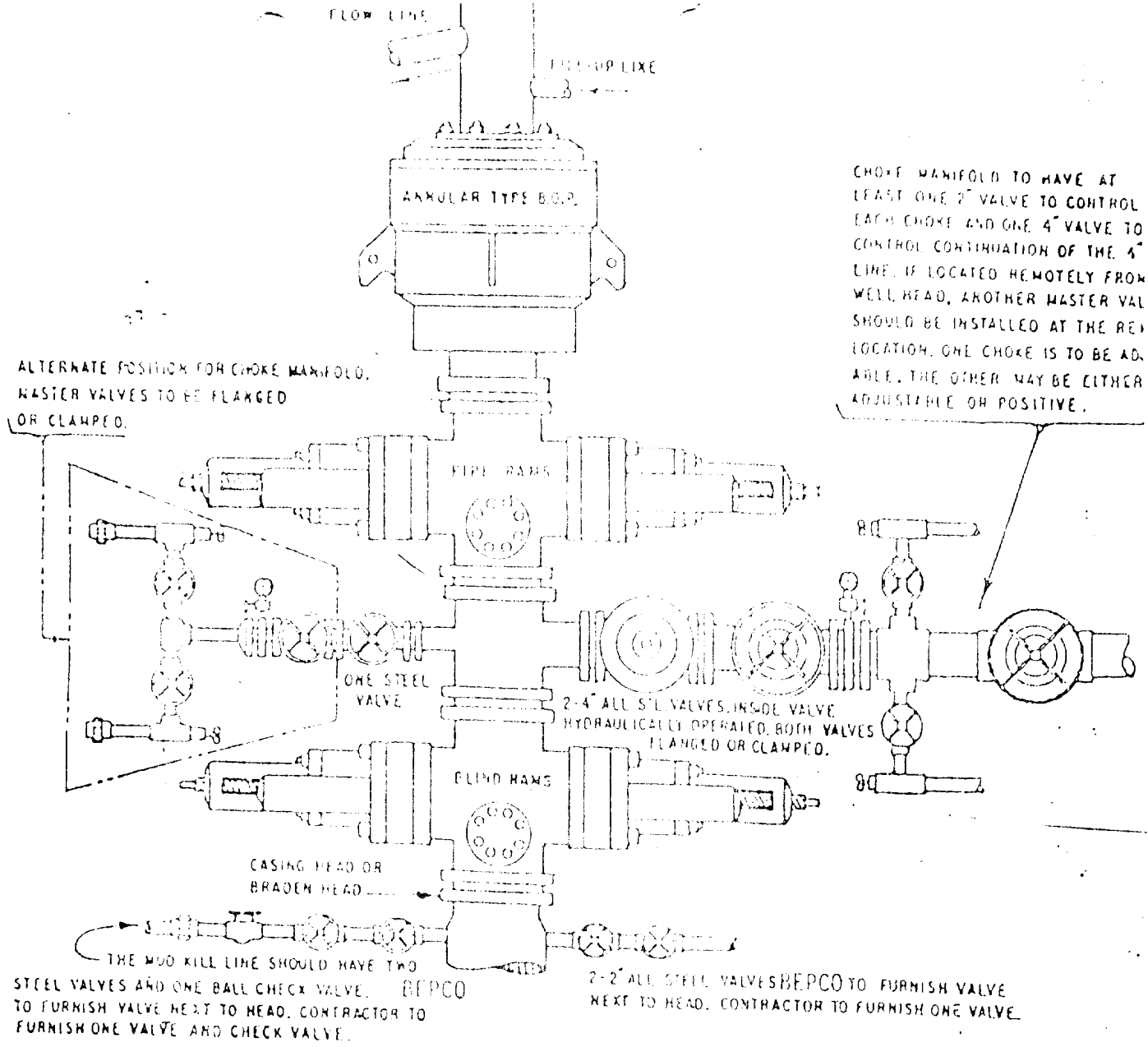
Certificate No
JOHN W. WEST NO. 676

BIG EDDY UNIT #100

GEOLOGIC FORMATION TOPS

Est. KB Elevation: 3178'

GEOLOGIC FORMATION TOP	SUBSEA DEPTH	MEASURED DEPTH KB
Delaware Sand	+ 440	2738
Indian Draw	- 440	3618
49'er	- 550	3728
Bone Springs	-3025	6203
Wolfcamp	-6420	9598
Strawn	-7860	11,038
Atoka	-8070	11,248
Atoka "30"	-8270	11,448
Upper Morrow	-8738	11,916
Middle Morrow	-9050	12,228
Lower Morrow	-9360	12,538



THE FOLLOWING CONSTITUTE MINIMUM BLOWOUT PREVENTER REQUIREMENTS

- A. CONDITIONS MAY BE MET BY AN ANNULAR TYPE BLOWOUT PREVENTER ON TOP AND A CHOKER SPOOL BELOW AND EITHER
 - (1) TWO RAM TYPE BLOWOUT PREVENTERS BELOW THE SPOOL, THE LOWER UNIT CONTAINING BLIND RAMS AND THE UPPER UNIT CONTAINING PIPE RAMS, OR
 - (2) A DUAL BLOWOUT PREVENTER BELOW THE SPOOL WITH BLIND RAMS ON BOTTOM AND PIPE RAMS ON TOP.
- B. OPERATING ON CHOKER SPOOL TO BE FLANGED, STUDDER OR CLAMPED.
- C. ALL CONNECTIONS FROM OPERATING MANIFOLDS TO PREVENTERS TO BE ALL STEEL HOSE OR PIPE A MINIMUM OF ONE INCH IN DIAMETER.
- D. THE AVAILABLE CLOSING PRESSURE SHALL BE AT LEAST 15% IN EXCESS OF THAT REQUIRED WITH SUFFICIENT VOLUME TO OPERATE THE B.O.P.
- E. ALL CONNECTIONS TO AND FROM PREVENTER TO HAVE A PRESSURE RATING EQUIVALENT TO THAT OF THE B.O.P.'S.
- F. MANUAL CONTROLS TO BE INSTALLED BEFORE DRILLING CEMENT PLUG.
- G. KELLY COCK TO BE INSTALLED ON KELLY.
- H. INSIDE BLOWOUT PREVENTER TO BE AVAILABLE ON RIG FLOOR.
- I. DUAL OPERATING CONTROLS ONE LOCATED BY DRILLERS POSITION AND THE OTHER LOCATED A SAFE DISTANCE FROM THE RIG FLOOR.

BEPCO IV
 THREE CLOSURE HYDRAULIC BLOWOUT PREVENTERS

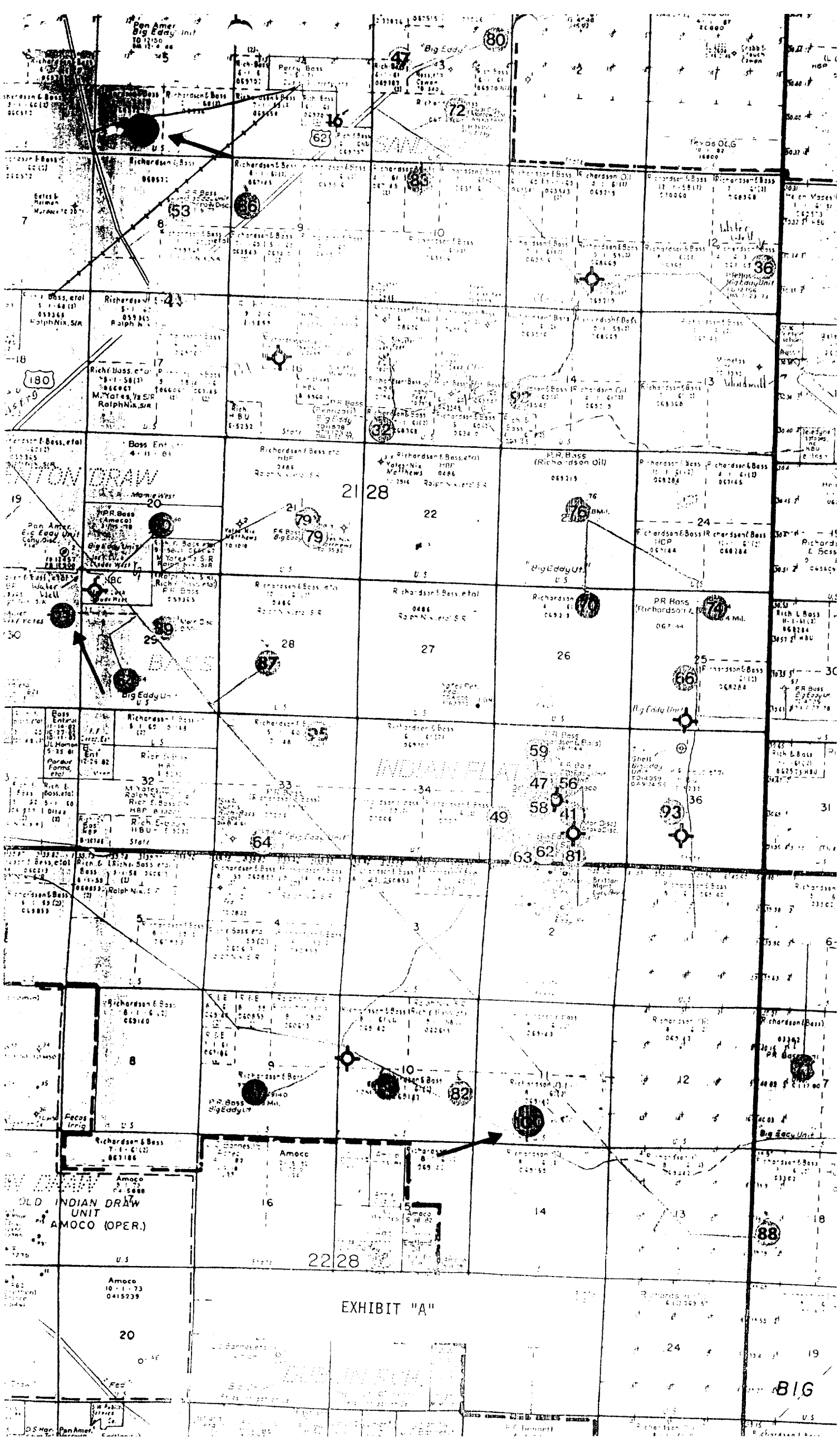


EXHIBIT "A"

OLD INDIAN DRAW UNIT
AMOCO (OPER.)

816

20

22 28

88

7

6

31

30

28

18

7

80

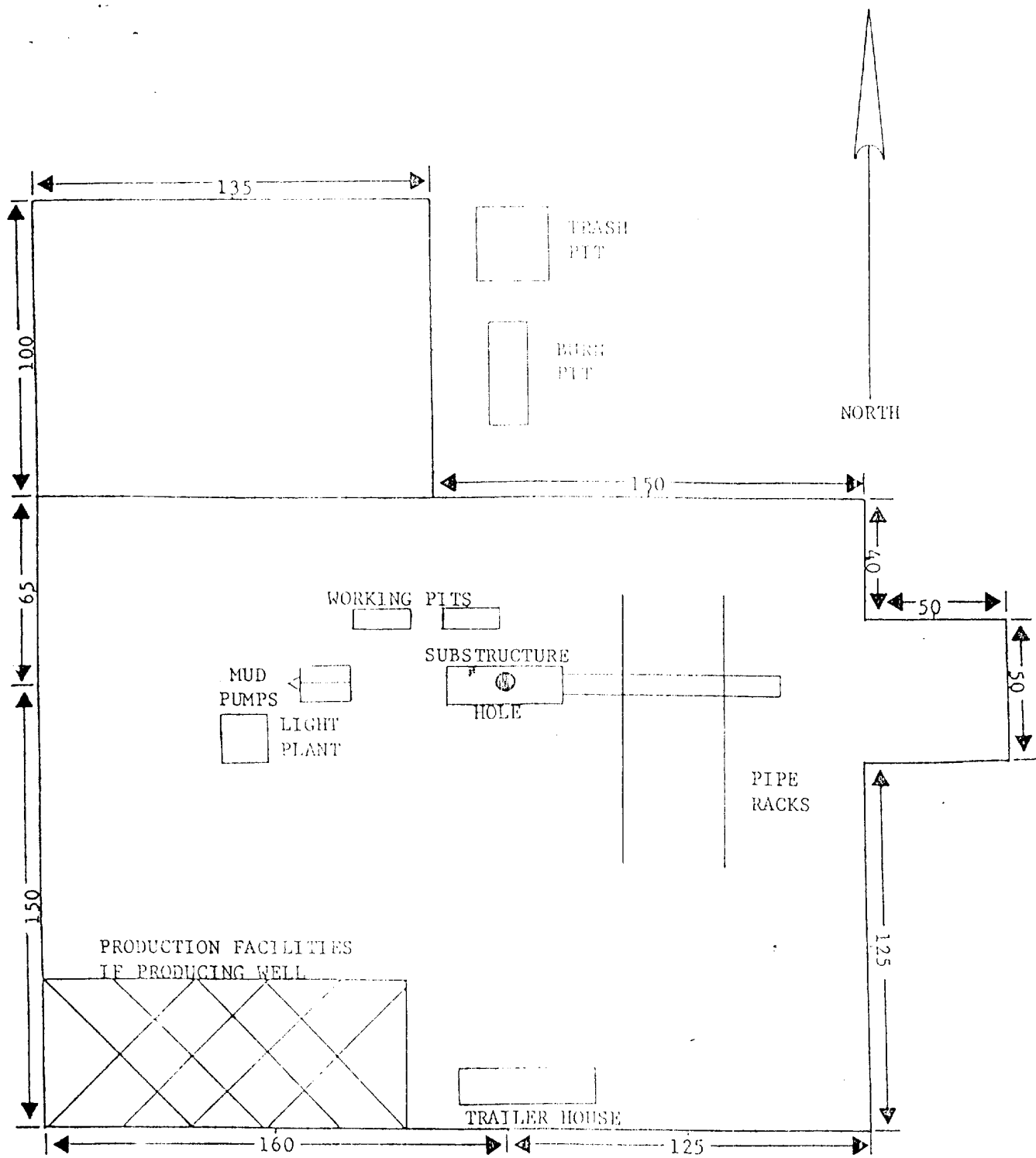


EXHIBIT "B"