

UNITED STATES  
DEPARTMENT OF THE INTERIOR  
BUREAU OF LAND MANAGEMENT

30-015-25704  
5. LEASE DESIGNATION AND SERIAL NO.

NM-27981

6. IF INDIAN, ALLOTTEE OR TRIBE NAME

7. UNIT AGREEMENT NAME

SUNEX FEDERAL

8. FARM OR LEASE NAME

9. WELL NO.

4

10. FIELD AND POOL, OR WILDCAT  
Und. N. Ross Draw -  
EAST BRUSHY DRAW DELAWARE

11. SEC., T., R., M., OR BLK.  
AND SURVEY OR AREA

Sec. 14, T-26-S, R-30-E

12. COUNTY OR PARISH

13. STATE  
NEW MEXICO

EDDY

17. NO. OF ACRES ASSIGNED  
TO THIS WELL

40

20. ROTARY OR CABLE TOOLS

Rotary

22. APPROX. DATE WORK WILL START\*

December 15, 1986

1a. TYPE OF WORK

DRILL ☒

DEEPEN ☐

PLUG BACK ☐

b. TYPE OF WELL

OIL  
WELL ☒

GAS  
WELL ☐

OTHER

SINGLE  
ZONE ☐

MULTIPLE  
ZONE ☐

2. NAME OF OPERATOR

J.C. WILLIAMSON

3. ADDRESS OF OPERATOR

890 ONE FIRST CITY CENTER

MIDLAND, TX 79701

4. LOCATION OF WELL (Report location clearly and in accordance with any State requirements\*)

At surface

660' FWL & 1980' FSL

At proposed prod. zone

same

14. DISTANCE IN MILES AND DIRECTION FROM NEAREST TOWN OR POST OFFICE\*

17 miles SE of Malaga, NM

15. DISTANCE FROM PROPOSED\*

LOCATION TO NEAREST

PROPERTY OR LEASE LINE, FT.

(Also to nearest drlg. unit line, if any)

660'

18. DISTANCE FROM PROPOSED LOCATION\*

TO NEAREST WELL, DRILLING, COMPLETED,  
OR APPLIED FOR, ON THIS LEASE, FT.

1600'

16. NO. OF TESTS IN TEST

2200

19. PROPOSED DEPTH

7000'

21. ELEVATIONS (Show whether DF, RT, GR, etc.)

3152.4 GR

23.

PROPOSED CASING AND CEMENTING PROGRAM

SIZE OF HOLE	SIZE OF CASING	WEIGHT PER FOOT	SETTING DEPTH	QUANTITY OF CEMENT
17-1/2"	13-3/8"	54.5#	800'	800 sx to circulate
11"	8-5/8"	24# & 32#	3400'	250 sx CIRCULATE
7-7/8"	5-1/2"	15.5#	7000'	1000 sx in 2 stages

IN ABOVE SPACE DESCRIBE PROPOSED PROGRAM: If proposal is to deepen or plug back, give data on present productive zone and proposed new productive zone. If proposal is to drill or deepen directionally, give pertinent data on subsurface locations and measured and true vertical depths. Give blowout preventer program, if any.

24.

SIGNED

Jan Pfister

TITLE

Production

DATE

12/03/86

(This space for Federal or State office use)

PERMIT NO.

APPROVAL DATE

APPROVED BY

TITLE

DATE

12-19-86

CONDITIONS OF APPROVAL, IF ANY:

APPROVAL SUBJECT TO  
GENERAL REQUIREMENTS AND  
SPECIAL STIPULATIONS  
ATTACHED

\*See Instructions On Reverse Side

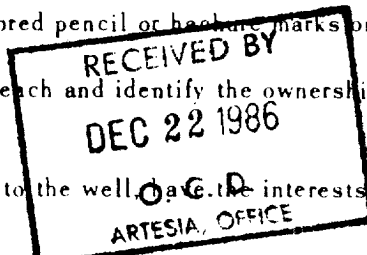
**MEXICO OIL CONSERVATION COMMISSION**  
**WELL LOCATION AND ACREAGE DEDICATION PLAT**

Form C-102  
 Supersedes C-128  
 Effective 1-1-65

All distances must be from the outer boundaries of the Section

Operator <b>J. C. Williamson</b>			Lease <b>Sun Ex. Unit Fed</b>		Well No. <b># 4</b>
Tract Letter <b>L</b>	Section <b>14</b>	Township <b>26 South</b>	Range <b>30 East</b>	County <b>Eddy</b>	
Actual Footage Location of Well:					
660 feet from the West line and		1980 feet from the South line			
Ground Level Elev. <b>3152.4</b>	Producing Formation <b>Delaware</b>		Well <b>Und. N. Ross Draw</b> <del>Brushy Draw Delaware, East</del>		Dedicated Acreage: <b>40</b> Acres

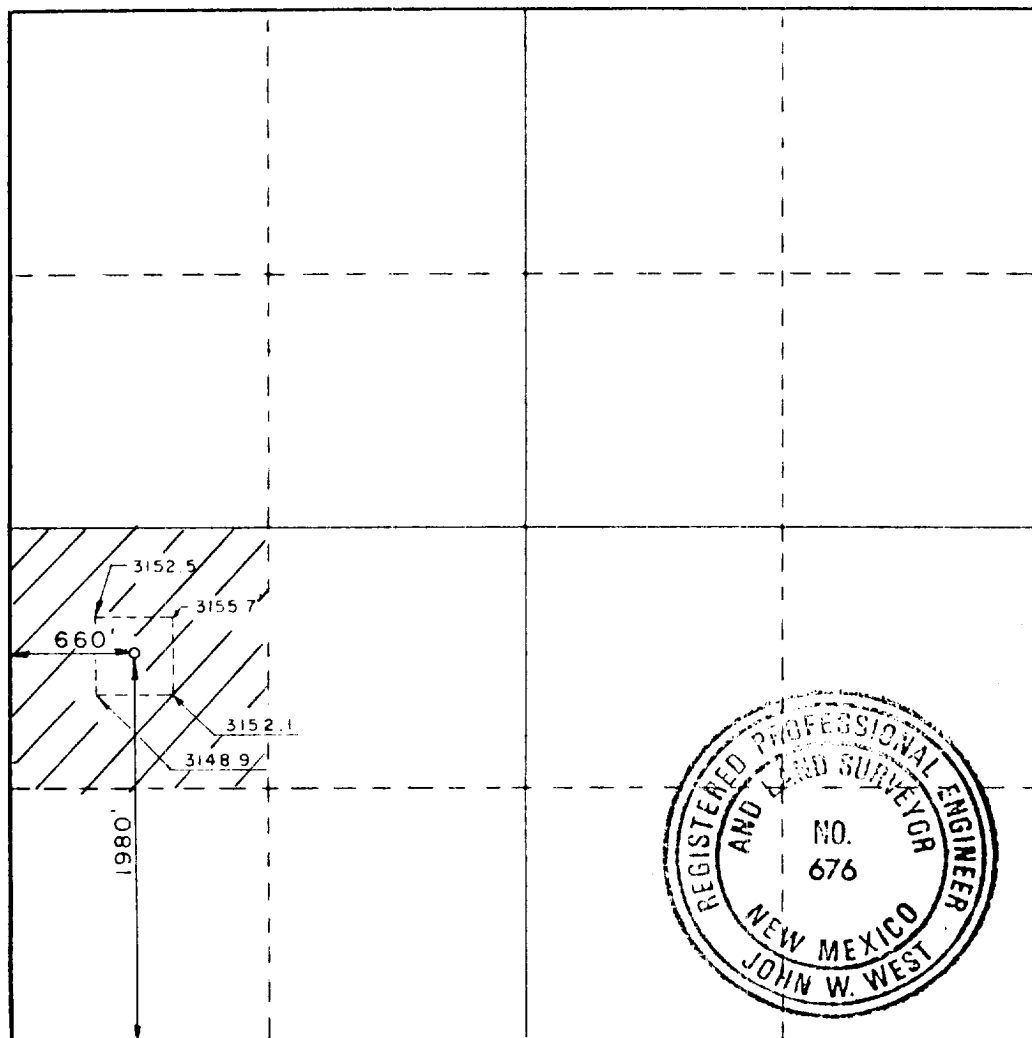
1. Outline the acreage dedicated to the subject well by colored pencil or black ink marks on the plat below.
2. If more than one lease is dedicated to the well, outline each and identify the ownership thereof (both as to working interest and royalty).
3. If more than one lease of different ownership is dedicated to the well, are the interests of all owners been consolidated by communitization, unitization, force-pooling, etc?



☐ Yes ☐ No If answer is "yes," type of consolidation \_\_\_\_\_

If answer is "no," list the owners and tract descriptions which have actually been consolidated. (Use reverse side of this form if necessary.) \_\_\_\_\_

No allowable will be assigned to the well until all interests have been consolidated (by communitization, unitization, forced-pooling, or otherwise) or until a non-standard unit, eliminating such interests, has been approved by the Commission.



**CERTIFICATION**

I hereby certify that the information contained herein is true and complete to the best of my knowledge and belief.

Name: **Jan Pfister**

Position: **Production**

Company: **J.C. Williamson**

Date: **November 17, 1986**

I hereby certify that the well location shown on this plat was plotted from field notes of actual surveys made by me or under my supervision, and that the same is true and correct to the best of my knowledge and belief.

Date Surveyed: **October 24, 1986**

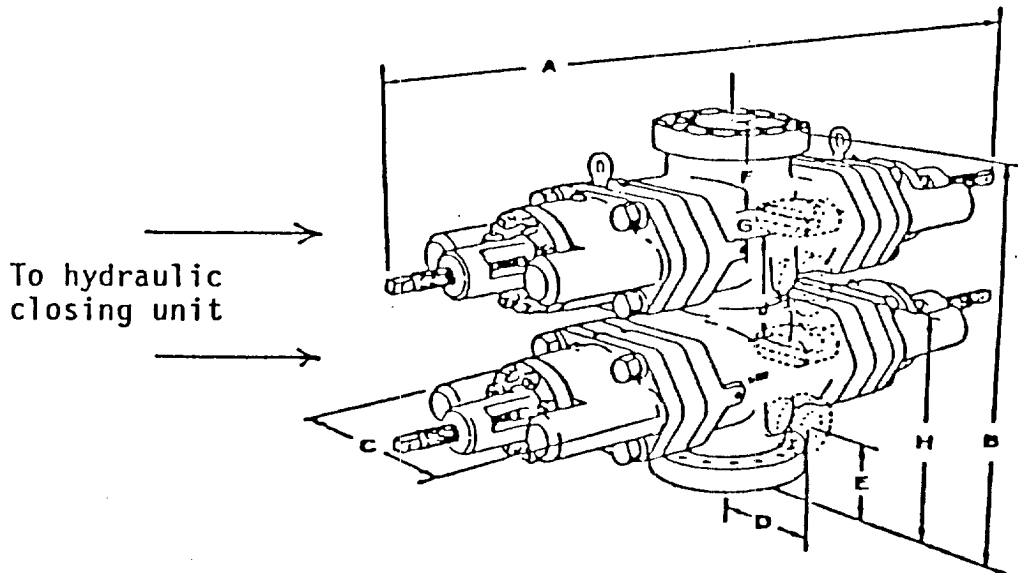
Registered Professional Engineer and/or Land Surveyor

Certificate No. **JOHN W. WEST, 676**  
**RONALD J. EIDSON, 3239**

## EXHIBIT "E"

### BOP Diagram

After 13-3/8" surface casing has been set and cement circulated to the surface, an 11" double ram BOP, as shown below well be put on the hole. This blowout preventer will be connected to a hydraulically controlled closing unit. The pressure rating on this BOP is 3000#, and will have blank and 5-1/2" pipe rams.



J.C. WILLIAMSON  
SUN EX FEDERAL UNIT # 4  
Sec. 14, T-26-S, R-30-E  
EDDY COUNTY, NEW MEXICO

## SUPPLEMENTAL DRILLING DATA

J.C. WILLIAMSON  
WELL SUN EX FEDERAL NO.4

1. SURFACE FORMATION: Recent

2. ESTIMATED TOPS OF GEOLOGIC MARKERS:

Rustler	550'
T/Salt	930'
B/Salt	3400'
Delaware Mt. Grp.	3650'

3. ANTICIPATED POSSIBLE WATER AND HYDROCARBON BEARING ZONES:

Fresh Water	200'
Lower Delaware (oil)	6500'

4. PROPOSED CASING AND CEMENTING PROGRAM:

Casing program is shown on Form 9-331 C.

Hole for surface casing will be drilled to a depth below fresh water zones. 13-3/8" surface casing will be run to 800 feet, below all fresh water zones and will be circulated to the surface with 800 sacks of Class "C" cement.

8-5/8" casing will be run and cemented at 3400 feet, prior to entering delaware section and will be cemented with 250 sacks of Class "C" cement or sufficient to raise cement into the base of the lower salt.

5-1/2" casing will be run to total depth and will be cemented with 1000 sx in 2 stages w/DV tool @ 5300'+-; all pay zones will be covered by cement.

5. PRESSURE CONTROL EQUIPMENT:

A. Wellhead Equipment - Flanged type, 3000 psi WP for 13-3/8" X 8-5/8" X 5-1/2" casing program with 2-3/8" tubing anchor.

Pressure control equipment will consist of a 3000# double ram hydraulically controlled blow out preventer and a 3000# choke manifold. See Exhibit "E"

6. CIRCULATING MEDIUM:

The circulating medium will be fresh water down to 800 feet and brine water in the rest of the hole, once the water saturates itself naturally with salt.

7. AUXILIARY EQUIPMENT:

A. Kelly cocks: Upper installed on Kelly.

B. A full opening ball type valve to fit each type and size of drill pipe in use will be available on rig floor at all times. The valves will be in the open position for stabbing into drill pipe when Kelly is not is the string.

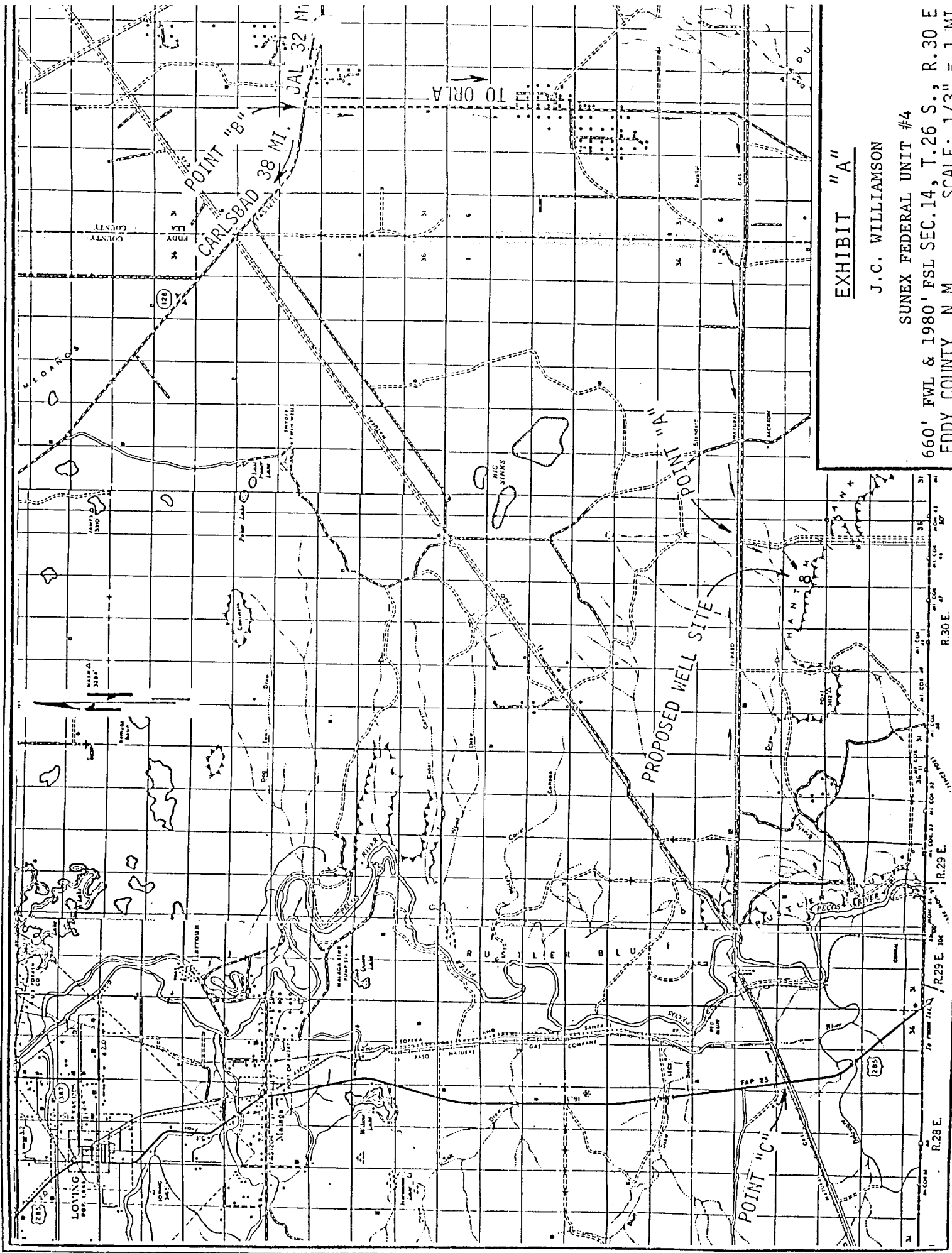
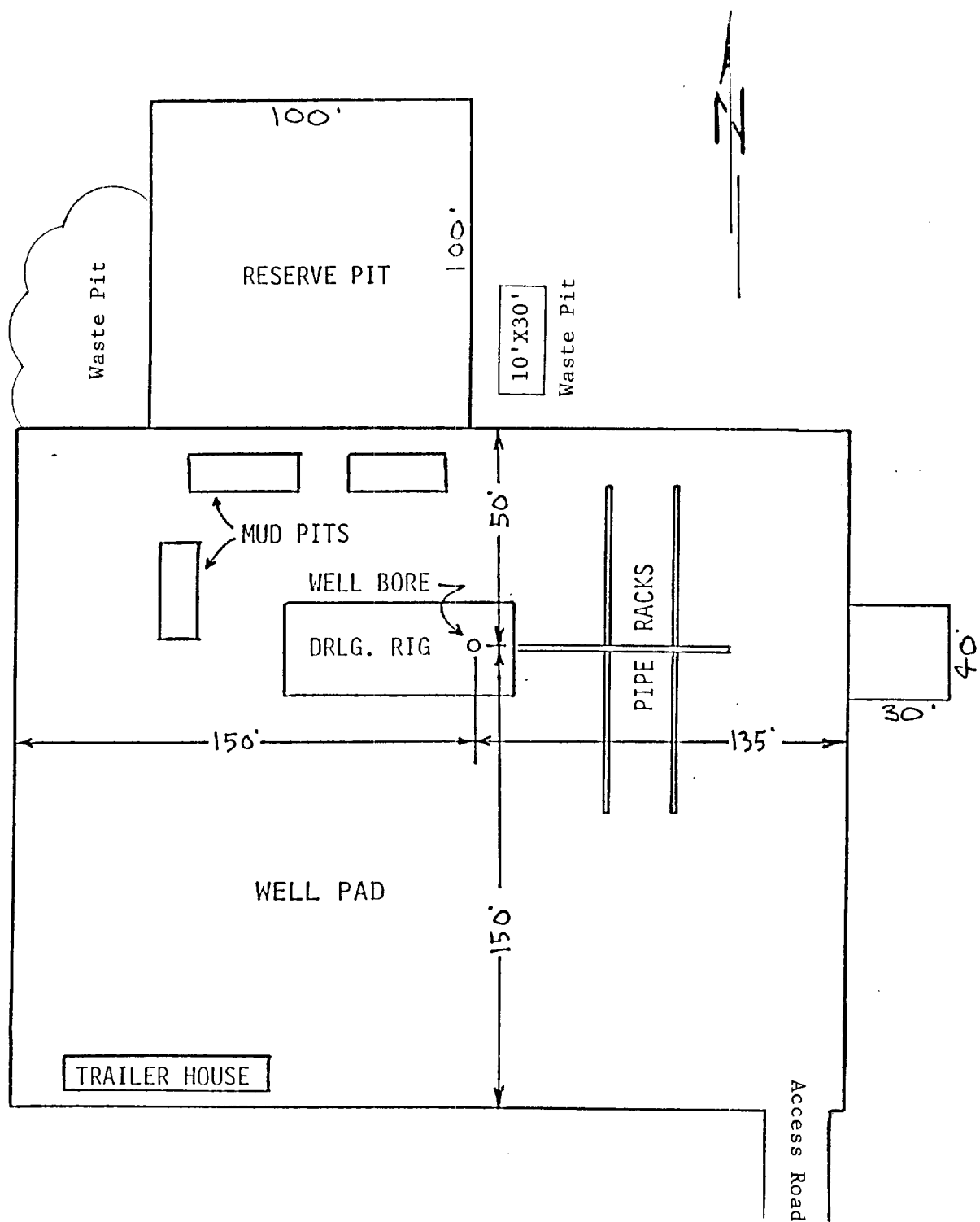


EXHIBIT "A"

J. C. WILLIAMSON

SUNEX FEDERAL UNIT #4

660' FWL & 1980' FSL SEC. 14, T. 26 S., R. 30 E.  
EDDY COUNTY, N.M. SCALE: 1/3" = 1 MI



# EXHIBIT "D"

J.C. WILLIAMSON  
SUNEX FEDERAL UNIT #4

DRILLING RIG LAYOUT  
SCALE: None