

NO. OF COPIES RECEIVED	
DISTRIBUTION	
SANTA FE	✓
FILE	✓
U.S.G.S.	✓
LAND OFFICE	✓
OPERATOR	✓

NEW MEXICO OIL CONSERVATION COMMISSION

RECEIVED

30-015-26043
Form C-101
Revised 1-1-65

DEC 21 '88

O. C. D.
ARTESIA, OFFICE

5A. Indicate Type of Lease	
STATE <input checked="" type="checkbox"/>	FEE <input type="checkbox"/>
5. State Oil & Gas Lease No.	
K-4222	

APPLICATION FOR PERMIT TO DRILL, DEEPEN, OR PLUG BACK

1a. Type of Work				7. Unit Agreement Name	
b. Type of Well OIL WELL <input checked="" type="checkbox"/> GAS WELL <input type="checkbox"/> OTHER <input type="checkbox"/>				8. Farm or Lease Name	
2. Name of Operator Morexco, Inc.				9. Well No. 4	
3. Address of Operator P. O. Box 481, Artesia, NM 88211-0481				10. Field and Pool, or Willcat Und. W. Millman-GR	
4. Location of Well UNIT LETTER O LOCATED 330' FEET FROM THE South LINE AND 2310' FEET FROM THE East LINE OF SEC. 12 TWP. 19S RGE. 27E NMPM				12. County Eddy	
19. Proposed Depth 2400'				19A. Formation	
21. Elevations (Show whether DF, RT, etc.) 3485' Grd.				20. Rotary or C.T. Rotary	
21A. Kind & Status Plug. Bond Blanket		21B. Drilling Contractor United Drilling		22. Approx. Date Work will start December 22, 1988	

23.

PROPOSED CASING AND CEMENT PROGRAM

SIZE OF HOLE	SIZE OF CASING	WEIGHT PER FOOT	SETTING DEPTH	SACKS OF CEMENT	EST. TOP
12 1/4"	8 5/8"	24#	320'	300 sxs.	
7 7/8"	5 1/2"	10.5-15.5 #	2400'	450 sxs.	

Plan to spud Und. West Millman-Grayburg test on December 22, 1988 with a 12 1/4" bit. Set 320' of 8 5/8" with 300 sxs. Drill out with a 7 7/8" bit with 10# brine to a total depth of 2400' or less. If commercial shows are present, 5 1/2" casing will be set with 450 sxs. or sufficient to circulate to surface. If dry hole, proper plugs will be set as directed by the N.M.O.C.D.

IN ABOVE SPACE DESCRIBE PROPOSED PROGRAM: IF PROPOSAL IS TO DEEPEN OR PLUG BACK, GIVE DATA ON PRESENT PRODUCTIVE ZONE AND PROPOSED NEW PRODUCTIVE ZONE. GIVE BLOWOUT PREVENTER PROGRAM, IF ANY.

I hereby certify that the information above is true and complete to the best of my knowledge and belief.

Signed Bucky Olson Title Agent Date 12-21-88

(This space for State Use)

APPROVED BY [Signature] TITLE Agent DATE DEC 22 1988

CONDITIONS OF APPROVAL, IF ANY:

85/6

NEW MEXICO OIL CONSERVATION COMMISSION
WELL LOCATION AND ACREAGE DEDICATION PLAT

Form C-102
Supersedes C-128
Effective 1-1-65

All distances must be from the outer boundaries of the Section.

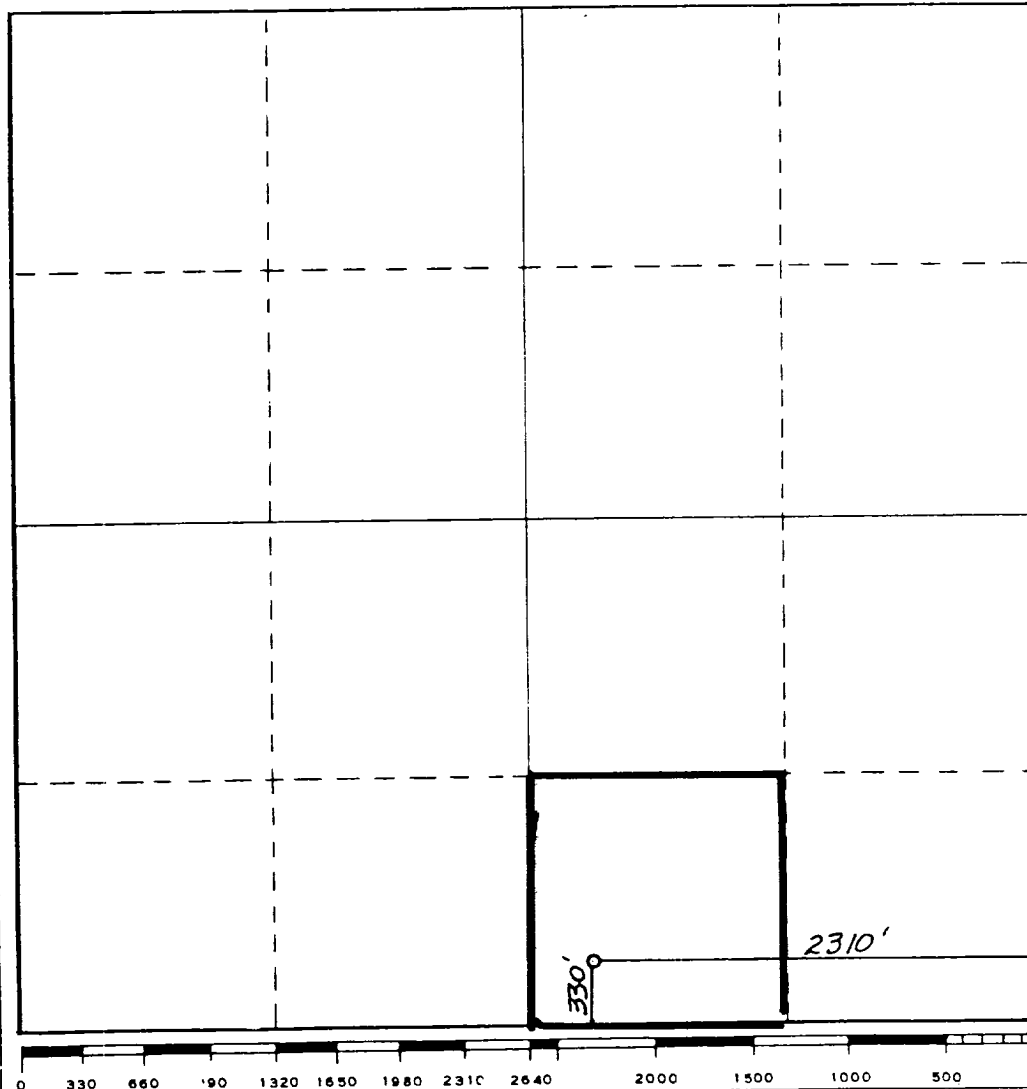
Operator Morexco, Inc.			Lease J M D State		Well No. 4
Unit Letter 0	Section 12	Township 19 South	Range 27 East	County Eddy	
Actual Footage Location of Well: 330 feet from the South line and 2310 feet from the East line					
Ground Level Elev. 3485.	Producing Formation		Pool Und. West Millman-GR		Dedicated Acreage: 40 Acres

1. Outline the acreage dedicated to the subject well by colored pencil or hachure marks on the plat below.
2. If more than one lease is dedicated to the well, outline each and identify the ownership thereof (both as to working interest and royalty).
3. If more than one lease of different ownership is dedicated to the well, have the interests of all owners been consolidated by communitization, unitization, force-pooling, etc?

☐ Yes ☒ No If answer is "yes," type of consolidation _____

If answer is "no," list the owners and tract descriptions which have actually been consolidated. (Use reverse side of this form if necessary.) _____

No allowable will be assigned to the well until all interests have been consolidated (by communitization, unitization, forced-pooling, or otherwise) or until a non-standard unit, eliminating such interests, has been approved by the Commission.



CERTIFICATION

I hereby certify that the information contained herein is true and complete to the best of my knowledge and belief.

Becky Olson
Name

Becky Olson

Position

Agent

Company

Morexco, Inc.

Date

December 21, 1988

DAN R. REDDY
NEW MEXICO
REGISTERED PROFESSIONAL ENGINEER
AND SURVEYOR
5412

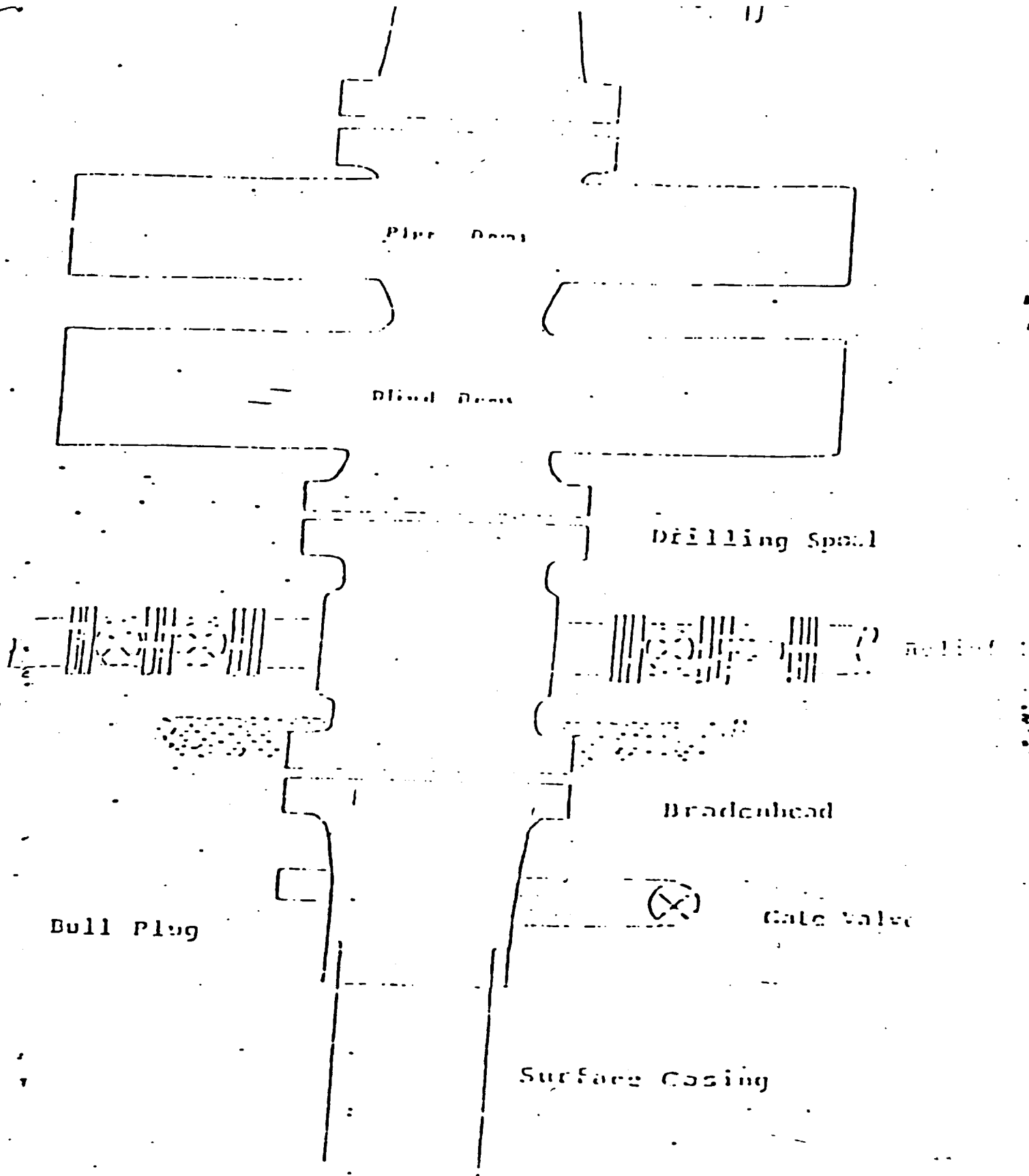
Date Surveyed

October 8, 1987

Registered Professional Engineer
and/or Land Surveyor

Dan R. Reddy
Certificate No.

NM PE&LS NO, 5412



Series 900 Double Gate BOP, rated
at 3000 psi Working Pressure

BLOWOUT PREVENTER ASSEMBLY