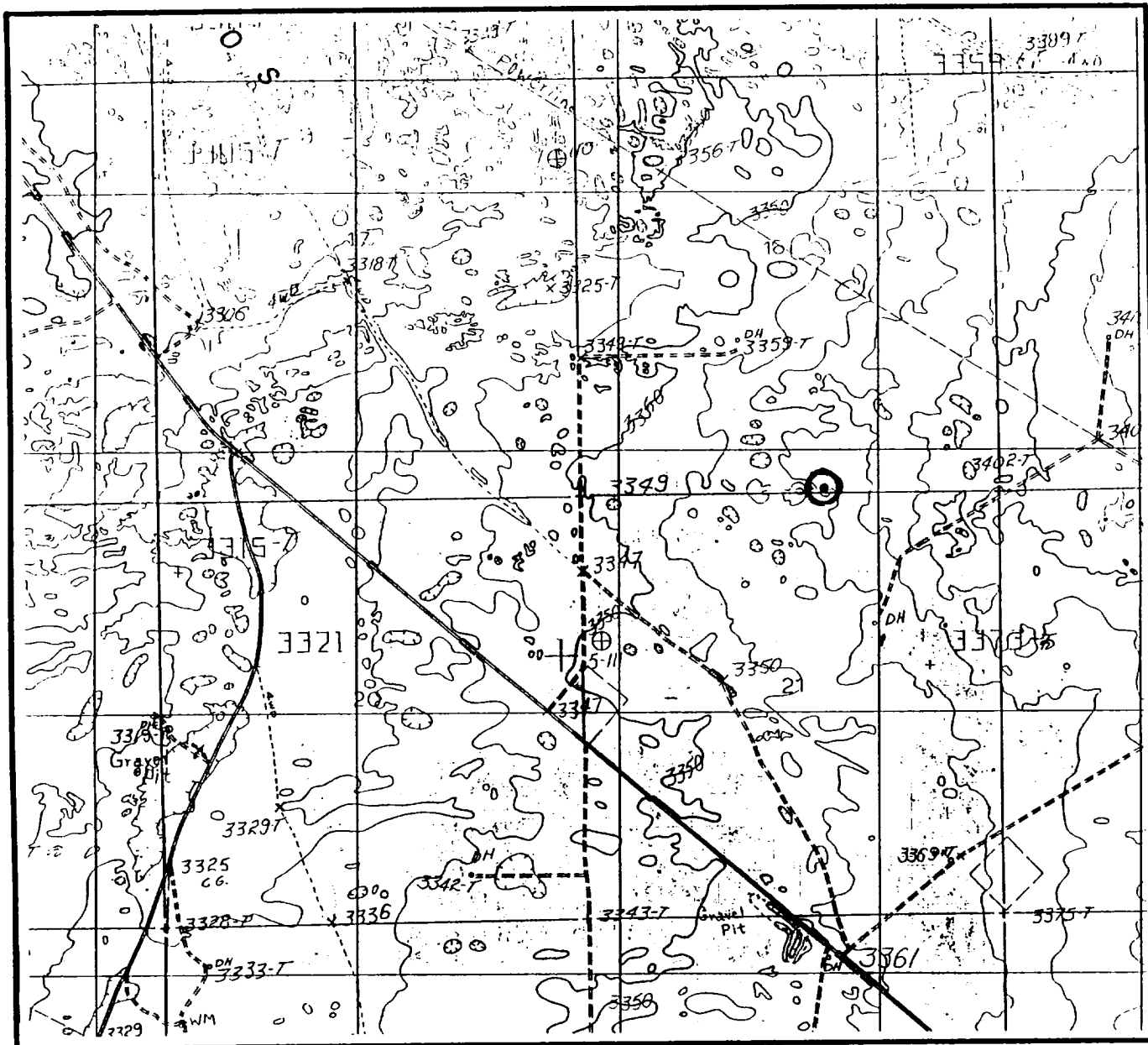


# LOCATION & ELEVATION VERIFICATION MAP

Exhibit D  
 Kaiser-Francis Oil Company  
 Pure Gold "A" Fed #14  
 Eddy County, New Mexico



SCALE : 1" = 2000'

CONTOUR INTERVAL 10'

SECTION 16 TWP 23-S RGE 31-E

SURVEY NEW MEXICO PRINCIPAL MERIDIAN

COUNTY EDDY STATE NM

DESCRIPTION 10' FSL & 2160' FEL

ELEVATION 3372'

OPERATOR KAISER - FRANCIS OIL COMPANY

LEASE PURE GOLD "A" FED #14

U.S.G.S. TOPOGRAPHIC MAP  
LOS MEDANOS, NEW MEXICO

SCALED LAT. N 32°17'50"

LONG. W 103°46'49"



This location has been very carefully staked on the ground according to the best official survey records, maps, and other data available to us.  
 Review this plot and notify us immediately of any possible discrepancy.

## TOPOGRAPHIC LAND SURVEYORS

*Surveying & Mapping for the Oil & Gas Industry*

1307 N. HOBART  
 PAMPA, TX. 79065  
 (800) 658-6382

6709 N. CLASSEN BLVD.  
 OKLAHOMA CITY, OK. 73116  
 (800) 654-3219

2903 N. BIG SPRING  
 MIDLAND, TX. 79705  
 (800) 767-1653