

DISTRICT I
P. O. Box 1980, Hobbs, NM 88240

DISTRICT II
P. O. Drawer DD, Artesia, NM 88210

DISTRICT III
1000 Rio Brazos Rd., Aztec, NM 87410

DISTRICT IV
P. O. Box 2088, Santa Fe, NM 87504-2088

State of New Mexico
Energy, Minerals and Natural Resources Department

Form C-102
Revised February 10, 1994

Instructions on back

OIL CONSERVATION DIVISION
PO Box 2088
Santa Fe, NM 87504-2088

Submit to Appropriate District Office

State Lease-4 copies
Fee Lease-3 copies

AMENDED REPORT

WELL LOCATION AND ACREAGE DEDICATION PLAT

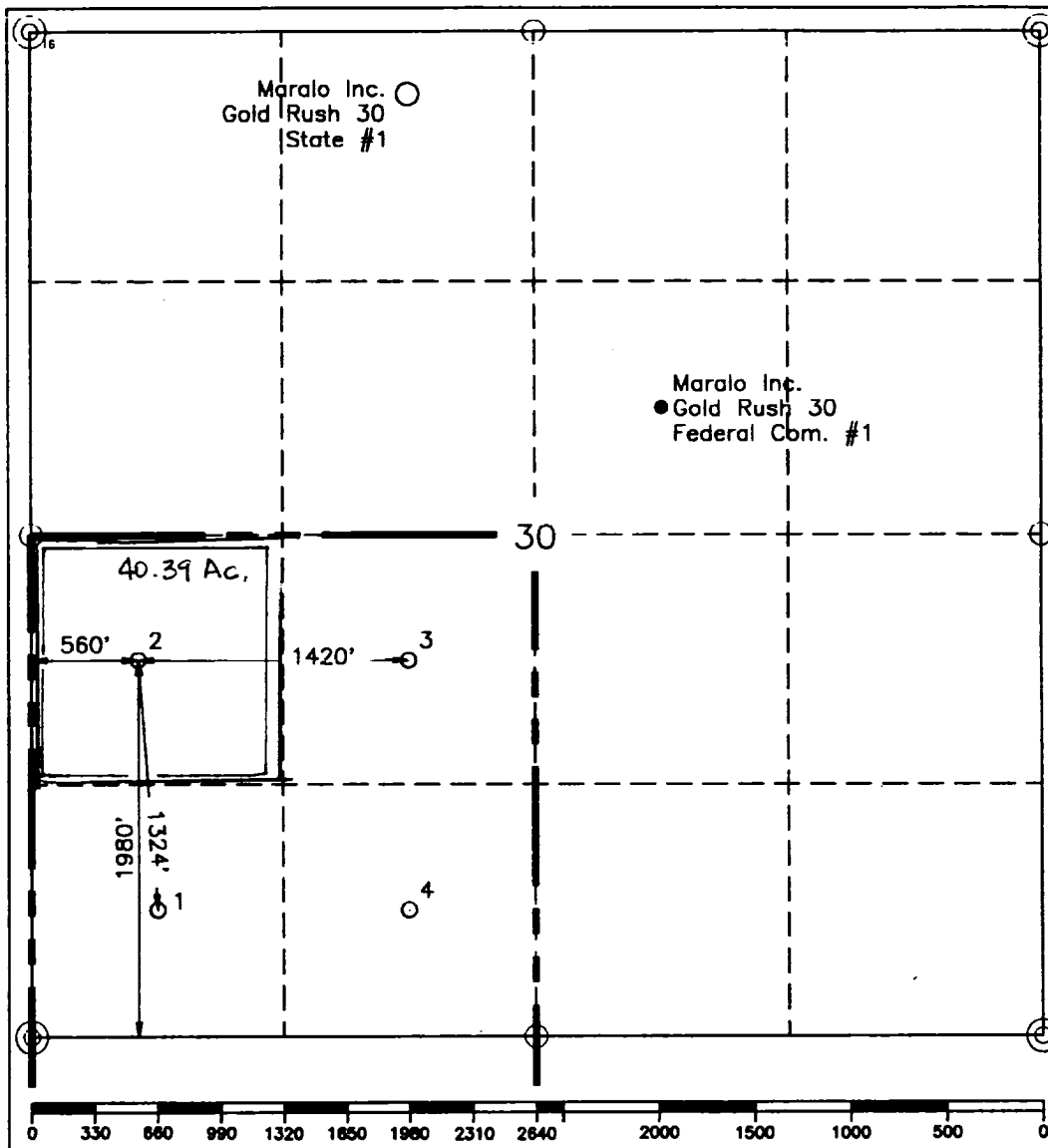
¹ API Number 30-015-28350	² Pool Code 96035	³ Pool Name Undesignated Wilcatt; G.P. 4
⁴ Property Code	⁵ Property Name Remuda Basin "30" State	⁶ Well Number 2
⁷ OGRID No. 22351	⁸ Operator Name TEXACO EXPLORATION & PRODUCTION, INC.	⁹ Elevation 3094

¹⁰ Surface Location									
UL or lot no. K3	Section 30	Township 23-S	Range 30-E	Lot ldn	Feet from the 1980'	North/South line South	Feet from the 560'	East/West line West	⁷ County Eddy

¹¹ Bottom Hole Location if Different From Surface									
UL or lot no.	Section	Township	Range	Lot ldn	Feet from the	North/South line	Feet from the	East/West line	⁷ County

¹² Dedicated Acres 40.39	¹³ Joint or Infill	¹⁴ Consolidation Code	¹⁵ Order No.
--	-------------------------------	----------------------------------	-------------------------

NO ALLOWABLE WILL BE ASSIGNED TO THIS COMPLETION UNTIL ALL INTERESTS HAVE BEEN CONSOLIDATED
OR A NON-STANDARD UNIT HAS BEEN APPROVED BY THE DIVISION.



¹⁷OPERATOR CERTIFICATION I hereby certify that the information contained herein is true and complete to the best of my knowledge and belief.
Signature <i>C. Wade Howard</i>
Printed Name C. Wade Howard
Position Engineer Technician
Company Texaco Expl. & Prod. Inc.
Date February 6, 1995
¹⁸SURVEYOR CERTIFICATION I hereby certify that the well location shown on this plat was plotted from field notes of actual surveys made by me or under my supervision and that the same is true and correct to the best of my knowledge and belief.
Date Surveyed January 30, 1995
Signature & Seal of Professional Surveyor <i>John S. Piper</i>
Certificate No. 7254 John S. Piper
Sheet

○ = Staked Location ● = Producing Well ● = Injection Well ○ = Water Supply Well ◆ = Plugged & Abandon Well
⊙ = Found Section Corner 2 or 3" Iron Pipe & G.I.O. B.C. ○ = Found 1/4 Section Corner 1" Iron Pipe & G.I.O. B.C.