

UNITED STATES
DEPARTMENT OF THE INTERIOR
BUREAU OF LAND MANAGEMENT

SUBMIT IN TRIPLICATE

(See other instructions
reverse side)

Form approved.

CBF

APPLICATION FOR PERMIT TO DRILL OR DEEPEN

RECEIVED

5. LEASE DESIGNATION AND SERIAL NO.

NM-NM-0400877

6. IF INDIAN, ALLOTTEE OR TRIBE NAME

N/A

7. UNIT AGREEMENT NAME

N/A

8. FARM OR LEASE NAME, WELL NO.

Cactus "90" Federal #1 18771

9. API WELL NO.

30-015- 28900

10. FIELD AND POOL, OR WILDCAT

Catclaw Draw, East (Delaware) 10500

11. SEC., T., R., M., OR BLOCK AND SURVEY OR AREA

Unit O, Sec. 9-T21S-R26E

1a. TYPE OF WORK: DRILL DEEPEN

1b. TYPE OF WELL: OIL WELL GAS WELL Other SINGLE ZONE MULTIPLE ZONE MAR 23 1996

2. NAME OF OPERATOR: DEVON ENERGY CORPORATION (NEVADA) 6137 OIL CON. DIV.

3. ADDRESS AND TELEPHONE NO.: 20 N. BROADWAY, SUITE 1500, OKC, OK 73102 (405) 235-3613

4. LOCATION OF WELL (Report location clearly and in accordance with any State requirements):
At surface 397' FSL & 2451' FEL UNORTHODOX LOCATION:
At top proposed prod. zone (SAME) Subject to Like Approval Unit 0

14. DISTANCE IN MILES AND DIRECTION FROM NEAREST TOWN OR POST OFFICE:
5 miles NW of Carlsbad, NM

15. DISTANCE FROM PROPOSED LOCATION TO NEAREST PROPERTY OR LEASE LINE, FT. 189'

16. NO. OF ACRES IN LEASE 160

18. DISTANCE FROM PROPOSED LOCATION* TO NEAREST WELL, DRILLING, COMPLETED, OR APPLIED FOR, ON THIS LEASE, FT. 539'

19. PROPOSED DEPTH 4300'

21. ELEVATIONS (Show whether DF, RT, GR, etc.):
GL 3287' Roswell Controlled Water Basin

12. COUNTY OR PARISH Eddy

13. STATE New Mexico

20. ROTARY OR CABLE TOOLS* Rotary

22. APPROX. DATE WORK WILL START* February, 1996

23. PROPOSED CASING AND CEMENTING PROGRAM

SIZE OF HOLE	GRADE, SIZE OF CASING	WEIGHT PER FOOT	SETTING DEPTH	QUANTITY OF CEMENT
17 1/2"	13 3/8" H-40	48#	350'	375 sx Class C CIRCULATE
12 1/4"	8 5/8" J-55	24#	2200'	710 sx 35:65 Poz-C + 200 sx Class C
7 7/8"	5 1/2" J-55	15.5#	4300'	1st Stage 350 sx Class C 2nd Stage 200 sx 35:65 Poz-C + 100 sx Class C

Devon Energy proposes to drill to approximately 3500' to test the Delaware for commercial quantities of oil. If the Delaware is deemed non-commercial, the wellbore will be plugged and abandoned as per Federal regulations. Programs to adhere to onshore oil and gas regulations are outlined in the following exhibits and attachments.
This is an unorthodox location. Please be advised Devon Energy will apply for like approval from the NMOCD.

- Drilling Program:
Surface Use and Operating Plan
Exhibit #1/1-A - Blowout Prevention Equipment
Exhibit #2 - Location and Elevation Plat
Exhibit #3 - Planned Access Roads
Exhibit #4 - Wells Within One Mile Radius
Exhibit #5 - Production Facilities Plat
Exhibit #6 - Rotary Rig Layout

- Exhibit #7 - Casing Program
H2S Plan

Evidence of Bond Coverage
Bond Coverage: Nationwide
BLM Bond No. CO-1104

Approval Subject to General Requirements and Special Stipulations Attached

NSL-3630

Post ID-1
4-5-96
New Loc + API

IN ABOVE SPACE DESCRIBE PROPOSED PROGRAM: If proposal is to deepen, give data on present productive zone and proposed new productive zone. If proposal is to drill or deepen directionally, give pertinent data on subsurface locations and measured and true vertical depths. Give blowout preventer program, if any.

SIGNED Gerald T. Pepper

Gerald T. Pepper
TITLE District Engineer

DATE December 14, 1995

*(This space for Federal or State office use)

PERMIT NO. _____ APPROVAL DATE _____

Application approval does not warrant or certify that the applicant holds legal or equitable title to those rights in the subject lease which would entitle the applicant to conduct operations thereon.

CONDITIONS OF APPROVAL, IF ANY:
/s/ Yolanda Vega
APPROVED BY _____ TITLE ASSISTANT AREA MANAGER DATE 3-25-96

See Instructions On Reverse Side

Title 18 U.S.C. Section 1001, makes it a crime for any person knowingly and willfully to make to any department or agency of the United States any false, fictitious or fraudulent statements or representations as to any matter within its jurisdiction

DISTRICT I
P. O. Box 1980
Hobbs, NM 88241-1980

Instructions on back

DISTRICT II
P. O. Drawer DD
Artesia, NM 88211-0719

OIL CONSERVATION DIVISION
P. O. Box 2088
Santa Fe, New Mexico 87504-2088

Submit to the Appropriate
District Office
State Lease - 4 copies
Fee Lease - 3 copies

DISTRICT III
1000 Rio Brazos Rd.
Aztec, NM 87410

AMENDED REPORT

DISTRICT IV
P. O. Box 2088
Santa Fe, NM 87507-2088

WELL LOCATION AND ACREAGE DEDICATION PLAT

¹ API Number 30-015-28900		² Pool Code 10500		³ Pool Name Catclaw Draw; East (Delaware)	
⁴ Property Code		⁵ Property Name CACTUS '9-0' FEDERAL			⁶ Well Number 1
⁷ OGRID No. 6137		⁸ Operator Name DEVON ENERGY CORPORATION (NEVADA)			⁹ Elevation 3287'

¹⁰ SURFACE LOCATION

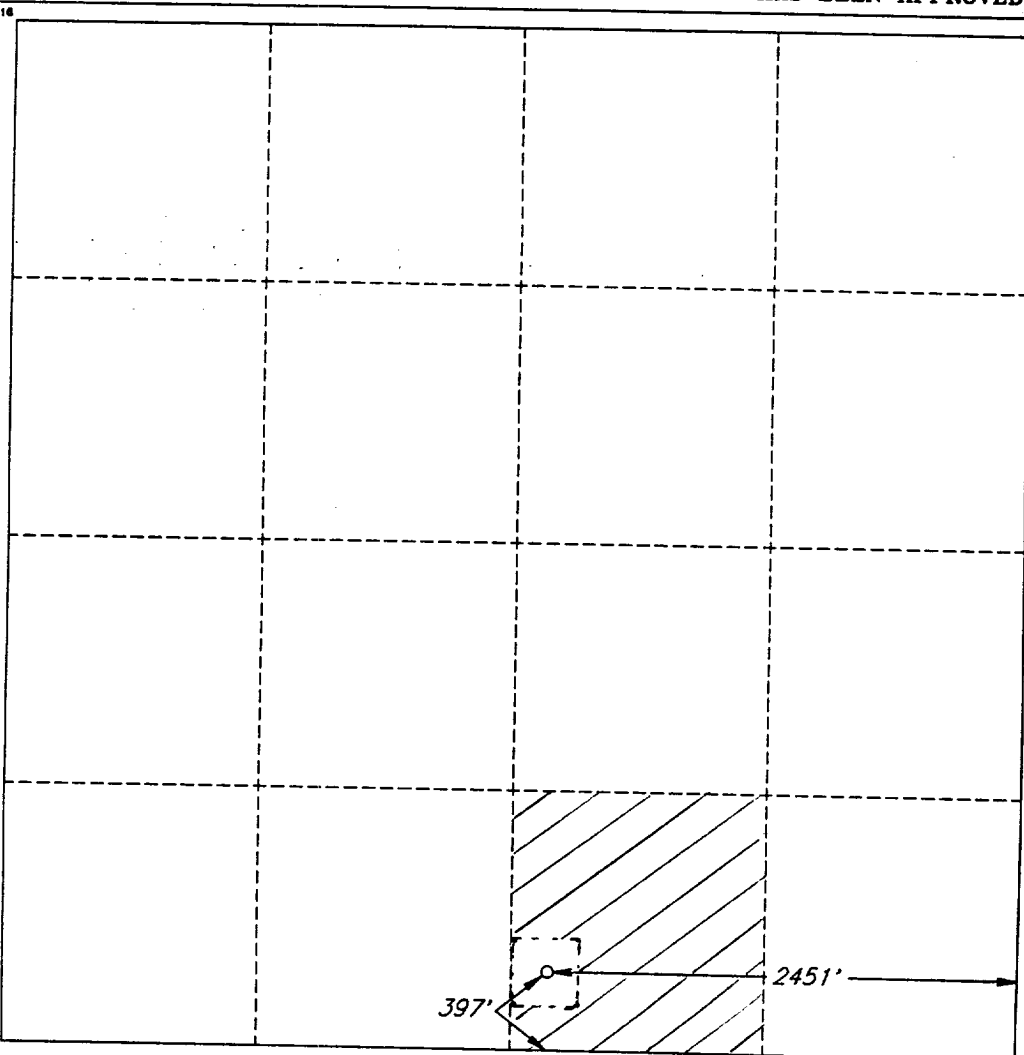
UL or lot no.	Section	Township	Range	Lot Ida	Feet from the	North/South line	Feet from the	East/West line	County
0	9	21 SOUTH	28 EAST, N.M.P.M.		397'	SOUTH	2451'	EAST	EDDY

"BOTTOM HOLE LOCATION IF DIFFERENT FROM SURFACE"

UL or lot no.	Section	Township	Range	Lot Ida	Feet from the	North/South line	Feet from the	East/West line	County

¹² Dedicated Acres 40	¹³ Joint or Infill	¹⁴ Consolidation Code	¹⁵ Order No.
-------------------------------------	-------------------------------	----------------------------------	-------------------------

NO ALLOWABLE WELL BE ASSIGNED TO THIS COMPLETION UNTIL ALL INTERESTS HAVE BEEN CONSOLIDATED OR A NON-STANDARD UNIT HAS BEEN APPROVED BY THE DIVISION



OPERATOR CERTIFICATION

I hereby certify that the information contained herein is true and complete to the best of my knowledge and belief.

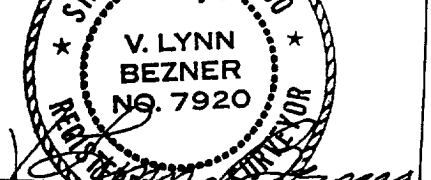
Signature <i>Gerald T. Pepper</i>
Printed Name Gerald T. Pepper
Title District Engineer
Date September 25, 1995

SURVEYOR CERTIFICATION

I hereby certify that the well location shown on this plat was plotted from field notes of actual surveys made by me or under my supervision, and that the same is true and correct to the best of my belief.

Date of Survey: AUGUST 20, 1995
REVISED: 09-14-95 V.B.

Signature and Seal of Professional Surveyor



Certified by
V. L. BEZNER R.P.S. #7920

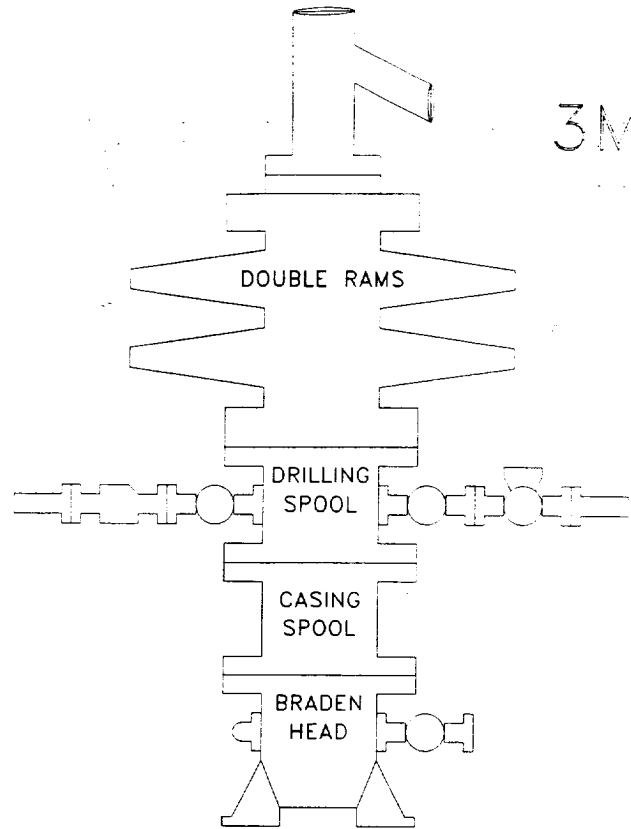
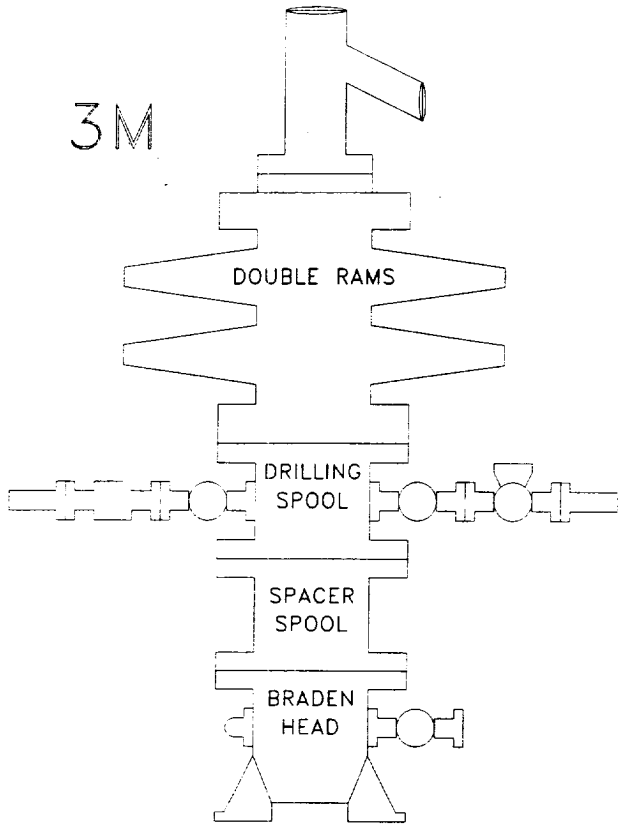
JOB #41334 / 50 NE / V.H.B.

12-1/4" HOLE

7-7/8" HOLE

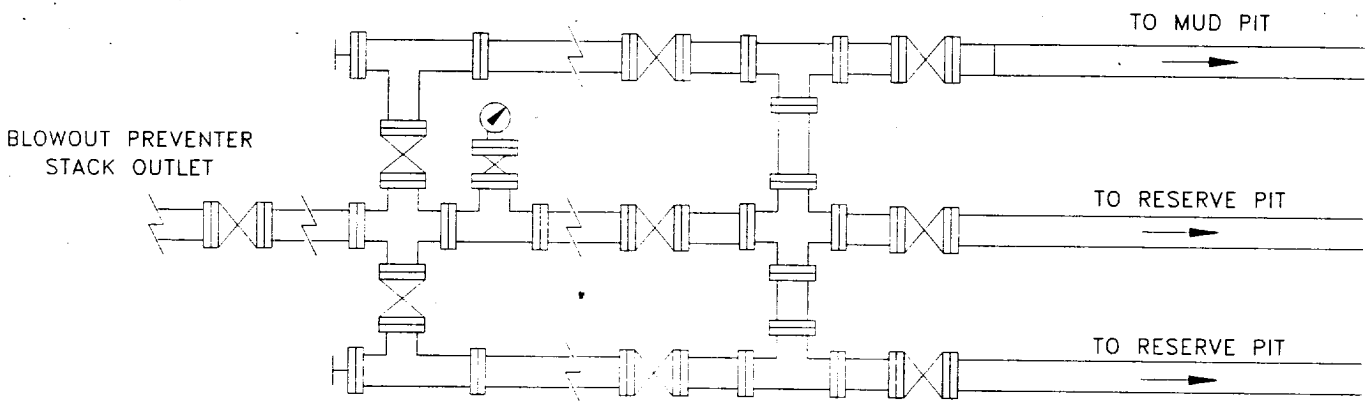
3M

3M



CHOKE MANIFOLD REQUIREMENT (3000 psi WP)

ADJUSTABLE CHOKE



ADJUSTABLE CHOKE
(OR POSITIVE)

MINIMUM 3 INCH NOMINAL CHOKE AND KILL LINES

BOP-3	

devon
ENERGY CORPORATION

CATCLAW DELAWARE PROSPECT
EDDY COUNTY, NEW MEXICO

EXHIBIT #1
SCHEMATIC
BLOWOUT PREVENTOR

T PEPPER

Exhibit #1A
NOTES REGARDING BLOWOUT PREVENTERS
Devon Energy Corporation (Nevada)
CACTUS "90" FEDERAL #1
397' FSL & 2451' FEL
Section 9-T21S-R26E, Unit O
Eddy County, New Mexico

1. Drilling nipple will be constructed so it can be removed mechanically without the aid of a welder. The minimum internal diameter will equal BOP bore.
2. Wear ring will be properly installed in head.
3. Blowout preventer and all associated fittings will be in operable condition to withstand a minimum 3000 psi working pressure.
4. All fittings will be flanged.
5. A full bore safety valve tested to a minimum 3000 psi WP with proper thread connections will be available on the rotary rig floor at all times.
6. All choke lines will be anchored to prevent movement.
7. All BOP equipment will be equal to or larger in bore than the internal diameter of the last casing string.
8. Will maintain a kelly cock attached to the kelly.
9. Hand wheels and wrenches will be properly installed and tested for safe operation.
10. Hydraulic floor control for blowout preventer will be located as near in proximity to driller's controls as possible.
11. All BOP equipment will meet API standards and include a minimum 40 gallon accumulator having two independent means of power to initiate closing operation.