

District I
PO Box 1980, Hobbs, NM 88241-1980
District II
811 S. 1st Street Artesia, NM 88210-1404
District III
1000 Rio Brazos Rd, Aztec, NM 87410
District IV
PO Box 2088, Santa Fe, NM 87504-2088

State of New Mexico
Energy, Minerals & Natural Resources Department
OIL CONSERVATION DIVISION
PO Box 2088
Santa Fe, NM 87504-2088

Form C-101
Revised February 10, 1994
Instructions on back
Submit to Appropriate District Office
State Lease - 6 Copies
Fee Lease - 5 Copies

☐ AMENDED REPORT

APPLICATION FOR PERMIT TO DRILL, RE-ENTER, DEEPEN, PLUG BACK, OR ADD A ZONE

Operator Name and Address Mack Energy Corporation P.O. Box 960 Artesia, NM 88211-0960		OGRID Number 013837
Property Code 018731	Property Name Willow State	API Number 30-015-29568
Well No. 4		

Surface Location

UL or lot no.	Section	Township	Range	Lot Idn	Feet from the	North/South line	Feet from the	East/West line	County
P	16	17S	31E		1190	South	330	East	Eddy

Proposed Bottom Hole Location If Different From Surface

UL or lot No.	Section	Township	Range	Lot Idn	Feet from the	North/South line	Feet from the	East/West line	County
Proposed Pool 1 Fren Paddock (26770)					Proposed Pool 2				

Work Type Code N Multiple No	Well Type Code O Proposed Depth 5400	Cable/Rotary R Paddock	Lease Type Code S Larue Drilling	Ground Level Elevation 3831 Spud Date
---------------------------------------	---	------------------------------	--	---

Proposed Casing and Cement Program

Hole Size	Casing Size	Casing weight/foot	Setting Depth	Sacks of Cement	Estimated TOC
17 1/2	13 3/8	48	350'	Circ	
12 1/4	8 5/8	32	1800	Circ	
7 7/8	5 1/2	17	5400	Sufficient to Circ	

Describe the proposed program. If this application is to DEEPEN or PLUG BACK give the data on the present productive zone and proposed new productive zone. Describe the blowout prevention program, if any. Use additional sheets if necessary.

Mack Energy Corporation proposes to drill a Paddock test to 5400'. Drill to 300', run 13 3/8 casing and cement. Drill to 1800', run 8 5/8" casing and cement. Drill to 5400' and test Paddock formation, if commercial will run 5 1/2" casing and cement. Put on Production.

*Note: On Production string, fluid caliber will be run, will figure cement with 25% excess, attempt to circ cement to surface.

Posted ID-1
H & API
5-8-97

I hereby certify that the information given above is true and complete to the best of my knowledge and belief Signature: <i>Crissa D. Carter</i>		OIL CONSERVATION DIVISION	
Printed name: Crissa D. Carter		Approval by: <i>Jim W. Burns</i> BGA	
Title: Production Clerk		Title: <i>District Supervisor</i>	
Date: 2-24-97		Approval Date: 5-1-97	Expiration Date: 5-1-98
Phone: (505) 748-1288		Conditions of Approval: Attached <input type="checkbox"/>	

DISTRICT I
P.O. Box 1980, Hobbs, NM 88241-1980

State of New Mexico
Energy, Minerals and Natural Resources Department

Form C-102
Revised February 10, 1994
Submit to Appropriate District Office
State Lease - 4 Copies
Fee Lease - 3 Copies

DISTRICT II
P.O. Drawer DD, Artesia, NM 88211-0719

DISTRICT III
1000 Rio Brazos Rd., Aztec, NM 87410

OIL CONSERVATION DIVISION
P.O. Box 2088
Santa Fe, New Mexico 87504-2088

DISTRICT IV
P.O. Box 2088, Santa Fe, NM 87504-2088

☐ AMENDED REPORT

WELL LOCATION AND ACREAGE DEDICATION PLAT

API Number	Pool Code 26770	Pool Name Fren Paddock
Property Code 018731	Property Name WILLOW STATE	Well Number 4
OGRID No. 013837	Operator Name MACK ENERGY CORPORATION	Elevation 3854

Surface Location

UL or lot No. P	Section 16	Township 17 S	Range 31 E	Lot Idn	Feet from the 1190	North/South line SOUTH	Feet from the 330	East/West line EAST	County EDDY
--------------------	---------------	------------------	---------------	---------	-----------------------	---------------------------	----------------------	------------------------	----------------

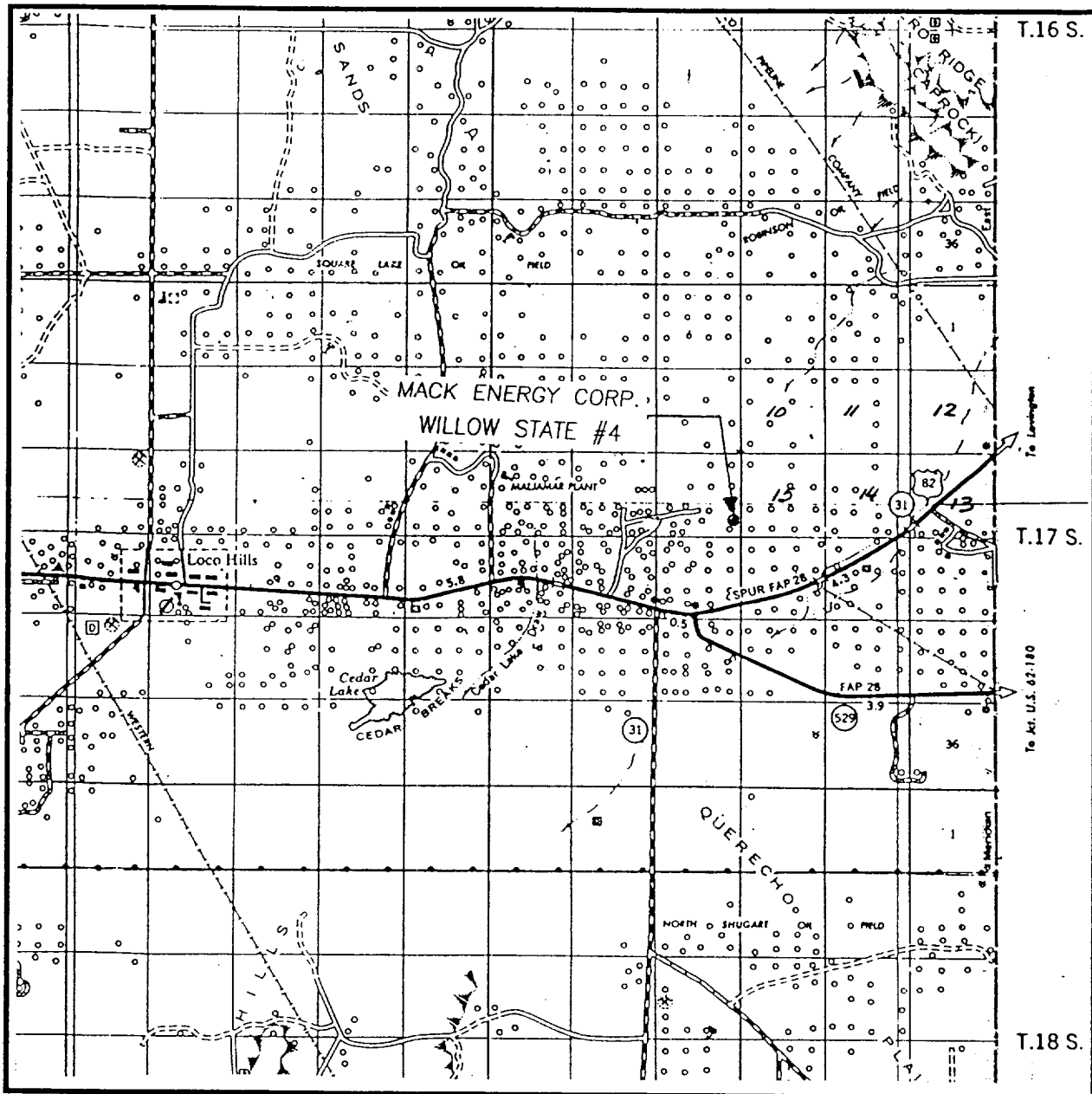
Bottom Hole Location If Different From Surface

UL or lot No.	Section	Township	Range	Lot Idn	Feet from the	North/South line	Feet from the	East/West line	County
Dedicated Acres 40	Joint or Infill	Consolidation Code	Order No.						

NO ALLOWABLE WILL BE ASSIGNED TO THIS COMPLETION UNTIL ALL INTERESTS HAVE BEEN CONSOLIDATED
OR A NON-STANDARD UNIT HAS BEEN APPROVED BY THE DIVISION

				OPERATOR CERTIFICATION	
				<i>I hereby certify the the information contained herein is true and complete to the best of my knowledge and belief.</i>	
				Signature Crissa D. Carter	
				Printed Name Production Clerk	
				Title 2-24-97	
				Date	
				SURVEYOR CERTIFICATION	
				<i>I hereby certify that the well location shown on this plat was plotted from field notes of actual surveys made by me or under my supervision and that the same is true and correct to the best of my belief.</i>	
				JANUARY 24, 1997	
				Date Surveyed JLP	
				Signature & Seal of Professional Surveyor Ronald J. Eidson 1-30-97	
				W.O. Num. 97-11-0139	
				Certificate No. JOHN W. WEST, 676	
				RONALD J. EIDSON, 3239	
				GARY G. EIDSON, 12641	

VICINITY MAP



SCALE: 1" = 2 MILES

SEC. 16 TWP. 17-S RGE. 31-E

SURVEY N.M.P.M.

COUNTY EDDY

DESCRIPTION 1190' FSL & 330' FEL

ELEVATION 3854'

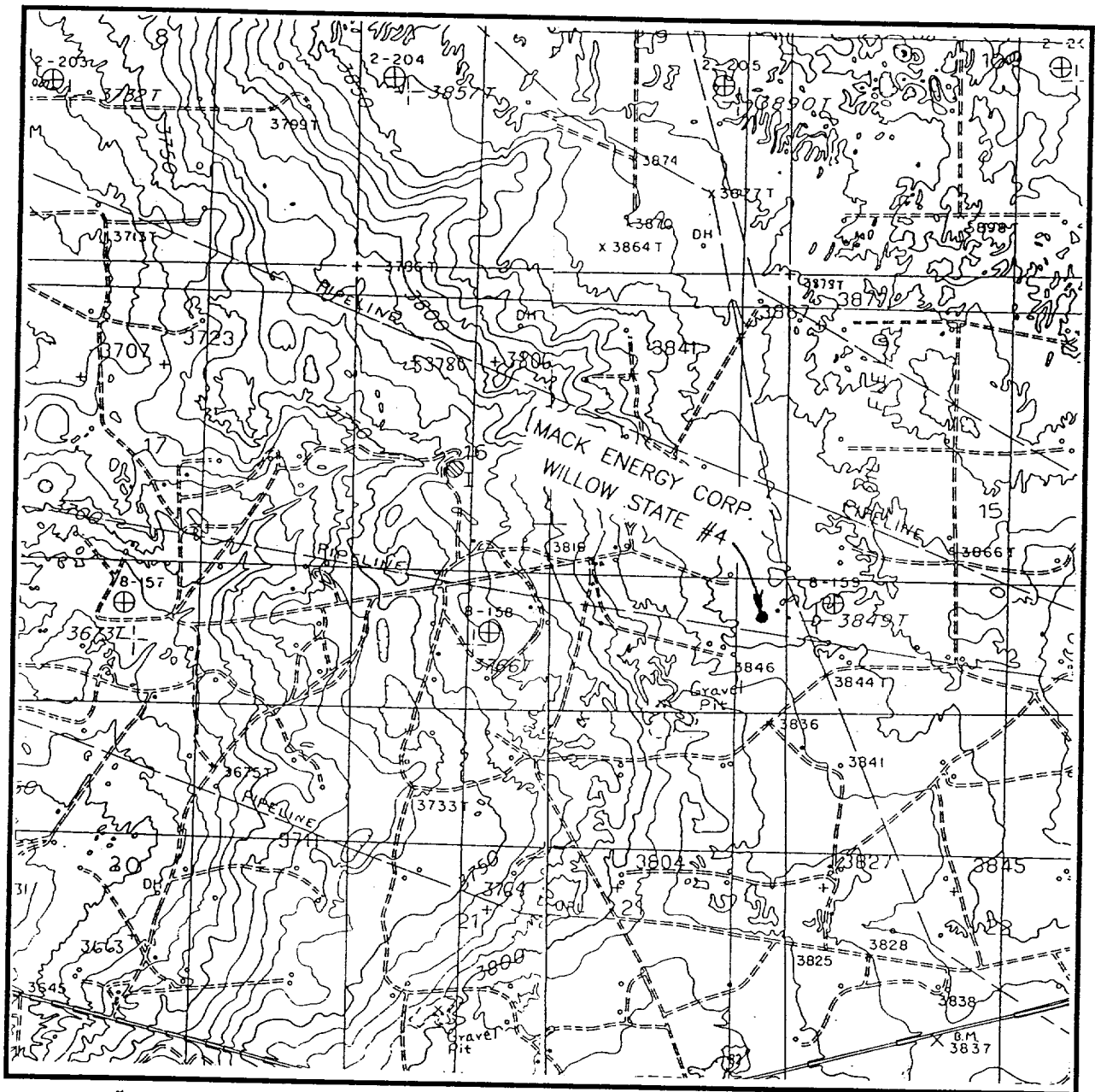
OPERATOR MAC K ENERGY CORP.

LEASE WILLOW STATE

JOHN WEST ENGINEERING
HOBBS, NEW MEXICO

(505) 393-3117

LOCATION VERIFICATION MAP



SCALE: 1" = 2000'

CONTOUR INTERVAL - 10'

SEC. 16 TWP. 17-S RGE. 31-E

SURVEY N.M.P.M.

COUNTY EDDY

DESCRIPTION 1190' FSL & 330' FEL

ELEVATION 3854'

OPERATOR MAC K ENERGY CORP.

LEASE WILLOW STATE

U.S.G.S. TOPOGRAPHIC MAP

LOCO HILLS, & MALJAMAR, N.M.

JOHN WEST ENGINEERING
HOBBS, NEW MEXICO

(505) 393-3117