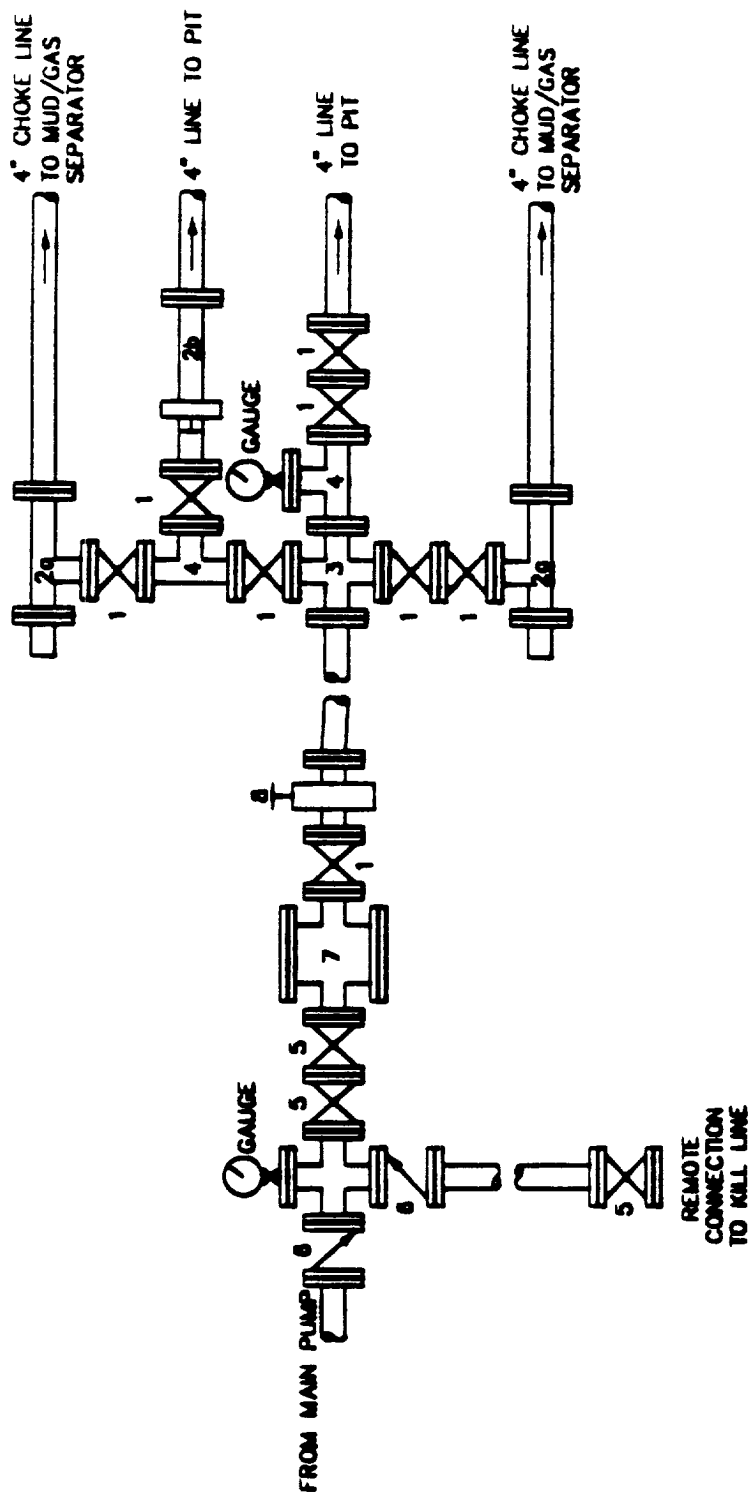


CHOKE MANIFOLD SCHEMATIC



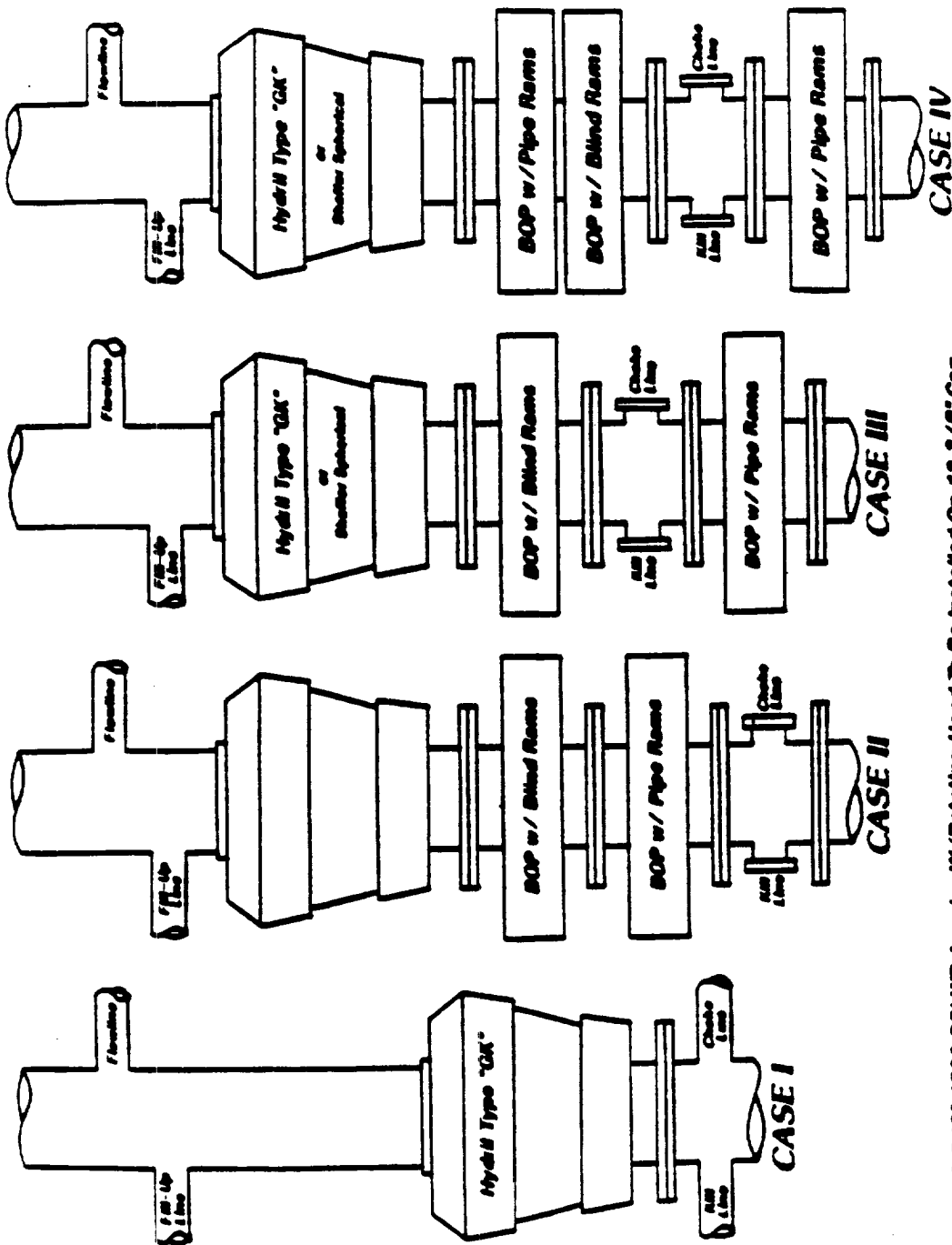
LEGEND

1. 4" FLANGED ALL STEEL VALVE MUST BE EITHER CAMERON "F", HALLIBURTON LOW TORQUE, OR SHAFFER FLO-SEAL.
- 2a. 2 9/16" REMOTE OPERATED FLANGED CHOKE, FULL OPENING & EQUIPPED W/HARD TRIM.
- 2b. 2 9/16" MANUAL OPERATED FLANGED CHOKE, FULL OPENING & EQUIPPED W/HARD TRIM.
3. 4" x 4" FLANGED STEEL CROSS.
4. 4" FLANGED STEEL TEE.
5. 2" FLANGED ALL STEEL VALVE (TYPE AS IN #1).
6. 2" FLANGED CHECK VALVE.
7. DRILLING SPOOL W/2" x 4" FLANGED STEEL OUTLET.
8. 4" PRESSURE OPERATED GATE VALVE.

NOTES

CHOKE MANIFOLD MAY BE LOCATED IN ANY CONVENIENT POSITION. USE ALL STEEL FITTINGS THROUGHOUT. MAKE 90° TURNS WITH BULL PLUGGED TEES ONLY. NO FIELD WELDING WILL BE PERMITTED ON ANY OF THE COMPONENTS OF THE CHOKE MANIFOLD AND RELATED EQUIPMENT UPSTREAM OF THE CHOKES. THE CHOKE SPOOL AND ALL LINES AND FITTINGS MUST BE AT LEAST EQUIVALENT TO THE TEST PRESSURE OF THE PREVENTERS REQUIRED. INDEPENDENT CLOSING CONTROL UNIT WITH CLEARLY MARKED CONTROLS TO BE LOCATED ON DERRICK FLOOR NEAR DRILLER'S POSITION.

MINIMUM BLOWOUT PREVENTER REQUIREMENTS



CASE I: 13 5/8" 1500 PSI WP Annular W/Rotating Head To Be Installed On 13 3/8" Csg

CASE II: 11" 5M PSI Double Rams W/3M PSI Annular To Be Installed On 9 5/8" Csg.

CASE III: 7 1/16" 10M PSI Double Ram (Pipe On Top) Above Drilling Spool

7 1/16" 10M PSI Single Ram Below Drilling Spool

7 1/16" 5M PSI Annular W/Rotating Head

10M PSI Choke Manifold W/Remote KIM Line Connection

All To Be Installed On 7" Csg.



NEW MEXICO ENERGY, MINERALS
& NATURAL RESOURCES DEPARTMENT

OIL CONSERVATION DIVISION
2040 South Pacheco Street
Santa Fe, New Mexico 87505
(505) 827-7131

October 28, 1998

Burlington Resources Oil & Gas Company
P. O. Box 51810
Midland, Texas 79710-1810
Attention: Maria L. Perez



Administrative Order NSL-4159(BHL)

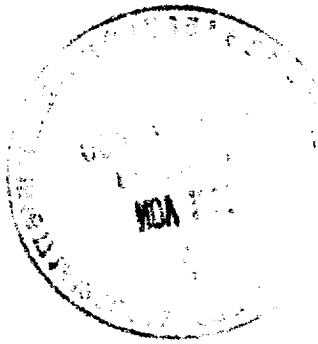
Dear Ms. Perez:

Reference is made to your application dated October 5, 1998 for a non-standard subsurface gas producing area/bottomhole gas well location, pursuant to Division General Rule 104.F and 111.C(2) to be applicable to the Undesignated Ross Draw-Wolfcamp Gas Pool for Burlington Resources Oil and Gas Company's ("Burlington") BR "13" Federal Well No. 1 to be drilled from a surface location 1834 feet from the North line and 665 feet from the West line (Unit E) of Section 13, Township 26 South, Range 30 East, NMPM, Eddy County, New Mexico. The W/2 of Section 13, being a standard 320-acre stand-up gas spacing and proration unit for the Undesignated Ross Draw-Wolfcamp Gas Pool, is to be dedicated to this well.

It is our understanding that Burlington intends to kickoff of the vertical portion of this wellbore in a southeasterly direction and drill a lateral horizontal drainhole through the Wolfcamp formation. Further, to allow for natural drift tendencies in normal vertical rotary drilling operations within this immediate area Burlington is requesting a larger than legal drilling window for this producing interval [see Division General Rules 104.B(1)(a) and 111.A(9)].

The applicable drilling window or "producing area" within the Wolfcamp formation for this wellbore shall include that area within the subject 320-acre gas spacing and proration unit comprising the W/2 of Section 13 that is:

- (a) no closer than the normal set-back requirement of 660 feet to the eastern boundary of the subject 320-acre tract;
- (b) no closer than 500 feet to the West line of Section 13; and,
- (c) no closer than the normal set-back requirement of 1650 feet to the North and South lines of Section 13.

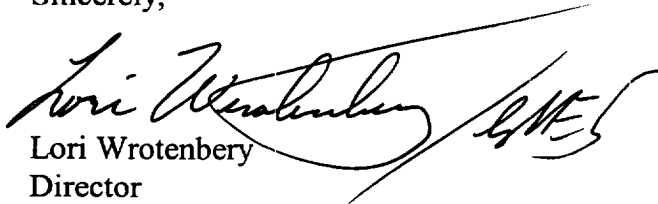


Administrative Order NSL-4159(BHL)
Burlington Resources Oil & Gas Company
October 28, 1998
Page 2

By the authority granted me under the provisions of Division General Rule 104.F(2), the above-described non-standard subsurface gas producing area/bottomhole gas well location for the Wolfcamp formation is hereby approved.

The operator shall comply with all provisions of Division General Rule 111 applicable in this matter.

Sincerely,


Lori Wrotenbery
Director

LW/MES/kv

cc: New Mexico Oil Conservation Division - Artesia
U. S. Bureau of Land Management - Carlsbad