

RECEIVED  
BLM

UNITED STATES 03 FEB 14 PM 1:53  
DEPARTMENT OF THE INTERIOR  
BUREAU OF LAND MANAGEMENT

FORM APPROVED  
Budget Bureau No. 1004-0135  
Expires: March 31, 1993

**SUNDRY NOTICES AND REPORTS ON WELLS**

Do not use this form for proposals to drill or to deepen or reentry to a different reservoir.  
Use "APPLICATION FOR PERMIT---" for such proposals

**SUBMIT IN TRIPLICATE**

1. Type of Well

☐ Oil ☒ Gas ☐ Other

2. Name of Operator

D.J. Simmons Co.

3. Address and Telephone No.

1009 Ridgeway Place, Suite 200, Farmington NM 87401 (505) 326-3753

4. Location of Well (Footage, Sec., T., R., M., or Survey Description)

985' FNL x 900' FEL, Section 8, T24N, R4W

5. Lease Designation and Serial No.

Contract 111

6. If Indian, Allottee or Tribe Name

Jicarilla

7. If Unit or CA, Agreement Designation

8. Well Name and No.

Jicarilla #104

9. API Well No.

30-039-22035

10. Field and Pool, or Exploratory Area

W Lindrith Gallup Dakota

11. County or Parish, State

Rio Arriba County, New Mexico

12. CHECK APPROPRIATE BOX(s) TO INDICATE NATURE OF NOTICE, REPORT, OR OTHER DATA

TYPE OF SUBMISSION

☐ Notice of Intent

☒ Subsequent Report

☐ Final Abandonment Notice

TYPE OF ACTION

☒ Abandonment

☐ Recompletion

☐ Plugging Back

☐ Casing Repair

☐ Altering Casing

☐ Other

☐ Change of Plans

☐ New Construction

☐ Non-Routine Fracturing

☐ Water Shut-Off

☐ Conversion to Injection

☐ Dispose Water

(Note: Report results of multiple completion on Well Completion or Recompletion Report and Log form.)

13. Describe Proposed or Completed Operations (Clearly state all pertinent details, and give pertinent dates, including estimated date of starting any proposed work. If well is directionally drilled, give subsurface locations and measured and true vertical depth for all markers and zones pertinent to this work.)\*

After attempting to repair this well, the well was plugged and abandoned as per the attached reports and well bore diagram. Plug #1 was set inside casing from 5440' to 5230', 50 sk spotted balanced plug. Plug #2 set under retainer at 4349', inside and outside casing through sqz holes, 4530' - 4330', 60 sks. Plug #3 set under retainer, inside and outside casing through sqz holes, 3600' - 3500', 50 sks. Plug #4 set inside casing from 2815' - 2200', 70 sk spotted balanced plug. Plug #5 set inside and outside casing, through sqz holes and braden head, 85 sks, circulated to surface.

14. I hereby certify that the foregoing is true and correct

Signed Robert R. Griffie  
Robert R. Griffie

Title Operations Engineer

Date: 12/30/02

(This space for Federal or State office use)

Division of Multi-Resources

Approved by [Signature]

Title

Date

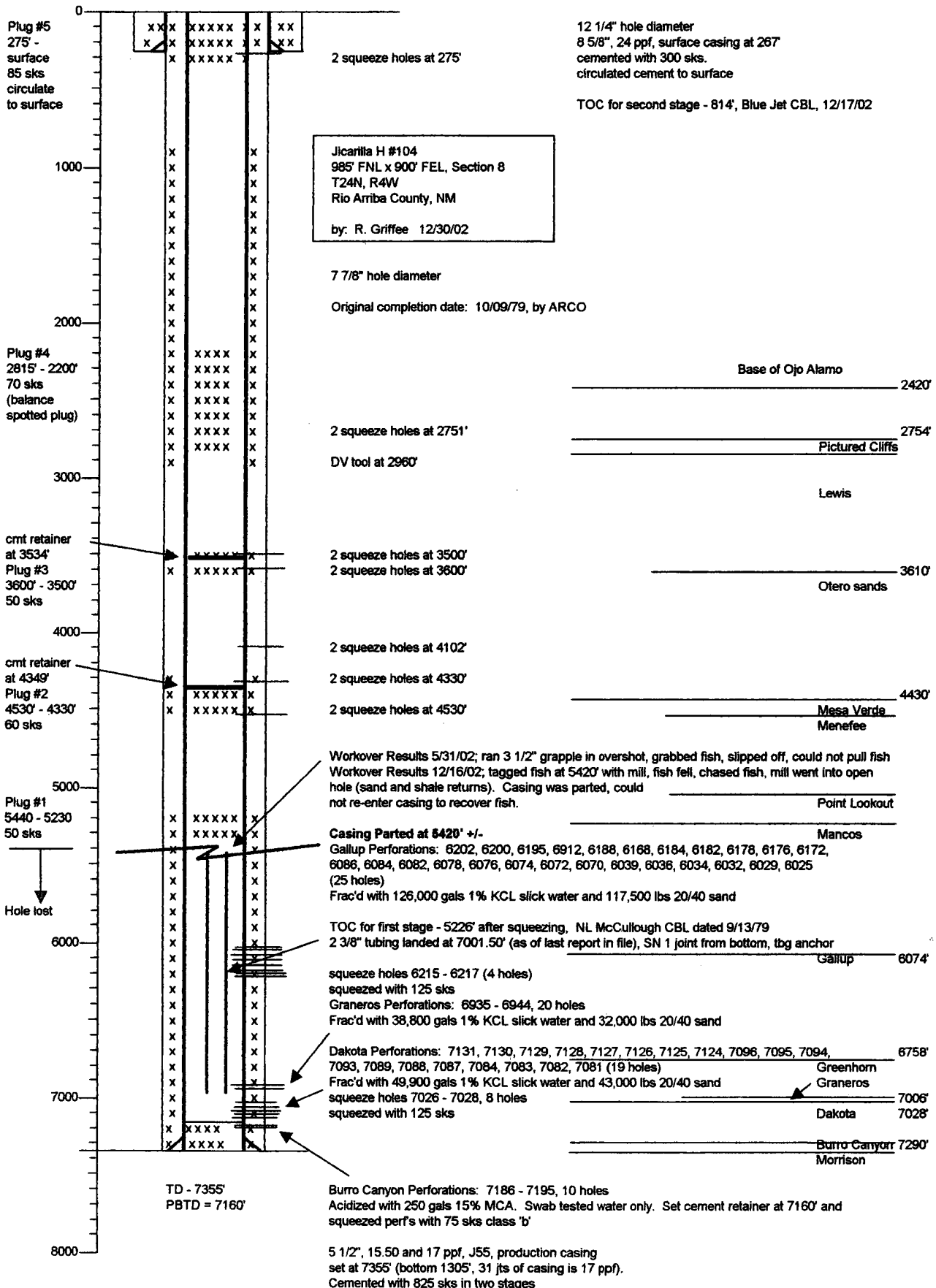
Conditions of approval, if any:

\* Surface Restoration

Title 18 U.S.C. Section 1001, makes it a crime for any person knowingly and willfully to make to any department or agency of the United States any false, fictitious or fraudulent statements or representations as to any matter within its jurisdiction.

\*See Instruction on Reverse Side

Elevations: 6701' GL



---

## D.J. SIMMONS, INC.

### Jicarilla H 104 Workover Reports

2/20/02

MIRU DJS Rig 111, heavy mud. SDFN.

2/21/02

MIRU. ND well head, NU BOPE. Found that no tubing was in well, and donut was not installed. Secure well, SDFN.

2/22/02

PU 4 3/4" bit and 2 3/8" tubing. TIH. Tag fish at 5413'. Note: casing was full of oil with tubing in oil – green Gallup oil. TOH stand back tubing. Secure well, SDFN.

2/25/02

PU impression block (Knight Oil tools), TIH. Tag fish at 5413.13'. Drain hole in impression block plugged and tubing would not drain. Could not TOH due to high winds and wet string. Secure well, SDFN.

2/26/02

RU to swab. Swab oil out of tubing. TOH with impression block, wet. Impression block showed 3 1/8" OD tubing collar, only about half a collar. Collar is probably split. PU overshot with 3 1/8" grapple. Latch fish at 5413'. Pulled 6000 lbs over string weight and grapple broke loose. TOH. Grapple marks also showed probable half of a collar on top. May have pulled collar off pipe. Secure well, SDFN.

2/27/02

TIH. TOH and lay down tubing. ND BOP and NU well head. Cut off sand line. Secure well, SDFN.

2/28/02

Rig down and move to Jicarilla H 113.

5/22/02                      Workover Report JIC #104

Road unit to location. RU. Unit & equip. NU bpo & floor. Service rig, xover for 2/3/8 tbg. SDFN. Travel in.

5/23/02                      Workover Report JIC #104

SM. W/crew. Tally & caliper six DC s [3 1/8"] . MU. mill & xovers TIH. Tag fish @ 5,419 Break circ. Send 16 bbls +or- to prod. tank. Mill 2.5' circ hole clean. Note w/bottoms up drlg mud & shale for less than 2 bbl return .TOH . LD tools. Mill shows rods to be inside tbg. SDFN. Travel in.

5/24/02                      Workover report JIC # 104

SM. W/crew. TIH W/ collars & overshot catch fish, pull off recatch ,jar on fish no movement. Release tool TOH LD tools SDFN. Travel in. [ Note pull 40k to 50k over]

5/28/02                      Workover report JIC # 104

SM. W/crew. MU. New mill & DCs. TIH. Tag @ 5,423, break circ drg mud returns w/slite shale no oil, mill 8'. Circ well clean. TOH. Mill shows 2 separate marks from rods inside of tbg. [ The reason for 2 marks is from pickup & setting back on fish]. MU. Overshot dc's jars & xovers & tbg to 1,850'. Secure well SDFN. Travel in.

5/28/02                      Workover Report JIC # 104

SM w/crew. TIH> w/ mill collars, tbg tag @ 5,423'. Mill 8'. Returns showed drlg mud & shale @ start, but was brief. Circ clean. TOOHO> ld tools. MU. Oshot& collars TIH. 25 std 2 3/8 tbg.SDFN. Travel in.

5/29/02                      Workover Report JIC 3 104

SM. W/ crew. MU. Oshot TIH catch fish pull off, no recatch. TOH. LD. Tools. MU. New grapple, TIH catch fish after breaking circ. Jar on fish. No movement. Release tools TOOHO. LD collars & all tools. SDFN. Travel in. Prepare well for production testing.

5/30/02

Workover Report JIC # 104

SM. W/crew. TIH w/ sn 2 3/8 tbg, land @ 5,334'. RU & swab tbg, 36 runs 120 bbls recovery. SDFN. Travel in.

5/31/02

Workover Report JIC # 104

SM W/crew. SICP tstm. Make 1 swab run no oil show @ this time. RDMO. Release well to production foreman.

12/12/02

Workover Report H-104

Road rig to location. RU unit & equip. ND wellhead NU BOPE. Secure well travel in.

12/13/02

Workover Report for H-104

Travel to location. SM w/ crew. RU floor TOH w/ 163 jts 2 3/8 tbg. PU 5 1/2 packer TIH set pkr @ 5,300'. Test csg to 800 psi. Test ok. Test under pkr to 800 psi. would bleed very slowly down to 600 psi. Release pkr TOH. Replace packing in p. swivel. Travel in. SDFN.

12/16/02

Workover Report for H-104

SM w/ crew. MU 4 3/4 mill bs, 6 3 1/8 DCs, xover for 2 3/8 tbg. TIH Tag high @ 5,327' Work through tight spot. TIH tag fish top @ 5,420', break circ. Try tag fish TIH to 5,541'. Drill to 5,443' returns showed heavy shale, sand & drilling mud. Pull up circ clean. Drilling outside of csg, could not retag fish. TOH ld mill & xovers. SDFN travel in. Received plugging approval over telephone from Charlie Perrin, NMOCD and Brian Davis, BLM.

12/17/02

Workover Report for H-104

SM w/crew. Open well RU wireline run CBL from 5,300' to surface [ See log] RD wireline. Secure well. Travel in.

12/18/02

Workover Report for H-104

SM w/crew. Open well TSTM. TIH w/ 3 1/8 " DCs, TOH lay down same. W.O. Blue Jet. Roads very icy. Dig &. Fence pit as per regs, line cleanup pit. RU Bluejet. Perforate 2 Holes @ 4,530', 2 @ 4,330', 2 @ 4,102', 2 @ 3,600', 2 @ 3,500', 2 @ opps 2,751, and 2 @ 275'. {Note check for gas after perforations nothing notable noticed.} RD. Bluejet, secure well. Cleanout cattle guards w/ roustabout crew. Travel in.

12/19/02

Workover Report for H – 104

SM. W/crew. Warm equip. {-5 deg.] TIH 15 stds to 5,440. RU American Energy, break circ Spot 50 sxs class B neat cmt. Plug from 5,440' to 5,230'. TOH 15 jts, reverse out. LD 18 jts TOH w/ tbg. MU. Retainer TIH to 4,349 and set retainer. RU. Pump 60 sxs class b neat cmt. Sting out pump 10 sxs on top of ret. LD. 10 jts 2 3/8 rev out, LD 15 more jts. TOH MU ret, TIH 107 jts try to set retainer will not set. TOH 10 stds. SDFN, travel in.

12/20/02

Workover Report for H-104

SM w/crew. TIH 10 stds, try to set ret. Won't set. TOH. MU new retainer TIH set ret@ 3,534'. Break circ, cmt w/ 50sxs class b neat, sting out pump 10sxs on top of ret. LD 22 jts , spot plug From 2,815' to 2,200' total 70sxs class b neat. LD all tbg. ND. BOPE NU wellhead. Break circ Pump 85sxs class b neat. Circ. Approx 25% excess to reserve pit. Lock in w/ 100 psi @ wellhead. RD American Energy & clean up. SDFN. Travel in.

12/30/02

Workover Report for H-104

SM. W/crew. Rig down unit & all equipment. Dump rig pit. Move off.