

UNITED STATES
DEPARTMENT OF THE INTERIOR
BUREAU OF LAND MANAGEMENT

RECEIVED

APPLICATION FOR PERMIT TO DRILL, DEEPEN, OR PLUG BACK

2004 FEB 25 AM 11:58

1a. Type of Work
DRILL

5. Lease Number
SF-079492-C

Unit Reporting Number
MV-8910010510 Farmington, NM

DK-891001051B

If Indian, All. or Tribe

1b. Type of Well
GAS

2. Operator
BURLINGTON
RESOURCES Oil & Gas Company

Unit Agreement Name

San Juan 27-5 Unit

3. Address & Phone No. of Operator
PO Box 4289, Farmington, NM 87499

(505) 326-9700

8. Farm or Lease Name
San Juan 27-5 Unit

9. Well Number
#98P

4. Location of Well
2340' FSL, 2570' FWL

10. Field, Pool, Wildcat
Blanco Mesaverde/Basin Dakota

11. Sec., Twn, Rge, Mer. (NMPM)

Sec. 14, T27N, R05W

API # 30-039-

27640

Latitude 36° 34.3453'N, Longitude 107° 19.6401'W

14. Distance in Miles from Nearest Town
41.4 miles to Blanco Post Office

12. County
Rio Arriba

13. State
NM

15. Distance from Proposed Location to Nearest Property or Lease Line
2340'

16. Acres in Lease

17. Acres Assigned to Well
320 W/2 - MV
320 W/2 - DK

18. Distance from Proposed Location to Nearest Well, Drlg, Compl, or Applied for on this Lease
2072'

19. Proposed Depth
7895'

20. Rotary or Cable Tools
Rotary

21. Elevations (DF, FT, GR, Etc.)
6626' GR

22. Approx. Date Work will Start

23. Proposed Casing and Cementing Program
See Operations Plan attached

24. Authorized by: Joni Clark
Regulatory Specialist

Date

2/24/04

PERMIT NO. _____

APPROVAL DATE _____

APR - 8 2004

APPROVED BY /s/ David J. Markiewicz

TITLE _____

DATE _____

Archaeological Report attached

Threatened and Endangered Species Report attached

NOTE: This format is issued in lieu of U.S. BLM Form 3160-3

Title 18 U.S.C. Section 1001, makes it a crime for any person knowingly and willfully to make to any department or agency of the United States any false, fictitious or fraudulent statements or presentations as to any matter within its jurisdiction.

and appeal pursuant to 43 CFR 3165.3
and appeal pursuant to 43 CFR 3165.4

NM000

DRILLING OPERATIONS AUTHORIZED ARE
SUBJECT TO COMPLIANCE WITH ATTACHED
"GENERAL REQUIREMENTS".

DISTRICT I
1625 N. French Dr., Hobbs, N.M. 88240

DISTRICT II
811 South First, Artesia, N.M. 88210

DISTRICT III
1000 Rio Brazos Rd., Aztec, N.M. 87410

DISTRICT IV
2040 South Pacheco, Santa Fe, NM 87505

State of New Mexico
Energy, Minerals & Natural Resources Department

Form C-102
Revised August 15, 2000

Submit to Appropriate District Office
State Lease - 4 Copies
Fee Lease - 3 Copies

OIL CONSERVATION DIVISION

2040 South Pacheco
Santa Fe, NM 87505

☐ AMENDED REPORT

WELL LOCATION AND ACREAGE DEDICATION PLAT

*API Number 30-039-27640		*Pool Code 71599/72319	*Pool Name Basin Dakota/Blanco Mesaverde
*Property Code 7454	*Property Name SAN JUAN 27-5 UNIT		*Well Number 98 P
*OGRID No. 14538	*Operator Name BURLINGTON RESOURCES OIL AND GAS COMPANY LP		*Elevation 6626'

¹⁰ Surface Location

UL or lot no. K	Section 14	Township 27-N	Range 5-W	Lot Idn	Feet from the 2340'	North/South line SOUTH	Feet from the 2570'	East/West line WEST	County RIO ARRIBA
--------------------	---------------	------------------	--------------	---------	------------------------	---------------------------	------------------------	------------------------	----------------------

¹¹ Bottom Hole Location If Different From Surface


UL or lot no.	Section	Township	Range	Lot Idn	Feet from the	North/South line	Feet from the	East/West line	County
*Dedicated Acres DK W/320 MV W/320			*Joint or Infill		*Consolidation Code		*Order No.		

NO ALLOWABLE WILL BE ASSIGNED TO THIS COMPLETION UNTIL ALL INTERESTS HAVE BEEN CONSOLIDATED
OR A NON-STANDARD UNIT HAS BEEN APPROVED BY THE DIVISION

16 USA SF-079492-C		14	
2570'		2340'	
N 00-05-34 E 2669.26'		LAT: 36°34.3453' N LONG: 107°19.6401' W NAD 1927	
N 89-36-20 E 2663.18'		070 Farmington, NM 2004 FEB 25 AM 11:58 RECEIVED	

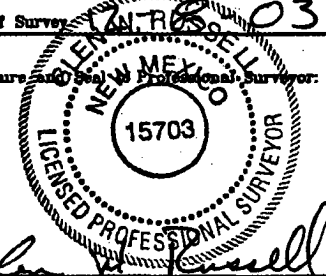
17 OPERATOR CERTIFICATION

I hereby certify that the information contained herein
is true and complete to the best of my knowledge and
belief


Signature
Joni Clark
Printed Name
Regulatory Specialist
Title
5/24/04
Date

18 SURVEYOR CERTIFICATION

I hereby certify that the well location shown on this plat
was plotted from field notes of actual surveys made by
me or under my supervision, and that the same is true
and correct to the best of my belief.

Date of Survey
2/24/03
Signature and Seal of Professional Surveyor

Certificate Number
15703

OPERATIONS PLAN

Well Name: San Juan 27-5 Unit #98P
Location: 2340' FSL, 2570' FWL, Sec 14, T-27-N, R-5-W
Rio Arriba County, NM
Latitude 36° 34.3453'N, Longitude 107° 19.6401'W
Formation: Blanco Mesaverde/Basin Dakota

Total Depth: 7895'

Logging Program: See San Juan 27-5 Unit Master Operations Plan

Mud Program: See San Juan 27-5 Unit Master Operations Plan

Casing Program (as listed, the equivalent, or better):

<u>Hole Size</u>	<u>Depth Interval</u>	<u>Csg. Size</u>	<u>Wt.</u>	<u>Grade</u>	<u>Cement</u>
12 1/4"	0' - 120'	9 5/8"	32.3#	H-40	113 cu.ft.
8 3/4"	0' - 3645'	7"	20.0#	J-55	816 cu.ft.
6 1/4"	0' - 7800'	4 1/2"	10.5#	J-55	579 cu.ft.
6 1/4"	7800' - 7895'	4 1/2"	11.6#	N-80	

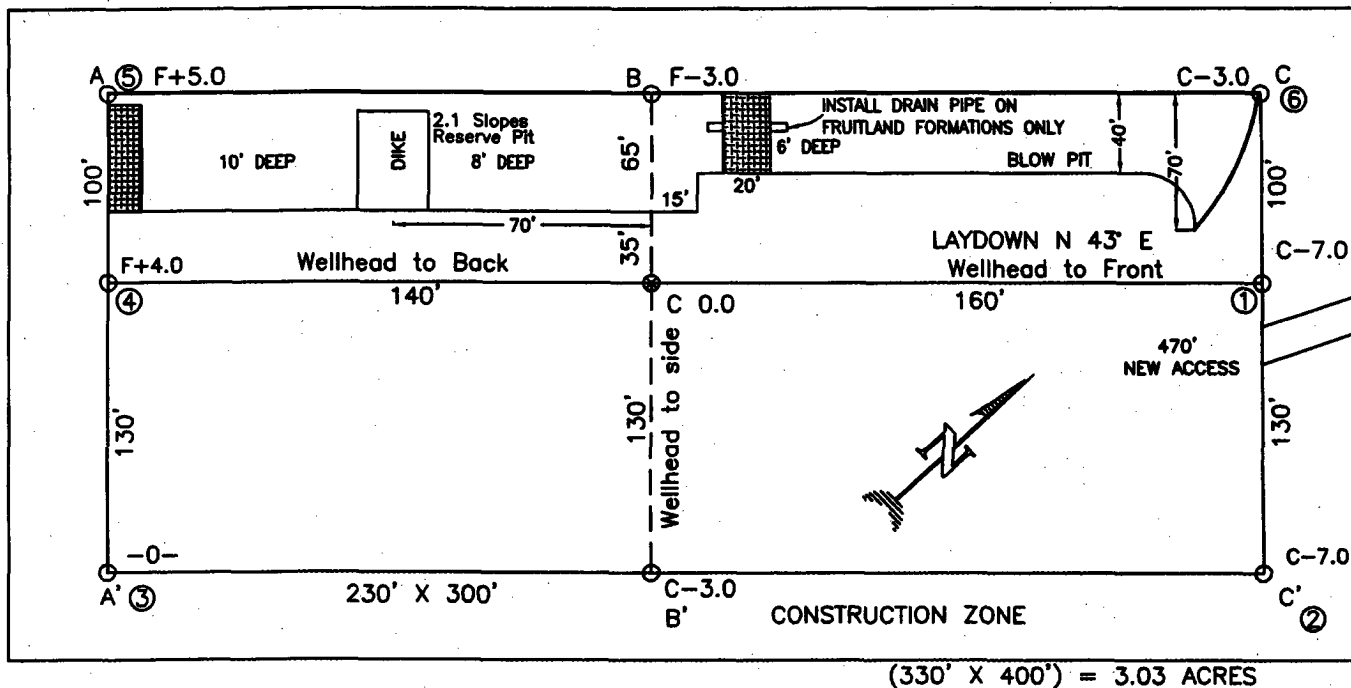
Tubing Program: See San Juan 27-5 Unit Master Operations Plan

- The Mesaverde and Dakota formations will be completed and commingled.
- The west half of Section 14 is dedicated to the Mesaverde and to the Dakota formations in this well.
- Gas is dedicated.

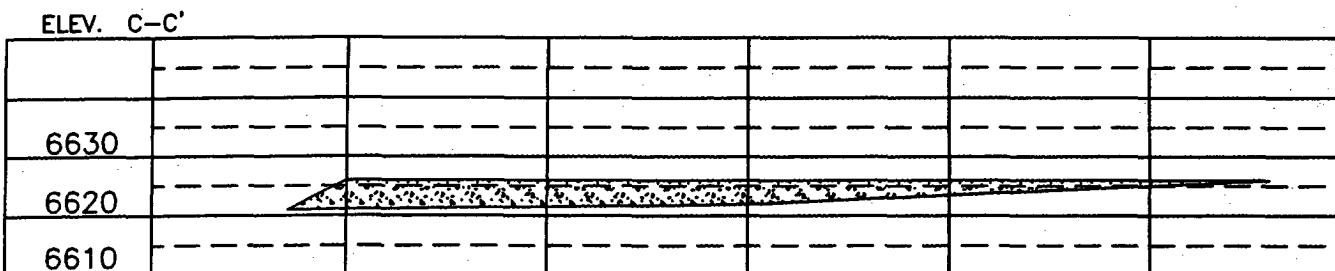
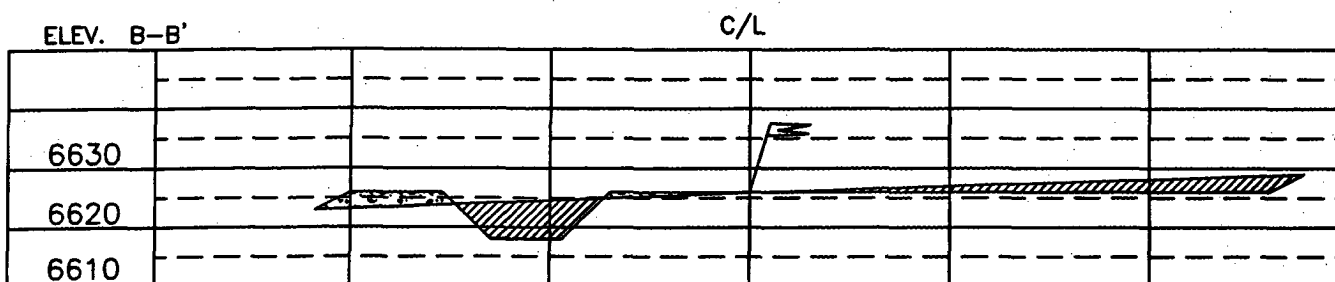
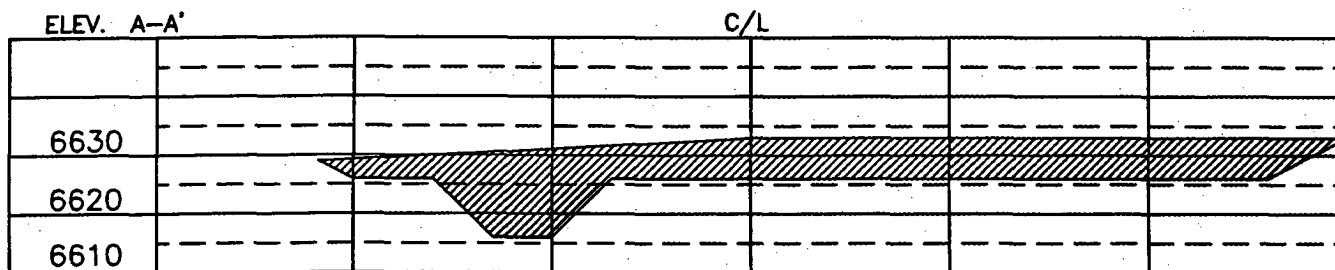
Sean Conigan
Drilling Engineer

February 24, 2004
Date

BURLINGTON RESOURCES OIL & GAS COMPANY LP
SAN JUAN 27-5 UNIT #98 O, 2340' FSL, 2570' FWL
SECTION 14, T-27-N, R-5-W, NMPM, RIO ARriba COUNTY, NM
GROUND ELEVATION: 6626', DATE: NOVEMBER 18, 2003



RESERVE PIT DIKE: TO BE 8' ABOVE DEEP SIDE (OVERFLOW - 3' WIDE AND 1' ABOVE SHALLOW SIDE).
 BLOW PIT: OVERFLOW PIPE HALFWAY BETWEEN TOP AND BOTTOM AND TO EXTEND OVER PLASTIC LINER AND INTO BLOW PIT.



NOTE: VECTOR SURVEYS IS NOT LIABLE FOR UNDERGROUND UTILITIES OR PIPELINES.
 CONTRACTOR SHOULD CALL ONE-CALL FOR LOCATION OF ANY MARKED OR UNMARKED BURIED PIPELINES OR CABLES
 ON WELL PAD AND OR ACCESS ROAD AT LEAST TWO (2) WORKING DAYS PRIOR TO CONSTRUCTION.