

UNITED STATES
DEPARTMENT OF THE INTERIOR
BUREAU OF LAND MANAGEMENT

APPLICATION FOR PERMIT TO DRILL, DEEPEN, OR PLUG BACK

RECEIVED

1a. Type of Work DRILL	5. Lease Number SF-078424	2004 MAR -4 PM 2:22
1b. Type of Well GAS	Unit Reporting Number 070 Farmington, NM	If Indian, All. or Tribe
2. Operator BURLINGTON RESOURCES Oil & Gas Company	7. Unit Agreement Name San Juan 29-7 Unit	
3. Address & Phone No. of Operator PO Box 4289, Farmington, NM 87499 (505) 326-9700	8. Farm or Lease Name San Juan 29-7 Unit	9. Well Number #192
4. Location of Well 820' FNL, 2035' FWL Latitude 36° 42.9825'N, Longitude 107° 34.6654'W	10. Field, Pool, Wildcat Blanco Pictured Cliffs	11. Sec., Twn, Rge, Mer. (NMPM) C Sec. 21, T29N, R07W API # 30-045 39 27659
14. Distance in Miles from Nearest Town 18.1 miles to Blanco, NM Post Office	12. County Rio Arriba	13. State NM
15. Distance from Proposed Location to Nearest Property or Lease Line 820'	17. Acres Assigned to Well PC 320 W/2 NW/4 160	
16. Acres in Lease		
18. Distance from Proposed Location to Nearest Well, Drlg, Compl, or Applied for on this Lease 21'	20. Rotary or Cable Tools Rotary	
19. Proposed Depth 3340'		
21. Elevations (DF, FT, GR, Etc.) 6351' GR	22. Approx. Date Work will Start	
23. Proposed Casing and Cementing Program See Operations Plan attached		
24. Authorized by: <u>Joni Clark</u> Regulatory Specialist	<u>2-9-04</u> Date	

PERMIT NO. _____
APPROVED BY /s/ David J. Markiewicz

APPROVAL DATE _____
TITLE _____
DATE APR - 5 2004

Archaeological Report attached

Threatened and Endangered Species Report attached

NOTE: This format is issued in lieu of U.S. BLM Form 3160-3

Title 18 U.S.C. Section 1001, makes it a crime for any person knowingly and willfully to make to any department or agency of the United States any false, fictitious or fraudulent statements or presentations as to any matter within its jurisdiction.

NO HPA NOTIFICATION REQUIRED UNDER ORDER R-8768F.

This application is subject to technical and procedural review pursuant to 43 CFR 3165.3 and appeal pursuant to 43 CFR 3165.4

NMOC

DRILLING OPERATIONS AUTHORIZED ARE
SUBJECT TO COMPLIANCE WITH ATTACHED
"GENERAL REQUIREMENTS".

DISTRICT I
1625 N. French Dr., Hobbs, N.M. 88240

State of New Mexico
Energy, Minerals & Natural Resources Department

Form C-102
Revised August 15, 2000

DISTRICT II
811 South First, Artesia, N.M. 88210

DISTRICT III
1000 Rio Brazos Rd., Artesia, N.M. 87410

DISTRICT IV
2040 South Pacheco, Santa Fe, NM 87505

OIL CONSERVATION DIVISION
2040 South Pacheco
Santa Fe, NM 87505

Submit to Appropriate District Office
State Lease - 4 Copies
Fee Lease - 3 Copies

☐ AMENDED REPORT

WELL LOCATION AND ACREAGE DEDICATION PLAT

'API Number 30-039- <u>27659</u>	'Pool Code 72359	'Pool Name Blanco Pictured Cliffs
'Property Code 7465	'Property Name SAN JUAN 29-7 UNIT	'Well Number 192
'OGRID No. 14538	'Operator Name BURLINGTON RESOURCES OIL AND GAS COMPANY LP	'Elevation 6351'

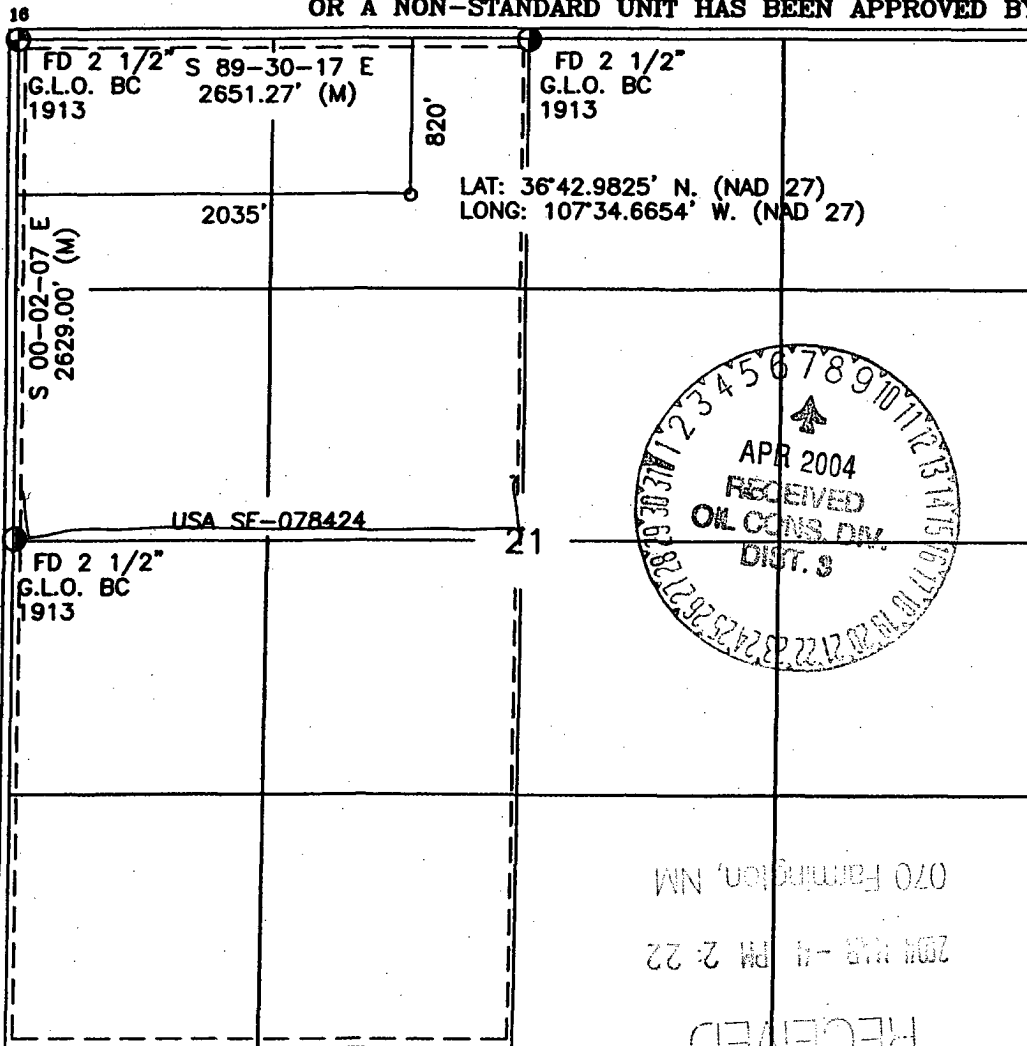
¹⁰ Surface Location

UL or lot no.	Section	Township	Range	Lot Idn	Feet from the	North/South line	Feet from the	East/West line	County
C	21	29-N	7-W		820'	NORTH	2035'	WEST	RIO ARriba

¹¹ Bottom Hole Location If Different From Surface

UL or lot no.	Section	Township	Range	Lot Idn	Feet from the	North/South line	Feet from the	East/West line	County
'Dedicated Acres PC <u>W/2 320</u> <u>NW/4</u>			'Joint or Infill		'Consolidation Code		'Order No. 160 acres for density purposes PC 320 acres for revenue purposes PC		

NO ALLOWABLE WILL BE ASSIGNED TO THIS COMPLETION UNTIL ALL INTERESTS HAVE BEEN CONSOLIDATED
OR A NON-STANDARD UNIT HAS BEEN APPROVED BY THE DIVISION



17 OPERATOR CERTIFICATION

I hereby certify that the information contained herein is true and complete to the best of my knowledge and belief

Signature Joni Clark
Printed Name Joni Clark
Regulatory Specialist
Title
Date 2-9-04

18 SURVEYOR CERTIFICATION

I hereby certify that the well location shown on this plat was plotted from field notes of actual surveys made by me or under my supervision, and that the same is true and correct to the best of my belief.

Date of Survey 10-30-03
Signature and Seal of Professional Surveyor:
DAVID A. JOHNSON
REGISTERED PROFESSIONAL SURVEYOR
14827
Certificate Number

OPERATIONS PLAN

Well Name: San Juan 29-7 Unit #192
Location: 820' FNL, 2035' FWL, Section 21, T-29-N, R-7-W
Rio Arriba County, New Mexico
Latitude 36° 42.98'N, Longitude 107° 34.67'W
Formation: Blanco Pictured Cliffs
Elevation: 6351' GL

Formation:	Top	Bottom	Contents
Surface	San Jose	2243'	
Ojo Alamo	2243'	2323'	aquifer
Kirtland	2323'	2828'	gas
Fruitland Coal	2828'	3118'	gas
Pictured Cliffs	3118'	3303'	gas
Lewis	3303		
Total Depth	3340'		

Logging Program:

Open hole - Platform Express - TD to surface
cased hole - CBL-CCL-GR TD to surface

Coring Program: None

Mud Program:

Interval	Type	Weight	Vis.	Fluid Loss
0- 120'	Spud / <i>air-mist</i>	8.4-9.0	40-50	no control
120-3340'	FW/LSND	8.4-9.0	32-45	no control

Casing Program (as listed, equivalent, or better):

Hole Size	Depth Interval	Csg. Size	Wt.	Grade
8 3/4"	0 - 120'	7"	20.0#	J-55
6 1/4"	0 - 3340'	4 1/2"	10.5#	J-55

Tubing Program:

0' -3340'	2 3/8"	4.7#	J-55
-----------	--------	------	------

Float Equipment: 7" surface casing - saw tooth guide shoe.
Centralizers will be run in accordance with Onshore Order #2.

4 1/2" production casing - float shoe on bottom. Standard centralizers run every third joint above shoe to the base of the Ojo Alamo @ 2323'. Two turbolizing type centralizers - one below and one into the base of the Ojo Alamo @ 2323'. Standard centralizers thereafter every fourth joint up to the base of the surface pipe.

Wellhead Equipment: 7" x 4 1/2" x 2 3/8" 2000 psi screw on independent wellhead.

Cementing:

7" surface casing pre-set drilled- cement with 34 sxs Type I, II cement with 20% flyash mixed at 14.5 ppg, 1.61 cu ft per sack yield. (Bring cement to surface). Wait on cement for 24 hours for pre-set holes before pressure testing or drilling out from under surface.

7" surface casing conventionally drilled - cement with 42 sxs Type III cement with 0.25 pps Celloflake, 3% calcium chloride. (54 cu ft-200% excess, bring cement to surface). Wait on cement appropriate time until cement achieves 250 psi compressive strength at 60 degrees F. prior to nipple up of BOPE. Wait on cement for 8 hrs for conventionally set holes before pressure testing or drilling out from under surface.

Saw tooth guide shoe on bottom. Bowspring centralizers will be run in accordance with Onshore Order #2.

4 1/2" production casing - Lead w/181 sx Premium Lite cement w/3% calcium chloride, 0.25 pps celloflake, 5 pps LCM-1, 0.4% fluid loss, 0.4% sodium metasilicate. Tail w/90 sx Type III cement w/1% calcium chloride, 0.25 pps celloflake, and 0.2% fluid loss (510 cu.ft. of slurry, 50% excess to circulate to surface).

Note: If open hole logs are run, cement volumes will be based on 25% excess over caliper volumes.

BOP and tests:

Surface to TD - 11" 2000 psi (minimum double gate BOP stack (Reference Figure #1). Prior to drilling out surface casing, test BOP and casing to 600 psi/30 min.

Completion - 6" 2000 psi (minimum) double gate BOP stack (Reference Figure #2). Prior to completion operations, test BOP and casing to 2000 psi/15 min.

From surface to TD - choke manifold (Reference Figure #3).

Pipe rams will be actuated at least once each day and blind rams actuated once each trip to test proper functioning. An upper kelly cock valve with handle and drill string safety valves to fit each drill string will be maintained and available on the rig floor.

Additional information:

- * The Pictured Cliffs formation will be completed.
- * Anticipated pore pressure for the Pictured Cliffs is 500 psi.
- * This gas is dedicated.
- * W/2 of Section 21 is dedicated to the Blanco Pictured Cliffs.

Sean Corrigan
Drilling Engineer

February 17, 2004
Date



GulfTerra
Field Services LLC

BLANCO GATHERING SYSTEM

DWG. NO. BL002-034-01

LINE BURLINGTON RESOURCES OIL & GAS CO.- SAN JUAN 29-7 UNIT NO. 192

WD NO. _____

FROM 0+00 = 15+63.90 ON BURL. RES. O & G CO.- SAN JUAN 29-7 UNIT NO. 130M

RW NO. 0370397

(BLL2-13-1, R/W NO. 967190)(MC NO. 99441)

DATE 12/02/03

SCALE 1" = 1000'

SURVEYED 11/19/03

COUNTY RIO ARriba

STATE NEW MEXICO

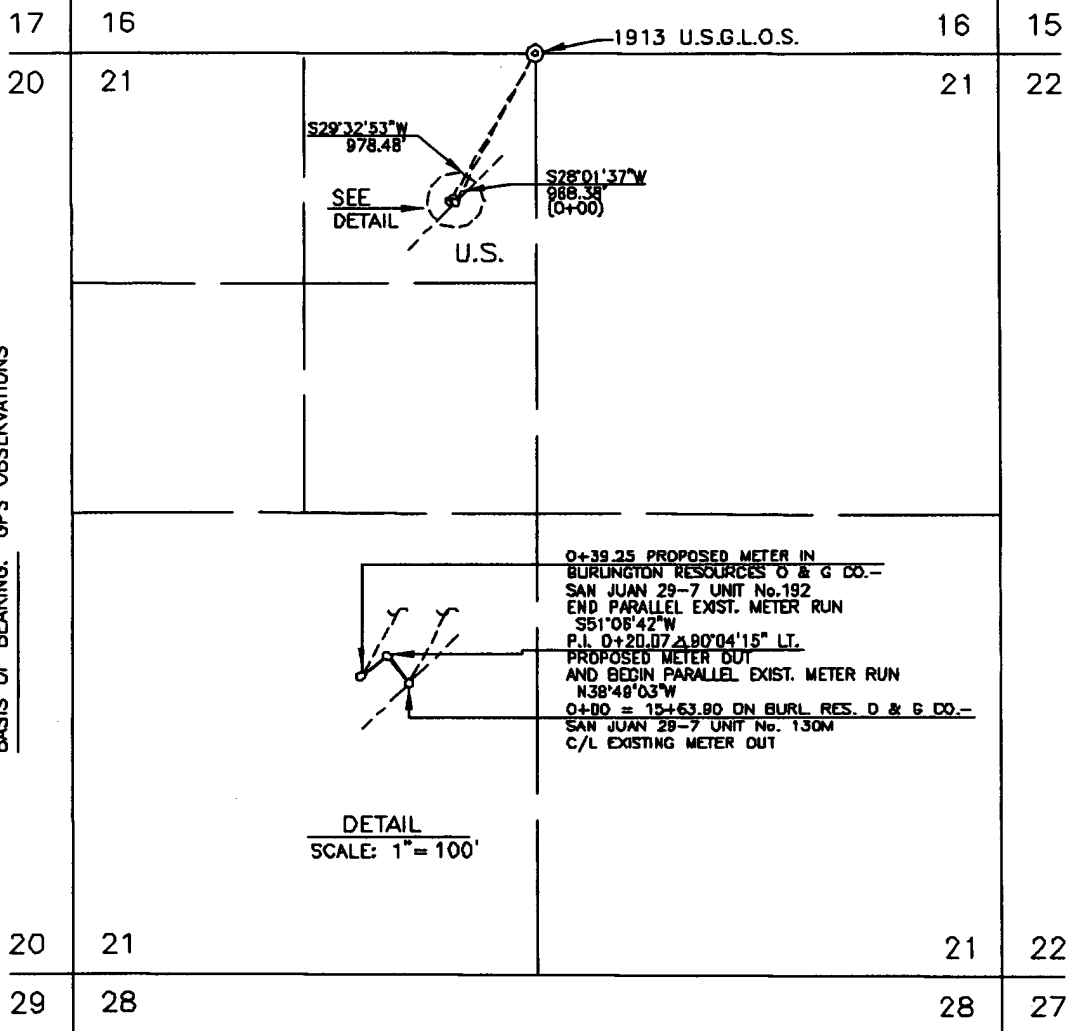
SECTION 21

TOWNSHIP 29-N

RANGE 07-W, N.M.P.M.

N

T-29-N, R-07-W, N.M.P.M.
BASIS OF BEARING: GPS OBSERVATIONS



OWN. BY DB CONSTR. COMMENCED _____ APPL. DWG. _____ SLACK CHAIN _____
CKD. BY MD CONSTR. COMPLETED _____ DATE _____ PIPE SIZE 4.50" O.D.

PRINT RECORD

PIPE DATA

METER STA. NO.

7 SJ DIST. 12/09/03

NOTE: WELL FLAG
SURVEY ON EXISTING LOCATION
PROPOSED PARALLEL METER SET
WELL FLAG ON EXISTING LOCATION

SUBDIVISION

OWNER

LESSEE

METER(S)

RODS

ACRE(S)

PORTIONS OF SEC. 21

UNITED STATES

JUAN I. LOPEZ, ESTATE

2.379

0.036