

District I  
1625 N. French Dr., Hobbs, NM 88240  
District II  
811 S. 1st Street, Artesia, NM 88210  
District III  
1000 Rio Brazos Rd., Aztec, NM 87410  
District IV  
1220 S. St. Francis Dr., Santa Fe, NM 87505

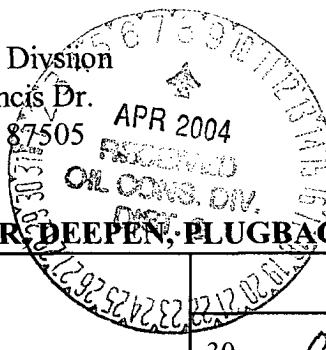
State of New Mexico  
Energy, Minerals & Natural Resources

Form C-101  
Revised March 17, 1999

Oil Conservation Division  
1220 S. St. Francis Dr.  
Santa Fe, NM 87505

Submit to appropriate District Office  
State Lease - 6 Copies  
Fee Lease - 5 Copies

☐ AMENDED REPORT



APPLICATION FOR PERMIT TO DRILL, RE-ENTER, DEEPEN, PLUGBACK, OR ADD A ZONE

<sup>1</sup> Operator Name and Address <b>XTO Energy Inc.</b> <b>2700 Farmington Ave., Bldg. K. Ste 1</b>		<sup>2</sup> OGRID Number <b>167067</b>
<sup>4</sup> Property Code <b>22824</b>	<sup>5</sup> Property Name <b>State Gas Com "BJ"</b>	<sup>3</sup> API Number <b>32275</b>
		<sup>6</sup> Well No. <b>#3</b>

<sup>7</sup> Surface Location

UL or lot no.	Section	Township	Range	Lot. Idn	Feet from the	North/South Line	Feet from the	East/West line	County
C	2	30N	13W		780'	North	1705'	West	San Juan

<sup>8</sup> Proposed Bottom Hole Location If Different From Surface

UL or lot no.	Section	Township	Range	Lot. Idn	Feet from the	North/South Line	Feet from the	East/West line	County

<sup>9</sup> Proposed Pool 1 <b>Basin Fruitland Coal</b>	<sup>10</sup> Proposed Pool 2
---	-------------------------------

<sup>11</sup> Work Type Code <b>N</b>	<sup>12</sup> Well Type Code <b>G</b>	<sup>13</sup> Cable/Rotary <b>Rotary</b>	<sup>14</sup> Lease Type Code <b>State</b>	<sup>15</sup> Ground Level Elevation <b>5,927' Ground Level</b>
<sup>16</sup> Multiple <b>N</b>	<sup>17</sup> Proposed Depth <b>2,200'</b>	<sup>18</sup> Formation <b>Fruitland Coal</b>	<sup>19</sup> Contractor <b>Stewart Bros.</b>	<sup>20</sup> Spud Date <b>Summer 2004</b>

<sup>21</sup> Proposed Casing and Cement Program

Hole Size	Casing Size	Casing weight/foot	Setting Depth	Sacks of Cement	Estimated TOC
8-3/4"	7"	20.0#, J-55, STC	200'	75 sx	Surface
6-1/4"	4-1/2"	10.5#, J-55, STC	2,200'	195 sx	Surface

<sup>22</sup> Describe the proposed program. If this application is to DEEPEN or PLUG BACK, give the data on the present productive zone and proposed new productive zone. Describe the blowout prevention program, if any. Use additional sheets if necessary.

Surface: 75 sx of Type III cement w/2% CC & 1/4#/sx cello (14.8 ppg, 1.39 cuft). Circ to surface.

Production: 125 sx Type III with 8% gel & 1/4#/sx cello mixed at 11.4 ppg & 3.03 cuft/sx followed by 70 sx Type III cmt w/1% CC & 1/4#/sx cello mixed at 14.5 ppg & 1.41 cuft/sx. Circ to surface.

Remarks: Use 40% excess over volume calculated from op hole logs to determine final cement volume.

BOP diagram is attached.

<sup>23</sup> I hereby certify that the information given above is true and complete to the best of my knowledge and belief.

Signature: *Jeffrey W. Patton* 4/6/04

Printed name: **Jeffrey W. Patton**

Title: **Drilling Engineer**

Date:

Phone:

OIL CONSERVATION DIVISION

Approved by: *[Signature]*

Title: **DEPUTY OIL & GAS INSPECTOR, DIST. #3**

Approval Date: **APR - 8 2004**

Expiration Date: **APR - 8 2005**

Conditions of Approval:

Attached ☐

DISTRICT I  
1625 N. French Dr., Hobbs, N.M. 88240

DISTRICT II  
1301 W. Grand Ave., Artesia, N.M. 88210

DISTRICT III  
1000 Rio Brazos Rd., Aztec, N.M. 87410

DISTRICT IV  
1220 South St. Francis Dr., Santa Fe, NM 87505

State of New Mexico  
Energy, Minerals & Natural Resources Department

OIL CONSERVATION DIVISION

1220 South St. Francis Dr.  
Santa Fe, NM 87505

Form C-102

Revised June 10, 2003

Submit to Appropriate District Office

State Lease - 4 Copies

Fee Lease - 3 Copies

☐ AMENDED REPORT

WELL LOCATION AND ACREAGE DEDICATION PLAT

<sup>1</sup> API Number 30-045-32275		<sup>2</sup> Pool Code 71629	<sup>3</sup> Pool Name Basin Fruitland Coal
<sup>4</sup> Property Code 22824	<sup>5</sup> Property Name STATE GAS COM B J		<sup>6</sup> Well Number 3
<sup>7</sup> GRID No. 167067	<sup>8</sup> Operator Name XTO ENERGY INC.		<sup>9</sup> Elevation 5927'

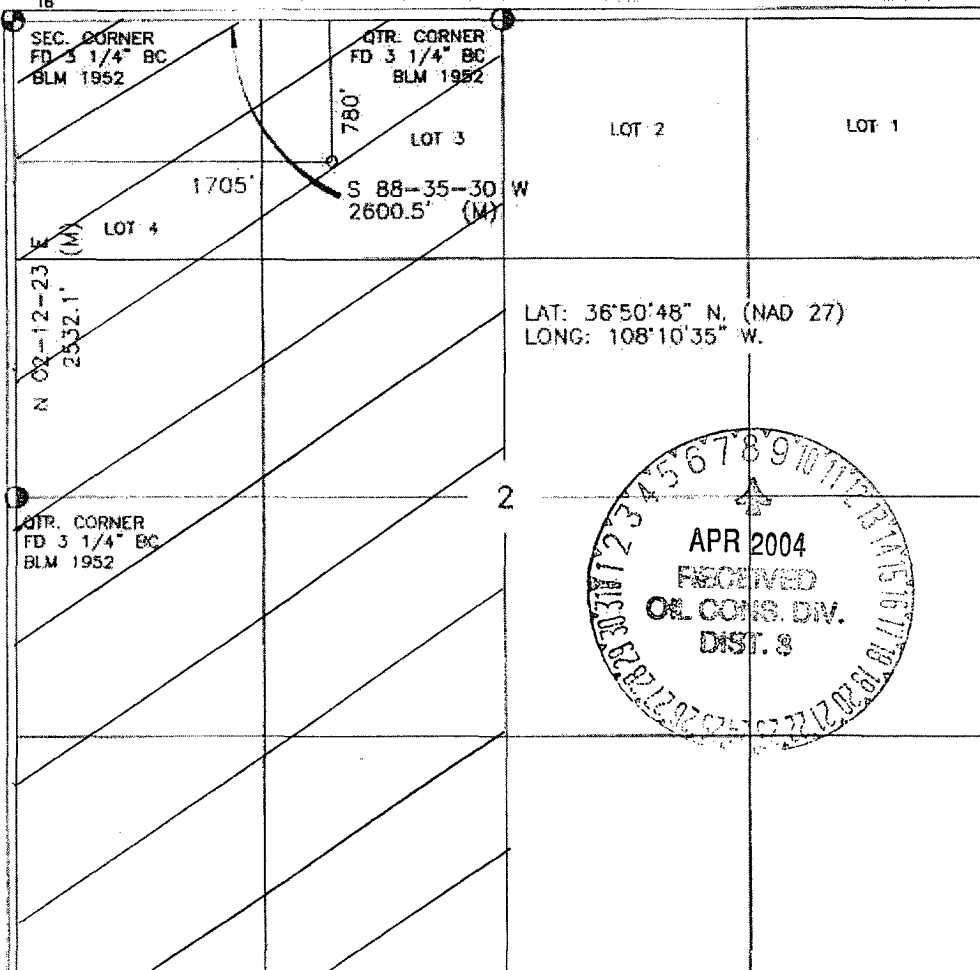
<sup>10</sup> Surface Location

UL or lot no.	Section	Township	Range	Lot Idn	Feet from the	North/South line	Feet from the	East/West line	County
C	2	30-N	13-W		780	NORTH	1705	WEST	SAN JUAN

<sup>11</sup> Bottom Hole Location If Different From Surface

UL or lot no.	Section	Township	Range	Lot Idn	Feet from the	North/South line	Feet from the	East/West line	County
<sup>12</sup> Dedicated Acres 319.10 w/2			<sup>13</sup> Joint or Infill I		<sup>14</sup> Consolidation Code		<sup>15</sup> Order No.		

NO ALLOWABLE WILL BE ASSIGNED TO THIS COMPLETION UNTIL ALL INTERESTS HAVE BEEN CONSOLIDATED  
OR A NON-STANDARD UNIT HAS BEEN APPROVED BY THE DIVISION



17 OPERATOR CERTIFICATION

I hereby certify that the information contained herein is true and complete to the best of my knowledge and belief

*Helly K Small*  
Signature  
Helly K Small  
Printed Name  
Drilling Assistant  
Title  
4/6/04  
Date

18 SURVEYOR CERTIFICATION

I hereby certify that the well location shown on this plat was plotted from field notes of actual surveys made by me or under my supervision, and that the same is true and correct to the best of my belief.

*DAVID A. JOHNSON*  
Signature  
Date of Survey  
14827  
Professional Surveyor  
14827  
Certificate Number

# BOP SCHEMATIC FOR DRILLING OPERATIONS CLASS 1 (2M) NORMAL PRESSURE

## TESTING PROCEDURE

### 1. Test BOP after installation:

Pressure test BOP to 200-300  
psig (low pressure) for 5 min.

Test BOP to Working Press or  
to 70% internal yield of surf csg  
(10 min).

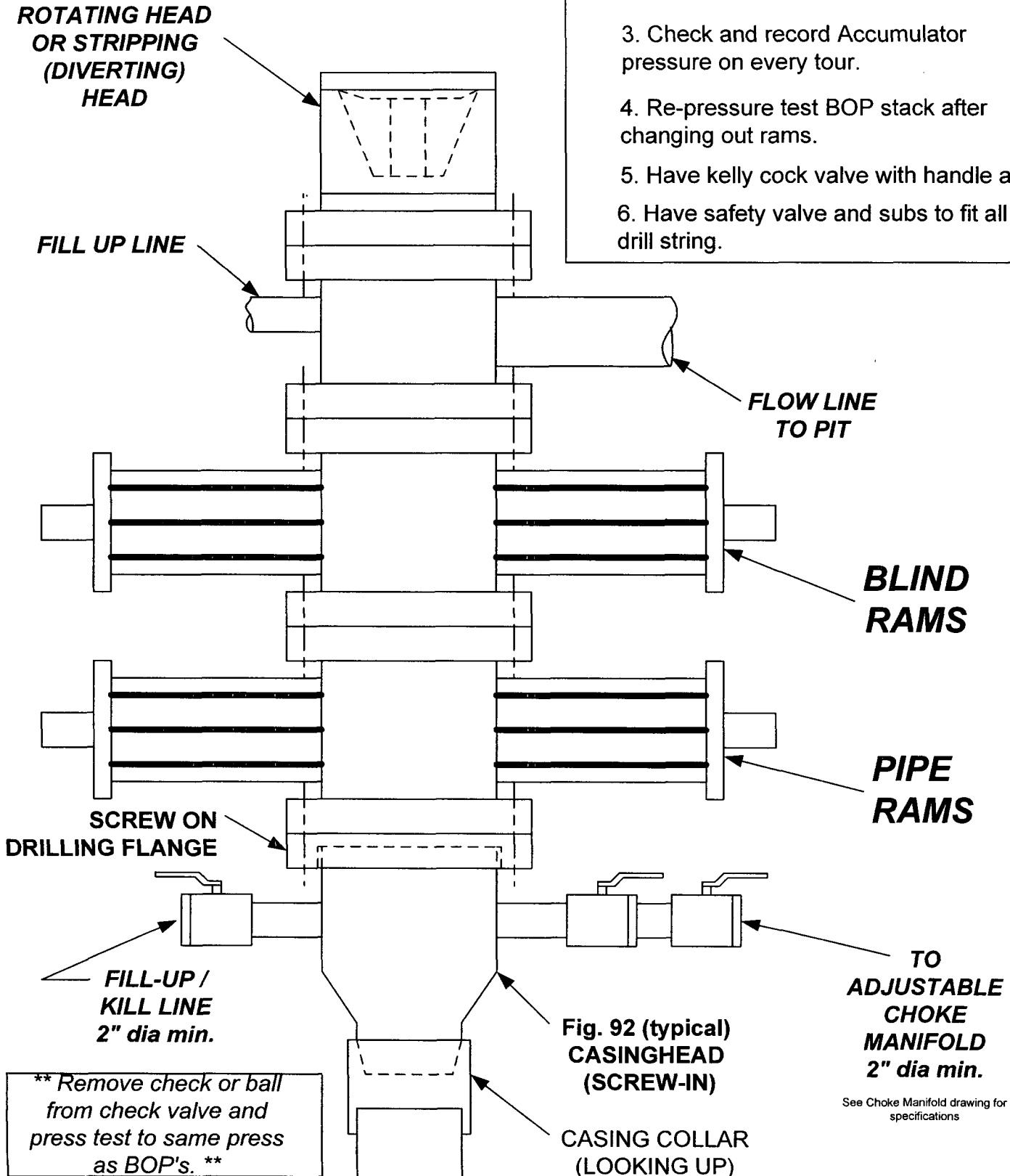
### 2. Test operation of (both) rams on every trip.

### 3. Check and record Accumulator pressure on every tour.

### 4. Re-pressure test BOP stack after changing out rams.

### 5. Have kelly cock valve with handle available.

### 6. Have safety valve and subs to fit all sizes of drill string.



**\*\* Remove check or ball  
from check valve and  
press test to same press  
as BOP's. \*\***

See Choke Manifold drawing for  
specifications