

UNITED STATES  
DEPARTMENT OF THE INTERIOR  
BUREAU OF LAND MANAGEMENT

FORM APPROVED  
OMB No. 1004-0136  
Expires November 30, 2000

APPLICATION FOR PERMIT TO DRILL OR REENTER

RECEIVED

2003 APR 28 AM 11: 27

070 Farmington, NM

1a. Type of Work: ☒ DRILL ☐ REENTER

1b. Type of Well: ☐ Oil Well ☒ Gas Well ☐ Other ☒ Single Zone ☐ Multiple Zone

2. Name of Operator  
**CALPINE NATURAL GAS L. P.**

3a. Address  
**7415 EAST MAIN STREET  
FARMINGTON, NM 87401**

3b. Phone No. (include area code)  
**(505) 327-4892**

4. Location of Well (Report location clearly and in accordance with any State requirements. \*)

At surface **950' FNL & 1915' FWL**  
At proposed prod. zone **SAME**

14. Distance in miles and direction from nearest town or post office\*  
**15 AIR MILES SOUTH OF FARMINGTON**

15. Distance from proposed\* location to nearest property or lease line, ft.  
(Also to nearest drig. unit line, if any) **660'**

16. No. of Acres in lease  
**2,373.98**

17. Spacing Unit dedicated to this well  
**WEST HALF (312.40 ACRES)**

18. Distance from proposed location\* to nearest well, drilling, completed, applied for, on this lease, ft. **1,892'**

19. Proposed Depth  
**1,460'**

20. BLM/BIA Bond No. on file  
**BLM NMB000019 (STATE WIDE)**

21. Elevations (Show whether DF, KDB, RT, GL, etc.)  
**5,975' GL**

22. Approximate date work will start\*  
**UPON APPROVAL**

23. Estimated duration  
**2 WEEKS**

24. Attachments

The following, completed in accordance with the requirements of Onshore Oil and Gas Order No.1, shall be attached to this form:

1. Well plat certified by a registered surveyor.
2. A Drilling Plan.
3. A Surface Use Plan (if the location is on National Forest System Lands, the SUPO shall be filed with the appropriate Forest Service Office).

4. Bond to cover the operations unless covered by an existing bond on file (see Item 20 above).
5. Operator certification.
6. Such other site specific information and/or plans as may be required by the authorized officer.

Comments

DRILLING OPERATIONS AUTHORIZED ARE  
SUBJECT TO COMPLIANCE WITH ATTACHED  
"GENERAL REQUIREMENTS".

This action is subject to technical and  
procedural review pursuant to 43 CFR 3165.3  
and appeal pursuant to 43 CFR 3165.4



cc:BIA, BLM (& OCD), Cartaya, NAPI, Thompson, Tribe

25. Signature 	Name (Printed/Typed) <b>BRIAN WOOD</b>	Date <b>4-21-03</b>
Title <b>CONSULTANT</b>	PHONE: <b>505 466-8120</b>	FAX: <b>505 466-9682</b>
Approved by (Signature) <b>/s/ David J. Mankiewicz</b>	Name (Printed/Typed)	Date <b>APR 13 2004</b>
Title	Office	

Application approval does not warrant or certify the the applicant holds legal or equitable title to those rights in the subject lease which would entitle the applicant to conduct operations thereon.

Conditions of approval, if any, are attached.

Title 18 U.S.C. Section 1001 and Title 43 U.S.C. Section 1212, make it a crime for any person knowingly and willfully to make to any department or agency of the United States any false, fictitious or fraudulent statements or representations as to any matter within its jurisdiction.

HOLD C104 FOR Name change to NMOCB

Gallegos Federal 20-15-7 #?

See Attached conditions of Approval

District I  
PO Box 1980, Hobbs, NM 88241-1980

District II  
PO Drawer DD, Artesia, NM 88211-0719

District III  
1000 Rio Brazos Rd., Aztec, NM 87410

District IV  
PO Box 2088, Santa Fe, NM 87504-2088

State of New Mexico  
Energy, Minerals & Natural Resources Department

OIL CONSERVATION DIVISION  
PO Box 2088  
Santa Fe, NM 87504-2088

Form C-102  
Revised February 21, 1994  
Instructions on back  
Submit to Appropriate District Office  
State Lease - 4 Copies  
Fee Lease - 3 Copies

☐ AMENDED REPORT

WELL LOCATION AND ACREAGE DEDICATION PLAT

*API Number <b>30-045-31652</b>		*Pool Code 71629	*Pool Name BASIN FRUITLAND COAL
*Property Cod <b>33873</b>	*Property Name <del>QUIDDITCH</del> <b>Quidditch</b>		*Well Number <b>7</b>
*OGRIU INU <del>194807</del> <b>214274</b>	*Operator Name CALPINE NATURAL GAS		*Elevation 5975

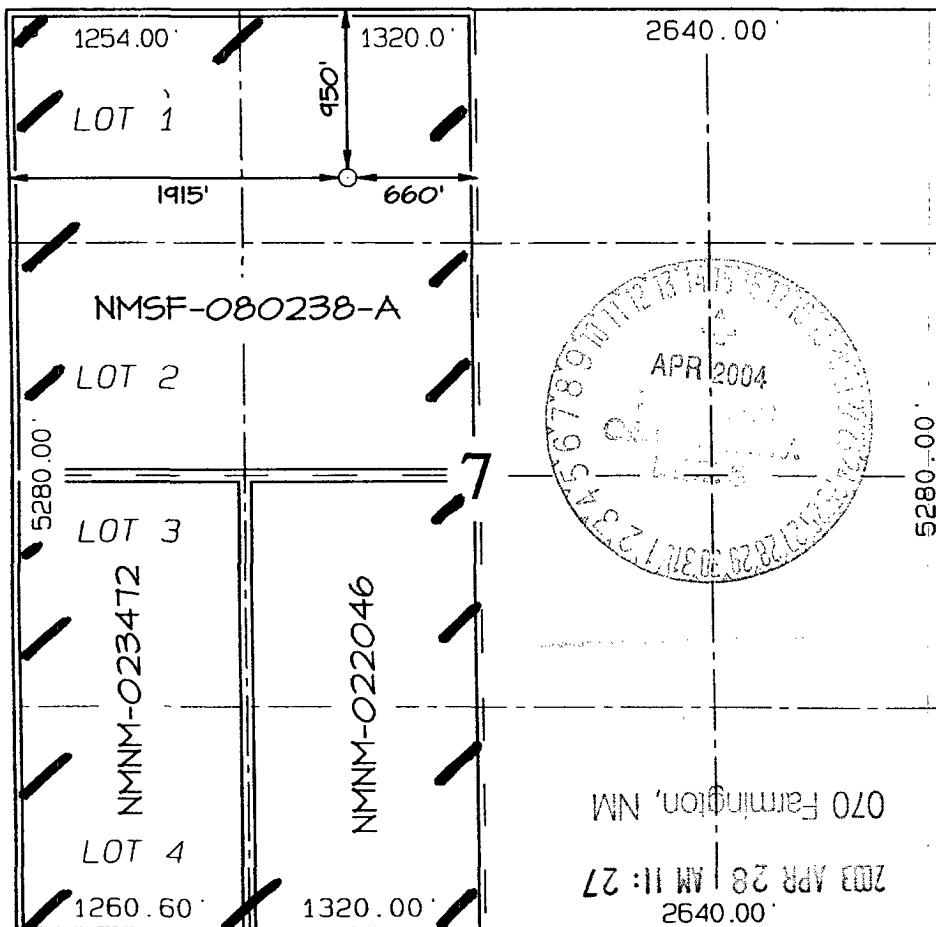
<sup>10</sup> Surface Location

UL or lot no.	Section	Township	Range	Lot Idn	Feet from the	North/South line	Feet from the	East/West line	County
C	7	26N	12W		950	NORTH	1915	WEST	SAN JUAN

<sup>11</sup> Bottom Hole Location If Different From Surface

UL or lot no.	Section	Township	Range	Lot Idn	Feet from the	North/South line	Feet from the	East/West line	County
<sup>12</sup> Dedicated Acres 312.40 Acres - (W/2)					<sup>13</sup> Joint or Infill		<sup>14</sup> Consolidation Code C		<sup>15</sup> Order No.

NO ALLOWABLE WILL BE ASSIGNED TO THIS COMPLETION UNTIL ALL INTERESTS HAVE BEEN CONSOLIDATED  
OR A NON-STANDARD UNIT HAS BEEN APPROVED BY THE DIVISION



<sup>17</sup> OPERATOR CERTIFICATION

I hereby certify that the information contained herein is true and complete to the best of my knowledge and belief.

Signature

**BRIAN WOOD**

Printed Name

**CONSULTANT**

Title

**APR. 21, 2003**

Date

<sup>18</sup> SURVEYOR CERTIFICATION

I hereby certify that the well location shown on this plat was plotted from field notes of actual surveys made by me or under my supervision, and that the same is true and correct to the best of my belief.

Survey Date: FEBRUARY 10, 2003

Signature and Seal of Professional Surveyor



**JASON C. EDWARDS**

Certificate Number 15269

RECEIVED

Calpine Natural Gas L. P.  
Quidditch #7  
950' FNL & 1915' FWL  
Sec. 7, T. 26 N., R. 12 W.  
San Juan County, New Mexico

PAGE 1

## Drilling Program

### 1. ESTIMATED FORMATION TOPS

<u>Formation</u>	<u>GL Depth</u>	<u>KB Depth</u>	<u>Elevation</u>
Nacimiento	000'	5'	+5,975'
Ojo Alamo Sandstone	50'	55'	+5,925'
Kirtland Shale	100'	105'	+5,875'
Top Fruitland	854'	859'	+5,121'
Lower Fruitland Coal	1,144'	1,149'	+4,831'
Pictured Cliffs Sandstone	1,184'	1,189'	+4,791'
Total Depth (TD)*	1,460'	1,465'	+4,515'

\* all elevations reflect the ungraded ground level of 5,975'

### 2. NOTABLE ZONES

<u>Gas Zones</u>	<u>Water Zones</u>	<u>Coal Zones</u>
Fruitland	Ojo Alamo	Fruitland
Pictured Cliffs	Fruitland	

Water zones will be protected with casing, cement, and weighted mud. Fresh water encountered during drilling will be recorded by depth, cased, and cemented. Oil and gas shows will be tested for commercial potential based on the well site geologist's recommendations.

### 3. PRESSURE CONTROL

The drilling contract has not yet been awarded, thus the exact BOP model to be used is not yet known. (A typical 2,000 psi model is on PAGE 3.) Double ram or annular 2,000 psi system with a rotating head will be used. All ram

Calpine Natural Gas L. P.  
Quidditch #7  
950' FNL & 1915' FWL  
Sec. 7, T. 26 N., R. 12 W.  
San Juan County, New Mexico

PAGE 2

preventers and related equipment will be hydraulically tested at nipple up and after any use under pressure to 1,000 psi.

Blind rams will be hydraulically activated and checked for operational readiness each time pipe is pulled out of the hole. All checks of the BOP stack and equipment will be noted on the daily drilling report. BOP equipment will include a kelly cock, floor safety valve, and choke manifold all rated to 2,000 psi. Maximum expected pressure is  $\approx 585$  psi.

#### 4. CASING & CEMENT

<u>Hole Size</u>	<u>O. D.</u>	<u>Weight (lb/ft)</u>	<u>Grade</u>	<u>Age</u>	<u>GL Setting Depth</u>
8-3/4"	7"	20	K-55	New	120'
6-1/4"	4-1/2"	10.5	K-55	New	1,460'

Surface casing will be cemented to surface with  $\approx 59$  cubic feet ( $\approx 50$  sacks) Class B + 2%  $\text{CaCl}_2$ . Volume is based on 100% excess, yield of 1.18 cubic feet per sack, and slurry weight of 15.6 pounds per gallon. W. O. C. = 12 hours. Pressure test surface casing to 600 psi for 30 minutes.

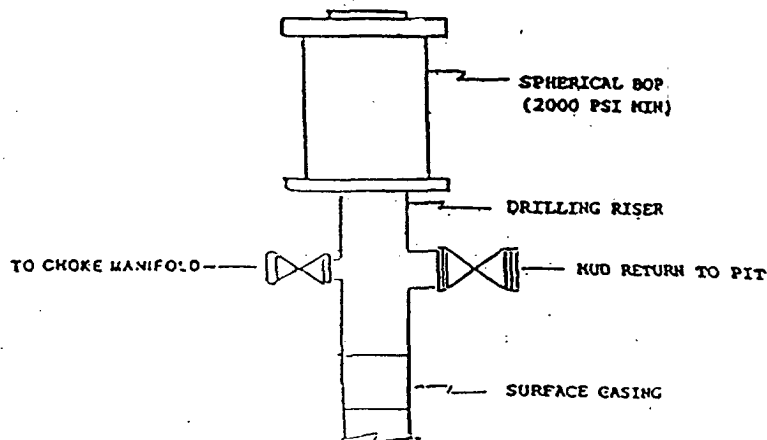
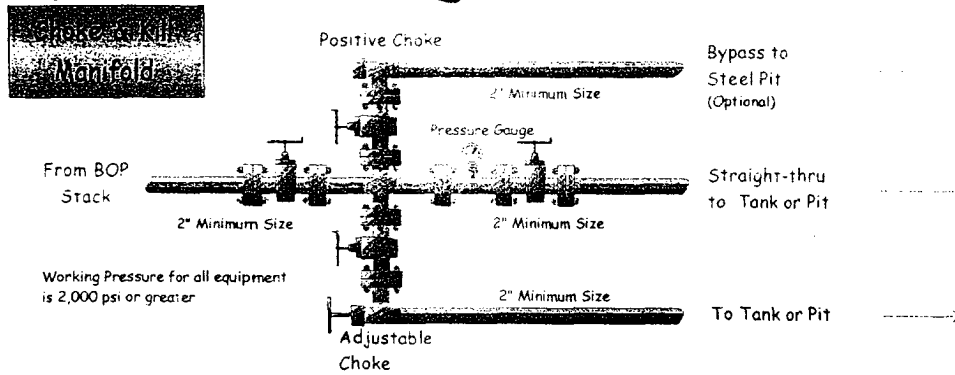
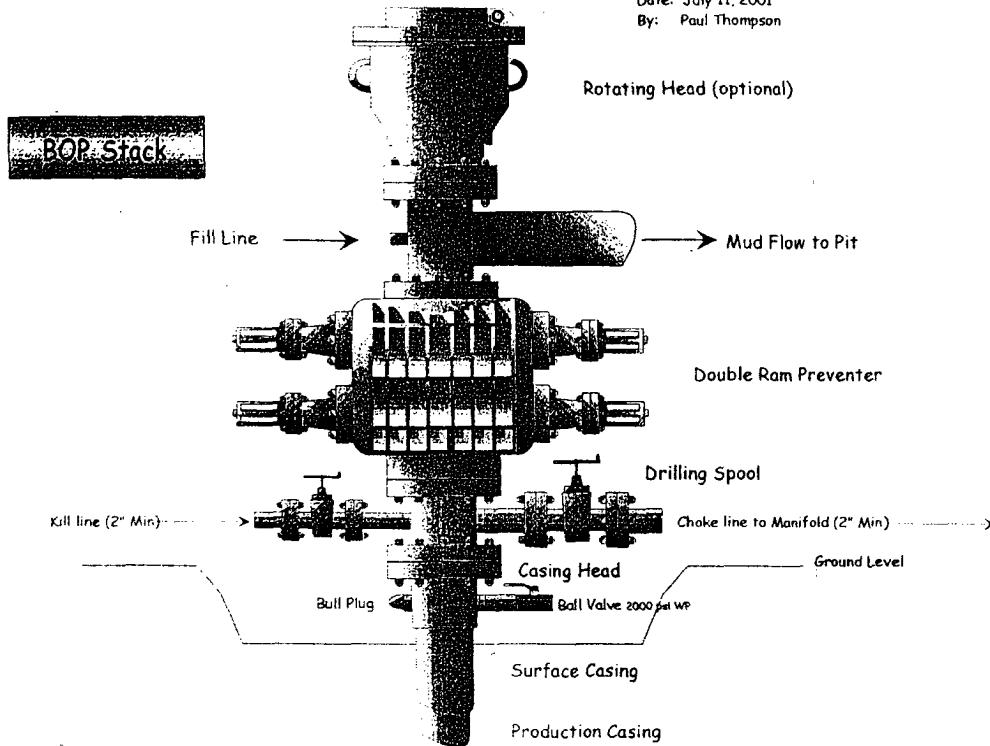
Production casing hole will be cleaned of rock chips by circulating  $\geq 150\%$  of hole volume with mud. Thirty barrels of fresh water will next be circulated. Lead with  $\approx 247$  cubic feet ( $\approx 120$  sacks) of Class B with 2% metasilicate (yield = 2.06 cubic feet per sack, slurry weight = 12.5 pounds per gallon). Tail with  $\approx 59$  cubic feet ( $\approx 50$  sacks) of Class B with 2%  $\text{CaCl}_2$  (yield = 1.18 cubic feet per sack, slurry weight = 15.6 pounds per gallon). Total cement volume = 306 cubic feet @ 100% excess and circulating to surface.

Production casing will have 4-1/2" cement guide shoe and self fill float collar. Float will be placed one joint above the shoe. Five centralizers will be spaced on every other joint starting above the shoe. Five turbolizers will be placed on every other joint starting from the top of the well.

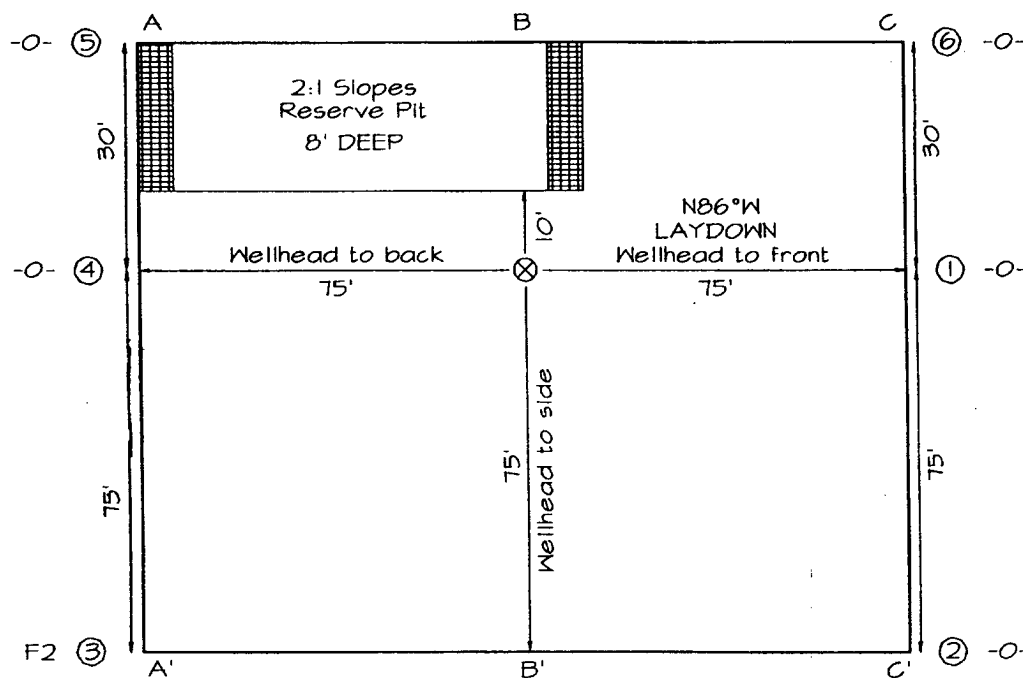
# Calpine Natural Gas Company

## Well Control Equipment Schematic for 2M Service

Date: July 11, 2001  
By: Paul Thompson



**CALPINE NATURAL GAS COMPANY QUIDDITCH #7**  
**950' FNL & 1915' FWL, SECTION 7, T26N, R12W, NMPM**  
**SAN JUAN COUNTY, NEW MEXICO GROUND ELEVATION: 5975'**



**LATITUDE: 36°30'27"**  
**LONGITUDE: 108°09'16"**  
DATUM: NAD1927

PLAT NOTE:

\*SURFACE OWNER\*  
 Navajo Tribal Trust

A-A'						
5985'						
5975'						
5965'						

B-B'						
5985'						
5975'						
5965'						

C-C'						
5985'						
5975'						
5965'						

Note: Contractor should call One-Call for location of any marked or unmarked buried pipelines or cables on well pad and/or access road at least two (2) working days prior to construction