

UNITED STATES
DEPARTMENT OF THE INTERIOR
BUREAU OF LAND MANAGEMENT

RECEIVED

APPLICATION FOR PERMIT TO DRILL, DEEPEN, OR PLUG BACK

1a. Type of Work DRILL	5. Lease Number SF-077317 Unit Reporting Number 8706 Farmington, NM
1b. Type of Well GAS	6. If Indian, All. or Tribe
2. Operator BURLINGTON RESOURCES Oil & Gas Company	7. Unit Agreement Name
3. Address & Phone No. of Operator PO Box 4289, Farmington, NM 87401 (505) 326-9700	8. Farm or Lease Name Cooper 9. Well Number #8R
4. Location of Well 1570' FNL, 660' FWL Latitude 36° 44.5877'N, Longitude 108° 02.3103'W	10. Field, Pool, Wildcat Fulcher Kutz Pictured Cliffs 11. Sec., Twn, Rge, Mer. (NMPM) Sec. 7, T29N, R11W API # 30-045- 32198
14. Distance in Miles from Nearest Town 5.1 miles to Bloomfield Post Office	12. County San Juan 13. State NM
15. Distance from Proposed Location to Nearest Property or Lease Line 660'	
16. Acres in Lease	17. Acres Assigned to Well 150.92 NW/4
18. Distance from Proposed Location to Nearest Well, Drig, Compl, or Applied for on this Lease 1268'	
19. Proposed Depth 2136'	20. Rotary or Cable Tools Rotary
21. Elevations (DF, FT, GR, Etc.) 5762' GR	22. Approx. Date Work will Start
23. Proposed Casing and Cementing Program See Operations Plan attached	
24. Authorized by: <u>Jon Clark</u> Regulatory/Compliance Specialist	<u>2/25/04</u> Date

PERMIT NO. _____ APPROVAL DATE _____
APPROVED BY DM TITLE _____ DATE 4-23-04

Archaeological Report attached

Threatened and Endangered Species Report attached

NOTE: This format is issued in lieu of U.S. BLM Form 3160-3

Title 18 U.S.C. Section 1001, makes it a crime for any person knowingly and willfully to make to any department or agency of the United States any false, fictitious or fraudulent statements or presentations as to any matter within its jurisdiction.

C OA: Compliance w/Rule 50

This action is subject to technical and procedural review pursuant to 43 CFR 3165.3 and appeal pursuant to 43 CFR 3165.4

DRILLING OPERATIONS AUTHORIZED ARE
SUBJECT TO COMPLIANCE WITH ATTACHED
"GENERAL REQUIREMENTS".

NMOCd

DISTRICT II
811 South First, Artesia, N.M. 88210DISTRICT III
4000 Rio Brazos Rd., Artec, N.M. 87410DISTRICT IV
2040 South Pacheco, Santa Fe, NM 87505

OIL CONSERVATION DIVISION

2040 South Pacheco
Santa Fe, NM 87505Submit to Appropriate District Office
State Lease - 4 Copies
Fee Lease - 3 Copies☐ AMENDED REPORT

WELL LOCATION AND ACREAGE DEDICATION PLAT

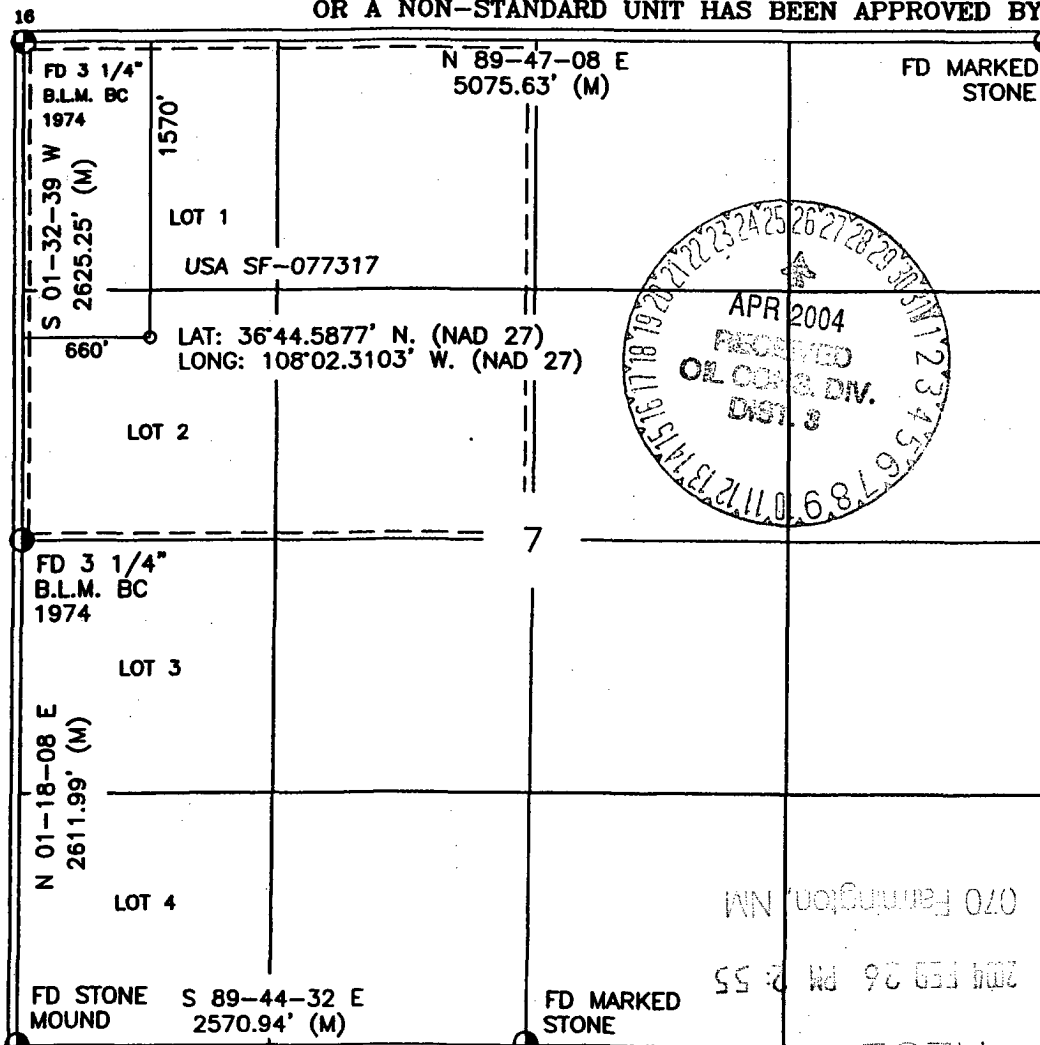
*API Number 30-045-32198	*Pool Code 77200	*Pool Name Fulcher Kutz Pictured Cliffs
*Property Code 18498	*Property Name COOPER	*Well Number 8R
*OGRID No. 14538	*Operator Name BURLINGTON RESOURCES OIL AND GAS COMPANY LP	*Elevation 5762'

10 Surface Location

UL or lot no.	Section	Township	Range	Lot Idn	Feet from the	North/South line	Feet from the	East/West line	County
E	7	29-N	11-W		1570'	NORTH	660'	WEST	SAN JUAN

11 Bottom Hole Location If Different From Surface

UL or lot no.	Section	Township	Range	Lot Idn	Feet from the	North/South line	Feet from the	East/West line	County
Dedicated Acres NW/150.92					Joint or Infill		Consolidation Code		Order No.

NO ALLOWABLE WILL BE ASSIGNED TO THIS COMPLETION UNTIL ALL INTERESTS HAVE BEEN CONSOLIDATED
OR A NON-STANDARD UNIT HAS BEEN APPROVED BY THE DIVISION

17 OPERATOR CERTIFICATION

I hereby certify that the information contained herein
is true and complete to the best of my knowledge and
belief

Signature Joni Clark
Printed Name Joni Clark
Title Regulatory Specialist
Date 2/25/04

18 SURVEYOR CERTIFICATION

I hereby certify that the well location shown on this plat
was plotted from field notes of actual surveys made by
me or under my supervision, and that the same is true
and correct to the best of my belief.

Date of Survey 10-17-03
Signature and Seal of Professional Surveyor:
DAVID A. JOHNSON
REGISTERED PROFESSIONAL SURVEYOR
14827

Certificate Number

OPERATIONS PLAN

Well Name: Cooper 8R
Location: 1570' FNL, 660' FWL, Section 7, T-29-N, R-11-W
San Juan County, New Mexico
Latitude 36° 44.5877'N, Longitude 108° 02.3103'W
Formation: Fulcher Kutz Pictured Cliffs
Elevation: 5762' GL

Formation:	Top	Bottom	Contents
Surface	San Jose	589'	
Ojo Alamo	589'	729'	aquifer
Kirtland	729'	1705'	gas
Fruitland Coal	1705'	1936'	gas
Pictured Cliffs	1936'	2036'	gas
Lewis	2036'		
Total Depth	2136'		

Logging Program:

Open hole - none
Cased hole - CBL-CCL-GR TD to surface

Coring Program: None

Mud Program:

using MOTE rig: air / air-mist

Interval	Type	Weight	Vis.	Fluid Loss
0- 120'	Spud	8.4-9.0	40-50	no control
120-2136'	FW	8.4-9.0	32-45	no control

Casing Program (as listed, equivalent, or better):

Hole Size	Depth Interval	Csg. Size	Wt.	Grade
8 3/4"	0 - 120'	7"	20.0#	J-55
6 1/4"	0 - 2136'	4 1/2"	10.5#	J-55

Tubing Program:

0' -2136'	2 3/8"	4.7#	J-55
-----------	--------	------	------

Float Equipment: 7" surface casing - saw tooth guide shoe.
Centralizers will be run in accordance with Onshore Order #2.

4 1/2" production casing - float shoe on bottom. Standard centralizers run every third joint above shoe to the base of the Ojo Alamo @ 729'. Two turbolizing type centralizers - one below and one into the base of the Ojo Alamo @ 729'. Standard centralizers thereafter every fourth joint up to the base of the surface pipe.

Wellhead Equipment: 7" x 4 1/2" x 2 3/8" 2000 psi screw on independent wellhead.

Cementing:

7" surface casing pre-set drilled- cement with 34 sxs Type I, II cement with 20% flyash mixed at 14.5 ppg, 1.61 cu ft per sack yield. (Bring cement to surface). Wait on cement for 24 hours for pre-set holes before pressure testing or drilling out from under surface.

7" surface casing conventionally drilled - cement with 42 sxs Type III cement with 0.25 pps Celloflake, 3% calcium chloride. (54 cu ft-200% excess, bring cement to surface). Wait on cement appropriate time until cement achieves 250 psi compressive strength at 60 degrees F. prior to nipple up of BOPE. Wait on cement for 8 hrs for conventionally set holes before pressure testing or drilling out from under surface.

Saw tooth guide shoe on bottom. Bowspring centralizers will be run in accordance with Onshore Order #2.

4 1/2" production casing - Lead w/94 sx Premium Lite cement w/3% calcium chloride, 0.25 pps celloflake, 5 pps LCM-1, 0.4% fluid loss, 0.4% sodium metasilicate. Tail w/90 sx Type III cement w/1% calcium chloride, 0.25 pps celloflake, and 0.2% fluid loss (324 cu.ft. of slurry, 50% excess to circulate to surface).

Note: If open hole logs are run, cement volumes will be based on 25% excess over caliper volumes.

BOP and tests:

Surface to TD - 7 1/16" 2000 psi (minimum single spherical annular BOP stack (Reference Figure #1). Prior to drilling out surface casing, test BOP and casing to 400 psi/30 min.

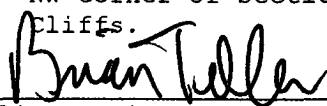
Completion - 6" 2000 psi (minimum) double gate BOP stack (Reference Figure #2). Prior to completion operations, test BOP and casing to 2000 psi/15 min.

From surface to TD - choke manifold (Reference Figure #3).

Pipe rams will be actuated at least once each day and blind rams actuated once each trip to test proper functioning. An upper kelly cock valve with handle and drill string safety valves to fit each drill string will be maintained and available on the rig floor.

Additional information:

- * The Pictured Cliffs formation will be completed.
- * Anticipated pore pressure for the Pictured Cliffs is 500 psi.
- * This gas is dedicated.
- * NW corner of Section 7 is dedicated to the Fulcher Kutz Pictured Cliffs.


Drilling Engineer

2-25-64
Date

Drilling Rig

2000 psi BOP System

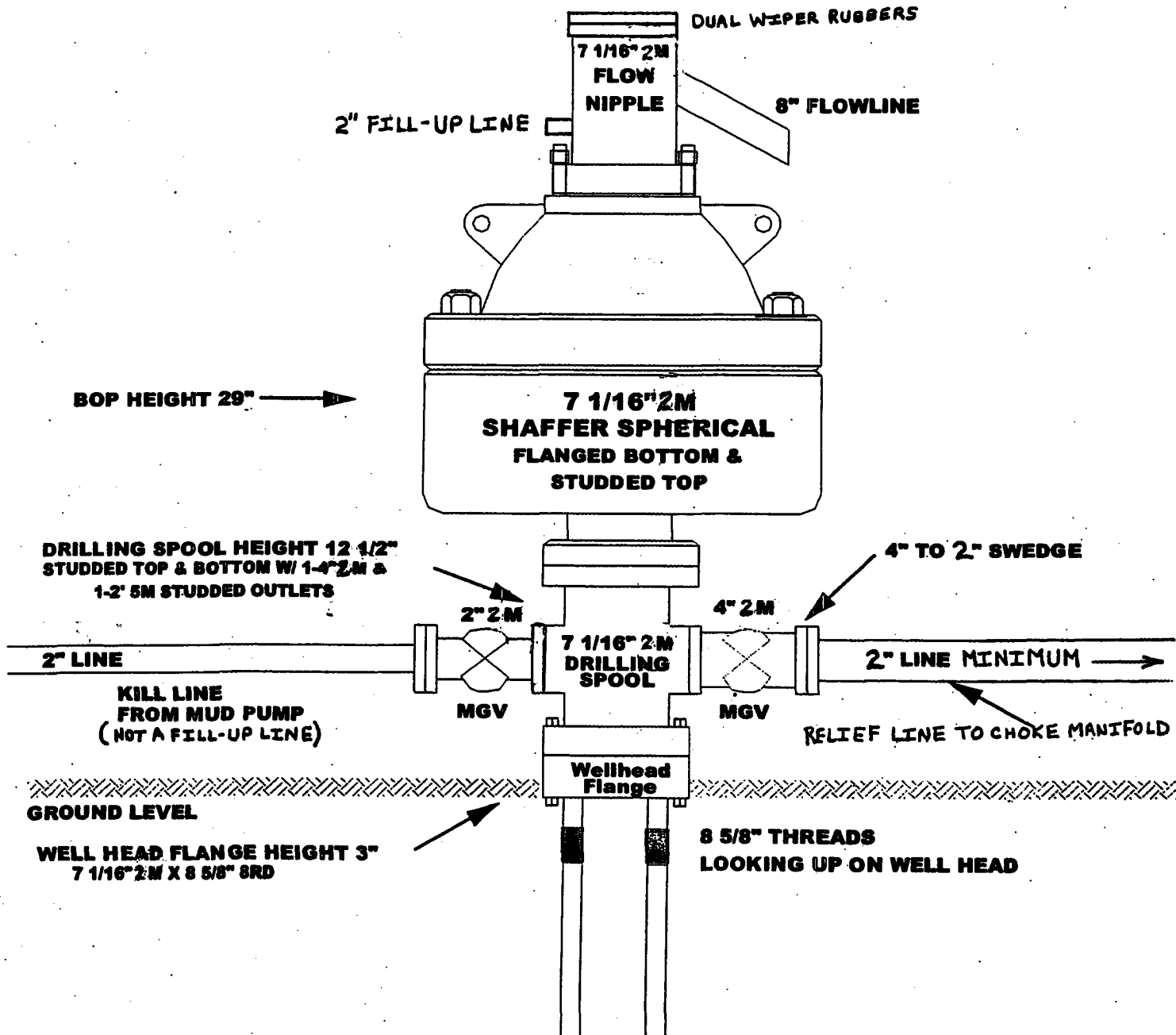
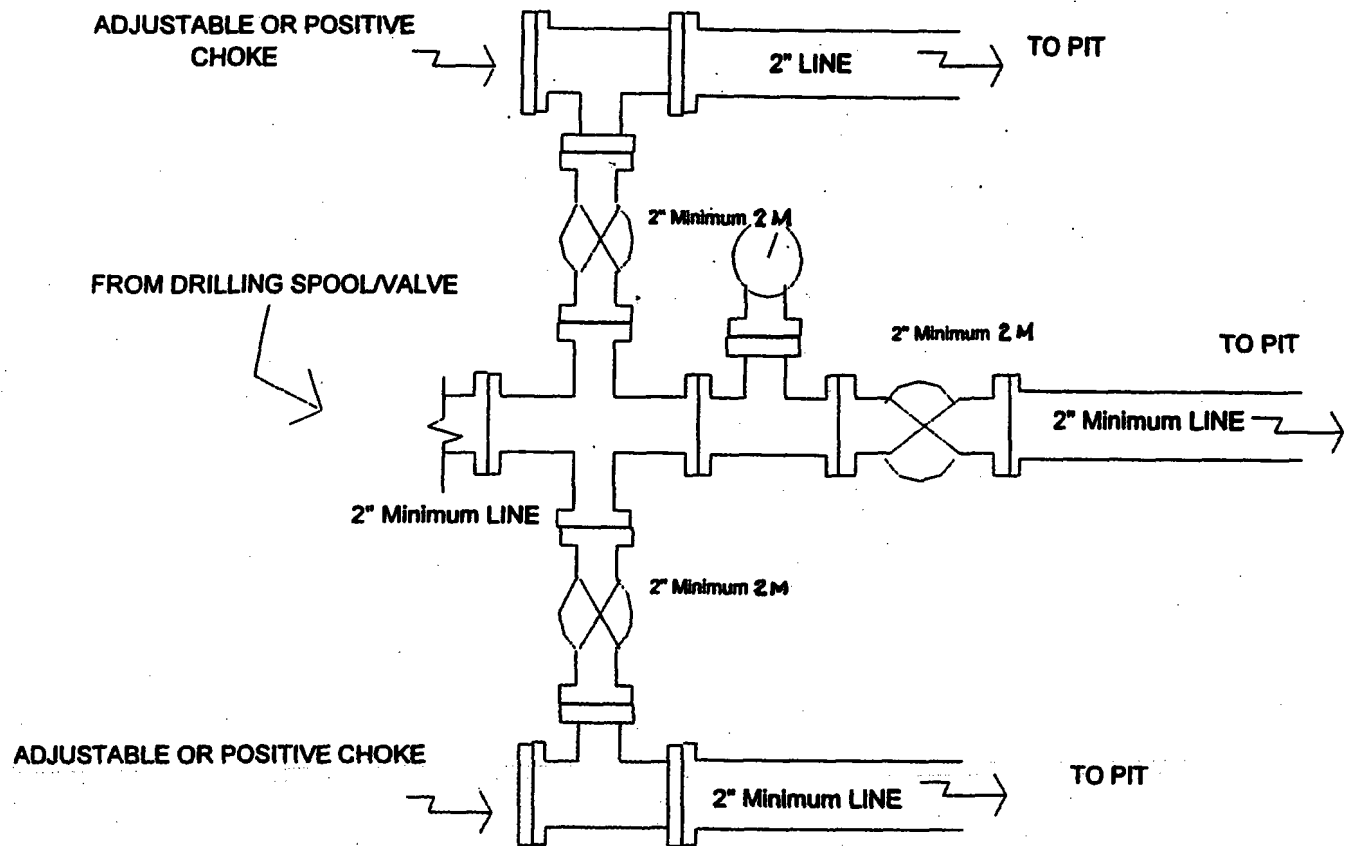


FIGURE 1

BURLINGTON RESOURCES

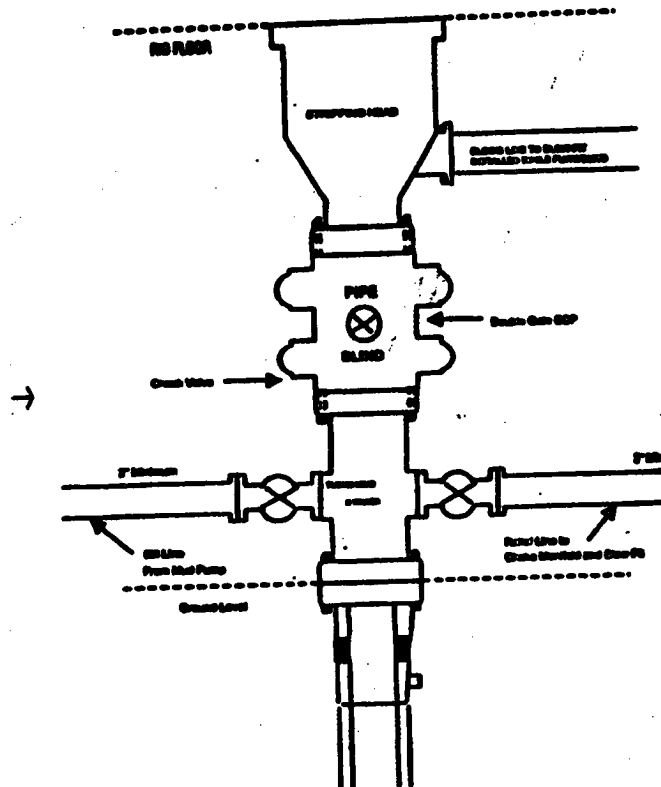
Drilling Rig Choke Manifold Configuration 2000 psi System



Choke manifold installation from Surface Casing
Point to Total Depth. 2,000 psi working pressure
equipment with two chokes.

BURLINGTON RESOURCES

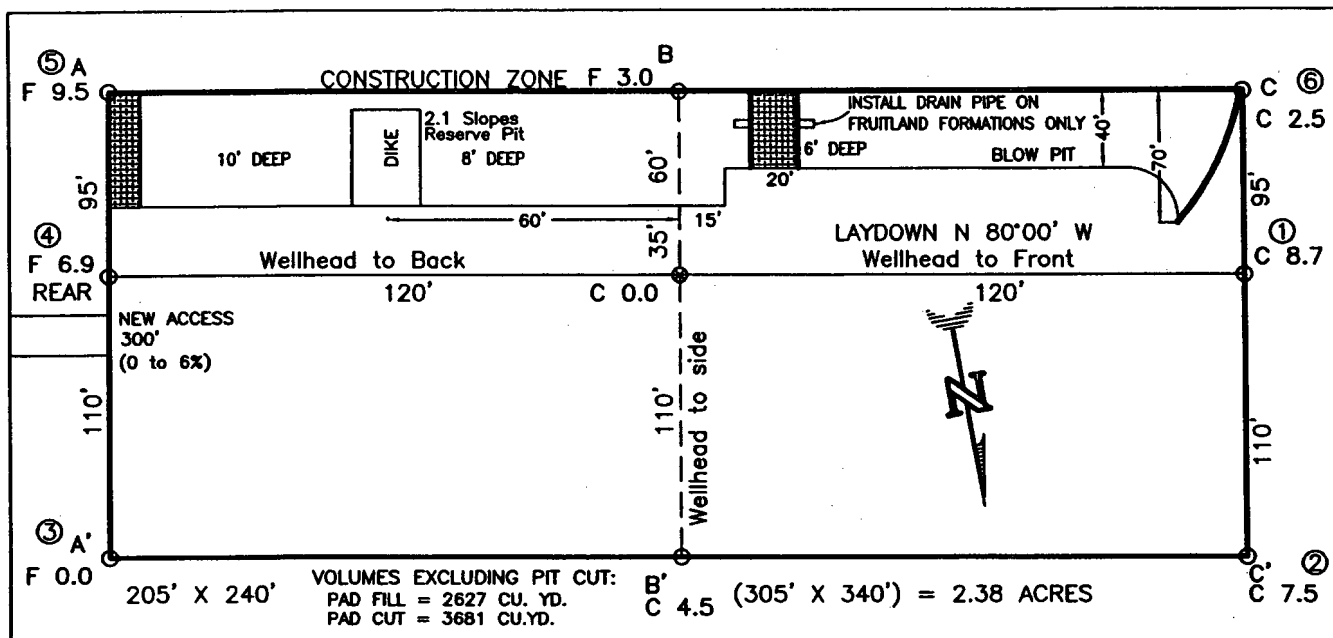
Completion/Workover Rig BOP Configuration 2,000 psi System



Minimum BOP installation for all Completion/Workover Operations. 7-1/16" bore, 2000 psi minimum working pressure double gate BOP to be equipped with blind and pipe rams. A stripping head to be installed on the top of the BOP. All BOP equipment is 2000 psi working pressure or greater excluding 600 psi stripping head.

Figure #2

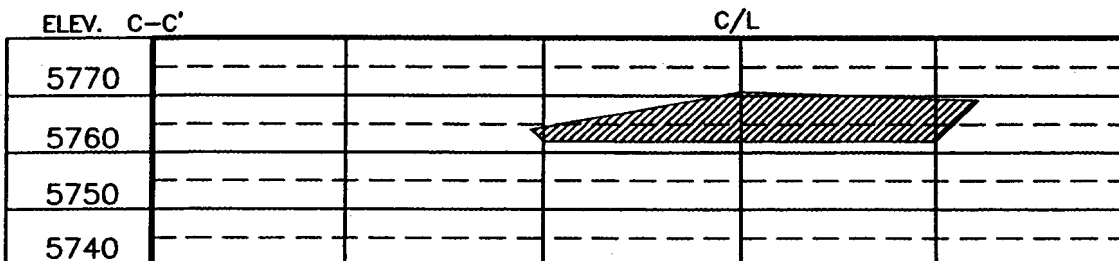
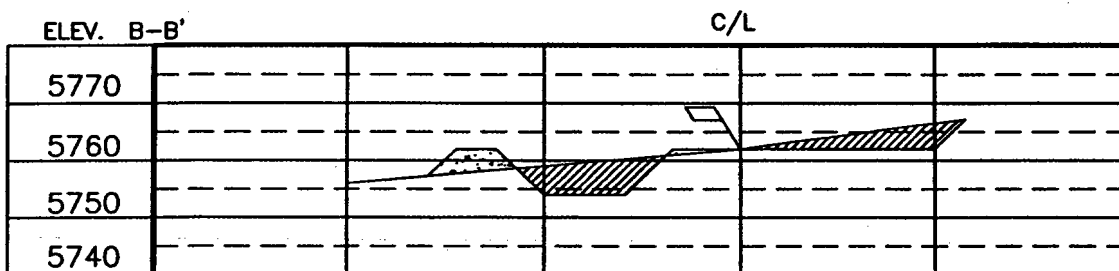
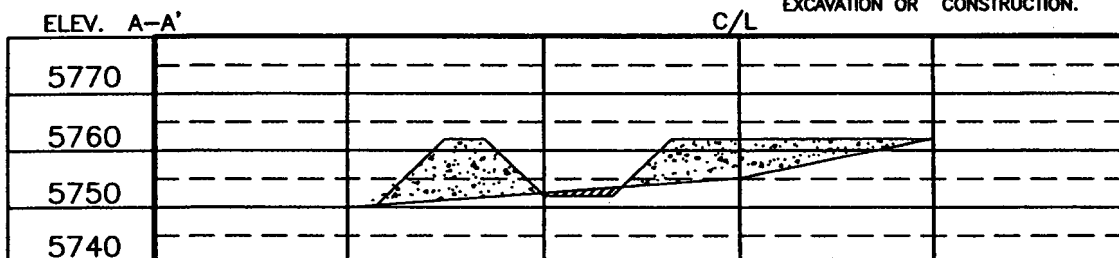
BURLINGTON RESOURCES OIL & GAS COMPANY LP
COOPER No. 8R, 1570 FNL 660 FWL
SECTION 7, T-29-N, R-11-W, N.M.P.M., SAN JUAN COUNTY, NEW MEXICO
GROUND ELEVATION: 5762, DATE: SEPTEMBER 30, 2003



RESERVE PIT DIKE: TO BE 8' ABOVE DEEP SIDE (OVERFLOW - 3' WIDE AND 1' ABOVE SHALLOW SIDE).
 BLOW PIT: OVERFLOW PIPE HALFWAY BETWEEN TOP AND BOTTOM AND TO EXTEND OVER PLASTIC LINER AND INTO BLOW PIT.

NOTE:

DAGGETT ENTERPRISES, INC. IS NOT LIABLE FOR UNDERGROUND UTILITIES OR PIPELINES. NEW MEXICO ONE CALL TO BE NOTIFIED 48 HOURS PRIOR TO EXCAVATION OR CONSTRUCTION.



NOTE: CONTRACTOR SHOULD CALL ONE-CALL FOR LOCATION OF ANY MARKED OR UNMARKED BURIED PIPELINES OR CABLES ON WELL PAD AND OR ACCESS ROAD AT LEAST TWO (2) WORKING DAYS PRIOR TO CONSTRUCTION.

DRAWN BY: A.G. ROW#: BR484 CADFILE: BR484CF8 DATE: 10/15/03

Daggett Enterprises, Inc.

Surveying and Oil Field Services

P. O. Box 15068 Farmington, NM 87401
 Phone (505) 326-1772 Fax (505) 326-6019