

UNITED STATES
DEPARTMENT OF THE INTERIOR
BUREAU OF LAND MANAGEMENT

RECEIVED

APPLICATION FOR PERMIT TO DRILL, DEEPEN, OR PLUG BACK

2004 FEB 25 AM 11: 57

| | | |
|---|--|-----------------|
| 1a. Type of Work DRILL | 5. Lease Number SF-079394 Unit Reporting Number MV-8910010510 DK-891001051B | |
| 1b. Type of Well GAS | 6. If Indian, All. or Tribe | |
| 2. Operator BURLINGTON RESOURCES Oil & Gas Company | 7. Unit Agreement Name San Juan 27-5 Unit | |
| 3. Address & Phone No. of Operator PO Box 4289, Farmington, NM 87499 (505) 326-9700 | 8. Farm or Lease Name San Juan 27-5 Unit 9. Well Number #121N | |
| 4. Location of Well 2420' FSL, 360' FWL Latitude 36° 32.6925'N, Longitude 107° 22.2728'W | 10. Field, Pool, Wildcat Blanco Mesaverde/Basin Dakota 11. Sec., Twn, Rge, Mer. (NMPM) L Sec. 28, T27N, R05W API # 30-039- 27639 | |
| 14. Distance in Miles from Nearest Town 40 miles to Blanco Post Office | 12. County Rio Arriba | 13. State NM |
| 15. Distance from Proposed Location to Nearest Property or Lease Line 360' | 17. Acres Assigned to Well 295.73 W/2 - MV 295.73 W/2 - DK | |
| 16. Acres in Lease | | |
| 18. Distance from Proposed Location to Nearest Well, Drlg, Compl, or Applied for on this Lease 1732' | | |
| 19. Proposed Depth 7610' | 20. Rotary or Cable Tools Rotary | |
| 21. Elevations (DF, FT, GR, Etc.) 6428' GR | 22. Approx. Date Work will Start | |
| 23. Proposed Casing and Cementing Program See Operations Plan attached | | |
| 24. Authorized by: <u>Joni Clark</u> Regulatory Specialist | <u>2/24/04</u> Date | |

PERMIT NO.

APPROVAL DATE

APPROVED BY [Signature]

TITLE

DATE

Archaeological Report attached

Threatened and Endangered Species Report attached

NOTE: This format is issued in lieu of U.S. BLM Form 3160-3

Title 18 U.S.C. Section 1001, makes it a crime for any person knowingly and willfully to make to any department or agency of the United States any false, fictitious or fraudulent statements or presentations as to any matter within its jurisdiction.

DISTRICT I
1625 N. French Dr., Hobbs, N.M. 88240

DISTRICT II
811 South First, Artesia, N.M. 88210

DISTRICT III
1000 Rio Brazos Rd., Aztec, N.M. 87410

DISTRICT IV
2040 South Pacheco, Santa Fe, NM 87505

State of New Mexico
Energy, Minerals & Natural Resources Department

Form C-102
Revised August 15, 2000

Submit to Appropriate District Office
State Lease - 4 Copies
Fee Lease - 3 Copies

OIL CONSERVATION DIVISION

2040 South Pacheco
Santa Fe, NM 87505

☐ AMENDED REPORT

WELL LOCATION AND ACREAGE DEDICATION PLAT

| | | | |
|-----------------------------|---|---------------------------|---|
| *API Number 30-039-27639 | | *Pool Code 71599/72319 | *Pool Name Basin Dakota/Blanco Mesaverde |
| *Property Code 7454 | *Property Name SAN JUAN 27-5 UNIT | | *Well Number 121 0 N |
| *GRID No. 14538 | *Operator Name BURLINGTON RESOURCES OIL AND GAS COMPANY LP | | *Elevation 6428' |

¹⁰ Surface Location

| UL or lot no. | Section | Township | Range | Lot Idn | Feet from the | North/South line | Feet from the | East/West line | County |
|---------------|---------|----------|-------|---------|---------------|------------------|---------------|----------------|------------|
| L | 28 | 27-N | 5-W | | 2420' | SOUTH | 360' | WEST | RIO ARriba |

¹¹ Bottom Hole Location If Different From Surface

| UL or lot no. | Section | Township | Range | Lot Idn | Feet from the | North/South line | Feet from the | East/West line | County |
|---|---------|----------|-------|---------|-------------------------------|------------------|----------------------------------|----------------|-------------------------|
| ¹² Dedicated Acres MV W/295.73 DK W/295.73 | | | | | ¹³ Joint or Infill | | ¹⁴ Consolidation Code | | ¹⁵ Order No. |

NO ALLOWABLE WILL BE ASSIGNED TO THIS COMPLETION UNTIL ALL INTERESTS HAVE BEEN CONSOLIDATED
OR A NON-STANDARD UNIT HAS BEEN APPROVED BY THE DIVISION

| | | | |
|--|-------|-------|-------|
| LOT 4 | LOT 3 | LOT 2 | LOT 1 |
| USA SF-079392 | | | |
| LOT 5 | LOT 6 | LOT 7 | LOT 8 |
| USA SF-079394 | | | |
| LAT: 36°32.6925' N, LONG: 107°22.2728' W. NAD 1927 | | | |
| N 00-08-49 W 2655.71' | | | |
| 2420' | | | |
| S 89-27-27 E 2654.61' | | | |

RECEIVED
2004 FEB 25 AM 11:57
070 Farmington, NM

17 OPERATOR CERTIFICATION

I hereby certify that the information contained herein
is true and complete to the best of my knowledge and
belief

Ioni Clark
Signature
Ioni Clark
Printed Name
Regulatory Specialist
Title
2/24/04
Date

18 SURVEYOR CERTIFICATION

I hereby certify that the well location shown on this plat
was plotted from field notes of actual surveys made by
me or under my supervision, and that the same is true
and correct to the best of my belief.

Date of Survey
Signature and Seal of Professional Surveyor
GLENN W. RUSSELL
15703
LICENSED PROFESSIONAL SURVEYOR
Certificate Number 15703

OPERATIONS PLAN

Well Name: San Juan 27-5 Unit #121N
Location: 2420' FSL, 360' FWL, Sec 28, T-27-N, R-5-W
Rio Arriba County, NM
Latitude 36° 32.6925'N, Longitude 107° 22.2728'W
Formation: Blanco Mesaverde/Basin Dakota

Total Depth: 7610'

Logging Program: See San Juan 27-5 Unit Master Operations Plan

Mud Program: See San Juan 27-5 Unit Master Operations Plan

Casing Program (as listed, the equivalent, or better):

| Hole Size | Depth Interval | Csg. Size | Wt. | Grade | Cement |
|-----------|----------------|-----------|-------|-------|------------|
| 12 1/4" | 0' - 200' | 9 5/8" | 32.3# | H-40 | 188 cu.ft. |
| 8 3/4" | 0' - 3365' | 7" | 20.0# | J-55 | 748 cu.ft. |
| 6 1/4" | 0' - 7610' | 4 1/2" | 10.5# | J-55 | 578 cu.ft. |

Tubing Program: See San Juan 27-5 Unit Master Operations Plan

- The Mesaverde and Dakota formations will be completed and commingled.
- The west half of Section 28 is dedicated to the Mesaverde and to the Dakota formations in this well.
- Gas is dedicated.

Sean Corrigan
Drilling Engineer

February 24, 2004
Date

MULTI-POINT SURFACE USE PLAN

San Juan 27-5 Unit #121N

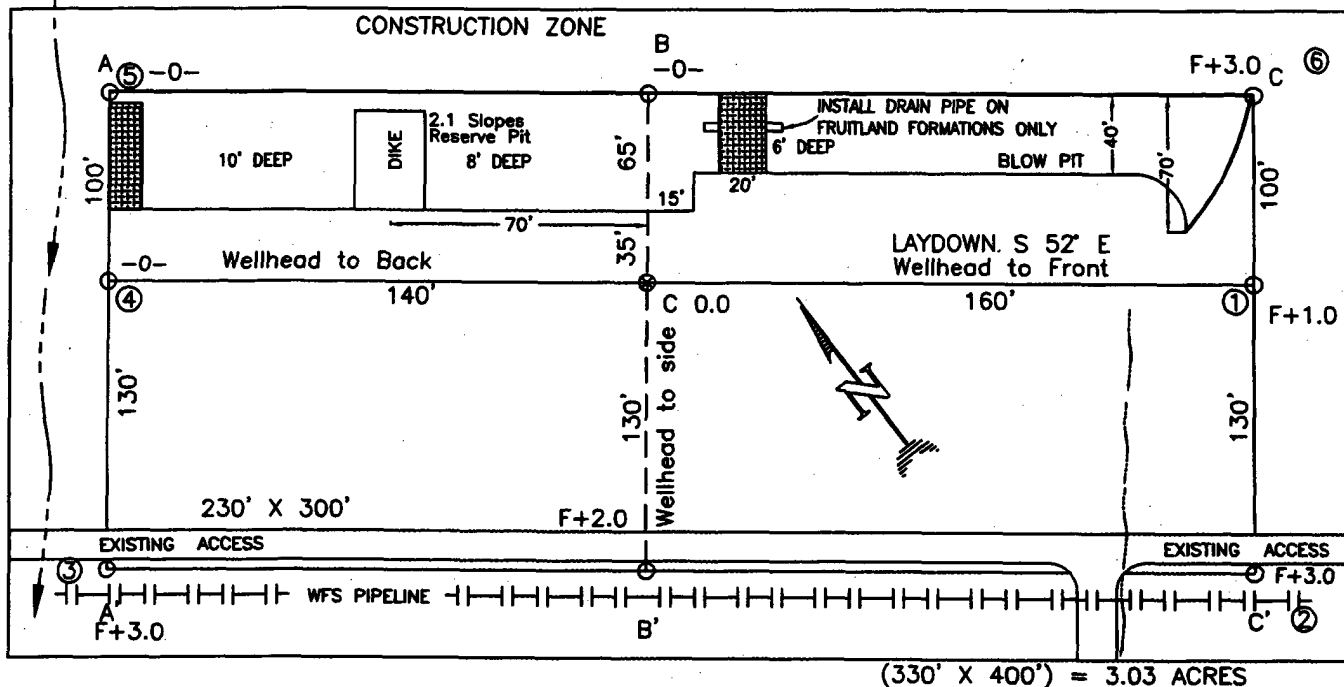
See San Juan 27-5 Unit Master Multi-point Surface Use Plan

- Anticipated pipeline facilities as shown on the attached plat from Williams Field Services.
- No new road will be built.
- Water supply from the Candelaria Water Hole located SE/4 Section 29, T-27-N, R-5-W, New Mexico.
- Surface Ownership: Pat Montoya
- Fee surface stips to BLM.
- Archaeological Resources: See Archaeological Survey technical report #2003-SJC-276 from San Juan College.

Joni Clark
Regulatory Specialist

2/24/04
Date

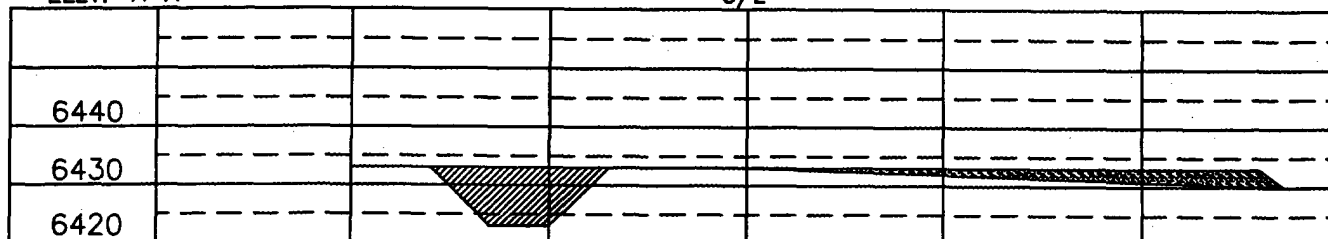
BURLINGTON RESOURCES OIL & GAS COMPANY LP
SAN JUAN 27-5 UNIT #121 O, 2420' FSL & 360' FWL
SECTION 28, T-27-N, R-5-W, NMPM, RIO ARriba COUNTY, NM
GROUND ELEVATION: 6433', DATE: NOVEMBER 17, 2003



RESERVE PIT DIKE: TO BE 8' ABOVE DEEP SIDE (OVERFLOW - 3' WIDE AND 1' ABOVE SHALLOW SIDE).
 BLOW PIT: OVERFLOW PIPE HALFWAY BETWEEN TOP AND BOTTOM AND TO EXTEND OVER PLASTIC LINER AND INTO BLOW PIT.

ELEV. A-A'

C/L

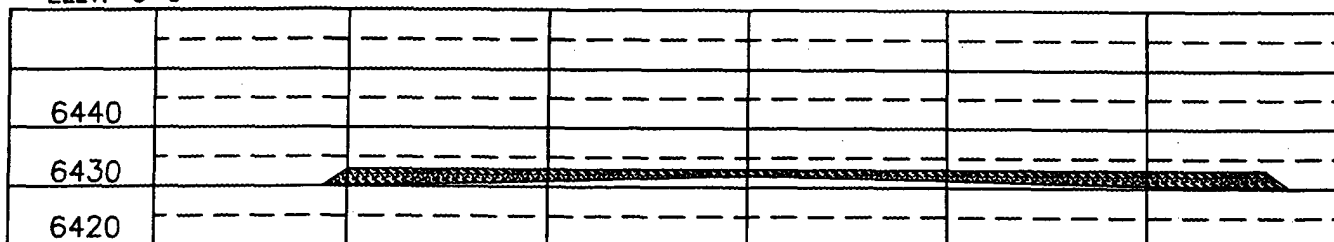


ELEV. B-B'

C/L



ELEV. C-C'



NOTE: VECTOR SURVEYS IS NOT LIABLE FOR UNDERGROUND UTILITIES OR PIPELINES.
 CONTRACTOR SHOULD CALL ONE-CALL FOR LOCATION OF ANY MARKED OR UNMARKED BURIED PIPELINES OR CABLES
 ON WELL PAD AND OR ACCESS ROAD AT LEAST TWO (2) WORKING DAYS PRIOR TO CONSTRUCTION.