

UNITED STATES  
DEPARTMENT OF THE INTERIOR  
BUREAU OF LAND MANAGEMENT

APPLICATION FOR PERMIT TO DRILL, DEEPEN, OR PLUG BACK

RECEIVED

1a. Type of Work DRILL	5. Lease Number SF-079394
	Unit Reporting Number MV-8910010510 DK-891001051B
1b. Type of Well GAS	6. If Indian, All. or Tribe
2. Operator <b>BURLINGTON</b> RESOURCES Oil & Gas Company	7. Unit Agreement Name San Juan 27-5 Unit
3. Address & Phone No. of Operator PO Box 4289, Farmington, NM 87499  (505) 326-9700	8. Farm or Lease Name San Juan 27-5 Unit
	9. Well Number #125N
4. Location of Well 525' FSL, 185' FWL  Latitude 36° 33.1834'N, Longitude 107° 22.2845'W	10. Field, Pool, Wildcat Blanco Mesaverde/Basin Dakota
	11. Sec., Twn, Rge, Mer. (NMPM) Sec. 21, T27N, R05W API # 30-039- 27690
14. Distance in Miles from Nearest Town 39.7 miles to Blanco Post Office	12. County Rio Arriba
	13. State NM
15. Distance from Proposed Location to Nearest Property or Lease Line 185'	
16. Acres in Lease	17. Acres Assigned to Well 320 W/2 - MV 320 S/2 - DK
18. Distance from Proposed Location to Nearest Well, Drlg, Compl, or Applied for on this Lease 1473'	
19. Proposed Depth 7727'	20. Rotary or Cable Tools Rotary
21. Elevations (DF, FT, GR, Etc.) 6511' GR	22. Approx. Date Work will Start
23. Proposed Casing and Cementing Program See Operations Plan attached	
24. Authorized by: <u>Joan Clark</u> Regulatory Specialist	<u>3-3-04</u> Date

PERMIT NO. \_\_\_\_\_ APPROVAL DATE \_\_\_\_\_  
APPROVED BY David J. Mankiewicz TITLE \_\_\_\_\_ DATE MAY 13 2004

Archaeological Report attached

Threatened and Endangered Species Report attached

NOTE: This format is issued in lieu of U.S. BLM Form 3160-3

Title 18 U.S.C. Section 1001, makes it a crime for any person knowingly and willfully to make to any department or agency of the United States any false, fictitious or fraudulent statements or presentations as to any matter within its jurisdiction.

This action is subject to technical and  
procedural review pursuant to 43 CFR 3165.3  
and appeal pursuant to 43 CFR 3165.4

NMOC

LANDING OPERATIONS AUTHORIZED ARE  
SUBJECT TO COMPLIANCE WITH ATTACHED  
"GENERAL REQUIREMENTS".

DISTRICT I  
1625 N. French Dr., Hobbs, N.M. 88240

DISTRICT II  
811 South First, Artesia, N.M. 88210

DISTRICT III  
1000 Rio Brazos Rd., Aztec, N.M. 87410

DISTRICT IV  
2040 South Pacheco, Santa Fe, NM 87505

State of New Mexico  
Energy, Minerals & Natural Resources Department

Form C-102  
Revised August 15, 2000

OIL CONSERVATION DIVISION

2040 South Pacheco  
Santa Fe, NM 87505

Submit to Appropriate District Office  
State Lease - 4 Copies  
Fee Lease - 3 Copies

☐ AMENDED REPORT

WELL LOCATION AND ACREAGE DEDICATION PLAT

*API Number 30-039- <b>27690</b>	*Pool Code 71599/72319	*Pool Name Basin Dakota/Blanco Mesaverde
*Property Code 7454	*Property Name SAN JUAN 27-5 UNIT	*Well Number 125N
*OGRID No. 14538	*Operator Name BURLINGTON RESOURCES OIL AND GAS COMPANY LP	*Elevation 6511'

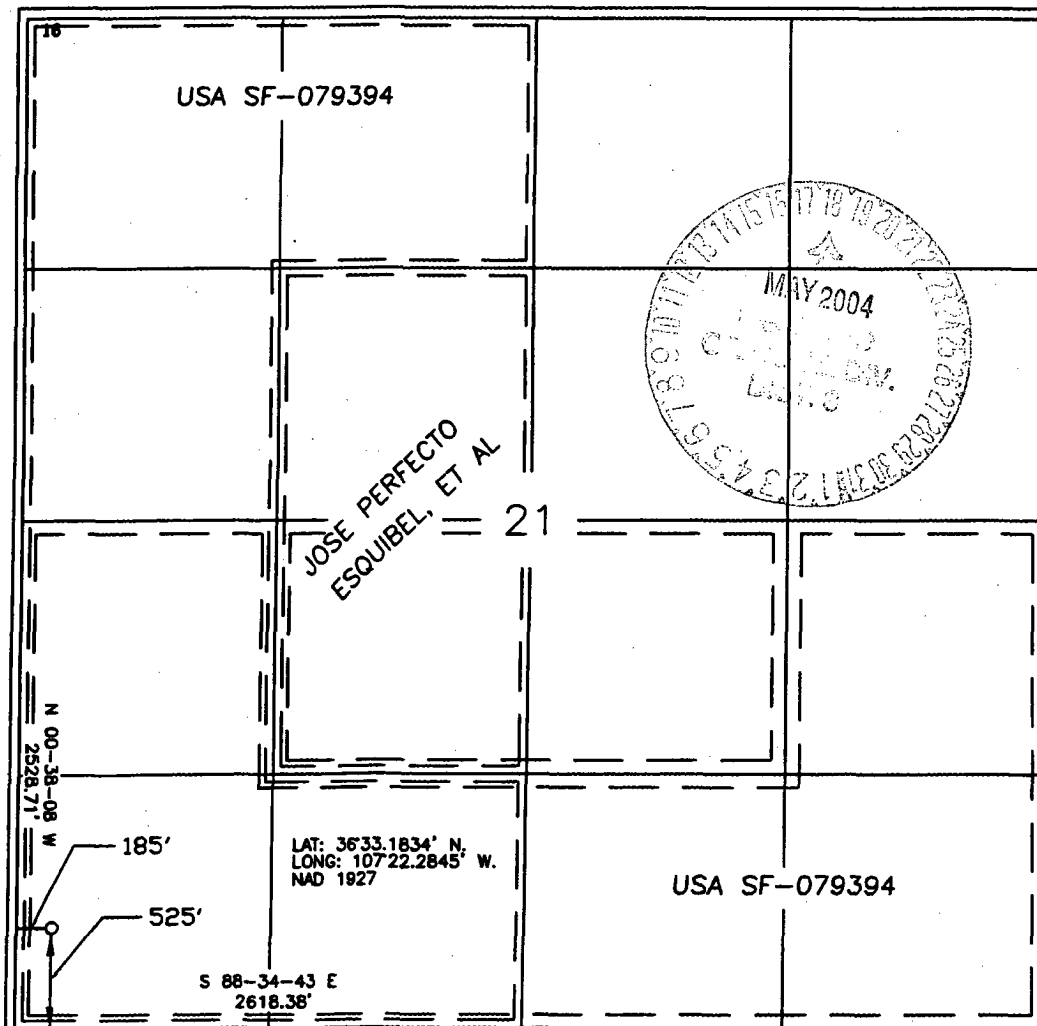
<sup>10</sup> Surface Location

UL or lot no.	Section	Township	Range	Lot Idn	Feet from the	North/South line	Feet from the	East/West line	County
M	21	27-N	5-W		525'	SOUTH	185'	WEST	RIO ARRIBA

<sup>11</sup> Bottom Hole Location If Different From Surface

UL or lot no.	Section	Township	Range	Lot Idn	Feet from the	North/South line	Feet from the	East/West line	County
Dedicated Acres DK S/320 MV W/320					Joint or Infill		Consolidation Code		Order No.

NO ALLOWABLE WILL BE ASSIGNED TO THIS COMPLETION UNTIL ALL INTERESTS HAVE BEEN CONSOLIDATED  
OR A NON-STANDARD UNIT HAS BEEN APPROVED BY THE DIVISION



<sup>17</sup> OPERATOR CERTIFICATION

I hereby certify that the information contained herein is true and complete to the best of my knowledge and belief.

Signature: Joni Clark  
Printed Name: Joni Clark  
Title: Regulatory Specialist  
Date: 2-3-04

<sup>18</sup> SURVEYOR CERTIFICATION

I hereby certify that the well location shown on this plat was plotted from field notes of actual surveys made by me or under my supervision, and that the same is true and correct to the best of my belief.

Date of Survey: 12-8-03  
Signature and Seal of Professional Surveyor: Carl Russell  
Certificate Number: 15703

## OPERATIONS PLAN

Well Name: San Juan 27-5 Unit #125N  
Location: 525' FSL, 185' FWL, Sec 21, T-27-N, R-5-W  
Rio Arriba County, NM  
Latitude 36° 33.1834'N, Longitude 107° 22.2845'W  
Formation: Blanco Mesaverde/Basin Dakota

Total Depth: 7727'

Logging Program: See San Juan 27-5 Unit Master Operations Plan

Mud Program: See San Juan 27-5 Unit Master Operations Plan

Casing Program (as listed, the equivalent, or better):

<u>Hole Size</u>	<u>Depth Interval</u>	<u>Csg. Size</u>	<u>Wt.</u>	<u>Grade</u>	<u>Cement</u>
12 1/4"	0' - 120'	9 5/8"	32.3#	H-40	113 cu.ft.
8 3/4"	0' - 3478'	7"	20.0#	J-55	778 cu.ft.
6 1/4"	0' - 7727'	4 1/2"	10.5#	J-55	578 cu.ft.

Tubing Program: See San Juan 27-5 Unit Master Operations Plan

- The Mesaverde and Dakota formations will be completed and commingled.
- The west half of Section 21 is dedicated to the Mesaverde and the south half of the Dakota formation in this well.
- Gas is dedicated.

Jean Corrigan  
Drilling Engineer

March 9, 2004  
Date

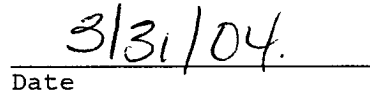
**MULTI-POINT SURFACE USE PLAN**

**San Juan 27-5 Unit #125N**

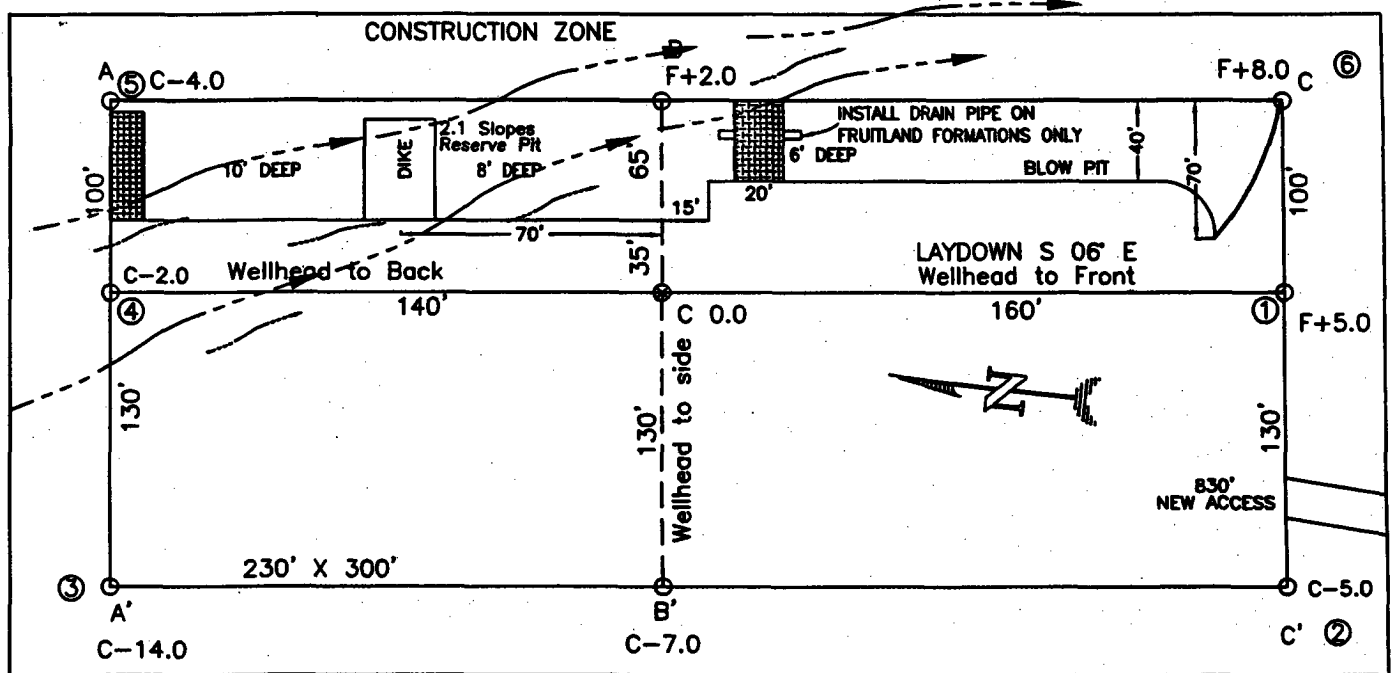
**See San Juan 27-5 Unit Master Multi-point Surface Use Plan**

- Anticipated pipeline facilities as shown on the attached plat from Williams Field Services.
- 830f new road will be built. 480' BLM surface and 350' fee surface.
- Water supply from the Candelaria Water Hole located SE/4 Section 29, T-27-N, R-5-W, New Mexico.
- Surface Ownership: Pat Montoya
- Pipeline south of existing road not on new access and will require ROW permitted approximately 480'.
- Need arch and fee surface strips to BLM.
- Archaeological Resources: See Archaeological Survey technical report #2003-SJC-277 from San Juan College.

  
Regulatory Specialist

  
Date

**BURLINGTON RESOURCES OIL & GAS COMPANY LP**  
**SAN JUAN 27-5 UNIT #125N, 525 FSL & 185' FWL**  
**SECTION 21, T-27-N, R-5-W, NMPM, RIO ARriba COUNTY, NM**  
**GROUND ELEVATION: 6511', DATE: NOVEMBER 17, 2003**

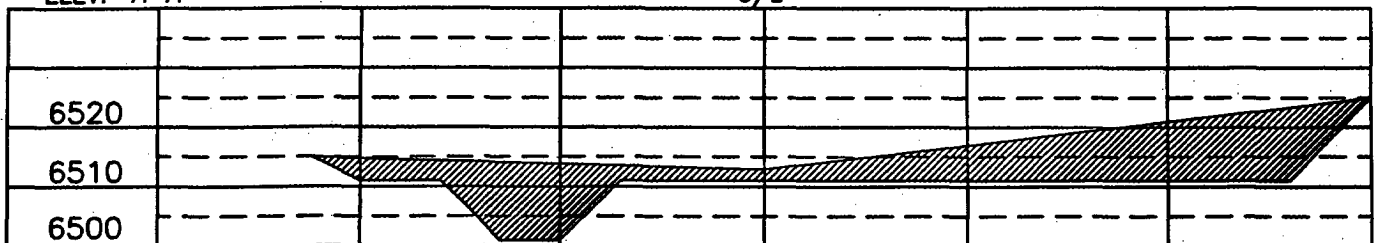


(330' X 400') = 3.03 ACRES

RESERVE PIT DIKE: TO BE 8' ABOVE DEEP SIDE (OVERFLOW - 3' WIDE AND 1' ABOVE SHALLOW SIDE).  
 BLOW PIT: OVERFLOW PIPE HALFWAY BETWEEN TOP AND BOTTOM AND TO EXTEND OVER PLASTIC LINER AND INTO BLOW PIT.

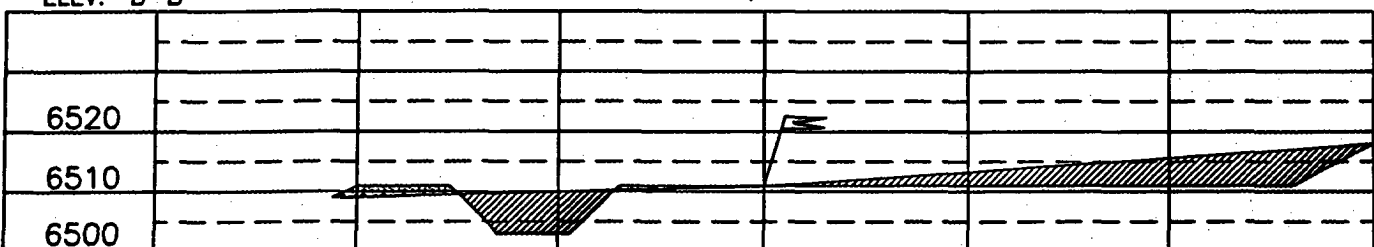
ELEV. A-A'

C/L

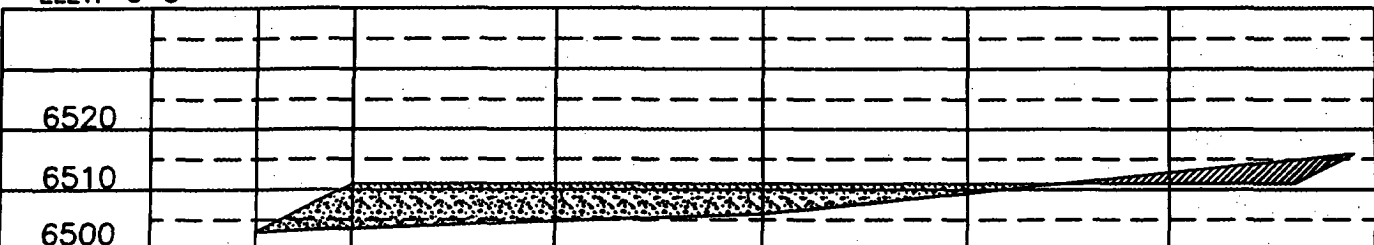


ELEV. B-B'

C/L



ELEV. C-C'



NOTE: VECTOR SURVEYS IS NOT LIABLE FOR UNDERGROUND UTILITIES OR PIPELINES.  
 CONTRACTOR SHOULD CALL ONE-CALL FOR LOCATION OF ANY MARKED OR UNMARKED BURIED PIPELINES OR CABLES  
 ON WELL PAD AND OR ACCESS ROAD AT LEAST TWO (2) WORKING DAYS PRIOR TO CONSTRUCTION.