

District I

1625 N. French Dr., Hobbs, NM 88240

District II

1301 W. Grand Avenue, Artesia, NM 88210

District III

1000 Rio Brazos Road, Aztec, NM 87410

District IV

1220 S. St. Francis Dr., Santa Fe, NM 87505

State of New Mexico
Energy Minerals and Natural Resources

Oil Conservation Division

1220 South St. Francis Dr.
Santa Fe, NM 87505

Form C-101

March 4, 2004

Submit to appropriate District Office

State Lease - 6 Copies

Fee Lease - 5 Copies

☐ AMENDED REPORT

APPLICATION FOR PERMIT TO DRILL, RE-ENTER, DEEPEN, PLUGBACK, OR ADD A ZONE

Operator Name and Address HEC PETROLEUM, INC. c/o Mike Pippin 3104 N. Sullivan Farmington, NM 87401		2 OGRID Number 009812
3 Property Code 15505	5 Property Name QUINOCO STATE N	4 API Number 30 - 045-32343
		6 Well No. 5

7 Surface Location

UL or lot no.	Section	Township	Range	Lot Idn	Feet from the	North/South line	Feet from the	East/West line	County
P	2	31N	7W		760	SOUTH	685	EAST	SAN JUAN

8 Proposed Bottom Hole Location If Different From Surface

UL or lot no.	Section	Township	Range	Lot Idn	Feet from the	North/South line	Feet from the	East/West line	County
---------------	---------	----------	-------	---------	---------------	------------------	---------------	----------------	--------

9 Proposed Pool 1 BASIN FRUITLAND COAL	10 Proposed Pool 2
---	--------------------

Drilling Pit Location and Other Information

UL or lot no.	Section	Township	Range	Lot Idn	Feet from the	North/South line	Feet from the	East/West line	County
P	2	31N	7W		810	SOUTH	685	EAST	SAN JUAN
Depth to ground water > 100'				Distance from nearest fresh water well > 1000'			Distance from nearest surface water > 1000'		
11 Work Type Code N		12 Well Type Code G		13 Cable/Rotary R		14 Lease Type Code S		15 Ground Level Elevation 6513'	
16 Multiple NO		17 Proposed Depth 3500'		18 Formation Basin Fruitland Coal		19 Contractor None Yet		20 Spud Date 9/1/04	

21 Proposed Casing and Cement Program

Hole Size	Casing Size	Casing weight/foot	Setting Depth	Sacks of Cement	Estimated TOC
8.75"	7"	20#	200'	55	Surface
6.25"	4.5"	11.6#	3500'	404	Surface

22 Describe the proposed program. If this application is to DEEPEN or PLUG BACK, give the data on the present productive zone and proposed new productive zone. Describe the blowout prevention program, if any. Use additional sheets if necessary. Drill 8-3/4" hole to 200' using fresh water mud. Run & cement 7" surface casing to surface. WOC 12 hours. Nipple up 7-1/16" 3000# BOPE (annular). Pressure test surface casing & BOPE to minimum of 600 psig for 15 minutes. Drill 6-1/4" hole to TD using polymer and water. Log well. Run 4-1/2" production casing and cement to surface in a single stage. Move out drilling rig. Move in completion equipment. Run cased hole correlation log. Test production casing to 3800 psig for 15 minutes. Perforate select Fruitland Coal intervals and stimulate with a sand frac treatment. Install production equipment, 2-3/8" tubing, and gas sales meter. Complete as a single Fruitland Coal well. The pit liner will meet OCD guidelines.

23 I hereby certify that the information given above is true and complete to the best of my knowledge and belief. I further certify that the drilling pit will be constructed according to NMOCD guidelines ☒, a general permit ☐, or an (attached) alternative OCD-approved plan ☐.

Signature:

Mike Pippin

Printed name: Mike Pippin

Title: Agent - Petroleum Engineer

E-mail Address: mpippin@ddbroadband.net

Date: 5/13/04

Phone: 505-327-4573

OIL CONSERVATION DIVISION

Approved by:

[Signature]

Title:

DEPUTY OIL & GAS INSPECTOR, DIST. IV

Approval Date:

MAY 13 2004

Expiration Date:

MAY 13 2005

Conditions of Approval:

Attached ☐

District I
PO Box 1980, Hobbs, NM 88241-1980

State of New Mexico
Energy, Minerals & Natural Resources Department

Form C-102
Revised February 21, 1994

District II
PO Drawer DD, Artesia, NM 88211-0719

OIL CONSERVATION DIVISION

Instructions on back
Submit to Appropriate District Office
State Lease - 4 Copies
Fee Lease - 3 Copies

District III
1000 Rio Brazos Rd., Aztec, NM 87410

PO Box 2088

Santa Fe, NM 87504-2088

District IV
PO Box 2088, Santa Fe, NM 87504-2088

☐ AMENDED REPORT

WELL LOCATION AND ACREAGE DEDICATION PLAT

*API Number 30-045-3234B		*Pool Code 71629	*Pool Name BASIN FRUITLAND COAL
*Property Code 15505	*Property Name QUINOCO STATE N		*Well Number 5
*GRID No. 9812	*Operator Name HEC PETROLUEM, INC.		*Elevation 6513'

¹⁰ Surface Location

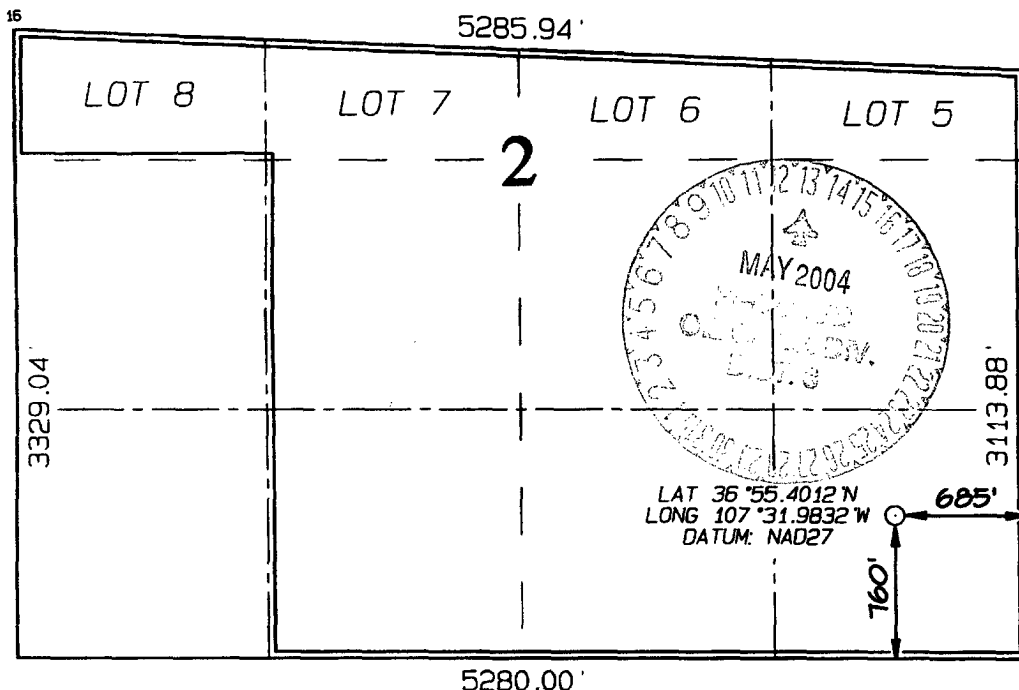
UL or lot no.	Section	Township	Range	Lot Idn	Feet from the	North/South line	Feet from the	East/West line	County
P	2	31N	7W		760	SOUTH	685	EAST	SAN JUAN

¹¹ Bottom Hole Location If Different From Surface

UL or lot no.	Section	Township	Range	Lot Idn	Feet from the	North/South line	Feet from the	East/West line	County

¹² Dedicated Acres 310.48 Acres	¹³ Joint or Infill	¹⁴ Consolidation Code	¹⁵ Order No. R-9061
---	-------------------------------	----------------------------------	-----------------------------------

NO ALLOWABLE WILL BE ASSIGNED TO THIS COMPLETION UNTIL ALL INTERESTS HAVE BEEN CONSOLIDATED
OR A NON-STANDARD UNIT HAS BEEN APPROVED BY THE DIVISION



¹⁷ OPERATOR CERTIFICATION

I hereby certify that the information
contained herein is true and complete
to the best of my knowledge and belief

Signature
Mike Pippin

Printed Name
MIKE PIPPIN

Title
AGENT-PETR. ENGR.

Date
5-13-04

Date

¹⁸ SURVEYOR CERTIFICATION

I hereby certify that the well location
shown on this plat was plotted from field
notes of actual surveys made by me or under
my supervision, and that the same is true
and correct to the best of my belief.

Date of Survey: APRIL 19, 2004

Signature and Seal of Professional Surveyor



JASON C. EDWARDS
Certificate Number 15269