

UNITED STATES
DEPARTMENT OF THE INTERIOR
BUREAU OF LAND MANAGEMENT

APPLICATION FOR PERMIT TO DRILL, DEEPEN, OR PLUG BACK

1a. Type of Work DRILL	5. Lease Number NMSF-079002 Unit Reporting Number
1b. Type of Well GAS	6. If Indian, All. or Tribe
2. Operator BURLINGTON RESOURCES Oil & Gas Company	7. Unit Agreement Name San Juan 30-6 Unit
3. Address & Phone No. of Operator PO Box 4289, Farmington, NM 87499 (505) 326-9700	8. Farm or Lease Name San Juan 30-6 Unit 9. Well Number #452S
4. Location of Well 2485' FNL, 670' FWL Latitude 36° 49.6492'N, Longitude 107° 29.5400'W	10. Field, Pool, Wildcat Basin Fruitland Coal 11. Sec., Twn, Rge, Mer. (NMPM) Sec. 8, T30N, R06W API # 30-045 3927666
14. Distance in Miles from Nearest Town 42.8 miles to Blanco, NM Post Office	12. County Rio Arriba 13. State NM
15. Distance from Proposed Location to Nearest Property or Lease Line 670'	
16. Acres in Lease	17. Acres Assigned to Well 320 W/2
18. Distance from Proposed Location to Nearest Well, Drlg, Compl, or Applied for on this Lease 715'	
19. Proposed Depth 3176'	20. Rotary or Cable Tools Rotary
21. Elevations (DF, FT, GR, Etc.) 6259' GR	22. Approx. Date Work will Start
23. Proposed Casing and Cementing Program See Operations Plan attached	
24. Authorized by: <u>Joni Clark</u> Regulatory Specialist	<u>12/24/03</u> Date

PERMIT NO.

APPROVAL DATE

APPROVED BY D. Manley

TITLE AFM

DATE 5-21-04

Archaeological Report attached

Threatened and Endangered Species Report attached

NOTE: This format is issued in lieu of U.S. BLM Form 3160-3

Title 18 U.S.C. Section 1001, makes it a crime for any person knowingly and willfully to make to any department or agency of the United States any false, fictitious or fraudulent statements or presentations as to any matter within its jurisdiction.

OR
SUBJECT TO COMPLIANCE WITH ATTACHED
"GENERAL REQUIREMENTS".

NMOC

This action is subject to technical and
procedural review pursuant to 43 CFR 3165.3
and appeal pursuant to 43 CFR 3165.4

DISTRICT I
1625 N. French Dr., Hobbs, N.M. 88240

State of New Mexico
Energy, Minerals & Natural Resources Department

Form C-102
Revised August 15, 2000

DISTRICT II
811 South First, Artesia, N.M. 88210

DISTRICT III
1000 Rio Brazos Rd., Aztec, N.M. 87410

DISTRICT IV
2040 South Pacheco, Santa Fe, NM 87505

OIL CONSERVATION DIVISION
2040 South Pacheco
Santa Fe, NM 87505

Submit to Appropriate District Office
State Lease - 4 Copies
Fee Lease - 3 Copies

☐ AMENDED REPORT

WELL LOCATION AND ACREAGE DEDICATION PLAT

*API Number 30-039-27666	*Pool Code 71629	*Pool Name Basin Fruitland Coal
*Property Code 7469	*Property Name SAN JUAN 30-6 UNIT	*Well Number 452S
*OGRID No. 14538	*Operator Name BURLINGTON RESOURCES OIL AND GAS COMPANY LP	*Elevation 6259'

¹⁰ Surface Location

UL or lot no.	Section	Township	Range	Lot Idn	Feet from the	North/South line	Feet from the	East/West line	County
E	8	30-N	6-W		2485'	NORTH	670'	WEST	RIO ARriba

¹¹ Bottom Hole Location If Different From Surface

UL or lot no.	Section	Township	Range	Lot Idn	Feet from the	North/South line	Feet from the	East/West line	County
Dedicated Acres FTC W/320			Joint or Infill		Consolidation Code		Order No.		

NO ALLOWABLE WILL BE ASSIGNED TO THIS COMPLETION UNTIL ALL INTERESTS HAVE BEEN CONSOLIDATED
OR A NON-STANDARD UNIT HAS BEEN APPROVED BY THE DIVISION

16

CALC'D COR.	N 89-55 E 5272.08' (R)	CALC'D COR.
S 00-01-00 W 2640.00' (R)	SF-079002	
2485'	LAT: 36°49.6492' N. (NAD 27) LONG: 107°29.5400' W. (NAD 27)	
670'	8	
FD 2 1/2" G.L.O. BC 1914	NM-03403	

17 OPERATOR CERTIFICATION

I hereby certify that the information contained herein
is true and complete to the best of my knowledge and
belief

Joni Clark
Signature
Joni Clark
Printed Name
Regulatory Specialist
Title
December 24, 2003
Date

18 SURVEYOR CERTIFICATION

I hereby certify that the well location shown on this plat
was plotted from field notes of actual surveys made by
me or under my supervision, and that the same is true
and correct to the best of my belief.

11-12-03
Date of Survey
Signature and Seal of Professional Surveyor:
14827
Certificate Number

OPERATIONS PLAN

Well Name: San Juan 30-6 Unit # 452S
Location: 2485' FNL, 670' FWL Section 8, T-30-N, R-06-W
Latitude 36° 49.6492'N, Longitude 107° 29.5400'W
Rio Arriba, NM
Formation: Basin Fruitland Coal
Elevation: 6259'GR

Formation:	Top	Bottom	Contents
Surface	San Jose	2224'	
Ojo Alamo	2224'	2336'	aquifer
Kirtland	2336'	2727'	
Fruitland	2727'	2956'	
Intermediate TD	2906'		
Fruitland Coal	2956'	3091'	gas
B/Basal Coal	3091'	3198'	gas
Total Depth	3176'		
Pictured Cliffs	3198'		

Logging Program: none
Mudlog: from 7" to 3176'
Coring Program: none

Mud Program:

Interval	Type	Weight	Vis.	Fluid Loss
0- 120'	Spud Mud/Air/Air Mist	8.4-9.0	40-50	no control
120-2906'	Non-dispersed	8.4-9.0	30-60	no control
2906-3176'	Air/Mist			

Casing Program (as listed, the equivalent, or better):

Hole Size	Depth Interval	Csg. Size	Wt.	Grade
12 1/4"	0' - 120'	9 5/8"	32.3#	H-40
8 3/4"	0' - 2906'	7"	20.0#	J-55
6 1/4"	2906' - 3176'	open hole		

Alternate Casing Program (as listed, the equivalent, or better):

Hole Size	Depth Interval	Csg. Size	Wt.	Grade
12 1/4"	0' - 120'	9 5/8"	32.3#	H-40
8 3/4"	0' - 2906'	7"	20.0#	J-55
6 1/4"	2846' - 3176'	5 1/2"	15.5#	J-55

Tubing Program:

0' - 3176' 2 3/8" 4.7# J-55

Float Equipment: 9 5/8" surface casing - saw tooth guide shoe. Centralizers will be run in accordance with Onshore Order #2.

7" intermediate casing - guide shoe and self-fill float collar. Standard centralizers run every other joint above shoe. Two turbolizing type centralizers - one below and one into the base of the Ojo Alamo @ 2336'. Standard centralizers thereafter every fourth joint up to the base of the surface pipe.

Wellhead Equipment: 9 5/8" x 7" x 2 3/8" x 11" 2000 psi xmas tree assembly.

Cementing:

9 5/8" surface casing -

Pre-Set Drilled Cement with 23 sx Type I, II cement with 20% flyash mixed at 14.5 ppg, 1.61 cu ft per sack yield. (37 cu ft of slurry, bring cement to surface) Wait on cement for 24 hours for pre-set holes before pressure testing or drilling out from under surface.

Conventionally Drilled

Cement with 88 sx Type III cement with 0.25 pps Celloflake, 3% CaCl. (113 cu ft of slurry, 200% excess, bring cement to surface) Wait on cement for 8 hrs for conventionally set holes before pressure testing or drilling out from under surface.

WOC until cement establishes 250 psi compressive strength prior to NU of BOPE.

7" intermediate casing - lead w/249 sacks Premium Lite with 3% calcium chloride, 5 pps LCM-1, and 1/4#/sack flocele, 0.4% FL-52, & 0.4% SMS. Tail with 90 sacks Type III cmt with 1% calcium chloride, 1/4#/sack flocele and 0.2% FL-52 (655 cu.ft., 50% excess to circulate to surface).

5 1/2" liner - will not be cemented if run.

Note: If open hole logs are run, cement volumes will be based on 25% excess over caliper volumes.

BOP and tests:

Surface to intermediate TD - 11" 2000 psi (minimum) double gate BOP stack (Reference Figure #1). Prior to drilling out surface casing, test rams to 600#/30 min.

Intermediate TD to Total Depth - 7 1/6" 2000 psi (minimum) double gate BOP stack (Reference Figure #2). Prior to drilling out intermediate casing, test blind rams and casing to 1500 psi for 30 minutes; all pipe rams and casing to 1500 psi for 30 minutes each.

From surface to TD - choke manifold (Reference Figure #3).

Pipe rams will be actuated at least once each day and blind rams actuated once each trip to test proper functioning. An upper kelly cock valve with handle and drill string safety valves to fit each drill string will be maintained and available on the rig floor.

Additional information:

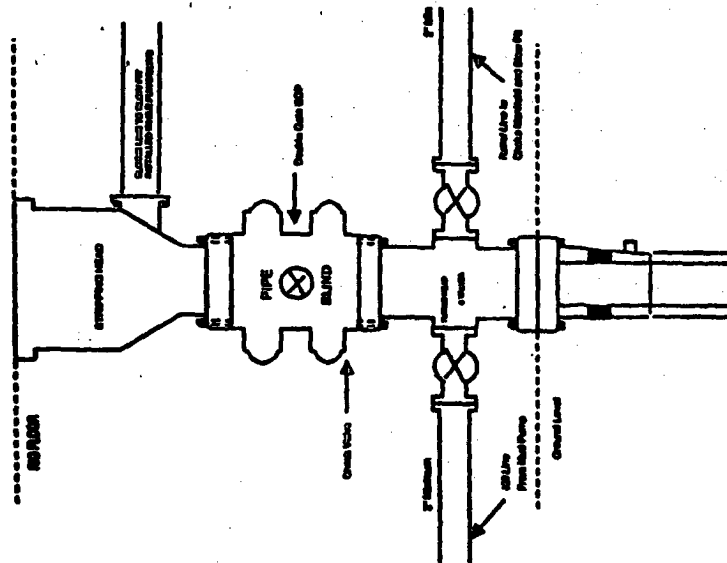
- * The Fruitland Coal formation will be completed.
- * Anticipated pore pressure for the Fruitland is less than 500 psi.
- * This gas is dedicated.
- * The west half of Section 8 is dedicated to the Fruitland Coal.

Date: February 11, 2004

Drilling Engineer:

Jennifer McCarthy

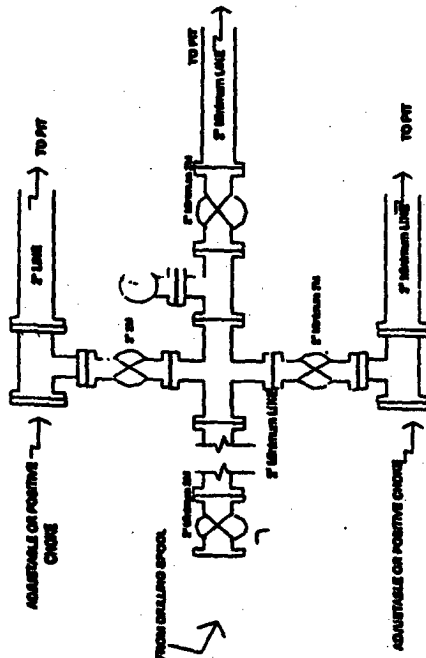
Completion/Workover Rig
BOP Configuration
2,000 psi System



Minimum BOP Installation for all Completion/Workover Operations. 7-1/16" bore, 2000 psi minimum working pressure double gate BOP to be equipped with blind and pipe rams. A stripping head to be installed on the top of the BOP. All BOP equipment is 2000 psi working pressure or greater excluding 800 psi stripping head.

Figure #2

Drilling Rig
Choke Manifold Configuration
2000 psi System

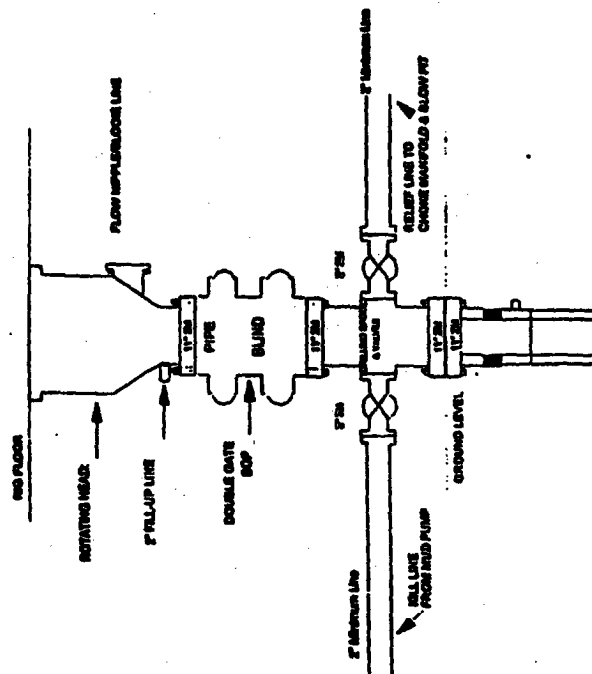


Choke manifold installation from Surface Casing Feet to Total Depth. 2,000psi working pressure equipment with two chokes.

Figure #3

4-20-01

Drilling Rig
2000 psi System



BOP Installation from Surface Casing Point to Total Depth. 11" Bore 10" Nominal, 2000 psi working pressure double gate BOP to be equipped with blind rams and pipe rams. A 200 psi casing head on top of ram preventer. All BOP equipment is 2,000 psi working pressure.

Figure #1

4-20-01

**UNITED STATES
DEPARTMENT OF THE INTERIOR
BUREAU OF LAND MANAGEMENT**

Sundry Notices and Reports on Wells

RECEIVED

2004 APR 27 PM 3:51

1. Type of Well
GAS

070 FARMINGTON, NM

Lease Number
NMSF-079002

If Indian, All. or
Tribe Name

2. Name of Operator

**BURLINGTON
RESOURCES**

OIL & GAS COMPANY

7. Unit Agreement Name

3. Address & Phone No. of Operator

PO Box 4289, Farmington, NM 87499 (505) 326-9700

4. Location of Well, Footage, Sec., T, R, M

2485' FNL, 670' FWL, Sec.8, T30N, R6W, NMPM

8. Well Name & Number

San Juan 30-6 Unit #452S

9. API Well No.

30-039-27066

10. Field and Pool

Basin Fruitland Coal

11. County and State

Rio Arriba, NM

12. CHECK APPROPRIATE BOX TO INDICATE NATURE OF NOTICE, REPORT, OTHER DATA

Type of Submission

Type of Action

☒ Notice of Intent☐ Abandonment☒ Change of Plans☐ Subsequent Report☐ Recompletion☐ New Construction☐ Final Abandonment☐ Plugging Back☐ Non-Routine Fracturing☐ Casing Repair☐ Water Shut off☐ Altering Casing☐ Conversion to Injection☐ Other

13. Describe Proposed or Completed Operations

The BOP configuration has been revised for the subject well according to the following and attached diagram:

BOP and tests:

Surface to intermediate TD - 11" 2000 psi (minimum) double gate BOP stack (Reference Figure #1). Prior to drilling out surface casing, test BOPE to 600 psi for 30 min.

Intermediate TD to Total Depth - 7 1/6" 2000 psi (minimum) completion BOP stack (Reference Figure #2). Prior to drilling out intermediate casing, test BOPE and casing to 1500 psi for 30 minutes.

From surface to 7" TD - a choke manifold will be installed in accordance with Onshore Order No. 2 (Reference Figure #3). When the cavitation completion rig drills the production hole, the completion rig configuration will be used (Reference Figure #4).

Pipe rams will be actuated at least once each day and blind rams actuated once each trip to test proper functioning. An upper kelly cock valve with handle and drill string safety valves to fit each drill string will be maintained and available on the rig floor.

14. I hereby certify that the foregoing is true and correct.

Signed Tammy Wimsatt Title Regulatory Specialist Date 04/013/04
fsb

(This space for Federal or State Office use)

APPROVED BY [Signature] Title AFM Date 5-21-04

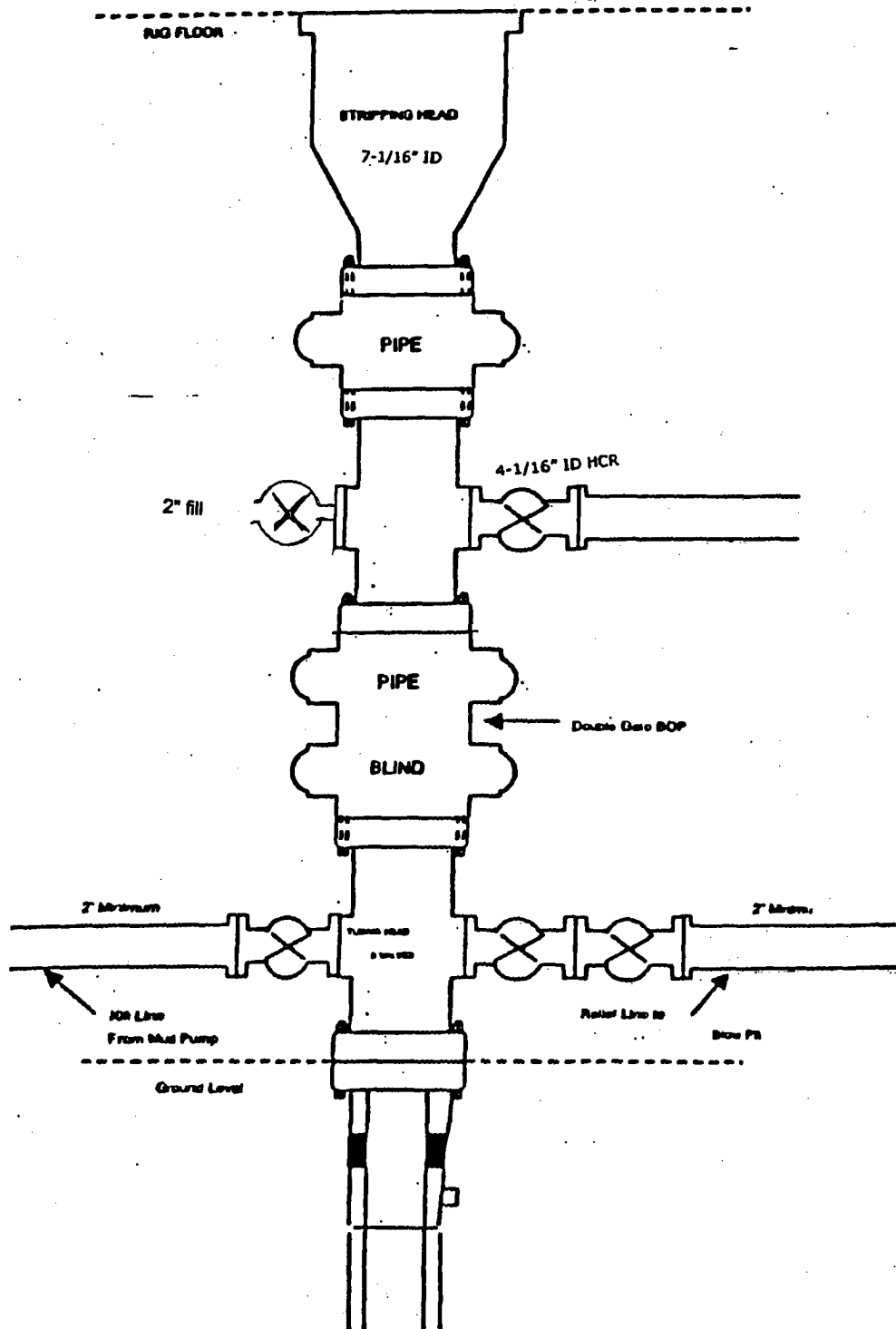
CONDITION OF APPROVAL, if any:

Title 18 U.S.C. Section 1001, makes it a crime for any person knowingly and willfully to make to any department or agency of the United States any false, fictitious or fraudulent statements or representations as to any matter within its jurisdiction.

NMOC

BURLINGTON RESOURCES

Figure #4
Cavitation Rig
BOP Configuration
2,000 psi Minimum System



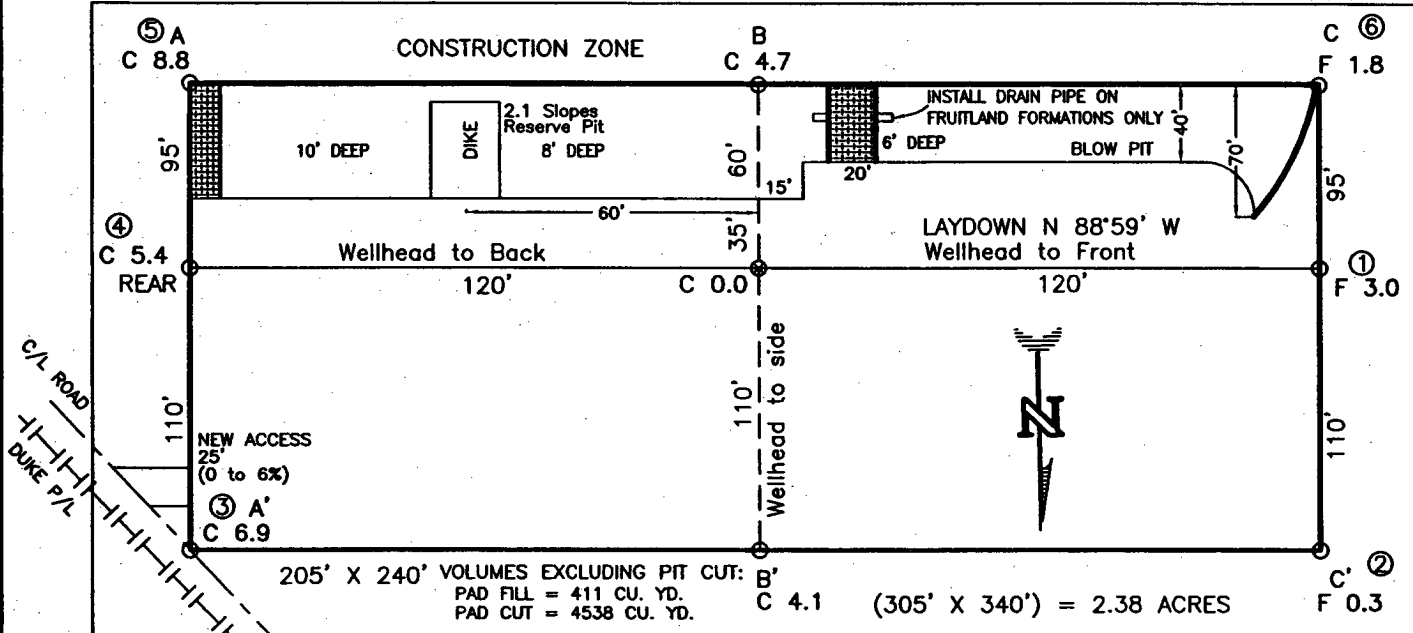
BURLINGTON RESOURCES OIL & GAS COMPANY LP
SAN JUAN 30-6 UNIT No. 452S, 2485 FNL 670 FWL
SECTION 8, T-30-N, R-6-W, N.M.P.M., RIO ARRIBA COUNTY, NEW MEXICO
GROUND ELEVATION: 6259', DATE: OCTOBER 30, 2003

B.L.M. BOUNDARY

B.L.M.

B.O.R. BOUNDARY

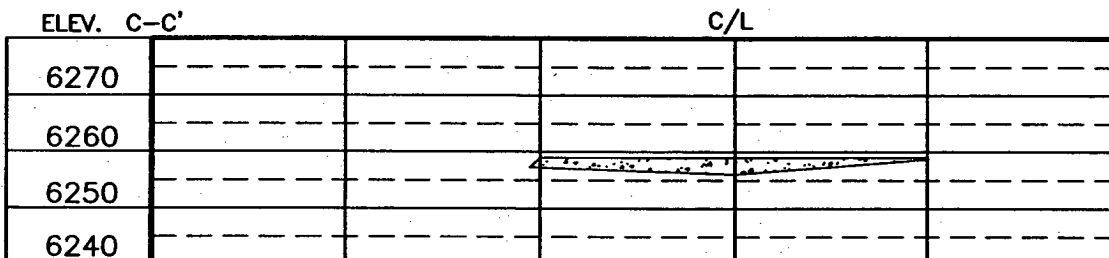
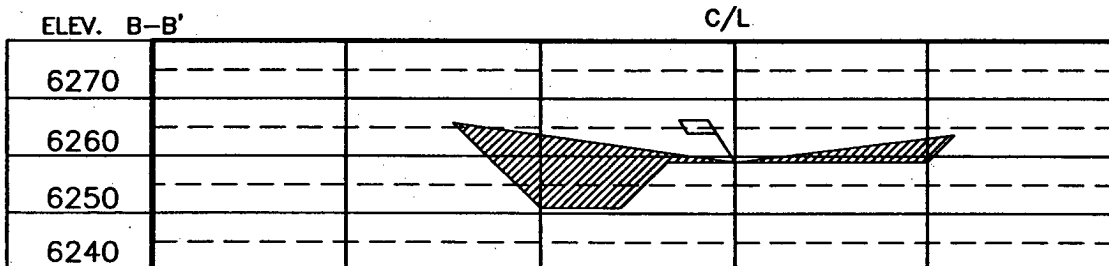
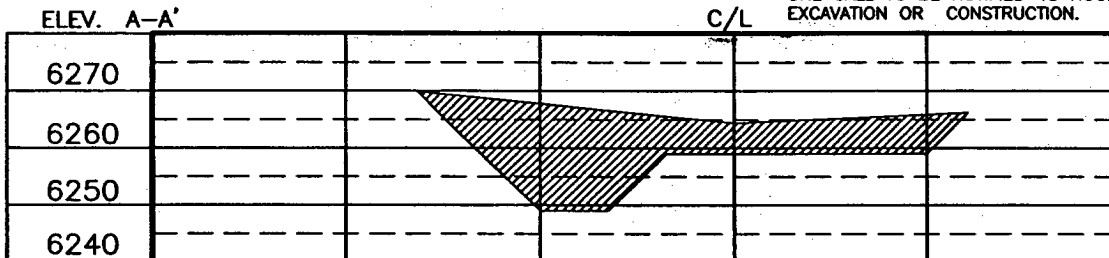
B.O.R.



RESERVE PIT DIKE: TO BE 8' ABOVE DEEP SIDE (OVERFLOW - 3' WIDE AND 1' ABOVE SHALLOW SIDE).
 BLOW PIT: OVERFLOW PIPE HALFWAY BETWEEN TOP AND BOTTOM AND TO EXTEND OVER PLASTIC LINER AND INTO BLOW PIT.

NOTE:

DAGGETT ENTERPRISES, INC. IS NOT LIABLE FOR UNDERGROUND UTILITIES OR PIPELINES. NEW MEXICO ONE CALL TO BE NOTIFIED 48 HOURS PRIOR TO EXCAVATION OR CONSTRUCTION.



NOTE: CONTRACTOR SHOULD CALL ONE-CALL FOR LOCATION OF ANY MARKED OR UNMARKED BURIED PIPELINES OR CABLES ON WELL PAD AND OR ACCESS ROAD AT LEAST TWO (2) WORKING DAYS PRIOR TO CONSTRUCTION.

BURLINGTON RESOURCES

SAN JUAN DIVISION

Released May 26, 2004

January 20, 2004

(Certified Mail – Return Receipt Requested)

Re: San Juan 30-6 Unit 452S
Basin Fruitland Coal
2485'FNL, 670'FWL Section 8, T-30-N, R-6-W
Rio Arriba County, New Mexico

To the Affected Persons:

Burlington Resources Oil & Gas Company LP is submitting the enclosed Application for Permit to Drill to the appropriate regulatory agency(s) for approval. This well is located inside the High Productivity Area of the Basin-Fruitland Coal Pool as indicated on the attached plat. Notice is being made pursuant to New Mexico Oil Conservation Commission Order R-8768-F dated July 17, 2003.

The affected parties have twenty (20) days from receipt of this notice in which to file with the District Office of the New Mexico Oil Conservation Division written objection to the proposed Application for Permit to Drill.

Sincerely,

Frances Bond

Frances Bond
Regulatory Assistant



Legend



FRUITLAND COAL

Current Oper 2

Current Operator



BROG

CONOCOPHILLIPS



Sections



Townships

San Juan Federal Units Outlines



U.S. Water Bodies



N

BURLINGTON
RESOURCES



1:71,167,736 - 1" equals 5,930,645'

GCS North American 1927

BURLINGTON RESOURCES

San Juan

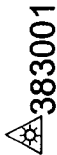
San Juan 30-6 Unit 452S - HPA

T30N, R6W

Prepared By: mib Date: 1/5/2004

File Number: Revised Date: 1/5/2004

File Name: Public\Projects\1 San Juan Basin Users\1 San Juan Basin Users.mxd



383001

2083701

6

378801



5

2083901



318201



7

317101



84962201



San Juan 30-6 Unit 452S

30N6W

8

315001



328401



439301



318701



315101



17

8400



2. Article Number		COMPLETE THIS SECTION ON DELIVERY	
1. Article Addressee CONOCO PHILLIPS COMPANY ATTN CHIEF LANDMAN SAN JUAN/ROCKIES PO BOX 2197 HOUSTON, TX 77252-2197		A. Signature X <i>[Signature]</i>	
		<input type="checkbox"/> Agent <input type="checkbox"/> Addressee	
		B. Received by (Printed Name)	C. Date of Delivery JAN 26 2004
		D. Is delivery address different from item 1? <input type="checkbox"/> Yes If YES enter delivery address below	
		3. Service Type <input checked="" type="checkbox"/> Certified	
		4. Restricted Delivery? (Extra Fee) <input type="checkbox"/> Yes	

PS Form 3811

3:49 PM 1/5/2004

Code: ETC HPA INFI Domestic Return Receipt

File: SJ306 UNIT 4526