

UNITED STATES
DEPARTMENT OF THE INTERIOR
BUREAU OF LAND MANAGEMENT

APPLICATION FOR PERMIT TO DRILL, DEEPEN, OR PLUG BACK

1a. Type of Work DRILL	5. Lease Number NMSF-079002 Unit Reporting Number
1b. Type of Well GAS	6. If Indian, All. or Tribe
2. Operator BURLINGTON RESOURCES Oil & Gas Company	7. Unit Agreement Name San Juan 30-6 Unit
3. Address & Phone No. of Operator PO Box 4289, Farmington, NM 87499 (505) 326-9700	8. Farm or Lease Name San Juan 30-6 Unit 9. Well Number #430S
4. Location of Well 1490' FSL, 525' FEL Latitude 36° 49.4368'N, Longitude 107° 28.7067'W	10. Field, Pool, Wildcat Basin Fruitland Coal 11. Sec., Twn, Rge, Mer. (NMPM) Sec. 8, T30N, R06W API # 30-045- 639 27735
14. Distance in Miles from Nearest Town 14 miles to Gobernador, NM	12. County Rio Arriba 13. State NM
15. Distance from Proposed Location to Nearest Property or Lease Line 525'	
16. Acres in Lease	17. Acres Assigned to Well 320 E/2
18. Distance from Proposed Location to Nearest Well, Drig, Compl, or Applied for on this Lease 700'	
19. Proposed Depth 3147'	20. Rotary or Cable Tools Rotary
21. Elevations (DF, FT, GR, Etc.) 6234' GR	22. Approx. Date Work will Start
23. Proposed Casing and Cementing Program See Operations Plan attached	
24. Authorized by: <u>Joni Clark</u> Regulatory Specialist	<u>12-30-03</u> Date

PERMIT NO.

APPROVAL DATE

APPROVED BY J. Montoya

TITLE AFM

DATE 6.18.04

Archaeological Report attached

Threatened and Endangered Species Report attached

NOTE: This format is issued in lieu of U.S. BLM Form 3160-3

Title 18 U.S.C. Section 1001, makes it a crime for any person knowingly and willfully to make to any department or agency of the United States any false, fictitious or fraudulent statements or presentations as to any matter within its jurisdiction.

NO HPA NOTIFICATION NEEDED UNDER ORDER R-8768F.

District I
PO Box 1980, Hobbs, NM 88241-1980

State of New Mexico
Energy, Minerals & Natural Resources Department

Form C-102
Revised February 21, 1994

District II
PO Drawer DD, Artesia, NM 88211-0719

District III
1000 Rio Brazos Rd., Aztec, NM 87410

District IV
PO Box 2088, Santa Fe, NM 87504-2088

OIL CONSERVATION DIVISION
PO Box 2088
Santa Fe, NM 87504-2088

Submit to Appropriate District Office
State Lease - 4 Copies
Fee Lease - 3 Copies

RECEIVED

☐ AMENDED REPORT

2004 MAY 10 PM 2:09

WELL LOCATION AND ACREAGE DEDICATION PLAT

*API Number 30-039- 27735	*Pool Code 71629	*Pool Name 070 Farmington, NM Basin Fruitland Coal
*Property Code 7469	*Property Name SAN JUAN 30-6 UNIT	*Well Number 430S
*GRID No. 14538	*Operator Name BURLINGTON RESOURCES OIL & GAS COMPANY, LP	*Elevation 6234'

¹⁰ Surface Location

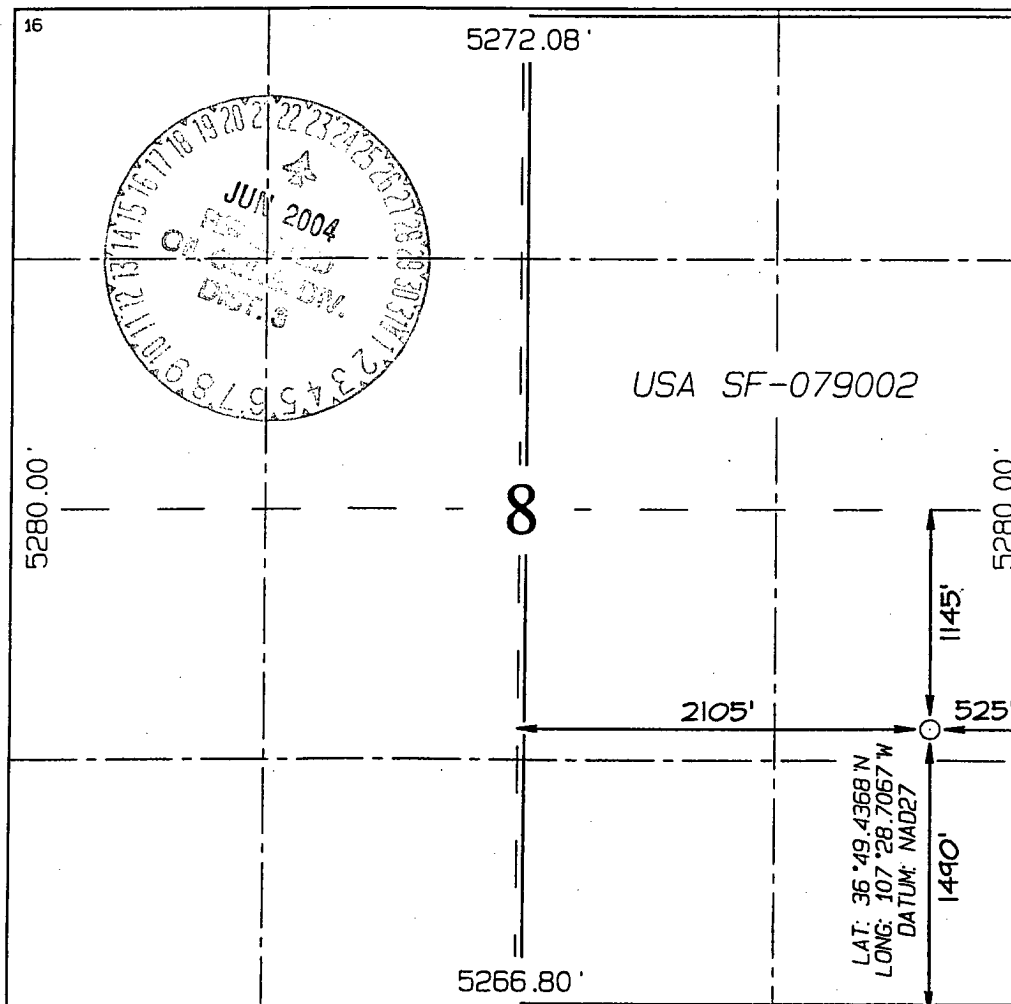
UL or lot no.	Section	Township	Range	Lot Idn	Feet from the	North/South line	Feet from the	East/West line	County
I	8	30N	6W		1490	SOUTH	525	EAST	RIO ARriba

¹¹ Bottom Hole Location If Different From Surface

UL or lot no.	Section	Township	Range	Lot Idn	Feet from the	North/South line	Feet from the	East/West line	County

¹² Dedicated Acres FTC E/320	¹³ Joint or Infill	¹⁴ Consolidation Code	¹⁵ Order No.
--	-------------------------------	----------------------------------	-------------------------

NO ALLOWABLE WILL BE ASSIGNED TO THIS COMPLETION UNTIL ALL INTERESTS HAVE BEEN CONSOLIDATED
OR A NON-STANDARD UNIT HAS BEEN APPROVED BY THE DIVISION



¹⁷ OPERATOR CERTIFICATION

I hereby certify that the information
contained herein is true and complete
to the best of my knowledge and belief

Joni Clark
Signature

Joni Clark
Printed Name

Regulatory Specialist
Title

December 24, 2003
Date

¹⁸ SURVEYOR CERTIFICATION

I hereby certify that the well location
shown on this plat was plotted from field
notes of actual surveys made by me or under
my supervision, and that the same is true
and correct to the best of my belief.

Survey Date: OCTOBER 17, 2003

Signature and Seal of Professional Surveyor



JASON C. EDWARDS

Certificate Number 15269

OPERATIONS PLAN

Well Name: San Juan 30-6 Unit # 430S
Location: 1490' FSL, 525' FEL Section 8, T-30-N, R-06-W
Latitude 36° 49.4368'N, Longitude 107° 28.7067'W
Rio Arriba, NM
Formation: Basin Fruitland Coal
Elevation: 6234'GR

Formation:	Top	Bottom	Contents
Surface	San Jose	2252'	
Ojo Alamo	2252'	2357'	aquifer
Kirtland	2357'	2684'	
Fruitland	2684'	2931'	
Intermediate TD	2901'		
Fruitland Coal	2931'	3062'	gas
B/Basal Coal	3062'	3173'	gas
Total Depth	3147'		
Pictured Cliffs	3173'		

Logging Program: none
Mudlog: from 7" to 3147'
Coring Program: none

Mud Program:

<u>Interval</u>	<u>Type</u>	<u>Weight</u>	<u>Vis.</u>	<u>Fluid Loss</u>
0- 120'	Spud Mud/Air/Air Mist	8.4-9.0	40-50	no control
120-2901'	Non-dispersed	8.4-9.0	30-60	no control
2901-3147'	Air/Mist			

Casing Program (as listed, the equivalent, or better):

<u>Hole Size</u>	<u>Depth Interval</u>	<u>Csg. Size</u>	<u>Wt.</u>	<u>Grade</u>
12 1/4"	0' - 120'	9 5/8"	32.3#	H-40
8 3/4"	0' - 2901'	7"	20.0#	J-55
6 1/4"	2901' - 3147'	open hole		

Alternate Casing Program (as listed, the equivalent, or better):

<u>Hole Size</u>	<u>Depth Interval</u>	<u>Csg. Size</u>	<u>Wt.</u>	<u>Grade</u>
12 1/4"	0' - 120'	9 5/8"	32.3#	H-40
8 3/4"	0' - 2901'	7"	20.0#	J-55
6 1/4"	2861' - 3147'	5 1/2"	15.5#	J-55

Tubing Program:

0' - 3147'	2 3/8"	4.7#	J-55
------------	--------	------	------

Float Equipment: 9 5/8" surface casing - saw tooth guide shoe. Centralizers will be run in accordance with Onshore Order #2.

7" intermediate casing - guide shoe and self-fill float collar. Standard centralizers run every other joint above shoe. Two turbolizing type centralizers - one below and one into the base of the Ojo Alamo @ 2357'. Standard centralizers thereafter every fourth joint up to the base of the surface pipe.

Wellhead Equipment: 9 5/8" x 7" x 2 3/8" x 11" 2000 psi xmas tree assembly.

Cementing:

9 5/8" surface casing -

Pre-Set Drilled Cement with 23 sx Type I, II cement with 20% flyash mixed at 14.5 ppg, 1.61 cu ft per sack yield. (37 cu ft of slurry, bring cement to surface) Wait on cement for 24 hours for pre-set holes before pressure testing or drilling out from under surface.

Conventionally Drilled

Cement with 88 sx Type III cement with 0.25 pps Celloflake, 3% CaCl. (113 cu ft of slurry, 200% excess, bring cement to surface) Wait on cement for 8 hrs for conventionally set holes before pressure testing or drilling out from under surface.

WOC until cement establishes 250 psi compressive strength prior to NU of BOPE.

7" intermediate casing - lead w/248 sacks Premium Lite with 3% calcium chloride, 5 pps LCM-1, and 1/4#/sack flocele, 0.4% FL-52, & 0.4% SMS. Tail with 90 sacks Type III cmt with 1% calcium chloride, 1/4#/sack flocele and 0.2% FL-52 (654 cu.ft., 50% excess to circulate to surface).

5 1/2" liner - will not be cemented if run.

Note: If open hole logs are run, cement volumes will be based on 25% excess over caliper volumes.

BOP and tests:

Surface to intermediate TD - 11" 2000 psi (minimum) double gate BOP stack (Reference Figure #1). Prior to drilling out surface casing, test rams to 600#/30 min.

Intermediate TD to Total Depth - 7 1/6" 2000 psi (minimum) double gate BOP stack (Reference Figure #2) Prior to drilling out intermediate casing, test blind rams and casing to 1500 psi for 30 minutes; all pipe rams and casing to 1500 psi for 30 minutes each.

From surface to TD - choke manifold (Reference Figure #3).

Pipe rams will be actuated at least once each day and blind rams actuated once each trip to test proper functioning. An upper kelly cock valve with handle and drill string safety valves to fit each drill string will be maintained and available on the rig floor.

Additional information:

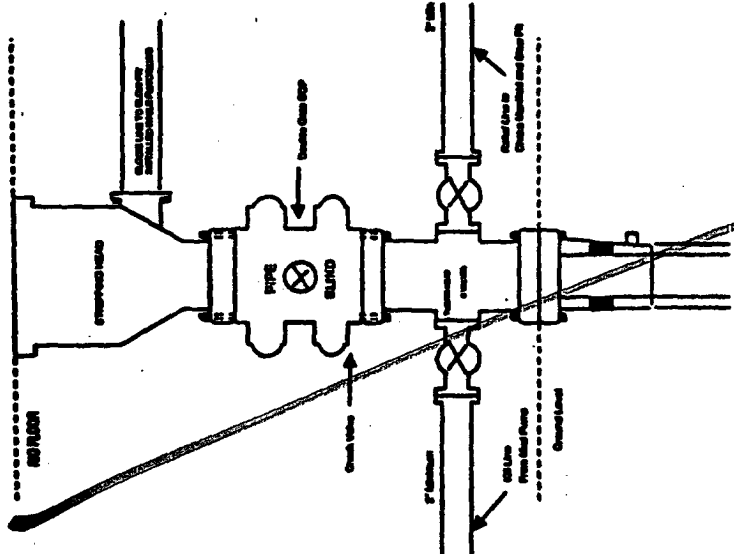
- * The Fruitland Coal formation will be completed.
- * Anticipated pore pressure for the Fruitland is less than 500 psi.
- * This gas is dedicated.
- * The east half of Section 8 is dedicated to the Fruitland Coal.

Date: February 19, 2004

Drilling Engineer:

James McCarthy

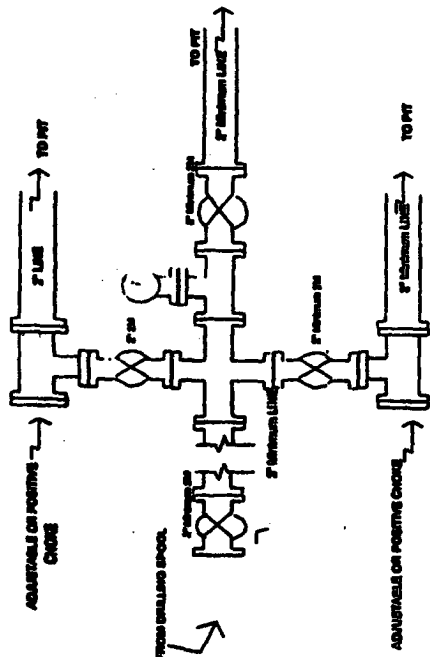
Completion/Workover Rig
BOP Configuration
2,000 psi System



Minimum BOP Installation for all Completion/Workover Operations. 7-1/16" bore, 2000 psi minimum working pressure double gate BOP to be equipped with blind and pipe rams. A stripping head to be installed on the top of the BOP. All BOP equipment is 2000 psi working pressure or greater excluding 600 psi stripping head.

Figure #2

Drilling Rig
Choke Manifold Configuration
2000 psi System

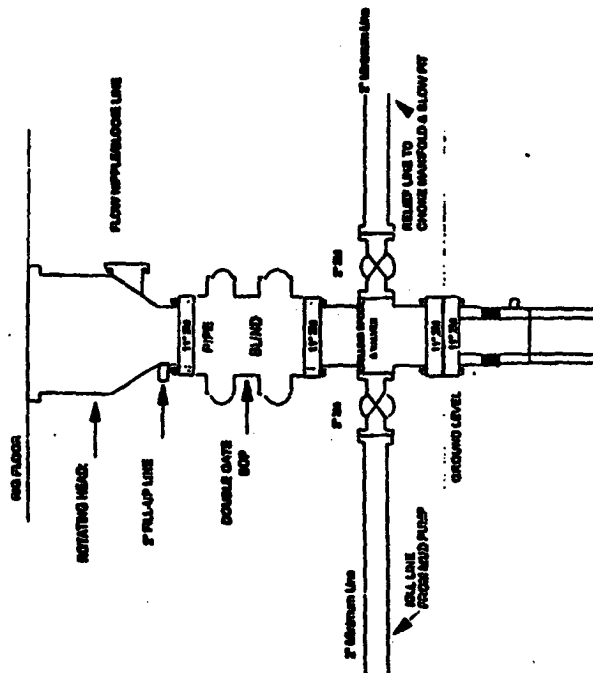


Choke manifold Installation from Surface Casing Point to Total Depth. 2,000psi working pressure equipment with two chokes.

Figure #3

4-20-01

Drilling Rig
2000 psi System



BOP Installation from Surface Casing Point to Total Depth. 1 1/2" Bore 10" Working, 2000 psi working pressure double gate BOP to be equipped with blind and pipe rams. A stripping head to be installed on top of the BOP. All BOP equipment is 2,000 psi working pressure.

Figure #1

4-20-01

Submit 3 Copies To Appropriate District
Office

District I

1625 N. French Dr., Hobbs, NM 88240

District II

1301 W. Grand Ave., Artesia, NM 88210

District III

1000 Rio Brazos Rd., Aztec, NM 87410

District IV

1220 S. St. Francis Dr., Santa Fe, NM
87505

State of New Mexico
Energy, Minerals and Natural Resources

OIL CONSERVATION DIVISION

1220 South St. Francis Dr.
Santa Fe, NM 87505

Form C-103

March 4, 2004

WELL API NO.

30-039-

5. Indicate Type of Lease

STATE ☐ FEE ☐

6. State Oil & Gas Lease No.

NMSF-079002

7. Lease Name or Unit Agreement Name

San Juan 30-6 Unit

8. Well Number

430S

9. OGRID Number

14538

10. Pool name or Wildcat

Basin Fruitland Coal

SUNDRY NOTICES AND REPORTS ON WELLS

(DO NOT USE THIS FORM FOR PROPOSALS TO DRILL OR TO DEEPEN OR PLUG BACK TO A
DIFFERENT RESERVOIR. USE "APPLICATION FOR PERMIT" (FORM C-101) FOR SUCH
PROPOSALS.)

1. Type of Well:

Oil Well ☐ Gas Well ☒ Other

2. Name of Operator

Burlington Resources Oil & Gas Company LP

3. Address of Operator

3401 E. 30th Street, Farmington, NM 87402

4. Well Location

Unit Letter I : 1490 feet from the South line and 525 feet from the East line

Section 8 Township 30N Range 6W NMPM Rio Arriba County, NM

11. Elevation (Show whether DR, RKB, RT, GR, etc.)

Pit or Below-grade Tank Application (For pit or below-grade tank closures, a form C-144 must be attached)

Pit Location: UL I Sect 8 Twp 30N Rng 6W Pit type New Depth to Groundwater <50' Distance from nearest fresh water

well >1000' Distance from nearest surface water >1000' Below-grade Tank Location UL Sect Twp Rng ;

feet from the line and feet from the line

12. Check Appropriate Box to Indicate Nature of Notice, Report or Other Data
NOTICE OF INTENTION TO:

PERFORM REMEDIAL WORK ☐ PLUG AND ABANDON ☐

TEMPORARILY ABANDON ☐ CHANGE PLANS ☐

PULL OR ALTER CASING ☐ MULTIPLE COMPLETION ☐

OTHER: New Drill Pit ☒

SUBSEQUENT REPORT OF:

REMEDIAL WORK ☐ ALTERING CASING ☐

COMMENCE DRILLING OPNS. ☐ PLUG AND ABANDONMENT ☐

CASING TEST AND CEMENT JOB ☐

OTHER: ☐

13. Describe proposed or completed operations. (Clearly state all pertinent details, and give pertinent dates, including estimated date of starting any proposed work). SEE RULE 1103. For Multiple Completions: Attach wellbore diagram of proposed completion or recompletion.

Burlington Resources proposes to construct a new drill pit. The new drill pit will be a lined pit as detailed in Burlington's general pit construction plan dated April 26, 2004 on file at the NMOCD office.

I hereby certify that the information above is true and complete to the best of my knowledge and belief. I further certify that any pit or below-grade tank has been/will be constructed or closed according to NMOCD guidelines ☐, a general permit ☒ or an (attached) alternative OCD-approved plan ☐.

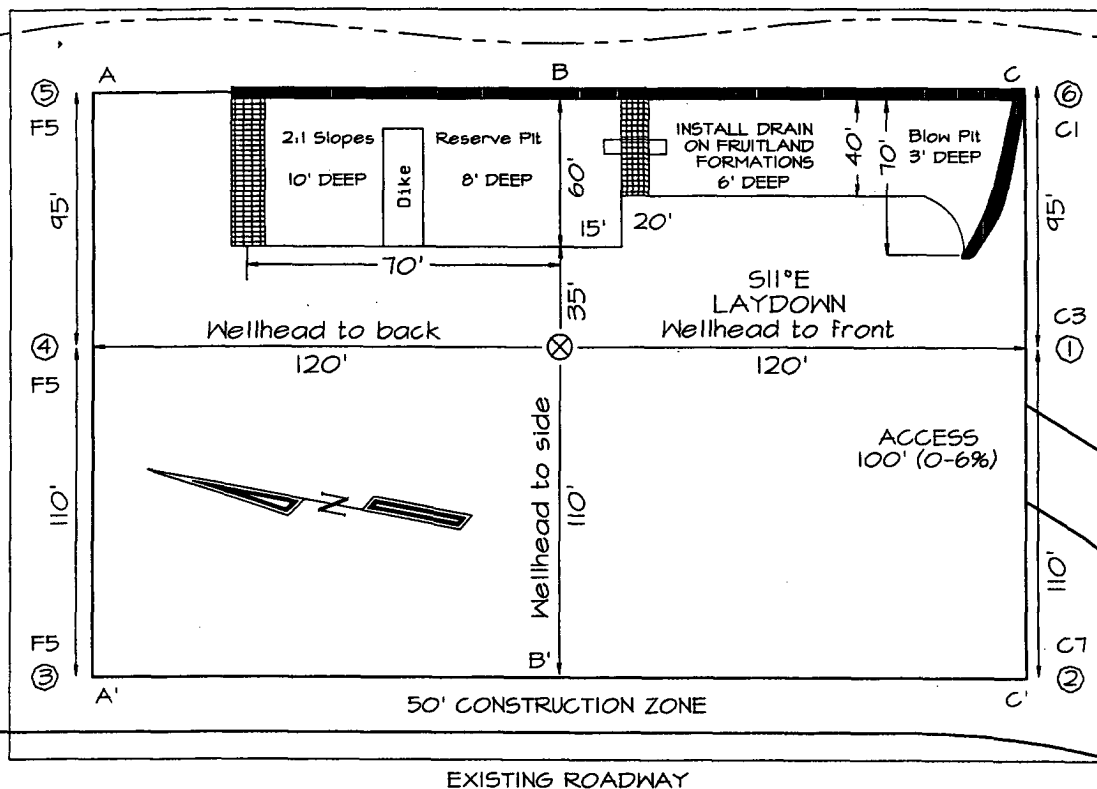
SIGNATURE Cassady Harraden TITLE Regulatory Specialist DATE 5/6/04

Type or print name Cassady Harraden E-mail address: charraden@br-inc.com Telephone No. 326-9700

(This space for State use)

APPROVED BY [Signature] TITLE DATE
Conditions of approval, if any:

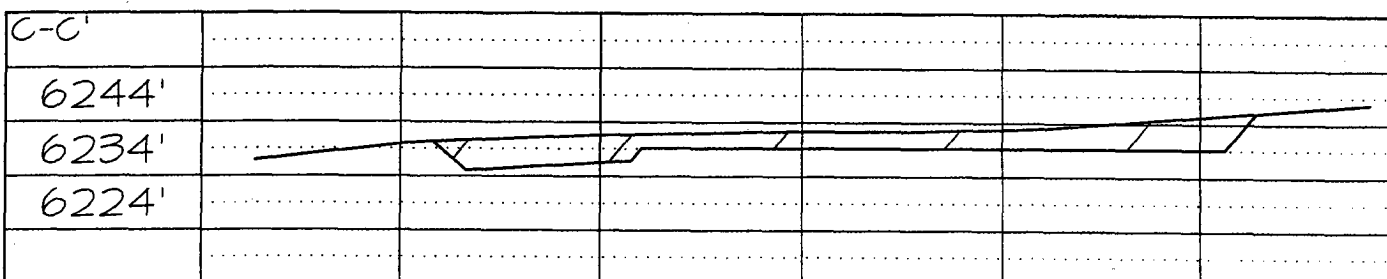
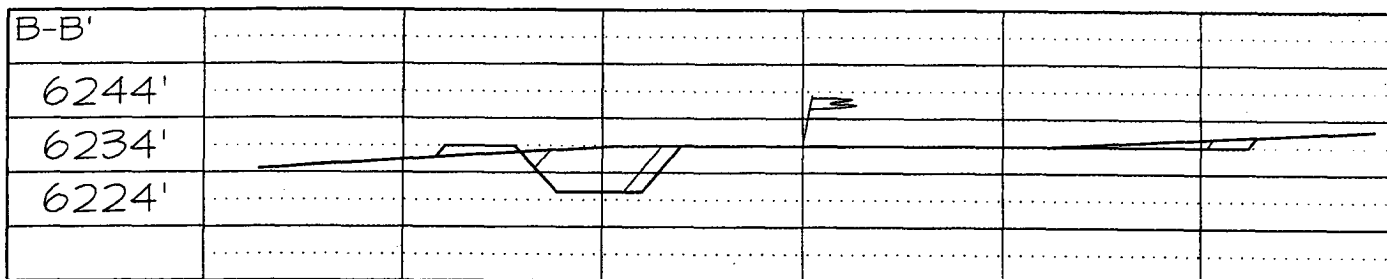
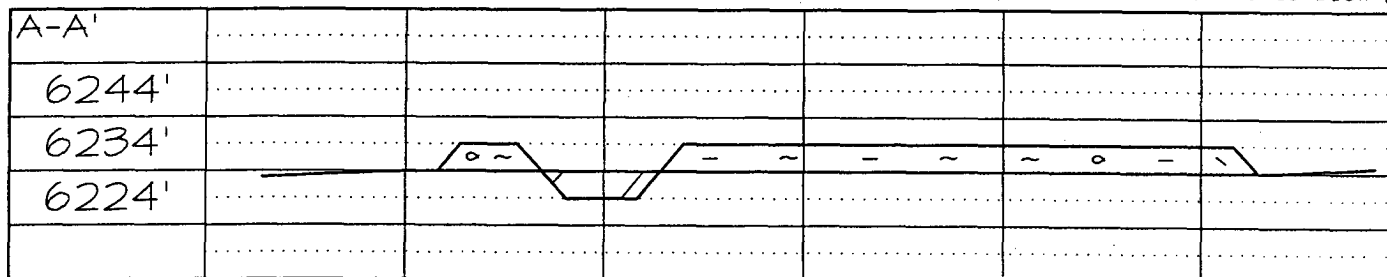
1490' FSL & 525' FEL, SECTION 8, T30N, R6W, NMPM, RIO ARriba COUNTY, NM
GROUND ELEVATION: 6234' DATE: OCTOBER 17, 2003



LATITUDE: 36°49'26"
LONGITUDE: 107°28'42"
DATUM: NAD1927

205' X 240'
305' X 340' = 2.38 ACRES

Reserve Pit Dike: to be 8' above Deep side (overflow - 3' wide and 1' above shallow side).
Blow Pit: overflow pipe halfway between top and bottom and to extend over plastic liner and into blow pit.



Note: Contractor should call One-Call for location of any marked or unmarked buried pipelines or cables on well pad and/or access road at least two (2) working days prior to construction