

UNITED STATES
DEPARTMENT OF THE INTERIOR
BUREAU OF LAND MANAGEMENT

APPLICATION FOR PERMIT TO DRILL, DEEPEN, OR PLUG BACK

RECEIVED

1a. Type of Work DRILL	5. Lease Number NMSF-080713 Unit Reporting Number 070 Farmington, NM
1b. Type of Well GAS	6. If Indian, All. or Tribe
2. Operator BURLINGTON RESOURCES Oil & Gas Company	7. Unit Agreement Name San Juan 30-6 Unit
3. Address & Phone No. of Operator PO Box 4289, Farmington, NM 87499 (505) 326-9700	8. Farm or Lease Name San Juan 30-6 Unit 9. Well Number #438S
4. Location of Well 1260' FSL, 715' FEL Latitude 36° 49.3985'N, Longitude 107° 24.5778'W	10. Field, Pool, Wildcat Basin Fruitland Coal 11. Sec., Twn, Rge, Mer. (NMPM) 0 Sec. 12, T30N, R06W API # 30-039-27752
14. Distance in Miles from Nearest Town 18 miles to Gobernador, NM	12. County Rio Arriba 13. State NM
15. Distance from Proposed Location to Nearest Property or Lease Line 715'	
16. Acres in Lease	17. Acres Assigned to Well 227.48 E/2
18. Distance from Proposed Location to Nearest Well, Drig, Compl, or Applied for on this Lease 600'	
19. Proposed Depth 3086'	20. Rotary or Cable Tools Rotary
21. Elevations (DF, FT, GR, Etc.) 6186 GR	22. Approx. Date Work will Start
23. Proposed Casing and Cementing Program See Operations Plan attached	
24. Authorized by: <u>Nancy Oltnans</u> Regulatory Specialist	<u>1-12-04</u> Date

PERMIT NO.

APPROVAL DATE

APPROVED BY

TITLE

DATE

Archaeological Report attached

Threatened and Endangered Species Report attached

NOTE: This format is issued in lieu of U.S. BLM Form 3160-3

Title 18 U.S.C. Section 1001, makes it a crime for any person knowingly and willfully to make to any department or agency of the United States any false, fictitious or fraudulent statements or presentations as to any matter within its jurisdiction.

NO HPA NOTIFICATION REQUIRED UNDER ORDER R-8768F.

NMOCD

DRILLING OPERATIONS AUTHORIZED ARE
SUBJECT TO COMPLIANCE WITH ATTACHED
"RECORD INDEMNITIES".

This action is subject to technical and
procedural review pursuant to 43 CFR 3165.3
and appeal pursuant to 43 CFR 3165.4

PU BOX 1300, 10000, NM 87504-2088
District II
PO Drawer DD, Artesia, NM 88211-0719
District III
1000 Rio Brazos Rd., Aztec, NM 87410
District IV
PO Box 2088, Santa Fe, NM 87504-2088

Energy, Minerals & Natural Resources Department
OIL CONSERVATION DIVISION
PO Box 2088
Santa Fe, NM 87504-2088

Instructions on back
Submit to Appropriate District Office
State Lease - 4 Copies
Fee Lease - 3 Copies

☐ AMENDED REPORT

WELL LOCATION AND ACREAGE DEDICATION PLAT

*API Number 30-039-27752		*Pool Code 71629	*Pool Name Basin Fruitland Coal
*Property Code 7469	*Property Name SAN JUAN 30-6 UNIT		*Well Number 438S
*OGRID No. 14538	*Operator Name BURLINGTON RESOURCES OIL & GAS COMPANY, LP		*Elevation 6186'

¹⁰ Surface Location

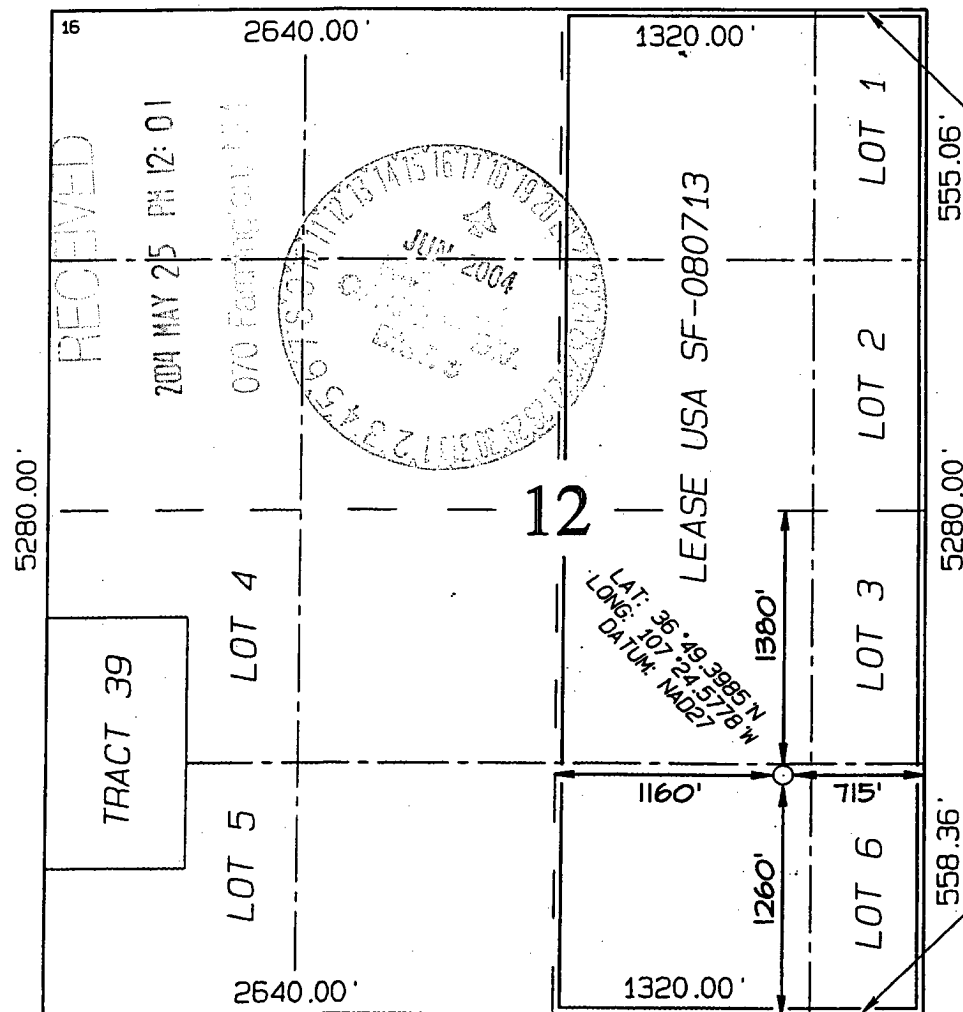
UL or lot no.	Section	Township	Range	Lot Idn	Feet from the	North/South line	Feet from the	East/West line	County
0	12	30N	6W		1260	SOUTH	715	EAST	RIO ARriba

¹¹ Bottom Hole Location If Different From Surface

UL or lot no.	Section	Township	Range	Lot Idn	Feet from the	North/South line	Feet from the	East/West line	County

¹² Dedicated Acres FTC E/227.48	¹³ Joint or Infill	¹⁴ Consolidation Code	¹⁵ Order No.
---	-------------------------------	----------------------------------	-------------------------

NO ALLOWABLE WILL BE ASSIGNED TO THIS COMPLETION UNTIL ALL INTERESTS HAVE BEEN CONSOLIDATED
OR A NON-STANDARD UNIT HAS BEEN APPROVED BY THE DIVISION



¹⁷ OPERATOR CERTIFICATION

I hereby certify that the information contained herein is true and complete to the best of my knowledge and belief

Nancy Oltmanns
Signature

Nancy Oltmanns
Printed Name

Senior Staff Specialist
Title

1-12-04
Date

¹⁸ SURVEYOR CERTIFICATION

I hereby certify that the well location shown on this plat was plotted from field notes of actual surveys made by me or under my supervision, and that the same is true and correct to the best of my belief.

Survey Date: OCTOBER 6, 2003

Signature and Seal of Professional Surveyor



JASON C. EDWARDS
Certificate Number 15269

OPERATIONS PLAN

Well Name: San Juan 30-6 Unit # 438S
Location: 1260' FSL, 715' FEL Section 12, T-30-N, R-06-W
Latitude 36° 49.3985'N, Longitude 107° 24.5778'W
Rio Arriba, NM
Formation: Basin Fruitland Coal
Elevation: 6186' GR

Formation:	Top	Bottom	Contents
Surface	San Jose	2243'	
Ojo Alamo	2243'	2358'	aquifer
Kirtland	2358'	2668'	
Fruitland	2668'	2865'	
Intermediate TD	2835'		
Fruitland Coal	2865'	3001'	gas
B/Basal Coal	3001'	3005'	gas
Pictured Cliffs	3005'		
Total Depth	3086'		

Logging Program: GR/Density 7" to 3086'

Mudlog: from 7" to 3086'

Coring Program: none

Mud Program:

Interval	Type	Weight	Vis.	Fluid Loss
0- 120'	Spud Mud/Air/Air Mist	8.4-9.0	40-50	no control
120-2835'	Non-dispersed	8.4-9.0	30-60	no control
2835-3086'	Air/Mist			

Casing Program (as listed, the equivalent, or better):

Hole Size	Depth Interval	Csg. Size	Wt.	Grade
12 1/4"	0' - 120'	9 5/8"	32.3#	H-40
8 3/4"	0' - 2835'	7"	20.0#	J-55
6 1/4"	2835' - 3086'	open hole		

Alternate Casing Program (as listed, the equivalent, or better):

Hole Size	Depth Interval	Csg. Size	Wt.	Grade
12 1/4"	0' - 120'	9 5/8"	32.3#	H-40
8 3/4"	0' - 2835'	7"	20.0#	J-55
6 1/4"	2795' - 3086'	5 1/2"	15.5#	J-55

Tubing Program:

0' - 3086'	2 3/8"	4.7#	J-55
------------	--------	------	------

Float Equipment: 9 5/8" surface casing - saw tooth guide shoe. Centralizers will be run in accordance with Onshore Order #2.

7" intermediate casing - guide shoe and self-fill float collar. Standard centralizers run every other joint above shoe. Two turbolizing type centralizers - one below and one into the base of the Ojo Alamo @ 2358'. Standard centralizers thereafter every fourth joint up to the base of the surface pipe.

Wellhead Equipment: 9 5/8" x 7" x 2 3/8" x 11" 2000 psi xmas tree assembly.

Cementing:

9 5/8" surface casing -

Pre-Set Drilled Cement with 23 sx Type I, II cement with 20% flyash mixed at 14.5 ppg, 1.61 cu ft per sack yield. (37 cu ft of slurry, bring cement to surface) Wait on cement for 24 hours for pre-set holes before pressure testing or drilling out from under surface.

Conventionally Drilled

Cement with 88 sx Type III cement with 0.25 pps Celloflake, 3% CaCl. (113 cu ft of slurry, 200% excess, bring cement to surface) Wait on cement for 8 hrs for conventionally set holes before pressure testing or drilling out from under surface.

WOC until cement establishes 250 psi compressive strength prior to NU of BOPE.

7" intermediate casing - lead w/241 sacks Premium Lite with 3% calcium chloride, 5 pps LCM-1, and 1/4#/sack flocele, 0.4% FL-52, & 0.4% SMS. Tail with 90 sacks Type III cmt with 1% calcium chloride, 1/4#/sack flocele and 0.2% FL-52 (639 cu.ft., 50% excess to circulate to surface).

5 1/2" liner - will not be cemented if run.

Note: If open hole logs are run, cement volumes will be based on 25% excess over caliper volumes.

BOP and tests:

Surface to intermediate TD - 11" 2000 psi (minimum) double gate BOP stack (Reference Figure #1). Prior to drilling out surface casing, test BOPE to 600 psi for 30 min.

Intermediate TD to Total Depth - 7 1/6" 2000 psi (minimum) completion BOP stack (Reference Figure #2) Prior to drilling out intermediate casing, test BOPE and casing to 1500 psi for 30 minutes.

From surface to 7" TD - a choke manifold will be installed in accordance with Onshore Order No. 2 (Reference Figure #3). When the cavitation completion rig drills the production hole, the completion rig configuration will be used (Reference Figure #4).

Pipe rams will be actuated at least once each day and blind rams actuated once each trip to test proper functioning. An upper kelly cock valve with handle and drill string safety valves to fit each drill string will be maintained and available on the rig floor.

Additional information:

- * The Fruitland Coal formation will be completed.
- * Anticipated pore pressure for the Fruitland is less than 500 psi.
- * This gas is dedicated.
- * The east half of Section 12 is dedicated to the Fruitland Coal.

Date: 4-21-04

Drilling Engineer: Jim McCauley

BURLINGTON RESOURCES

**Completion/Workover Rig
BOP Configuration
2,000 psi System**

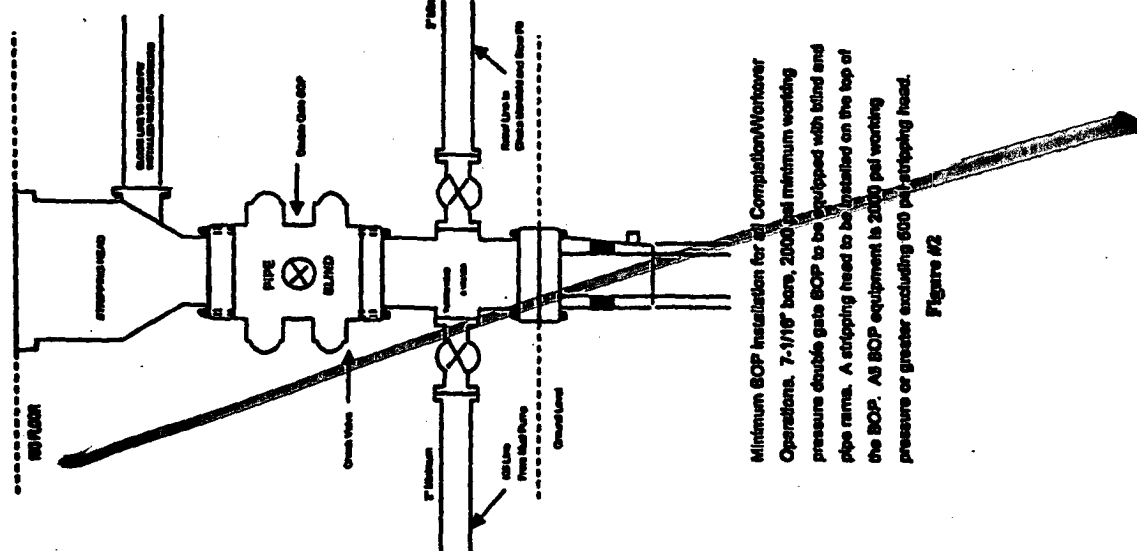


Figure #2

Minimum SOP Installation for all Completion/Workover Operations. 7-1/8" bore, 2000 psi and minimum working pressure double gate BOP to be equipped with blind and pipe rams. A stopping head to be installed on the top of the BOP. All BOP equipment to 2000 psi working pressure or greater excluding 500 psi stopping head.

BURLINGTON RESOURCES

**Drilling Rig
Choke Manifold Configuration
2000 psi System**

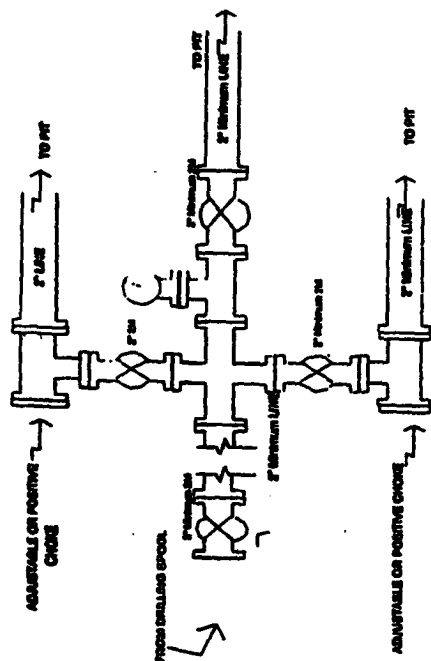


Figure #3

**Choke manifold installation from Surface Casing
Point to Total Depth. 2,000psi working pressure
equipment with two chokes.**

4-20-01

Burlington Resources

Drilling Rig 10 psi System

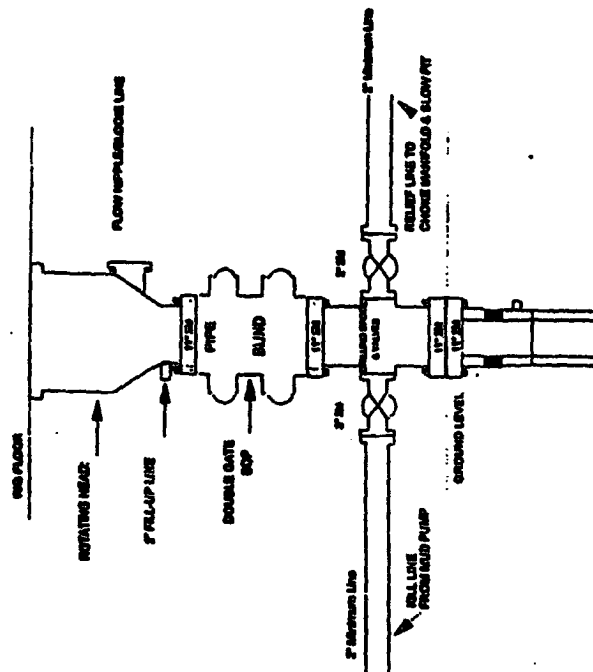


Figure S1

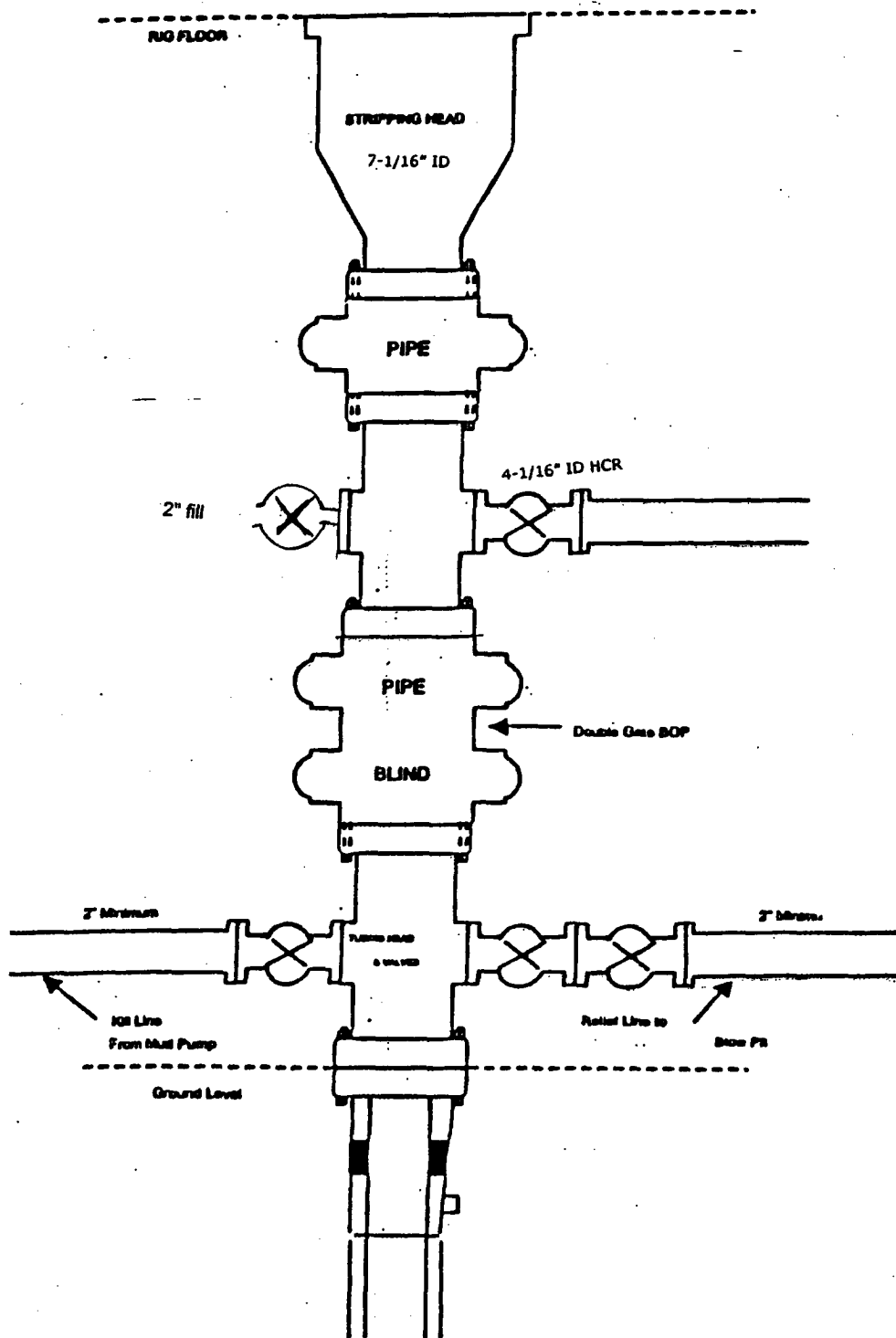
SOP Installed from Surface Casing Point to Total Depth. 11" Bore 18" Nominal, 2000 psi working pressure double gate SOP to be equipped with 5/8" rods and pipe rams. A SOP psi reading head on top of each prover. All SOP equipment is 3,000 psi working pressure.

A-20-01

BURLINGTON RESOURCES

FIGURE #4

Cavitation Rig
BOP Configuration
2,000 psi Minimum System



Submit 3 Copies To Appropriate District
Office,
District I
1625 N. French Dr., Hobbs, NM 88240
District II
1301 W. Grand Ave., Artesia, NM 88210
District III
1000 Rio Brazos Rd., Aztec, NM 87410
District IV
1220 S. St. Francis Dr., Santa Fe, NM
87505

State of New Mexico
Energy, Minerals and Natural Resources

Form C-103
March 4, 2004

OIL CONSERVATION DIVISION
1220 South St. Francis Dr.
Santa Fe, NM 87505

WELL API NO. 30-039-
5. Indicate Type of Lease STATE <input type="checkbox"/> FEE <input type="checkbox"/>
6. State Oil & Gas Lease No.
7. Lease Name or Unit Agreement Name San Juan 30-6 Unit
8. Well Number 438S
9. OGRID Number 14538
10. Pool name or Wildcat Basin Fruitland Coal

SUNDRY NOTICES AND REPORTS ON WELLS
(DO NOT USE THIS FORM FOR PROPOSALS TO DRILL OR TO DEEPEN OR PLUG BACK TO A
DIFFERENT RESERVOIR. USE "APPLICATION FOR PERMIT" (FORM C-101) FOR SUCH
PROPOSALS.)

1. Type of Well:
Oil Well ☐ Gas Well ☒ Other

2. Name of Operator
Burlington Resources Oil & Gas Company LP

3. Address of Operator
3401 E. 30th Street, Farmington, NM 87402

4. Well Location
Unit Letter O : 1260 feet from the South line and 715 feet from the East line
Section 12 Township 30N Range 6W NMPM Rio Arriba County, NM

11. Elevation (Show whether DR, RKB, RT, GR, etc.)

Pit or Below-grade Tank Application (For pit or below-grade tank closures, a form C-144 must be attached)

Pit Location: UL O Sect 12 Twp 30N Rng 6W Pit type New Depth to Groundwater <50' Distance from nearest fresh water
well >1000' Distance from nearest surface water >1000' Below-grade Tank Location UL Sect Twp Rng ;
feet from the line and feet from the line

12. Check Appropriate Box to Indicate Nature of Notice, Report or Other Data

NOTICE OF INTENTION TO:

PERFORM REMEDIAL WORK ☐ PLUG AND ABANDON ☐
TEMPORARILY ABANDON ☐ CHANGE PLANS ☐
PULL OR ALTER CASING ☐ MULTIPLE COMPLETION ☐
OTHER: New Drill Pit ☒

SUBSEQUENT REPORT OF:

REMEDIAL WORK ☐ ALTERING CASING ☐
COMMENCE DRILLING OPNS. ☐ PLUG AND ABANDONMENT ☐
CASING TEST AND CEMENT JOB ☐
OTHER: ☐

13. Describe proposed or completed operations. (Clearly state all pertinent details, and give pertinent dates, including estimated date of starting any proposed work). SEE RULE 1103. For Multiple Completions: Attach wellbore diagram of proposed completion or recompletion.

Burlington Resources proposes to construct a new drill pit. The new drill pit will be a lined pit as detailed in Burlington's general pit construction plan dated April 26, 2004 on file at the NMOCD office.

I hereby certify that the information above is true and complete to the best of my knowledge and belief. I further certify that any pit or below-grade tank has been/will be constructed or closed according to NMOCD guidelines ☐, a general permit ☒ or an (attached) alternative OCD-approved plan ☐.

SIGNATURE Cassady Harraden TITLE Regulatory Specialist DATE 5/10/04

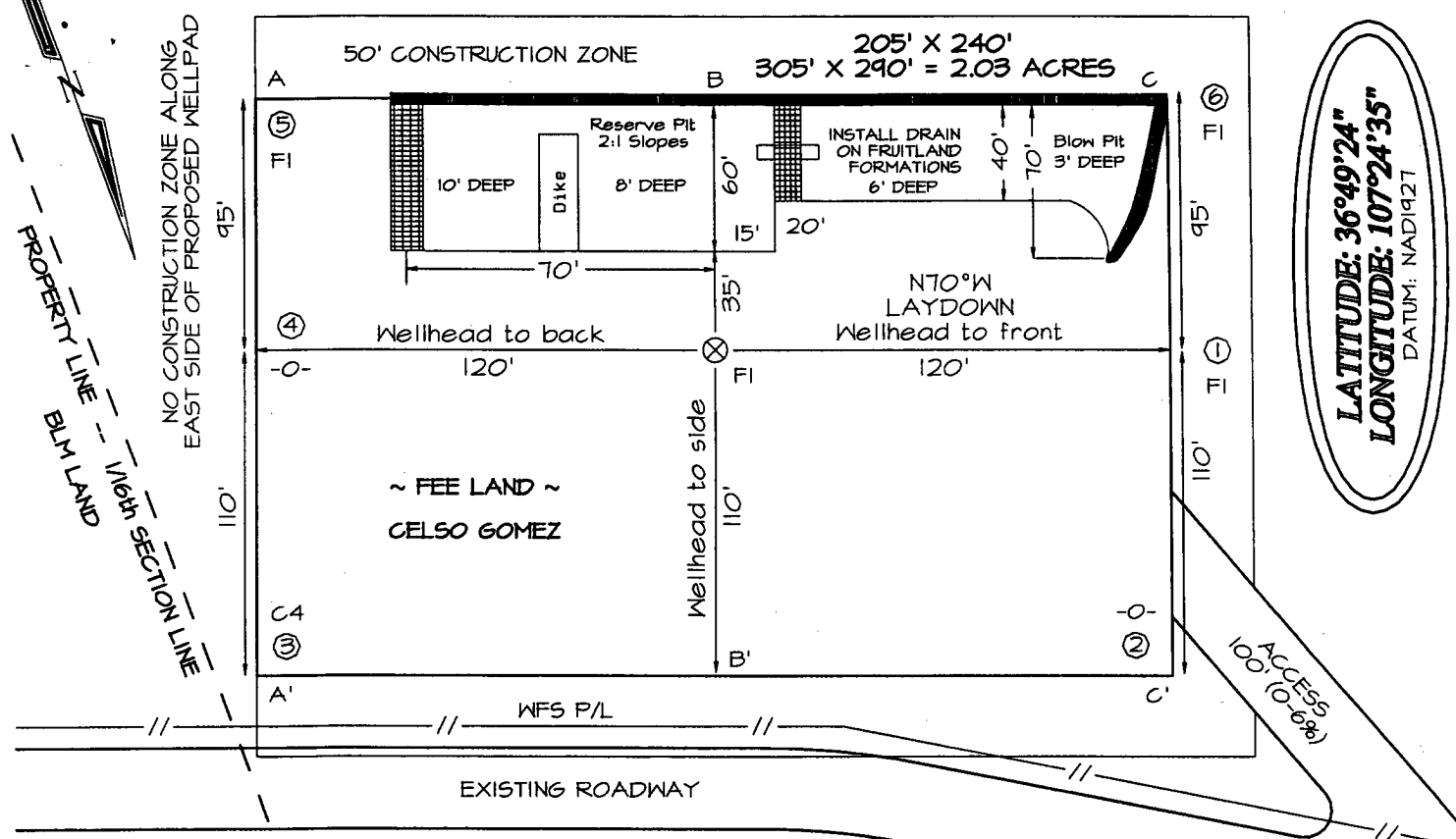
Type or print name Cassady Harraden E-mail address: charraden@br-inc.com Telephone No. 326-9700

(This space for State use)

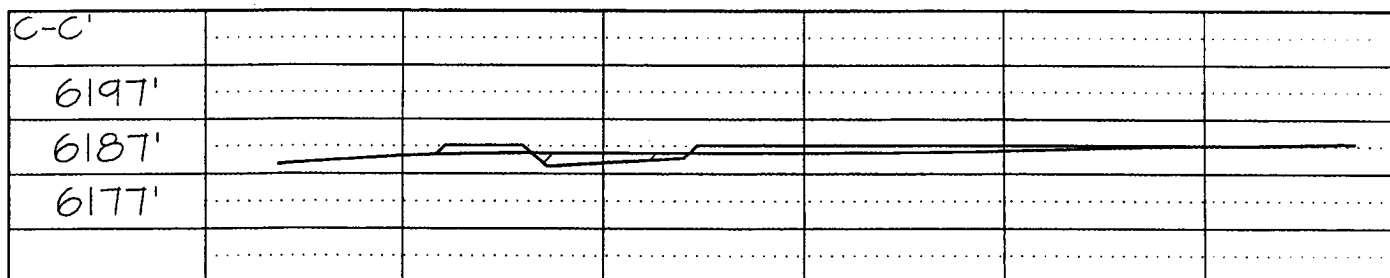
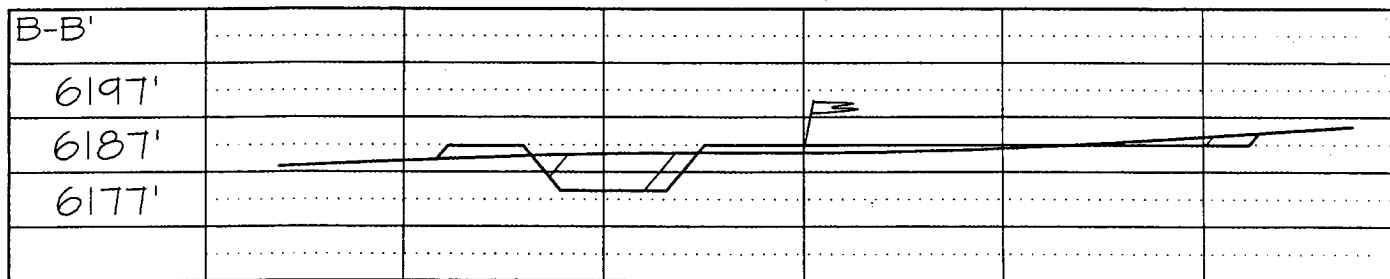
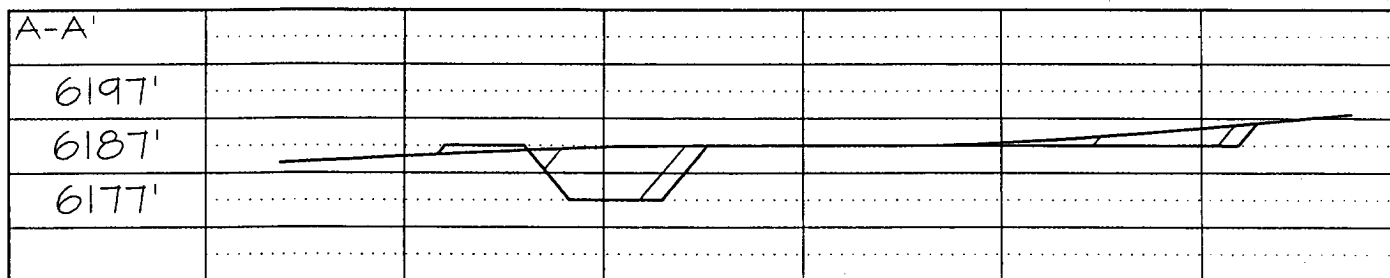
APPROVED BY [Signature] TITLE DATE
Conditions of approval, if any:

NO CONSTRUCTION ZONE ALONG
EAST SIDE OF PROPOSED WELLPAD

1/6th SECTION LINE
PROPERTY LINE
BLM LAND



Reserve Pit Dike: to be 8' above Deep side (overflow - 3' wide and 1' above shallow side).
Blow Pit: overflow pipe halfway between top and bottom and to extend over plastic liner and into blow pit.



Note: Contractor should call One-Call for location of any marked or unmarked buried pipelines or cables on well pad and/or access road at least two (2) working days prior to construction