

UNITED STATES
DEPARTMENT OF THE INTERIOR
BUREAU OF LAND MANAGEMENT

APPLICATION FOR PERMIT TO DRILL, DEEPEN, OR PLUG BACK

RECEIVED

1a. Type of Work DRILL	5. Lease Number NMNM04207 Unit Reporting Number 070 Farmington, NM
1b. Type of Well GAS	6. If Indian, All. or Tribe
2. Operator BURLINGTON RESOURCES Oil & Gas Company	7. Unit Agreement Name Allison Unit
3. Address & Phone No. of Operator PO Box 4289, Farmington, NM 87401 (505) 326-9700	8. Farm or Lease Name Allison Unit 9. Well Number 120S
4. Location of Well 1330' FSL, 1485' FEL Latitude 36° 56.8390'N, Longitude 107° 29.7460'W	10. Field, Pool, Wildcat Basin Fruitland Coal 11. Sec., Twn, Rge, Mer. (NMPM) Sec.30, T-32-N, R-6-W API # 30-045-31880
14. Distance in Miles from Nearest Town Ignacio 19 miles, Allison 7 miles	12. County San Juan 13. State NM
15. Distance from Proposed Location to Nearest Property or Lease Line 1330'	17. Acres Assigned to Well 320
16. Acres in Lease	
18. Distance from Proposed Location to Nearest Well, Drlg, Compl, or Applied for on this Lease 600'	
19. Proposed Depth 3255'	20. Rotary or Cable Tools Rotary
21. Elevations (DF, FT, GR, Etc.) 6352' GR	22. Approx. Date Work will Start
23. Proposed Casing and Cementing Program See Operations Plan attached	
24. Authorized by: <u>[Signature]</u> Regulatory/Compliance Supervisor	Date <u>8-20-03</u>

PERMIT NO. _____ APPROVAL DATE _____
APPROVED BY [Signature] TITLE AFM DATE 7-8-04

Archaeological Report to be submitted

Threatened and Endangered Species Report to be submitted

NOTE: This format is issued in lieu of U.S. BLM Form 3160-3

Title 18 U.S.C. Section 1001, makes it a crime for any person knowingly and willfully to make to any department or agency of the United States any false, fictitious or fraudulent statements or presentations as to any matter within its jurisdiction.

This action is subject to technical and procedural review pursuant to 43 CFR 3165.3 and appeal pursuant to 43 CFR 3165.4

DRILLING OPERATIONS AUTHORIZED ARE SUBJECT TO COMPLIANCE WITH ATTACHED "GENERAL REQUIREMENTS".

NMOC

District I
PO Box 1980, Hobbs, NM 88241-1980

State of New Mexico
Energy, Minerals & Natural Resources Department

Form C-102
Revised February 21, 1994

District II
PO Drawer DD, Artesia, NM 88211-0719

Instructions on back
Submit to Appropriate District Office
State Lease - 4 Copies
Fee Lease - 3 Copies

District III
1000 Rio Brazos Rd., Aztec, NM 87410

OIL CONSERVATION DIVISION
PO Box 2088
Santa Fe, NM 87504-2088

District IV
PO Box 2088, Santa Fe, NM 87504-2088

☐ AMENDED REPORT

WELL LOCATION AND ACREAGE DEDICATION PLAT

¹ API Number 30-045- 31880	² Pool Code 71629	³ Pool Name Basin Fruitland Coal
⁴ Property Code 6784	⁵ Property Name ALLISON UNIT	⁶ Well Number 120S
⁷ GRID No. 14538	⁸ Operator Name BURLINGTON RESOURCES OIL & GAS COMPANY, LP	⁹ Elevation 6352'

¹⁰ Surface Location

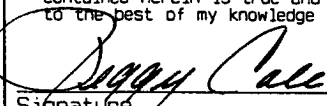
UL or lot no.	Section	Township	Range	Lot Idn	Feet from the	North/South line	Feet from the	East/West line	County
J	30	32N	6W		1330	SOUTH	1485	EAST	SAN JUAN


¹¹ Bottom Hole Location If Different From Surface

UL or lot no.	Section	Township	Range	Lot Idn	Feet from the	North/South line	Feet from the	East/West line	County
¹² Dedicated Acres E/320					¹³ Joint or Infill	¹⁴ Consolidation Code	¹⁵ Order No.		

NO ALLOWABLE WILL BE ASSIGNED TO THIS COMPLETION UNTIL ALL INTERESTS HAVE BEEN CONSOLIDATED
OR A NON-STANDARD UNIT HAS BEEN APPROVED BY THE DIVISION

¹⁶ 1275.12' LOT 1 2627.46' LOT 2 LOT 3 2648.58' LOT 4 1268.52'	1314.06'	<div>2657.82'</div> <div>FEE</div>		<div>2665.74'</div> <div>USA SF-081155</div>	<div>2630.10'</div> <div>FEE</div> <div>2670.36'</div>	<div>1485'</div>	<div>1330'</div>	<div>1175'</div>	<div>USA NM-04207</div>	<div>LAT: 36° 56.8390' N LONG: 107° 29.7460' W</div>	<div>30</div>	<div>070 Farmington, NM</div> <div>2003 AUG 26 PM 2:07</div> <div>RECEIVED</div>	<div>1321.98'</div>

¹⁷ OPERATOR CERTIFICATION
I hereby certify that the information contained herein is true and complete to the best of my knowledge and belief

Signature
Peggy Cole
Printed Name
Regulatory Supervisor
Title
8.20.03
Date

¹⁸ SURVEYOR CERTIFICATION
I hereby certify that the well location shown on this plat was plotted from field notes of actual surveys made by me or under my supervision, and that the same is true and correct to the best of my belief.
Survey Date: AUGUST 22, 2002
Signature and Seal of Professional Surveyor

JASON C. EDWARDS
Certificate Number 15269

OPERATIONS PLAN

Well Name: Allison Unit #120S
Location: 1330' FSL, 1485' FEL Section 30, T-32-N, R-6-W
Latitude 36° 56.8390'N, Longitude 107° 29.7460'W
San Juan County, NM
Formation: Basin Fruitland Coal
Elevation: 6352' GR

Formation:	Top	Bottom	Contents
Surface	San Jose	2208'	
Ojo Alamo	2208'	2330'	aquifer
Kirtland	2330'	2776'	
Fruitland	2776'	2979'	
Intermediate TD	2929'		
Fruitland Coal	2979'	3252'	gas
B/Basal Coal	3252'	3254'	gas
Pictured Cliffs	3254'		
Total Depth	3255'		

Logging Program: GR/RHOB from TD to 7"

Mudlog: from 7" to TD

Coring Program: none

Mud Program:

Interval	Type	Weight	Vis.	Fluid Loss
0- 120'	Spud	8.4-9.0	40-50	no control
120-2929'	Non-dispersed	8.4-9.0	30-60	no control
2929-3255'	Air/Mist			

Casing Program (as listed, the equivalent, or better):

Hole Size	Depth Interval	Csg. Size	Wt.	Grade
12 1/4"	0' - 120'	9 5/8"	32.3#	H-40
8 3/4"	0' - 2929'	7"	20.0#	J-55
6 1/4"	2929' - 3255'	open hole		

Alternate Casing Program (as listed, the equivalent, or better):

Hole Size	Depth Interval	Csg. Size	Wt.	Grade
12 1/4"	0' - 120'	9 5/8"	32.3#	H-40
8 3/4"	0' - 2929'	7"	20.0#	J-55
6 1/4"	2889' - 3255'	5 1/2"	15.5#	J-55

Tubing Program:

0' - 3255'	2 3/8"	4.7#	J-55
------------	--------	------	------

Float Equipment: 9 5/8" surface casing - saw tooth guide shoe. Centralizers will be run in accordance with Onshore Order #2.

7" intermediate casing - guide shoe and self-fill float collar. Standard centralizers run every other joint above shoe. Two turbolizing type centralizers - one below and one into the base of the Ojo Alamo @ 2330'. Standard centralizers thereafter every fourth joint up to the base of the surface pipe.

Wellhead Equipment: 9 5/8" x 7" x 2 3/8" x 11" 2000 psi xmas tree assembly.

Cementing:

9 5/8" surface casing - cement with 27 sx Type III cement w/2% calcium chloride, 0.25 pps celloflake (38 cu.ft. of slurry, bring cement to surface through 3/4" line) or equivalent. WOC 24 hours for pre-set holes or 8 hours for conventionally set holes before pressure testing or drilling out from under surface casing.

7" intermediate casing - lead w/252 sacks Premium Lite with 3% calcium chloride, 5 pps LCM-1, and 1/4#/sack flocele, 0.4% FL-52, & 0.4% SMS. Tail with 90 sacks Type III cmt with 1% calcium chloride, 1/4#/sack flocele and 0.2% FL-52 (660 cu.ft., 50% excess to circulate to surface).

5 1/2" liner - will not be cemented if run.

Note: If open hole logs are run, cement volumes will be based on 25% excess over caliper volumes.

BOP and tests:

Surface to intermediate TD - 11" 2000 psi (minimum) double gate BOP stack (Reference Figure #1). Prior to drilling out surface casing, test rams to 600#/30 min.

Intermediate TD to Total Depth - 7 1/6" 2000 psi (minimum) double gate BOP stack (Reference Figure #2). Prior to drilling out intermediate casing, test blind rams and casing to 1500 psi for 30 minutes; all pipe rams and casing to 1500 psi for 30 minutes each.

From surface to TD - choke manifold (Reference Figure #3).

Pipe rams will be actuated at least once each day and blind rams actuated once each trip to test proper functioning. An upper kelly cock valve with handle and drill string safety valves to fit each drill string will be maintained and available on the rig floor.

Additional information:

- * The Fruitland Coal formation will be completed.
- * Anticipated pore pressure for the Fruitland is less than 500 psi.
- * This gas is dedicated.
- * The east half of section 30 is dedicated to the Fruitland Coal.

Date: 8-22-2003

Drilling Engineer: Jennifer McCarthy

BURLINGTON RESOURCES

RECEIVED

SAN JUAN DIVISION

2004 FEB 11 AM 10:18

February 10, 2004

070 Farmington, NM

Bureau of Land Management
1235 La Plata Highway
Farmington, New Mexico 87401



Dear Adrienne Garcia:

The surface cement slurry has been changed for the following wells to:

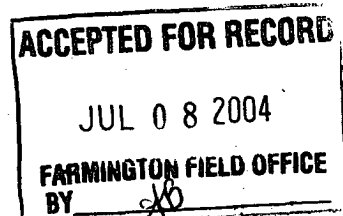
Cement with Type III cement with 0.25 pps Celloflake, 3% calcium chloride. (1.28 yeild, 15.2 ppg, 200% excess, bring cement to surface). Wait on cement appropriate time until cement achieves 250 psi compressive strength at 60 degrees F. prior to nipple up of BOPE. Wait on cement for 8 hrs for conventionally set holes before pressure testing or drilling out from under surface. Test casing to 600 psi for 30 minutes.

9-5/8" csg set @ 120'
88 sxs cmt
113 cu. ft. of slurry

Allison Unit 120S, NWSE, Sec. 30, T-32-N, R-6-W, Federal lease NM-04207.
Allison Unit 121S, SENW, Sec. 30, T-32-N, R-6-W, Federal lease SF-081155.
Carson SRC 101S, SWNW, Sec. 1, T-30-N, R-5-W, Federal lease NM-4453.
Federal G 1N, SESW, Sec. 35, T-31-N, R-12-W, Federal lease SF-078120A.
Hale 351S, SWNW, Sec. 34, T-31-N, R-8-W, Federal lease SF-079037.
Hale 352S, NWSE, Sec. 27, T-31-N, R-8-W, Federal lease SF-079037.
Howell A 301S, NENW, Sec. 4, T-30-N, R-8-W, Federal lease SF-078580.
Howell Com J 301S, NWNW, Sec. 11, T-30-N, R-8-W, Federal lease NM-010468.
Howell D 350S, SWSW, Sec. 28, T-31-N, R-8-W, Federal lease SF-078387.
Howell D 351S, SENW, Sec. 29, T-31-N, R-8-W, Federal lease SF-078387.
Johnston Federal 15S, NWSW, Sec. 35, T-31-N, R-9-W, Federal lease SF-078439.
Johnston Federal 26S, SWNW, Sec. 7, T-31-N, R-9-W, Federal lease SF-078439.
Johnston Federal 29S, SWSE, Sec. 7, T-31-N, R-9-W, Federal lease SF-078439.
San Juan 32-9 Unit 250S, SWSE, Sec. 4, T-31-N, R-9-W, Federal lease SF-080875.
San Juan 32-9 Unit 277S, SENW, Sec. 30, T-32-N, R-9-W, Federal lease SF-078509.
San Juan 32-9 Unit 283S, NENW, Sec. 33, T-32-N, R-9-W, Federal lease SF-079048.
Scott 100S, SENW, Sec. 29, T-32-N, R-10-W, Federal lease SF-078604.
Scott Com 291S, NESE, Sec. 29, T-32-N, R-10-W, Federal lease SF-078604.
Vanderslice 100S, SWNW, Sec. 18, T-32-N, R-10-W, Federal lease SF-078215A.
Waller 100S, SESE, Sec. 11, T-32-N, R-11-W, Federal lease SF-078119A.
Wilmer Canyon 101S, NENW, Sec. 25, T-32-N, R-8-W, Federal lease NM-6893.

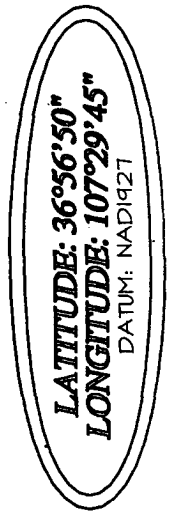
Sincerely,

Tammy Wimsatt
Regulatory Specialist

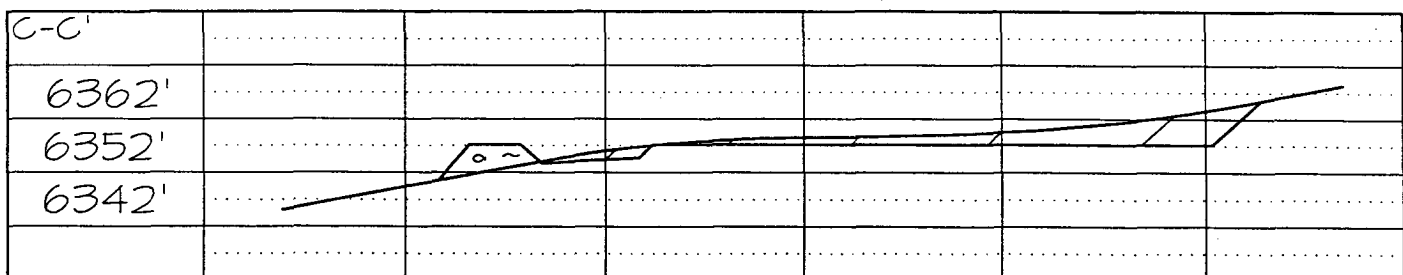
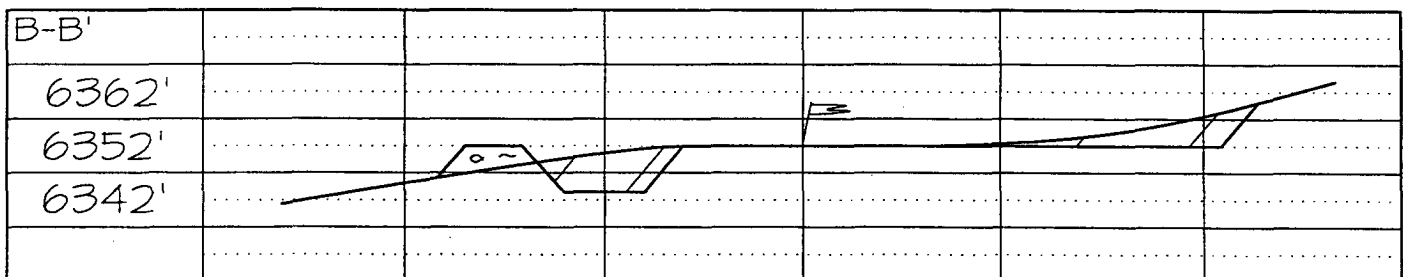


NMOCD

1/16th SECTION LINE

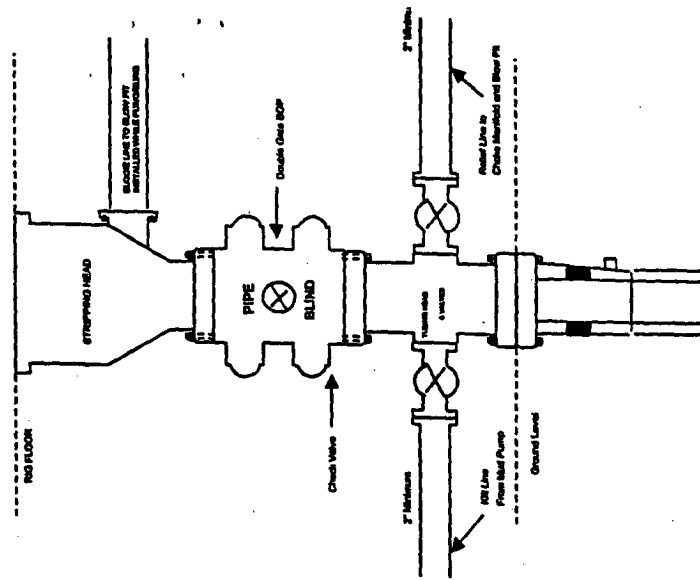


A-A'						
6362'						
6352'						
6342'						



Note: Contractor should call One-Call for location of any marked or unmarked buried pipelines or cables on well pad and/or access road at least two (2) working days prior to construction

Completion/Workover Rig
BOP Configuration
2,000 psi System

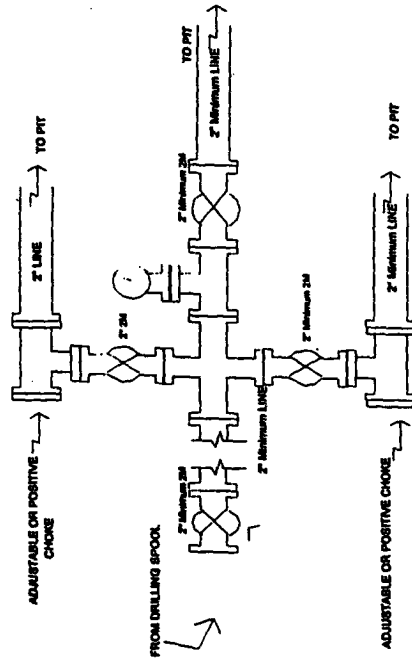


Minimum BOP Installation for all Completion/Workover Operations. 7-1/16" bore, 2000 psi minimum working pressure double gate BOP to be equipped with blind and pipe rams. A stripping head to be installed on the top of the BOP. All BOP equipment is 2000 psi working pressure or greater excluding 500 psi stripping head.

Figure #2

4-20-01

Drilling Rig
Choke Manifold Configuration
2000 psi System

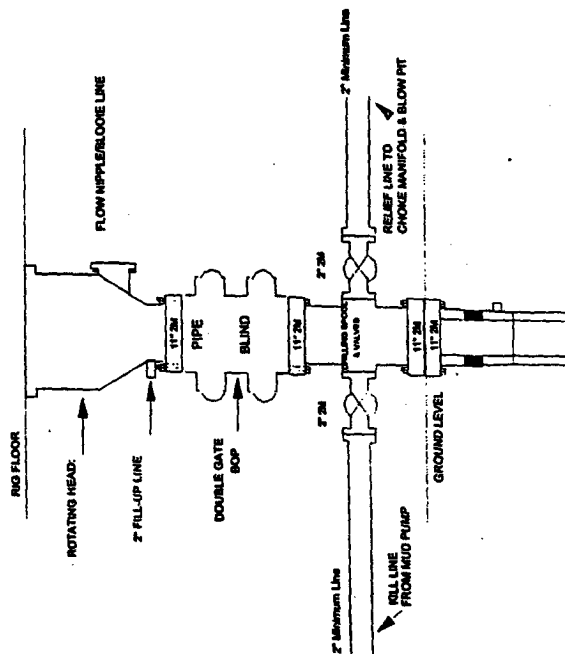


Choke manifold Installation from Surface Casing Point to Total Depth. 2,000psi working pressure equipment with two chokes.

Figure #3

4-20-01

Drilling Rig
2000 psi System



BOP Installation from Surface Casing Point to Total Depth. 11 7/8" Bore 10" Nominal, 2000 psi working pressure double gate BOP to be equipped with blind and pipe rams. A stripping head to be installed on top of the BOP. All BOP equipment is 2000 psi working pressure or greater excluding 500 psi stripping head.

Figure #1

UNITED STATES
DEPARTMENT OF THE INTERIOR
BUREAU OF LAND MANAGEMENT

RECEIVED

Sundry Notices and Reports on Wells

2004 APR 27 PM 5:58

1. Type of Well
GAS

Lease Number
NMNM-04207

070 FARMINGTON, NM

If Indian, All. or
Tribe Name

2. Name of Operator

**BURLINGTON
RESOURCES**

OIL & GAS COMPANY

3. Address & Phone No. of Operator

PO Box 4289, Farmington, NM 87499 (505) 326-9700

4. Location of Well, Footage, Sec., T, R, M

1330' FSL, 1485' FEL, Sec.30, T32N, R6W, NMPM

7. Unit Agreement Name

8. Well Name & Number
Allison Unit #120S

9. API Well No.
30-045-

10. Field and Pool
Basin Fruitland Coal

11. County and State
San Juan Co, NM

12. CHECK APPROPRIATE BOX TO INDICATE NATURE OF NOTICE, REPORT, OTHER DATA

Type of Submission

Type of Action

<input checked="" type="checkbox"/> Notice of Intent	<input type="checkbox"/> Abandonment	<input checked="" type="checkbox"/> Change of Plans
<input type="checkbox"/> Subsequent Report	<input type="checkbox"/> Recompletion	<input type="checkbox"/> New Construction
<input type="checkbox"/> Final Abandonment	<input type="checkbox"/> Plugging Back	<input type="checkbox"/> Non-Routine Fracturing
	<input type="checkbox"/> Casing Repair	<input type="checkbox"/> Water Shut off
	<input type="checkbox"/> Altering Casing	<input type="checkbox"/> Conversion to Injection
	<input type="checkbox"/> Other	

13. Describe Proposed or Completed Operations

The BOP configuration has been revised for the subject well according to the following and attached diagram:

BOP and tests:

Surface to intermediate TD - 11" 2000 psi (minimum) double gate BOP stack (Reference Figure #1). Prior to drilling out surface casing, test BOPE to 600 psi for 30 min.

Intermediate TD to Total Depth - 7 1/6" 2000 psi (minimum) completion BOP stack (Reference Figure #2). Prior to drilling out intermediate casing, test BOPE and casing to 1500 psi for 30 minutes.

From surface to 7" TD - a choke manifold will be installed in accordance with Onshore Order No. 2 (Reference Figure #3). When the cavitation completion rig drills the production hole, the completion rig configuration will be used (Reference Figure #4).

Pipe rams will be actuated at least once each day and blind rams actuated once each trip to test proper functioning. An upper kelly cock valve with handle and drill string safety valves to fit each drill string will be maintained and available on the rig floor.

14. I hereby certify that the foregoing is true and correct.

Signed Tammy Winitz Title Regulatory Specialist Date 04/013/04
fsb

(This space for Federal or State Office use)

APPROVED BY [Signature] Title AFM Date 7-8-04

CONDITION OF APPROVAL, if any:

Title 18 U.S.C. Section 1001, makes it a crime for any person knowingly and willfully to make to any department or agency of the United States any false, fictitious or fraudulent statements or representations as to any matter within its jurisdiction.

NMOCD

BURLINGTON RESOURCES

Figure #4
Cavitation Rig
BOP Configuration
2,000 psi Minimum System

