

District I
1625 N. French Dr., Hobbs, NM 88240
District II
1301 W. Grand Avenue, Artesia, NM 88210
District III
1000 Rio Brazos Road, Aztec, NM 87410
District IV
1220 S. St. Francis Dr., Santa Fe, NM 87505

State of New Mexico
Energy Minerals and Natural Resources

Oil Conservation Division
1220 South St. Francis Dr.
Santa Fe, NM 87505

Form C-101
March 4, 2004

Submit to appropriate District Office
State Lease - 6 Copies
Fee Lease - 5 Copies

☐ AMENDED REPORT

APPLICATION FOR PERMIT TO DRILL, RE-ENTER, DEEPEN, PLUGBACK, OR ADD A ZONE

¹ Operator Name and Address Dugan Production Corporation 709 East Murray Drive Farmington, New Mexico 87401		² OGRID Number 006515
		³ API Number 30 - 045-32492
⁴ Property Code 24405	⁵ Property Name King Com	⁶ Well No. 3

7 Surface Location

UL or lot no. B	Section 11	Township 29N	Range 14W	Lot Idn	Feet from the 790	North/South line North	Feet from the 1975	East/West line East	County San Juan
--------------------	---------------	-----------------	--------------	---------	----------------------	---------------------------	-----------------------	------------------------	--------------------

8 Proposed Bottom Hole Location If Different From Surface

UL or lot no.	Section	Township	Range	Lot Idn	Feet from the	North/South line	Feet from the	East/West line	County
---------------	---------	----------	-------	---------	---------------	------------------	---------------	----------------	--------

⁹ Proposed Pool 1 Harper Hill Fruitland Sand P.C.

¹⁰ Proposed Pool 2

Drilling Pit Location and Other Information

UL or lot no. B	Section 11	Township 29N	Range 14W	Lot Idn	Feet from the 790	North/South line North	Feet from the 1975	East/West line East	County San Juan
Depth to ground water 1255'			Distance from nearest fresh water well More than 2-miles			Distance from nearest surface water 1-mile San Juan River			
¹¹ Work Type Code N		¹² Well Type Code G		¹³ Cable/Rotary R		¹⁴ Lease Type Code P		¹⁵ Ground Level Elevation 5495'	
¹⁶ Multiple No		¹⁷ Proposed Depth 1255'		¹⁸ Formation Fruitland P.C. Sand		¹⁹ Contractor Smith Drilling		²⁰ Spud Date ASAP	

21 Proposed Casing and Cement Program

Hole Size	Casing Size	Casing weight/foot	Setting Depth	Sacks of Cement	Estimated TOC
9-7/8"	7"	20#	120'	70-sx	Surface
6-1/4"	4-1/2"	10.5#	1255.	120-5x	Surface

²² Describe the proposed program. If this application is to DEEPEN or PLUG BACK, give the data on the present productive zone and proposed new productive zone. Describe the blowout prevention program, if any. Use additional sheets if necessary.

A water based gel-mud will be used to drill surface and production casing hole. Standard 2,000 psi BOP will be used to drill production hole. The Fruitland Sand and Pictured Cliffs Sand will be completed from approximately 1075'-1125'.

²³ I hereby certify that the information given above is true and complete to the best of my knowledge and belief. I further certify that the drilling pit will be constructed according to NMOCD guidelines ☐ a general permit ☐ or an (attached) alternative OCD-approved plan ☐.

Signature:

Kurt Fagrelus

Printed name: Kurt Fagrelus

Title: Geologist

E-mail Address: kfagrelus@duganproduction.com

Date: August 2, 2004

Phone: 505-325-1821

OIL CONSERVATION DIVISION

Approved by:

[Signature]

Title: DEPUTY OIL & GAS INSPECTOR, DIST. 4

Approval Date: AUG - 4 2004

Expiration Date: AUG - 4 2005

Conditions of Approval:

Attached ☐

District I
PO Box 1980, Hobbs, NM 88241-1980

District II
PO Drawer DD, Artesia, NM 88211-0719

District III
1000 Rio Brazos Rd., Aztec, NM 87410

District IV
PO Box 2088, Santa Fe, NM 87504-2088

State of New Mexico
Energy, Minerals & Natural Resources Department

OIL CONSERVATION DIVISION
PO Box 2088
Santa Fe, NM 87504-2088

Form C-1C
Revised February 21, 1995
Instructions on back
Submit to Appropriate District Office
State Lease - 4 Copies
Fee Lease - 3 Copies

☐ AMENDED REPORT

WELL LOCATION AND ACREAGE DEDICATION PLAT

*API Number 30-045-32492		*Pool Code 78160	*Pool Name HARPER HILL FRUITLAND SAND PICTURED CLIFFS
*Property Code 24405	*Property Name KING COM		*Well Number 3
*OGRID No. 006515	*Operator Name DUGAN PRODUCTION CORPORATION		*Elevation 5495'

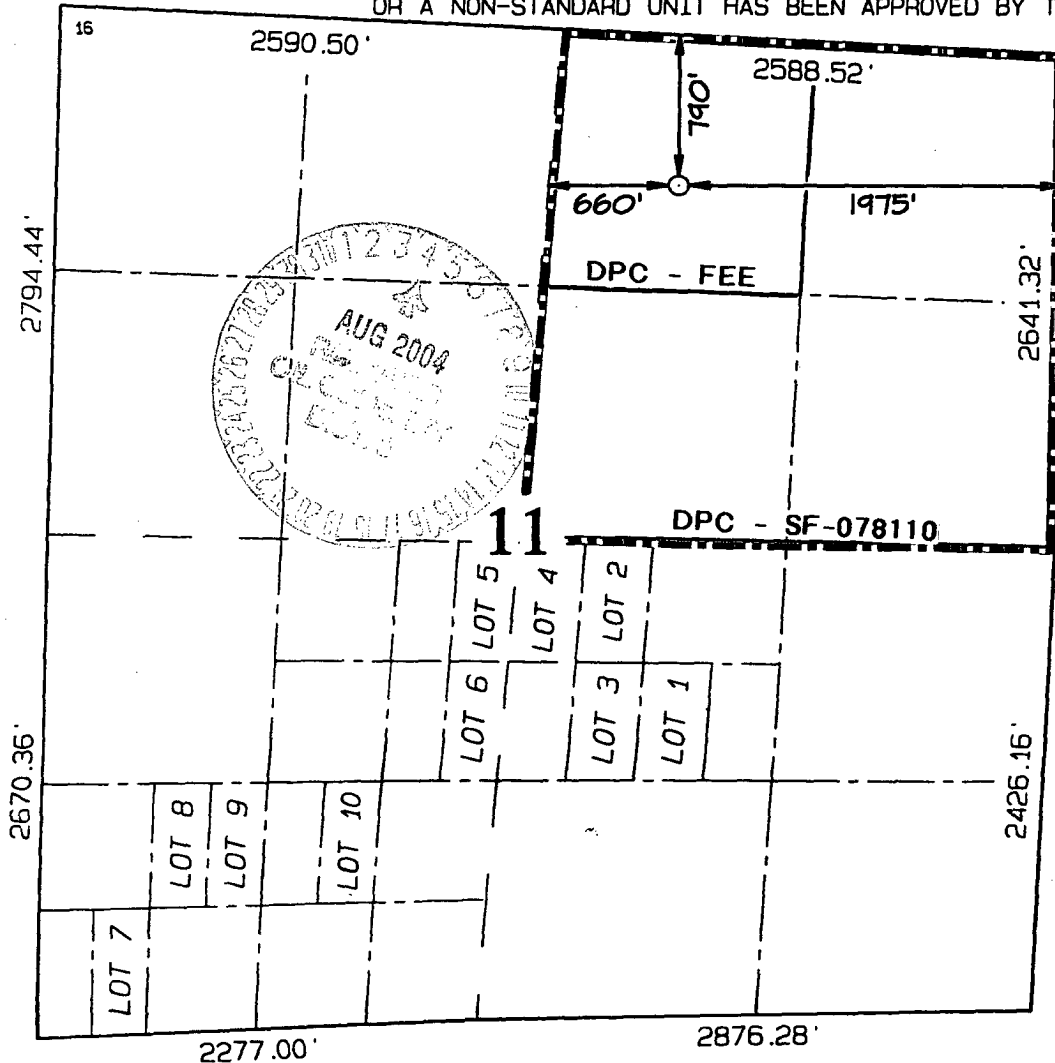
¹⁰ Surface Location

UL or lot no.	Section	Township	Range	Lot Idn	Feet from the	North/South line	Feet from the	East/West line	County
B	11	29N	14W		790	NORTH	1975	EAST	SAN JUAN

¹¹ Bottom Hole Location If Different From Surface

UL or lot no.	Section	Township	Range	Lot Idn	Feet from the	North/South line	Feet from the	East/West line	County
¹² Dedicated Acres 160.0 Acres - (NE/4)					¹³ Joint or Infill	¹⁴ Consolidation Code	¹⁵ Order No.		

NO ALLOWABLE WILL BE ASSIGNED TO THIS COMPLETION UNTIL ALL INTERESTS HAVE BEEN CONSOLIDATED
OR A NON-STANDARD UNIT HAS BEEN APPROVED BY THE DIVISION



¹⁷ OPERATOR CERTIFICATION

I hereby certify that the information contained herein is true and complete to the best of my knowledge and belief

Kurt Fagrelus
Signature

Kurt Fagrelus
Printed Name

Geologist
Title

August 2, 2004
Date

Date

¹⁸ SURVEYOR CERTIFICATION

I hereby certify that the well location shown on this plat was plotted from field notes of actual surveys made by me or under my supervision, and that the same is true and correct to the best of my belief.

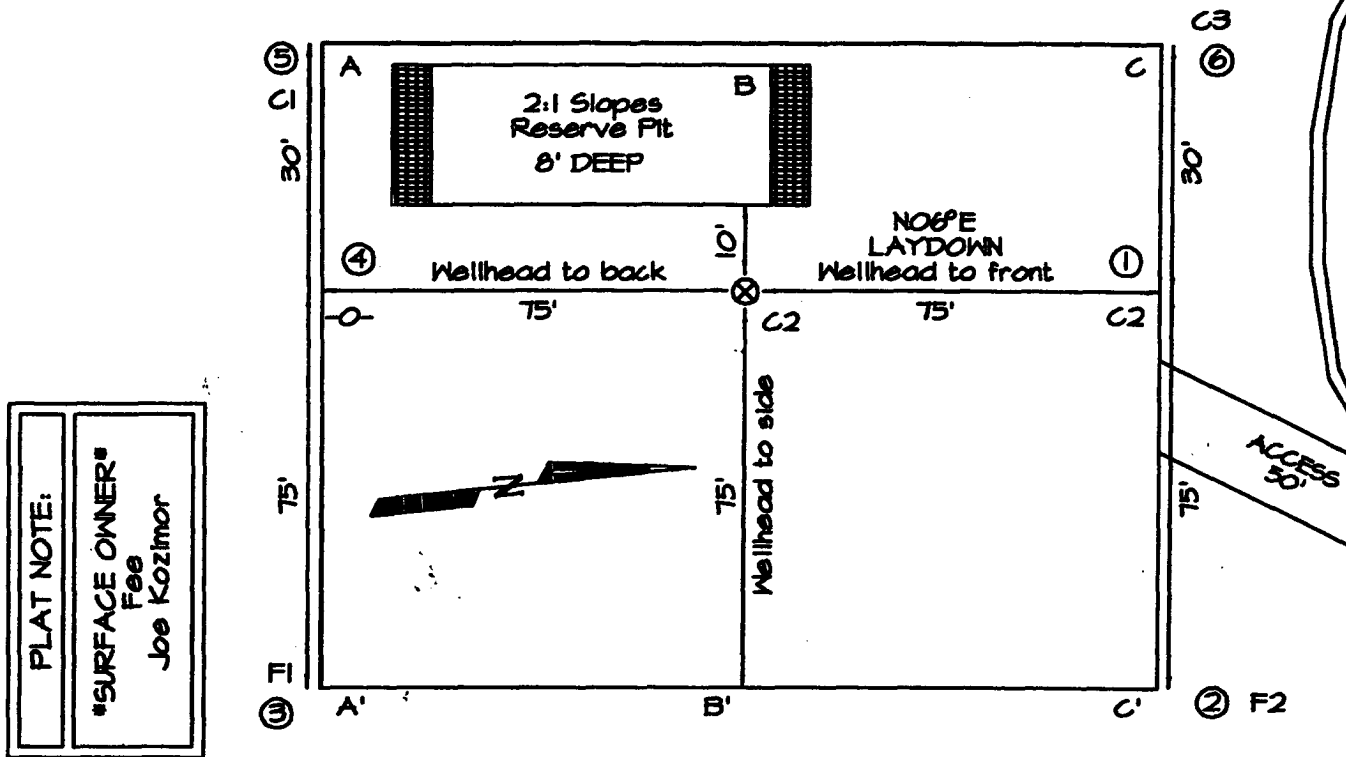
Date of Survey: JULY 12, 2004

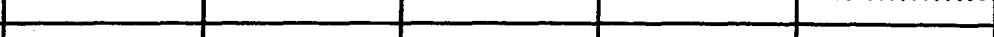
Signature and Seal of Professional Surveyor



JASON C. EDWARDS
Certificate Number 15269

LATITUDE: 36°44'45"
LONGITUDE: 108°16'34"
DATUM: NAD1927



A-A'						
5503'						
5493'						
5483'						

B-B'						
5503'						
5493'						
5483'						

C-C'						
5503'						
5493'						
5483'						

Note: Contractor should call One-Call for location of any marked or unmarked buried pipelines or cables on well pad and/or access road at least two (2) working days prior to construction