

Form 3160-5
(June 1990)

**UNITED STATES
DEPARTMENT OF THE INTERIOR
BUREAU OF LAND MANAGEMENT**

SUNDRY NOTICES AND REPORTS ON WELLS

Do not use this form for proposals to drill or to deepen or reentry to a different reservoir.

Use "APPLICATION FOR PERMIT—" for such proposals

SUBMIT IN TRIPLICATE**1. Type of Well**

☒ Oil ☐ Gas ☐ Other

2. Name of Operator

D.J. Simmons Co.

3. Address and Telephone No.

1009 Ridgeway Place, Suite 200, Farmington NM 87401 (505) 326-3753

4. Location of Well (Footage, Sec., T., R., M., or Survey Description)

1650' FSL x 660' FEL, Section 6, T24N, R4W

FORM APPROVED

Budget Bureau No. 1004-0135

Expires: March 31, 1993

**5. Lease Designation and Serial No.
Contract 111****6. If Indian, Allottee or Tribe Name**

Jicarilla

7. If Unit or CA, Agreement Designation**8. Well Name and No.**

Jicarilla #105

9. API Well No.

30-039-22070

10. Field and Pool, or Exploratory Area

W Lindrith Gallup Dakota

11. County or Parish, State

Rio Arriba County, New Mexico

12. CHECK APPROPRIATE BOX(s) TO INDICATE NATURE OF NOTICE, REPORT, OR OTHER DATA**TYPE OF SUBMISSION**

☒ Notice of Intent

☐ Subsequent Report

☐ Final Abandonment Notice

TYPE OF ACTION

☒ Abandonment

☐ Recompletion

☐ Plugging Back

☐ Casing Repair

☐ Altering Casing

☐ Other _____

☐ Change of Plans

☐ New Construction

☐ Non-Routine Fracturing

☐ Water Shut-Off

☐ Conversion to Injection

☐ Dispose Water

(Note: Report results of multiple

Completion or Recompletion Report and

13. Describe Proposed or Completed Operations (Clearly state all pertinent details, and give pertinent dates, including estimated date of starting any proposed work. If well is directionally drilled, give subsurface locations and measured and true vertical depth for all markers and zones pertinent to this work.)*

D.J. Simmons, Inc. has determined that it is not economic to repair the casing in the above referenced well. We intend to plug and abandon the well as per the attached procedure.

14. I hereby certify that the foregoing is true and correct

Signed Robert R. Griffie

Title Operations Manager

(This space for Federal or State office use)

Approved by [Signature]
Conditions of approval, if any:

Title _____

AFMSS

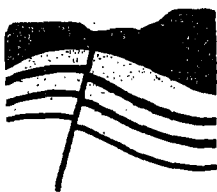
Adjud	<u>amy</u>
Engr	<u>ors</u>
Geol	
Surf	
Appv	

Date: 8/24/04

Date: _____

Title 18 U.S.C. Section 1001, makes it a crime for any person knowingly and willfully to make to any department or agency of the United States any false, fictitious or fraudulent statements or representations as to any matter within its jurisdiction.

***See Instruction on Reverse Side**


DJ SIMMONS, INC.

1009 Ridgeway Place
Suite 200
Farmington,
New Mexico 87401

505-326-3753
505-327-4659 FAX
info@djsimmonsinc.com
www.djsimmonsinc.com

Date: 8/24/2004

Jicarilla H #105
P&A Procedure

See well bore diagram (formation tops on diagram from Arco - inaccurate)

1. Set cement retainer on tubing at 7138'.
2. Plug #1 (Dakota); Pump 35 sks Class 'G' neat into Dakota perforations under retainer. Dump 12 sks on top of retainer.
3. TOH.
4. TIH with 2nd cement retainer and set at 6020'.
5. Plug #2 (Gallup); Pump 75 sks Class 'G' neat into Gallup perforations under retainer. Dump 12 sks on top of retainer.
6. TOH.
7. TIH with 3rd cement retainer and set at 4370'.
8. Plug #3 (Mesa Verde); Pump 25 sks below retainer and dump 12 sks on top of retainer.
9. Pressure test casing above plug #3 to 500 psi.
10. TOH and lay down stinger.
11. TIH open ended to 3720'.
12. Plug #4 (Chacra); Pump 25 sk balanced plug.
13. POOH to 2880'.
14. Plug #5 (Pictured Cliffs); Pump 25 sk balanced plug.
15. POOH to 2685'.
16. Plug #6 (Fruitland Coal, Kirtland, Ojo Alamo); Pump 85 sk balanced plug.
17. TOH.
18. Perforate 2 squeeze holes at 935'.
19. Establish circulation down casing, through squeeze holes, up casing hole annulus, and out Braden head.
20. Plug #7; Pump 450 sks down casing, through squeeze holes, up casing hole annulus and out Braden head. Note: If cement does not circulate out Braden head valve, displace slurry to 885'.
21. WOC. *RUN CBL & CONTACT BLM & OCO for Procedure*
22. Cut off well head and install dry hole marker.
23. Reclaim location.

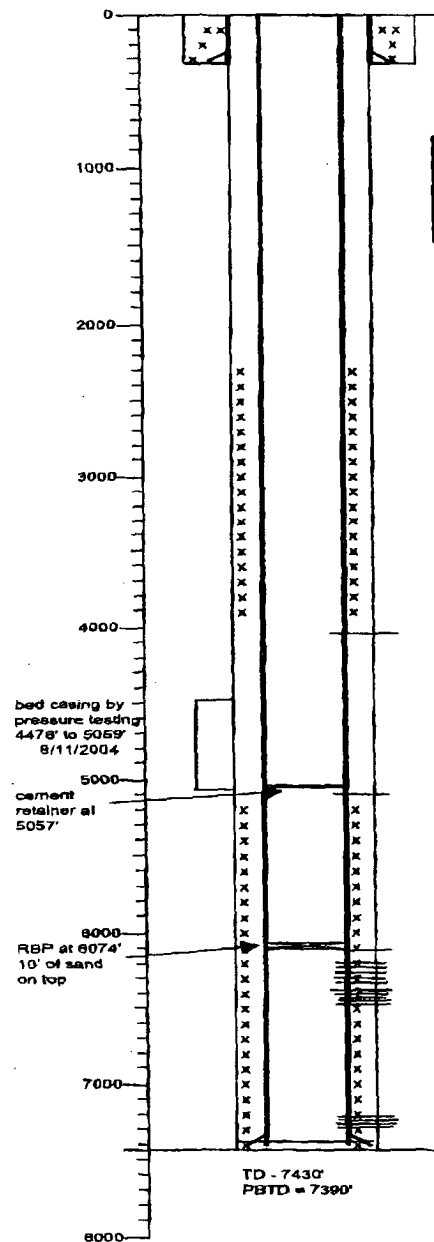
Formation Top data from Steve Hayden (NMOCD)

Mesa Verde - 4470'
Chacra - 3670'
Pictured Cliffs - 2830'
Fruitland Coal - 2635'

Kirtland - 2470'
Ojo Alamo - 2375'
Nacimiento - 885'

Class 'G' neat slurry data: 15.8 ppg, 1.16 cf/sk, 5.1 gals wtr/sk

Elevations: 8798' CL, 8810' RKB



5 1/2", 15.50 and 17 ppi, J55, production casing
 set at 7429' (bottom 1316.51', 33 lbs of casing is 17 ppi).
 Cemented with 650 sks in two stages