

UNITED STATES
DEPARTMENT OF THE INTERIOR
BUREAU OF LAND MANAGEMENT

APPLICATION FOR PERMIT TO DRILL, DEEPEN, OR PLUG BACK

1a. Type of Work DRILL	5. Lease Number NMSF-080713 Unit Reporting Number
1b. Type of Well GAS	6. If Indian, All. or Tribe
2. Operator BURLINGTON RESOURCES Oil & Gas Company	7. Unit Agreement Name San Juan 30-6 Unit
3. Address & Phone No. of Operator PO Box 4289, Farmington, NM 87499 (505) 326-9700	8. Farm or Lease Name San Juan 30-6 Unit 9. Well Number #445S
4. Location of Well 880' FNL, 2215' FWL Latitude 36° 49.0461'N, Longitude 107° 24.9020'W	10. Field, Pool, Wildcat Basin Fruitland Coal 11. Sec., Twn, Rge, Mer. (NMPM) Sec. 13, T30N, R06W API # 30-039- 27793
14. Distance in Miles from Nearest Town 45.1 miles to Blanco Post Office	12. County Rio Arriba 13. State NM
15. Distance from Proposed Location to Nearest Property or Lease Line 880'	
16. Acres in Lease	17. Acres Assigned to Well 320 W/2
18. Distance from Proposed Location to Nearest Well, Drlg, Compl, or Applied for on this Lease 896'	
19. Proposed Depth 3343'	20. Rotary or Cable Tools Rotary
21. Elevations (DF, FT, GR, Etc.) 6421 GR	22. Approx. Date Work will Start
23. Proposed Casing and Cementing Program See Operations Plan attached	
24. Authorized by: <u>Nancy Oltmanns</u> Regulatory Specialist	<u>1-12-04</u> Date

PERMIT NO.

APPROVAL DATE

APPROVED BY

TITLE

DATE

Archaeological Report attached

Threatened and Endangered Species Report attached

NOTE: This format is issued in lieu of U.S. BLM Form 3160-3

Title 18 U.S.C. Section 1001, makes it a crime for any person knowingly and willfully to make to any department or agency of the United States any false, fictitious or fraudulent statements or presentations as to any matter within its jurisdiction.

NO HPA NOTIFICATION REQUIRED UNDER ORDER R-8768F.

This action is subject to technical and procedural review pursuant to 43 CFR 3165.3 and appeal pursuant to 43 CFR 3165.4

NMOC

DRILLING OPERATIONS AUTHORIZED ARE
SUBJECT TO COMPLIANCE WITH ATTACHED
"GENERAL REQUIREMENTS".

DISTRICT I
1626 N. French Dr., Hobbs, N.M. 88240

State of New Mexico
Energy, Minerals & Natural Resources Department

Form C-102
Revised August 15, 2000

DISTRICT II
811 South First, Artesia, N.M. 88210

Submit to Appropriate District Office
State Lease - 4 Copies
Fee Lease - 3 Copies

DISTRICT III
1000 Rio Brazos Rd., Aztec, N.M. 87410

OIL CONSERVATION DIVISION

2040 South Pacheco
Santa Fe, NM 87505

DISTRICT IV
2040 South Pacheco, Santa Fe, NM 87505

☐ AMENDED REPORT

WELL LOCATION AND ACREAGE DEDICATION PLAT

¹ API Number 30-039- 27793	² Pool Code 71629	³ Pool Name Basin Fruitland Coal
⁴ Property Code 7469	⁵ Property Name SAN JUAN 30-6 UNIT	⁶ Well Number 445S
⁷ OGRID No. 14538	⁸ Operator Name BURLINGTON RESOURCES OIL AND GAS COMPANY LP	⁹ Elevation 6421'

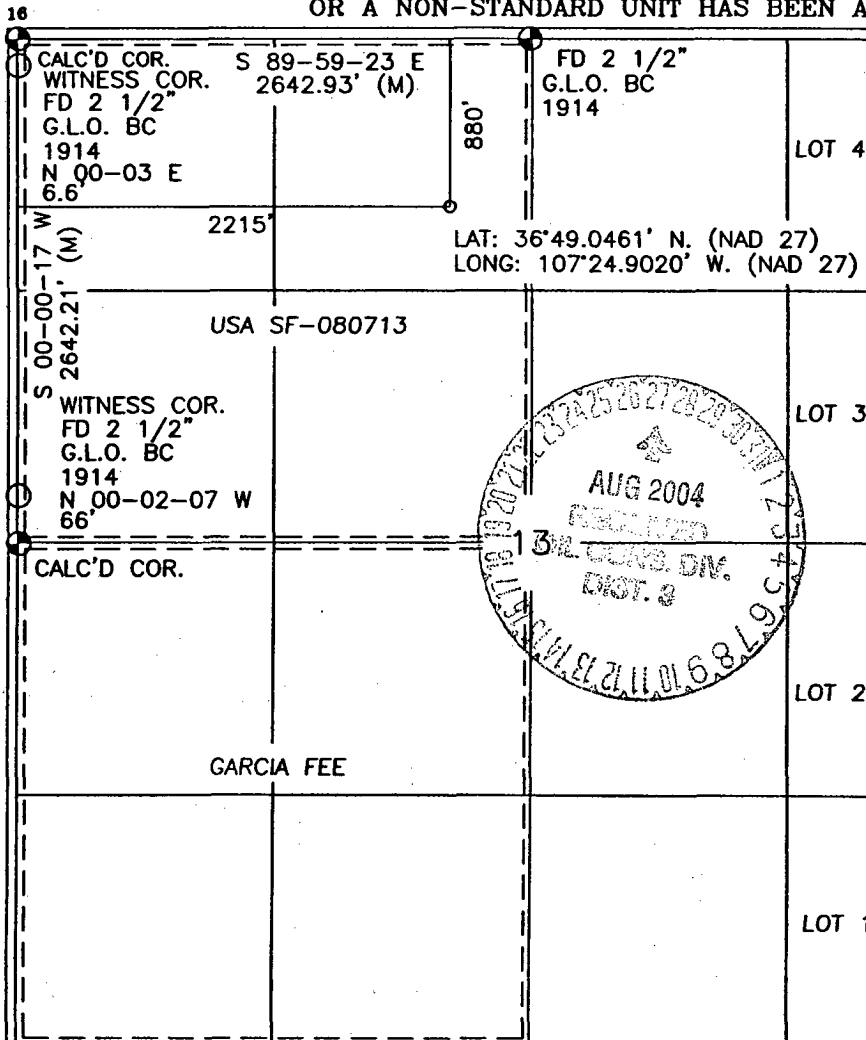
¹⁰ Surface Location

UL or lot no.	Section	Township	Range	Lot Idn	Feet from the	North/South line	Feet from the	East/West line	County
C	13	30-N	6-W		880'	NORTH	2215'	WEST	RIO ARRIBA

¹¹ Bottom Hole Location If Different From Surface

UL or lot no.	Section	Township	Range	Lot Idn	Feet from the	North/South line	Feet from the	East/West line	County
¹² Dedicated Acres FTC W/320			¹³ Joint or Infill		¹⁴ Consolidation Code		¹⁵ Order No.		

NO ALLOWABLE WILL BE ASSIGNED TO THIS COMPLETION UNTIL ALL INTERESTS HAVE BEEN CONSOLIDATED
OR A NON-STANDARD UNIT HAS BEEN APPROVED BY THE DIVISION



17 OPERATOR CERTIFICATION

I hereby certify that the information contained herein is true and complete to the best of my knowledge and belief

Nancy Olmanns
Signature
Nancy Olmanns
Printed Name
Senior Staff Specialist
Title
1-12-04
Date

18 SURVEYOR CERTIFICATION

I hereby certify that the well location shown on this plat was plotted from field notes of actual surveys made by me or under my supervision, and that the same is true and correct to the best of my belief.

DAVID A. JOHNSON
Date of Survey
Signature and Seal of Professional Surveyor
14827
Certificate Number

Submit 3 Copies To Appropriate District Office
District I
1625 N. French Dr., Hobbs, NM 88240
District II
1301 W. Grand Ave., Artesia, NM 88210
District III
1000 Rio Brazos Rd., Aztec, NM 87410
District IV
1220 S. St. Francis Dr., Santa Fe, NM 87505

State of New Mexico
Energy, Minerals and Natural Resources

Form C-103
March 4, 2004

OIL CONSERVATION DIVISION
1220 South St. Francis Dr.
Santa Fe, NM 87505

WELL API NO. 30-039-
5. Indicate Type of Lease STATE <input type="checkbox"/> FEE <input type="checkbox"/>
6. State Oil & Gas Lease No. USA SF-080713
7. Lease Name or Unit Agreement Name San Juan 30-6 Unit
8. Well Number 445S
9. OGRID Number 14538
10. Pool name or Wildcat Basin Fruitland Coal

11. Elevation (Show whether DR, RKB, RT, GR, etc.)

Pit or Below-grade Tank Application (For pit or below-grade tank closures, a form C-144 must be attached)

Pit Location: UL C Sect 13 Twp 30N Rng 6W Pit type New Depth to Groundwater <50' Distance from nearest fresh water well >1000' Distance from nearest surface water >1000' Below-grade Tank Location UL Sect Twp Rng ;
feet from the line and feet from the line

SUNDRY NOTICES AND REPORTS ON WELLS
(DO NOT USE THIS FORM FOR PROPOSALS TO DRILL OR TO DEEPEN OR PLUG BACK TO A DIFFERENT RESERVOIR. USE "APPLICATION FOR PERMIT" (FORM C-101) FOR SUCH PROPOSALS.)

1. Type of Well:
Oil Well ☐ Gas Well ☒ Other

2. Name of Operator
Burlington Resources Oil & Gas Company LP

3. Address of Operator
3401 E. 30th Street, Farmington, NM 87402

4. Well Location
Unit Letter C : 880 feet from the North line and 2215 feet from the West line
Section 13 Township 30N Range 6W NMPM Rio Arriba County, NM

11. Elevation (Show whether DR, RKB, RT, GR, etc.)

Pit or Below-grade Tank Application (For pit or below-grade tank closures, a form C-144 must be attached)

Pit Location: UL C Sect 13 Twp 30N Rng 6W Pit type New Depth to Groundwater <50' Distance from nearest fresh water well >1000' Distance from nearest surface water >1000' Below-grade Tank Location UL Sect Twp Rng ;
feet from the line and feet from the line

12. Check Appropriate Box to Indicate Nature of Notice, Report or Other Data

NOTICE OF INTENTION TO:

PERFORM REMEDIAL WORK ☐ PLUG AND ABANDON ☐
TEMPORARILY ABANDON ☐ CHANGE PLANS ☐
PULL OR ALTER CASING ☐ MULTIPLE COMPLETION ☐
OTHER: New Drill Pit ☒

SUBSEQUENT REPORT OF:

REMEDIAL WORK ☐ ALTERING CASING ☐
COMMENCE DRILLING OPNS. ☐ PLUG AND ABANDONMENT ☐
CASING TEST AND CEMENT JOB ☐
OTHER: ☐

13. Describe proposed or completed operations. (Clearly state all pertinent details, and give pertinent dates, including estimated date of starting any proposed work). SEE RULE 1103. For Multiple Completions: Attach wellbore diagram of proposed completion or recompletion.

Burlington Resources proposes to construct a new drill pit. The new drill pit will be a lined pit as detailed in Burlington's general pit construction plan dated April 26, 2004 on file at the NMOCD office.

I hereby certify that the information above is true and complete to the best of my knowledge and belief. I further certify that any pit or below-grade tank has been/will be constructed or closed according to NMOCD guidelines ☐, a general permit ☒ or an (attached) alternative OCD-approved plan ☐.

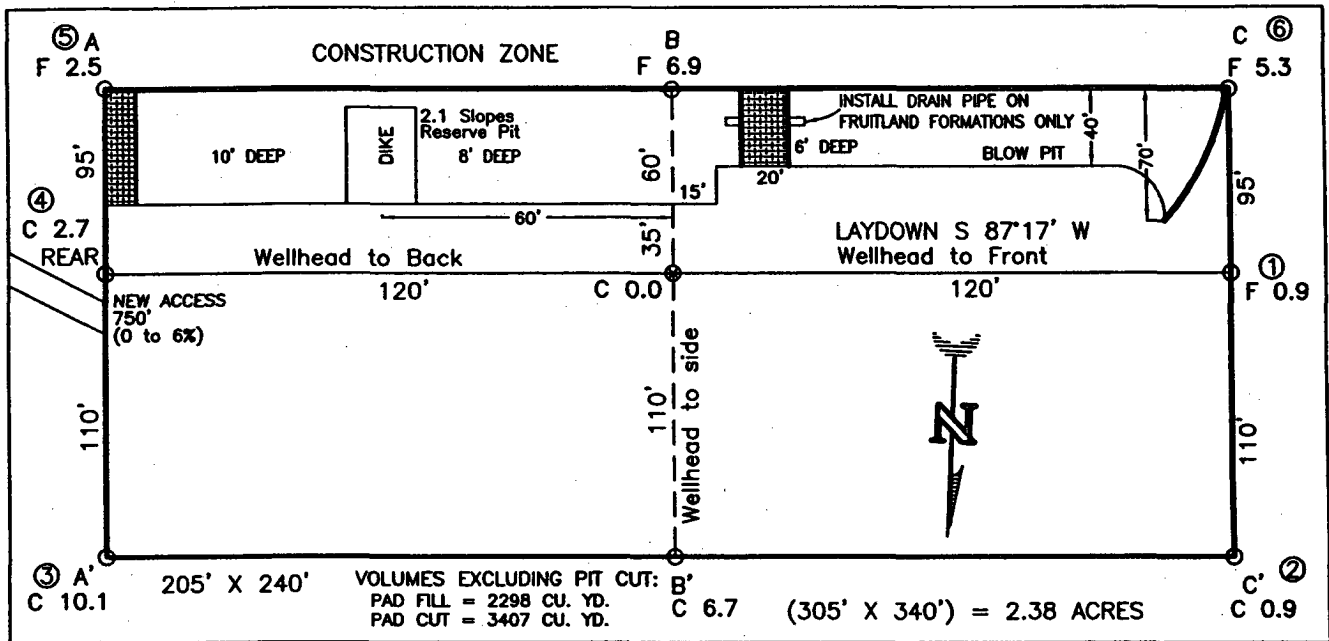
SIGNATURE Cassady Harraden TITLE Regulatory Specialist DATE 5/27/04

Type or print name Cassady Harraden E-mail address: charraden@br-inc.com Telephone No. 326-9700

(This space for State use)

APPROVED BY [Signature] TITLE Regulatory Specialist DATE AUG 27 2004
Conditions of approval, if any:

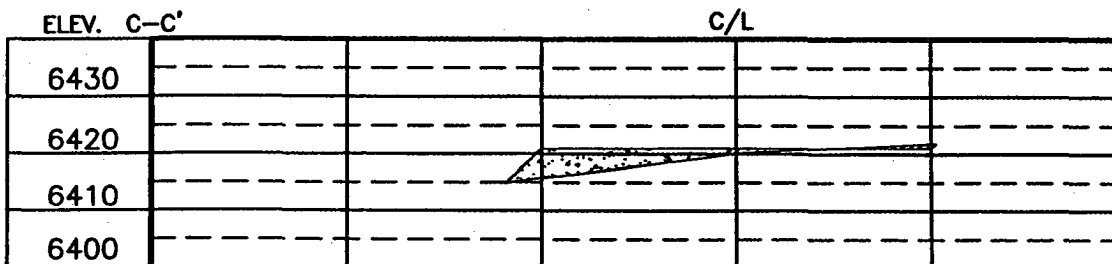
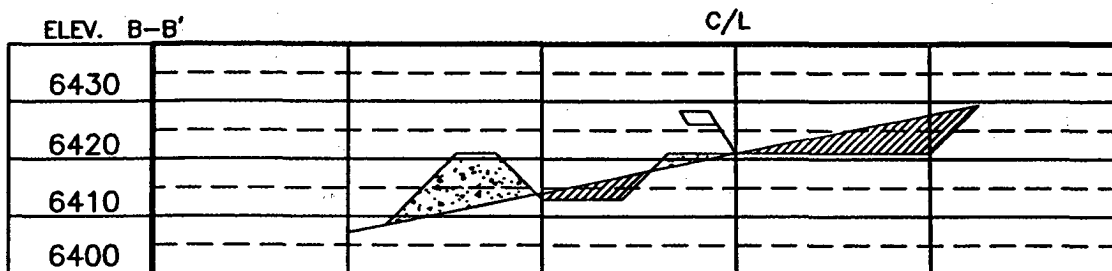
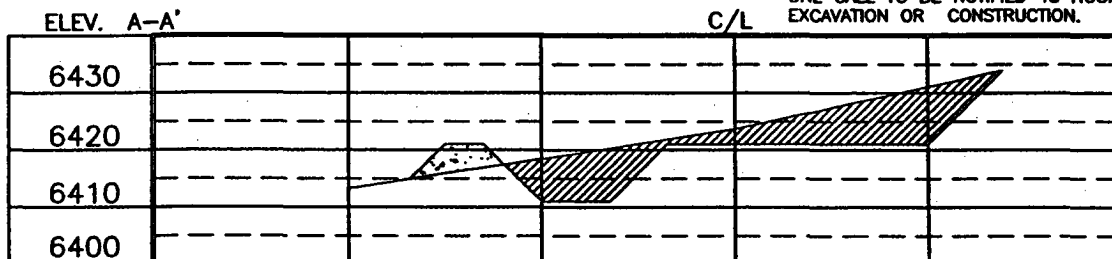
BURLINGTON RESOURCES OIL & GAS COMPANY LP
SAN JUAN 30-6 UNIT No. 445S, 880 FNL 2215 FWL
SECTION 13, T-30-N, R-6-W, N.M.P.M., RIO ARriba COUNTY, NEW MEXICO
GROUND ELEVATION: 6421', DATE: NOVEMBER 3, 2003



RESERVE PIT DIKE: TO BE 8' ABOVE DEEP SIDE (OVERFLOW - 3' WIDE AND 1' ABOVE SHALLOW SIDE).
 BLOW PIT: OVERFLOW PIPE HALFWAY BETWEEN TOP AND BOTTOM AND TO EXTEND OVER PLASTIC LINER AND INTO BLOW PIT.

NOTE:

DAGGETT ENTERPRISES, INC. IS NOT LIABLE FOR UNDERGROUND UTILITIES OR PIPELINES. NEW MEXICO ONE CALL TO BE NOTIFIED 48 HOURS PRIOR TO EXCAVATION OR CONSTRUCTION.



NOTE: CONTRACTOR SHOULD CALL ONE-CALL FOR LOCATION OF ANY MARKED OR UNMARKED BURIED PIPELINES OR CABLES ON WELL PAD AND OR ACCESS ROAD AT LEAST TWO (2) WORKING DAYS PRIOR TO CONSTRUCTION.

DRAWN BY: A.G.

ROW#: BR507

CADFILE: BR507CF8

DATE: 11/10/03

Daggett Enterprises, Inc.
 Surveying and Oil Field Services
 P. O. Box 15088 Farmington, NM 87401
 Phone (505) 326-1772 Fax (505) 326-6019

OPERATIONS PLAN

Well Name: San Juan 30-6 Unit # 445S
Location: 880' FNL, 2215' FWL Section 13, T-30-N, R-06-W
Latitude 36° 49.0461'N, Longitude 107° 24.9020'W
Rio Arriba, NM
Formation: Basin Fruitland Coal
Elevation: 6421' GR

Formation:	Top	Bottom	Contents
Surface	San Jose	2485'	
Ojo Alamo	2485'	2586'	aquifer
Kirtland	2586'	2921'	
Fruitland	2921'	3114'	
Intermediate TD	3064'		
Fruitland Coal	3114'	3333'	gas
B/Basal Coal	3333'	3334'	gas
Pictured Cliffs	3334'		
Total Depth	3418'		

Logging Program: GR/Density 7" to 3418'

Mudlog: from 7" to 3418'

Coring Program: none

Mud Program:

Interval	Type	Weight	Vis.	Fluid Loss
0- 120'	Spud Mud/Air/Air Mist	8.4-9.0	40-50	no control
120-3064'	Non-dispersed	8.4-9.0	30-60	no control
3064-3418'	Air/Mist			

Casing Program (as listed, the equivalent, or better):

Hole Size	Depth Interval	Csg. Size	Wt.	Grade
12 1/4"	0' - 120'	9 5/8"	32.3#	H-40
8 3/4"	0' - 3064'	7"	20.0#	J-55
6 1/4"	3064' - 3418'	open hole		

Alternate Casing Program (as listed, the equivalent, or better):

Hole Size	Depth Interval	Csg. Size	Wt.	Grade
12 1/4"	0' - 120'	9 5/8"	32.3#	H-40
8 3/4"	0' - 3064'	7"	20.0#	J-55
6 1/4"	3024' - 3418'	5 1/2"	15.5#	J-55

Tubing Program:

0' - 3418'	2 3/8"	4.7#	J-55
------------	--------	------	------

Float Equipment: 9 5/8" surface casing - saw tooth guide shoe. Centralizers will be run in accordance with Onshore Order #2.

7" intermediate casing - guide shoe and self-fill float collar. Standard centralizers run every other joint above shoe. Two turbolizing type centralizers - one below and one into the base of the Ojo Alamo @ 2586'. Standard centralizers thereafter every fourth joint up to the base of the surface pipe.

Wellhead Equipment: 9 5/8" x 7" x 2 3/8" x 11" 2000 psi xmas tree assembly.

Cementing:

9 5/8" surface casing -

Pre-Set Drilled Cement with 23 sx Type I, II cement with 20% flyash mixed at 14.5 ppg, 1.61 cu ft per sack yield. (37 cu ft of slurry, bring cement to surface) Wait on cement for 24 hours for pre-set holes before pressure testing or drilling out from under surface.

Conventionally Drilled

Cement with 88 sx Type III cement with 0.25 pps Celloflake, 3% CaCl. (113 cu ft of slurry, 200% excess, bring cement to surface) Wait on cement for 8 hrs for conventionally set holes before pressure testing or drilling out from under surface.

WOC until cement establishes 250 psi compressive strength prior to NU of BOPE.

7" intermediate casing - lead w/265 sacks Premium Lite with 3% calcium chloride, 5 pps LCM-1, and 1/4#/sack flocele, 0.4% FL-52, & 0.4% SMS. Tail with 90 sacks Type III cmt with 1% calcium chloride, 1/4#/sack flocele and 0.2% FL-52 (691 cu.ft., 50% excess to circulate to surface).

5 1/2" liner - will not be cemented if run.

Note: If open hole logs are run, cement volumes will be based on 25% excess over caliper volumes.

BOP and tests:

Surface to intermediate TD - 11" 2000 psi (minimum) double gate BOP stack (Reference Figure #1). Prior to drilling out surface casing, test BOPE to 600 psi for 30 min.

Intermediate TD to Total Depth - 7 1/6" 2000 psi (minimum) completion BOP stack (Reference Figure #2/4) Prior to drilling out intermediate casing, test BOPE and casing to 1500 psi for 30 minutes.

From surface to 7" TD - a choke manifold will be installed in accordance with Onshore Order No. 2 (Reference Figure #3). When the cavitation completion rig drills the production hole, the completion rig configuration will be used (Reference Figure #4).

Pipe rams will be actuated at least once each day and blind rams actuated once each trip to test proper functioning. An upper kelly cock valve with handle and drill string safety valves to fit each drill string will be maintained and available on the rig floor.

Additional information:

- * The Fruitland Coal formation will be completed.
- * Anticipated pore pressure for the Fruitland is less than 500 psi.
- * This gas is dedicated.
- * The west half of Section 13 is dedicated to the Fruitland Coal.

Date:

4-21-04

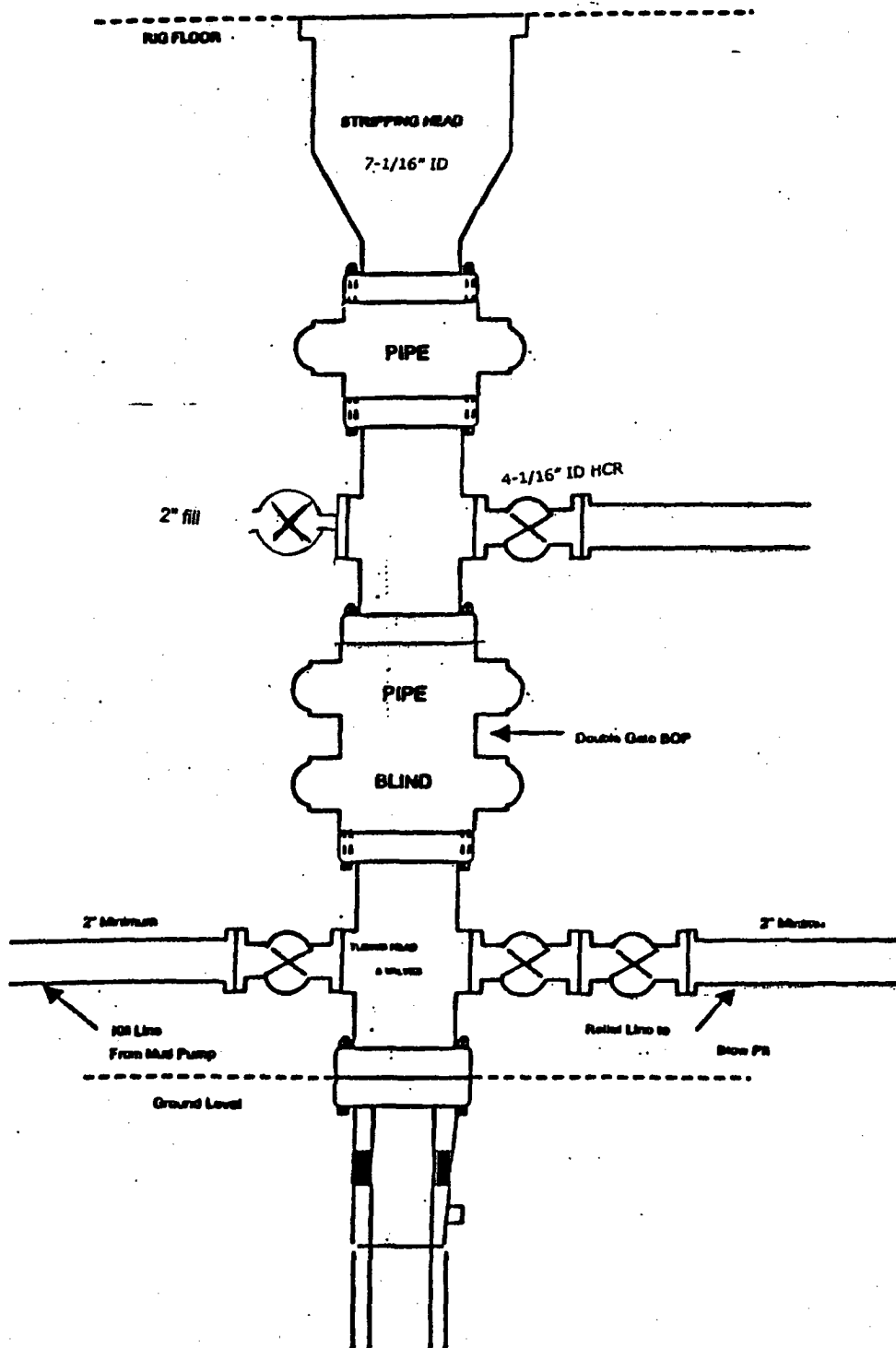
Drilling Engineer:

James Mcclathy

BURLINGTON RESOURCES

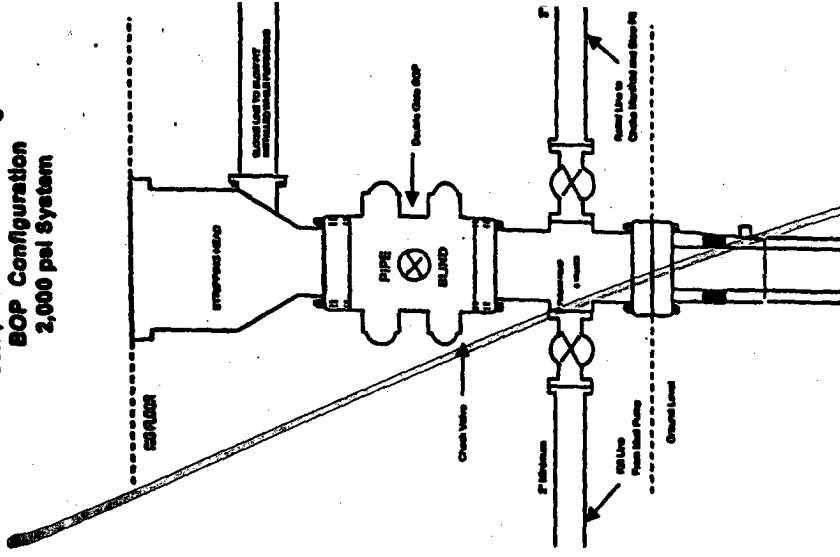
FIGURE #4

Cavitation Rig
BOP Configuration
2,000 psi Minimum System



BURLINGTON RESOURCES

**Completion/Workover Rig
BOP Configuration
2,000 psi System**

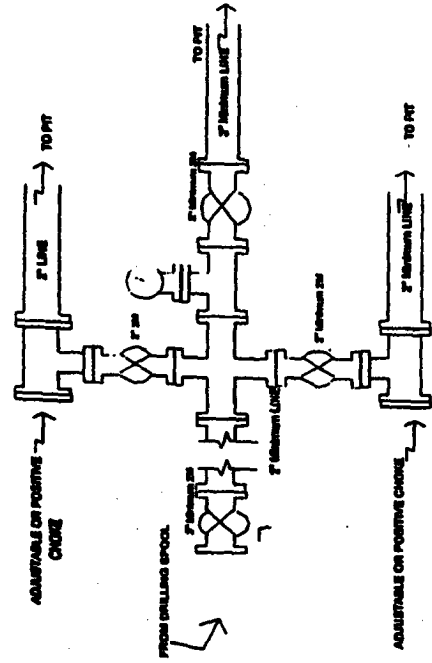


Minimum BOP installation for all Completion/Workover Operations. 7-1/16" bore, 2000 psi minimum working pressure double gate BOP to be equipped with blind and pipe rams. A stripping head to be installed on the top of the BOP. All BOP equipment is 2000 psi working pressure or greater excluding 500 psi stripping head.

Figure #2

BURLINGTON RESOURCES

**Drilling Rig
Choke Manifold Configuration
2000 psi System**

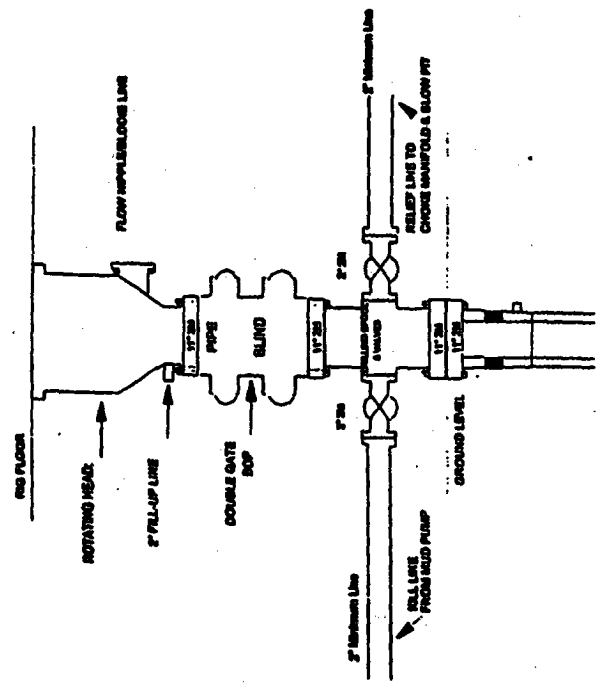


Choke manifold installation from Surface Casing Point to Total Depth. 2,000psi working pressure equipment with two chokes.

Figure #3

Burlington Resources

**Drilling Rig
2000 psi System**



BOP installation from Surface Casing Point to Total Depth. 11" Bore 10" Nominal, 2000 psi working pressure double gate BOP to be equipped with blind rams and pipe rams. A 500 psi rotating head on top of ram preventers. All BOP equipment is 2,000 psi working pressure

Figure #1

4-20-01

4-20-01