

UNITED STATES  
DEPARTMENT OF THE INTERIOR  
BUREAU OF LAND MANAGEMENT

APPLICATION FOR PERMIT TO DRILL OR REENTER

FORM APPROVED

OMB No. 1004-0136

Expires November 30, 2000

5. Lease Designation and Serial No.

SF-079364

6. If Indian, Allottee or Tribe Name

7. If Unit or CA, Agreement, Name and No.

RINCON UNIT NMNM 78406D

8. Lease Name and Well No.

RINCON UNIT #419

9. API Well No.

30039 27797

10. Field and Pool, or Exploratory

Blanco MV & Basin DK

11. Sec., T., R., M., or Blk. and Survey or Area

Sec 29, T-27-N, R-06-W

12. County or Parish,

Rio Arriba

13. State

New Mexico

17. Spacing Unit dedicated to this well

South 320 acres

1a. Type of Work

☒ DRILL

☐ REENTER

1b. Type of Well:

☐ Oil Well

☒ Gas Well

☐ Other

☐ Single Zone

☒ Multiple Zone

2. Name of Operator

Pure Resources, LP

NM OGRID # 189071

3a. Address

c/o Mike Pippin, LLC

3b. Phone Number

3104 N. Sullivan Ave., Farmington, NM 87401

(505) 327-4573

4. Location of Well (Footage, Sec., T. R., M., or Survey Description)

At surface: Unit Letter I, 590' FEL, 2260' FSL

At proposed prod. Zone:

14. Distance in miles and direction from nearest town or post office\*

35 Miles Southeast of Blanco

15. Distance from proposed\*

location to nearest 590'

property or lease line, ft.

(Also to nearest drlg. Unit line, if any)

16. No of Acres in lease

2605.33

19. Proposed Depth

7760'

18. Distance from proposed\*

location to nearest well 1244'

21. Elevation (Show whether DF, KDB, RT, GL, etc.)

6706' Ground Level

22. Approximate date work will start\*

11/18/2004

23. Estimated duration

30 days

24. Attachments

The following, completed in accordance with the requirements of Onshore Oil and Gas Order No. 1, shall be attached to this form:

1. Well plat certified by a registered surveyor.

2. A Drilling Plan

3. A Surface Use Plan (if the location is on National Forest System Lands, the SUPO shall be filed with the appropriate Forest Service Office.

4. Bond to cover the operations unless covered by an existing bond on file (see item 20 above).

5. Operator certification.

6. Such other site specific information and/or plans as may be required by the authorized officer

Size of Hole	Grade, Size of Casing	Weight per Foot	Setting Depth	Quantity of Cement
12-1/4"	9-5/8" H-40	32.3#	350'	158 Sxs, 220 ft3 - 100% Excess
8-3/4"	7" K-55	20#	3000'	337 Sxs, 654 ft3 - 45% Excess
6-1/4"	4-1/2" I-80	11.6#	7760'	588 Sxs, 1217 ft3 - 45% Excess

The on-site inspection was on 6/7/04 by Brice Barlan

Archy is by DCA

EA is by Permits West

SEE ATTACHED APD INFORMATION

Latitude: 36 Deg, 32 Min, 39 Sec N  
Longitude: 107 Deg, 29 Min, 02 Sec W

25. Signature

*Mike Pippin*

Name(Printed/Typed)

Mike Pippin

Date

6/15/2004

Title

Agent - Petroleum Engineer

Approved by (Signature)

*[Signature]*  
AFM

Name(Printed/Typed)

Office FFO

Date

9-9-04

Application approval does not warrant or certify the applicant holds legal or equitable title to those rights in the subject lease which would entitle the applicant to conduct operations thereon.

Conditions of approval, if any, are attached.

Title 18 U.S.C. Section 1001 and Title 43 U.S.C. Section 1212, make it a crime for any person knowingly and willfully to make to any department or agency of the United States any false, fictitious, or fraudulent statements or representations as to any matter within its jurisdiction.

\*(Instructions on reverse)

This action is subject to technical and procedural review pursuant to 43 CFR 3165.3 and 43 CFR 3165.4

HOLD 6104 FOR NSL in MV.

NMOCD

DRILLING OPERATIONS AUTHORIZED ARE SUBJECT TO COMPLIANCE WITH ATTACHED "GENERAL REQUIREMENTS".

DISTRICT I  
1625 N. French Dr., Hobbs, N.M. 88240

DISTRICT II  
811 South First, Artesia, N.M. 86210

DISTRICT III  
1000 Rio Brazos Rd., Aztec, N.M. 87410

DISTRICT IV  
2040 South Pacheco, Santa Fe, NM 87505

State of New Mexico  
Energy, Minerals & Natural Resources Department

OIL CONSERVATION DIVISION  
2040 South Pacheco  
Santa Fe, NM 87505

Form C-102  
Revised August 15, 2000

Submit to Appropriate District Office  
State Lease - 4 Copies  
Fee Lease - 3 Copies

☐ AMENDED REPORT

WELL LOCATION AND ACREAGE DEDICATION PLAT

*API Number 30-039-27797		*Pool Code 72319 71599	*Pool Name BLANCO MV & BASIN DK
*Property Code 26629	*Property Name RINCON UNIT		*Well Number 419
*OGRID No. 189071	*Operator Name PURE RESOURCES		*Elevation 6706'

<sup>10</sup> Surface Location

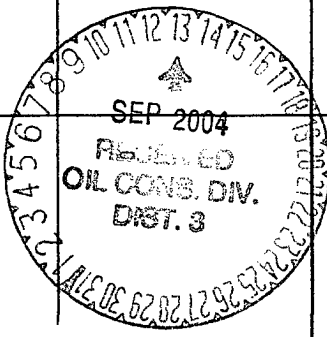
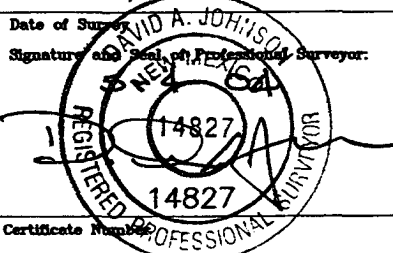
UL or lot no.	Section	Township	Range	Lot Idn	Feet from the	North/South line	Feet from the	East/West line	County
1	29	27-N	6-W		2260'	SOUTH	590'	EAST	RIO ARriba

<sup>11</sup> Bottom Hole Location If Different From Surface

UL or lot no.	Section	Township	Range	Lot Idn	Feet from the	North/South line	Feet from the	East/West line	County
*Dedicated Acres 320 S/2		*Joint or Infill I		*Consolidation Code		*Order No.			

NO ALLOWABLE WILL BE ASSIGNED TO THIS COMPLETION UNTIL ALL INTERESTS HAVE BEEN CONSOLIDATED  
OR A NON-STANDARD UNIT HAS BEEN APPROVED BY THE DIVISION

18

2004 JUN 12 PM 1 59 RECEIVED 070 FARMINGTON NM	 RINCON UNIT No. 259 FD 3 1/4" B.L.M. BC 1955	<b>17 OPERATOR CERTIFICATION</b> I hereby certify that the information contained herein is true and complete to the best of my knowledge and belief. <u>Mike Pippin</u> Signature <u>MIKE PIPPIN</u> Printed Name <u>AGENT - PETR. ENGR.</u> Title <u>6-15-04</u> Date
29 LAT. 36°32'39"N (NAD 83) LONG. 107°29'02"W (NAD 83) FD 3 1/4" B.L.M. BC 1955 S 87°08'26 W 2642.1' (M) FD 3 1/4" B.L.M. BC 1955		<b>18 SURVEYOR CERTIFICATION</b> I hereby certify that the well location shown on this plat was plotted from field notes of actual surveys made by me or under my supervision, and that the same is true and correct to the best of my belief. APRIL 22, 2004 Date of Survey <u>DAVID A. JOHNSON</u> Signature and Seal of Professionally Registered Surveyor.  Certificate Number

Submit 3 Copies To Appropriate District  
Office  
District I  
1625 N. French Dr., Hobbs, NM 88240  
District II  
1301 W. Grand Ave., Artesia, NM 88210  
District III  
1000 Rio Brazos Rd., Aztec, NM 87410  
District IV  
1220 S. St. Francis Dr., Santa Fe, NM  
87505

State of New Mexico  
Energy, Minerals and Natural Resources

Form C-103  
March 4, 2004

OIL CONSERVATION DIVISION  
1220 South St. Francis Dr.  
Santa Fe, NM 87505

WELL API NO.

5. Indicate Type of Lease: **FEDERAL**  
STATE ☐ FEE ☐

6. State Oil & Gas Lease No.  
**FEDERAL**: SF-079364

7. Lease Name or Unit Agreement Name  
RINCON UNIT

8. Well Number  
#419

9. OGRID Number 189071

10. Pool name or Wildcat  
Blanco MV & Basin DK

SUNDRY NOTICES AND REPORTS ON WELLS

(DO NOT USE THIS FORM FOR PROPOSALS TO DRILL OR TO DEEPEN OR PLUG BACK TO A  
DIFFERENT RESERVOIR. USE "APPLICATION FOR PERMIT" (FORM C-101) FOR SUCH  
PROPOSALS.)

1. Type of Well:  
Oil Well ☐ Gas Well ☒ Other

2. Name of Operator  
PURE RESOURCES LP

3. Address of Operator c/o Agent, Mike Pippin LLC  
3104 N. Sullivan, Farmington, NM 87401 505-327-4573

4. Well Location

Unit Letter I: 590 feet from the East line and 2260 feet from the South line

Section 29 Township 27N Range 6W NMPM Rio Arriba County

11. Elevation (Show whether DR, RKB, RT, GR, etc.)  
6706' GL

Pit or Below-grade Tank Application (For pit or below-grade tank closures, a form C-144 must be attached)

Pit Location: UL I Sect 29 Twp 27N Rng 6W Pit type: Drilling Depth to Groundwater >100' Distance from nearest fresh water well >1000'

Distance from nearest surface water >1000' Below-grade Tank Location UL  Sect  Twp  Rng ;  
 feet from the  line and  feet from the  line

12. Check Appropriate Box to Indicate Nature of Notice, Report or Other Data

NOTICE OF INTENTION TO:

PERFORM REMEDIAL WORK ☐ PLUG AND ABANDON ☐

TEMPORARILY ABANDON ☐ CHANGE PLANS ☐

PULL OR ALTER CASING ☐ MULTIPLE COMPLETION ☐

OTHER: Drilling Pit Registration ☒

SUBSEQUENT REPORT OF:

REMEDIAL WORK ☐ ALTERING CASING ☐

COMMENCE DRILLING OPNS. ☐ PLUG AND ABANDONMENT ☐

CASING TEST AND CEMENT JOB ☐

OTHER: ☐

13. Describe proposed or completed operations. (Clearly state all pertinent details, and give pertinent dates, including estimated date of starting any proposed work). SEE RULE 1103. For Multiple Completions: Attach wellbore diagram of proposed completion or recompletion.

We intend to drill a new MV/DK well. The drilling pit will be built and lined according to our general pit guidelines on file at the NMOCD in Aztec, NM.

When the drilling pit is closed, it will be closed as per our general pit closing guidelines on file at the NMOCD.

I hereby certify that the information above is true and complete to the best of my knowledge and belief. I further certify that any pit or below-grade tank has been/will be constructed or closed according to NMOCD guidelines ☒ a general permit ☐ or an (attached) alternative OCD-approved plan ☐.

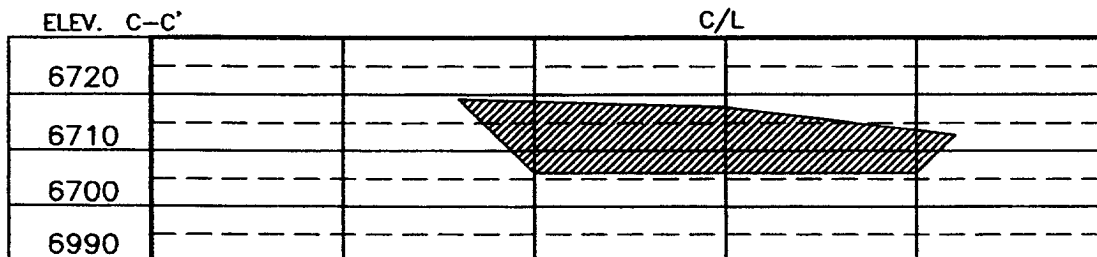
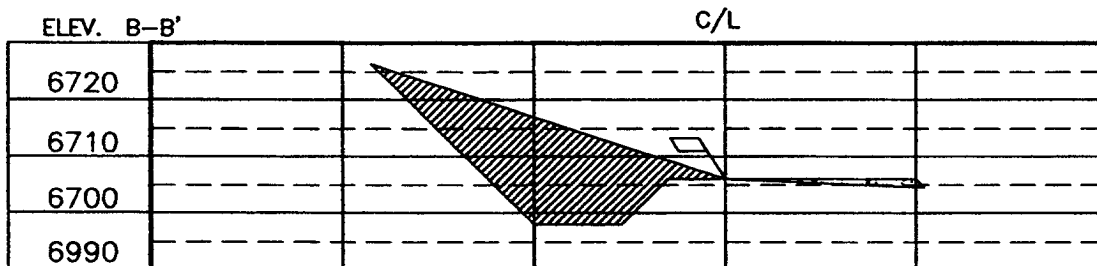
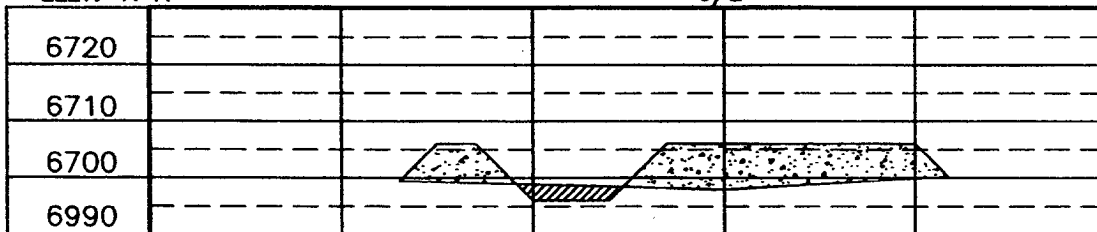
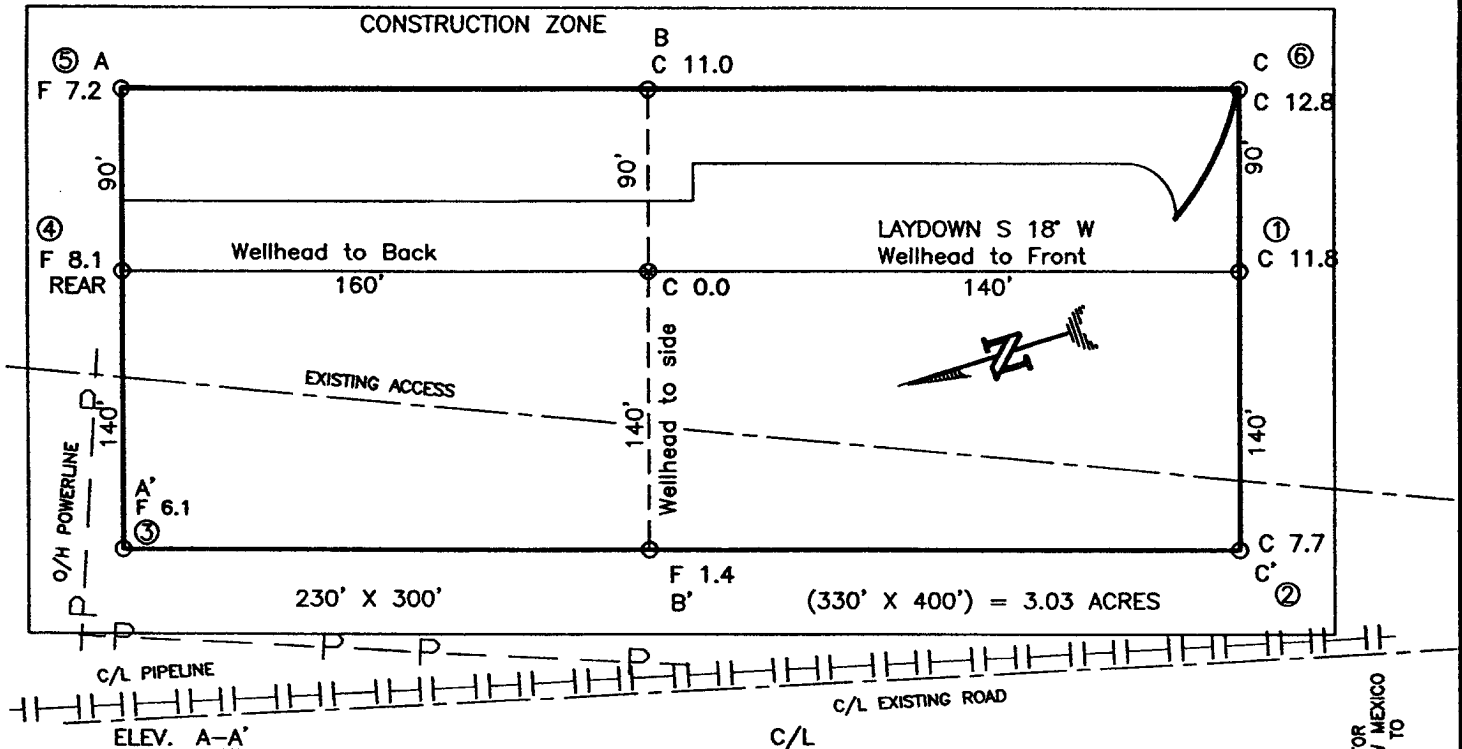
SIGNATURE Mike Pippin TITLE Agent, Petroleum Engineer DATE 6/15/04

Type or print name Mike Pippin E-mail address: mpippin@ddbroadband.net Telephone No. (505)327-4573

(This space for State use)

APPROVED BY [Signature] TITLE STATE OIL & GAS INSPECTOR, DIST. 4 DATE SEP 13 2004  
Conditions of approval, if any:

PURE RESOURCES  
 RINCON UNIT No. 419, 2260' FSL 590' FEL  
 SECTION 29, T27N, R6W, N.M.P.M., RIO ARRIBA COUNTY, N. M.  
 GROUND ELEVATION: 6706', DATE: APRIL 22, 2004



NOTE: CONTRACTOR SHOULD CALL ONE-CALL FOR LOCATION OF ANY MARKED OR UNMARKED BURIED PIPELINES OR CABLES ON WELL PAD AND OR ACCESS ROAD AT LEAST TWO (2) WORKING DAYS PRIOR TO CONSTRUCTION.

NOTE:  
 DAGGETT ENTERPRISES, INC. IS NOT LIABLE FOR  
 UNDERGROUND UTILITIES OR PIPELINES. NEW MEXICO  
 ONE CALL TO BE NOTIFIED 48 HOURS PRIOR TO  
 EXCAVATION OR CONSTRUCTION.

Daggett Enterprises, Inc.  
 Surveying and Oil Field Services  
 P. O. Box 15088 • Farmington, NM 87401  
 Phone (505) 328-1772 • Fax (505) 328-6019  
 NEW MEXICO P.L.S. No. 14827  
 CABLE: PRO96CF8  
 DATE: 5/03/04



DRWN BY: AG  
 ROW# PRO99

**PURE RESOURCES LP**  
**RINCON UNIT #419 MV/DK**  
590' FEL, 2260' FSL  
Unit I Sec. 29 T27N R06W  
Rio Arriba County, NM

**Drilling Program**

1. **ESTIMATED FORMATION TOPS: (KB)**

<u>Formation Name</u>	<u>Depth</u>
San Jose	Surface
Ojo Alamo	2374'
Kirtland	2500'
Fruitland	2915'
Pictured Cliffs	3204'
Cliffhouse	4893'
Menefee	5006'
Point Lookout	5451'
Greenhorn	7337'
Graneros	7403'
Dakota	7566'
Intermediate TD (7")	3000'
TD (4-1/2")	7760'

2. **NOTABLE ZONES**

Gas or Oil Zones

Fruitland  
Pictured Cliffs

Cliffhouse  
Menefee  
Point Lookout  
Dakota

Water Zones

Ojo Alamo  
Kirtland

Coal Zone

Fruitland

Water zones will be protected with casing, cement, and weighted mud. Fresh water found while drilling will be recorded. Oil or gas shows will be tested for commercial potential based on the engineer's recommendations.

**PURE RESOURCES LP**  
**RINCON UNIT #419 MV/DK**  
590' FEL, 2260' FSL  
Unit I Sec. 29 T27N R06W  
Rio Arriba County, NM

**3. PRESSURE CONTROL:** (See Page 5 & 6)

Maximum expected pressure is ~2700 psi. The drilling contract has not yet been awarded, thus the exact BOP model to be used is not yet known. A typical 11" 3,000 psi model is on page #5.

BOP equipment and all accessories will meet or exceed BLM requirements in 43 CFR Part 3160 for a 3000 psi system. A 3000 psi double ram hydraulic BOP will be used. Accumulator system capacity will be sufficient to close all BOPE with a 50% safety factor. Fill, kill, and choke manifold lines will be 2". Accessories will include upper and lower Kelly cocks with handles, stabbing valve to fit drill pipe on floor at all times, string float at bit, 3000 psi choke manifold with 2" adjustable and 2" positive chokes, and pressure gauge. BOPs will be tested every 24 hours. Tests will be recorded on IADC log.

**4. CASING & CEMENT**

<u>Hole Size</u>	<u>O.D.</u>	<u>Weight (lb/ft)</u>	<u>Grade</u>	<u>Age</u>	<u>Connection</u>	<u>GL Setting Depth</u>
12-1/4"	9-5/8"	32.3#	H-40	New	ST&C	350'
8-3/4"	7"	20#	K-55	New	ST&C	3000'
6-1/4"	4-1/2"	11.6#	I-80	New	ST&C	7760'

**Surface casing** will be cemented to the surface with ~220 cu. ft. (~158 sx) Type III cmt or equivalent (1.39 ft<sup>3</sup>/sx yield, 14.6 ppg, & 6.7 gps) with 2% CaCl<sub>2</sub> and 1/4#/sx celloflake. Volume based on 100% excess. We plan to run a minimum of at least 3 centralizers. A wooden wiper plug will be displaced to within 20' of the shoe. WOC = 12 hours. Surface casing will be tested to 500 psi for 15 minutes.

**Intermediate casing** will be cemented to surface with a single stage. Total cement = 654 cu. ft.. Volumes are calculated at 45% excess. If cement does not circulate to surface, then a temperature survey will be run to determine the actual cement top as needed. WOC = 12 hours. Test to 1000 psi for 15 minutes.

Lead cement will be ~543 cu. ft. (~257 sx) Premium Lite w/2% CaCl<sub>2</sub>, 1/4#/sx cello flake, 6-1/4#/sx gilsonite, 8% gel mixed at 11.0 gps, 12.1 ppg for a yield of 2.11 cu. ft. per sx.

Tail cement will be ~111 cu. ft. (~80 sx) Type III w/2% CaCl<sub>2</sub>, 1/4#/sx Cello flake mixed at 6.7 gps, 14.6 ppg for a yield of 1.39 cu. ft. per sx.

Cementing equipment will include a guide shoe, and autofill float collar will be run 20' off bottom. We plan on running at least 10 centralizers.

**Production casing** will be cemented to surface ensuring cement coverage inside the intermediate casing with a single stage. Total cement = 1217 cu. ft.. Volumes are

**PURE RESOURCES LP**  
**RINCON UNIT #419 MV/DK**  
590' FEL, 2260' FSL  
Unit I Sec. 29 T27N R06W  
Rio Arriba County, NM

calculated at 45% excess. If necessary, a CBL will be run during completion operations to insure cement coverage inside the 7" intermediate casing. Casing will be pressure tested to 6000 psi during completion operations.

Lead cement will be ~201 cu. ft. (~85 sx) Premium Lite High Strength FM w/0.3% R-3, 2% KCl, 1/4#/sx Cello flake, 0.3% CD-32, 5#/sx Pheno Seal, 1% FL-52, mixed at 12.7 gps, 11.9 ppg for a yield of 2.37 cu. ft. per sx.

Tail cement will be ~1016 cu. ft. (~503 sx) Premium Lite High Strength FM w/0.3% R-3, 2% KCl, 1/4#/sx Cello flake, 0.3% CD-32, 5#/sx Pheno Seal, 1% FL-52, mixed at 10.1 gps, 12.5 ppg for a yield of 2.02 cu. ft. per sx.

Cementing equipment will include a guide shoe, and autofill float collar will be run 20' off bottom with a centralized shoe joint and next five joints. Centralizers will be run across the producing zones.

**5. MUD PROGRAM**

<u>Depth</u>	<u>Type</u>	<u>Wt./ppg.</u>	<u>Vis.</u>	<u>Fluid Loss</u>	<u>PH</u>
0'-350'	FW gel/lime spud mud	8.4-8.7	30-50	NC	10
350'-3000'	FW gel/Polymer	8.3-8.6	30-35	<20cc's	9.5
3000'-7760'	Air &/or Air/mist	N/A	N/A	N/A	N/A

Lost circulation and absorption material will be on location.

**6. CORING, TESTING, & LOGGING**

No cores, drill stem tests, or open hole logs are planned. A cased hole TDT log will be run from TD through the top of the Mesaverde during completion operations.

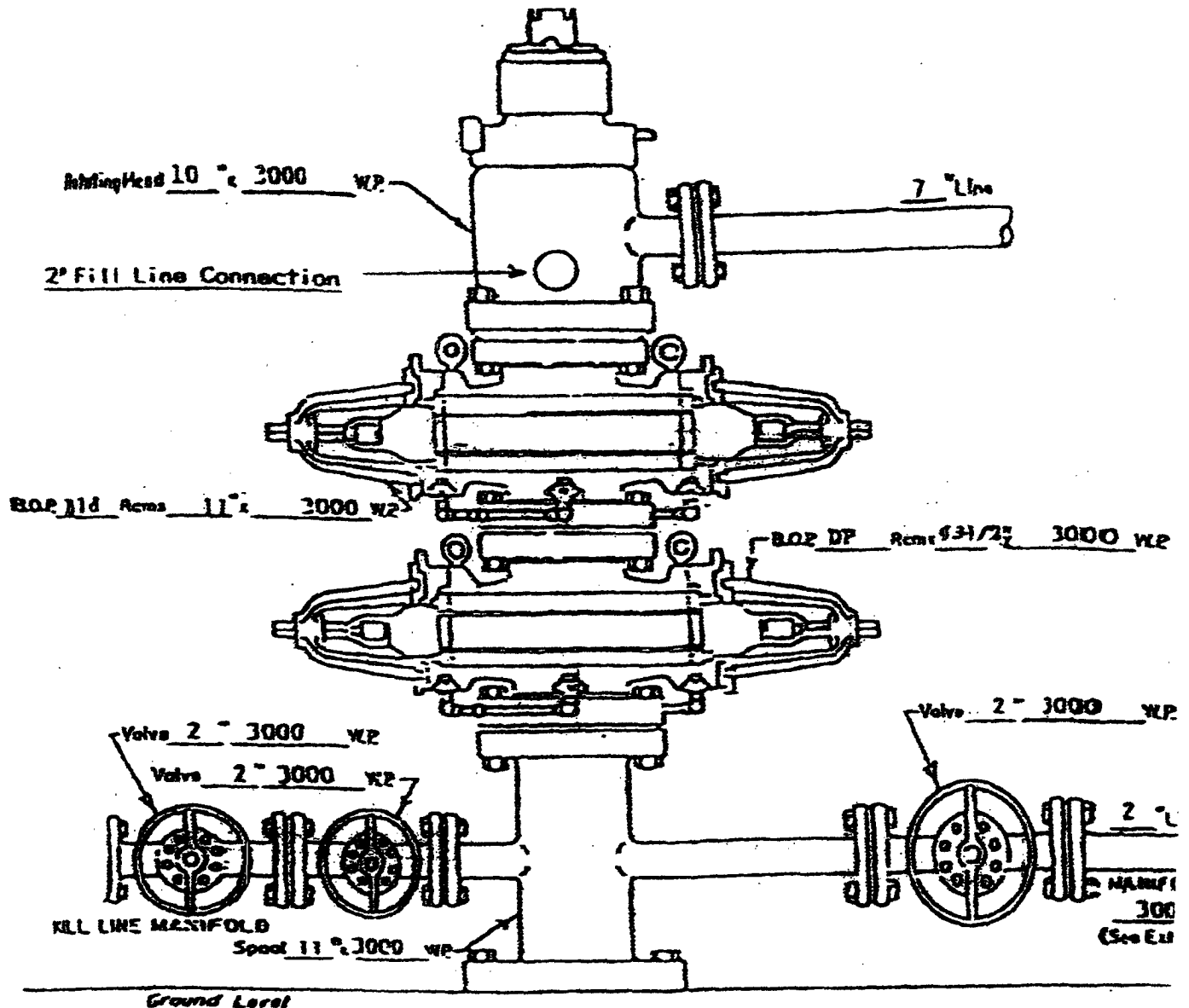
**7. DOWN HOLE CONDITIONS**

No abnormal pressures, temperatures, nor hydrogen sulfide are expected. Maximum pressure will be ~2700 psi.

**8. OTHER INFORMATION**

The anticipated spud date is November 18, 2004. It is expected it will take ~7 days to drill and ~12 days to complete the well. Completion will start about one month after the spud and will include hydraulic fracturing.

RINCON UNIT WELLS  
RINCON FIELD  
RIO ARriba COUNTY, NEW MEXICO



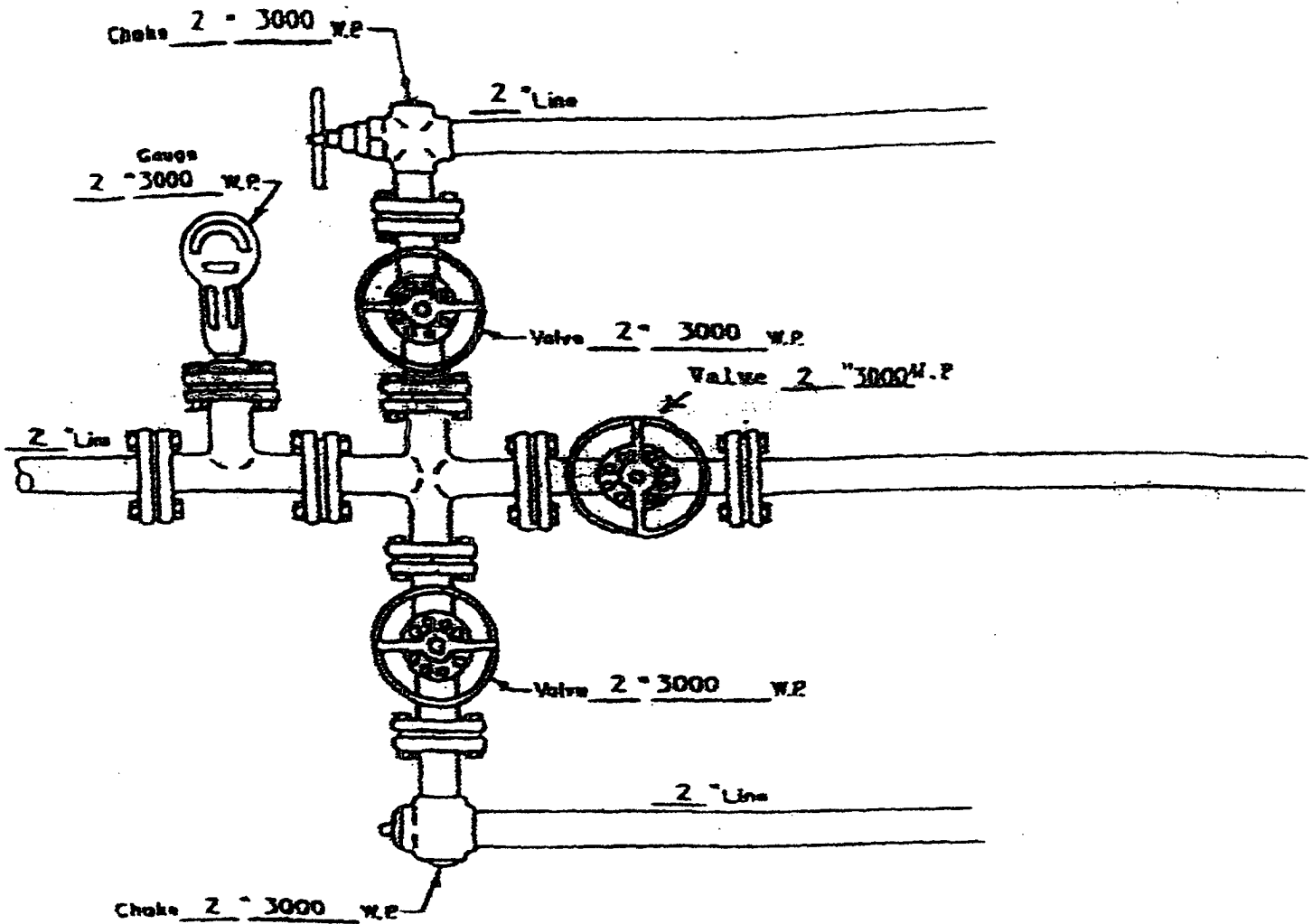
WELL HEAD B.O.P.  
3000 #W.P.

☐ Manual  
☒ Hydraulic

NOTE: Although 3000 psi BOP equipment will be used, equipment determination and line sizing are based on the requirements for 2000 psi BOP equipment due to the known drilling and reservoir conditions.



RINCON UNIT WELLS  
RINCON FIELD  
RIO ARriba COUNTY, NEW MEXICO



MANIFOLD

3000 #W.P.

☒ Manual

☐ Hydraulic

PAGE #6  
ATTACHMENT NO. 2