

UNITED STATES
DEPARTMENT OF THE INTERIOR
BUREAU OF LAND MANAGEMENT

APPLICATION FOR PERMIT TO DRILL, DEEPEN, OR PLUG BACK

RECEIVED

1a. Type of Work
DRILL

1b. Type of Well
GAS

2. Operator
BURLINGTON RESOURCES Oil & Gas Company

3. Address & Phone No. of Operator
PO Box 4289, Farmington, NM 87499
(505) 326-9700

4. Location of Well
1560' FSL, 2390' FEL
Latitude 36° 46.8383 Longitude 107° 33.4085

5. Lease Number
NMSF-079383
Unit Reporting Number
891000538A 070 Farmington, NM

6. If Indian, All. or Tribe

7. Unit Agreement Name
San Juan 30-6 Unit

8. Farm or Lease Name
San Juan 30-6 Unit

9. Well Number
411S

10. Field, Pool, Wildcat
Basin Fruitland Coal

11. Sec., Twn, Rge, Mer. (NMPM)
Sec. 27, T-30-N, R-7-W
API # 30-039- 27259

12. County
Rio Arriba

13. State
NM

14. Distance in Miles from Nearest Town
7 miles from Navajo City

15. Distance from Proposed Location to Nearest Property or Lease Line
1560'

16. Acres in Lease

17. Acres Assigned to Well
320 E/2

18. Distance from Proposed Location to Nearest Well, Drig, Compl, or Applied for on this Lease
900'

19. Proposed Depth
3742'

20. Rotary or Cable Tools
Rotary

21. Elevations (DF, FT, GR, Etc.)
6870' GR

22. Approx. Date Work will Start

23. Proposed Casing and Cementing Program
See Operations Plan attached

24. Authorized by: Debra Call
Regulatory/Compliance Supervisor

Date 12-11-02

PERMIT NO. _____

APPROVAL DATE _____

APPROVED BY /s/ David J. Mankiewicz

TITLE _____

DATE MAY - 2 2003

Archaeological Report to be submitted

Threatened and Endangered Species Report to be submitted

NOTE: This format is issued in lieu of U.S. BLM Form 3160-3

Title 18 U.S.C. Section 1001, makes it a crime for any person knowingly and willfully to make to any department or agency of the United States any false, fictitious or fraudulent statements or presentations as to any matter within its jurisdiction.

This action is subject to technical and procedural review pursuant to 43 CFR 3165.6 and appeal pursuant to 43 CFR 3165.4

DRILLING OPERATIONS AUTHORIZED ARE
SUBJECT TO COMPLIANCE WITH ATTACHED
"GENERAL REQUIREMENTS".

NMOCG

District II
PO Drawer DD, Artesia, NM 88211-0719

OIL CONSERVATION DIVISION
PO Box 2088
Santa Fe, NM 87504-2088

District III
1000 Rio Brazos Rd., Aztec, NM 87410

District IV
PO Box 2088, Santa Fe, NM 87504-2088

☐ AMENDED REPORT

WELL LOCATION AND ACREAGE DEDICATION PLAT

*API Number 30-039-		*Pool Code 71629	*Pool Name Basin Fruitland Coal
*Property Code 7469	*Property Name SAN JUAN 30-6 UNIT		*Well Number 411S
*OGRID No. 14538	*Operator Name BURLINGTON RESOURCES OIL & GAS COMPANY, LP		*Elevation 6870

¹⁰ Surface Location

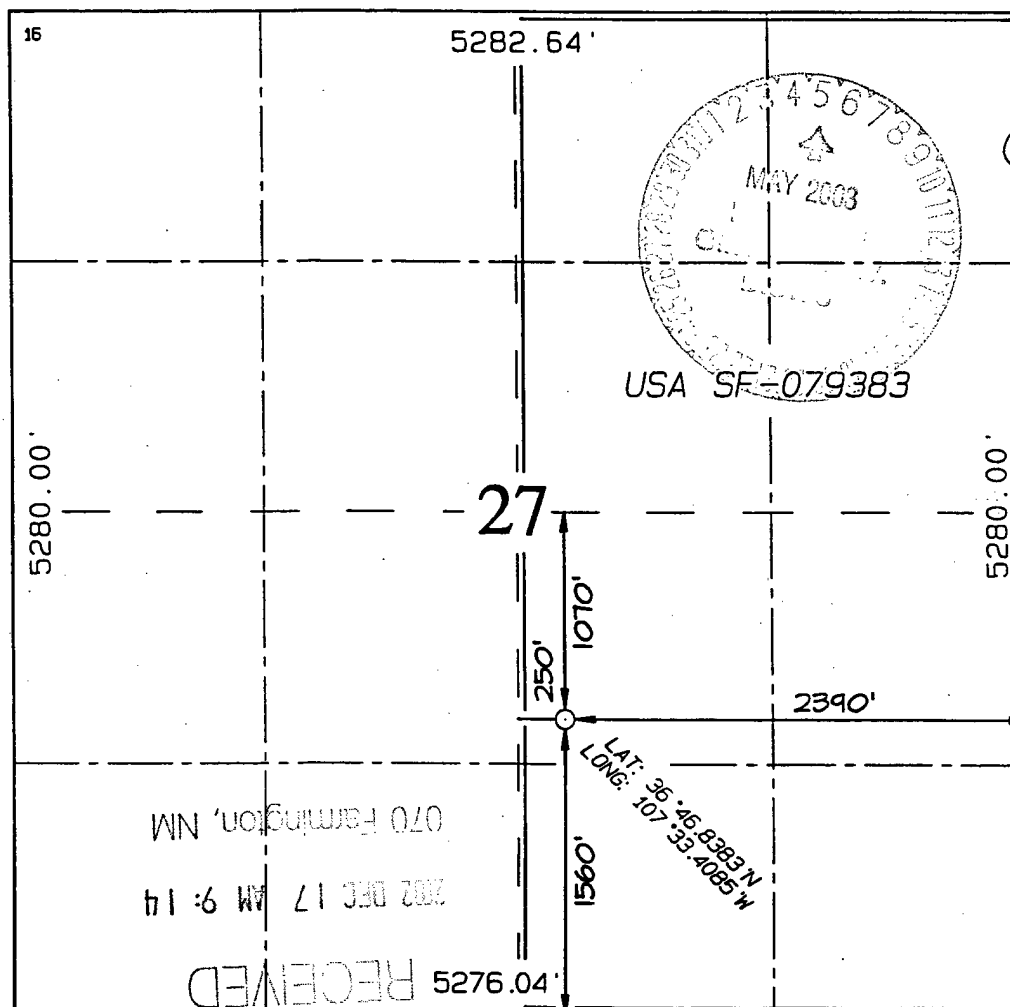
UL or lot no.	Section	Township	Range	Lot Idn	Feet from the	North/South line	Feet from the	East/West line	County
J	27	30N	7W		1560	SOUTH	2390	EAST	RIO ARriba

¹¹ Bottom Hole Location If Different From Surface

UL or lot no.	Section	Township	Range	Lot Idn	Feet from the	North/South line	Feet from the	East/West line	County

¹² Dedicated Acres FC-E/320	¹³ Joint or Infill	¹⁴ Consolidation Code	¹⁵ Order No.
---	-------------------------------	----------------------------------	-------------------------

NO ALLOWABLE WILL BE ASSIGNED TO THIS COMPLETION UNTIL ALL INTERESTS HAVE BEEN CONSOLIDATED OR A NON-STANDARD UNIT HAS BEEN APPROVED BY THE DIVISION



¹⁷ OPERATOR CERTIFICATION
I hereby certify that the information contained herein is true and complete to the best of my knowledge and belief

Peggy Cole
Signature

Peggy Cole
Printed Name

Regulatory Supervisor
Title

12-11-02
Date

¹⁸ SURVEYOR CERTIFICATION
I hereby certify that the well location shown on this plat was plotted from field notes of actual surveys made by me or under my supervision, and that the same is true and correct to the best of my belief.

Survey Date: NOVEMBER 1, 2002

Signature and Seal of Professional Surveyor



JASON C. EDWARDS
Certificate Number 15269

OPERATIONS PLAN

Well Name: San Juan 30-6 Unit #411S
Location: 1560' FSL, 2390' FEL, Section 27, T-30-N, R-7-W
Latitude 36° 46.8383, Longitude 107° 33.4085
Rio Arriba County, NM
Formation: Basin Fruitland Coal
Elevation: 6870' GR

Formation:	Top	Bottom	Contents
Surface	San Jose	2833'	
Ojo Alamo	2833'	2936'	aquifer
Kirtland	2936'	3314'	gas
Fruitland	3314'	3742'	gas
Intermediate casing	3497'		
Top of Coal	3547'	3742'	
Pictured Cliffs	3746'		
Total Depth	3742'		

Logging Program:

Open hole - None
Mud log - TD to intermediate casing

Coring Program: none

Mud Program:

Interval	Type	Weight	Vis.	Fluid Loss
0- 500'	Spud	8.4-9.0	40-50	no control
500-3497'	Non-dispersed	8.4-9.0	30-60	no control

Casing Program (as listed, the equivalent, or better):

Hole Size	Depth Interval	Csg. Size	Wt.	Grade
12 1/4"	0' - 500'	9 5/8"	32.3#	WC-50
8 3/4"	0' - 3497'	7"	20.0#	J-55
6 1/4"	3397' - 3742'	5 1/2"	15.5#	K-55

Tubing Program:

0' - 3742'	2 3/8"	4.7#	J-55
------------	--------	------	------

Float Equipment: 9 5/8" surface casing - saw tooth guide shoe. Centralizers will be run in accordance with Onshore Order #2.

7" intermediate casing - guide shoe and self-fill float collar. Standard Centralizers run every other joint above shoe. Two turbolizing type centralizers - one below and one into the base of the Ojo Alamo @ 2936'. Standard centralizers thereafter every fourth joint up to the base of the surface pipe.

5 1/2" production liner - Pre-drilled liner run to total depth with an overlap into the 7" casing. Liner hanger is a slip grip type.

Wellhead Equipment: 9 5/8" x 7" x 2 3/8" x 11" 3000 psi xmas tree assembly.

Cementing:

9 5/8" surface casing - cement with 346 sx Type III cement with ¼ pps cellophane and 2% calcium chloride (488 cu.ft. of slurry, 200% excess to circulate to surface). WOC 24 hours for pre-set holes or 8 hours for conventionally set holes before pressure testing or drilling out from under surface casing. Test casing to 600 psi/30 minutes.

7" intermediate casing - lead w/410 sacks Premium Lite cement with 3% calcium chloride, 0.25 pps Celloflake, 5 pps LCM-1, 0.4% fluid loss, 0.4% sodium metasilicate. Tail with 90 sacks Type III with 1% calcium chloride, 0.25 pps Celloflake, 0.2% fluid loss (998 cu.ft., 100% excess to circulate to surface).

5 1/2" liner - uncemented.

Note: If open hole logs are run, cement volumes will be based on 25% excess over caliper volumes.

BOP and tests:

Surface to intermediate TD - 11" 2000 psi (minimum) double gate BOP stack (Reference Figure #1). Prior to drilling out surface casing, test rams to 600#/30 min.

Intermediate TD to Total Depth - 7 1/6" 2000 psi (minimum) double gate BOP stack (Reference Figure #2). Prior to drilling out intermediate casing, test blind rams and casing to 2500 psi for 30 minutes; all pipe rams and casing to 2500 psi for 30 minutes each.

From surface to TD - choke manifold (Reference Figure #3).

Pipe rams will be actuated at least once each day and blind rams actuated once each trip to test proper functioning. An upper kelly cock valve with handle and drill string safety valves to fit each drill string will be maintained and available on the rig floor.

Additional information:

- The Fruitland Coal formation will be completed.
- Anticipated pore pressure for the Fruitland is 500 psi.
- This gas is dedicated.
- The east half of section 27 is dedicated to this well.

Drilling Engineer:

Em J. Giles

Date:

12/13/02