

DISTRICT I
P.O. Box 1980, Hobbs, NM 88241-1980

DISTRICT II
P.O. Drawer DD, Artesia, NM 88211-0719

DISTRICT III
1000 Rio Brazos Rd., Aztec, NM 87410

DISTRICT IV
PO Box 2088, Santa Fe, NM 87504-2088

State of New Mexico
Energy, Minerals and Natural Resources Department

Form C-101
Revised February 10, 1994

Instructions on back
Submit to Appropriate District Office

State Lease - 6 Copies
Fee Lease - 5 Copies

OIL CONSERVATION DIVISION

PO BOX 2088
Santa Fe, NM 87504-2088

AMENDED REPORT

APPLICATION FOR PERMIT TO DRILL, RE-ENTER, DEEPEN, PLUGBACK, OR ADD A ZONE

Operator Name and Address Kukui Operating Company c/o Walsh Engineering and Production Corp. 7415 E. Main St., Farmington, NM 87402 (505) 327-4892		OGRID Number 149678
Property Code 32337	Property Name Angel Peak 11	API Number 30-0 45-31651
		Well No. 45

7 Surface Location

UL or lot no. E	Section 11	Township 27N	Range 10W	Lot Idn	Feet from the 1980	North/South Line North	Feet from the 1160	East/West Line West	County San Juan
--------------------	---------------	-----------------	--------------	---------	-----------------------	---------------------------	-----------------------	------------------------	--------------------

8 Proposed Bottom Hole Location If Different From Surface

UL or lot no.	Section	Township	Range	Lot Idn	Feet from the	North/South Line	Feet from the	East/West Line	County
Proposed Pool 1 Basin Fruitland Coal					Proposed Pool 2				

Work Type Code N	Well Type Code G	Cable/Rotary R	Lease Type Code P	Ground Level Elevation 6202'
Multiple No	Proposed Depth 2230'	Formation Pictured Cliffs	Contractor NA	Spud Date June 1, 2003

21 Proposed Casing and Cement Program

Hole Size	Casing Size	Casing weight/feet	Setting Depth	Sacks of Cement	Estimated TOC
8-3/4"	7"	20#	120' +/-	50 (59 cu.ft.)	Surface
6-1/4"	4-1/2"	10.5#	2230' +/-	165 sx + 100 sx	Surface

22 Describe the proposed program. If this application is to DEEPEN or PLUG BACK give the data on the present productive zone and proposed new productive zone. Describe the blowout prevention program, if any. Use additional sheets if necessary.

Kukui Operating proposes to drill a vertical well at the above described location and test the Fruitland Coal formation. A 8-3/4" surface hole will be drilled to 120' where 7", 20# casing will set and cemented to surface with 50 sx (59 cu.ft.) of Cl "B" cement with 1/4#/sk celloflake and 2% CaCl2. After WOC a 2000 psi double ram or annular preventer will be installed and pressure tested to 600 psi. A 6-1/4" hole will be drilled to approximately 2100' with a fresh water polymer mud system. Induction and density logs will be run at TD. 4-1/2", 10.5# casing will be run to TD and cemented to surface with 165 sx (340 cu.ft.) of Cl "B" with 2% SMS and 1/4 #/sk celloflake, and 100 sx (118 cu.ft.) of CL "B" with 5#/sk gilsonite and 1/4#/sk celloflake. The Fruitland Coal formation will be selectively perforated and completed. The well will be connected to El Paso Field Services gathering system.

23 I hereby certify that the information given above is true and complete to the best of my knowledge and belief.

Signature: *Paul C. Thompson*
Printed name: Paul C. Thompson, P.E.
Title: Agent

Date: 04/25/03
Phone: (505) 327-4892

OIL CONSERVATION DIVISION

Approved by: *[Signature]*
Title: DEPUTY OIL & GAS INSPECTOR, DIST. #2
Approval Date: APR 28 2003
Expiration Date: APR 28 2004
Conditions of Approval
Attached ☐

District I
PO Box 1980, Hobbs, NM 88241-1980

District II
PO Drawer DD, Artesia, NM 88211-0719

District III
1000 Rio Brazos Rd., Aztec, NM 87410

District IV
PO Box 2088, Santa Fe, NM 87504-2088

State of New Mexico
Energy, Minerals & Natural Resources Department

OIL CONSERVATION DIVISION
PO Box 2088
Santa Fe, NM 87504-2088

Form C-102
Revised February 21, 1994
Instructions on back
Submit to Appropriate District Office
State Lease - 4 Copies
Fee Lease - 3 Copies

☐ AMENDED REPORT

WELL LOCATION AND ACREAGE DEDICATION PLAT

*API Number 30-045-31651		*Pool Code 71629	*Pool Name BASIN FRUITLAND COAL
*Property Code 32337	*Property Name ANGEL PEAK 11		*Well Number 4S
*GRID No. 149678	*Operator Name KUKUI OPERATING COMPANY		*Elevation 6202'

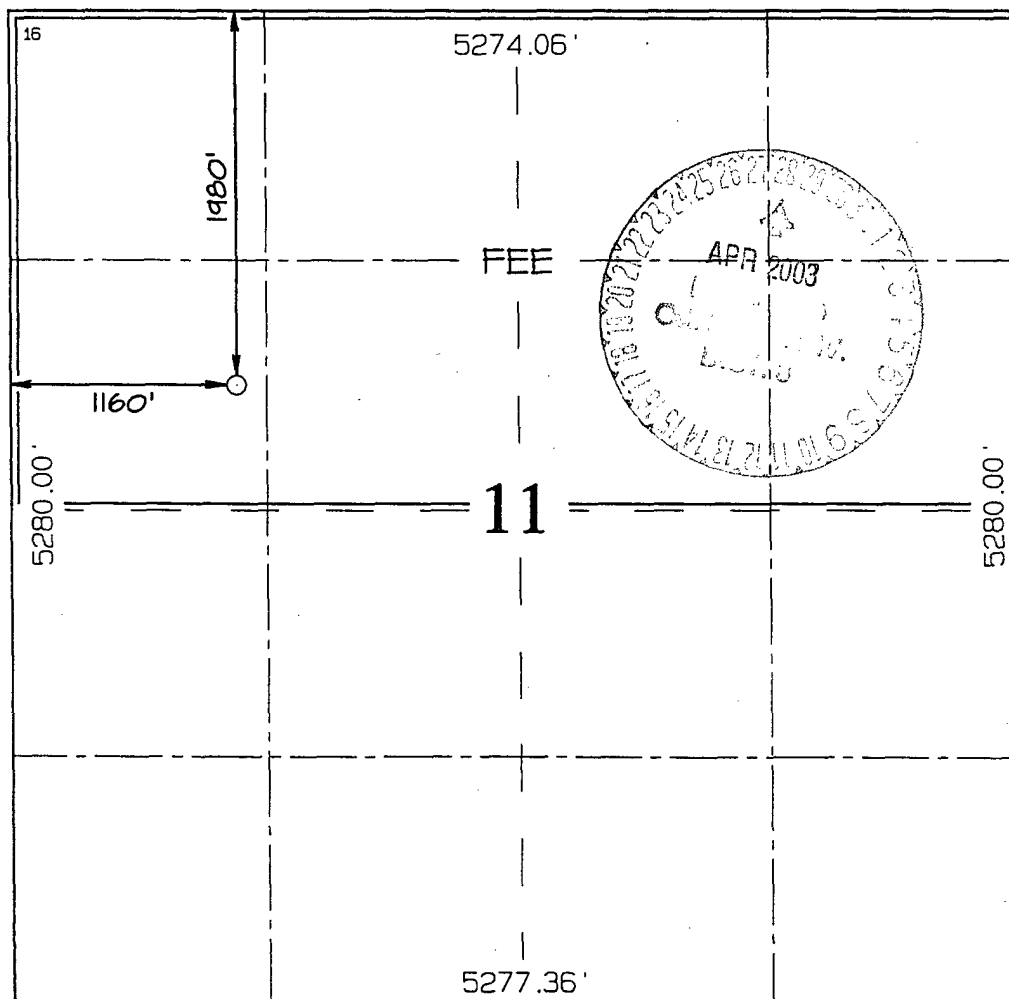
¹⁰ Surface Location

UL or lot no.	Section	Township	Range	Lot Idn.	Feet from the	North/South line	Feet from the	East/West line	County
E	11	27N	10W		1980	NORTH	1160	WEST	SAN JUAN

¹¹ Bottom Hole Location If Different From Surface

UL or lot no.	Section	Township	Range	Lot Idn.	Feet from the	North/South line	Feet from the	East/West line	County
¹² Dedicated Acres 320.0 Acres - (N/2)					¹³ Joint or Infill		¹⁴ Consolidation Code		¹⁵ Order No.

NO ALLOWABLE WILL BE ASSIGNED TO THIS COMPLETION UNTIL ALL INTERESTS HAVE BEEN CONSOLIDATED OR A NON-STANDARD UNIT HAS BEEN APPROVED BY THE DIVISION



¹⁷ OPERATOR CERTIFICATION

I hereby certify that the information contained herein is true and complete to the best of my knowledge and belief

Paul C. Thompson
Signature

PAUL C. THOMPSON
Printed Name

AGENT
Title

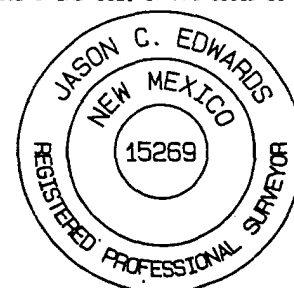
4/25/03
Date

¹⁸ SURVEYOR CERTIFICATION

I hereby certify that the well location shown on this plat was plotted from field notes of actual surveys made by me or under my supervision, and that the same is true and correct to the best of my belief.

Date of Survey: **MARCH 6, 2003**

Signature and Seal of Professional Surveyor



JASON C. EDWARDS
Certificate Number 15269