

2004 OCT 20 AM 11 29

FORM APPROVED  
OMB NO. 1004-0136  
Expires: November 30, 2000

UNITED STATES  
DEPARTMENT OF THE INTERIOR  
BUREAU OF LAND MANAGEMENT  
APPLICATION FOR PERMIT TO DRILL OR REENTER

RECEIVED  
OCT 20 2004  
FARMINGTON NM

1a. TYPE OF WORK <input checked="" type="checkbox"/> DRILL <input type="checkbox"/> REENTER		5. Lease Serial No. <b>NO-G-9911-1371</b>
b. TYPE OF WELL <input type="checkbox"/> OIL <input checked="" type="checkbox"/> GAS WELL <input type="checkbox"/> OTHER <input type="checkbox"/> SINGLE ZONE <input type="checkbox"/> MULTIPLE ZONE		If Indian, Allottee or Tribe Name <b>Navajo Allottee</b>
2. Name of Operator <b>Coleman Oil &amp; Gas, Inc.</b>		7. If Unit or CA Agreement, Name and No.
3a. Address <b>P.O. Drawer 3337, Farmington N.M. 87499</b>		8. Lease Name and Well No. <b>Juniper Com 4 #12</b>
3b. Phone No. (include area code) <b>(505) 327- 0356</b>		9. API Well No. <b>30-045-32548</b>
4. Location of well (Report location clearly and in accordance with any State requirements. *) At surface <b>1470' FNL, 885' FWL Latitude 36° 20' 47", Longitude 107° 54' 25"</b> At proposed prod. zone		10. Field and Pool, or Exploratory <b>Basin Fruitland Coal</b>
14. DISTANCE IN MILES AND DIRECTION FROM NEAREST TOWN OR POST OFFICE* <b>South East of Farmington New Mexico on County RD. 7520, approximately 40 miles.</b>		11. Sec., T., R., M., or Blk. And Survey or Area <b>E, Section 4, T24N, R10W</b>
15. Distance from proposed* location to nearest property or lease line, ft. (Also to nearest drig unit line, if any) <b>885'</b>	16. No. of Acres in lease <b>161.04</b>	12. County or Parish <b>San Juan</b>
17. Spacing Unit dedicated to this well <b>321.04 ACRES W/2</b>	13. State <b>NM</b>	
18. Distance from proposed location* to nearest well, drilling, completed, applied for, on this lease, ft. <b>NA</b>	19. Proposed Depth <b>1830'</b>	20. BLM/ BIA Bond No. on file <b>BIA Blanket Bond #08510607</b>
21. ELEVATIONS (Show whether DF, RT, GR, etc.) <b>6878'</b>	22. Aproximate date work will start* <b>October-04</b>	23. Estimated Duration <b>2 Weeks</b>

24. Attachments

The following, completed in accordance with the requirements of Onshore Oil and Gas Order No. 1 shall be attached to this form:

- |  |   |
|--|---|
| 1. Well plat certified by a registered surveyor.   | 4. Bond to cover the operations unless covered by existing bond on file(see item 20 above).           |
| 2. A Drilling Plan.  | 5. Operator certification.  |
| 3. A Surface Use Plan ( if the location is on National Forest System Lands, the SUPO shall be filed with the appropriate Forest Service Office). | 6. Such other site specific information and/ or plans as may be required by the a authorized officer. |

25. Signature <i>Michael T. Hanson</i>	Name (Printed/ Typed) <b>Michael T. Hanson</b>	DATE <b>18-Aug-03</b>
Title <b>Operations Engineer</b>		
Approved By (Signature) <i>D. Montoya</i>	Name (Printed/ Typed)	DATE <b>9-30-04</b>
Title <b>AEM</b>	Office <b>FFO</b>	

Application approval does not warrant or certify that the applicant holds legal or equitable title to those rights in the subject lease which would entitle the applicant to conduct operations thereon.

Conditions of approval, if any, are attached.

Title 18 U.S.C. Section 1001 and Title 43 U.S.C. Section 1212, make it a crime for any person knowingly and willfully to make to any department or agency of the United States any false, fictitious or fraudulent statements or representations as to any matter within its jurisdiction.

\*See Instructions On Reverse Side

This action is subject to technical and procedural review pursuant to 43 CFR 3165.3 and appeal pursuant to 43 CFR 3165.4

NMOCOD

DRILLING OPERATIONS AUTHORIZED ARE  
SUBJECT TO COMPLIANCE WITH ATTACHED  
"GENERAL REQUIREMENTS".

District I  
PO Box 1980, Hobbs, NM 88241-1980

District II  
PO Drawer PD, Artesia, NM 88211-0719

District III  
1000 Rio Brazos Rd., Aztec, NM 87410

District IV  
PO Box 2088, Santa Fe, NM 87504-2088

State of New Mexico  
Energy, Minerals & Natural Resources Department

OIL CONSERVATION DIVISION  
PO Box 2088  
Santa Fe, NM 87504-2088

Form C-102  
Revised February 21, 1994  
Instructions on back  
Submit to Appropriate District Office  
State Lease - 4 Copies  
Fee-Lease - 3 Copies

☐ AMENDED REPORT

WELL LOCATION AND ACREAGE DEDICATION PLAT

*API Number <b>30045-32548</b>		*Pool Code <b>71629</b>	*Pool Name <b>BASIN FRUITLAND COAL</b>
*Property Code <b>34067</b>	*Property Name <b>JUNIPER COM 4</b>		*Well Number <b>12</b>
*OGRID No. <b>4838</b>	*Operator Name <b>COLEMAN OIL &amp; GAS, INC.</b>		*Elevation <b>6878</b>

<sup>10</sup> Surface Location

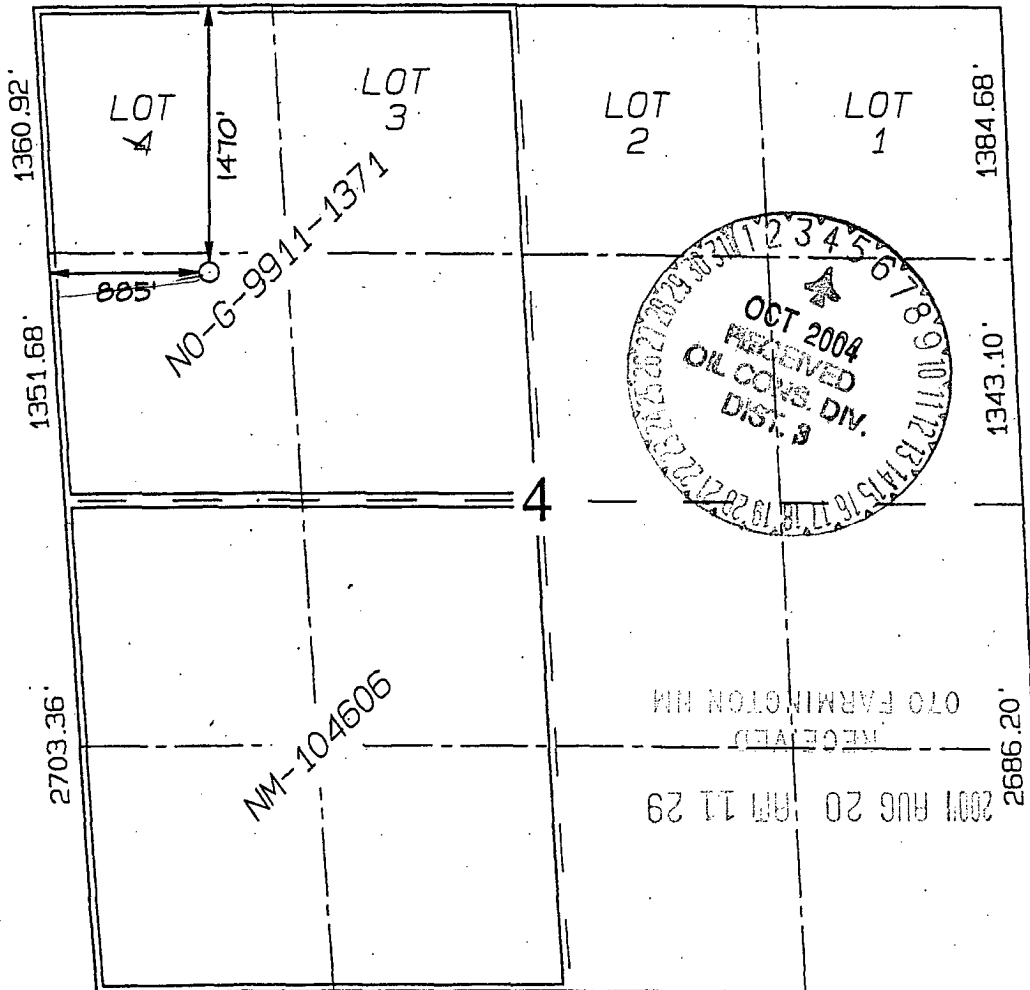
UL or lot no.	Section	Township	Range	Lot Idn	Feet from the	North/South line	Feet from the	East/West line	County
E	4	24N	10W		1470	NORTH	885	WEST	SAN JUAN

<sup>11</sup> Bottom Hole Location If Different From Surface

UL or lot no.	Section	Township	Range	Lot Idn	Feet from the	North/South line	Feet from the	East/West line	County
<sup>12</sup> Dedicated Acres <b>321.04 Acres - (W/2)</b>					<sup>13</sup> Joint or Infill	<sup>14</sup> Consolidation Code	<sup>15</sup> Order No.		

NO. ALLOWABLE WILL BE ASSIGNED TO THIS COMPLETION UNTIL ALL INTERESTS HAVE BEEN CONSOLIDATED  
OR A NON-STANDARD UNIT HAS BEEN APPROVED BY THE DIVISION

5281.98'



<sup>17</sup> OPERATOR CERTIFICATION

I hereby certify that the information contained herein is true and complete to the best of my knowledge and belief

*Michael F. Hanson*  
Signature

**Michael F. Hanson**  
Printed Name

*Engineer*  
Title

*Aug 18, 2004*  
Date

<sup>18</sup> SURVEYOR CERTIFICATION

I hereby certify that the well location shown on this plat was plotted from field notes of actual surveys made by me or under my supervision, and that the same is true and correct to the best of my belief.

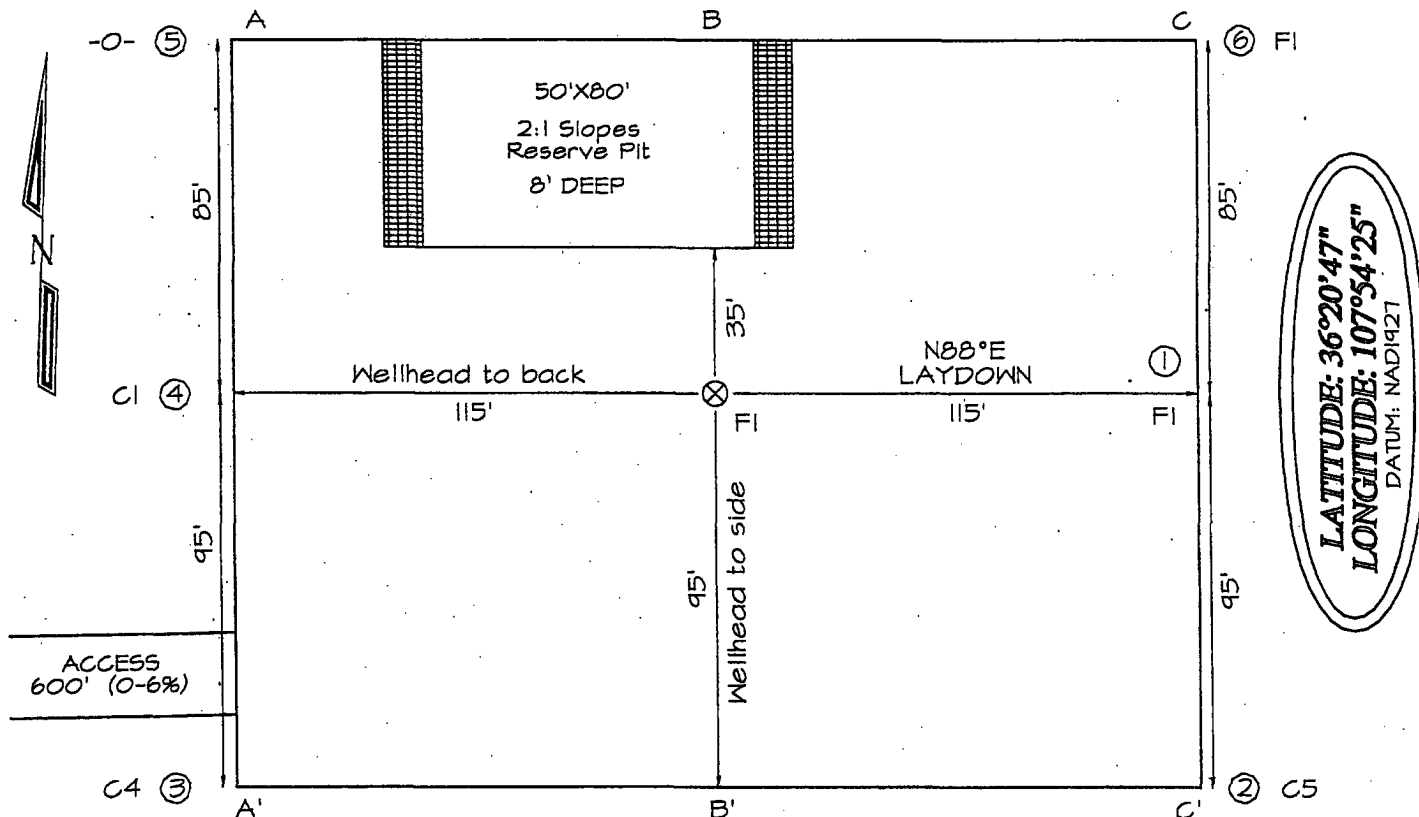
Date of Survey: **MAY 8, 2003**


Signature and Seal of Professional Surveyor



**JASON C. EDWARDS**  
Certificate Number 15269

COLEMAN OIL & GAS, INC. JUNIPER COM #12-4  
1470' FNL & 885' FWL, SECTION 4, T24N, R10W  
NMPM, SAN JUAN COUNTY, NEW MEXICO  
GROUND ELEVATION: 6878' DATE: MAY 8, 2003



A-A'						
6889'						
6879'						
6869'						

B-B'
6889'
6879'
6869'

[illegible]

Note: Contractor should call One-Call for location of any marked or unmarked buried pipelines or cables on well pad and/or access road at least two (2) working days prior to construction

Thursday, August 19, 2004

## OPERATIONS PLAN

**Well Name:** Juniper Com 4 #12  
**Location:** 1470' FNL, 885' FWL Section 4, T-24-N, R-10-W, NMPM  
San Juan County, NM  
**Formation:** Basin Fruitland Coal  
**Elevation:** 6878' GL

Formation:	Top	Bottom	Contents
Nacimiento	Surface	830'	aquifer
Ojo Alamo	830'	915'	aquifer
Kirtland	915'	1405'	
Fruitland	1405'	1655'	gas
Pictured Cliffs	1655'	1830'	gas
Total Depth	1830'		

**Drilling Contractor:** Availability

### Mud Program:

Interval	Type	Weight	Vis.	Fluid Loss
0' - 120'	Spud	8.4 - 9.0	40 - 50	no control
120' - 1830'	Non-dispersed	8.4 - 9.0	30 - 60	6cc or less

**Logging Program:** Porosity Log - Triple Litho Density W/ GR and CAL.  
Induction Log - Array Induction W/ GR and SP

**Coring Program:** None

### Casing Program:

Hole Size	Depth Interval	Csg. Size	Wt.	Grade
12 1/4"	0' - 120'	8 5/8"	24#	J-55 or K-55
7 7/8"	120' - 1830'	5 1/2"	15.5#	J-55 or K-55

### Tubing Program:

0' - 1660'	2 7/8"	6.50#	J-55
------------	--------	-------	------

### Float Equipment:

8 5/8" surface casing - saw tooth guide shoe. One Centralizer.

5 1/2" production casing - Cement guide shoe and self fill insert float collar. Place float one joint above shoe. Five centralizers spaced every other joint above shoe and five centralizers every other joint from top of well.

**Wellhead Equipment:** 8 5/8" x 5 1/2" Braiden Head and 5 1/2" x 2 7/8" Tubing Head.  
Independent Well Head assembly with a minimum rated working pressure of 1000 psig.

**Cementing:**

8 5/8" Surface Casing -

Cement with 92 sacks Class "B" cement with 1/4# celloflake/sx and 2% calcium chloride (113.40 cu. ft. of slurry, 100% excess to circulate to surface). WOC 12 hrs. Test casing to 600 psi/30 minutes.

5 1/2" Production Casing -

Before cementing circulate hole with at least 1 1/2 hole volume of mud. Precede cement with 30 bbls of fresh water. Lead with 195 sacks (508.95 cu. ft) of Class "G" with 3% D79 and 1/4# Per sack D29. (Yield = 2.61 cu. ft. /sk; slurry weight = 11.7 PPG). Tail with 90 sacks (113.40 cu. ft.) of Class "B" with "G" 50/50 POZ 2% GEL D-20, 5# Per sack Gilsonite, .1% D46, 1% S-1 and 1/4# Per sack D29 (Yield = 1.26 cu. ft. / sk; slurry weight = 13.5 PPG). Total cement volume is 622.35 cu. ft. (100% excess on open hole, calculated on cement volumes). WOC 12 hrs. Test casing to 600 psi/30 minutes. *Circulate cement to surface*

**BOP and Tests:**

Surface to TD -

11" 2000 psi (minimum) double gate or annular BOP stack (Reference Figure #1, Figure #2).

Prior to drilling out surface casing, test ~~rams~~ <sup>BOP</sup> to 750# / 30 min.

From surface to TD - choke manifold (Reference Figure #3).

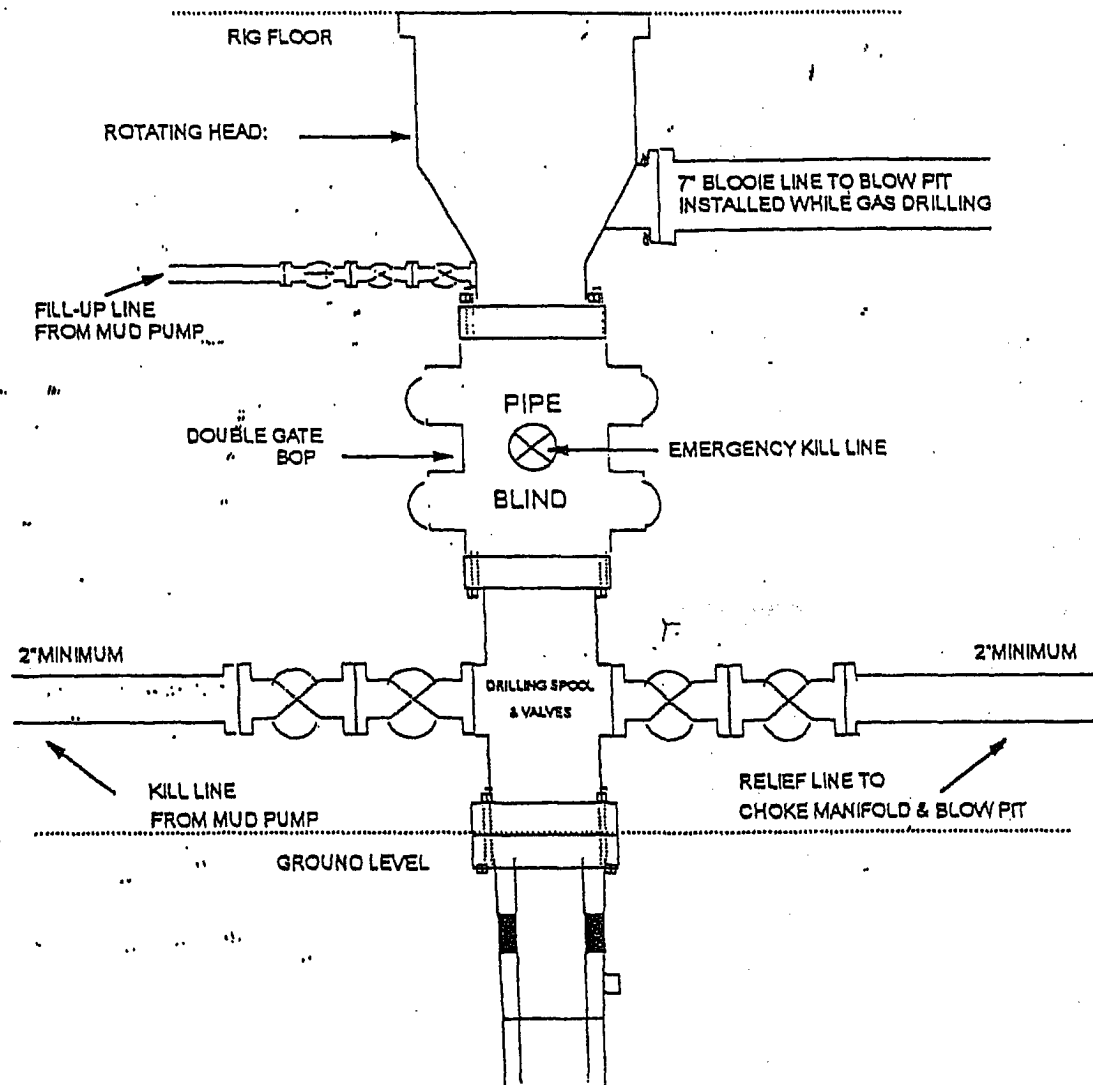
Pipe rams will be actuated at least once each day and blind rams actuated once each trip to test proper functioning. An upper kelly cock valve with handle and drill string safety valves to fit each drill string will be maintained and available on the rig floor.

**Additional information:**

- The Fruitland Coal formation will be completed.
- Anticipated pore pressure for the Fruitland is 250 psi.
- New casing will be utilized.
- Pipe movement (either rotation or reciprocation) will be done if hole conditions permit.

Date: August 18, 2009 Drilling Engineer: Michael T. Hannon

## BOP Configuration 2M psi System



13 5/8" and 11" Bore, 2000psi minimum working pressure double gate BOP to be equipped with blind and pipe rams: A Schaffer Type 50 or equivalent rotating head to be installed on the top of the BOP. All equipment is 2000psi working pressure/ or greater.

**FIGURE #1**

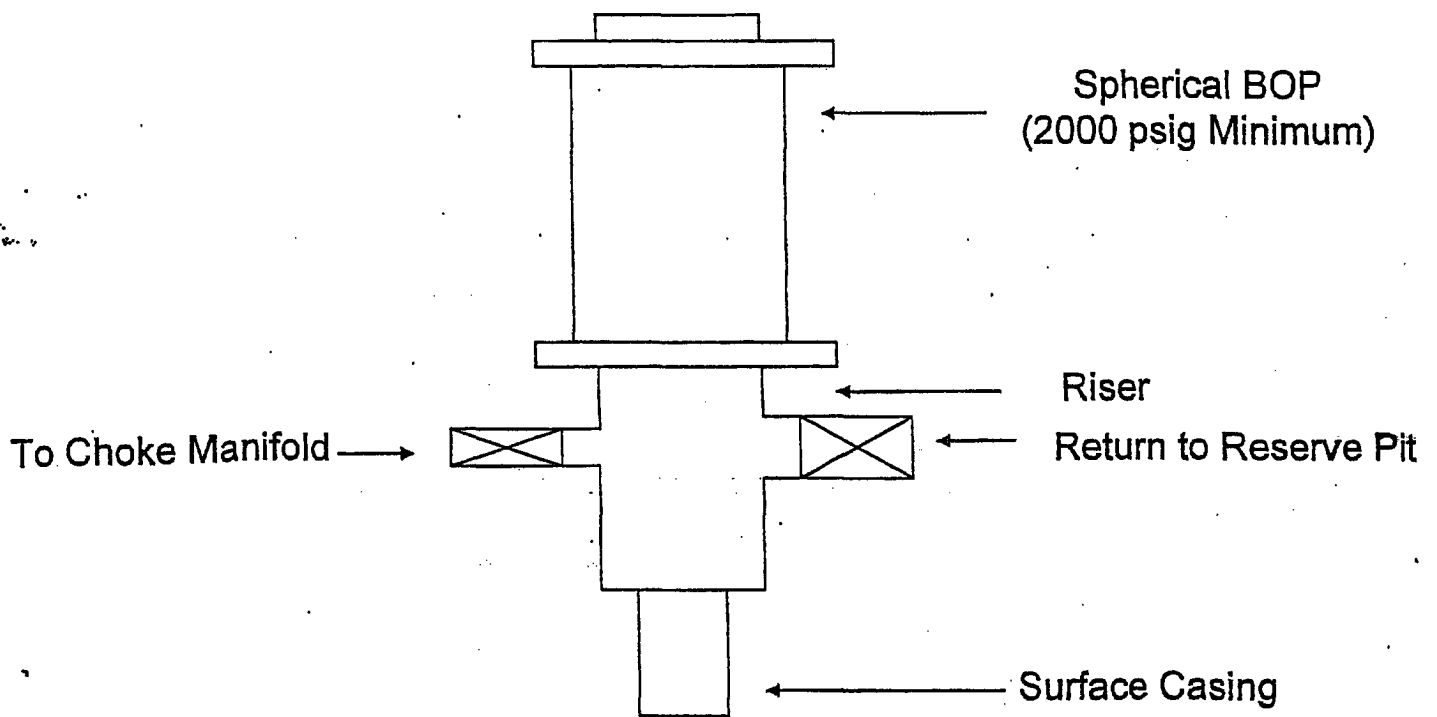
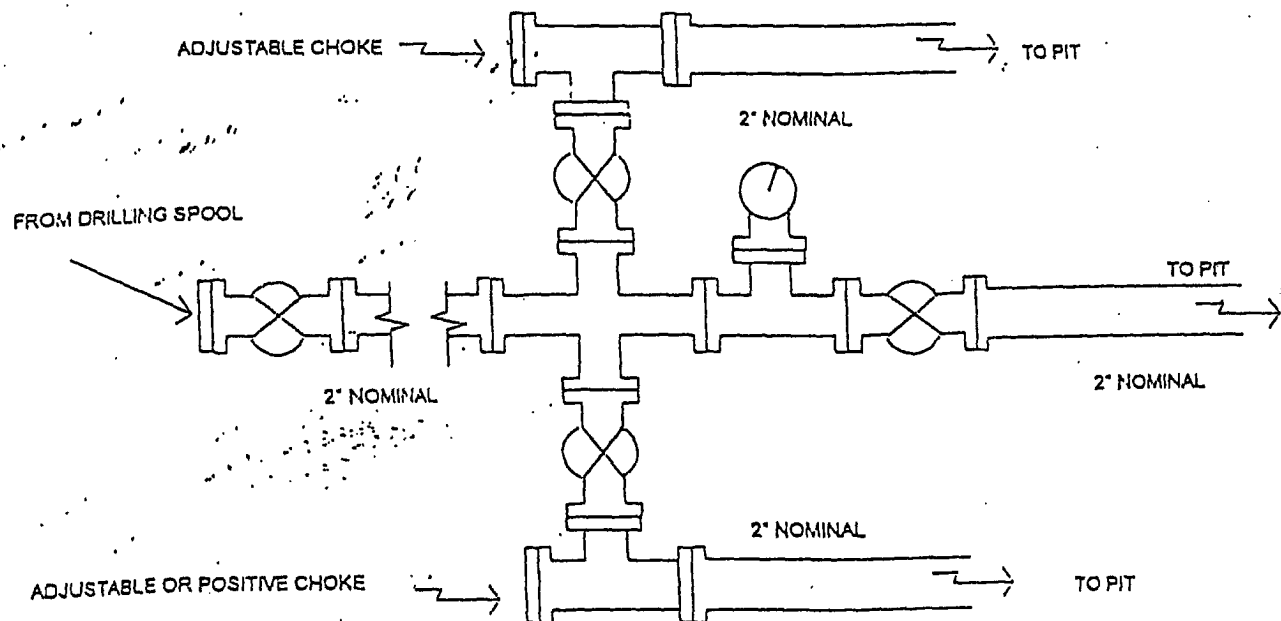


FIGURE #2

## Choke Manifold Configuration 2M System



Minimum choke manifold installation from surface to Total Depth.  
2" minimum, 2000psi working pressure equipment with two chokes.

Figure #3